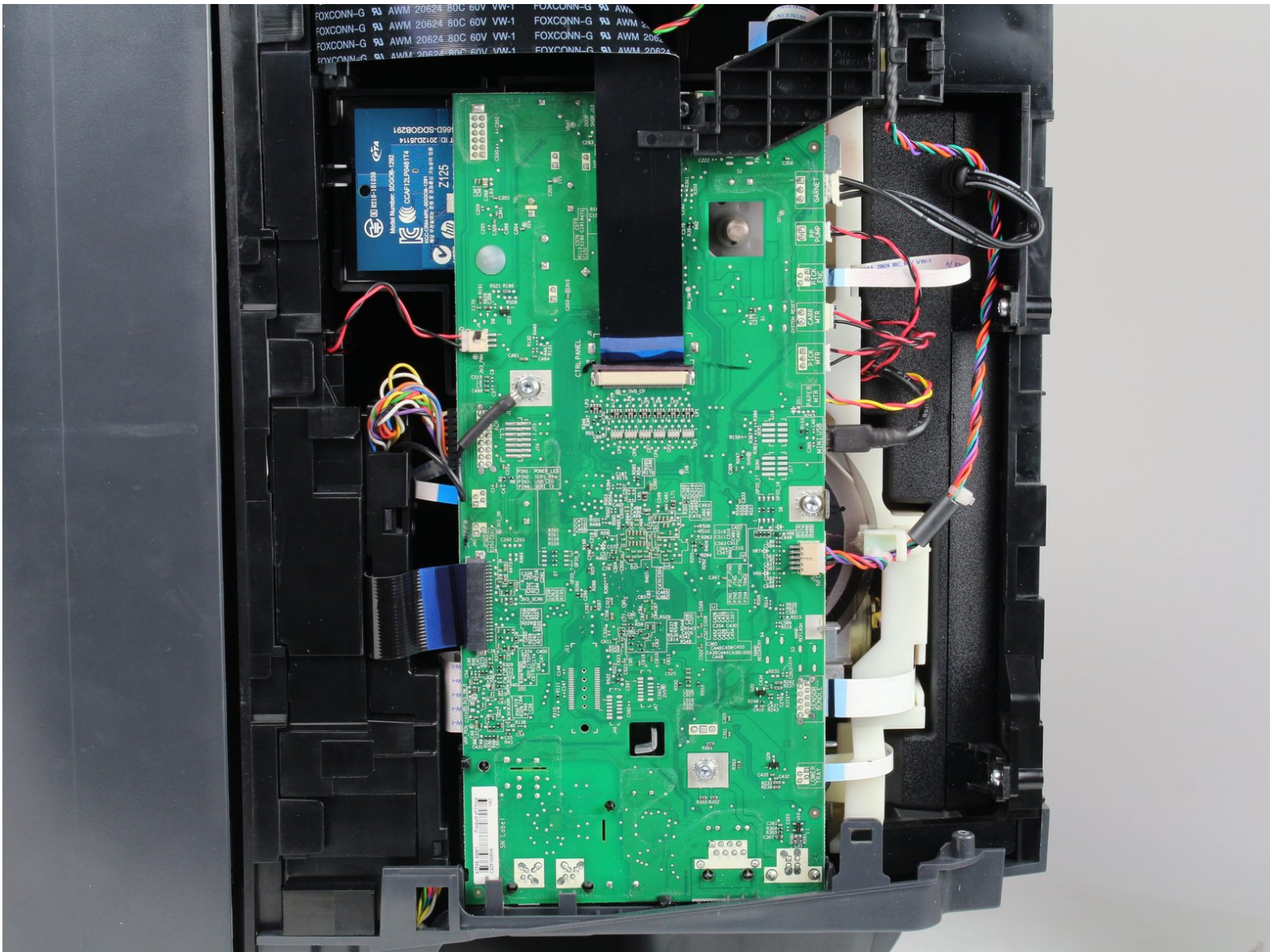




# HP Officejet Pro 8620 Left Panel Replacement

This guide will assist you in removing the left panel of the HP Officejet Pro 8620.

Written By: Jeremy Taylor



---

## INTRODUCTION

The left panel gives access to a variety of parts, Including the Motherboard, CMOS Battery, Power Brick and several others.

You will need a T9-Torx Screwdriver for this project.

It is recommended that you organize the screws using a magnetic white board or your preferred method.



### TOOLS:

- [T9 Torx Screwdriver](#) (1)
-

## Step 1 — Left Panel



- Turn off the printer and remove the power cable.
- Remove two 13mm T9 screws using a T9-Torx screwdriver. Turn counterclockwise until the screws are released.

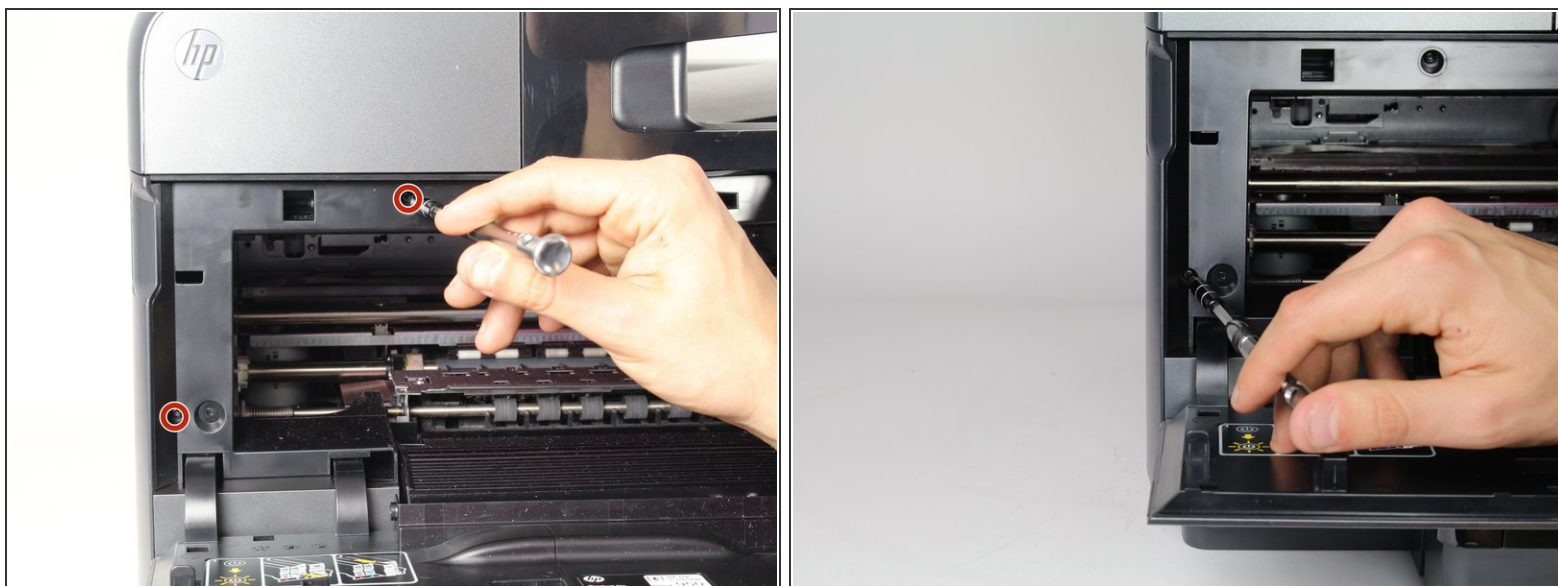
## Step 2



- Open the front door by placing your finger on the indented groove on the left side of the printer and pulling down
- ⓘ This will give you access to the two T9-TORX 13mm screws that need to be removed to release the panel.



### Step 3



- Remove the two 13mm screws with a T9-TORX screwdriver by turning counter-clockwise (left).

### Step 4



- Gently remove the left side panel by placing your palm flat against the surface and pulling down.

To reassemble your device, follow these instructions in reverse order.