



# HP Officejet Pro 8620 Motherboard Replacement

In this guide, we will remove the side panel to access the motherboard in the HP Officejet Pro 8620.

Written By: Jeremy Taylor



## INTRODUCTION

The motherboard is the brain of the printer, so if anything goes wrong with it, your entire printer becomes worthless. In order to access it, you will need to remove the side panel.

To remove the motherboard, you will need to remove several connectors, so a set of small hands will be helpful. You will also need a screwdriver to remove the four 8mm T9-Torx screws securing it in place.

Be sure to ground yourself and the device when removing the motherboard and its connectors so short circuits do not occur.

Be sure to set a space aside for the screws so you don't lose them.



### TOOLS:

- [T9 Torx Screwdriver](#) (1)
-

## Step 1 — Left Panel



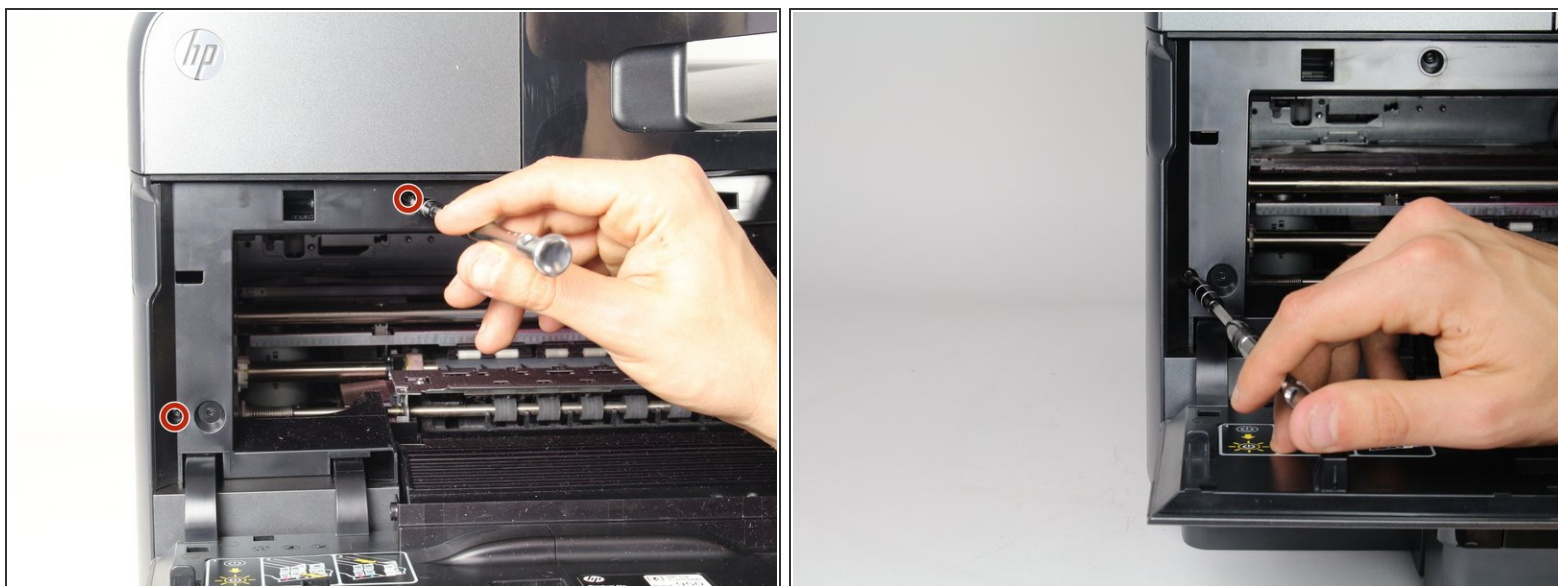
- Turn off the printer and remove the power cable.
- Remove two 13mm T9 screws using a T9-Torx screwdriver. Turn counterclockwise until the screws are released.

## Step 2



- Open the front door by placing your finger on the indented groove on the left side of the printer and pulling down
- ① This will give you access to the two T9-TORX 13mm screws that need to be removed to release the panel.

### Step 3



- Remove the two 13mm screws with a T9-TORX screwdriver by turning counter-clockwise (left).

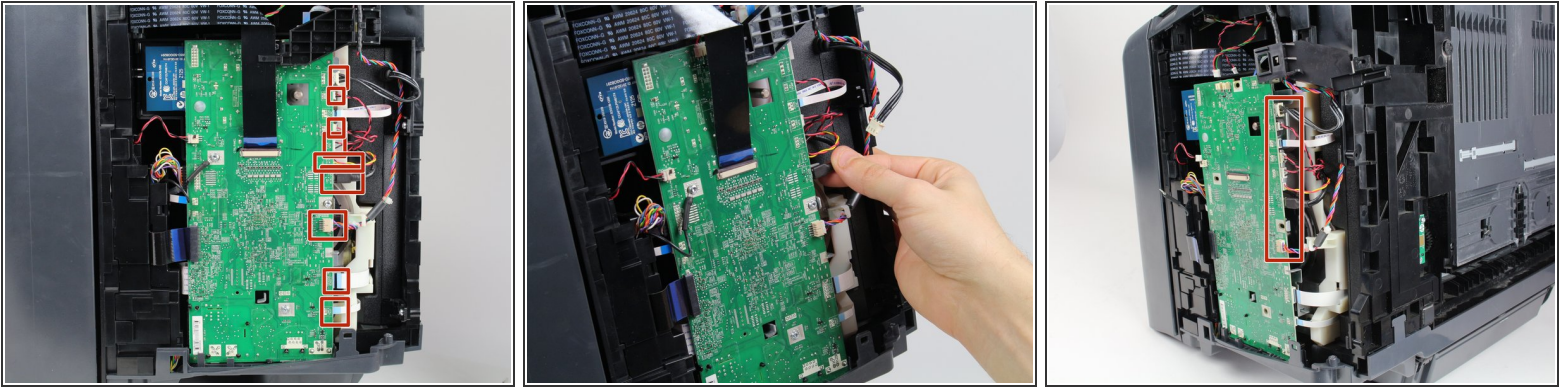
### Step 4




- Gently remove the left side panel by placing your palm flat against the surface and pulling down.



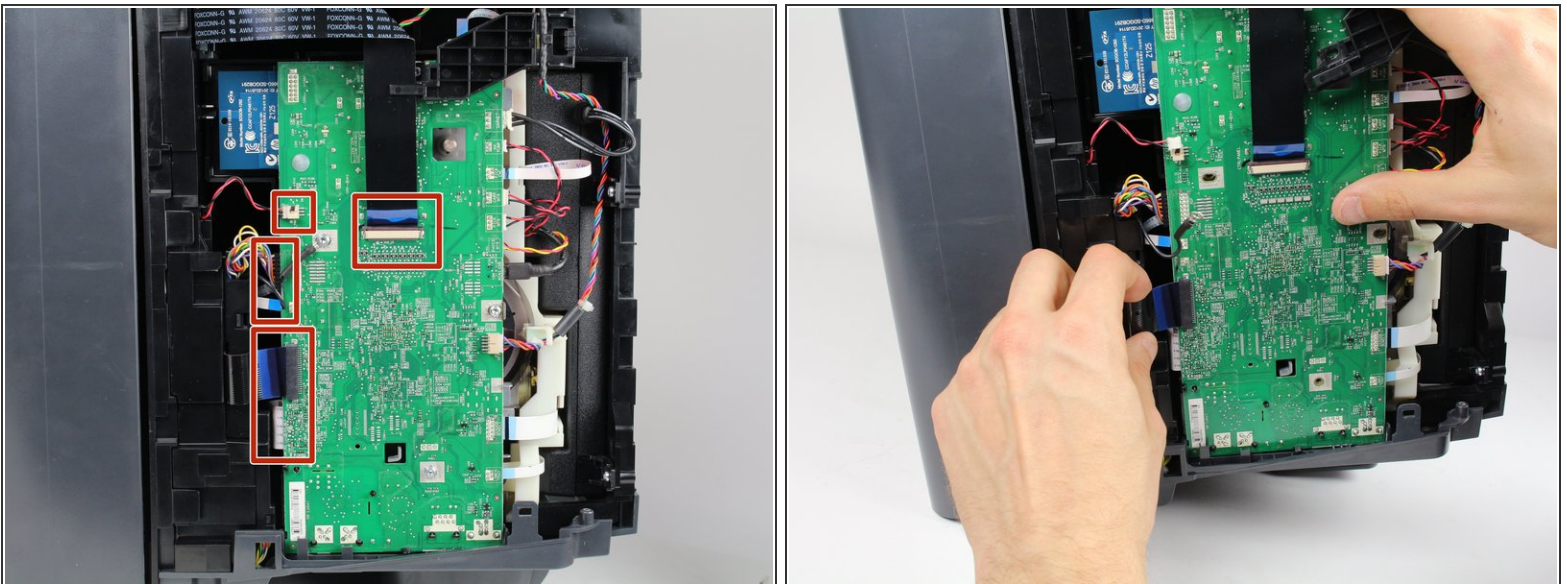
## Step 5 — Motherboard



 Disconnect power cable and ground the device and yourself to avoid electric shock to yourself and device.

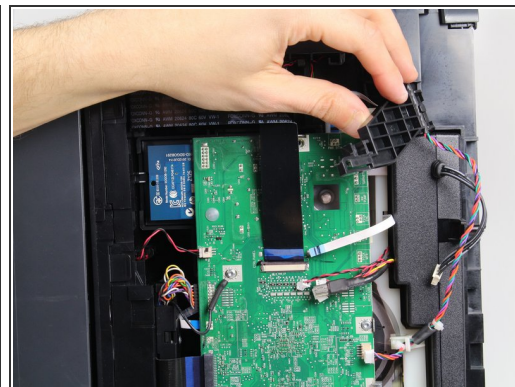
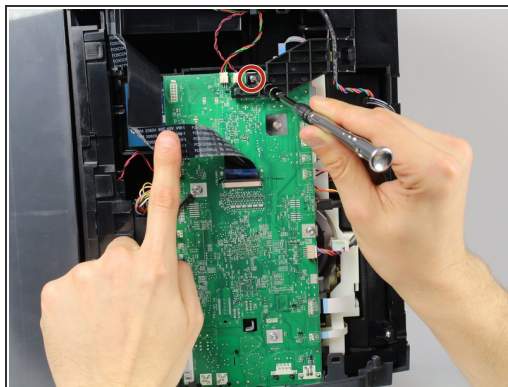
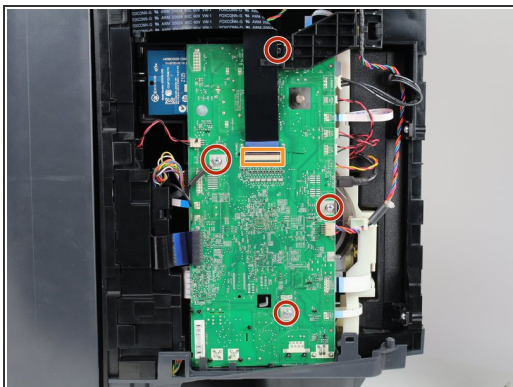
- Remove all connectors by gripping the plastic housing the wires and gently pulling outward until they disconnect.

## Step 6



- Gently disconnect connectors by gently pulling on the plastic housing until they release from the motherboard.
- Gently grasp the ribbon connectors so they do not bend by gripping top and bottom and lightly pulling until they release from the motherboard.

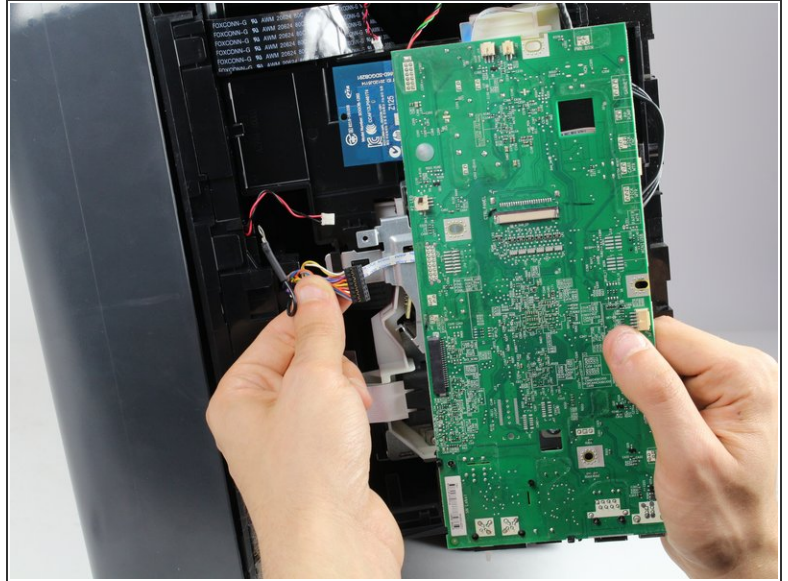
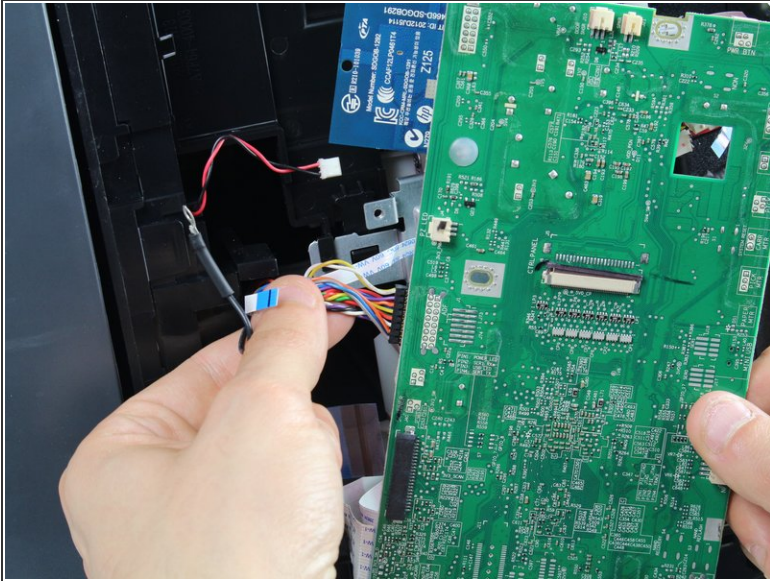
## Step 7



- Remove the four 8mm screws by using a T9-Torx screwdriver, turning counter-clockwise until released.
- Lift the ribbon connector in the center of the motherboard away after it has been disconnected to access the last screw.
- Move the plastic piece away from the motherboard before removing it.



## Step 8



- Release any remaining connectors from the motherboard by gently pulling away until they break free.
- Remove the motherboard.
- ☑ Mark each connector or remember their placement for reinstallation to avoid damage to components. If the connector does not snap in easily, don't force it.

To reassemble your device, follow these instructions in reverse order.