



HP Omen 15-ax243dx Keyboard Replacement

Keyboard not recognizing your inputs? Follow this guide on how to replace it.

Written By: Dean Lee



INTRODUCTION

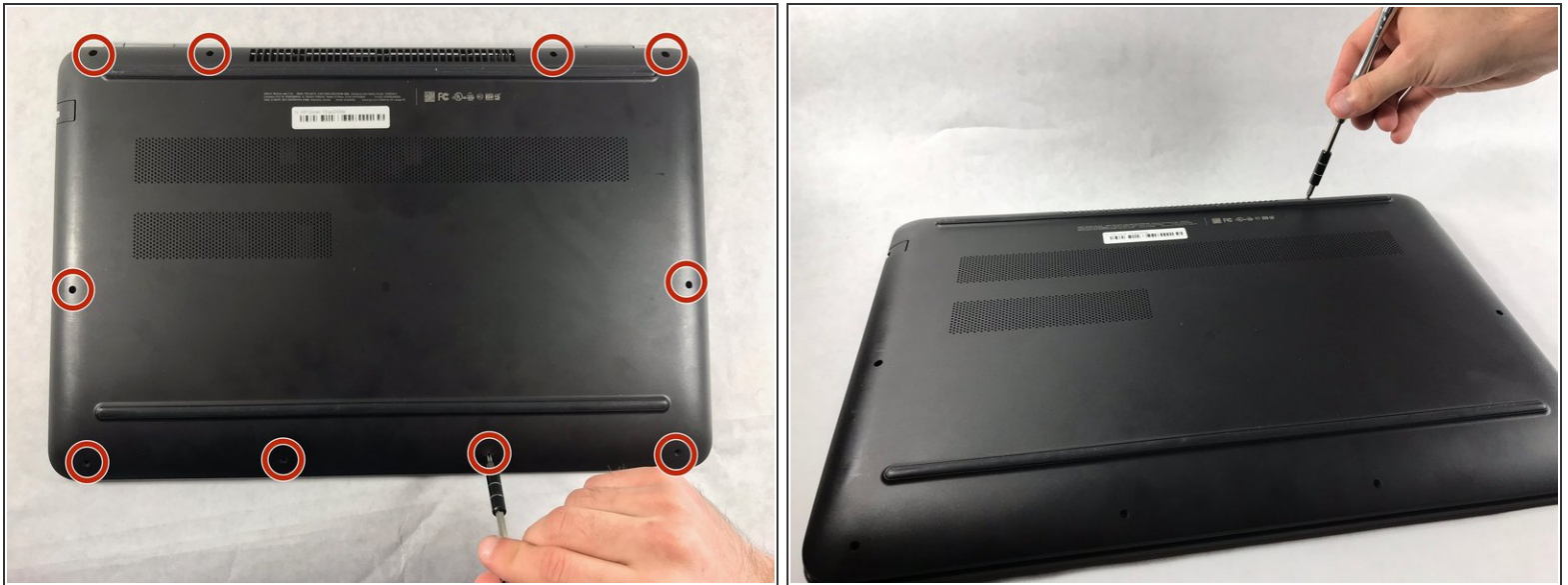
Did you spill coffee on your keyboard and now it is unresponsive? Well I think it is time to replace your keyboard and if you want replace it yourself you are in luck because this guide will show you how. This replacement will take you some time, approximately 40-60 minutes. With this guide totaling 31 steps which contains 5 pre-requested guides just to get to the keyboard, we have no choice but to rate this guide hard for its difficulty. You will basically have to do a complete tear down on the laptop. Like most of the HP-Omen replacement guides, you will only need two tools, the Philips #00 screwdriver and a plastic opening tool. The most important thing to remember is to organize the screws with each part. Good luck fixing!



TOOLS:

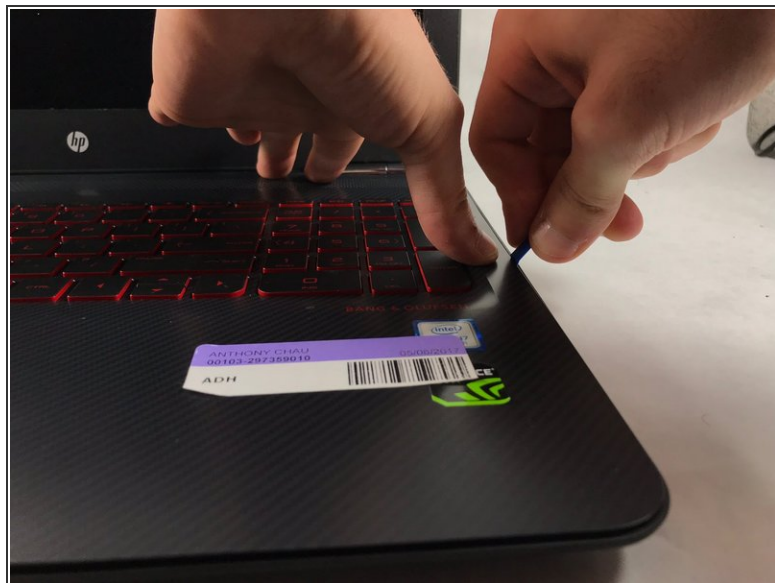
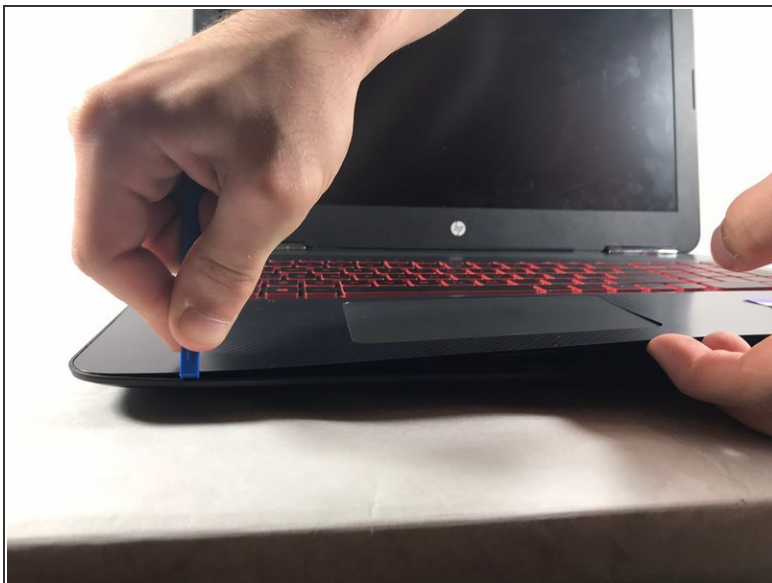
- [Phillips #0 Screwdriver](#) (1)
 - [iFixit Opening Tools](#) (1)
 - [Phillips #00 Screwdriver](#) (1)
-

Step 1 — Battery



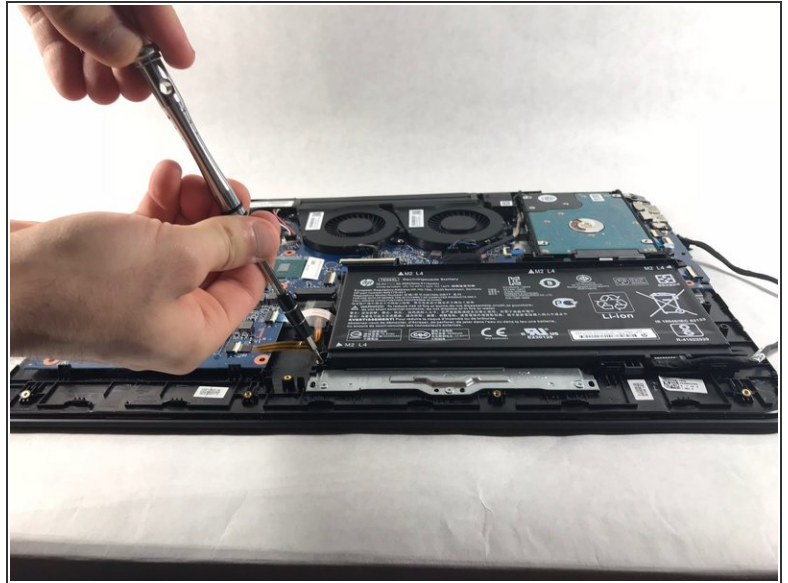
- The rear panel is secured by 10 screws. Using a #00 Phillips Screwdriver, remove the ten 1.2 mm screws.
- The screwdriver should be inserted at the same angle as the screws.
- ⓘ *Be sure to keep track of the screws and where they came from. Some only fit in to one spot.*

Step 2



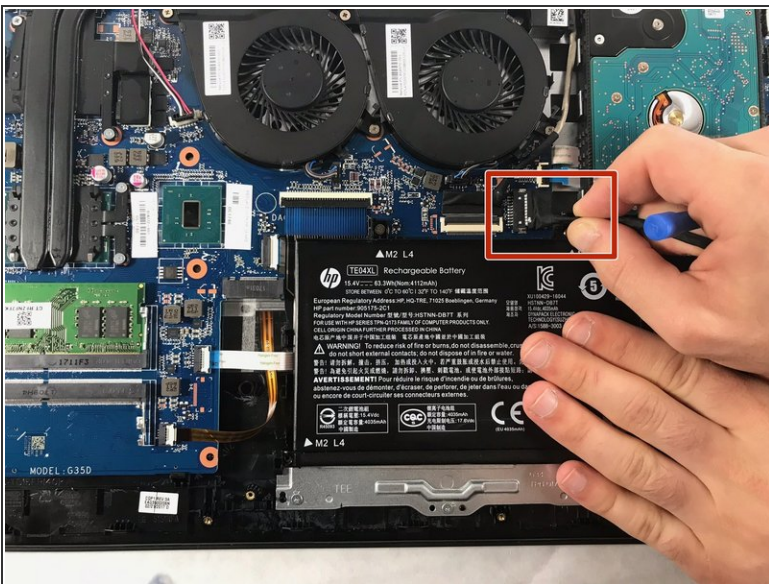
- Insert the plastic opening tool between the rear panel and the top casing. Gently push the opening tool upwards to remove the bottom case.
 - Follow your hand behind the tool and lift the case up gently.
- ⚠ If too much pressure and force is applied, you could crack one of the panels.

Step 3



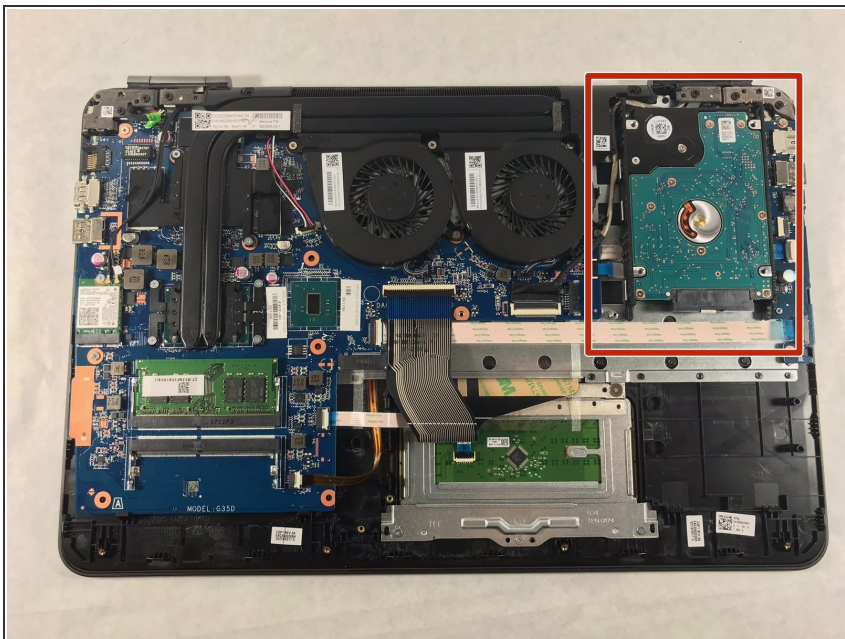
- Remove the four 1.2 mm Phillips #00 screws around the battery.

Step 4



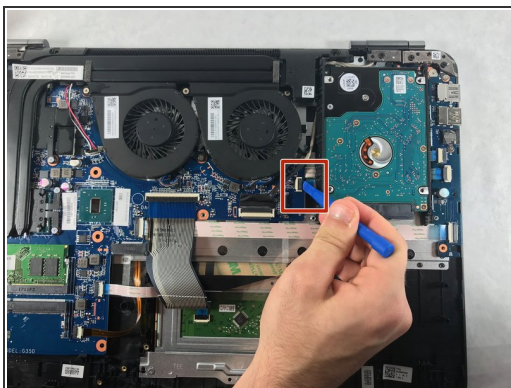
- Pull the cable out to disconnect the battery from the device. The battery will lift straight out of the device.
- Disconnect the cord from the battery and dispose of the battery if needed.

Step 5 — Hard-Drive



- After the battery is removed, the hard drive will be easier to access in the top right hand corner.

Step 6

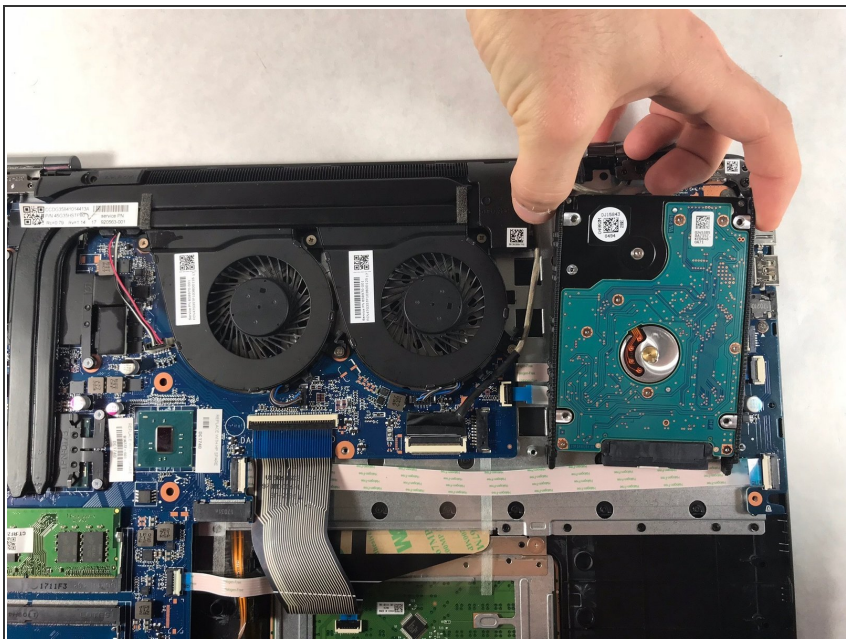


- With a opening tool, flip open the switch that locks in the hard drive ribbon cable into the device.



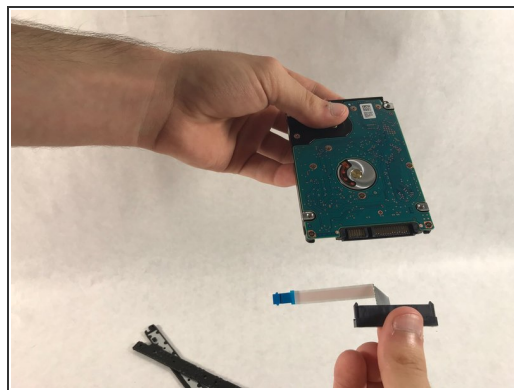
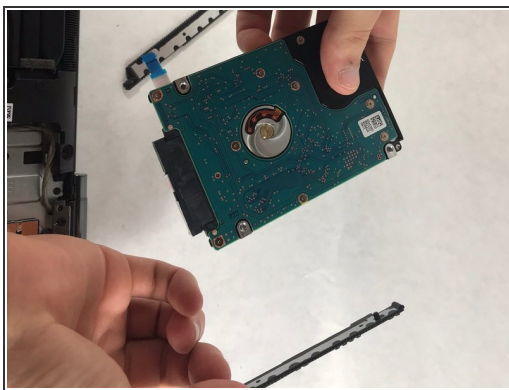
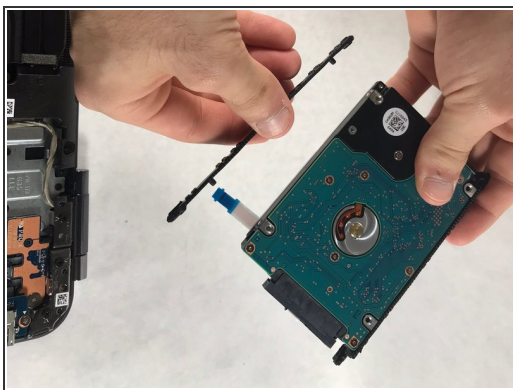
When lifting the cable out, lift straight up and out to prevent damage to the connector or cable.

Step 7



- Lift the hard drive up to remove from the device

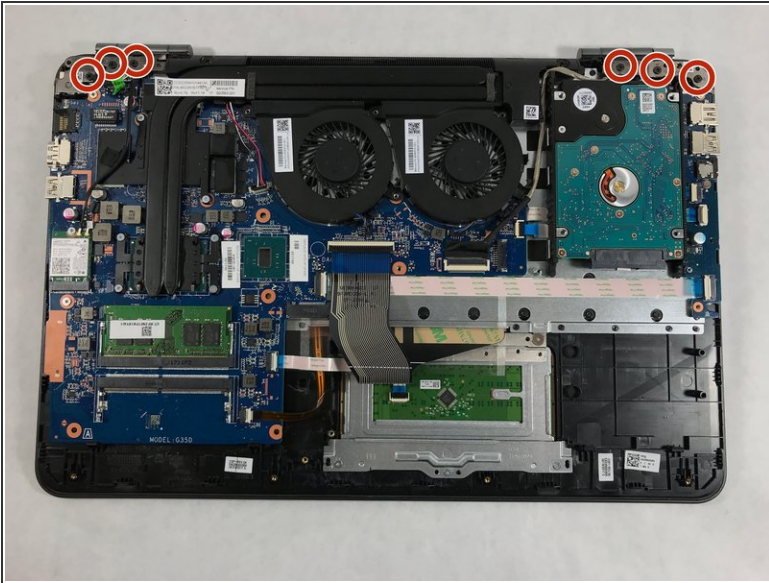
Step 8



- Remove the rubber guards on the side of the hard drive.
- Gently pull the plastic connector out from the hard drive.
- The hard drive can now be disposed of if needed.

i Save the guards and connectors from this hard drive, they will be used on the replacement part.

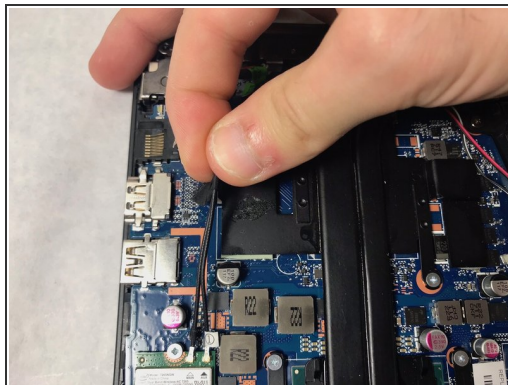
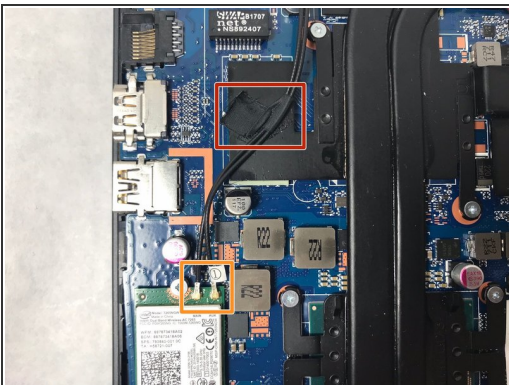
Step 9 — Screen



- Unscrew the six 1.2 mm screws connecting the screen to the body using the #00 Phillips screwdriver head.

***i** Be cautious of where the screws come out from, some will only fit in the same location.*

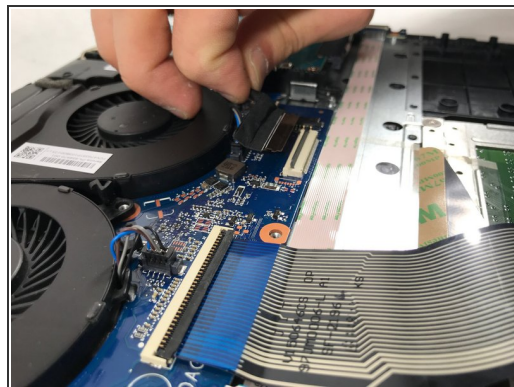
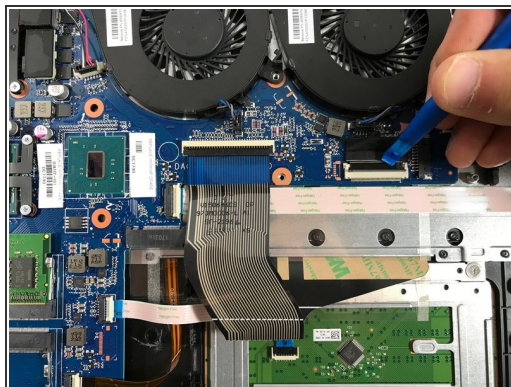
Step 10



- Remove the tape holding the wires down
- Disconnect the wires from the wifi chip

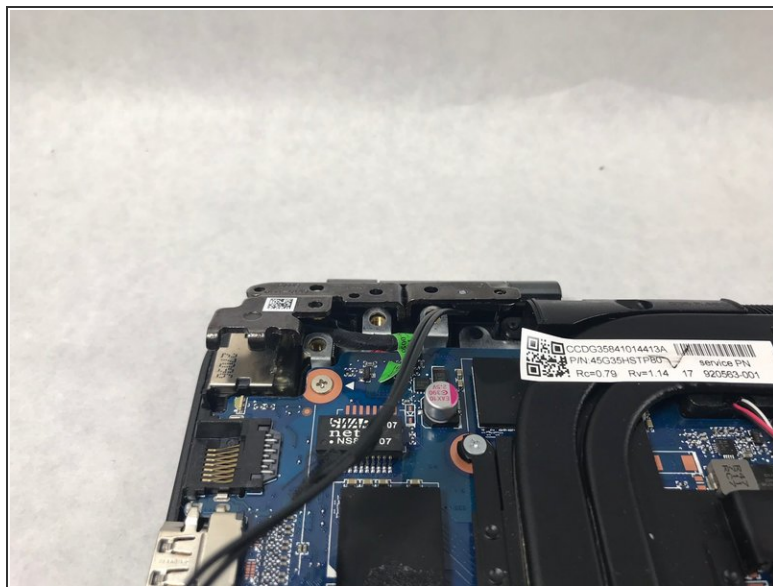
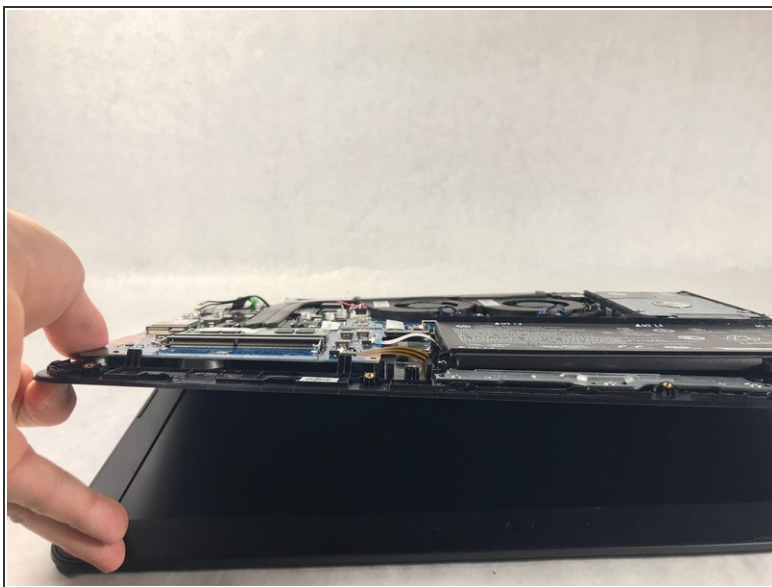
⚠ When removing the wires from the wifi chip, be careful to not damage the connectors.

Step 11



- Flip the switch up that holds the screen cable in place
- Lift up and pull back the cable from the insert

Step 12



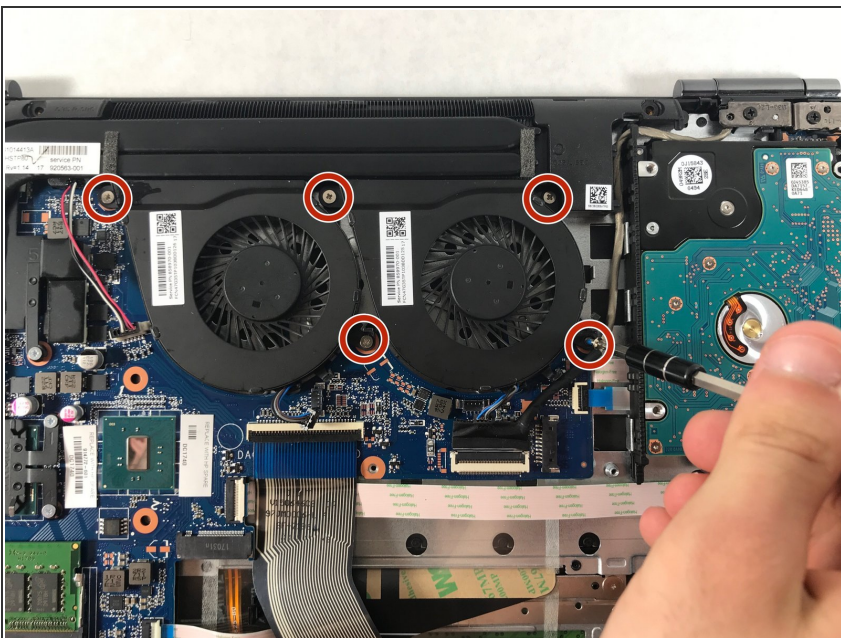
- Lift the base of the device up to separate the hinges from the body of the device

Step 13



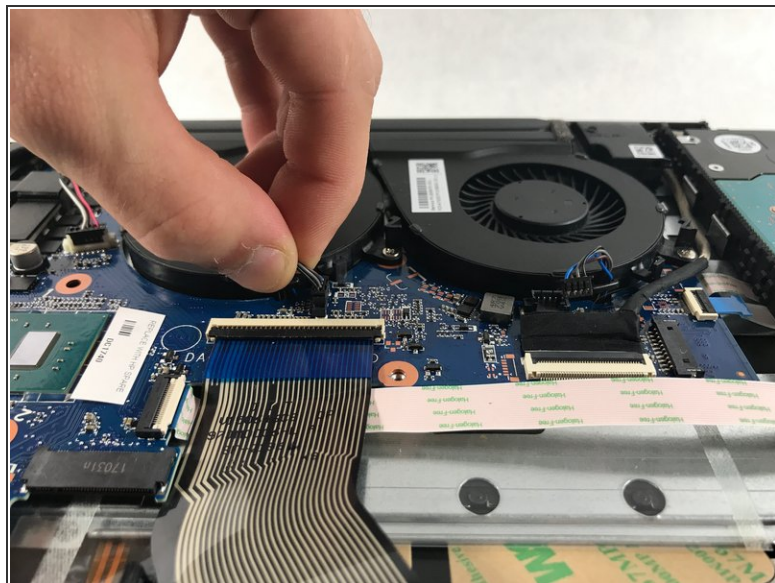
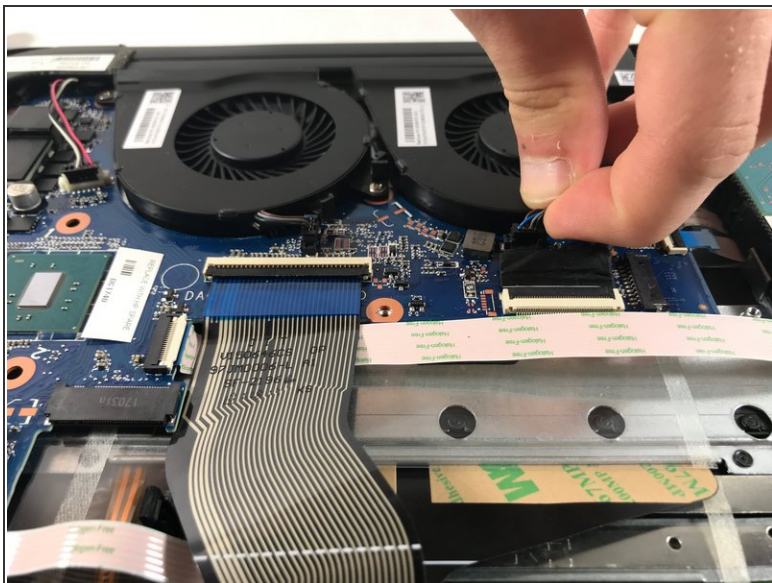
- Slide the base of the device out from under the hinges
- The screen can now be replaced

Step 14 — Ventilation Fans



- The two ventilation fans are secured with the system by 5 screws. Unscrew these five 1.2 mm screws using the Phillips #0 screwdriver.
- ⚠ **When removing the screws, use a magnetic screwdriver to prevent the screws from falling behind the motherboard**

Step 15



- After removing all 5 screws, the fans are still connected with the system through 2 cables.
- Carefully pull the fan cables out of the connectors on the motherboard.

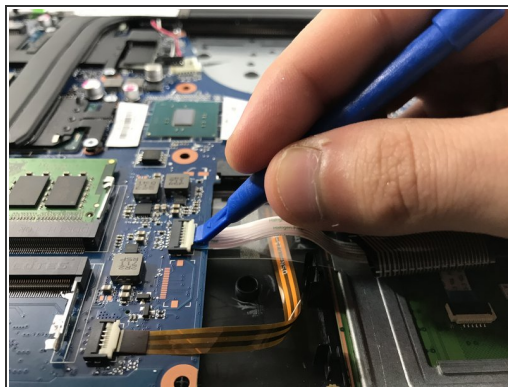
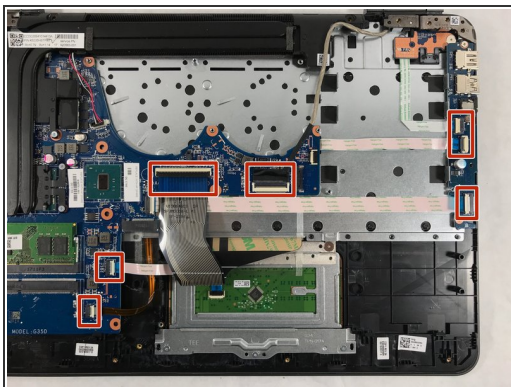
⚠ Be cautious when pulling by the wires, this can permanently damage the fans beyond repair.

Step 16



- The fans can now be removed from the device.

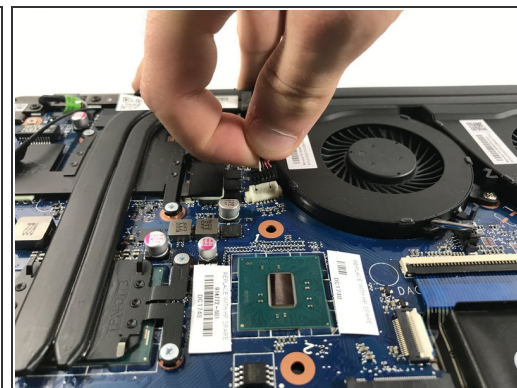
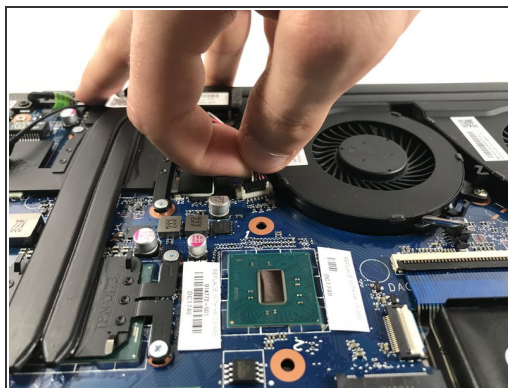
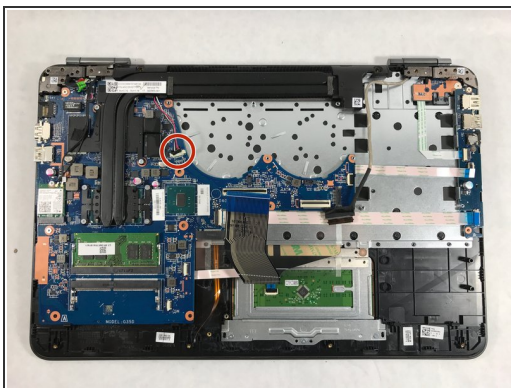
Step 17 — Speaker



- Disconnect all the ribbon cables highlighted.

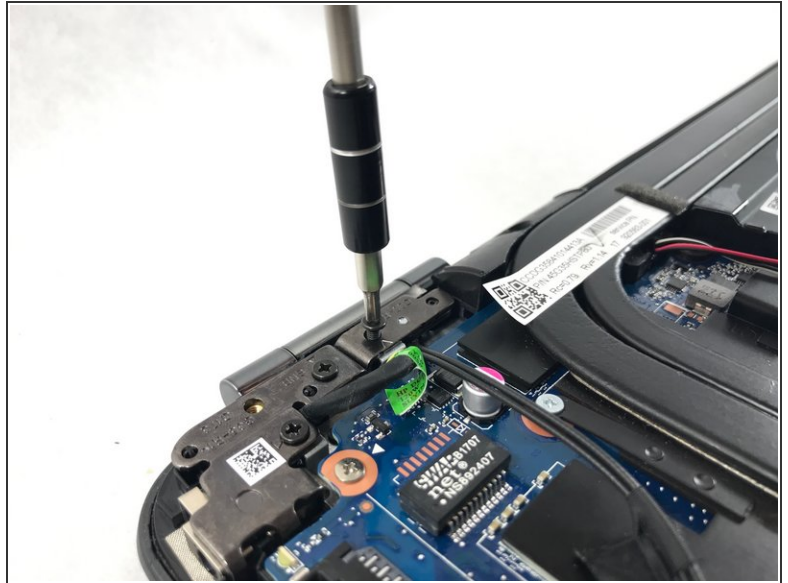
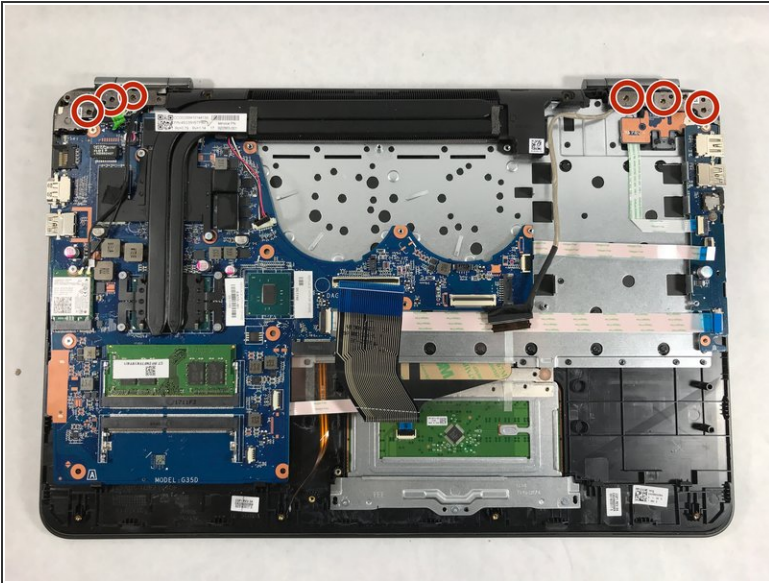
***i** Be sure to use the plastic opening tool when flipping the switches up on the cable connectors.*

Step 18



- Unplug the wire the connects to the speakers.

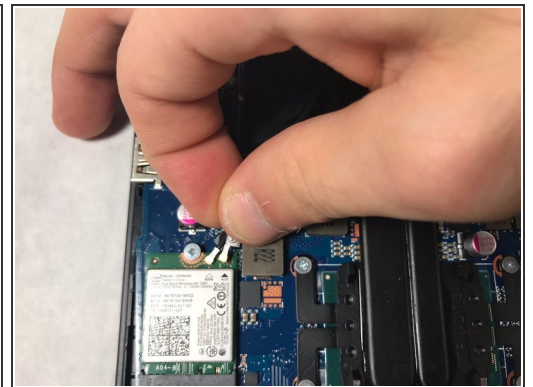
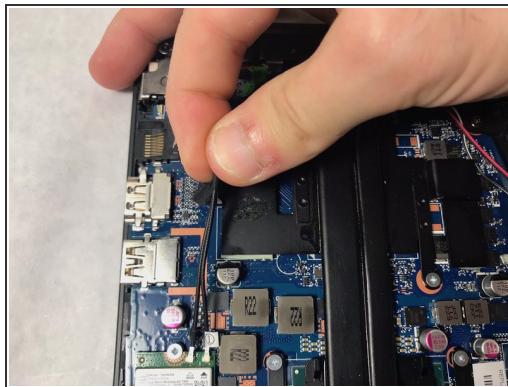
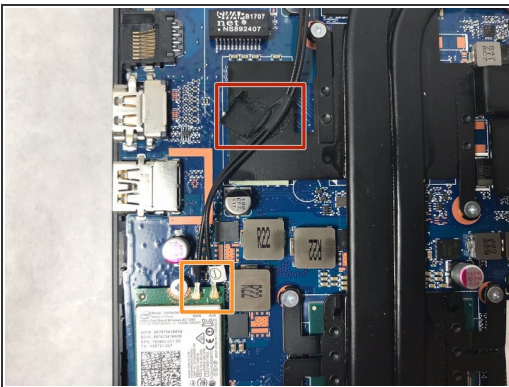
Step 19



- Unscrew the six 1.2 mm screws connecting the screen to the body using the #0 Phillips screwdriver.

***i** Be cautious of where the screws come out from, some will only fit in the same location.*

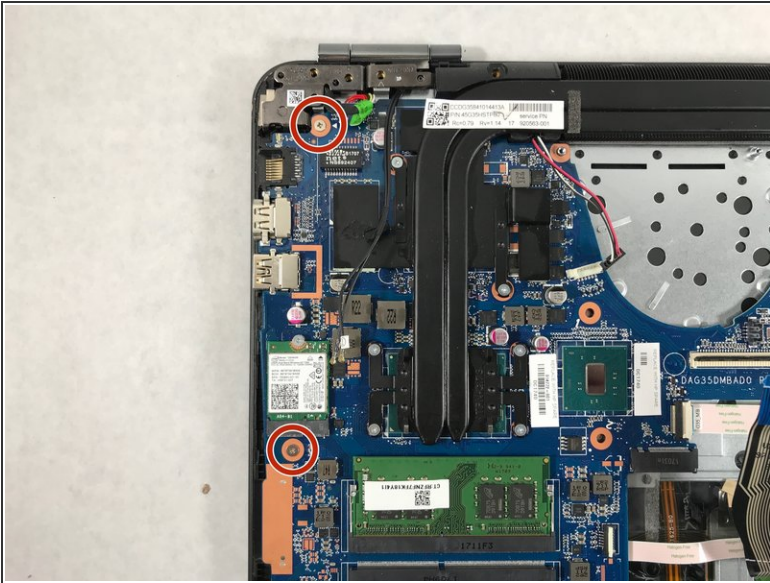
Step 20



- Remove the tape holding the wires down
- Disconnect the wires from the wifi chip

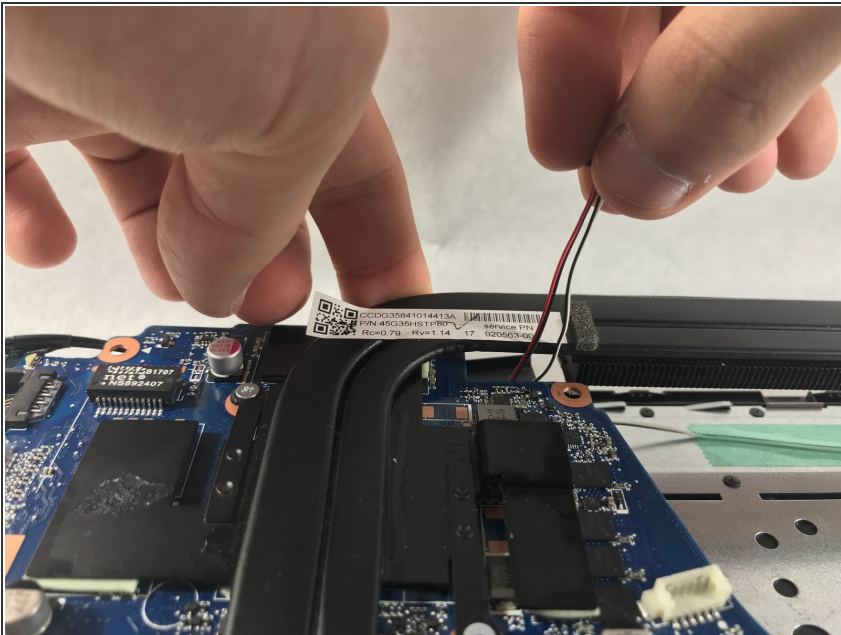
⚠ When removing the wires from the wifi chip, be careful to not damage the connectors.

Step 21



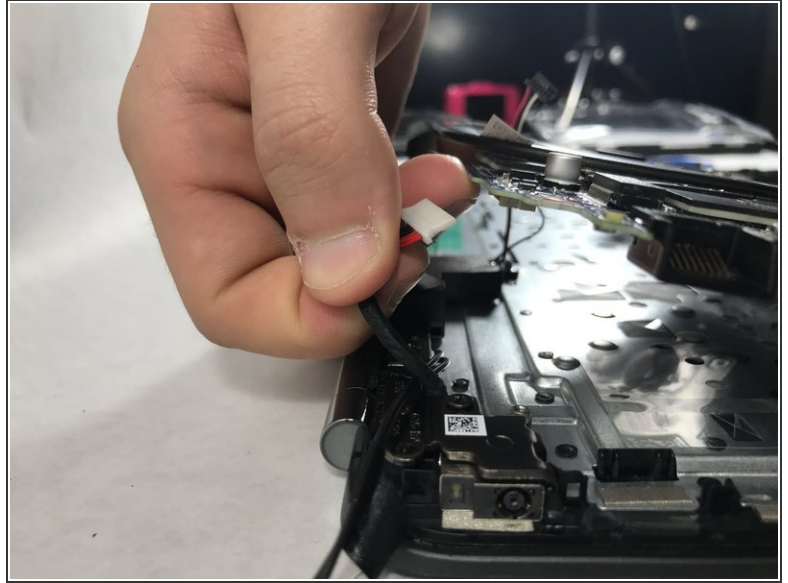
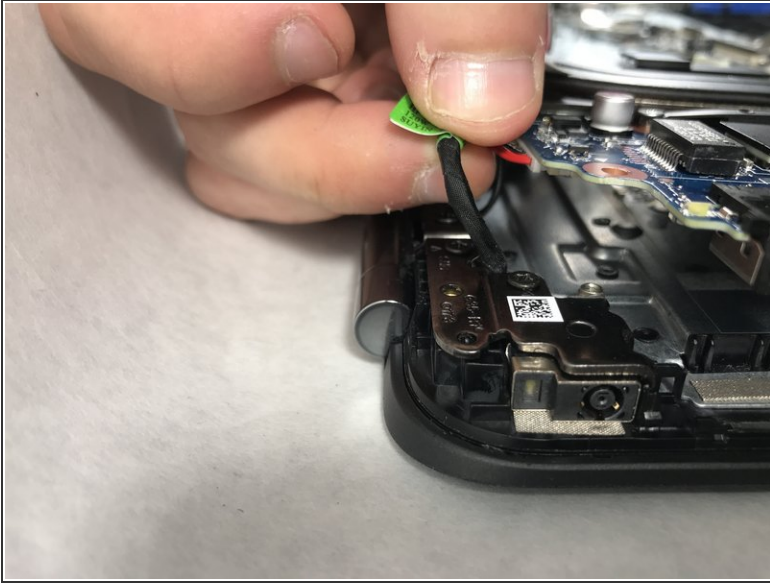
- Unscrew the two 1.2 mm screws holding the motherboard to the front panel using the same screwdriver.

Step 22



- Lift the back of the motherboard up then slide the audio cable out between the heatsink and motherboard

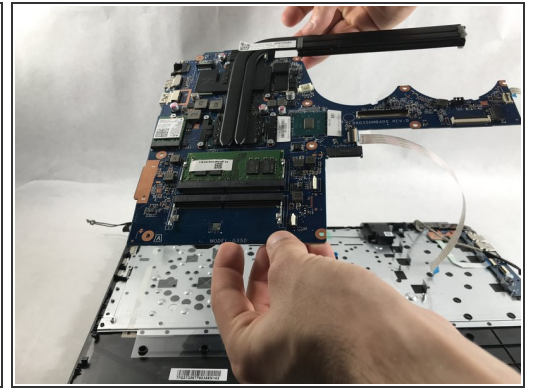
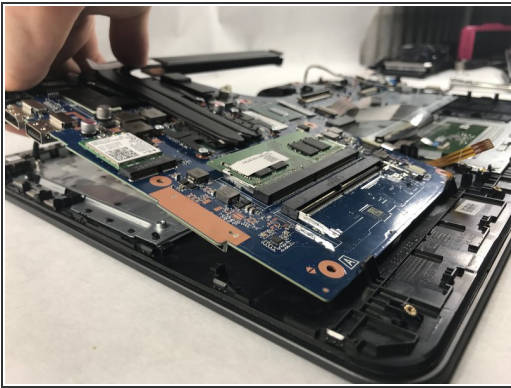
Step 23



- Lift the back of the motherboard up again and remove the charging adapter.

⚠ This wire is located in a tight spot. Pull it straight out and do not bend it, this will cause irreparable damage to the device.

Step 24

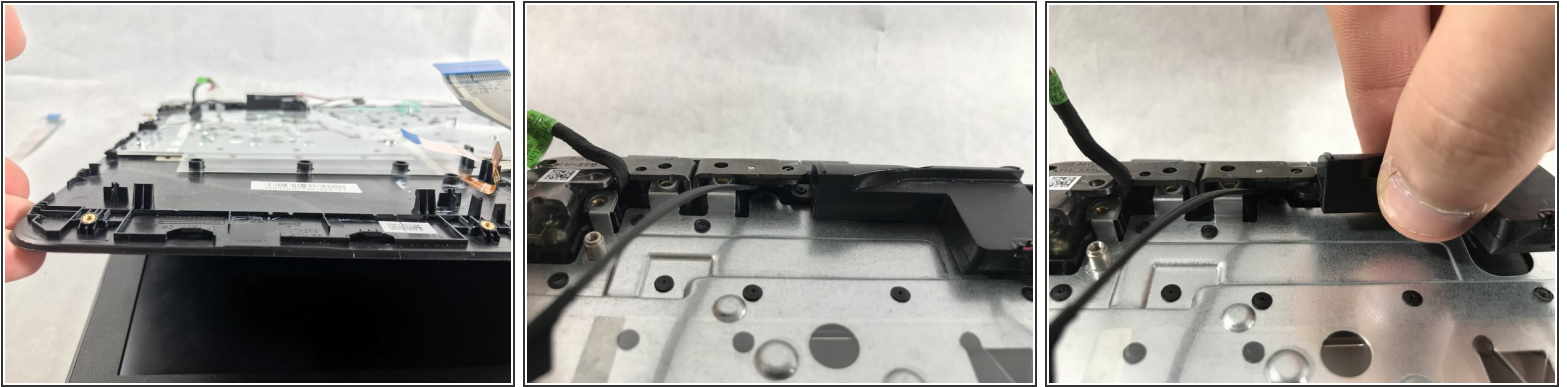


- Slowly lift up the back of the motherboard.

⚠ The board is friction fit at the rotation point. Be careful to lift the board around this point.

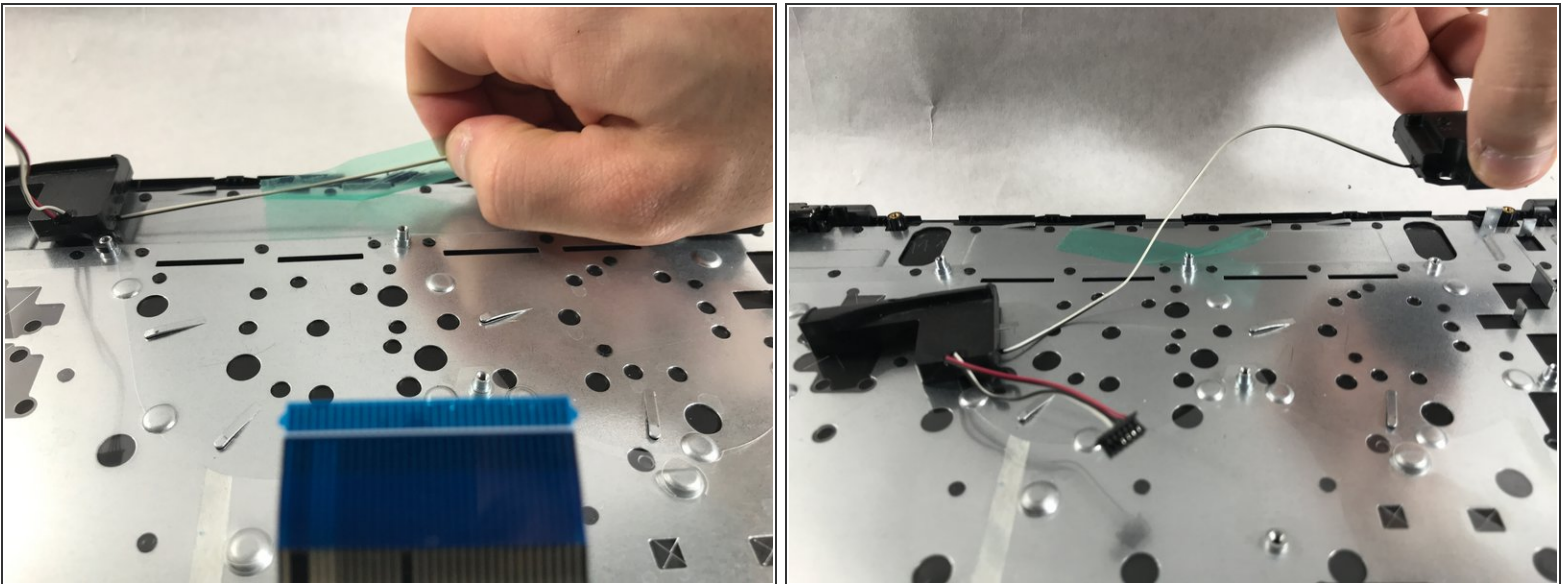
- The board will now lift out of the device.

Step 25



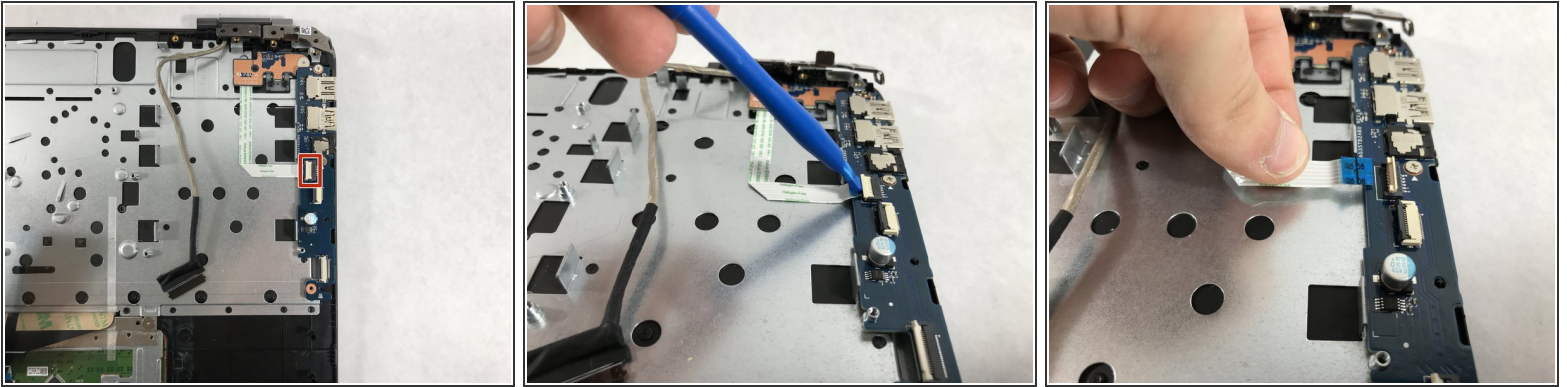
- Lift up the keyboard panel of the device and set it back down.
- The speaker in the top left hand corner can be taken out of its place.

Step 26



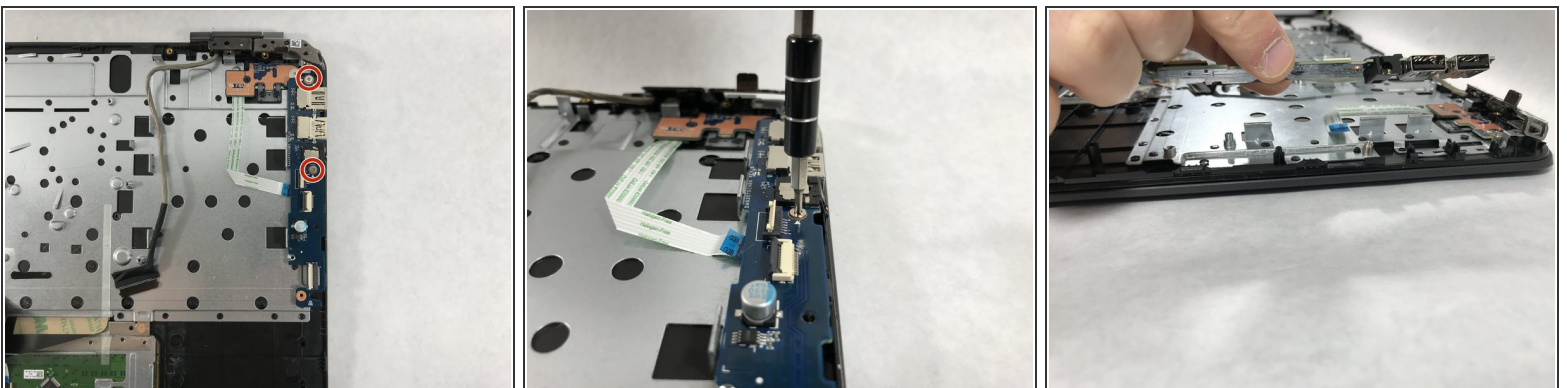
- Remove the tape between the two speakers
- The left speaker can now be removed.
- The speakers can be disposed of if needed now.

Step 27 — Keyboard



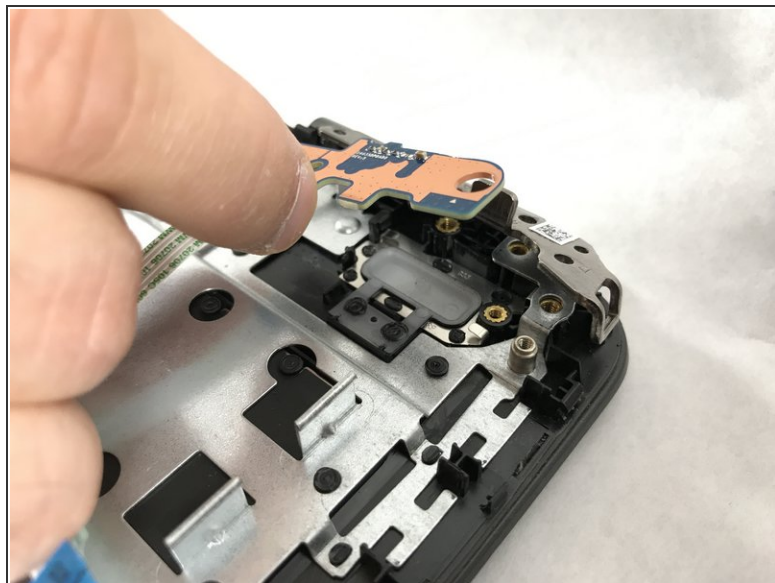
- Use the opening tool to flip the switch that holds the cable to the power button.
- Lift the cable out of the connector

Step 28



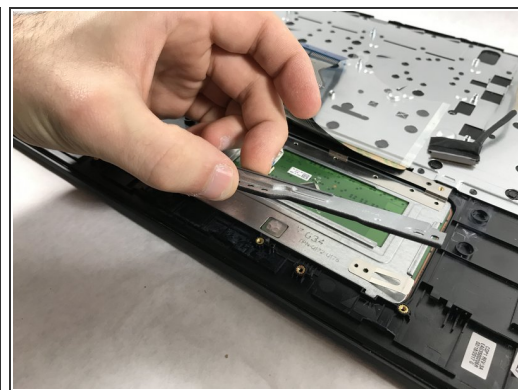
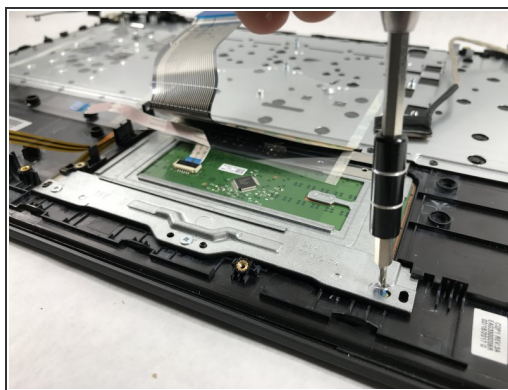
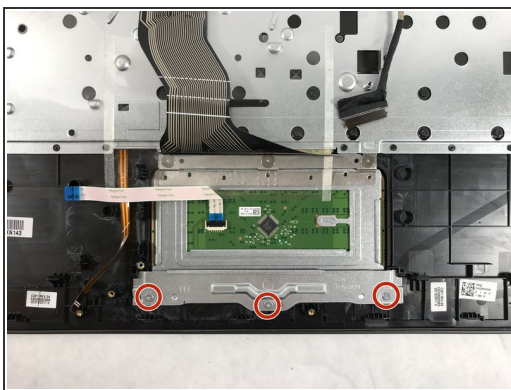
- Unscrew the two 1.2 mm #00 Phillips head screws that hold the board in.
- This can now be lifted straight out of the device.

Step 29



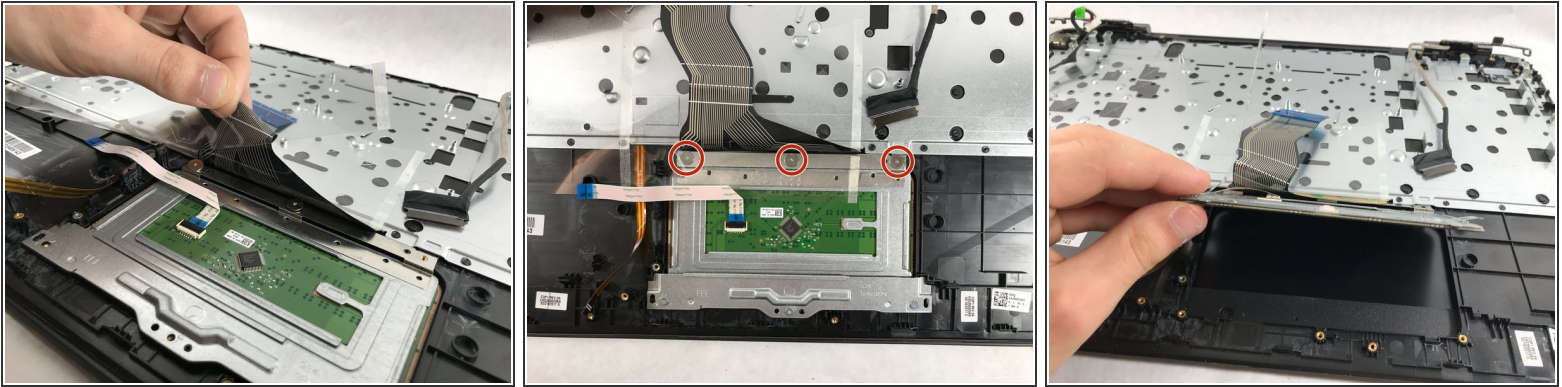
- Unscrew the 1.2 mm #00 Phillips head screw that holds the power button into place.
- This can be lifted out of the device

Step 30



- Unscrew the three 1.2 mm #00 Phillips head screws that hold in the plate below the trackpad.
- This can be lifted out of the device.

Step 31



- Lift up the clear plastic that covers the top three screws
- Use a size #00 Phillips head screw driver to remove the three 1.2 mm screws
- The trackpad can now be removed from the device.

Step 32



- The keyboard can now be slid from underneath the hinges.
- The keyboard can be disposed of if needed.

To reassemble your device, follow these instructions in reverse order.

This document was generated on 2019-10-12 06:27:43 PM (MST).

