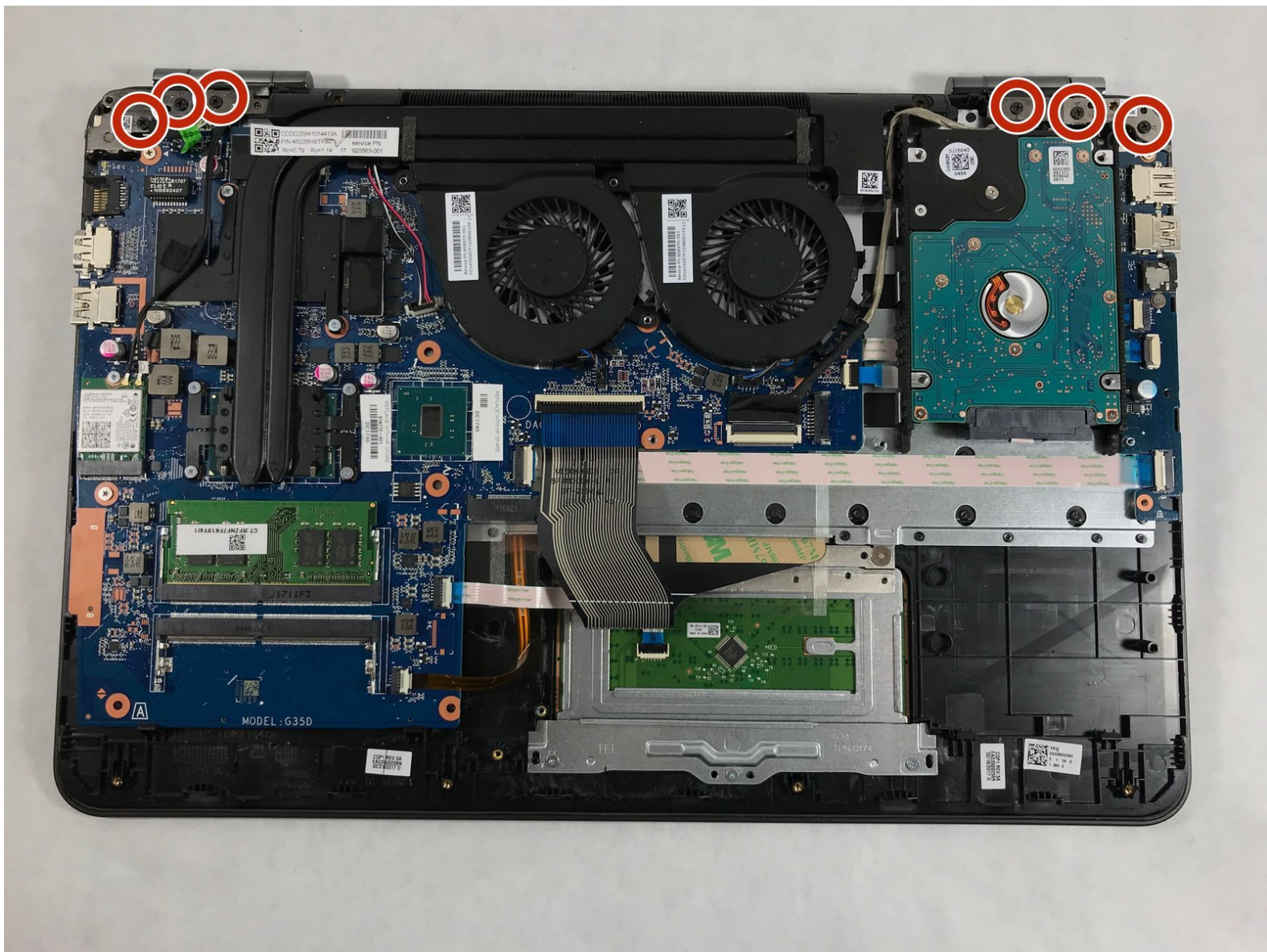




HP Omen 15-ax243dx Screen Replacement

Is your screen damaged and will not show images? Follow this guide on how to replace the screen on your device.

Written By: vangnam



INTRODUCTION

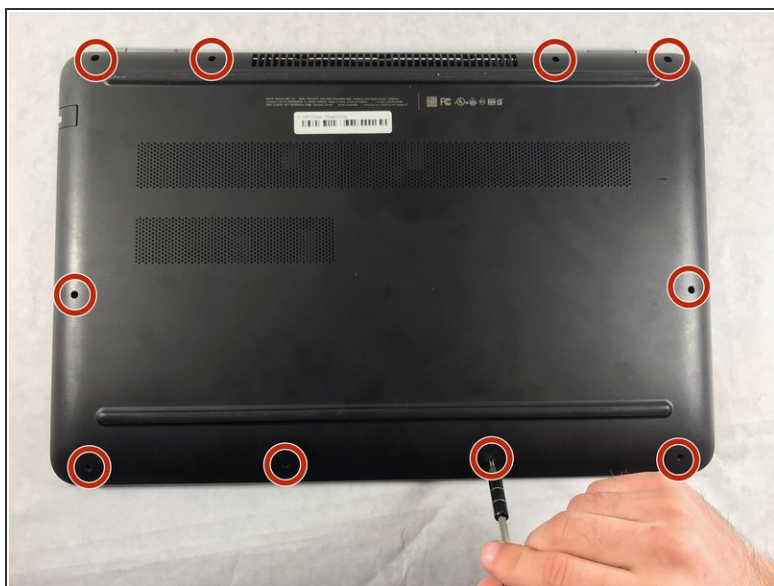
Is your screen cracked or smashed? Will it not turn on? Well you are in luck, if you follow our steps on how to disassembly the screen off the HP-Omen computer and reassembly the screen back on. This guides difficulty is moderate and contains 9 total steps that will take you approximately 20-40 minutes to complete it. This guide will also require the pre-requeste of removing the back cover and the battery. You will need only two tools for this repair guide, a Philips #00 screw-driver and a plastic opening tool.



TOOLS:

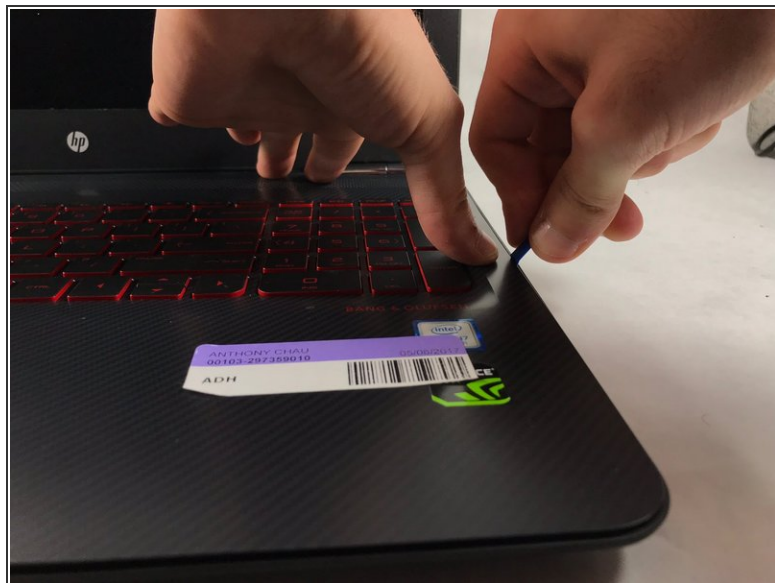
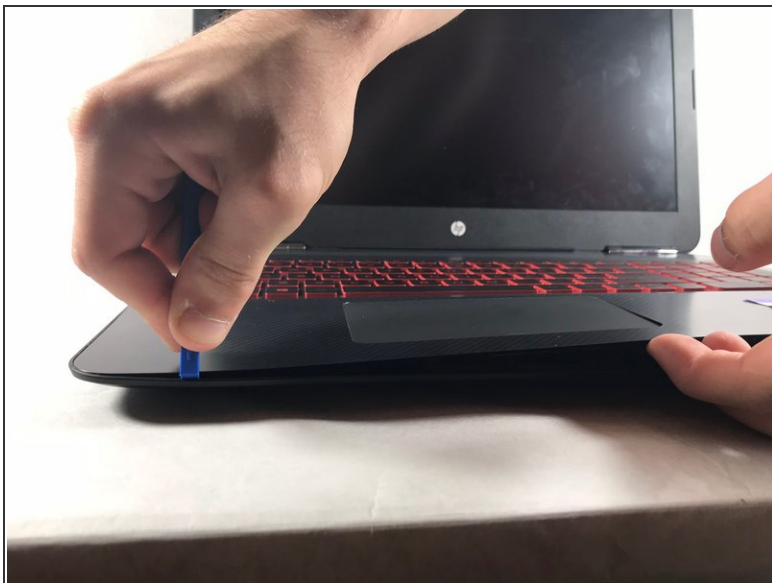
- [Phillips #00 Screwdriver](#) (1)
- [iFixit Opening Tools](#) (1)

Step 1 — Battery



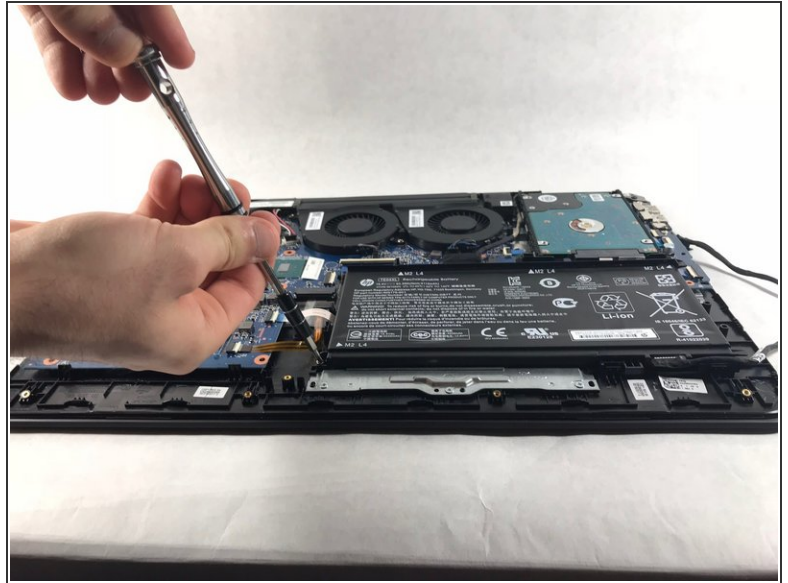
- The rear panel is secured by 10 screws. Using a #00 Phillips Screwdriver, remove the ten 1.2 mm screws.
- The screwdriver should be inserted at the same angle as the screws.
- ⓘ *Be sure to keep track of the screws and where they came from. Some only fit in to one spot.*

Step 2



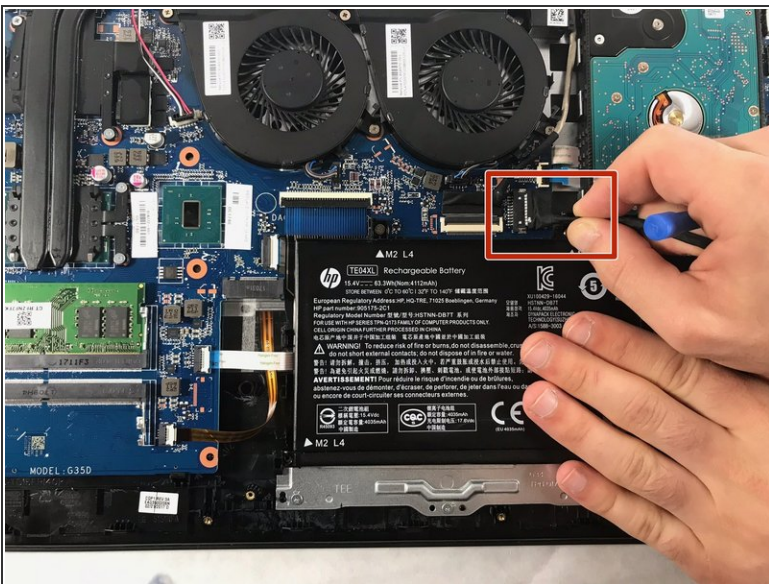
- Insert the plastic opening tool between the rear panel and the top casing. Gently push the opening tool upwards to remove the bottom case.
 - Follow your hand behind the tool and lift the case up gently.
- ⚠ If too much pressure and force is applied, you could crack one of the panels.

Step 3



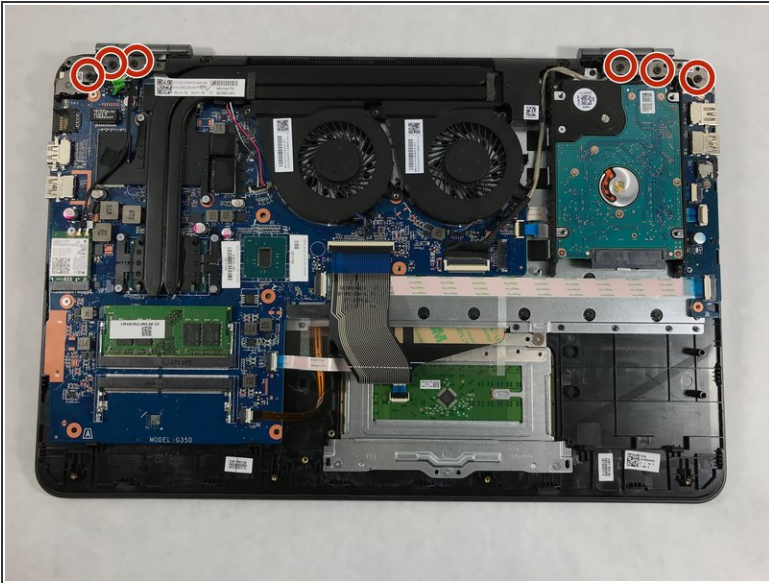
- Remove the four 1.2 mm Phillips #00 screws around the battery.

Step 4



- Pull the cable out to disconnect the battery from the device. The battery will lift straight out of the device.
- Disconnect the cord from the battery and dispose of the battery if needed.

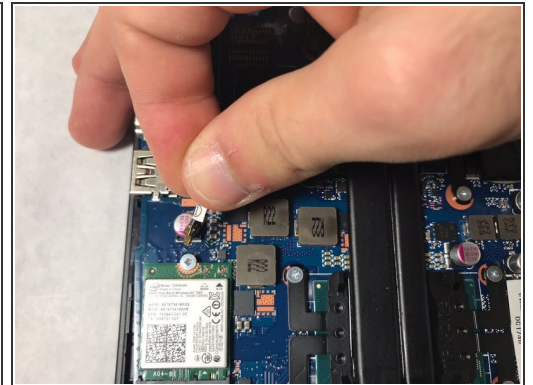
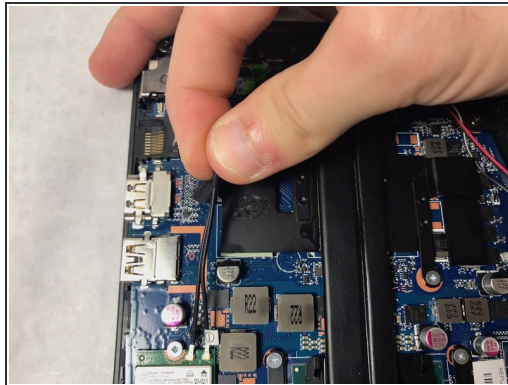
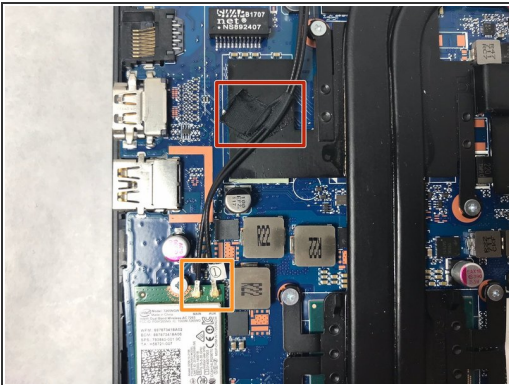
Step 5 — Screen



- Unscrew the six 1.2 mm screws connecting the screen to the body using the #00 Phillips screwdriver head.

***i** Be cautious of where the screws come out from, some will only fit in the same location.*

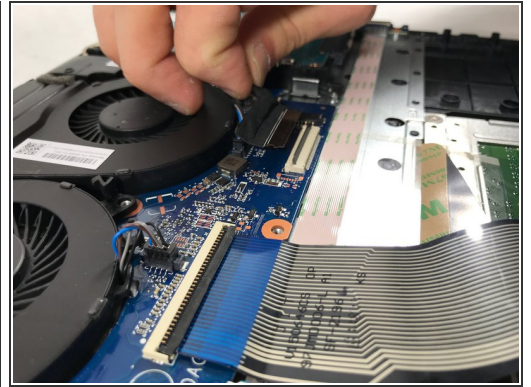
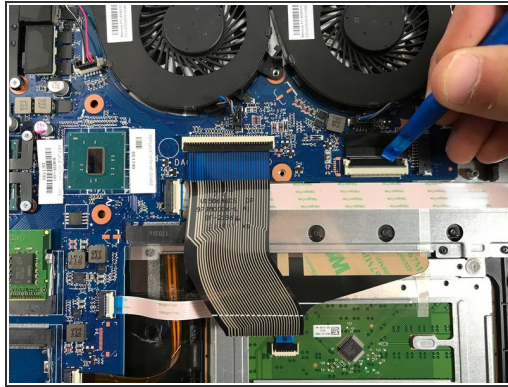
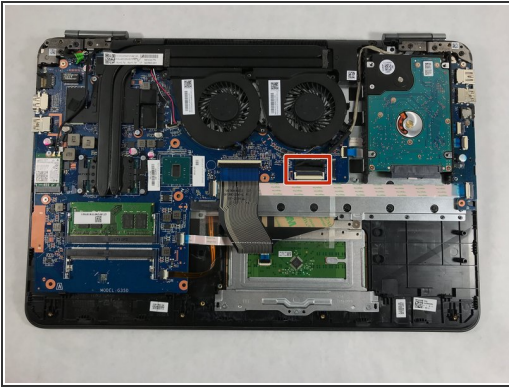
Step 6



- Remove the tape holding the wires down
- Disconnect the wires from the wifi chip

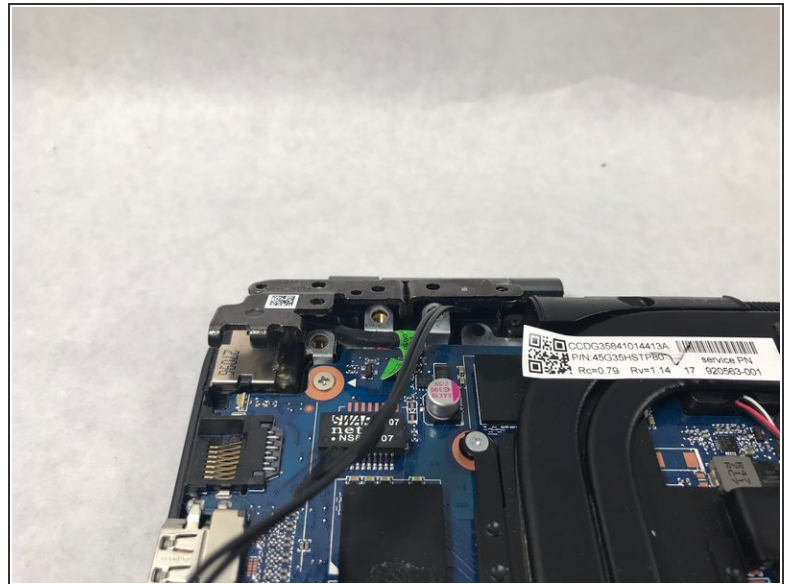
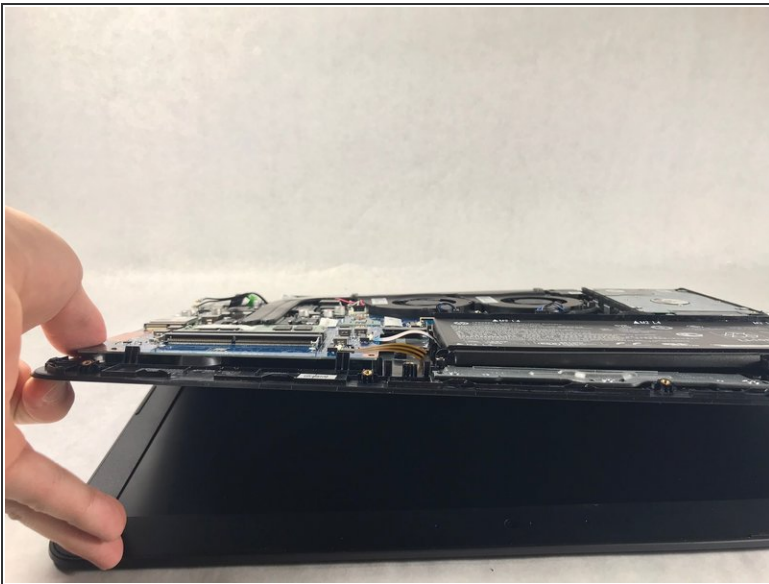
⚠ When removing the wires from the wifi chip, be careful to not damage the connectors.

Step 7



- Flip the switch up that holds the screen cable in place
- Lift up and pull back the cable from the insert

Step 8



- Lift the base of the device up to separate the hinges from the body of the device

Step 9



- Slide the base of the device out from under the hinges
- The screen can now be replaced

To reassemble your device, follow these instructions in reverse order.