



HP Omen 15-ax280nd Hard Drive Replacement

Replace the internal SATA hard drive with a new one.

Written By: Cas Eliëns



INTRODUCTION

Use this guide to replace the internal 2.5" SATA hard drive in your HP Omen laptop with another one.



TOOLS:

- [Phillips #0 Screwdriver](#) (1)
- [iFixit Opening Picks set of 6](#) (1)



PARTS:

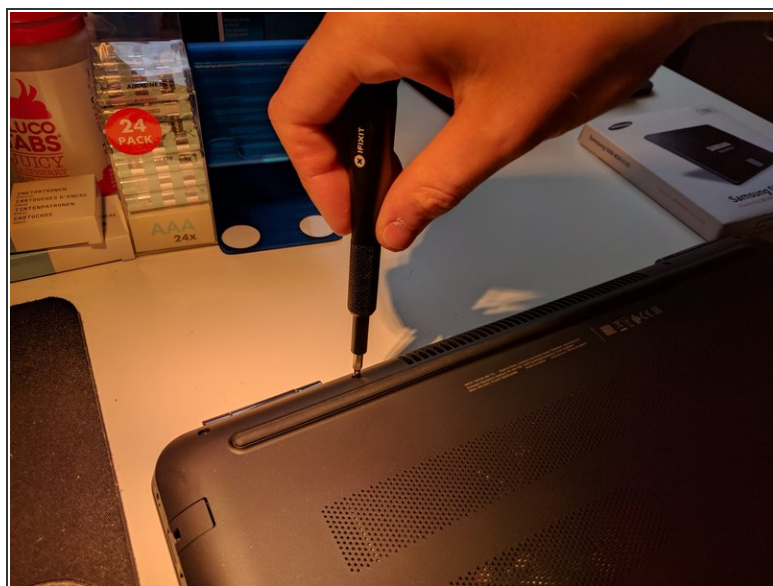
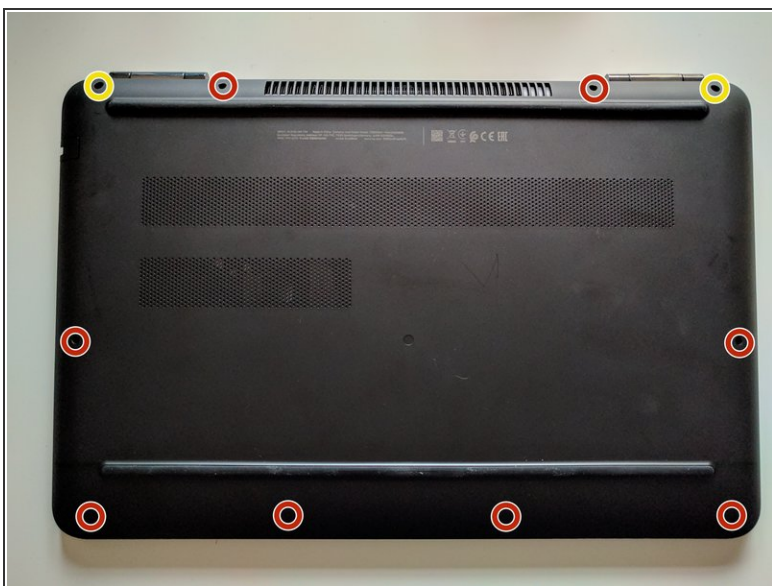
- [1 TB SSD](#) (1)

Step 1 — Turn off your laptop



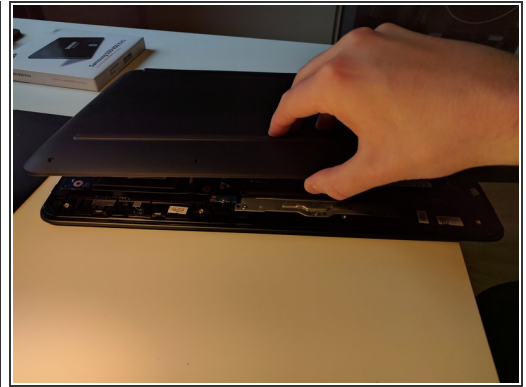
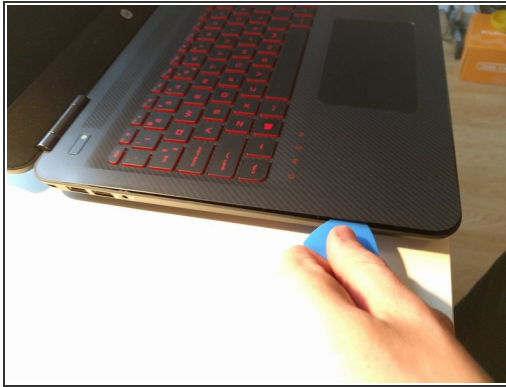
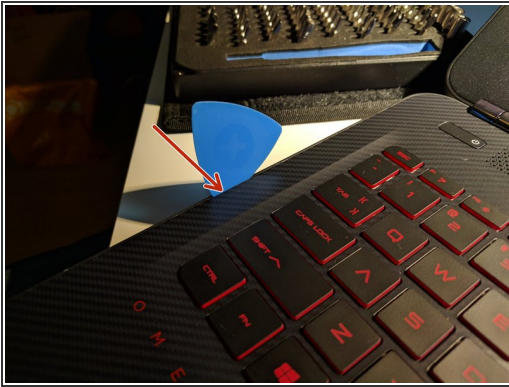
- Disconnect all cables from your laptop


Step 2 — Unscrew the back cover



- Remove 10 screws from the back cover
 - 2 large Philips #0 screws
 - 8 smaller Philips #0 screws

Step 3 — Remove back cover



 The laptop scratches easily, be careful when removing the back cover.

- Turn the laptop over and open the lid
- Remove the back cover
 - Place an opening pick in between the back cover and main body of the laptop
 - Work your way around the body, snapping open the clips holding the cover in place from the inside
- Turn the laptop over again and remove the back cover

Step 4 — Remove hard drive



- The hard drive is located in the back right of the laptop
- A cable runs over the left drive bar, make sure to move it out of the way before removing the drive.
- Pull the back of the drive up and backwards to remove it from the laptop.
- ☑ Make sure to disconnect the SATA power and data cables before fully removing the drive.
- The drive bars can be removed without any tools, simply pull them to the side.

To reassemble your device, follow these instructions in reverse order.