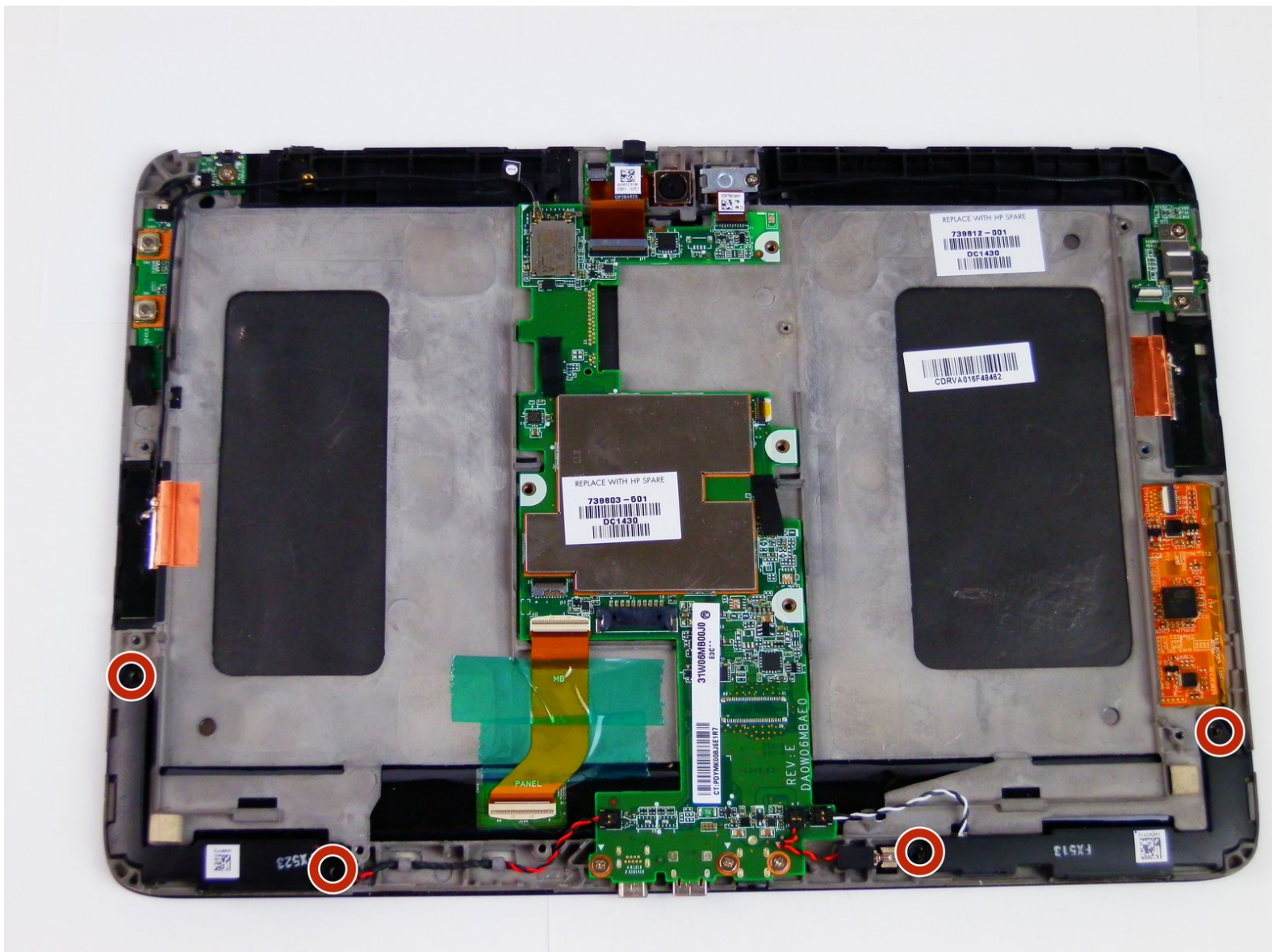




HP Omni 10 Speaker Replacement

This guide will show how to remove and replace HP Omni 10 speakers.

Written By: Alex Miller



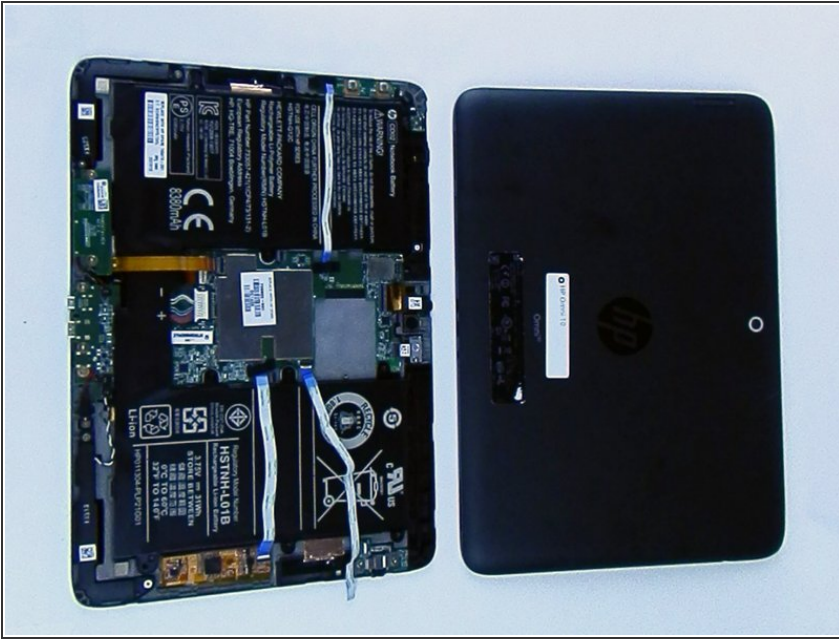
INTRODUCTION

Using a spudger and a 00 Phillips head screwdriver, this guide will show how to remove a pair of speakers from an HP Omni 10 tablet in roughly 5 to 7 minutes.

TOOLS:

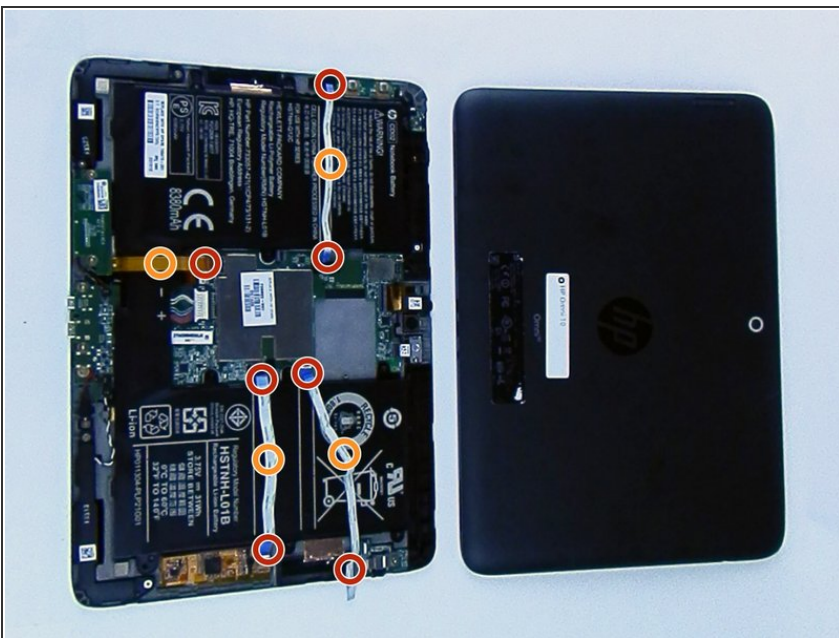
- [Spudger](#) (1)
 - [Phillips #00 Screwdriver](#) (1)
 - [Tweezers](#) (1)
 - [iFixit Opening Tools](#) (1)
 - [64 Bit Driver Kit](#) (1)
-

Step 1 — Battery



- Remove the back cover from the tablet.
- ⓘ The cover is securely fastened to the device and may be difficult to remove.

Step 2



- Push the black plastic security flaps into an upward position.
- Lift the small tab on the security strips up and peel them across the battery. They will be attached via adhesive.
- Lift the tab on the strip up and pull it across the battery.
- ⓘ The orange strip does not fully detach from the tablet like the other three. It will only detach from one side.

Step 3



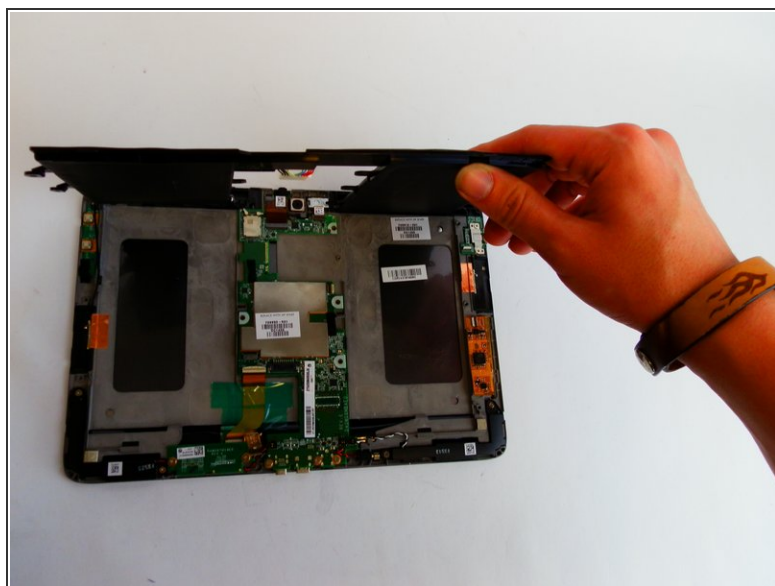
- Unscrew the ten 3.3 mm screws securing the battery using a 00 Phillip's head screwdriver.

Step 4



- Unhook the cord from the edge of the battery.
- Pull the wire circuit out and down.

Step 5



- Lift the battery up by its edges and remove it carefully. There will be adhesive holding the battery down.

Step 6 — Micro Card Reader



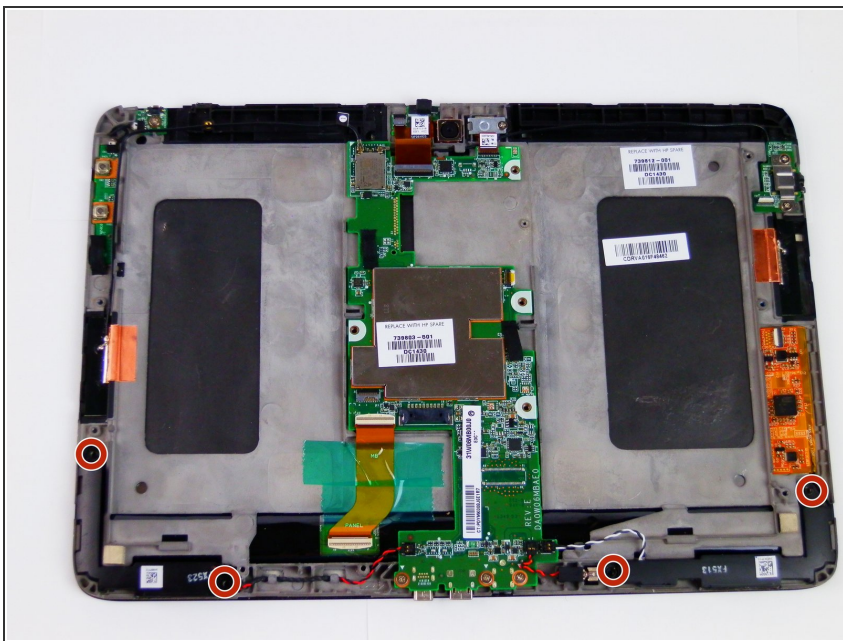
- Unscrew the two 3.3 mm screws using a 00 Phillip's head screwdriver.

Step 7



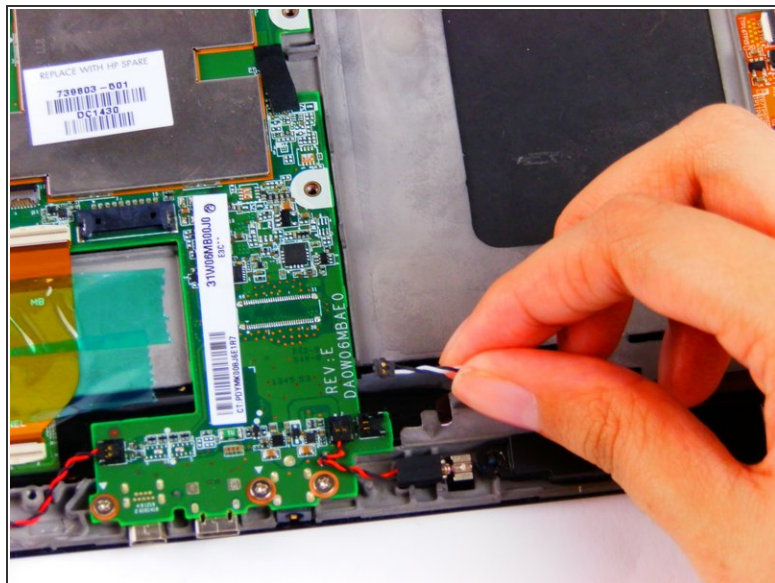
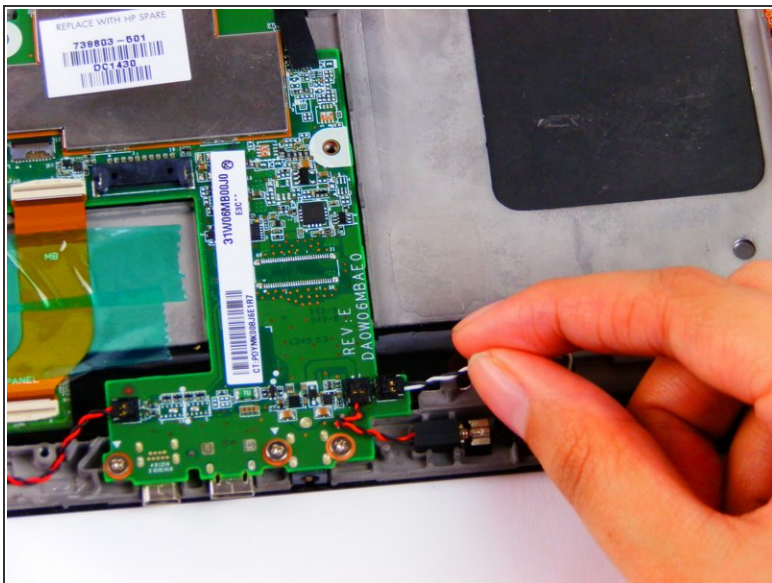
- Lift and remove micro card reader board.

Step 8 — Speaker



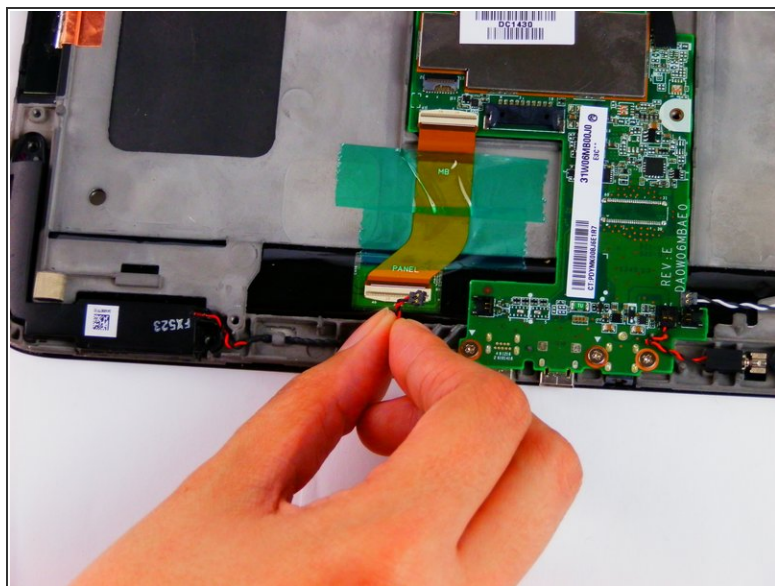
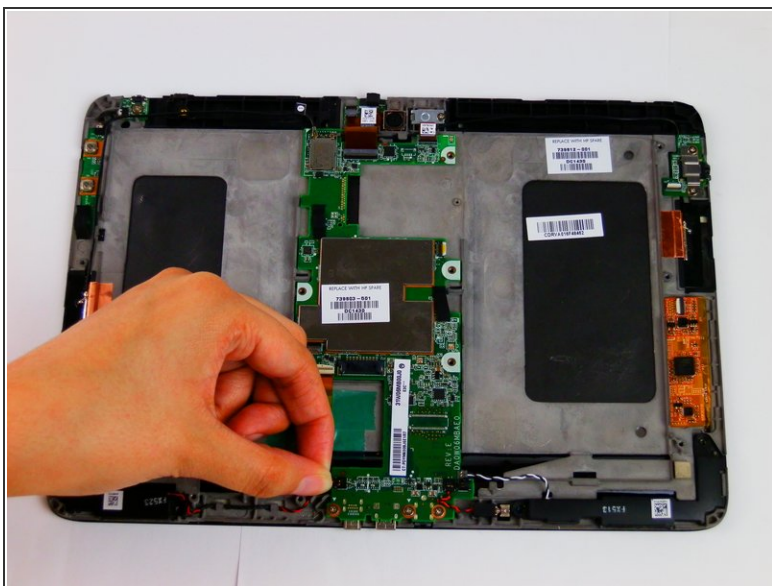
- Unscrew the four 3.3 mm screws using a 00 Phillip's head screwdriver.

Step 9



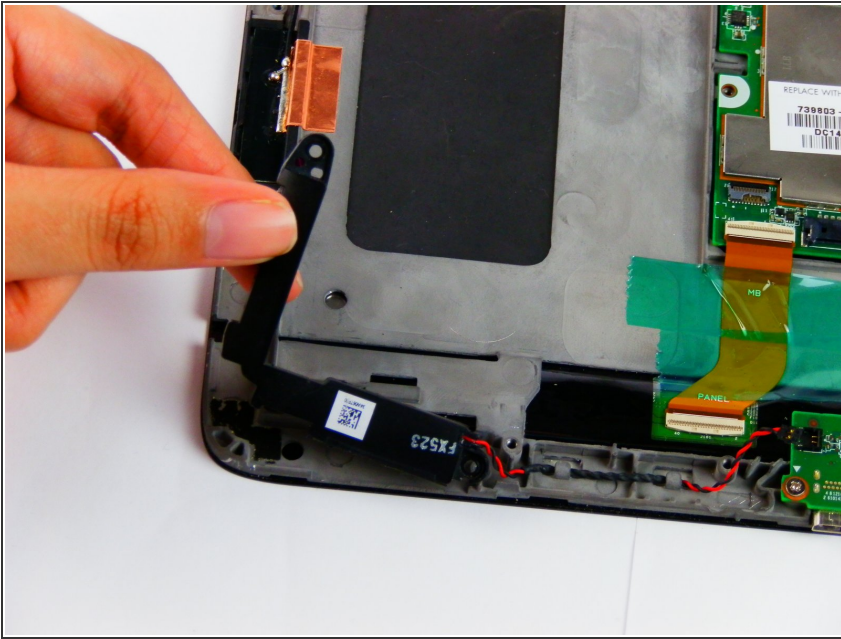
- Pull the black and white wire connector up to disconnect it.

Step 10



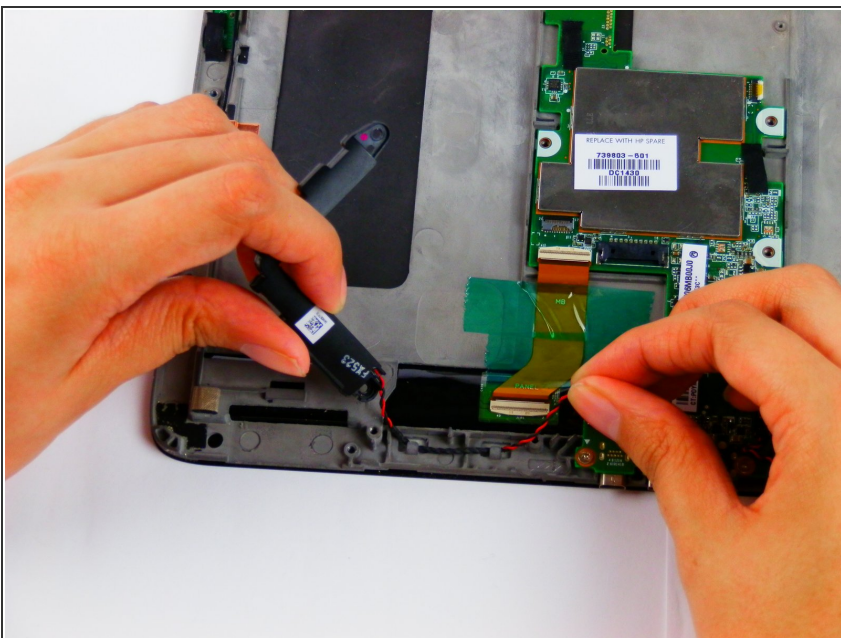
- Pull the red and black wire connector up to disconnect it.

Step 11



- Lift the speaker set out of their sockets.
- ⓘ The speakers will also be attached via adhesive. They may be difficult to remove by hand.

Step 12



- Unhook the left speaker's connector wire to fully remove it from the device.

To reassemble your device, follow these instructions in reverse order.