



HP PSC 2355 Scanner Glass Replacement

This guide demonstrates how to replace the scanner glass. This is the glass surface in which a document is placed on to be scanned.

Written By: Amber Gabaldon



INTRODUCTION

A damaged scanner glass will at best produce poor quality images, and at worst damage other parts of the printer or cause injury. Replacing the scanner glass only requires a couple tools and a little patience.



TOOLS:

- [Spudger](#) (1)
 - [T9 Torx Screwdriver](#) (1)
-

Step 1 — Scanner Lid



- Grasp the scanner lid cover from the front of the device and lift lid all the way up until it stands on its own.

Step 2



- With two hands, grasp the lid on both sides near the hinges and lift straight up to release the lid from each hinge.

Step 3 — Scanner Glass



- Once you have removed the scanner lid, locate the finger notch on the inside top left half of the bezel (control) panel cover.

Step 4



- Place your index finger in the notch and lift up to unsnap the panel.
- Set panel cover aside.

Step 5



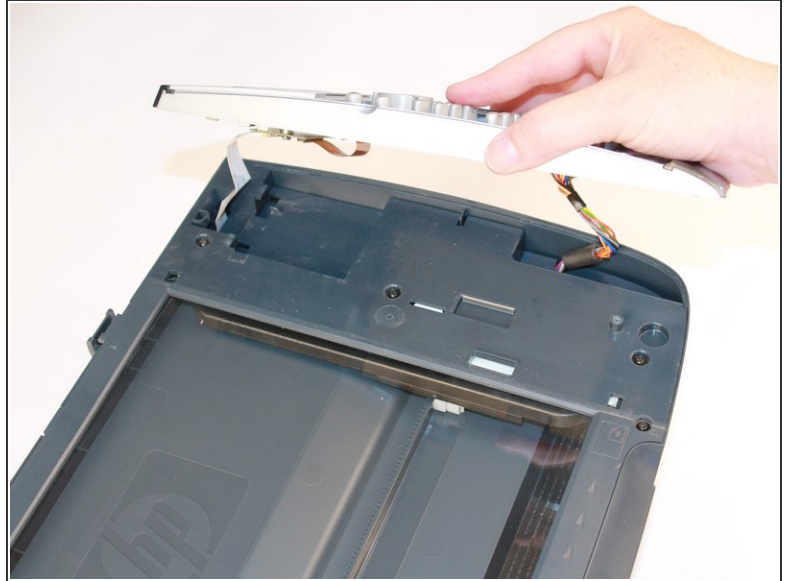
- Use a T9 torx screwdriver to remove the 0.9 cm screw.

Step 6



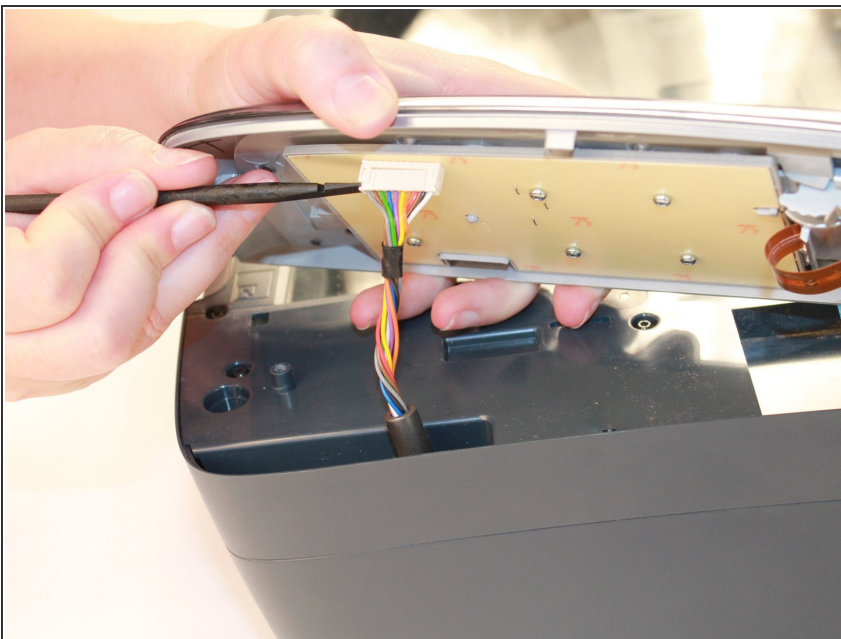
- From the front of the printer, remove the button panel by pulling it towards you while slightly lifting it up.

Step 7



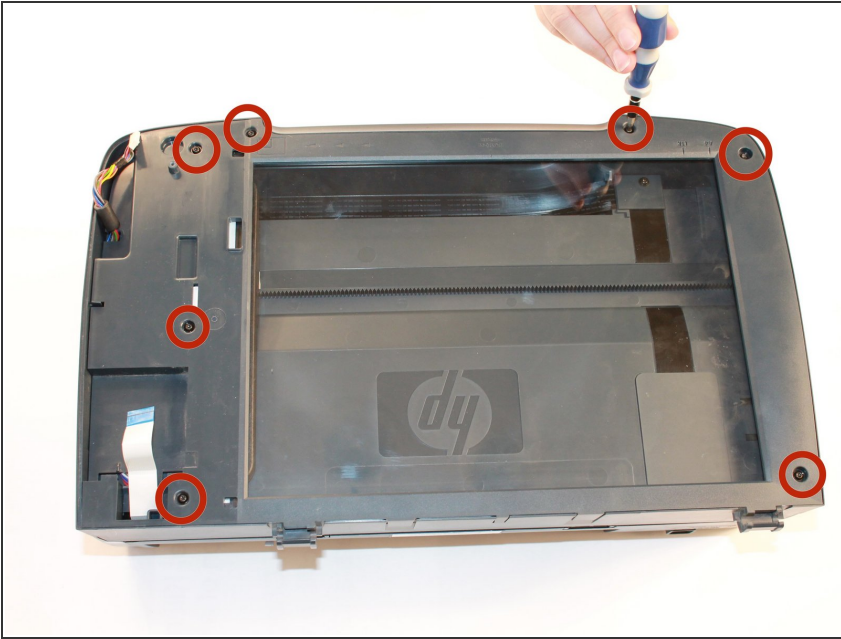
- Disconnect the white ribbon cable by grasping it between your thumb and forefinger.
- Gently pull to release the ribbon from the green circuit board.

Step 8



- Next, use a spudger to pry loose the flat ribbon computer cable by the plastic connection end and carefully separate it from the prongs on the button panel.
- Now the whole button should be completely disconnected from the printer.
- Set button panel aside.

Step 9



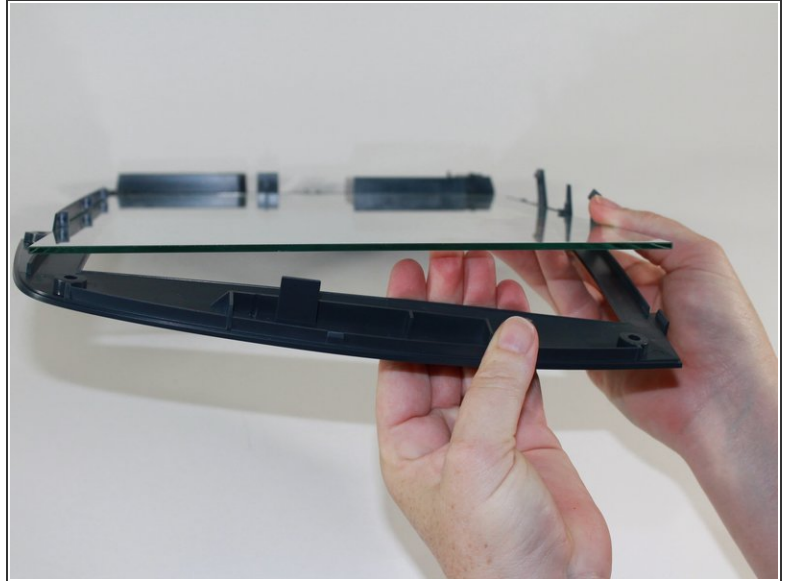
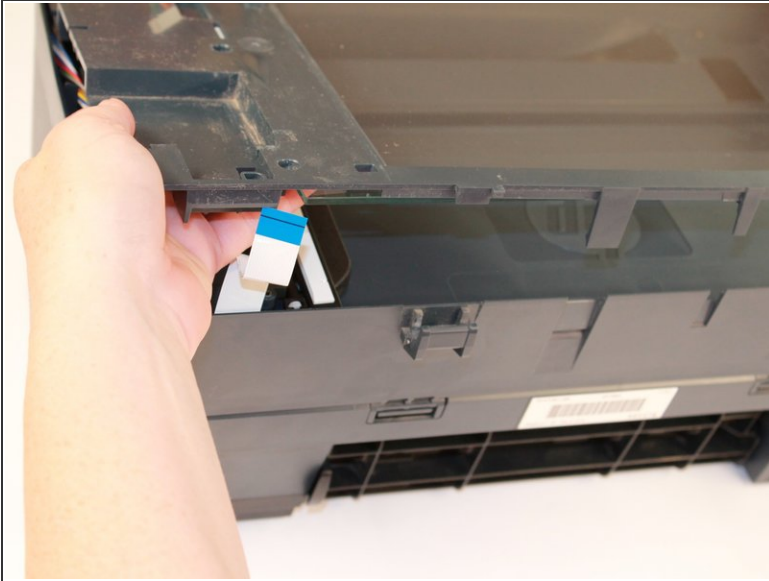
- Using the T9 torx screwdriver, unscrew the seven 0.9 cm black screws on the top plastic frame around the glass.

Step 10



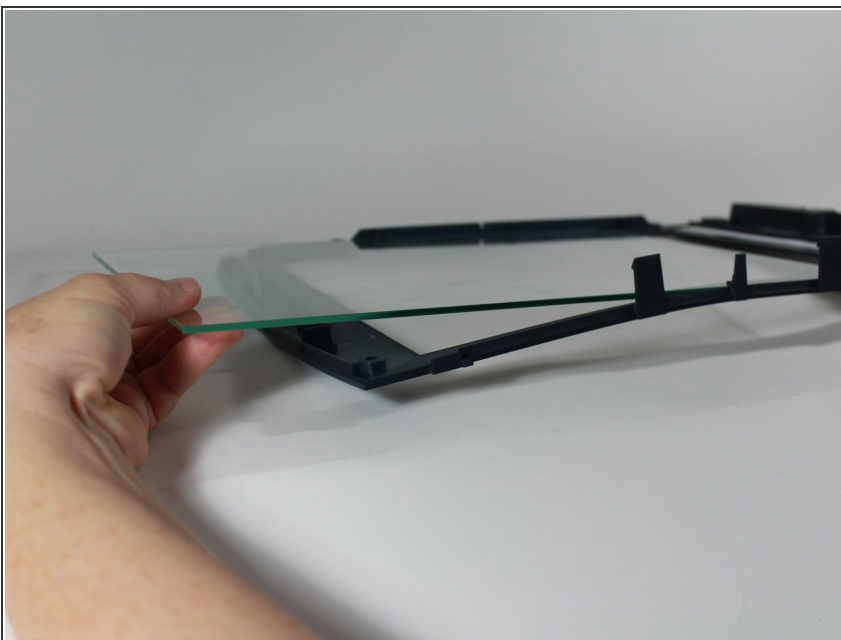
- From the back of the printer, locate the two large plastic tabs as shown.
- With your index fingers underneath each tab, gently and simultaneously pull the tabs towards you and upwards to release the tabs from the plastic clasps behind them.
- Once these tabs are released, you should be able to remove the whole plastic frame that holds the glass.

Step 11



- Gently lift the glass/plastic bed from the edge on the side opposite of the button/control panel section.
- As shown in the second image, gently lift the glass pane up so that it is above the plastic tab that holds it into place.

Step 12



- Proceed to slide the glass pane out and over the plastic tab to remove it completely from the plastic bed.
- Replace the glass with your new glass pane. To fully reassemble the printer, follow these instructions in reverse order.

To reassemble your device, follow these instructions in reverse order.