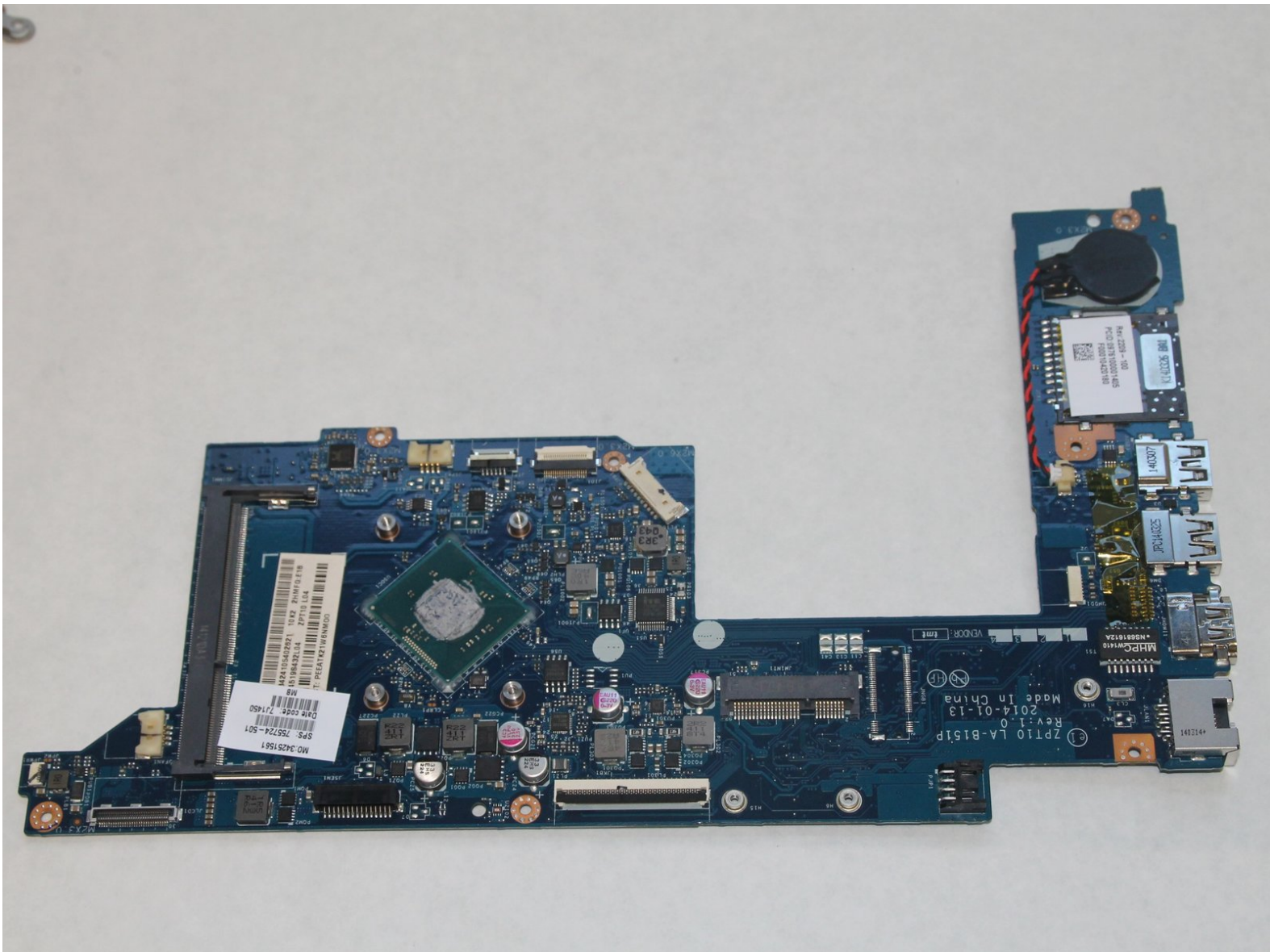




# HP Pavilion 11 x360 Motherboard Replacement

Replace a faulty motherboard.

Written By: Emily



# INTRODUCTION

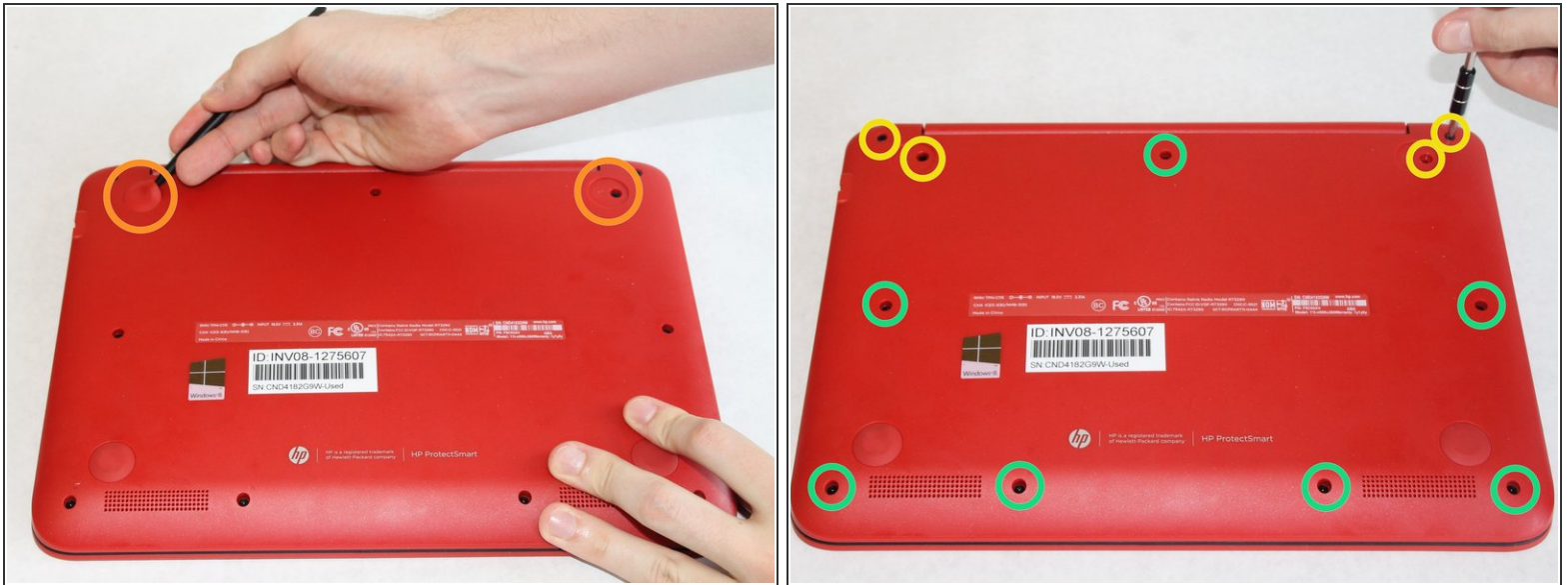
Make sure the device is powered off and is not attached to any electronics.



## TOOLS:

- [Phillips #0 Screwdriver](#) (1)
  - [iFixit Opening Tools](#) (1)
  - [Spudger](#) (1)
-

## Step 1 — Remove Screws



- Use the spudger to pry off the two rubber feet near the hinge of the laptop. This will reveal two hidden 9mm screws.
- You must remove eleven screws.
  - Four 9mm screws with the PH0 screwdriver.
  - Seven 6mm screws with the PH0 screwdriver.

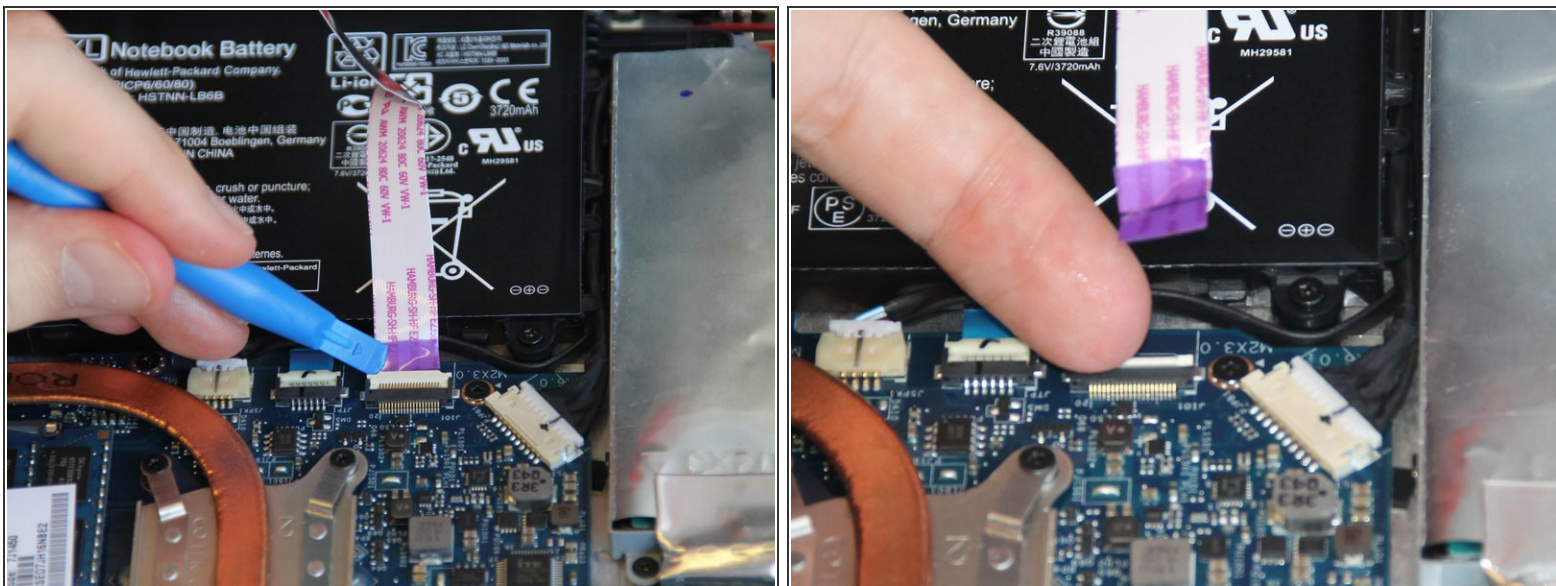


## Step 2 — Remove Backing



- Use the spudger to pry the corners of the laptop near the display hinges.
  - Pry around the seam of the laptop with the plastic opening tool until the backing begins to pull apart.
- ⚠ When you lift the bottom cover, there is a cable connected between the motherboard and the bottom cover. Be careful not to pull the cable loose!

## Step 3 — Detach Cable



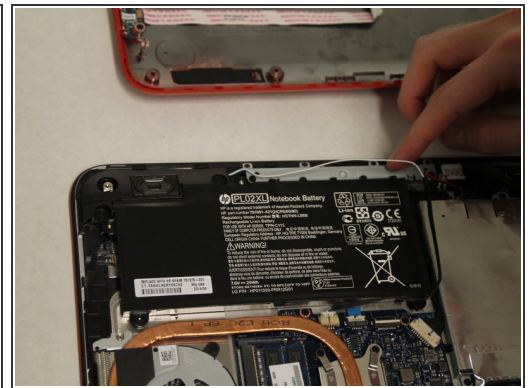
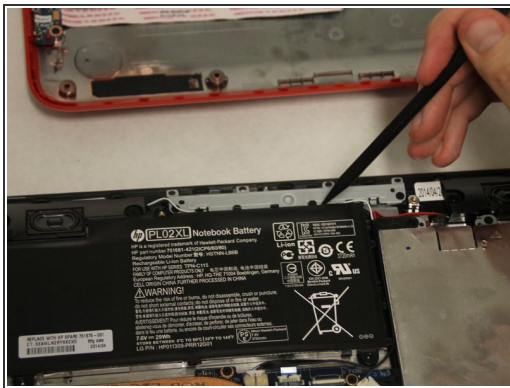
- Use the plastic opening tool to lift the white tab up at the connection.
- Pull the cable outwards.

## Step 4 — Battery



- Remove the four 6mm screws from the battery with the PH0 screwdriver.

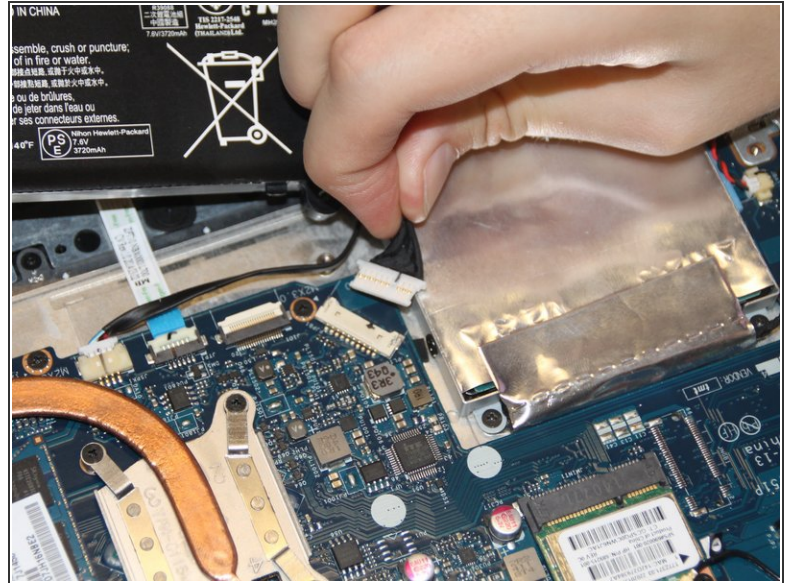
## Step 5



- Use the spudger to pry up the blue/white speaker wires that are routed beside the battery.

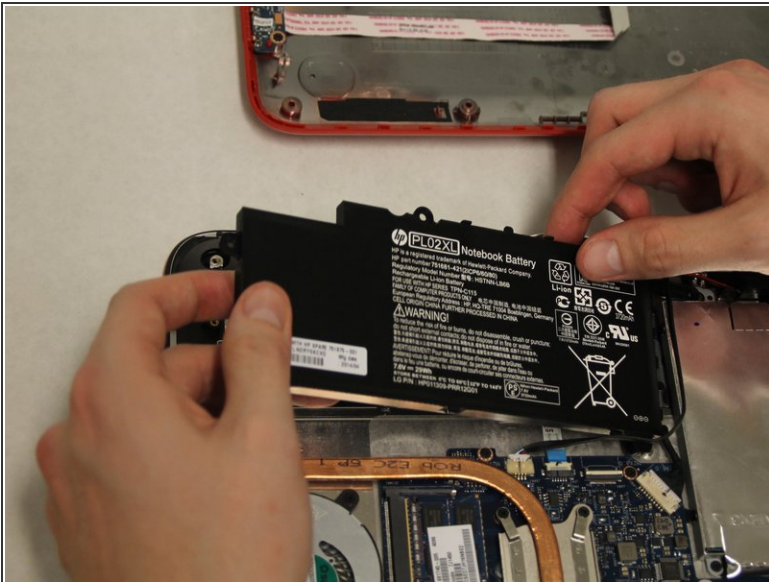


## Step 6



- Remove the battery cable from the motherboard by gently pulling out on the black part of the cable closest to the white tab.

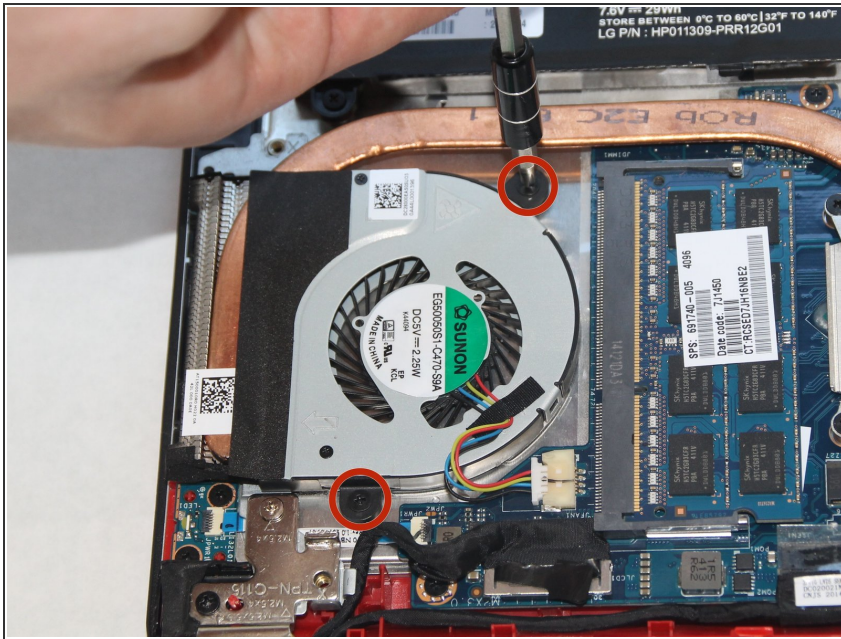
## Step 7



- Remove the battery.

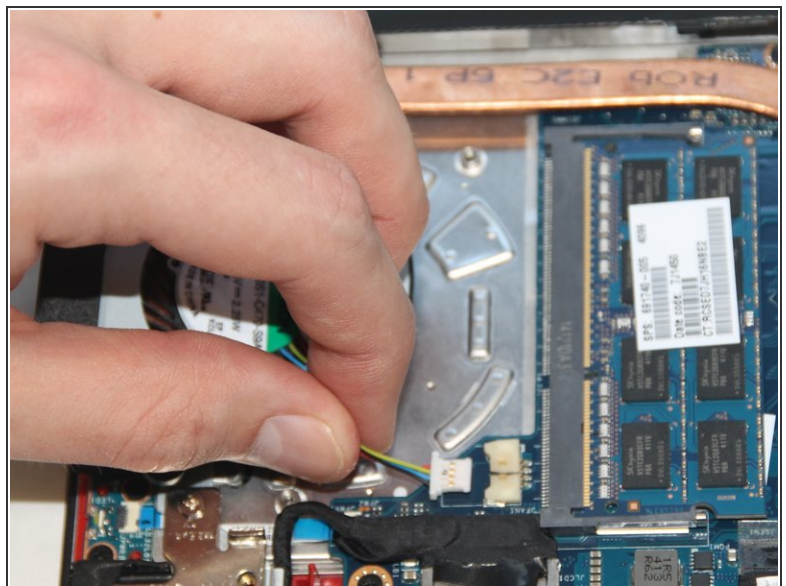
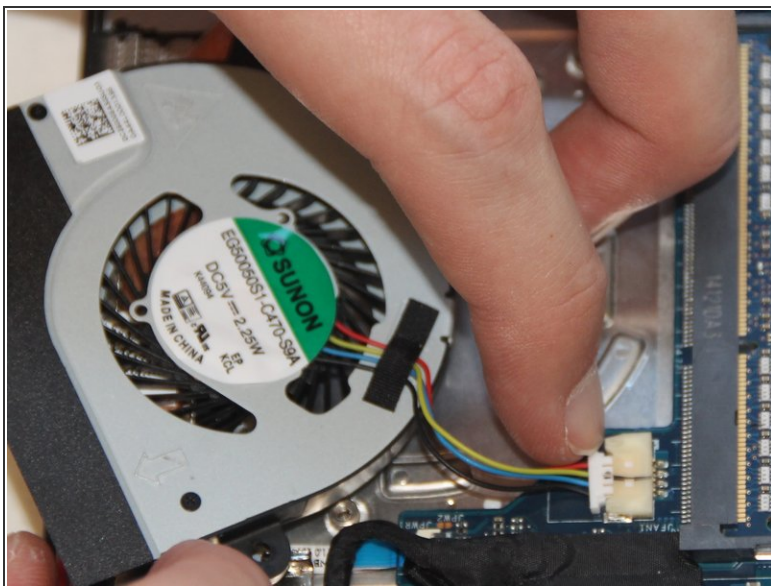


## Step 8 — Remove Screws



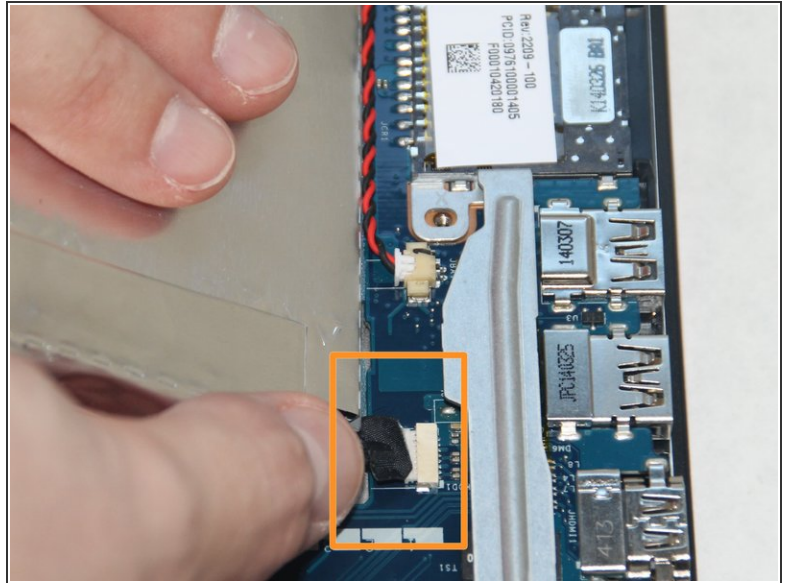
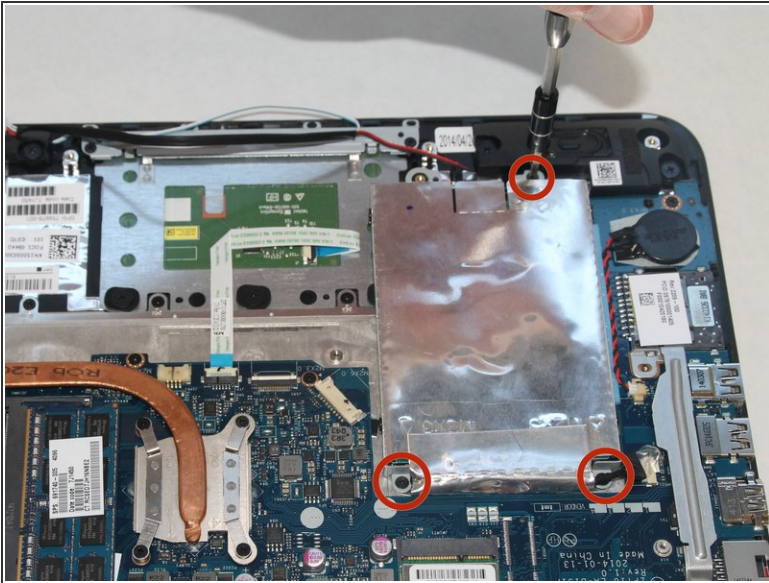
- Remove the two 3mm screws with the PH0 screwdriver.

## Step 9 — Disconnect Cable



- Use your fingernails to slowly loosen the fan connection cable.
- After the cable is slightly pulled from the connection, grab the cable and pull it outwards.

## Step 10 — Remove Hard Drive



- Remove the three 3mm screws using the PH0 screwdriver.
- Pull the hard drive slightly away from the connection to easily disconnect the hard drive cable from the motherboard.
- Remove the hard drive.

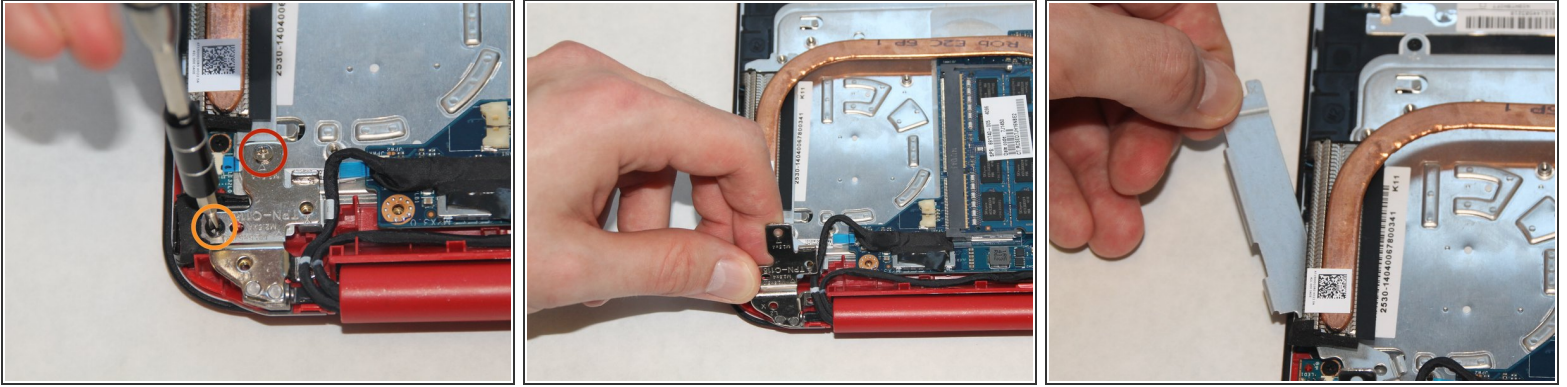
## Step 11



- Remove the four 3mm screws using the PH0 screwdriver.

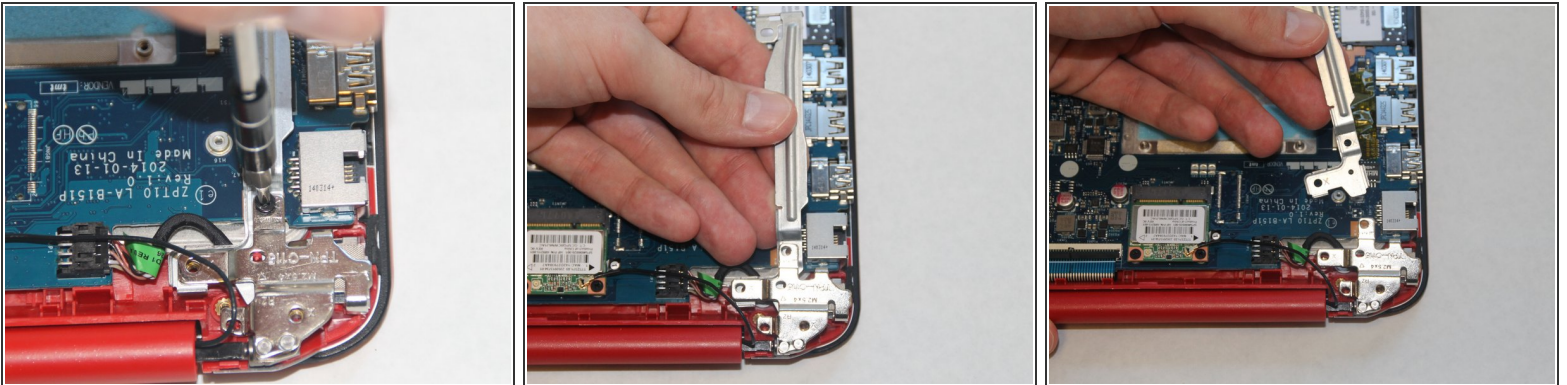


## Step 12



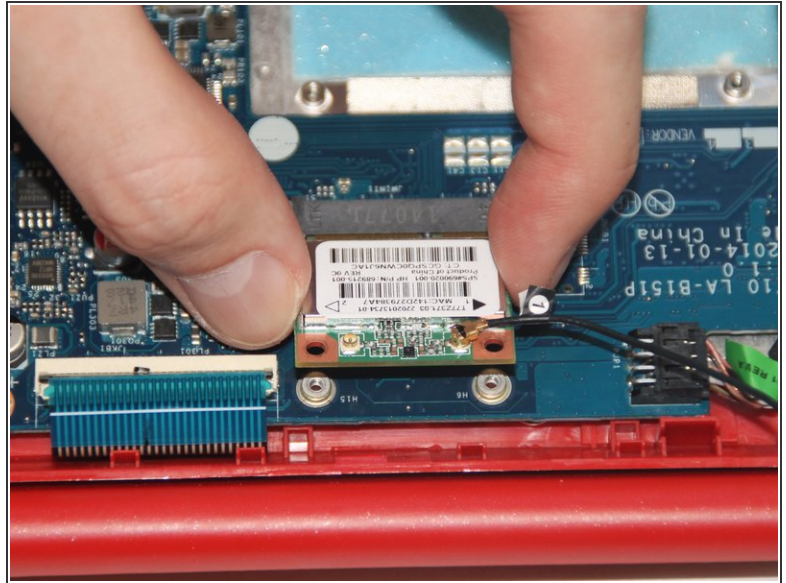
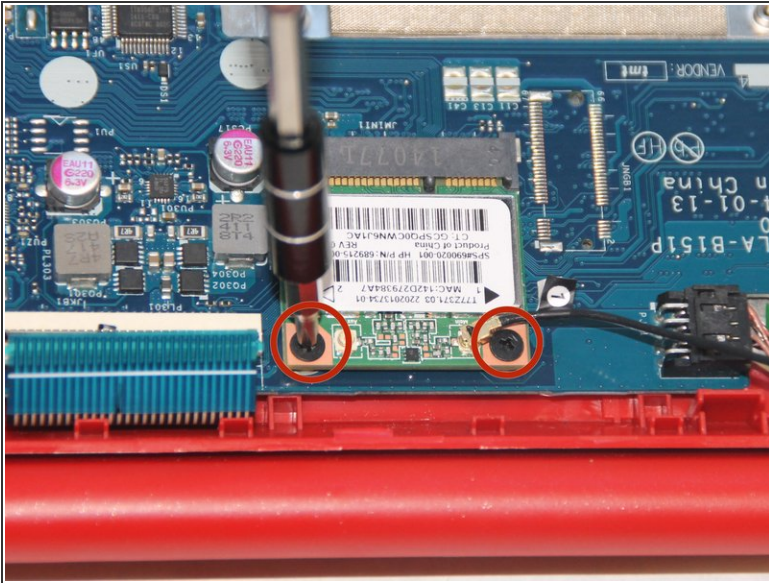
- Remove the two screws from the metal hinge on the power button side using the PH0 screwdriver.
  - One silver 4mm screw
  - One black 5mm screw
- Lift up the hinge to remove the metal bracket underneath.

## Step 13



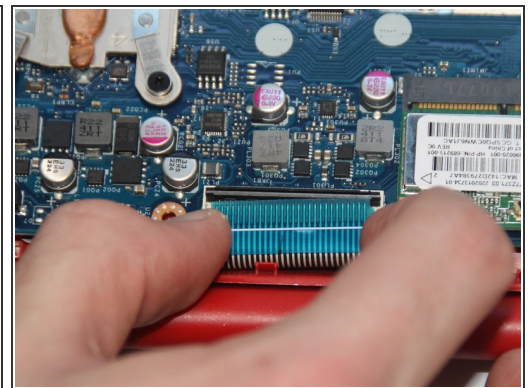
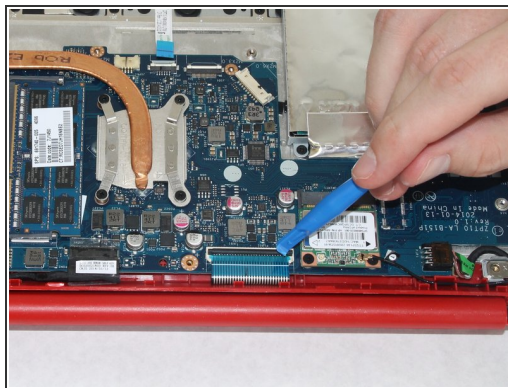
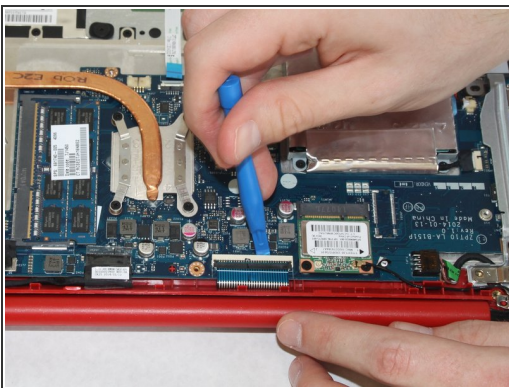
- Remove one 3mm screw using the PH0 screwdriver from the metal hinge located on the power connector side of the computer.
- Lift up the hinge with some force to remove the metal bracket underneath.

## Step 14 — Disconnect the Wireless Card



- Unscrew the two 3mm screws with the PH0 screwdriver.
- Pull the wireless card out of its port to disconnect it from the motherboard.

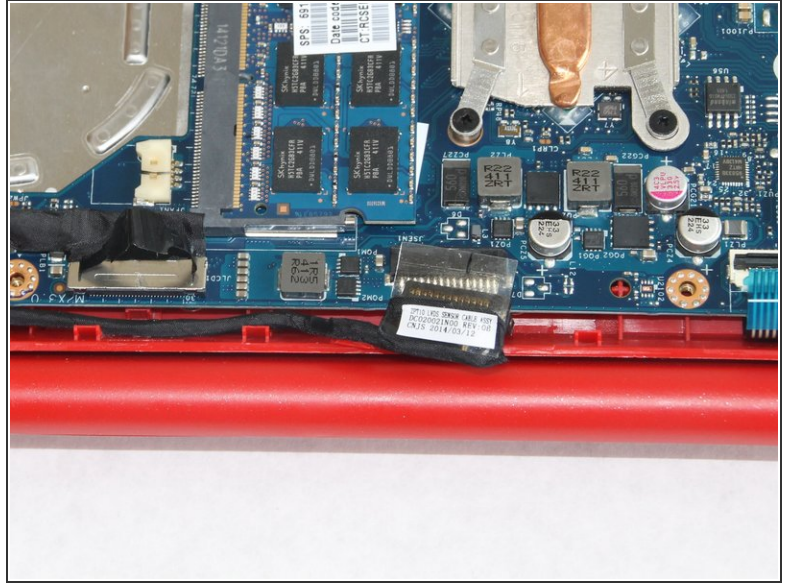
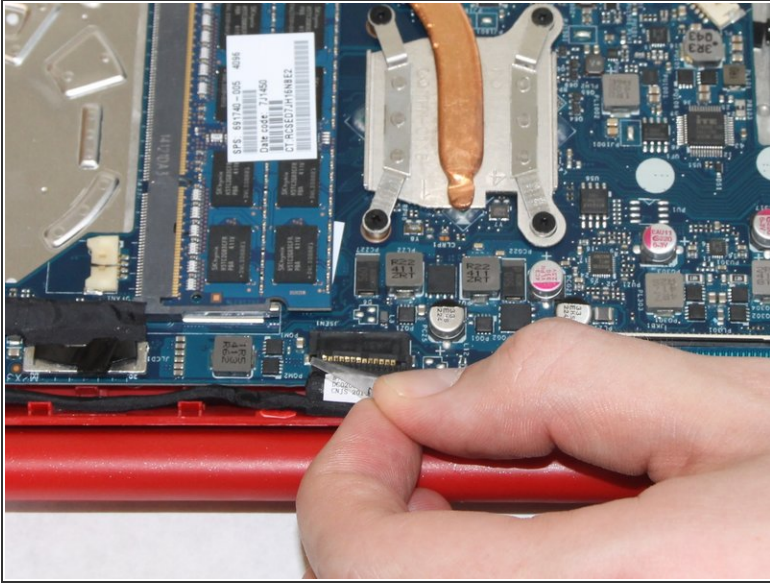
## Step 15 — Disconnect Keyboard Cable



- Push the black tab away from the hinge of the laptop.
- After the black tab has been flipped, pull out the blue cable to disconnect the keyboard cable.

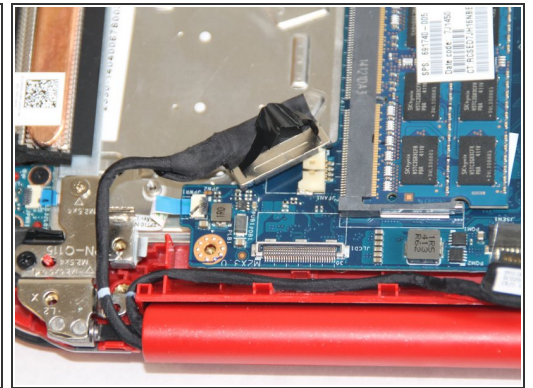
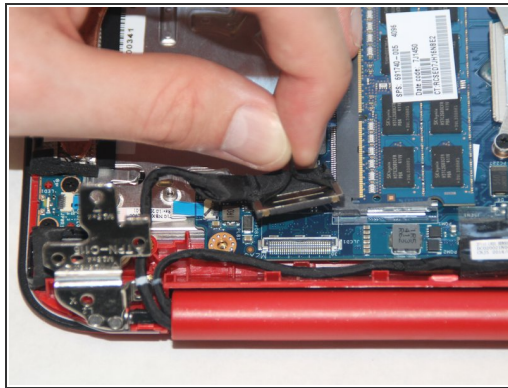
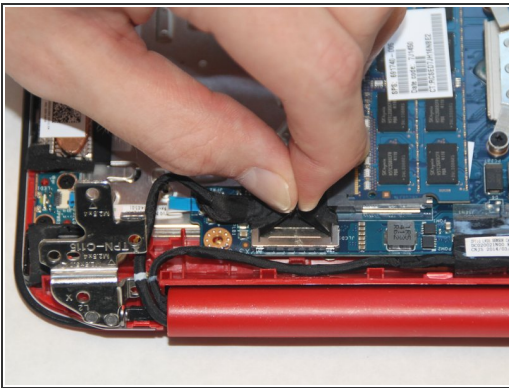


## Step 16 — Disconnect the Webcam Cable



- Pull horizontally toward the hinge of the laptop to disconnect the webcam cable.

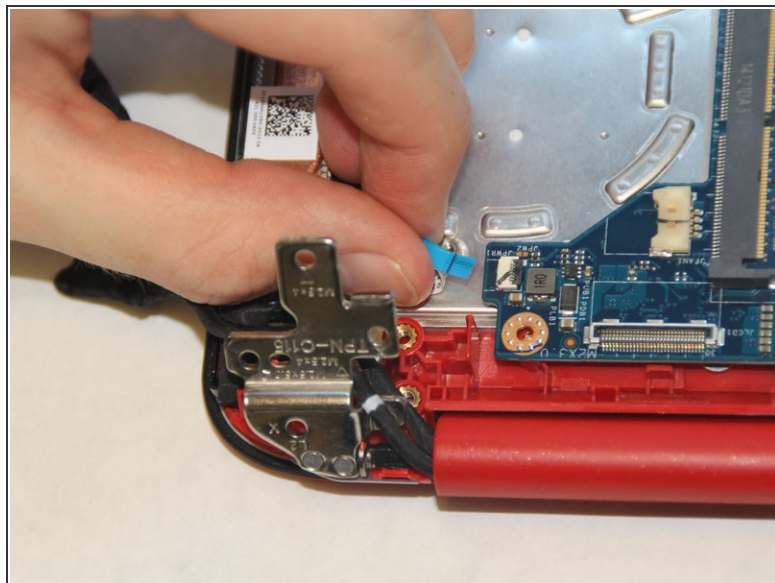
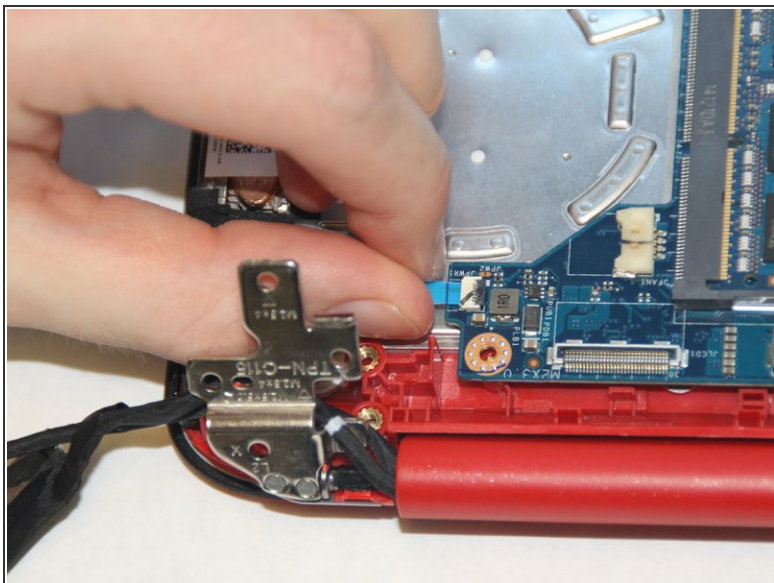
## Step 17 — Disconnect Display Cable



- Pull up on the black tabs to disconnect the display cable.

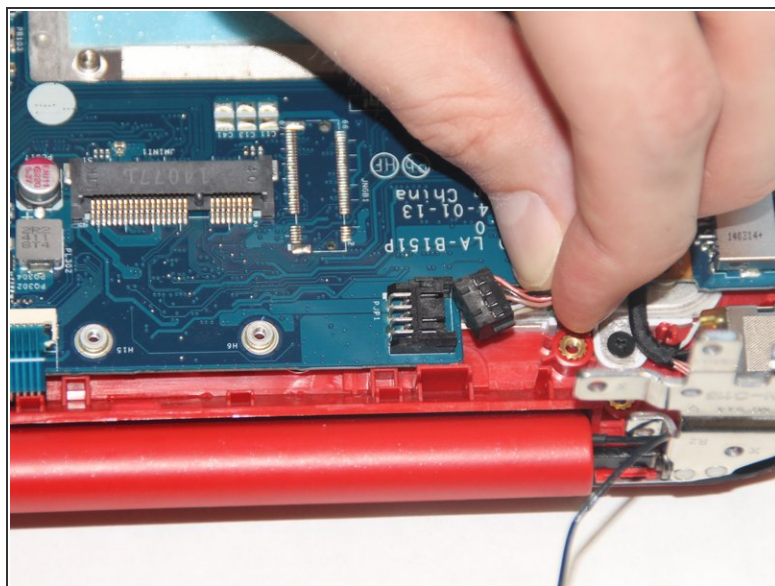
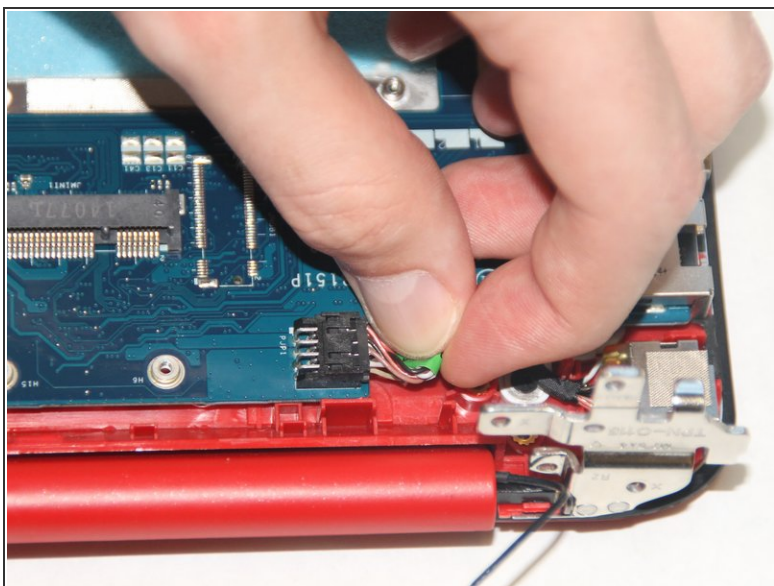


## Step 18 — Disconnect Power Button Board



- Pull the cable horizontally away from the motherboard to disconnect the power button board cable.

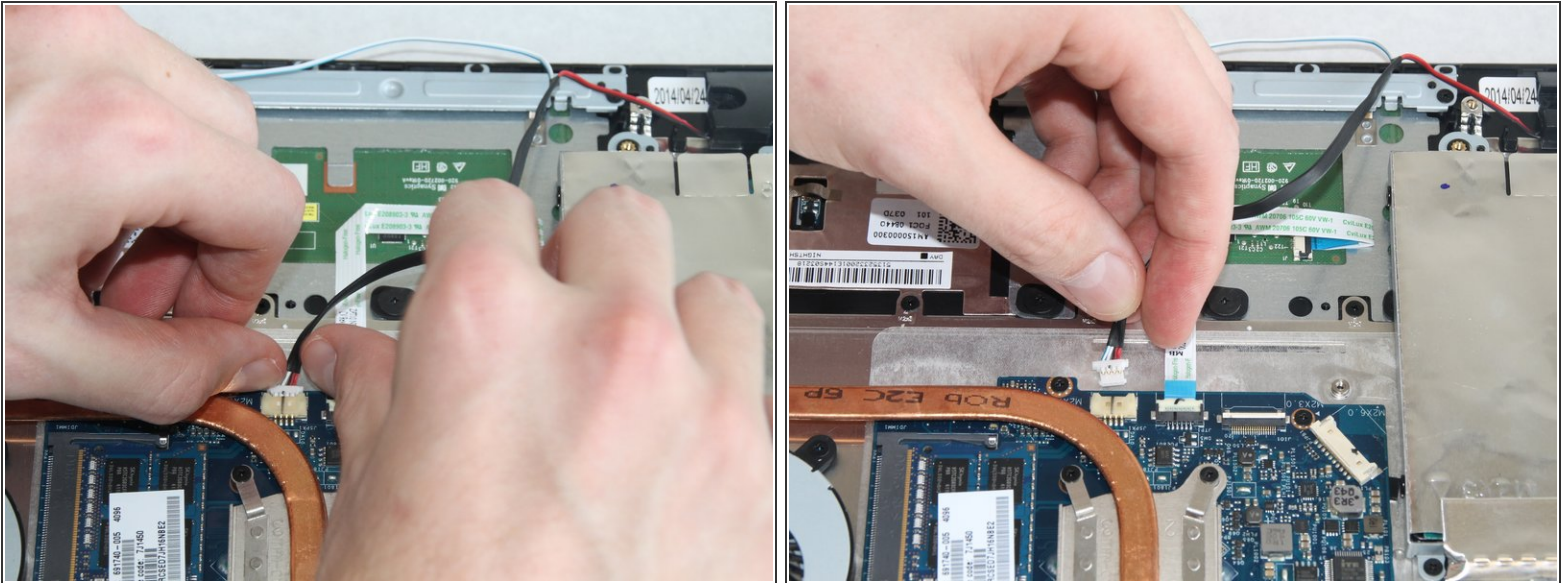
## Step 19 — Disconnect the Power Connector Cable



- Pull the cable horizontally away from the motherboard to disconnect the power connector cable.

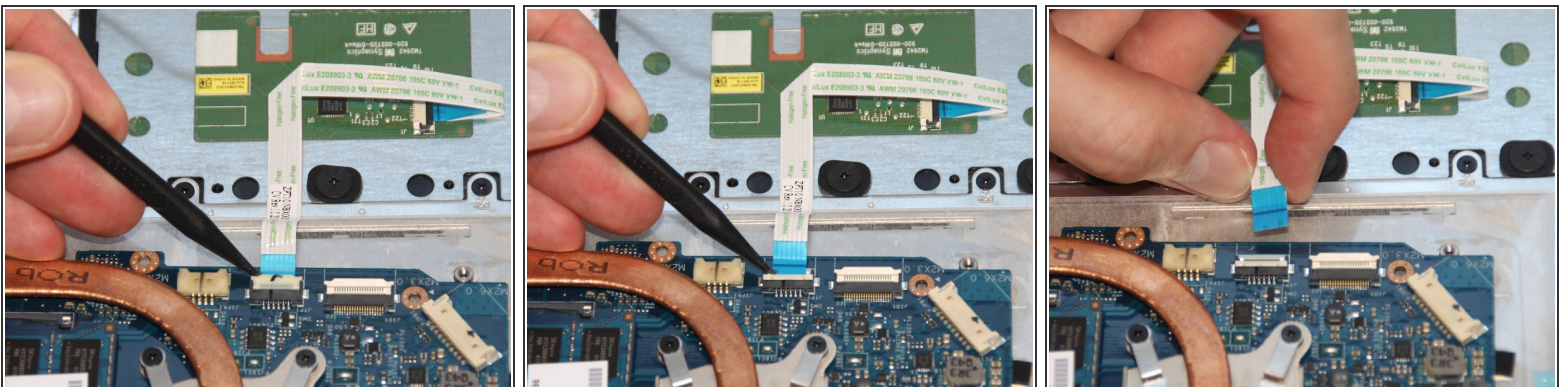


## Step 20 — Disconnect Speaker Cable



- Pull the cable horizontally away from the motherboard to disconnect the speaker cable.

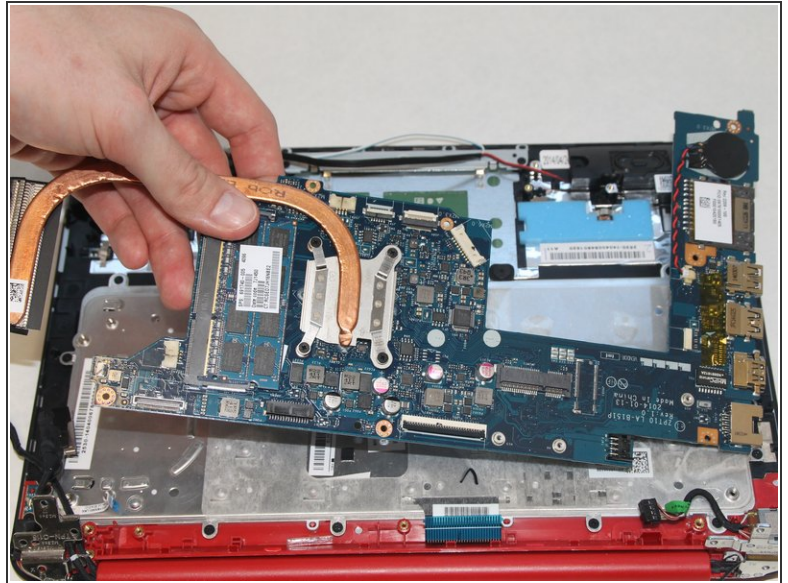
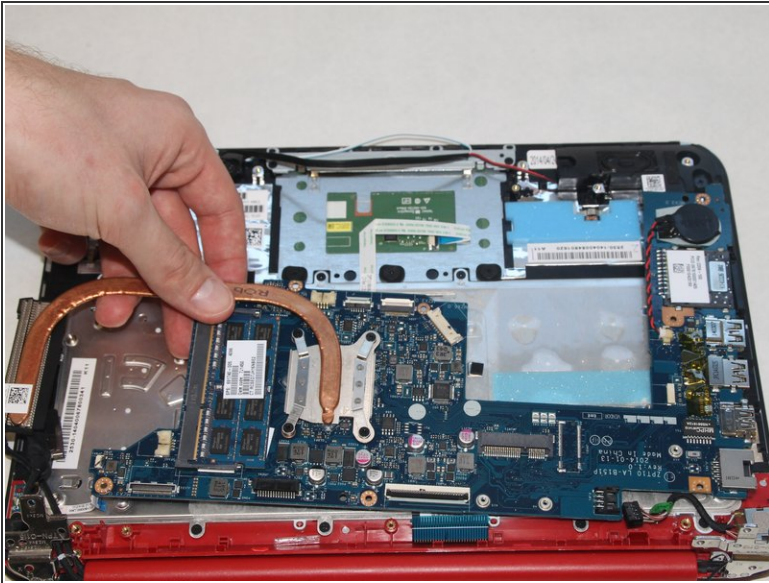
## Step 21 — Remove Touch Pad Cable



- Push the white tab up toward the hinge of the laptop.
- Disconnect touch pad cable by pulling up and away from the motherboard.

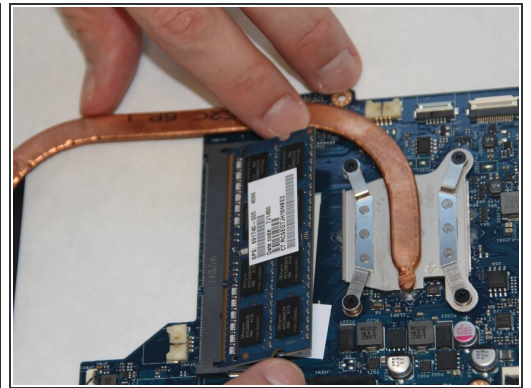
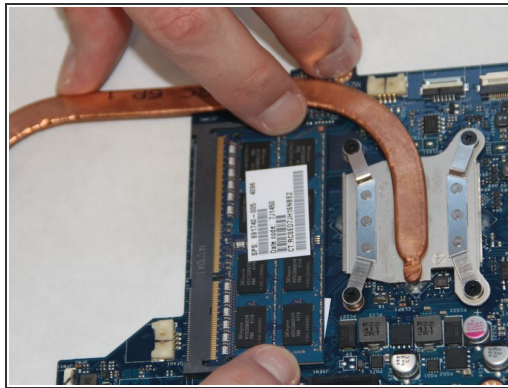
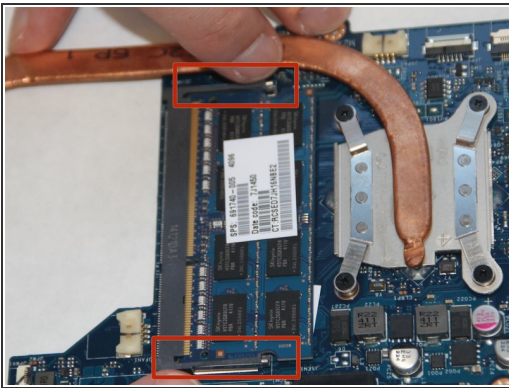


## Step 22



- Lift up to remove the motherboard.

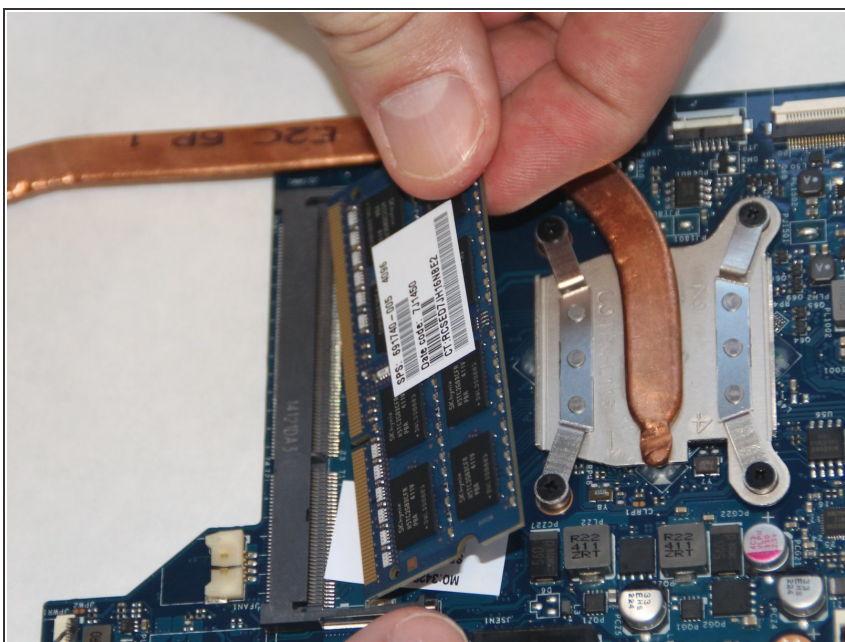
## Step 23



- Push outwards on the two black tabs to pop the RAM up.

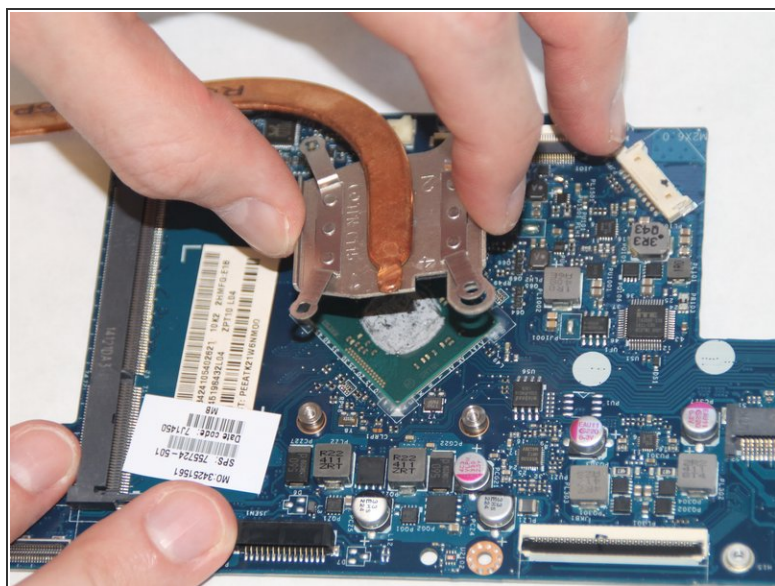
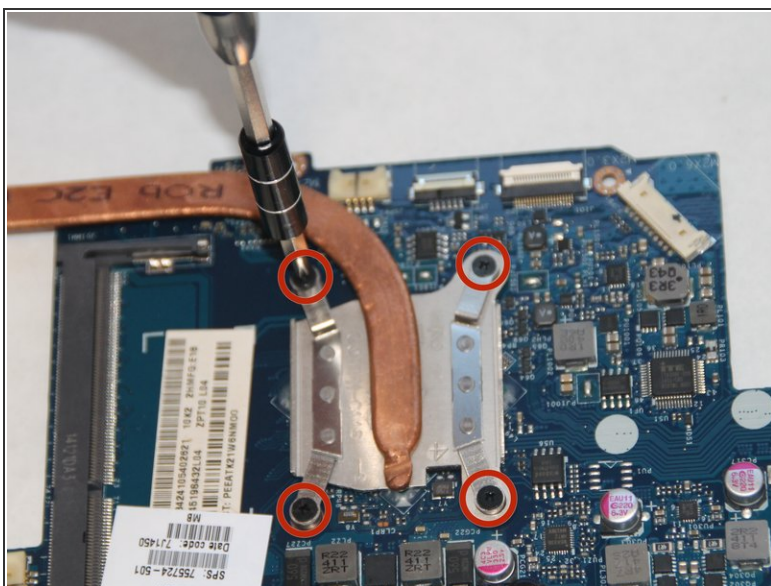


## Step 24



- Remove the RAM.

## Step 25



- Remove the four 3mm screws using the PH0 screwdriver.
- Lift up the heat sink to remove it from the motherboard.

To reassemble your device, follow these instructions in reverse order.