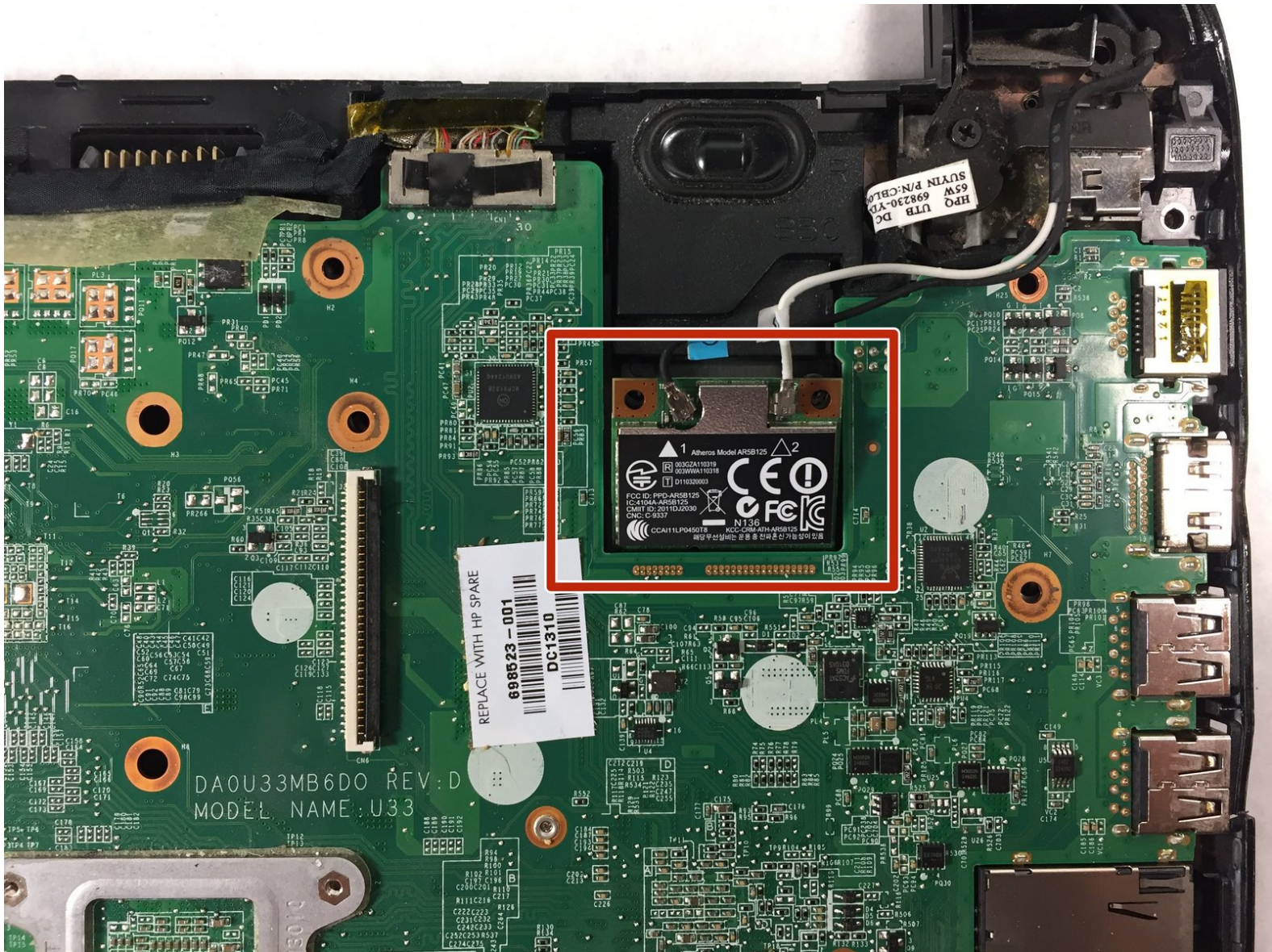




HP Pavilion 14-b120dx Wireless Card Replacement

This guide will show you how to remove and replace the wireless card from the motherboard of your HP Pavilion 14-b120dx.

Written By: Erin Lavalla



INTRODUCTION


This Guide will be showing how to remove and replace and Wireless Card from the Motherboard using the iFixit J00 Screwdriver.

TOOLS:

- [Phillips #0 Screwdriver](#) (1)
 - [iFixit Opening Tools](#) (1)
 - [JIS Driver Set](#) (1)
-

Step 1 — Battery



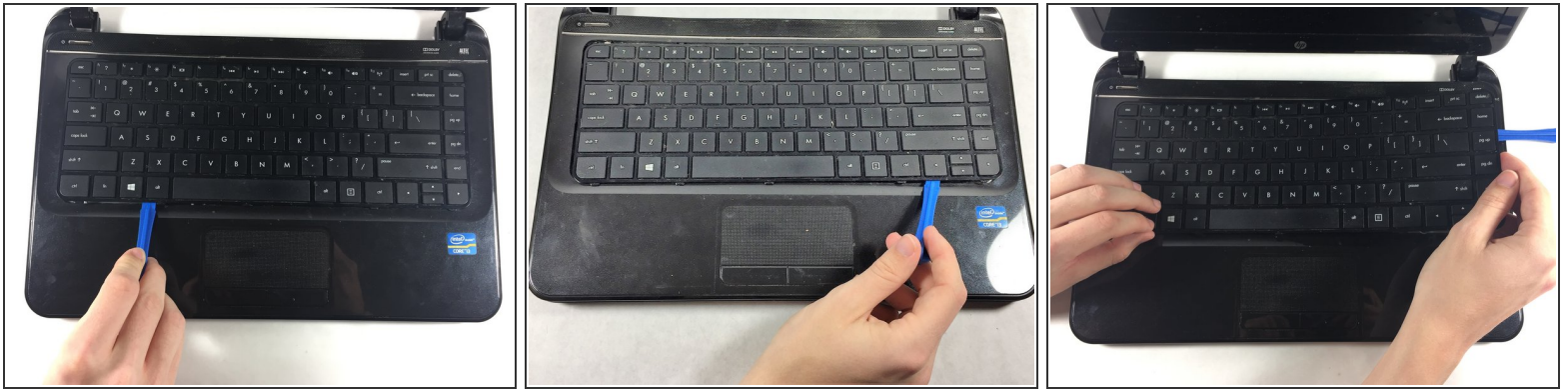
 Power down the laptop and detach the charging cord (failure to do so can result in electrical shock).


Step 2



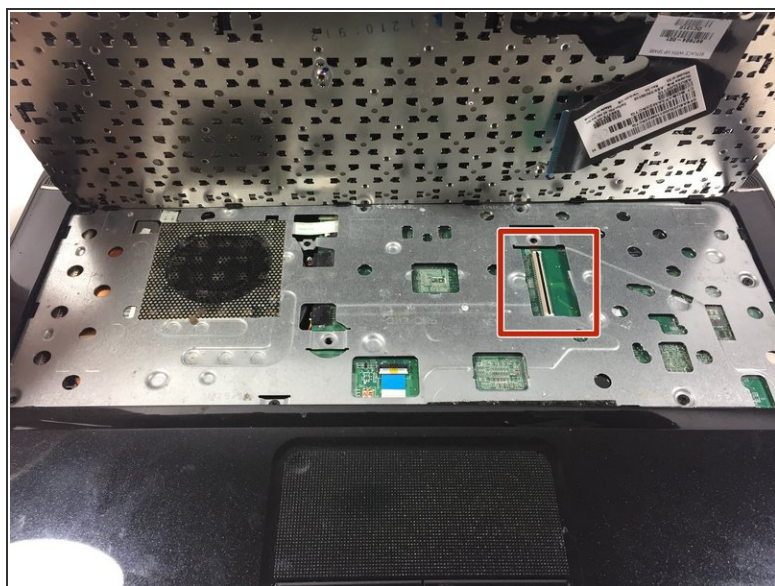
- Flip the laptop upside down so that the bottom is facing you.
- Push the slide on the right toward the center of the laptop, releasing the battery latch.
- Lift the battery up and away from the laptop.

Step 3 — Keyboard



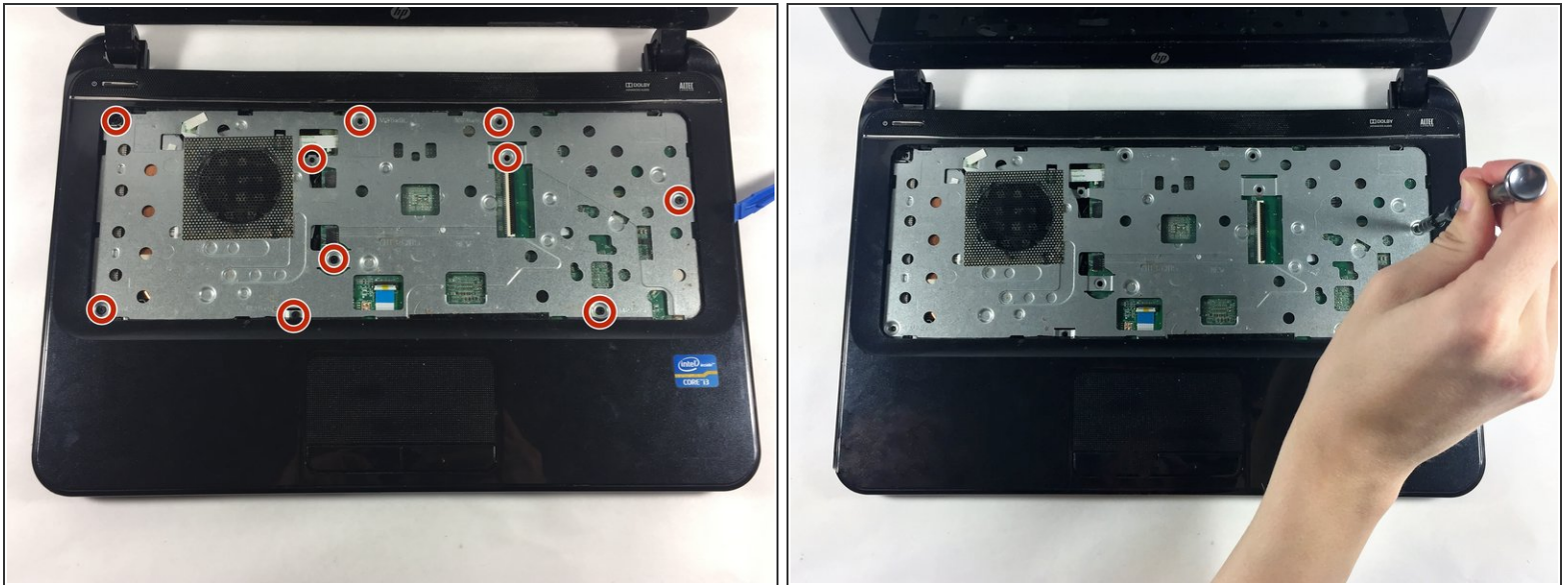
- Insert the plastic opening tool between the keyboard and the palm rest.
 - Pry upwards until the keyboard section detaches from the laptop.
 - Repeat this around the edge of the entire keyboard.
-  Sections will make loud snapping noises as they detach from the palm rest - this is normal.

Step 4



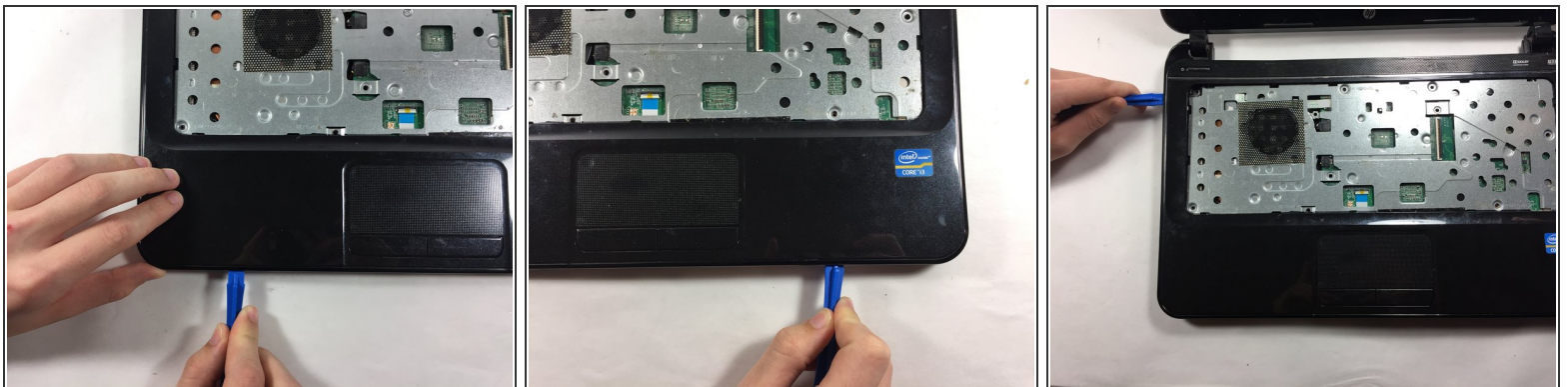
- Lift the keyboard slowly up until the connecting cable is exposed.
- Carefully lift the flap on the ZIF connector using a fingernail or plastic opening tool. This will release the cable.
- Detach the cable.

Step 5 — Palm Rest



- Unscrew the 10 6.0 mm screws under the keyboard housing with a Philips #0 head screwdriver.

Step 6



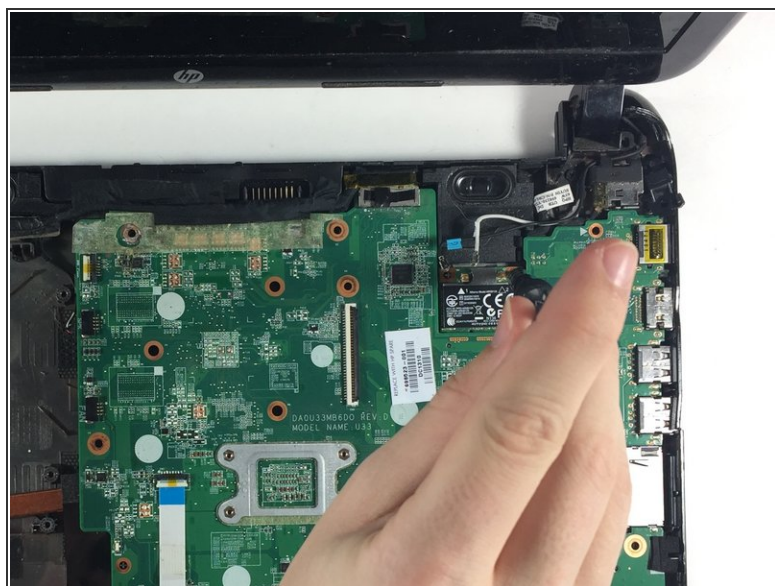
- Insert the plastic opening tool into the seam between the palm rest and the laptop.
 - Pry upwards until the palm rest separates from the laptop.
 - Repeat this process around the entire computer.
- i** These steps will be similar to the ones you took to remove the keyboard. Again, you will hear snapping noises.

Step 7



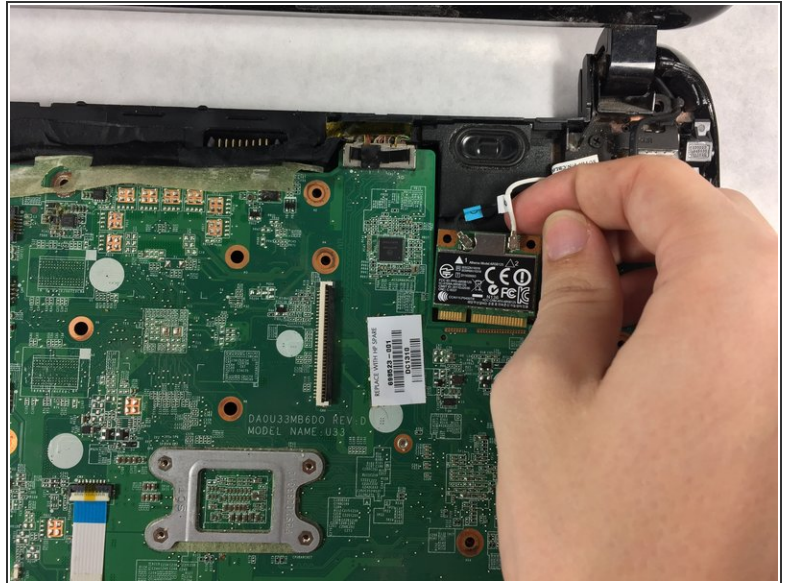
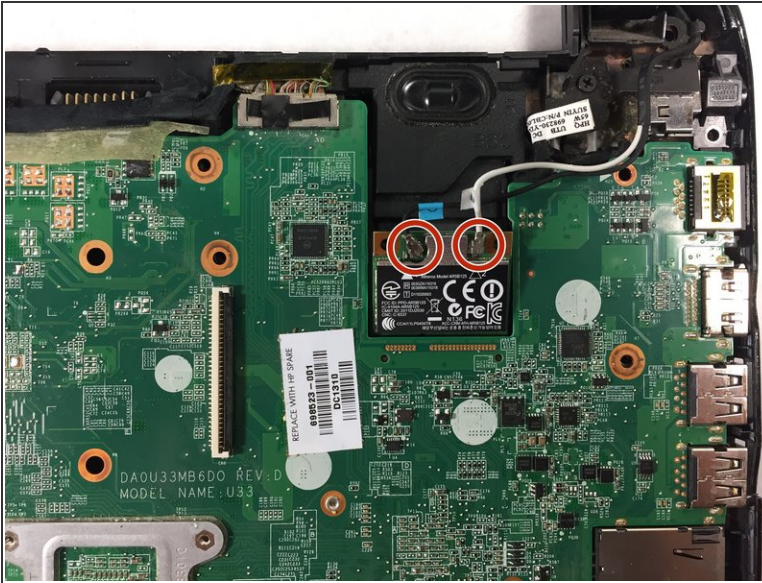
- Lift upwards to remove the palm rest.

Step 8 — Wireless Card



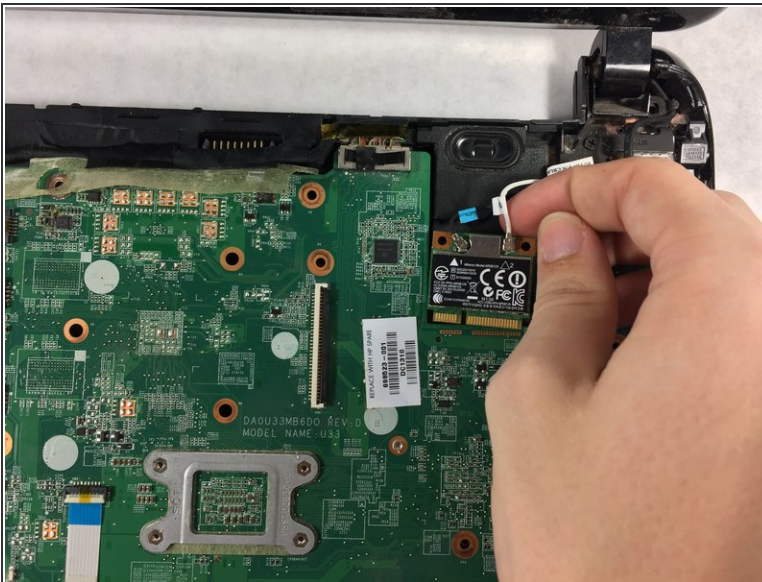
- Remove the two 4.0 mm screws using a Philips #00 head screwdriver.

Step 9



- Detach the two wires connecting to the motherboard to the wireless card.

Step 10



- Slide the card upwards and outwards to detach it from the motherboard.

To reassemble your device, follow these instructions in reverse order.