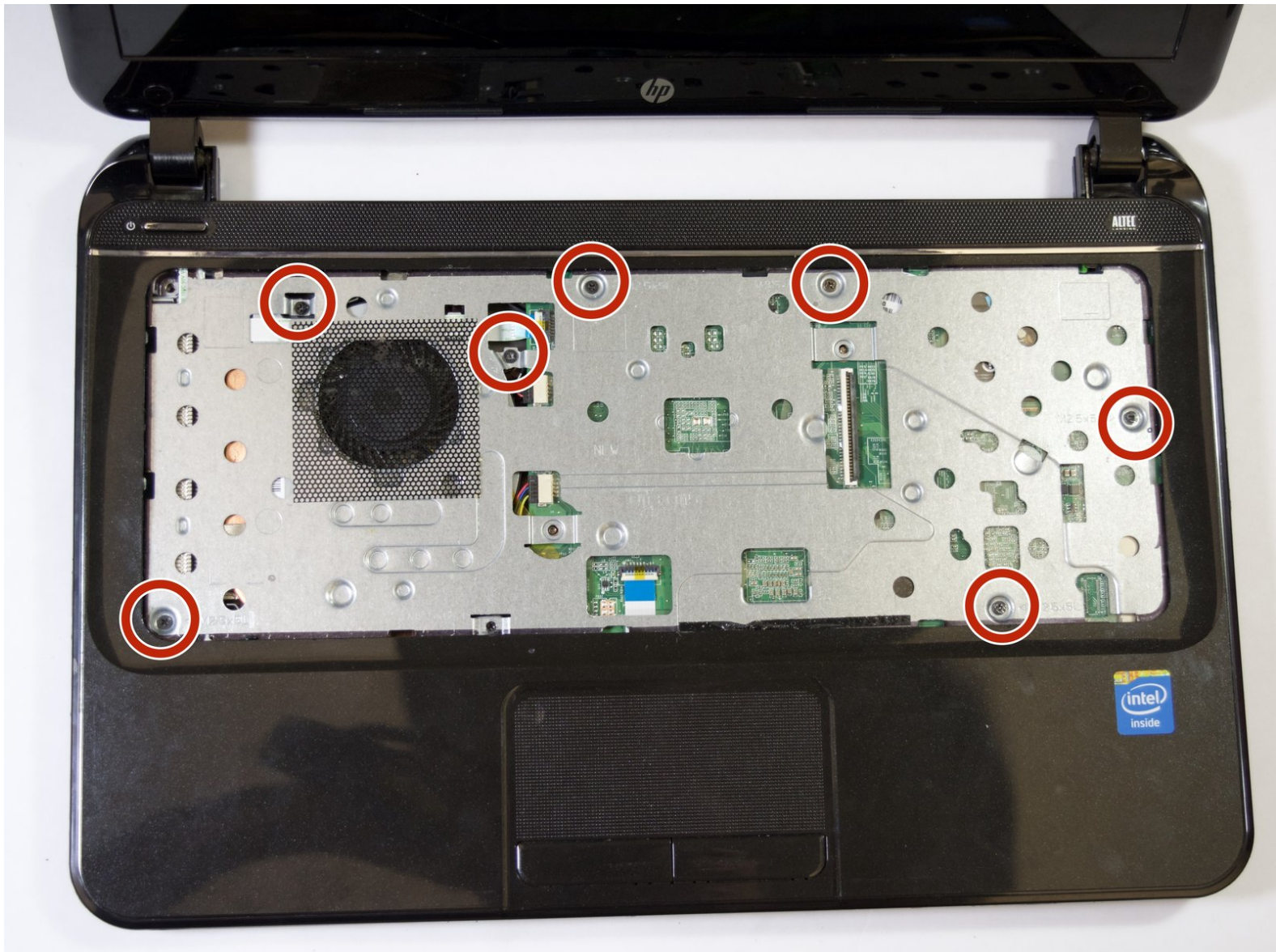




HP Pavilion 14-c015dx Chromebook Solid State Hard Drive Replacement

This guide will help users replace a broken hard drive.

Written By: William Busby



INTRODUCTION

This guide will show you the steps to replace the Solid State Hard Drive.



TOOLS:

- [Phillips #1 Screwdriver](#) (1)
 - [Metal Spudger](#) (1)
 - [iFixit Opening Tools](#) (1)
-

Step 1 — Keyboard



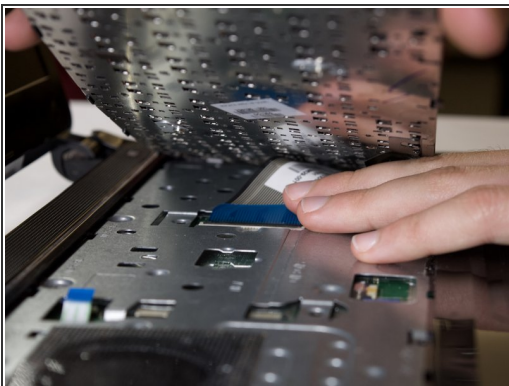
- Remove the two 7mm screws with a Phillips Head #1 Screwdriver.
- ⓘ These screws may not completely come out of the laptop, so just make sure that you have loosened them all of the way.

Step 2



- Starting from the left side, use the metal spudger to pry off the keyboard.
 - Run the spudger across the edges until all plastic clips are popped up and the keyboard is free from the palm rest assembly.
- ⚠ Do not pull the keyboard away from the computer while popping the keyboard off, there is a connector cable in the bottom center of the keyboard that will be disconnected in the next step.

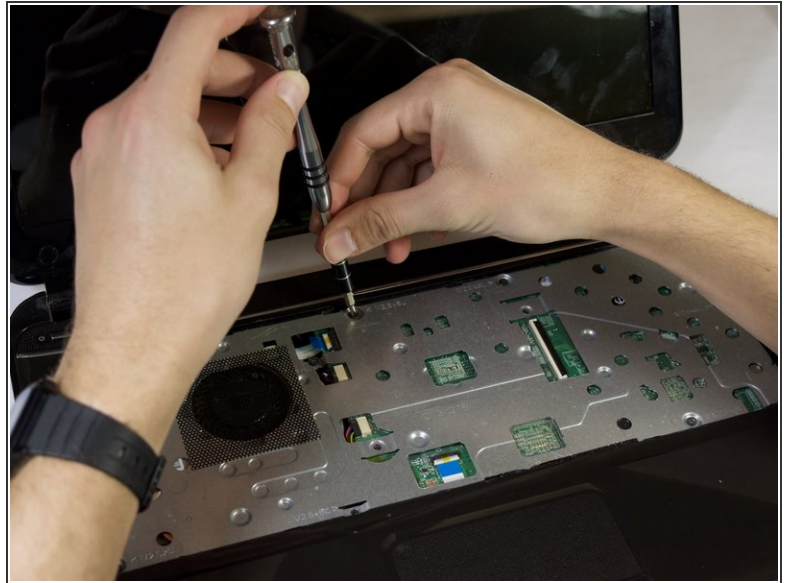
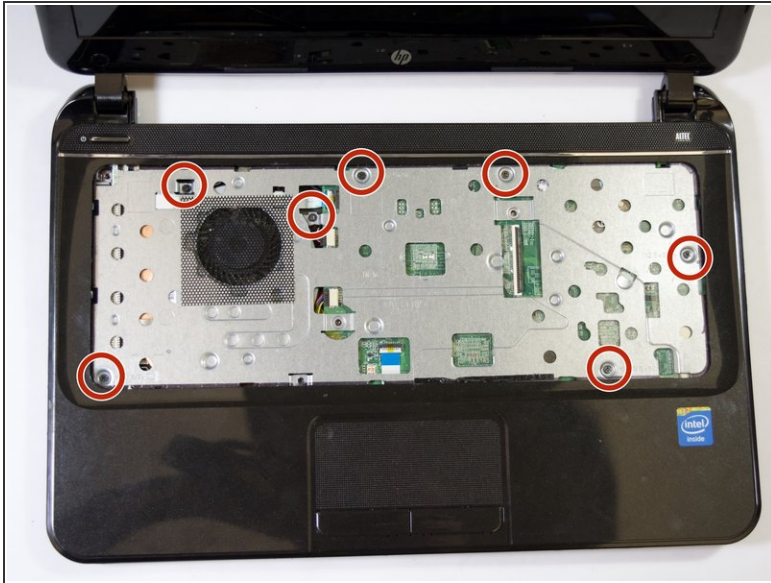
Step 3



- Detach the circuit connector by flipping up the black flap upwards and gently pulling the connector out by pulling up on the blue release tab.
- Lift the keyboard away from the computer once the connector is detached.

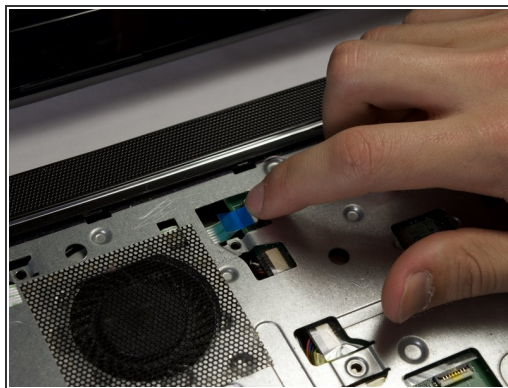
This document was generated on 2019-09-18 08:43:54 AM (MST).

Step 4 — Solid State Hard Drive



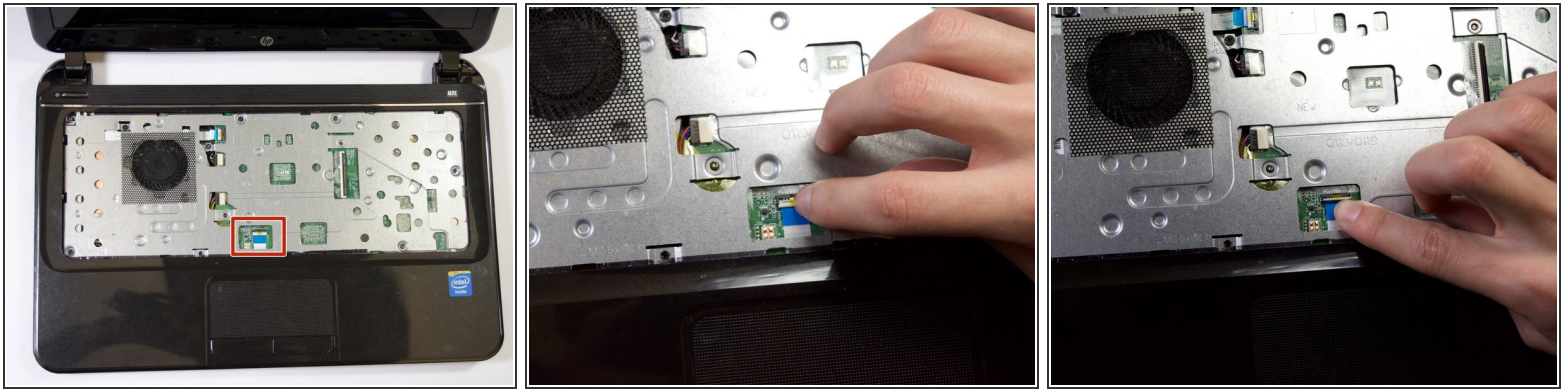
- Locate these seven 5mm circled screws on the panel that was under the keyboard.
- Remove the screws with a Phillips Head #1 Screwdriver.

Step 5



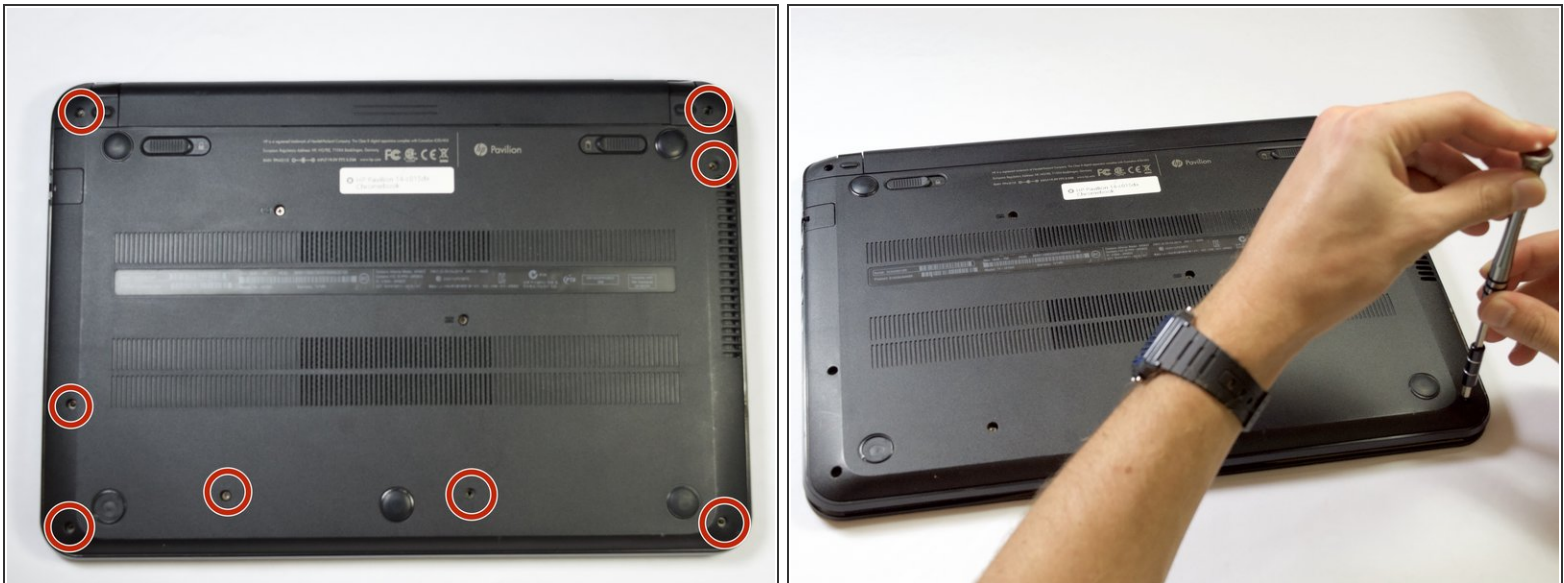
- Locate the ribbon cable near the top of the keyboard area.
- At the cable base, lift the white tab with a fingernail and then gently pull on the blue tab of the cable to release it.

Step 6



- Locate the ribbon cable just above the touchpad.
- Disconnect the cable by lifting the white tab at the base of the cable with a fingernail and then pulling on the blue section of the cable.

Step 7



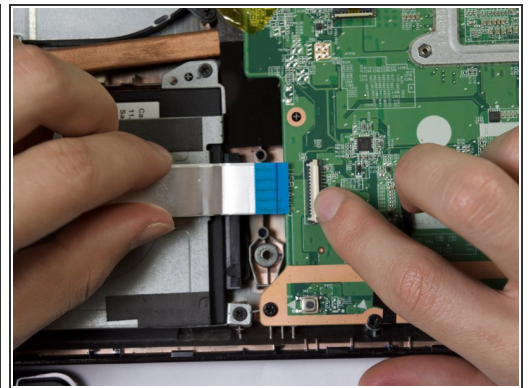
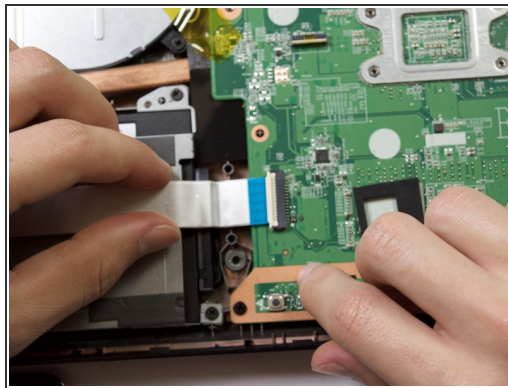
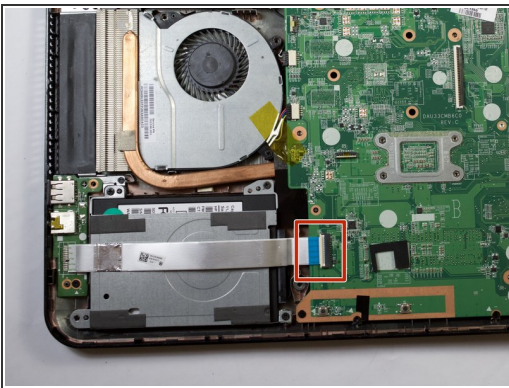
- Locate these eight 7mm screws on the bottom of the laptop.
- Remove using a Philips Head #1 screwdriver.

Step 8



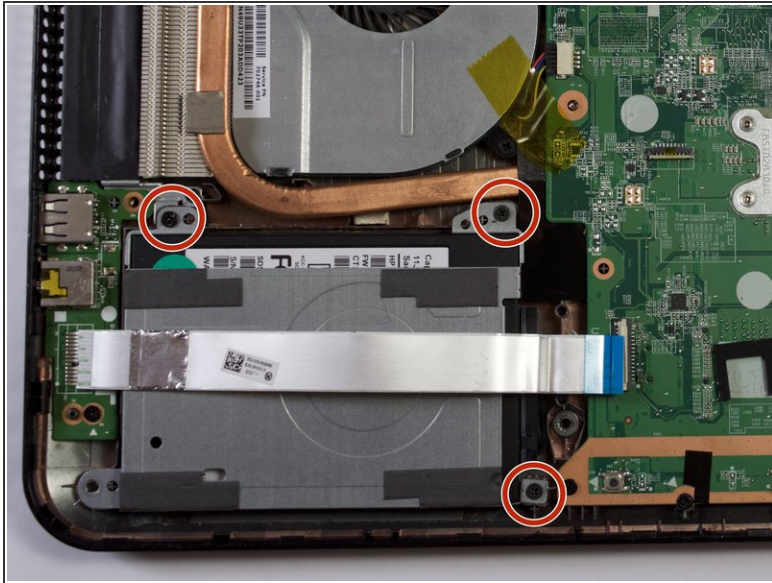
- Flip the computer back over, and using the metal spudger, remove the plastic palm rest assembly.
- Go little by little around the edge and carefully pry off the plastic palm rest assembly.

Step 9



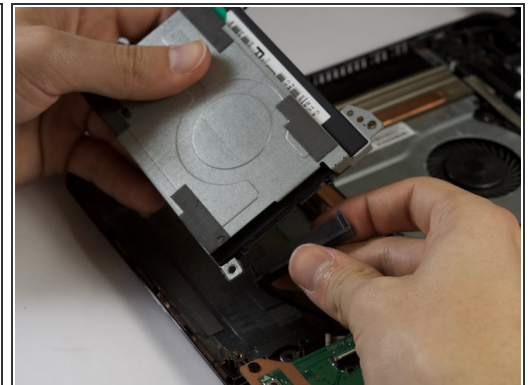
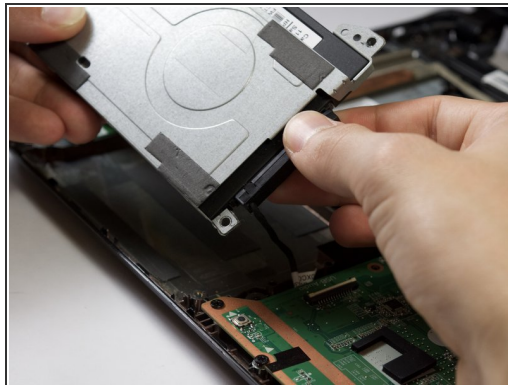
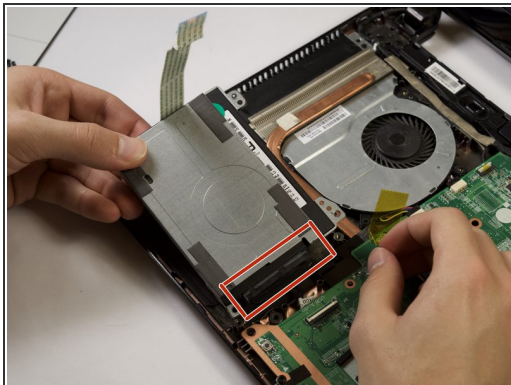
- Locate the plastic flap holding the metal strip in place.
- Disconnect the cable by lifting the white tab at the base of the cable with a fingernail and then gently pulling on the blue section of the cable.

Step 10



- Locate these 3 screws and unscrew using a Philips Head #1 screwdriver.

Step 11



- Lift up the hard drive slightly and remove the black cable strip connecting the hard drive to the computer
- ⚠ Do not lift the hard drive very high, the connector cable is not very long and may get damaged if you pull too far
- ℹ You may need to use some force and wiggling to release it.

To reassemble your device, follow these instructions in reverse order.