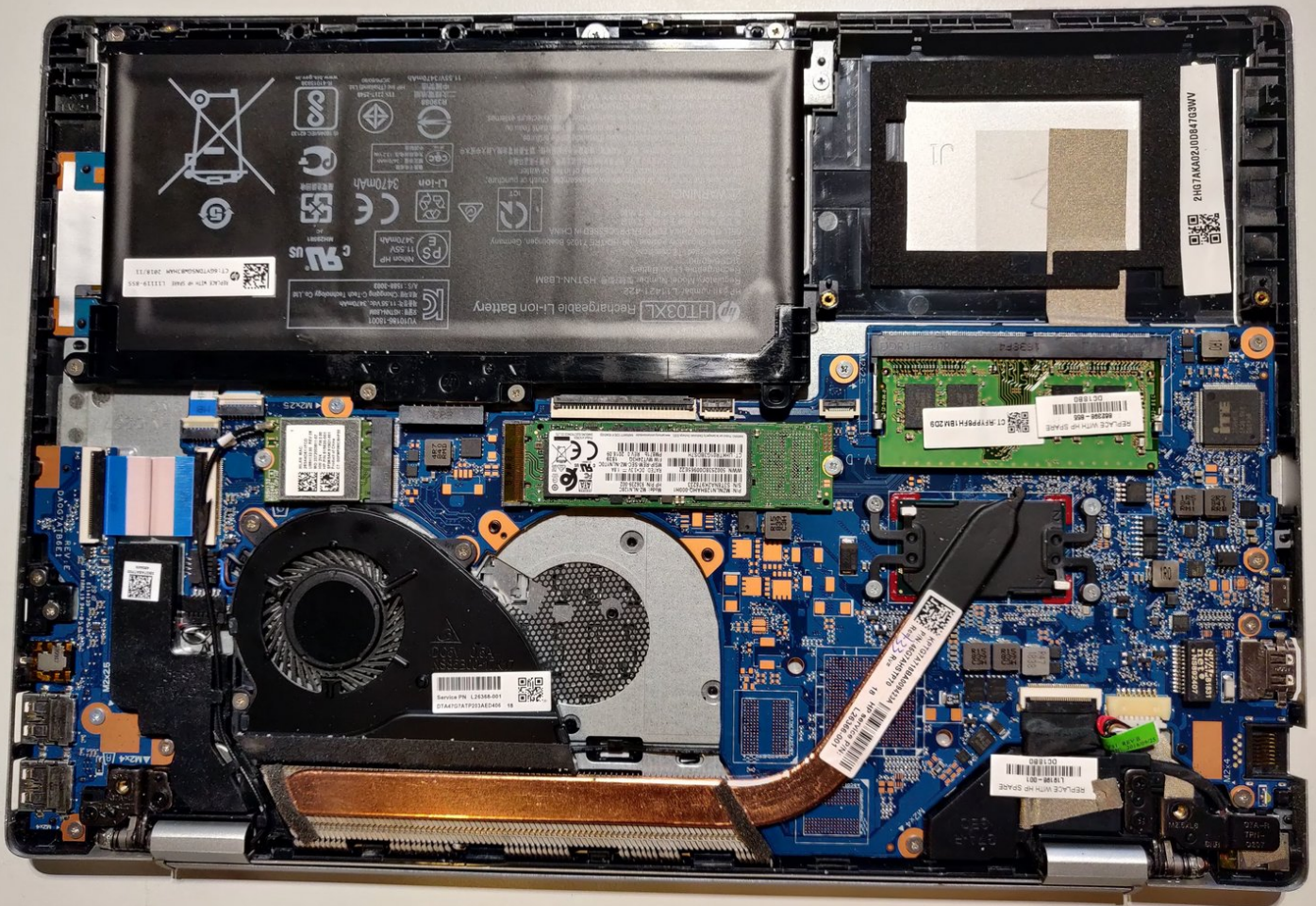




# HP Pavilion 14-ce0000 M.2 Drive Replacement

Replace, upgrade or remove your internal M.2 drive in a HP Pavilion 14-ce0502na (though this guide will also work on other 14-ce0XXX models)

Written By: Light Blair





## TOOLS:

- [Phillips Screwdriver](#) (1)
- [iFixit Opening Tools](#) (1)
- [Flathead Screwdriver](#) (1)

*Only needed if plastic pry tools are not available/not sufficient*



## Step 1 — Unscrewing the visible screws



- Turn the laptop over and unscrew the 3 Phillips Head Screws on the bottom of the laptop.

## Step 2 — Taking out the screws under the rubber feet



- Lift up both rubber feet at the top of the laptop (nearest to the hinge) near the top corner.
- Unscrew the 2 Phillips Head Screws underneath the rubber feet.
- After the screws are taken out, push the rubber feet back where they were originally to make sure the adhesive doesn't get dirty.

### Step 3 — Prying up the top half



- Get a plastic pry tool (recommended) or a small flathead screwdriver (only if pry tools are not available).
- Find a space inbetween the bottom and top section to put your pry tool into.
- From the first section, work your way around the laptop, prying up each plastic tab so it clicks out of place.
- Make sure to be careful around the hinge as the battery is positioned around that area and could be punctured or damaged if you're not careful.
- *If you are using a flathead, make sure to keep the screwdriver relatively vertical as to catch onto the tabs as they can be quite tricky. One trick is to push it straight down and then angle it until it's horizontal, after this the plastic tab should come undone.*



## Step 4 — Taking the top panel off



- Once the top panel is unclipped, it might not come off immediately as there can be tabs that stick.
- Go around the top panel again with your pry tool to make sure any clips have been unclipped.
- Lift up the panel from the side with 3 screws in a hinge fashion, lifting up the panel so it slowly reveals the internals from the battery up.

## Step 5 — Removing the M.2 Drive



- The M.2 Drive is positioned next to the battery and the RAM, in the middle of the laptop.
- To start, use a Phillips Head Screwdriver to unscrew the M.2 Drive from it's bay. The drive will lift up after the screw is removed, from there you can take it out by slowly pulling it, just don't pull it further up.

This document was generated on 2020-04-05 08:35:35 PM (MST).

To reassemble your device, follow these instructions in reverse order (Make sure to click all the tabs back down!).