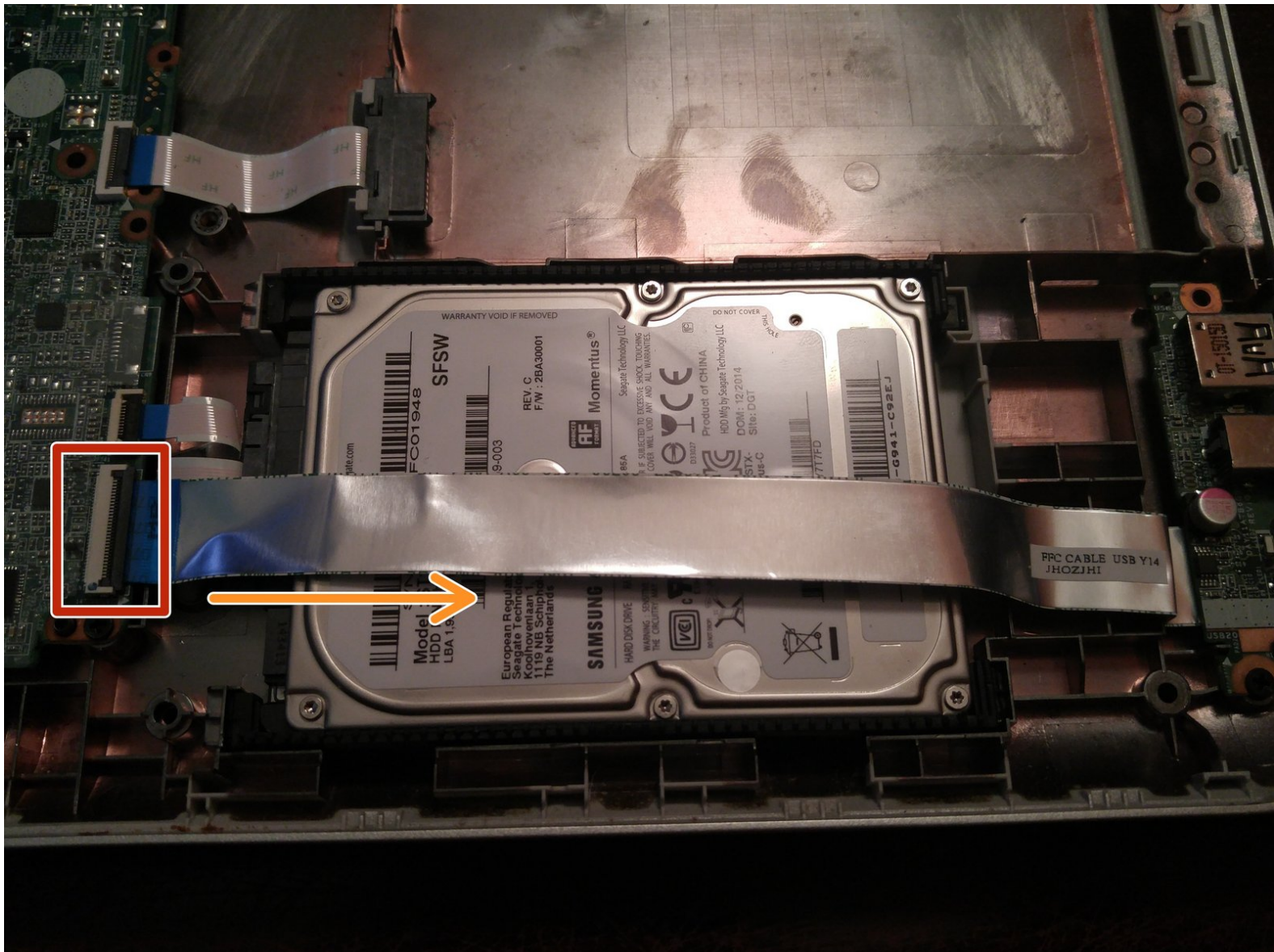




# HP Pavilion 15 P Series Hard Drive Replacement

This guide will show you how to to replace the hard drive in your HP Pavilion P Series laptop.

Written By: Nick



# INTRODUCTION

If the hard drive in your system failed or you just want to replace the drive with a larger drive or an SSD, this guide will show you how to access the hard drive for replacement.

## Guide notes

- **Sort your screws. Multiple lengths are used and there are lot to sort.**
  - **Hard drive replacement is unnecessarily complicated on this laptop and requires partial disassembly.**
  - **If you are unsure you can do this repair, have it done by a professional.**
- **If you are unsure if you can do this repair, read the entire guide before opening the laptop.**
- **This laptop accepts 7mm and 9.5mm drives. Use the 9.5mm bumpers on both drive thicknesses if this is what your system shipped with.**
  - **If your system shipped with a 7mm drive and you are installing a 9.5mm drive, you will need to purchase taller bumpers.**
- **Test the computer partially disassembled BEFORE reassembly.** Complete disassembly is required to correct any issues.



## TOOLS:

- [64 Bit Driver Kit](#) (1)  
*Not required if upgrade kit option is selected.*
- [Magnetic Project Mat](#) (1)  
*Use this to sort the screws as they come out of the system*
- [iFixit Opening Picks set of 6](#) (1)  
*Plastic pry tools work, but may wear out quickly.*



## PARTS:

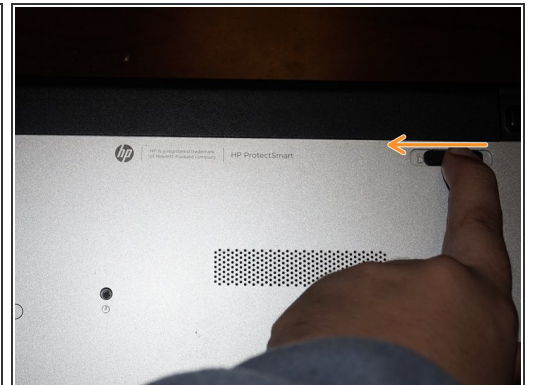
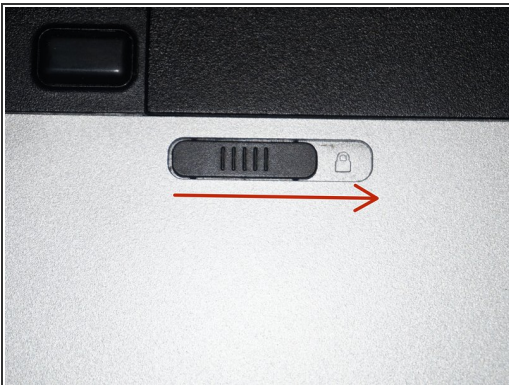
- [500 GB SSD / Upgrade Bundle](#) (1)  
*Part only option is best if you own a Pro Tech Toolkit.*
- [250 GB SSD / Upgrade Bundle](#) (1)  
*Part only option is best if you own a Pro Tech Toolkit.*
- [1 TB SSD / Upgrade Bundle](#) (1)  
*Part only option is best if you own a Pro Tech Toolkit.*
- [2 TB SSD / Upgrade Bundle](#) (1)  
*Part only option is best if you own a Pro Tech Toolkit.*

## Step 1 — Prepare the laptop



- Shut the laptop down until it is hibernated or shut off. ***Do not remove power until both lights turn off.***

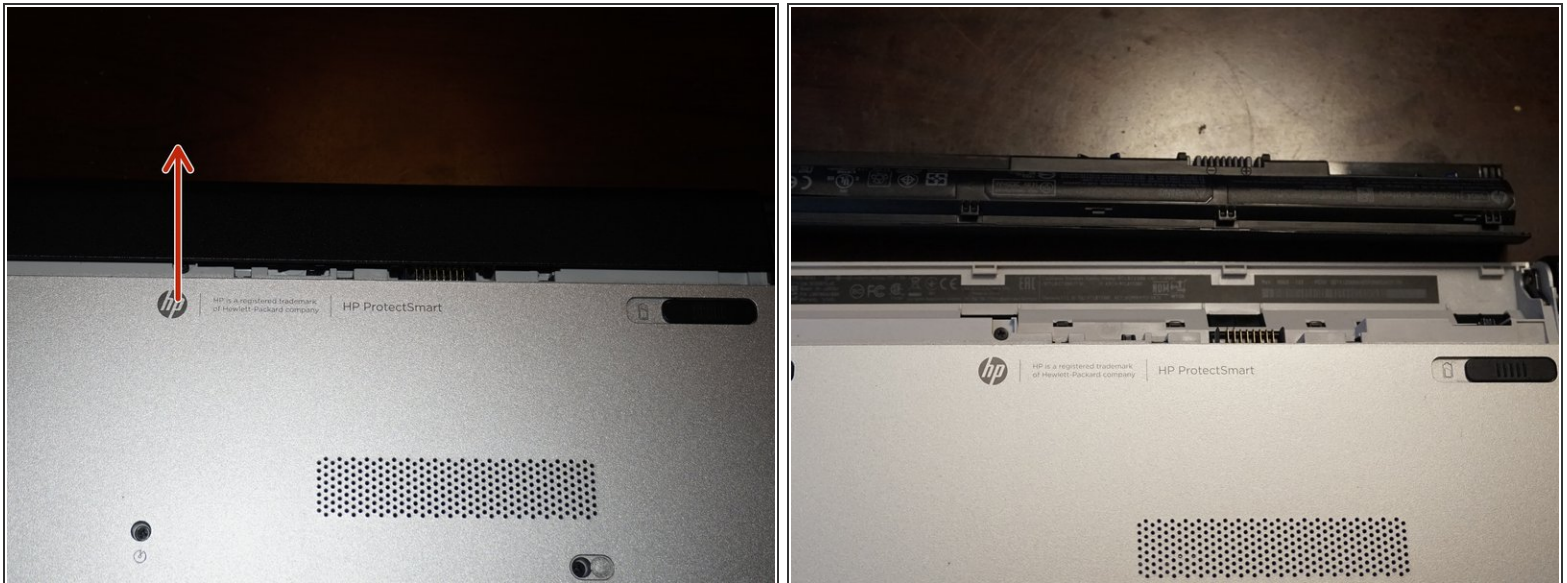
## Step 2 — Unlock the battery



- Once the computer is off, remove the battery. Switch the locking tab to the unlocked position.

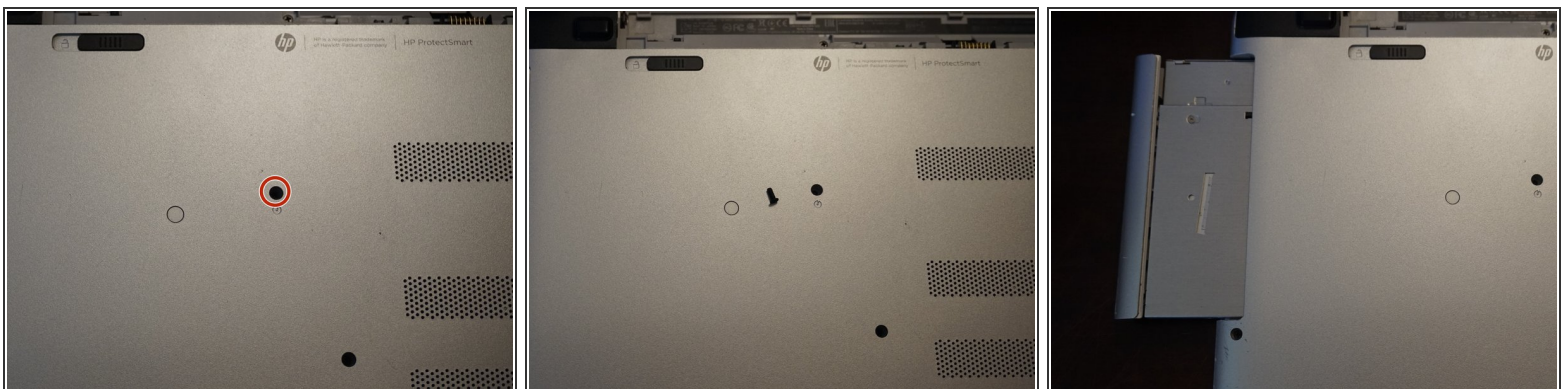


### Step 3 — Remove the battery



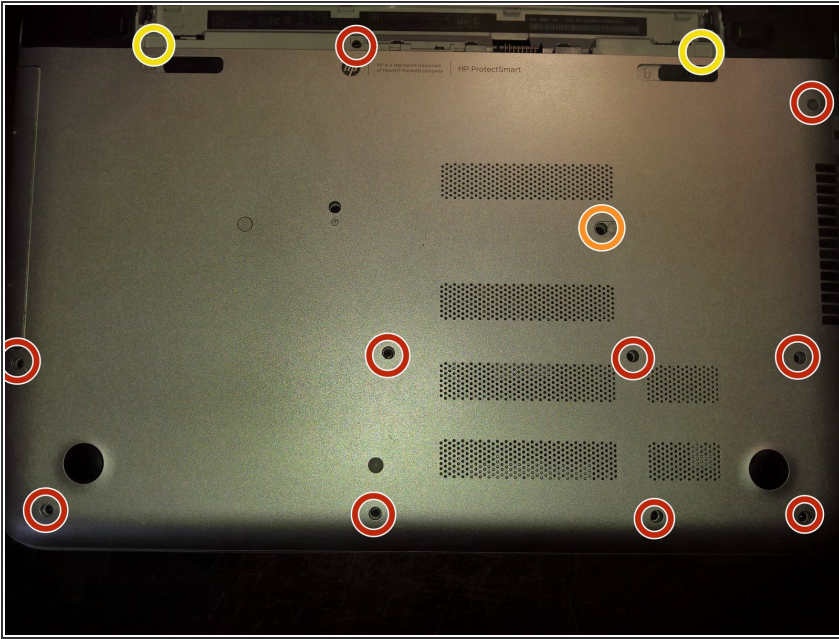
- Remove the battery. Pull the battery forward and remove it from the laptop.

### Step 4 — Remove the optical drive



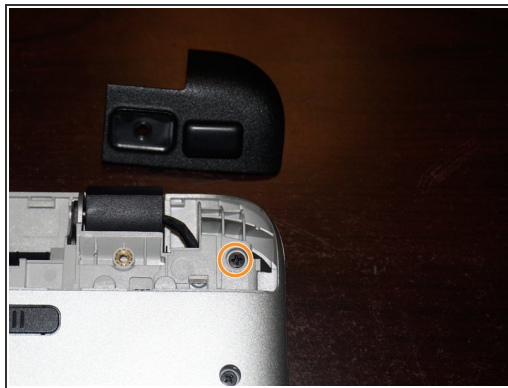
- Remove the screw that holds the optical drive in. To do this, use a **Phillips #0** screwdriver. Slide the optical drive out once the screw is removed.

## Step 5 — Remove the bottom screws



- Once the battery and optical drive are removed, remove the **11** screws that secure the palmrest.
- This screw is hidden by a stick on cover. If lost, this is only cosmetic.
- ***Not found on all models.*** On some models, there are screws in this area. ***If you see screws here, they must be removed.***

## Step 6 — Remove the hinge caps



- ☑ If the original pads are reused, stick them to the hinge caps. This will preserve the adhesive.
- Remove the hinge caps. To do this, remove the rubber pads. Use a **Phillips #0** screwdriver.
- Remove the screws under the hinge caps. To do this, use a **Phillips #0** screwdriver.

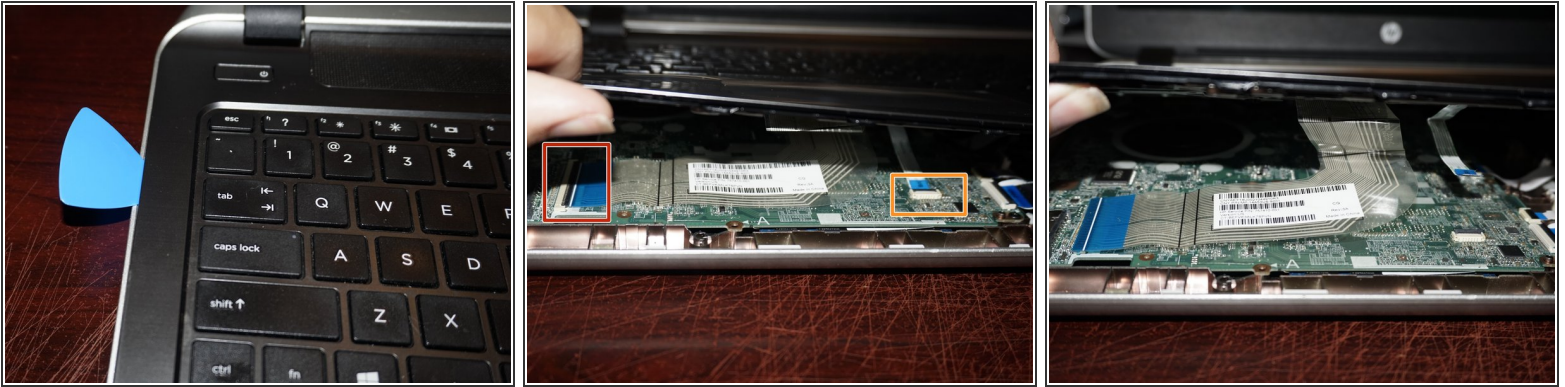
## Step 7 — Remove the screws under the optical drive



- ★ The system used in the guide only came with one screw. If yours came with more than one, sort your screws accordingly.
- With the palmrest screws removed, remove the screws under the optical drive. Use a **Phillips #00 or #000** screwdriver.



## Step 8 — Remove the palmrest

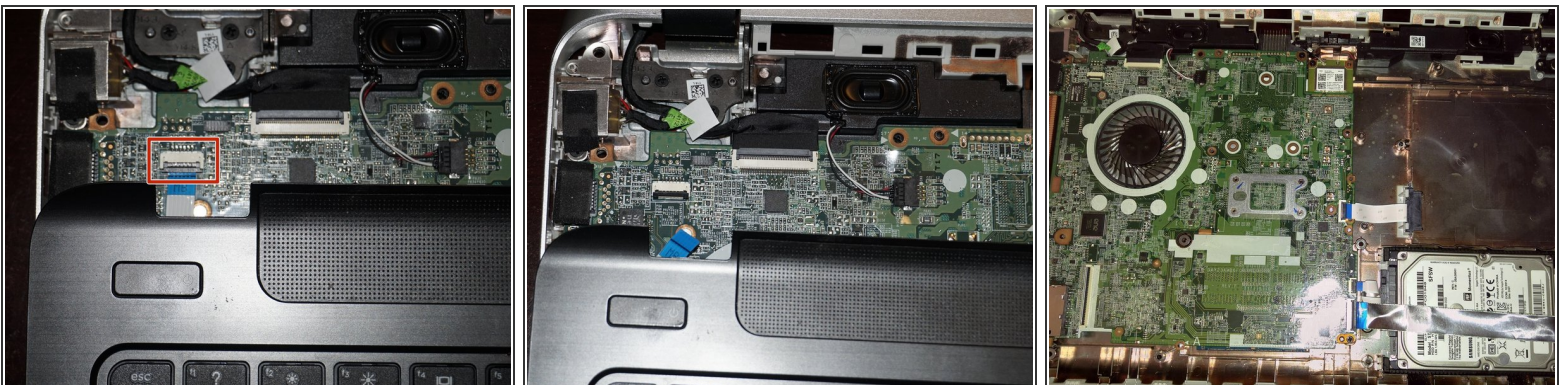


**⚠ Do not remove the palmrest. The power button is still connected and may result in power button or motherboard damage.**

**✦** If you are having trouble removing the palmrest, use a guitar pick to aid disassembly.

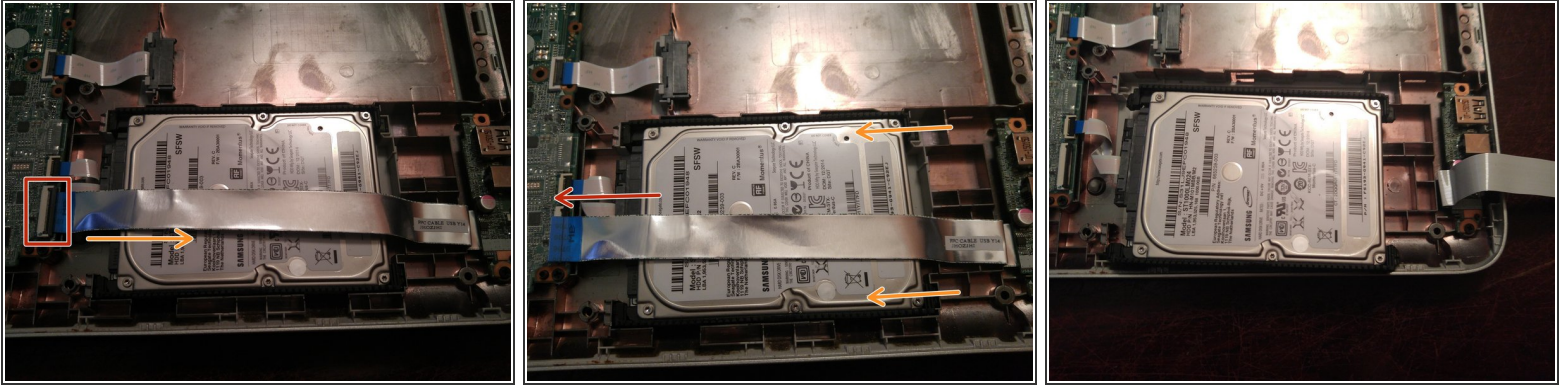
- Use a plastic opening tool to remove the palmrest. Do this for all 3 sides and disconnect the keyboard and trackpad connectors. ***Flip the black plastic tabs on the connectors up and remove the cables.***
- Once the keyboard and trackpad are disconnected, loosen the final part of the palmrest. ***Use a pry tool as an aid if needed.***

## Step 9 — Disconnect the power button



- With the keyboard and trackpad disconnected, lay the palmrest out so the power button flat flex can be accessed. Disconnect it the same way as the keyboard and trackpad.
- Once the power button is disconnected, set the palmrest aside.

## Step 10 — Disconnect the flat flex



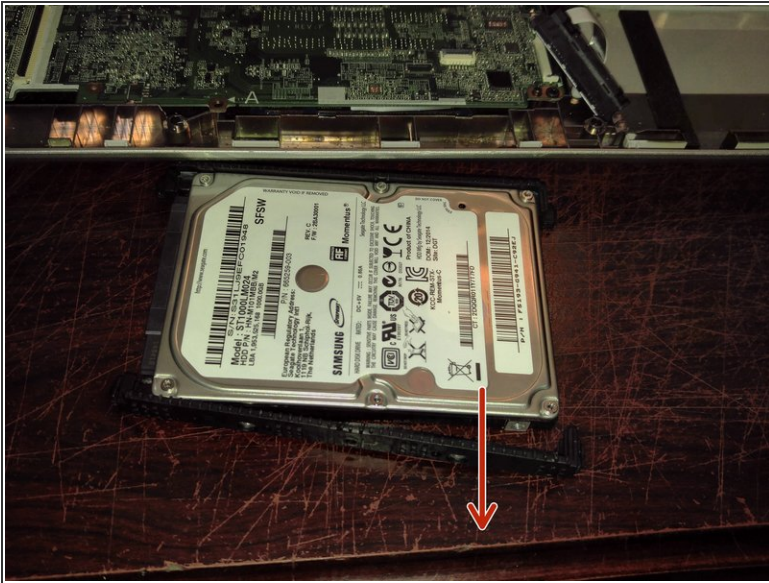
**⚠** *If this guide is used as a prerequisite, the hard drive may not need to be removed.*

**i** *The I/O daughterboard can be removed if it is in the way.*

- Disconnect the flat flex cable over the hard drive. To do this, lift the black locking tab up and remove the cable from the ZIF socket.
- To remove the hard drive, tilt it forward starting with the SATA interface. Once it is removed, set it aside as shown.
- Disconnect the drive cable. Wiggle the cable off until it is released. ***Do not forcefully remove the cable. Unserviced systems may be on tighter than a serviced one.***



## Step 11 — Remove the drive bumpers



- ⚠ If your hard drive has a plastic sticker over the PCB and an SSD is installed, put this in the chassis in case a traditional hard drive is installed later.**
- ⚠ If your drive has a plastic sticker over the drive PCB, this *MUST* be transferred to the new drive.**
- Remove the drive bumpers from the old drive. Transfer these to the new hard drive.

To reassemble your device, follow these instructions in reverse order.

Once tested and reassembled, you will need to reinstall the operating system. This guide does not cover this step.