



# HP Pavilion 15 P Series Motherboard Replacement

If your Pavilion 15 P Series motherboard has failed, this guide will show you how to replace it.

Written By: help



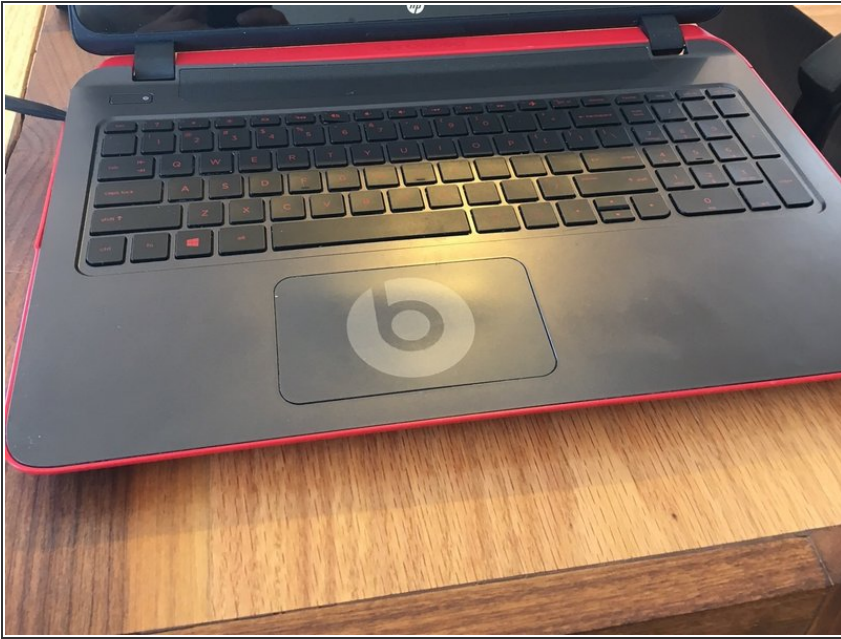


## TOOLS:

- [Spudger](#) (1)
- [Magnetic Project Mat](#) (1)
- [Phillips #0 Screwdriver](#) (1)

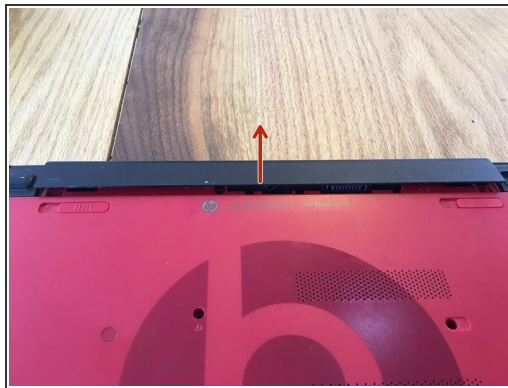
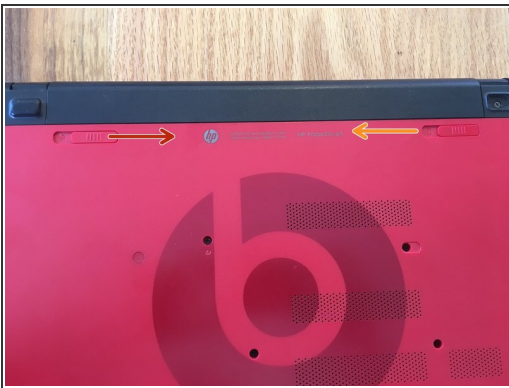


## Step 1 — Shutdown Laptop



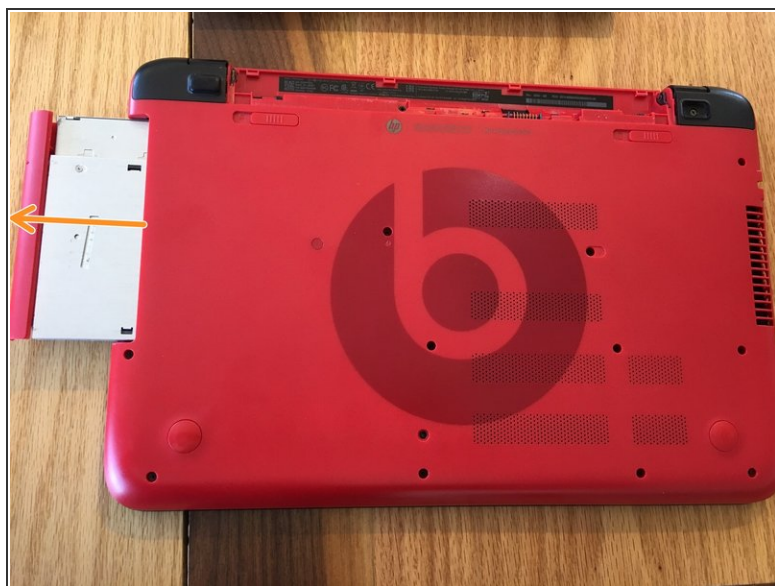
- Before working on the laptop, make sure it is shut down.

## Step 2 — Remove Battery



- Pull the locking tab to the right showing a unlocked symbol.
- Then pull the release tab to the left, releasing the battery.
- Lift the battery out of its connection.

### Step 3 — Remove Optical Drive



- Unscrew the single Phillips #0 screw that holds the optical drive in place.
- Using a spudger push the optical drive out.
- Pull the optical drive completely out and set it to the side.



## Step 4 — Remove the Hinge Caps



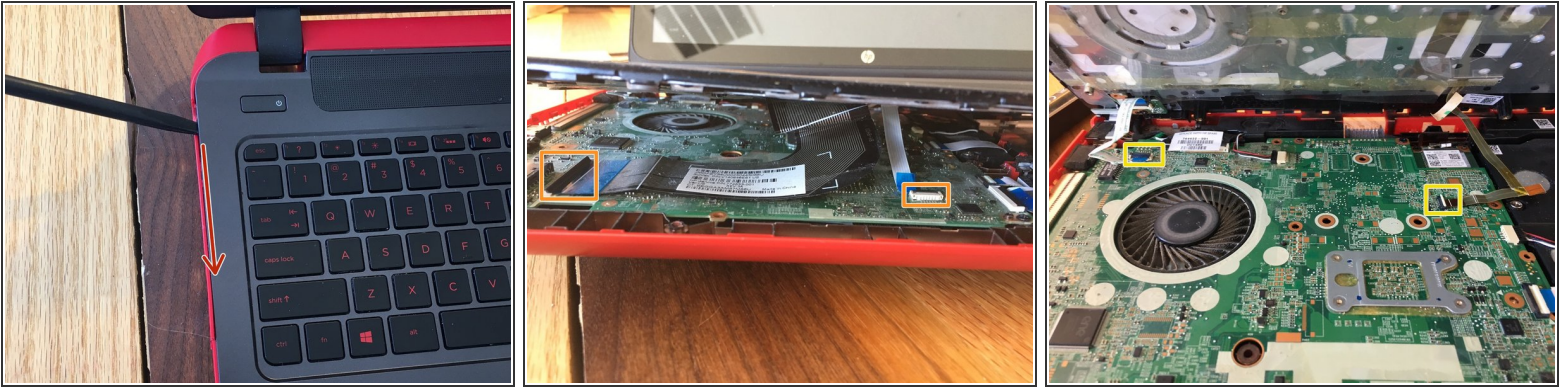
- Using a spudger, pry up the rubber cap.
- Remove the single screw underneath the cap.
- Slightly lift up on the marked section of the hinge cap. Pull away from the computer to release the cap.
- Remove the hinge screw.
- Repeat all steps on the other side.

## Step 5 — Remove Bottom Screws.



- Remove each of the highlighted screws.
- Note, this screw is sometimes covered by a cap.
- Remove the silver pan head screw in the optical drive bay.

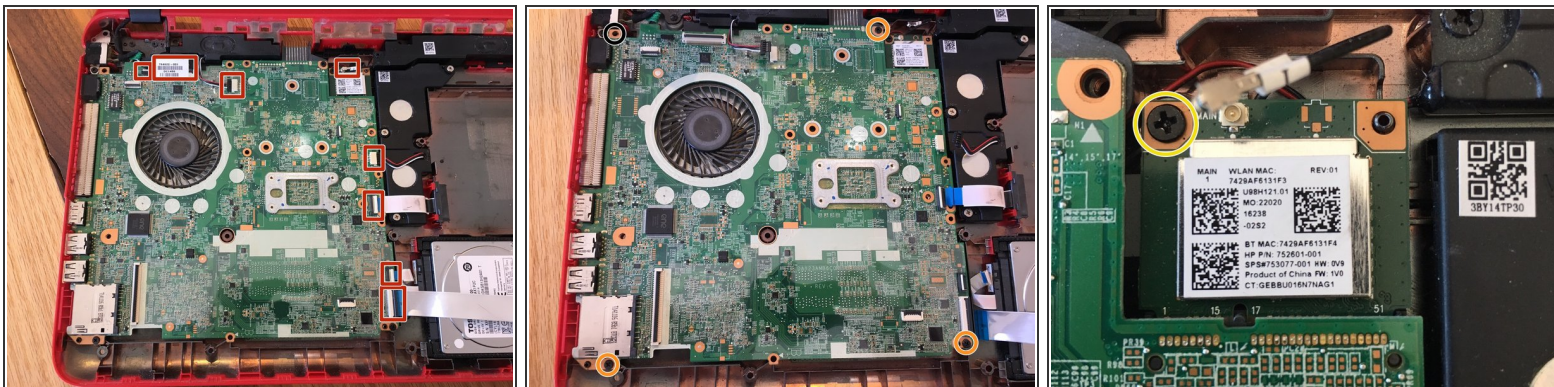
## Step 6 — Remove the Top Case



- Flip your computer back over and open the display. Using a sputter, opening tool, guitar pick, or card pry up on the top case between the frame and itself.
- Follow all the way around the top case gently, until the keyboard is able to be lifted freely.
- NOTE\* Do not lift the keyboard off until the next step in which we pull the ribbon cable connections.
- Using your spudger, or prying tool lift the releases for each ribbon cable. \*Be cautious when removing and handling ribbon cables as they are very fragile.
- Lastly, remove the last two ribbon cables located at the top of the keyboard.

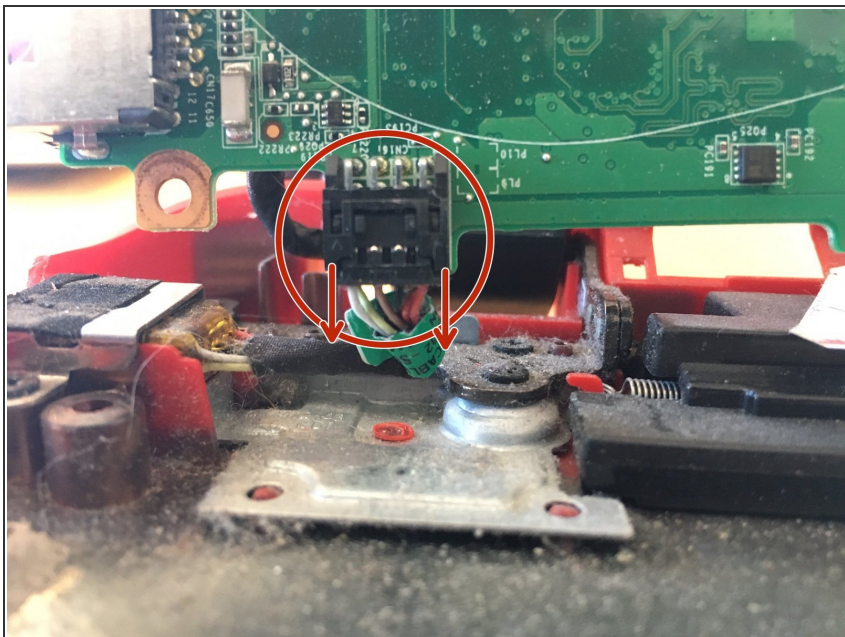


## Step 7 — Removing the Mother Board



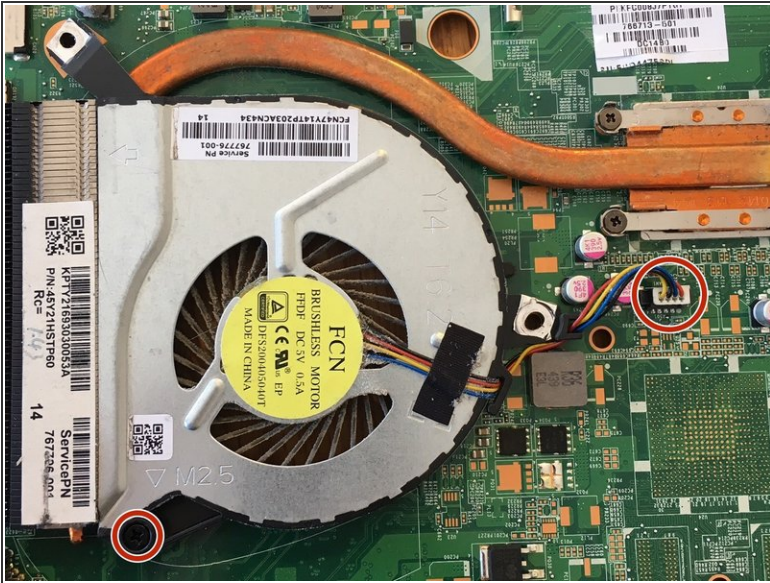
- Remove each cable and connection to the logic board.
- Next, remove the screws holding the motherboard to the bottom case.
- There may be a screw in this area, there was not in the computer I worked on.
- Remove the screw holding the wifi card in place. Pull the wifi card out.

## Step 8 — Finish Removing the Mother Board



- The hardest connection to remove, this is the cable to the AC/DC power port. Remove it by pulling the outside edges of the connector and wiggling gently.

## Step 9 — Transfer the Fan to the New Motherboard



- Remove the fan by disconnecting the white pin connector and then removing the only Phillips screw holding the fan in place.
- Now you're ready to put the new logic board in!

To reassemble your device, follow these instructions in reverse order.