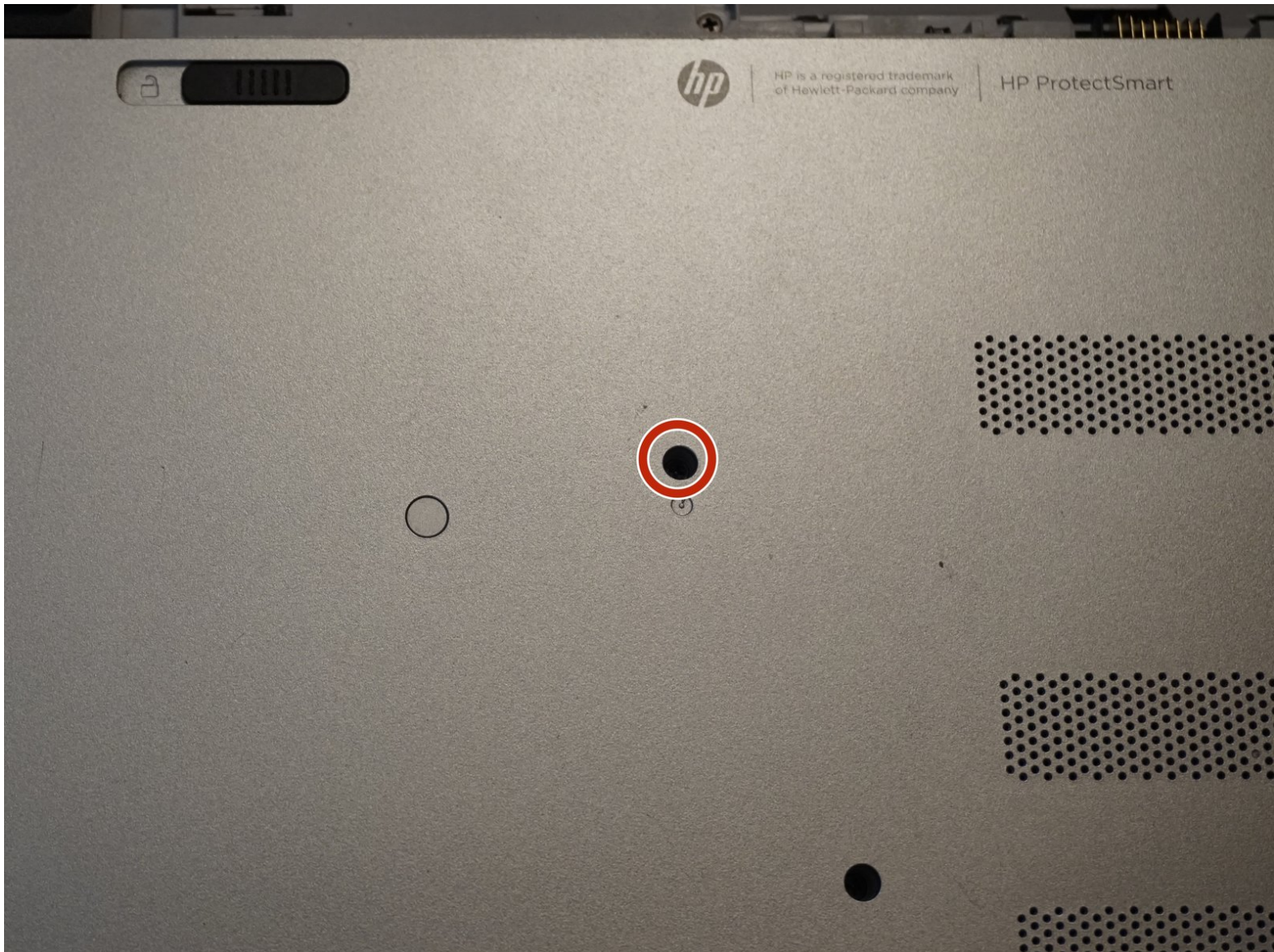




HP Pavilion 15 P Series Optical drive Replacement

If your optical drive has failed, this guide will show you how to replace it.

Written By: Nick



INTRODUCTION

If the optical drive in your HP Pavilion 15 has failed or you do not need it (and want to install a blank or hard drive optical drive caddy), this guide will show you how to remove the optical drive, screw bracket and faceplate.

Guide notes

- The replacement component must be 9.5mm. **This system does not accept 12.7mm optical drives.**
- The optical drive must use SATA. **This system does not accept IDE optical drives.**



TOOLS:

- [64 Bit Driver Kit](#) (1)



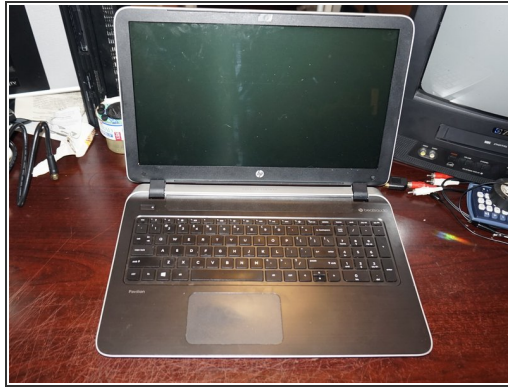
PARTS:

- [SATA optical drive](#) (1)

9.5mm

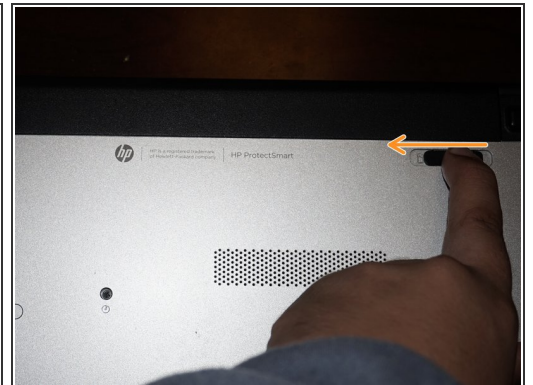
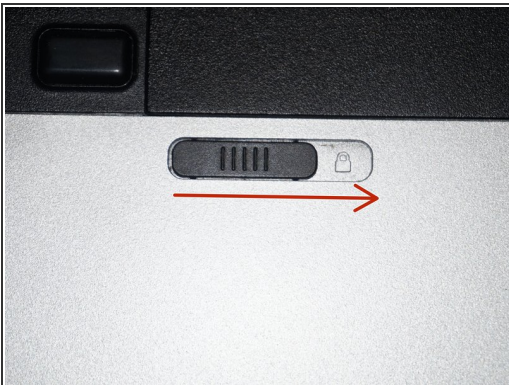
*Any SATA drive should work. HP Spare:
700577-6C2*

Step 1 — Prepare the laptop



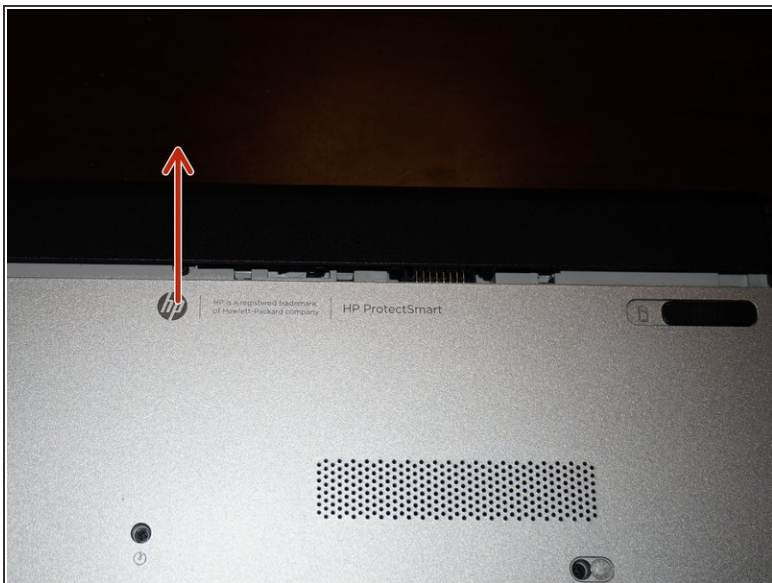
- Shut the laptop down until it is hibernated or shut off. ***Do not remove power until both lights turn off.***

Step 2 — Unlock the battery



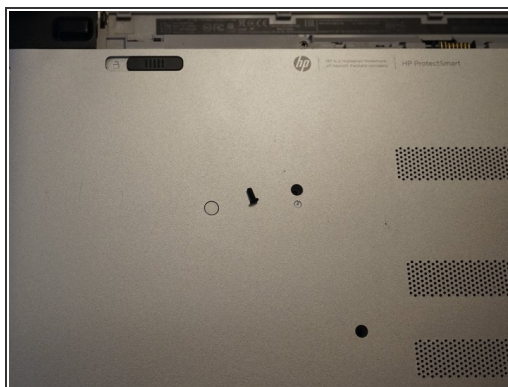
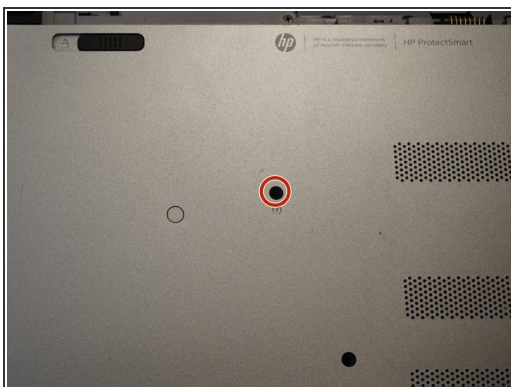
- Once the computer is off, remove the battery. Switch the locking tab to the unlocked position.

Step 3 — Remove the battery



- Remove the battery. Pull the battery forward and remove it from the laptop.

Step 4 — Remove the screw



- Remove the screw that holds the optical drive in. To do this, use a **Phillips #0** screwdriver. Slide the optical drive out once this screw is removed.

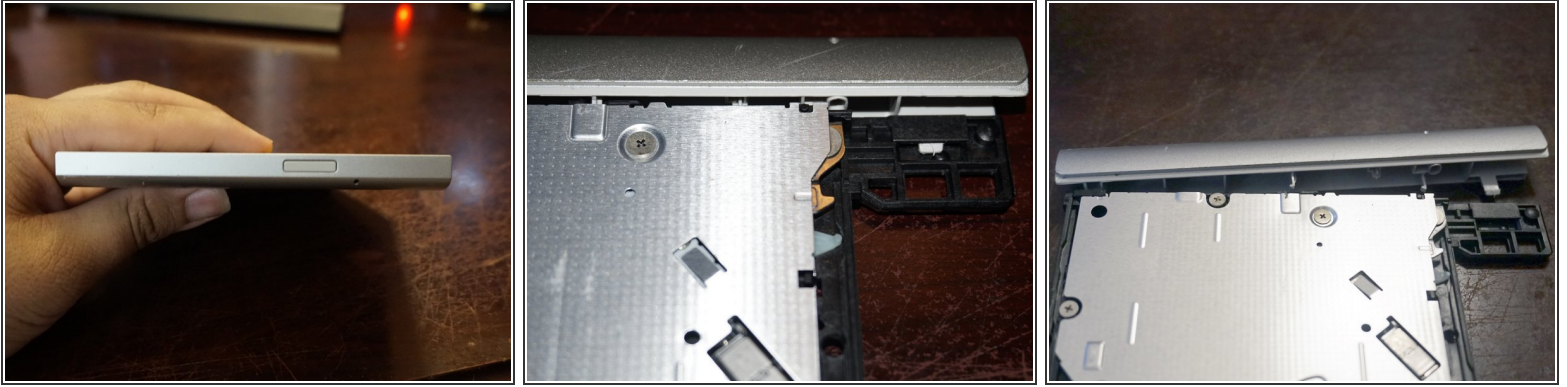
Step 5 — Remove the optical drive tab



⚠ If you are seeing this in a guide where the optical drive is not being replaced, it is being used as a prerequisite. This bracket does not have to be removed if the optical drive is not being replaced.

- Remove the screw that holds the optical drive in. To do this, use a **Phillips #0** screwdriver. Slide the optical drive out once this screw is removed.

Step 6 — Faceplate removal



⚠ If you are seeing this in a guide where the optical drive is not being replaced, it is being used as a prerequisite. This bracket does not have to be removed if the optical drive is not being replaced.

⚠ Be careful not to break any clips. The faceplate still work, but will always be loose if this happens.

- To remove the faceplate, open the optical drive with a paper clip. Once the tray is released, push the clip marked in orange with a paperclip or flathead screwdriver. Once this clip is loose, the faceplate should freely come off on the left.

To reassemble your device, follow these instructions in reverse order.