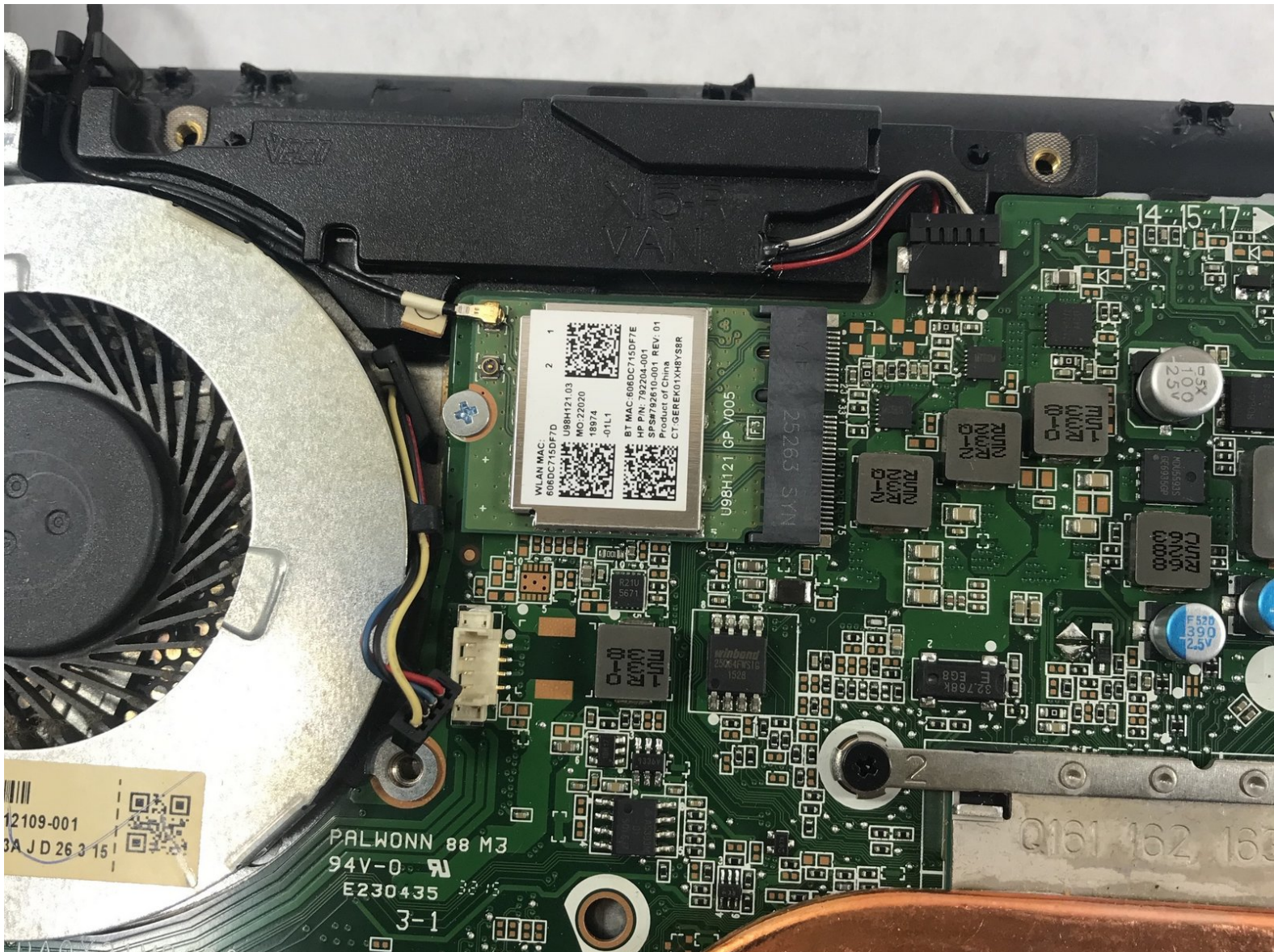




HP Pavilion 15-AB153NR WiFi Card Replacement

This guide will teach you to remove and replace the WiFi Card in your HP Pavilion 15-AB153NR.

Written By: Nicole Vachon



INTRODUCTION

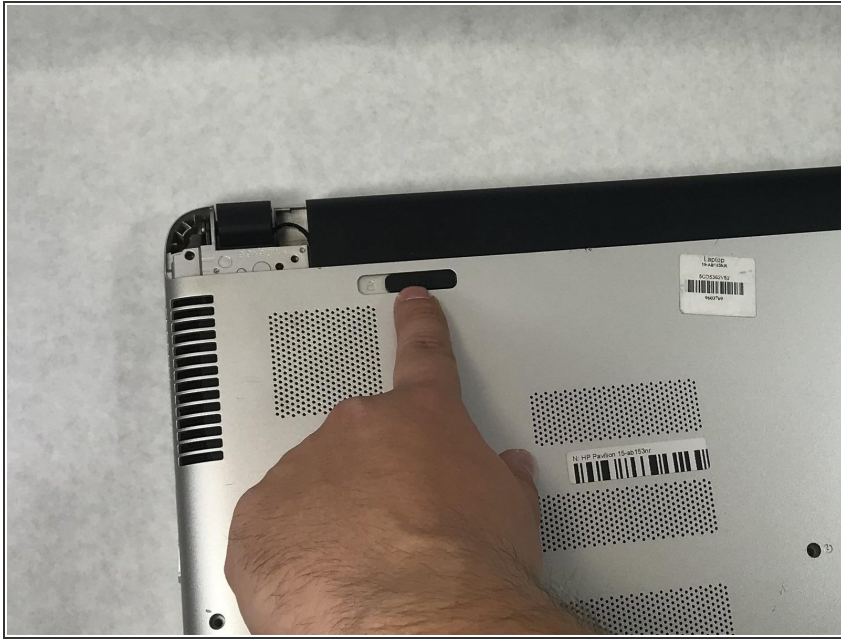
This replacement will require the use of prying tools and screwdrivers. It can be completed with moderate difficulty. Make sure you have a moderate chunk of time to complete this task. You will need a clear work surface. Replacing the WiFi card can often solve problems such as connecting to wireless complications.



TOOLS:

- [Phillips #000 Screwdriver](#) (1)
 - [Phillips #1 Screwdriver](#) (1)
 - [Phillips #0 Screwdriver](#) (1)
 - [iFixit Opening Tools](#) (1)
-

Step 1 — Battery



- ❗ Ensure computer is turned off and unplugged.
- Slide the battery lock latch on the left to unlock. Slide from left to right to unlock.

Step 2



- Slide the battery release latch on the right with continuous force from right to left.
- Once battery pops, you may release latch.


Step 3



- Grab the battery, rotating upwards and away from you. This will remove the battery.

Step 4 — CD/DVD Drive



 Make sure computer is powered off and unplugged.

- Flip computer over so that the bottom is facing the ceiling and the hinges are farthest from you.

Step 5



- Using the Phillips #000 screwdriver, remove the 7 mm screw on the middle right.

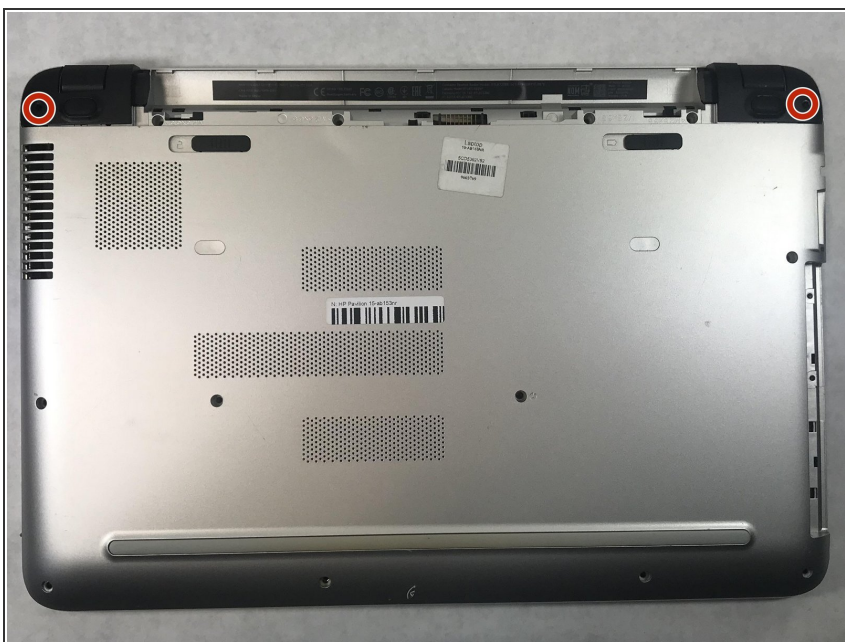
ⓘ There is an icon that looks like a CD stamped into the back panel near this screw.

Step 6



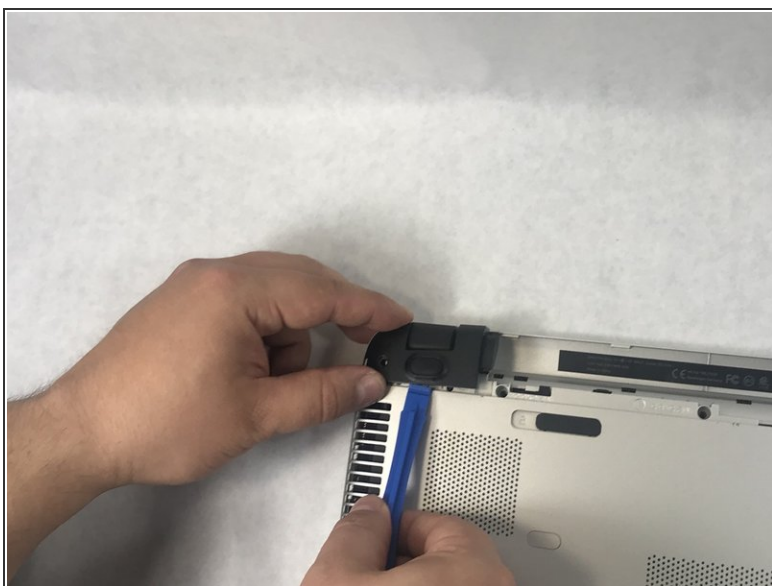
- Slide the drive out from the right side of the device.

Step 7 — Bottom Case Cover



- Using the Phillips #1 screwdriver, remove the two 12mm screws located on the hinge covers.

Step 8



- Lift the corner covers off of the computer using a prying tool.

Step 9



- Remove the six 6.5mm screws using a Phillips #1 screwdriver that are located near the top of the laptop.

Step 10



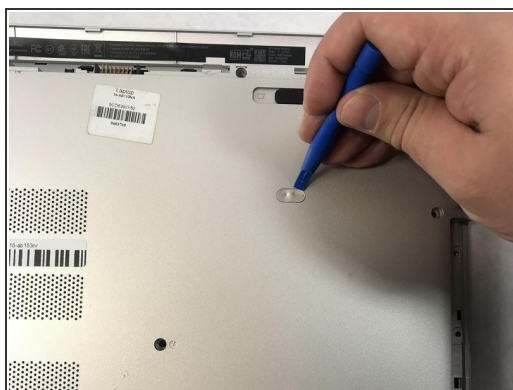
- Remove the remaining seven 6.5mm screws using a Phillips #1 screwdriver that are securing the back cover.

Step 11



- Use the Phillips #0 screwdriver to remove the two 2mm screws.


Step 12



- Use prying tools to pry the covers off of the screwholes.
- Using the Phillips #1 screwdriver, remove the two 6.5mm screws.

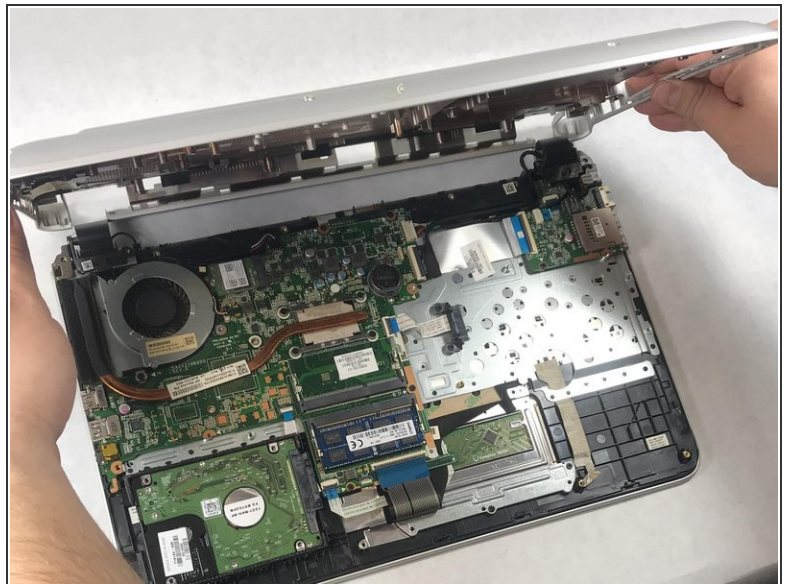
Step 13



 Be mindful of sharp edges on computer while using prying tools.

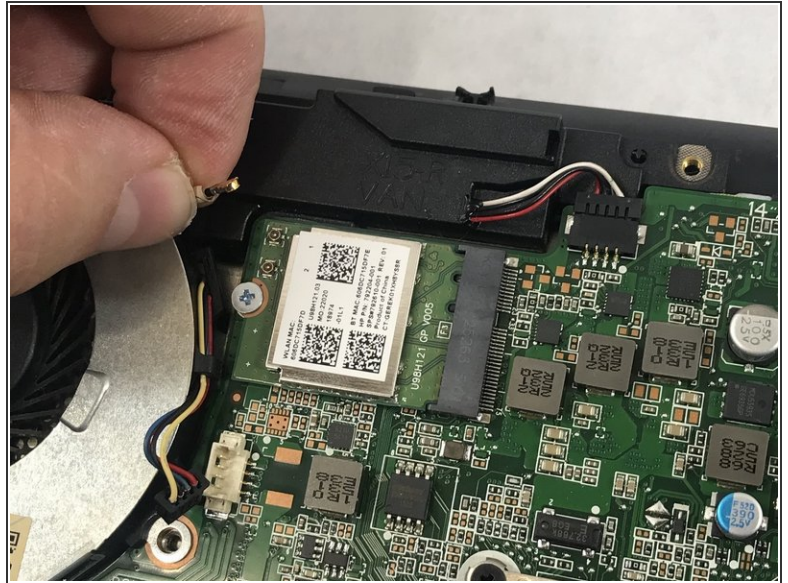
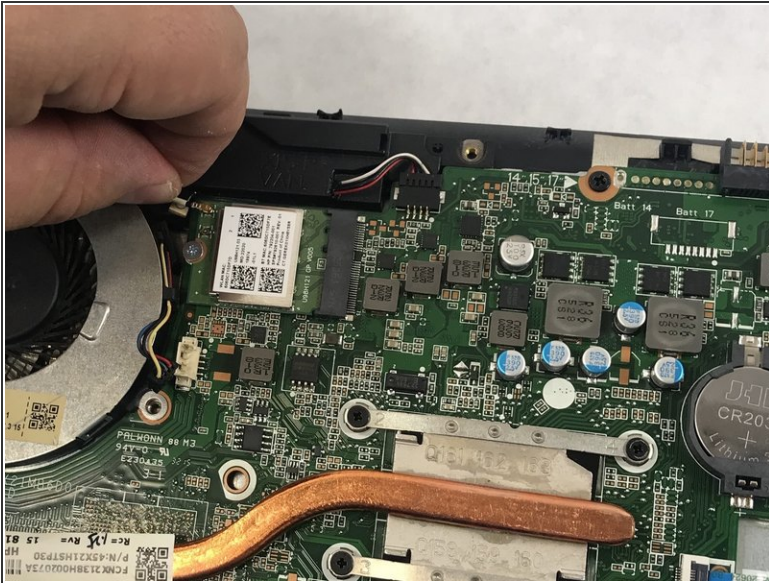
- Flip computer over and open so that the screen is facing you.
- Starting at the bottom right corner, insert the prying tool and lift upwards to loosen the back panel.
- Continue down all sides and corners of the device.

Step 14



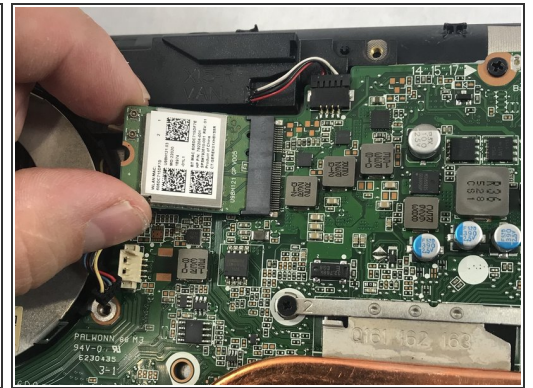
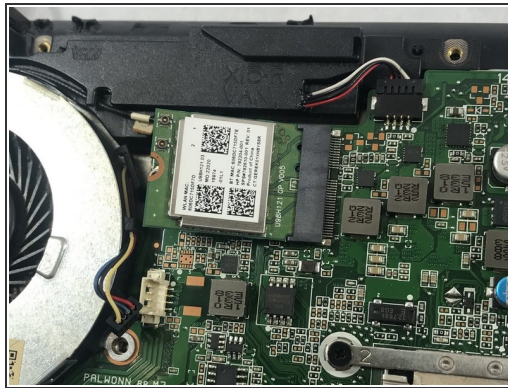
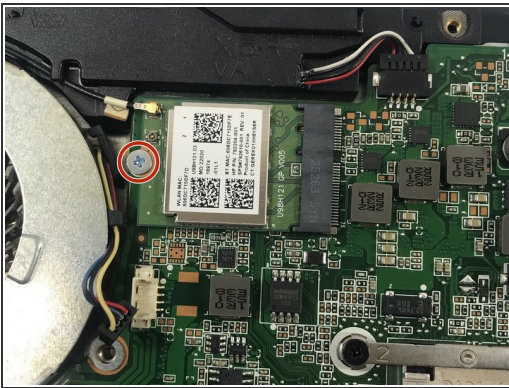
- Flip laptop back over so that the bottom is facing up
- After all sides are loosened, remove the back panel from the device.

Step 15 — WiFi Card



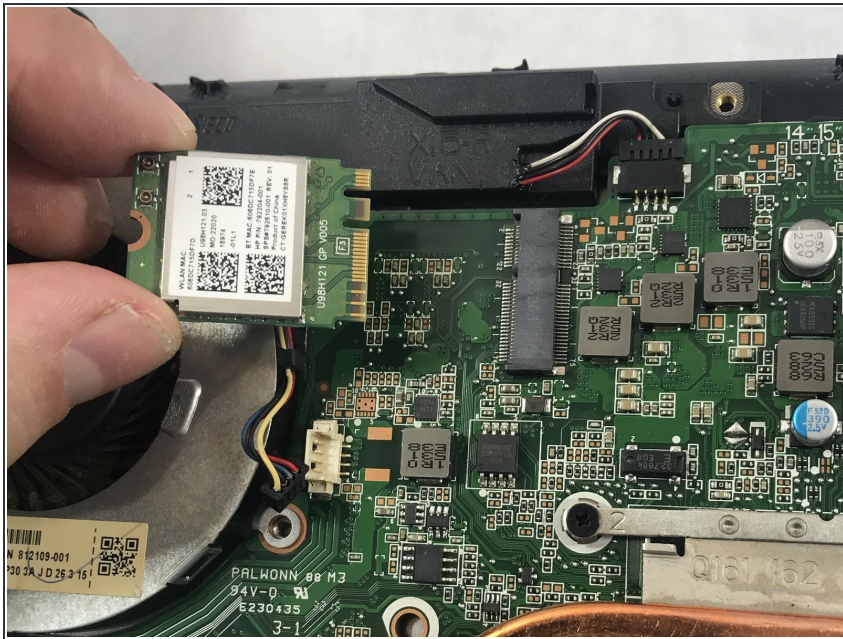
- Disconnect the antenna cable from the terminals on the card.

Step 16



- Using Phillips #0 screwdriver, remove the 3mm screw that connects the card to the motherboard.
- ⓘ The Wi-Fi card should pop up after screw is removed.
- Use sliding motion to disconnect other side.

Step 17



- To remove the card, pull it away from the slot at an angle.

To reassemble your device, follow these instructions in reverse order.