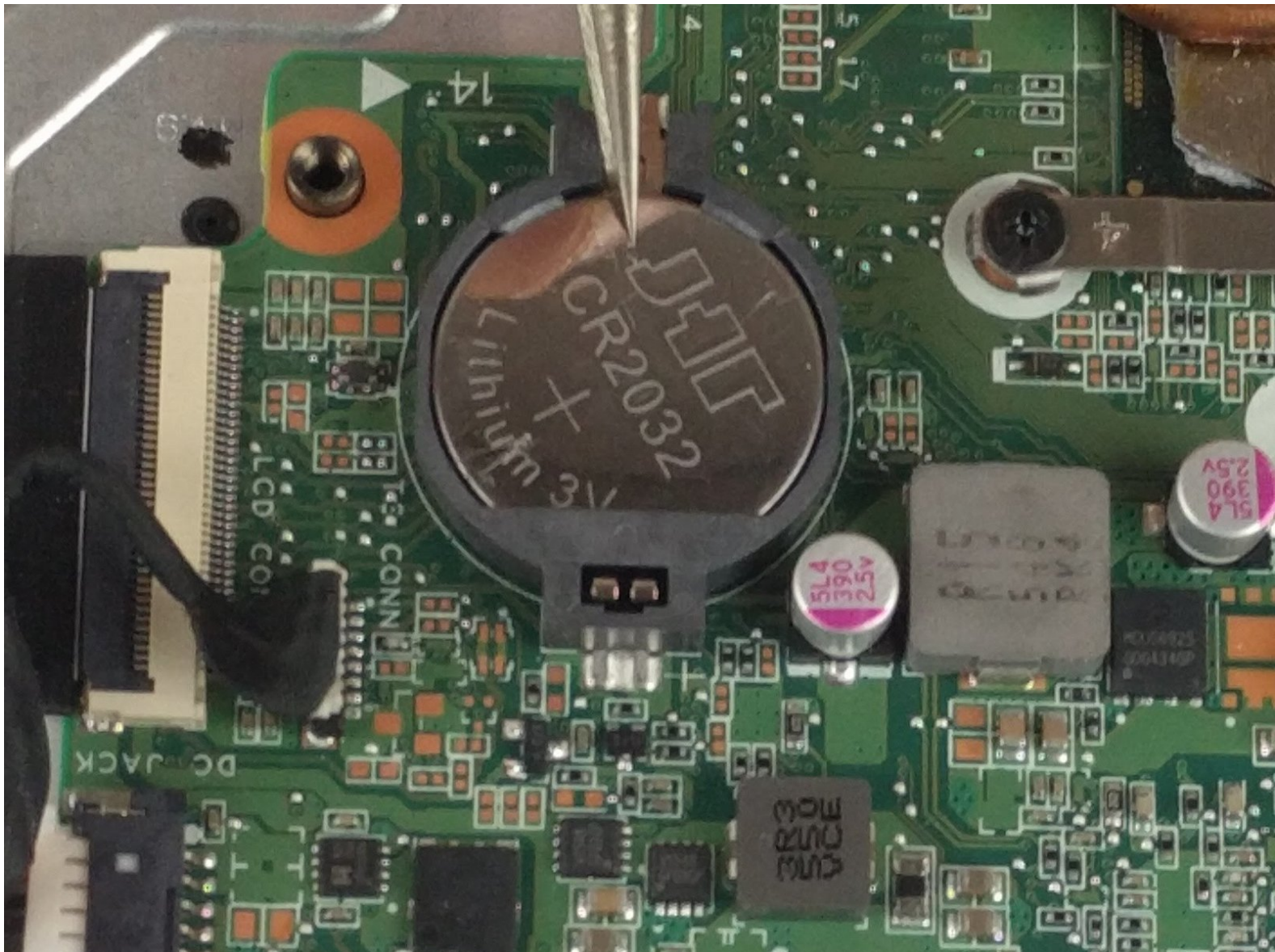




HP Pavilion 15-ab243cl CMOS Battery Replacement

replacing the CMOS battery, also known as clock battery

Written By: Alexander Bicigo



INTRODUCTION

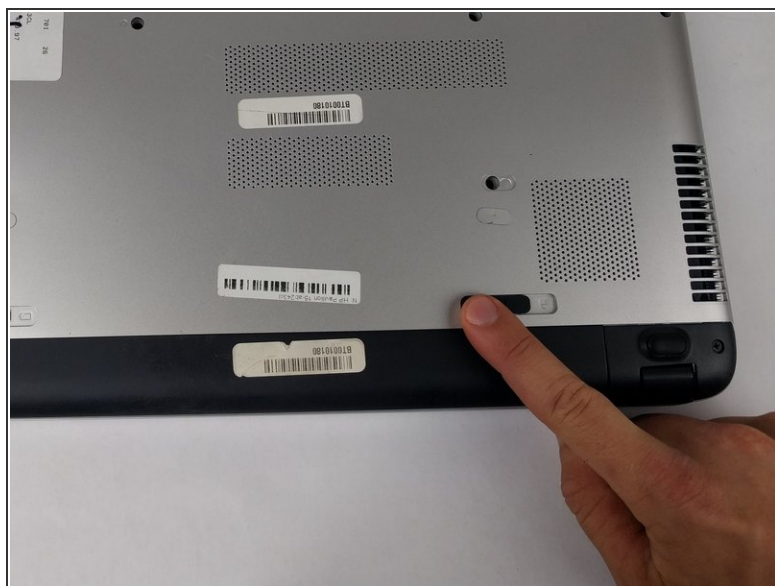
The CMOS Battery is responsible for keeping your time clock correct on the device, even after the main battery runs out of juice. If you are experiencing issues with your time clock resetting, then this guide will help you replace the battery.



TOOLS:

- [Phillips #1 Screwdriver](#) (1)
 - [Phillips #00 Screwdriver](#) (1)
 - [Prying and Opening Tool Assortment](#) (1)
 - [Tweezers](#) (1)
-

Step 1 — Battery



- Slide the battery lock tab toward the center of the battery to the unlock position.

Step 2



- Slide the battery release switch to the right until the battery pops out.

Step 3



- Grabbing the top edge of the battery, rotate it toward you and then lift upward to relieve the battery from its slot.

Step 4 — Laptop Case



- With the battery removed, remove both black plastic covers with a plastic opening tool. Unscrew both 7.5 mm screws from the tabs, using a PH1 screw driver. Using a plastic opening tool, pry off both covers.

Step 5



- Remove all 16 of the 3.5 mm screws with a PH1 screwdriver and pry/slide the CD drive out of laptop.

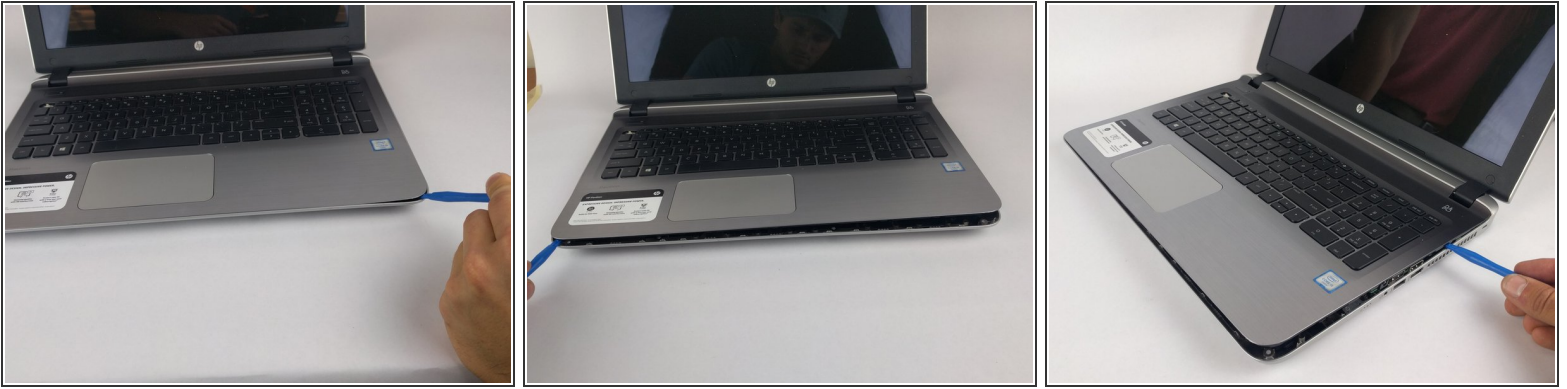
Step 6



- With the CD drive removed, unscrew the two 2mm silver screws with a PH00.

⚠ These can strip easily, so take your time removing.

Step 7



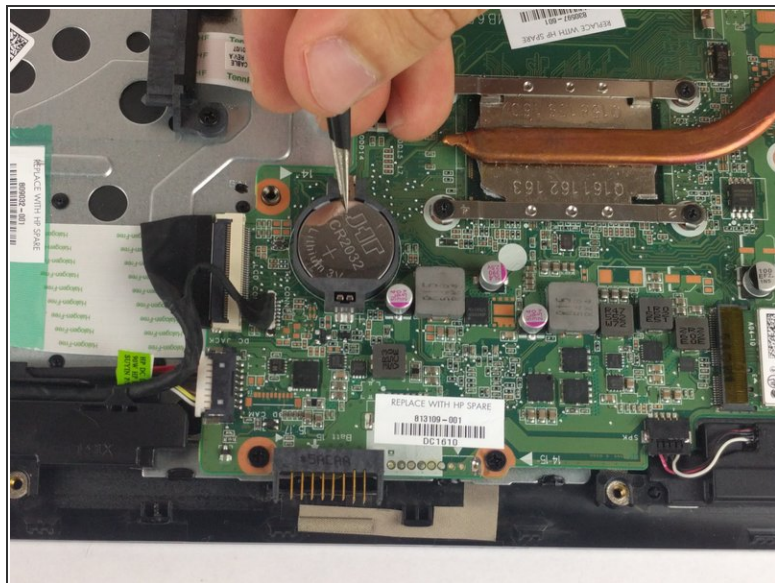
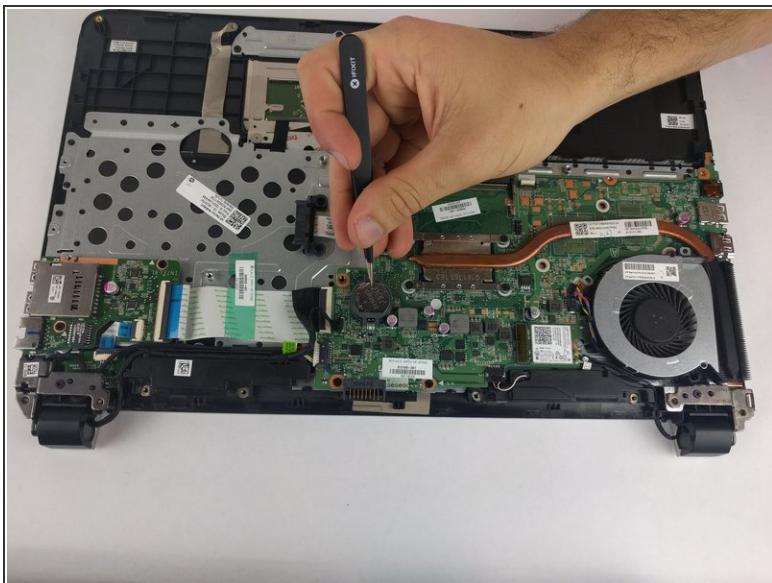
- Using a plastic opening tool, begin to pry edge of case away from the laptop. Work around the edges until all sides, except back, are open.

Step 8



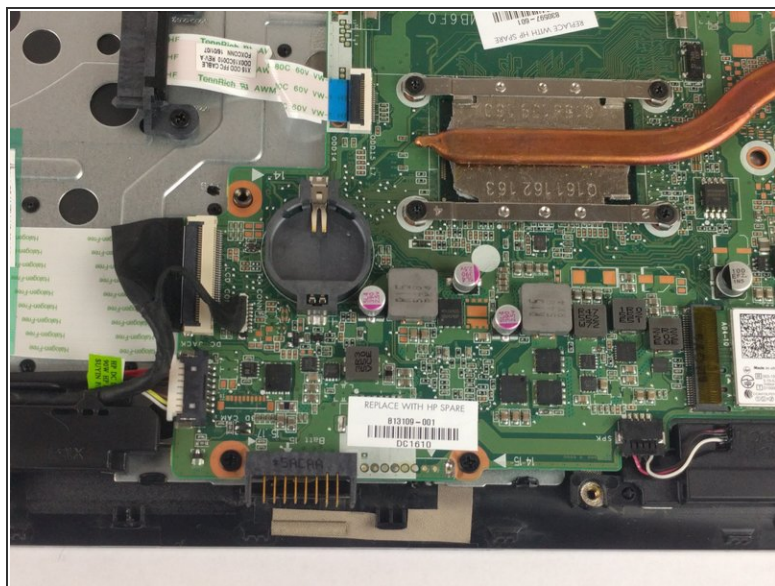
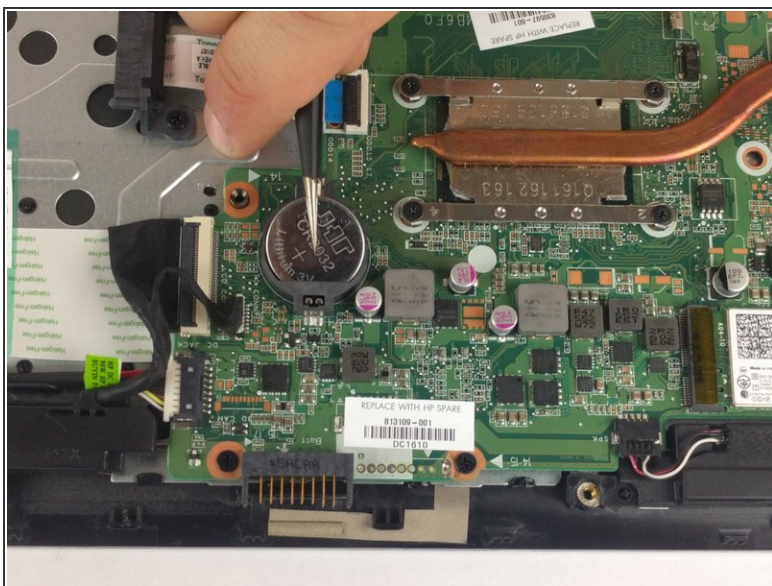
- On the back side of the laptop, where the battery is, there are 12 black plastic clips. Use a plastic opening tool and pry all of these clips, unlatching them from the case.
- Once clips are free, open the laptop. Rotating the case off, around the hinges, works best to remove the case.

Step 9 — CMOS Battery



- Use long nose tweezers to reach under battery and lift up.

Step 10



- Lift up until battery pops out, remove battery

To reassemble your device, follow these instructions in reverse order.