



# HP Pavilion 15-ab243cl Cooling Fan Replacement

Removeing the cooling fan

Written By: Alexander Bicigo



## INTRODUCTION

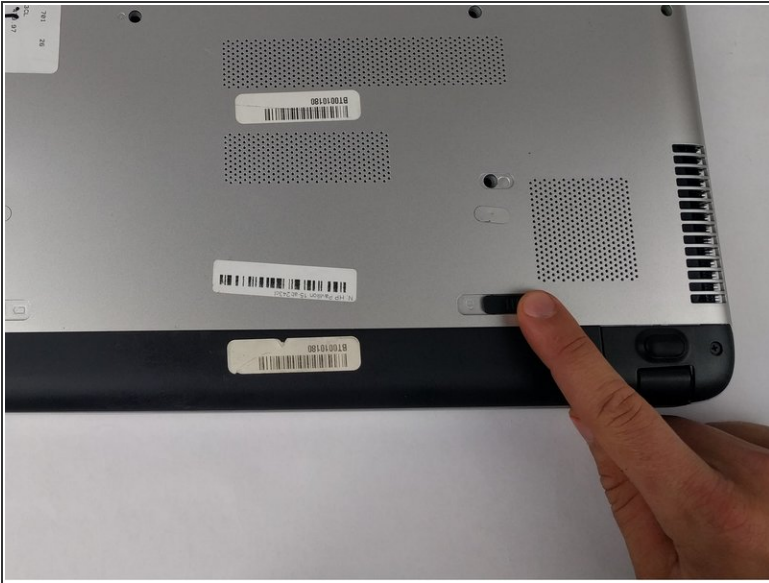
This guide will show you how to access the cooling fan and replace it. The cooling fan is necessary to keep your laptop from overheating.

---

### TOOLS:

- [Phillips #1 Screwdriver](#) (1)
  - [Phillips #00 Screwdriver](#) (1)
  - [Prying and Opening Tool Assortment](#) (1)
  - [Tweezers](#) (1)
-

## Step 1 — Battery



- Slide the battery lock tab toward the center of the battery to the unlock position.

## Step 2



- Slide the battery release switch to the right until the battery pops out.

### Step 3



- Grabbing the top edge of the battery, rotate it toward you and then lift upward to relieve the battery from its slot.

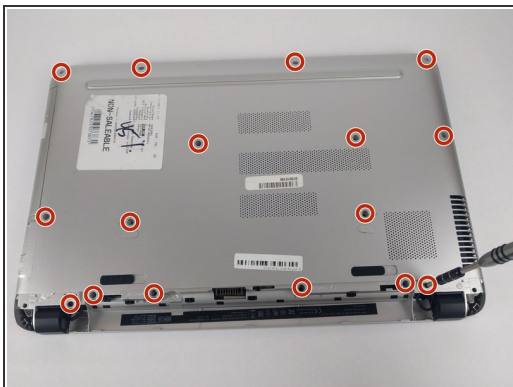
### Step 4 — Laptop Case



- With the battery removed, remove both black plastic covers with a plastic opening tool. Unscrew both 7.5 mm screws from the tabs, using a PH1 screw driver. Using a plastic opening tool, pry off both covers.



## Step 5



- Remove all 16 of the 3.5 mm screws with a PH1 screwdriver and pry/slide the CD drive out of laptop.

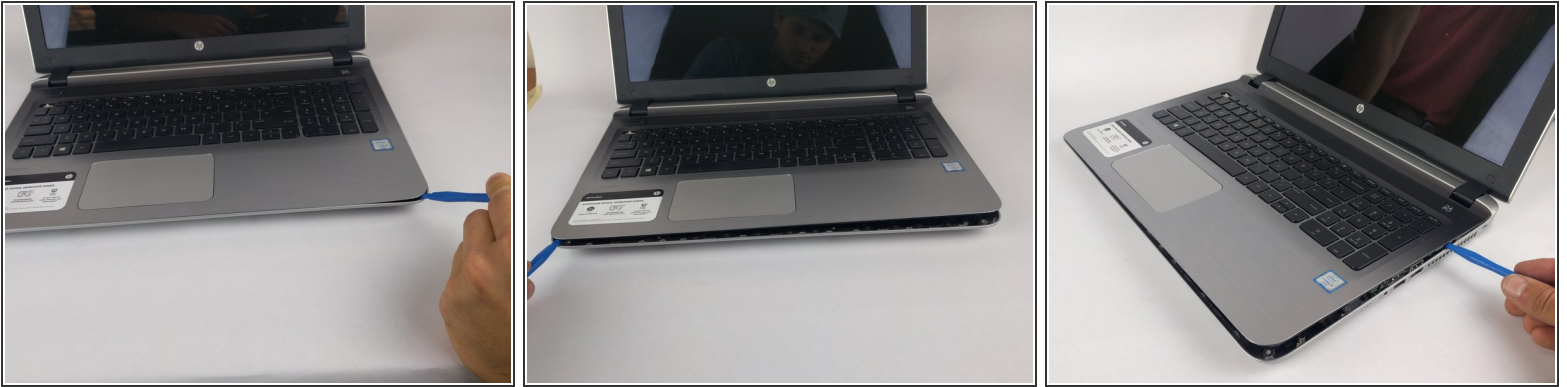
## Step 6



- With the CD drive removed, unscrew the two 2mm silver screws with a PH00.

⚠ These can strip easily, so take your time removing.

## Step 7



- Using a plastic opening tool, begin to pry edge of case away from the laptop. Work around the edges until all sides, except back, are open.

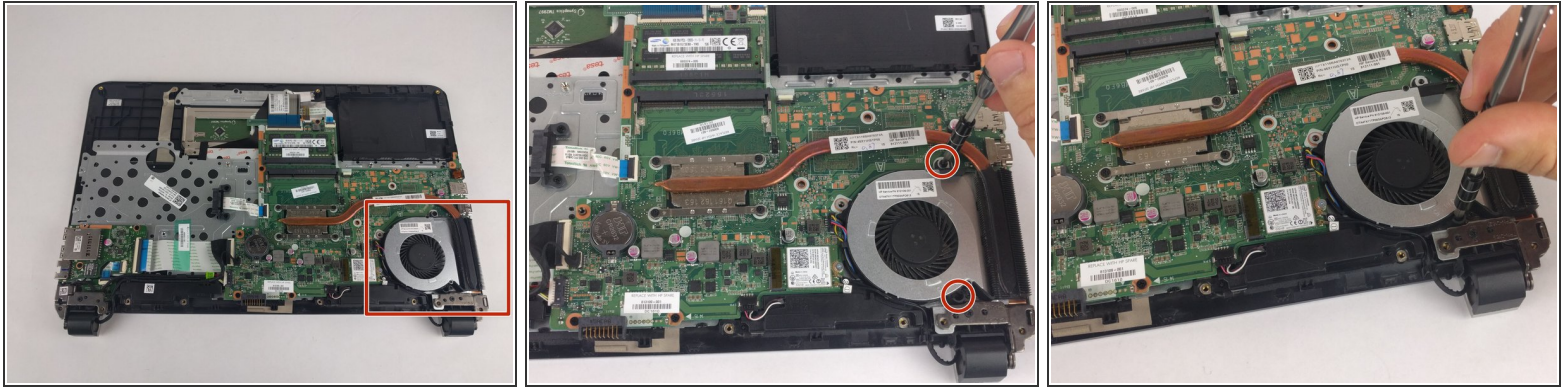
## Step 8



- On the back side of the laptop, where the battery is, there are 12 black plastic clips. Use a plastic opening tool and pry all of these clips, unlatching them from the case.
- Once clips are free, open the laptop. Rotating the case off, around the hinges, works best to remove the case.

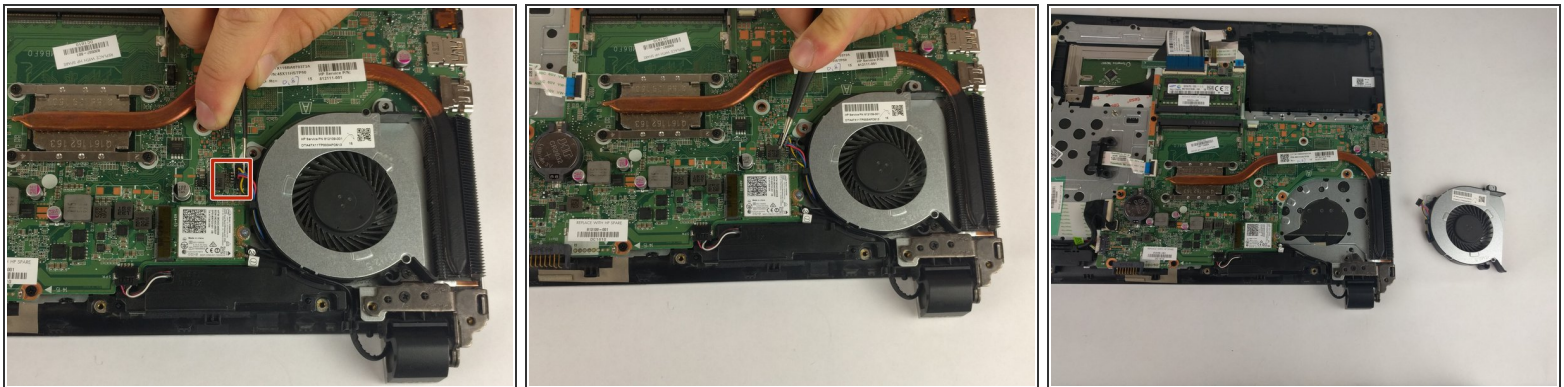


## Step 9 — Cooling Fan



- Use a PH00 screw driver to remove the two 3.5 mm screws holding the fan in place.
- ⓘ Careful with the lower screw, there are two screws side by side. The screw to the left side of the device is the one you want and is connected to fan, the one on the right side is not for fan.

## Step 10



- Use long nose tweezers to remove connector. Fan will lift out.

To reassemble your device, follow these instructions in reverse order.