



HP Pavilion 15-b109wm Keyboard Replacement

How to replace a HP Pavilion 15-b109wm keyboard.

Written By: David Atunlute



INTRODUCTION

This replacement guide will show how to replace the keyboard of an HP Pavilion 15-b109wm. This process will take between 10-20 minutes, if done correctly. Remember to take your time and do the steps correctly and gently to avoid parts breakage.



TOOLS:

- [Heavy-Duty Spudger](#) (1)
 - [iFixit Opening Tools](#) (1)
 - [JIS #1](#) (1)
-

Step 1 — Battery



- Power off the device and disconnect from any power source.

Step 2



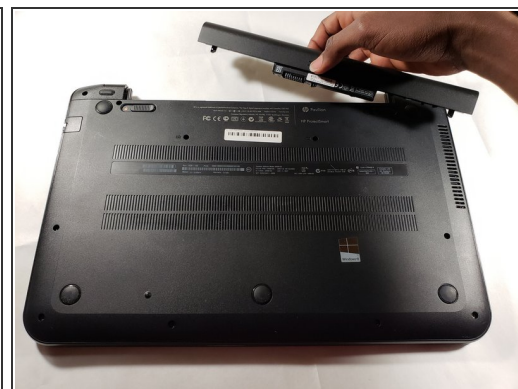
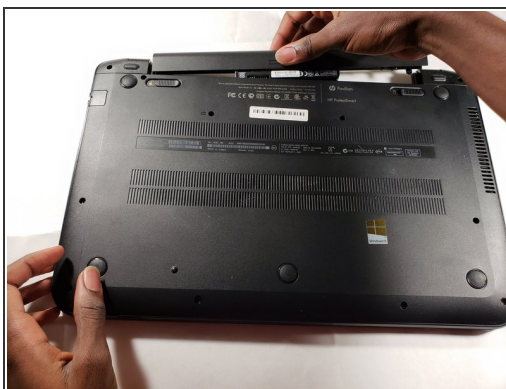
- Turn the device upside down and ensure the back of the device is facing you.

Step 3



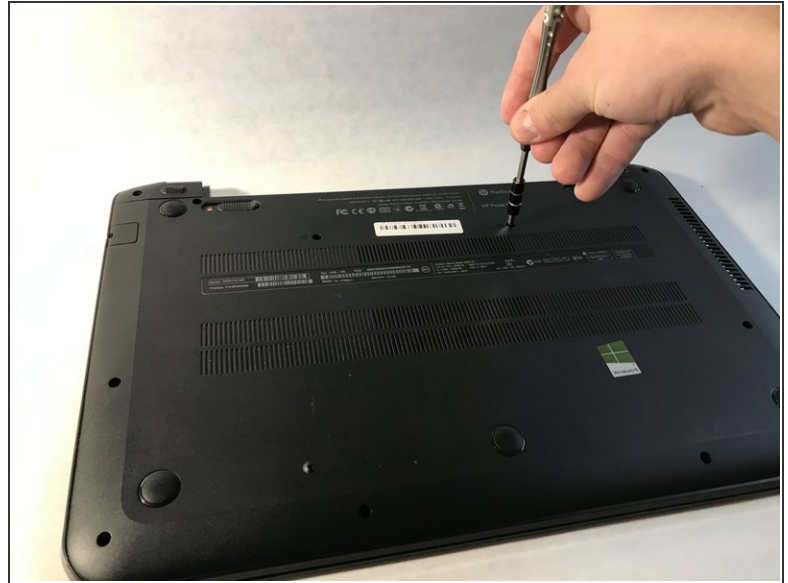
- Push both buttons towards one another simultaneously. The battery slightly pops out.

Step 4



- ⚠ Pull out the battery from the device's battery slot.

Step 5 — Keyboard



- Use JIS #1 screwdriver to remove the eleven 6 mm screws.

Step 6



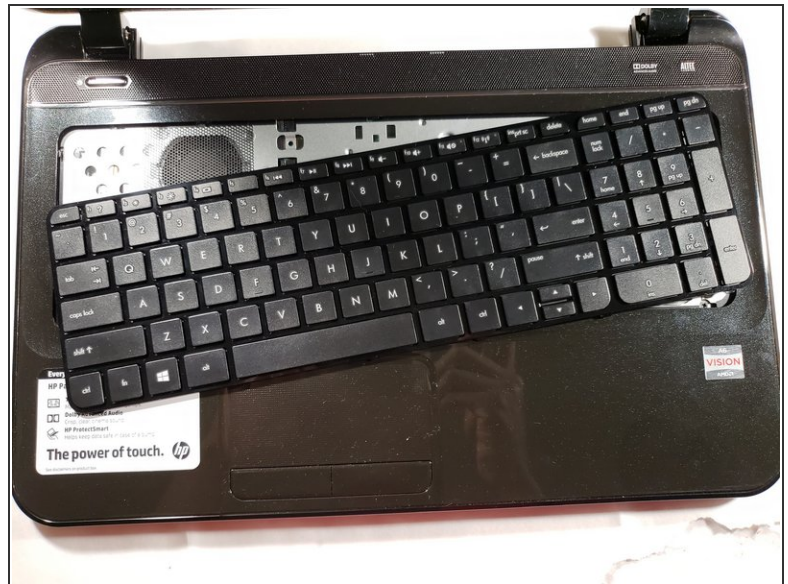
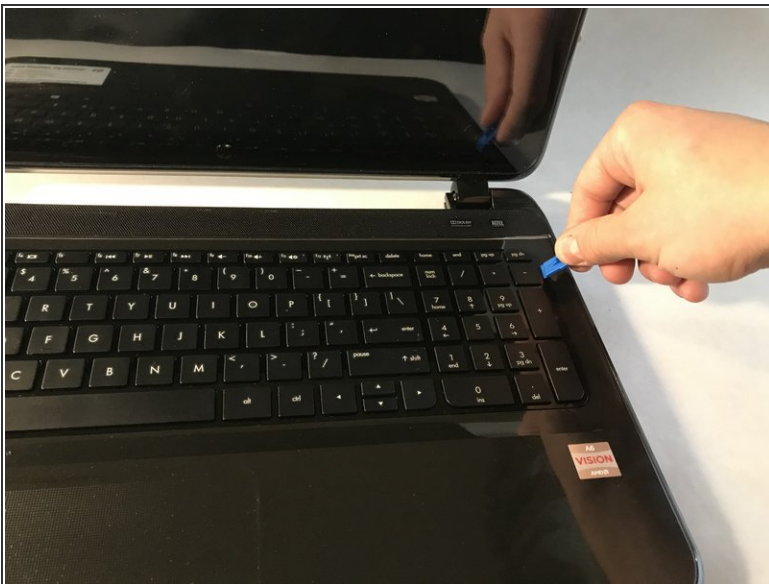
- Locate the two screw holes that allow access to removing the keyboard.
- ⓘ There is a keyboard sign beside both keyboard access holes.

Step 7



- Turn the device onto its side.
- Using a heavy duty spudger, gently disengage the keyboard.

Step 8



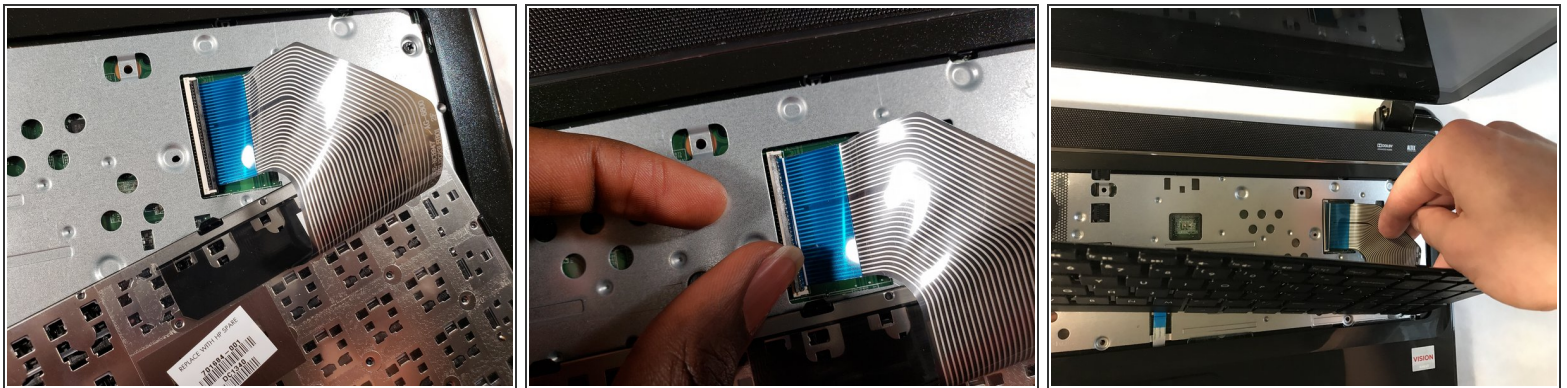
- Using a plastic opening tool, release the keyboard clips.

Step 9



- Tilt the keyboard to expose the *Zero Insertion Force* connector to which the keyboard cable is attached.

Step 10



- Disconnect the keyboard cable from the motherboard by detaching the *Zero Insertion Force* connector.

i To detach the connector, release by lifting the black plastic tab up.

To reassemble your device, follow these instructions in reverse order.