



HP Pavilion 15-d017cl Hard Drive Replacement

Use this guide to remove the hard drive in your HP Pavilion 15-d017cl.

Written By: Noah Pecor



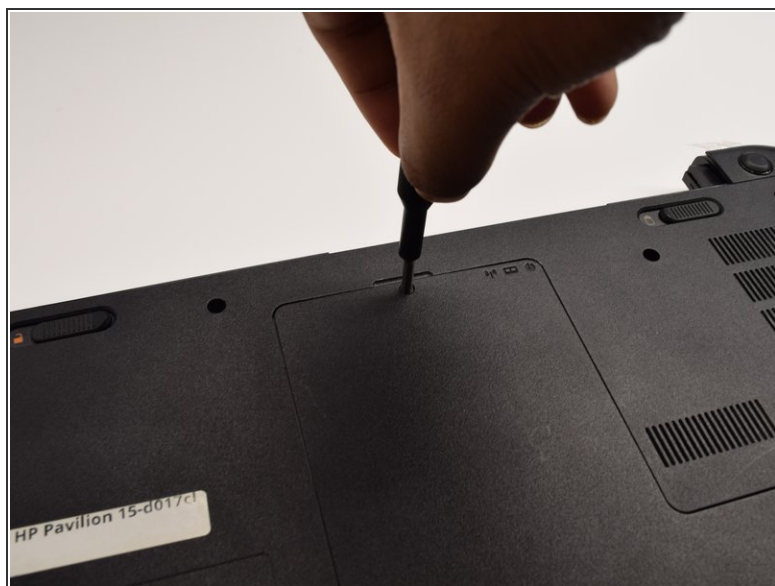
INTRODUCTION

This guide will help you be able to take out and replace the Hard drive in the HP Pavilion 15-d017cl. A hard disk drive is a non-volatile memory hardware device that permanently stores and retrieves data on a computer. This guide requires a Phillips #1 screwdriver, spudger, tweezers, and an iFixit opening tool.

TOOLS:

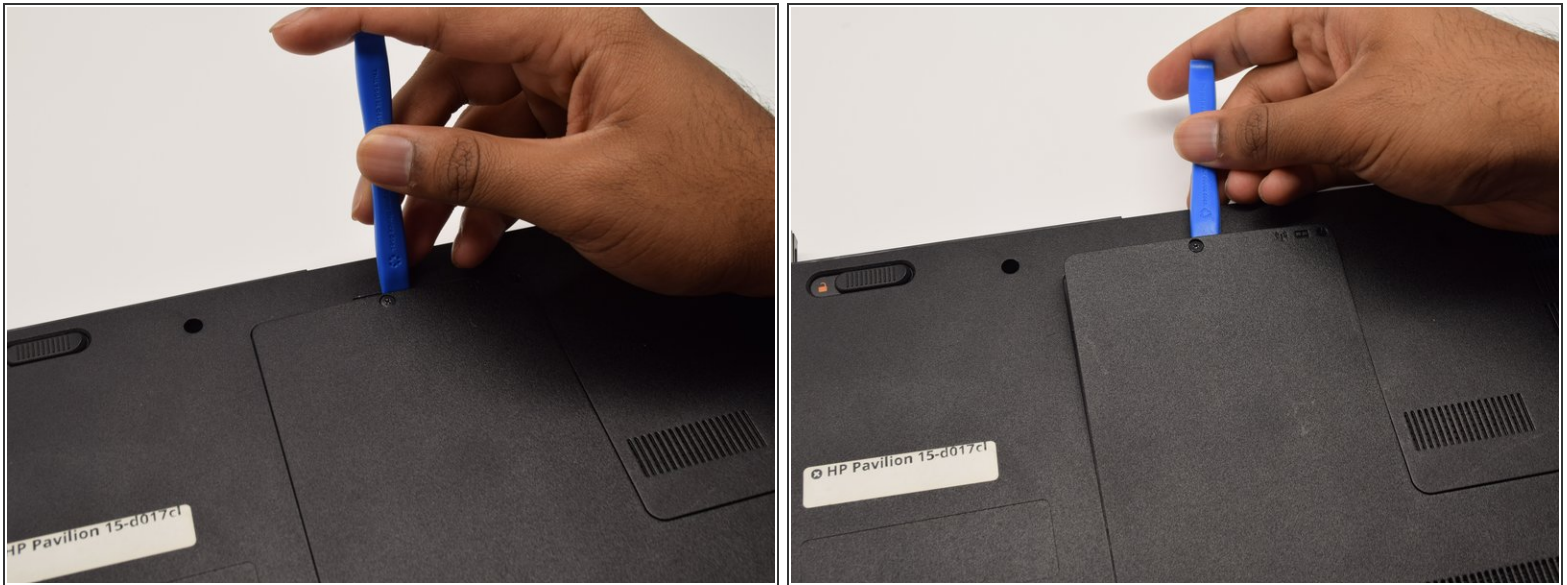
- [Spudger](#) (1)
 - [iFixit Opening Tools](#) (1)
 - [Tweezers](#) (1)
 - [Phillips #1 Screwdriver](#) (1)
-

Step 1 — Hard Drive



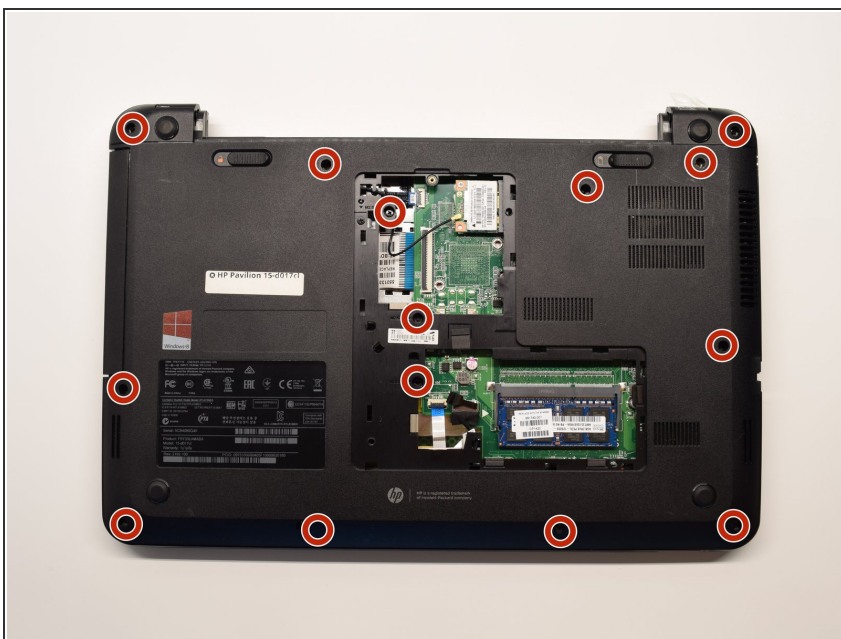
- Flip the laptop onto its back in order to have access to the back "L" shaped panel.
- Using a Phillips #1 Screwdriver, unscrew the 5mm screw until the L-shaped panel feels like it can be removed.

Step 2



- To remove the L-shaped panel, use the plastic opening tool to pry the panel from the back of the laptop. Make sure to move the tool the entire way around the panel.
- ⓘ This may require a good amount of strength to loosen the panel. As the opening tool is moving around the panel, clicking noises will be heard.


Step 3




- Remove the fifteen (15) 5 mm screws using the Phillips #1 Screwdriver.

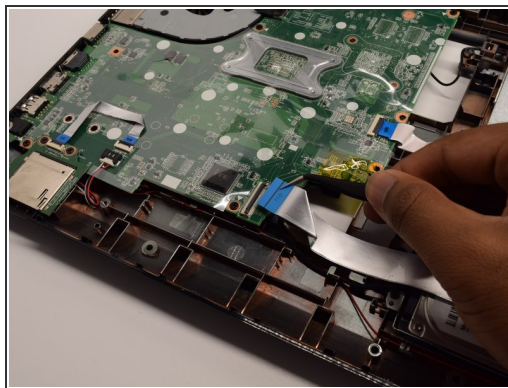
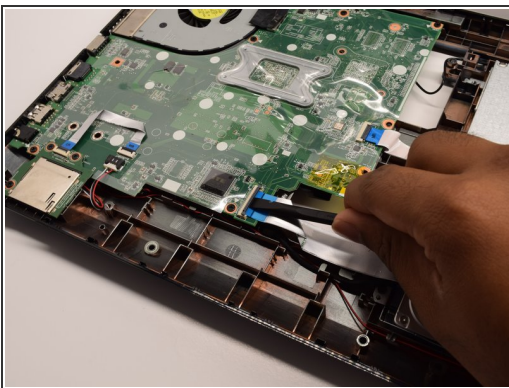
Step 4



 Flip the computer over so the screen and keyboard are showing.

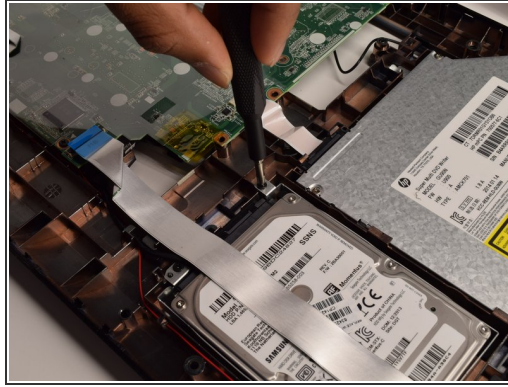
- Using the opener tools, pry around the edges of the computer in between the keyboard and the base.
-  Apply enough pressure to unlatch the keyboard but be cautious of the parts under it.
- Flip the keyboard up toward the screen to access the motherboard.

Step 5



- Using the Spudger, press into the silver latch and lift it up.
- Using the Tweezers, pull the Ribbon Cable out of the silver latch.

Step 6



- Using a Phillips #1 screwdriver, remove the three screws located around the hard drive.
- When finished unscrewing, pull the hard drive out.

To reassemble your device, follow these instructions in reverse order.