



# HP Pavilion 15-d017cl RAM Replacement

This guide shows how to remove and replace the RAM on the HP Pavilion 15-d017cl.

Written By: Alana Dawson



## INTRODUCTION

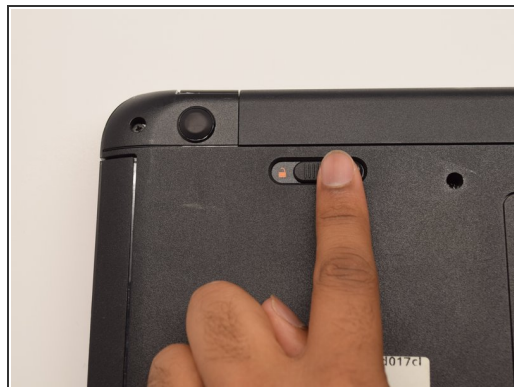
If your computer is responding slowly, it is possible that your current RAM might need to be replaced. To check if the issue is your RAM, run Windows Memory Diagnostics. If it shows hardware errors, consider replacing it using this guide. This guide will show how to remove and replace the RAM on the HP Pavilion 15-d017cl. You will need a Phillips 1 screwdriver, a plastic opening tool, and a spudger to complete this guide. You will not need to complete any difficult steps.




### TOOLS:

- [iFixit Opening Tools](#) (1)
  - [Spudger](#) (1)
  - [Phillips #1 Screwdriver](#) (1)
-

## Step 1 — Battery



- To unlock the top left latch, place your finger on the black latch and slide toward the center of the computer.

 You do not need to hold this latch when removing the battery.

## Step 2



- To unlock the top right latch, slide the black latch towards the center of the computer.

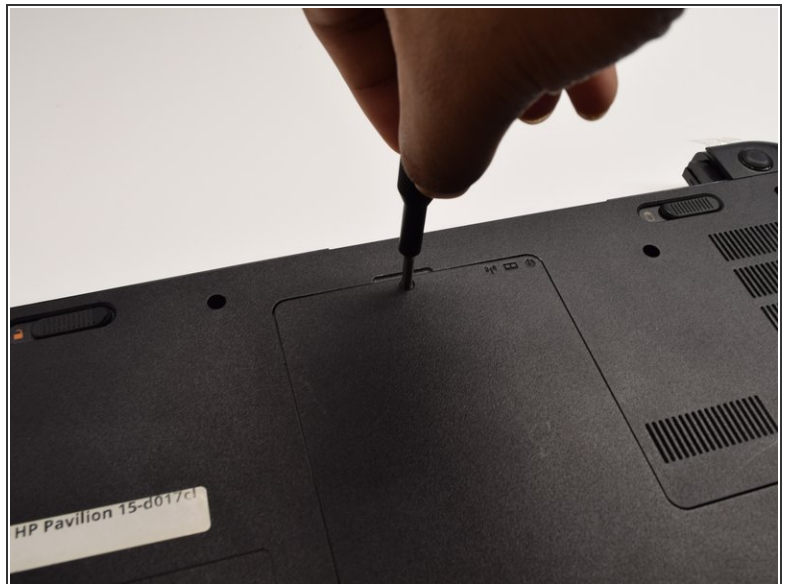


### Step 3



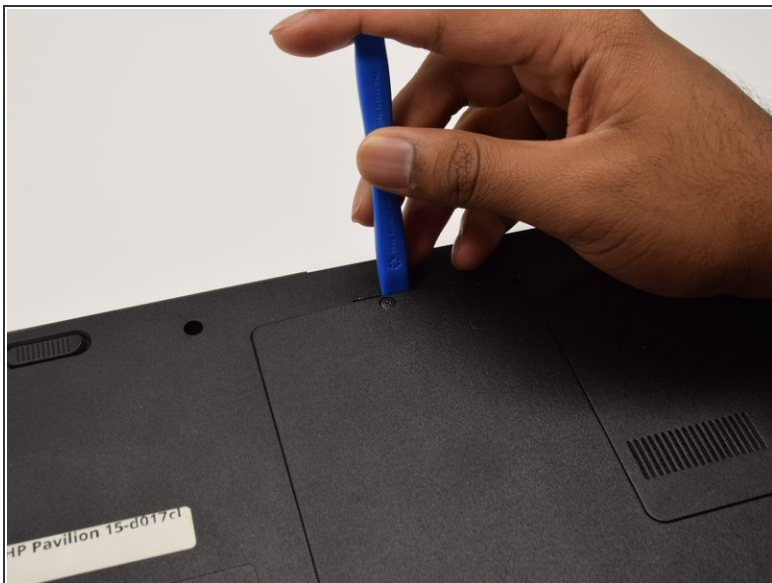
- i The right latch is spring loaded, hold the latch towards the center of the computer.
- To remove the battery, pull the battery bar away from the computer.

### Step 4 — RAM



- Flip the laptop onto its back in order to have access to the back panel.
- Using a Phillips #1 Screwdriver, unscrew the 5mm screw until the L-shaped panel feels like it can be removed.

## Step 5



- To remove the L-shaped panel, use the plastic opening tool to pry the panel from the back of the laptop. Make sure to move the tool the entire way around the panel.
- ⓘ This may require a good amount of strength to loosen the panel. As the opening tool is moving around the panel, clicking noises will be heard.

## Step 6



- Using a spudger, press down on the silver latches that are holding the RAM in place. The RAM looks like a blue rectangle and has a size of about 1 x 2 inches. A slight click will be heard, and the RAM should pop out. You can then pull it away from the laptop.
- ⓘ Now that the old RAM has been removed, the new RAM can be inserted back into the laptop by pressing it gently into the place where the old RAM was.

To reassemble your device, follow these instructions in reverse order.