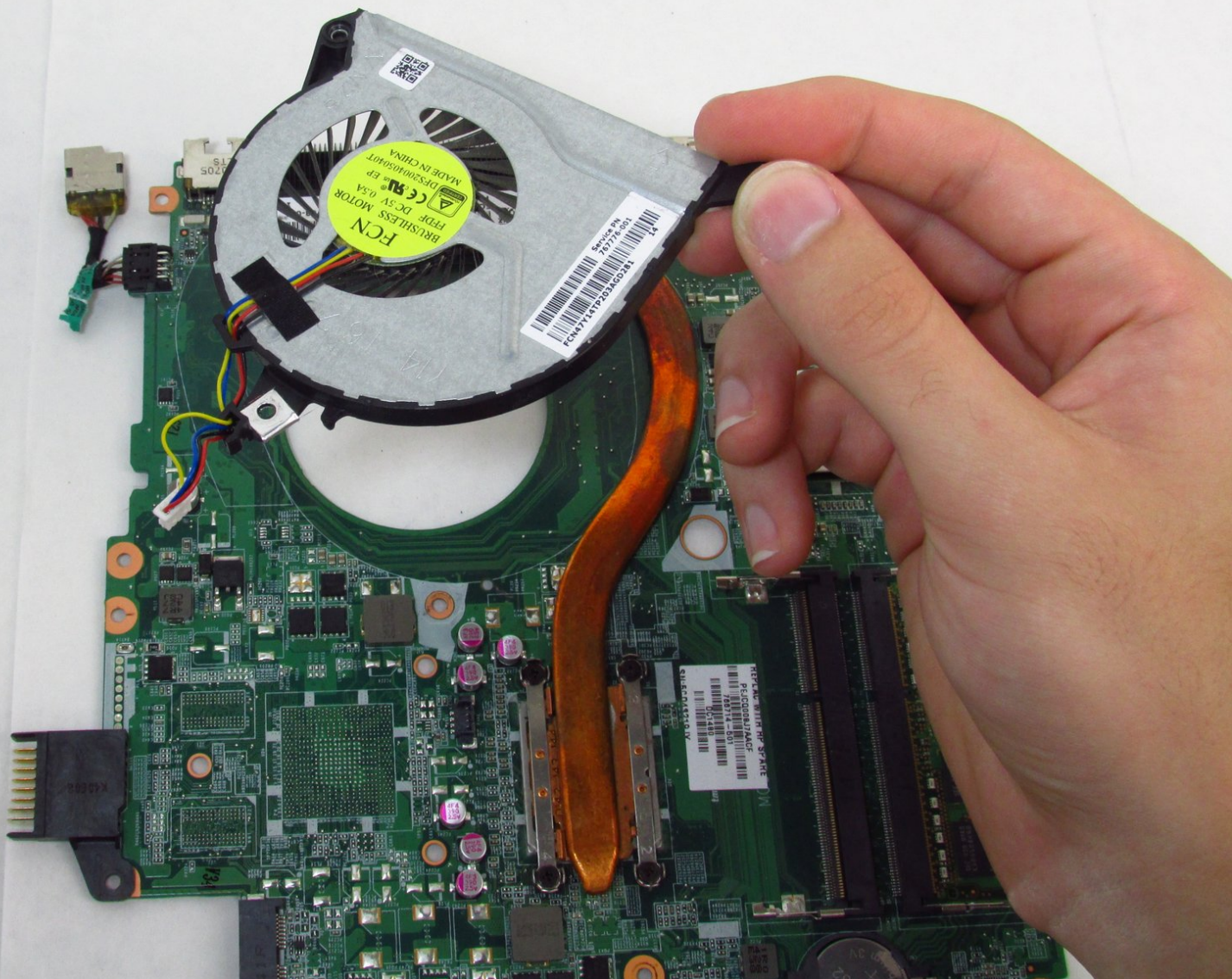




HP Pavilion 15-p046nr Fan Replacement

How to replace the fan of an HP Pavilion 15-p046nr.

Written By: Betsabe Hernandez



INTRODUCTION

If you have a faulty fan on your HP Pavilion 15-p046nr, you've come to the right place. This guide will walk you through how to replace your notebook's fan. You may need to replace your fan if your laptop is experiencing [overheating problems](#) or if it is being [excessively loud](#) and creating [high-pitched noises](#). You will need a magnetic project mat, Phillips 00 screwdriver, and plastic opening tool for this replacement. Be sure to [completely disconnect power from your device](#) before getting started.

TOOLS:

- [Magnetic Project Mat](#) (1)
 - [Phillips #00 Screwdriver](#) (1)
 - [iFixit Opening Tools](#) (1)
-

Step 1 — Battery



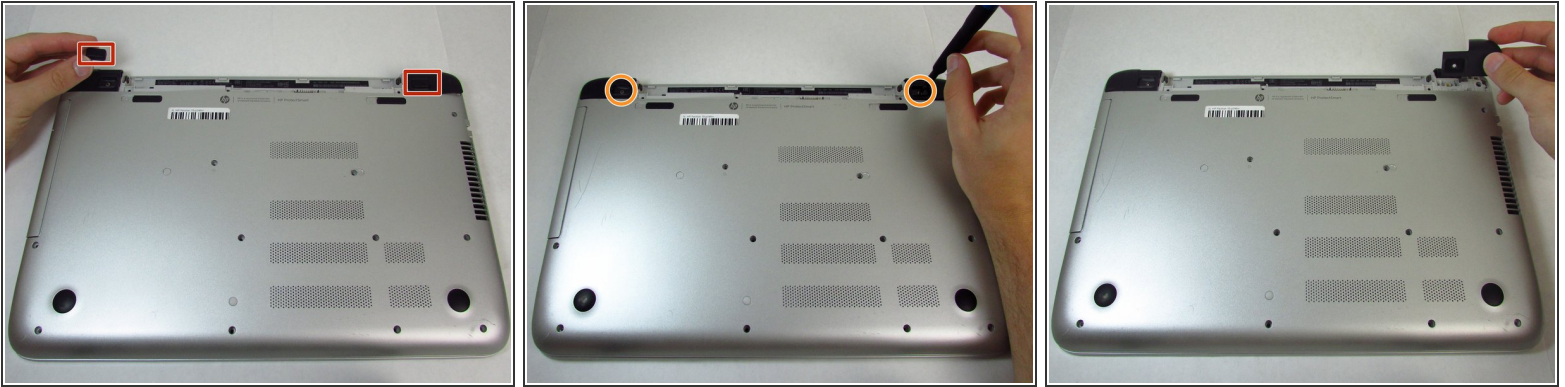
- Flip the laptop over so the bottom is facing up.
- Place your finger on the top left-hand slide button with the lock symbol.
- i* Moving the slide does require some force.
- Slide the button to the right so that an unlocked symbol is visible.

Step 2



- Place your finger or thumb on the top right-hand slide with the battery symbol visible.
- Slide the button to the left.
- i* Moving the slide will require some force.
- Lift the battery off the computer with your thumb.
- i* You will not need to slide the right button with the battery to reinstall the battery.

Step 3 — Integrated Keyboard



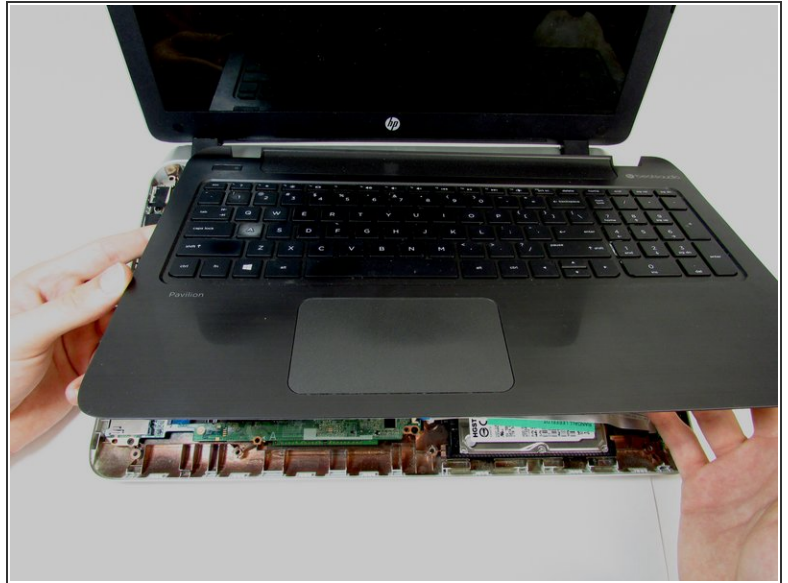
- Remove screw covers from the hinge covers on the upper left and right side.
- Unscrew one 7 mm screw from each hinge cover using the Phillips #00 screwdriver.
- Remove hinge covers by pulling up and out on the top of the cover.

Step 4



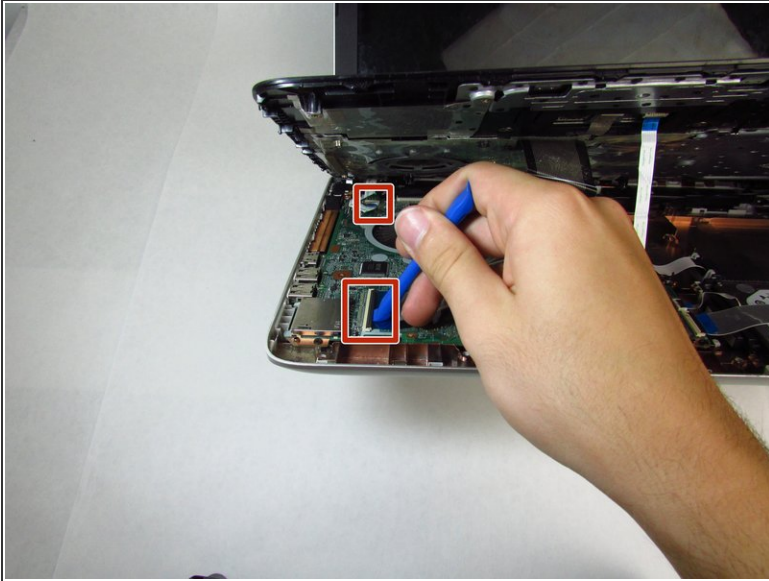
- Remove thirteen 7 mm screws from the back panel using the Phillips #00 screwdriver.
- Remove three 5 mm screws from the back panel using the Phillips #00 screwdriver.
- Grab the disk drive on the left side and pull the disk drive out completely.
- Flip the laptop over and open the display.

Step 5



- Run the plastic opening tool along the entire edge of the keyboard to separate the keyboard from the base of the laptop.
 - Gently lift the keyboard tray up.
- ⚠ Use care to lift the keyboard off of the device. The keyboard is still attached by ribbon cables.

Step 6



- Use the tip of the blue plastic opening tool to gently flip-up the grey locking flap of the two ribbon cables connecting the keyboard to the device.
- ⚠ Make sure to only lift the flap and not the connector socket because the socket easily breaks off.
- Grab the ribbon cable and gently pull away from the socket.
- 🔧 To reinstall, insert the ribbon cable into the connector and close the flap on the black line.

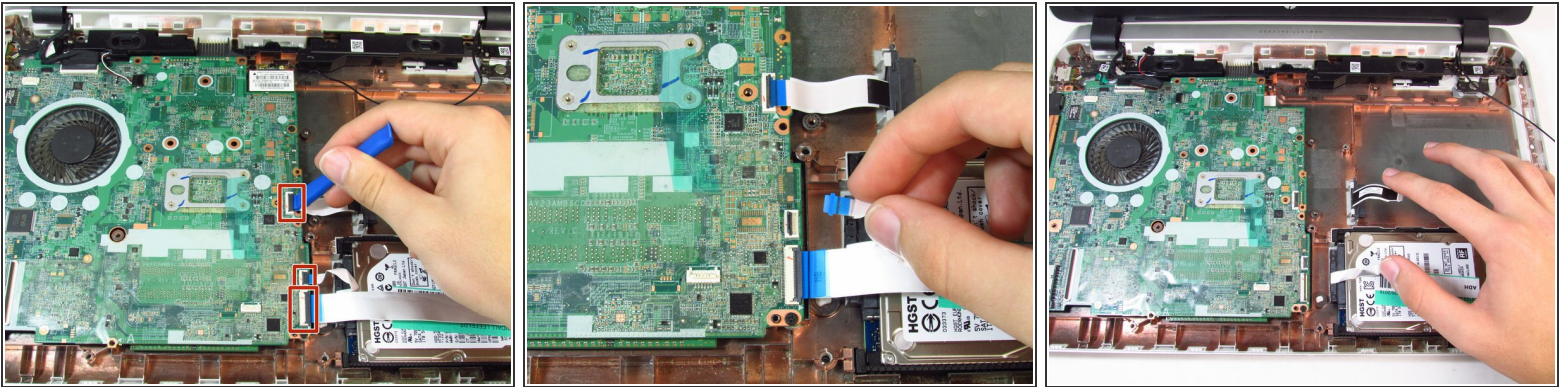
Step 7



- Lift the keyboard up and away from the device.

⚠ Removing the keyboard exposes the motherboard and its sensitive components. Ensure no tools or items are set on the motherboard or it could cause damage.

Step 8 — Motherboard



- Use the tip of the blue plastic opening tool to gently flip-up the grey locking flap of the three ribbon cables on the bottom right corner of the motherboard.

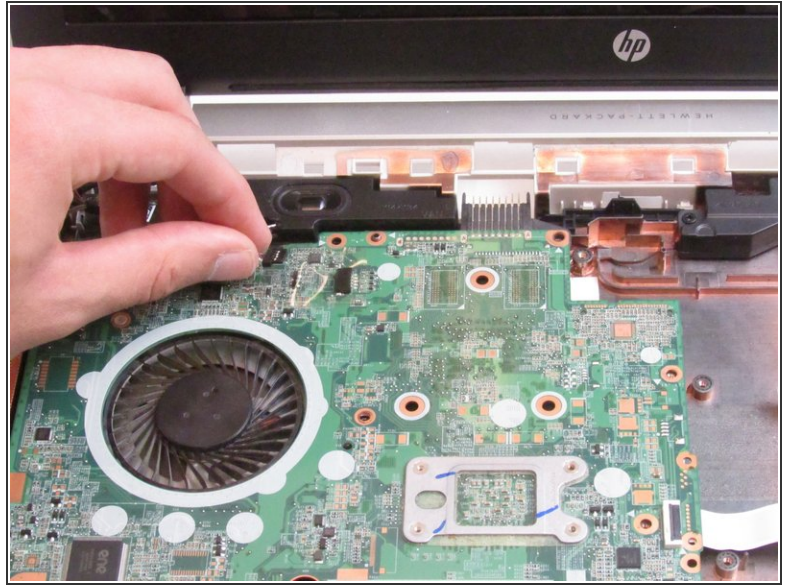
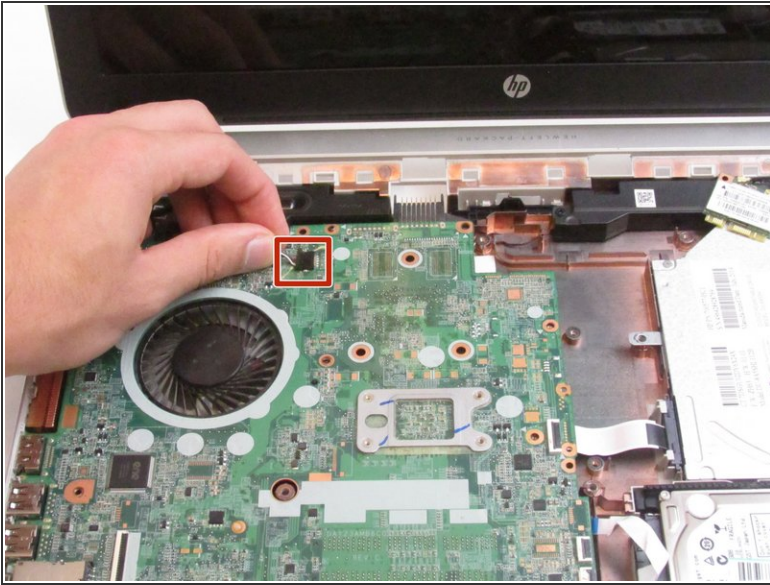
⚠ Make sure to only lift the flap and not the connector socket because the socket easily breaks off.

- Grab each ribbon cable and gently pull away from the socket.

🔧 To reinstall, insert the ribbon cable into the connector and close the flap on the black line.

- Move the ribbon cables away from the motherboard.

Step 9

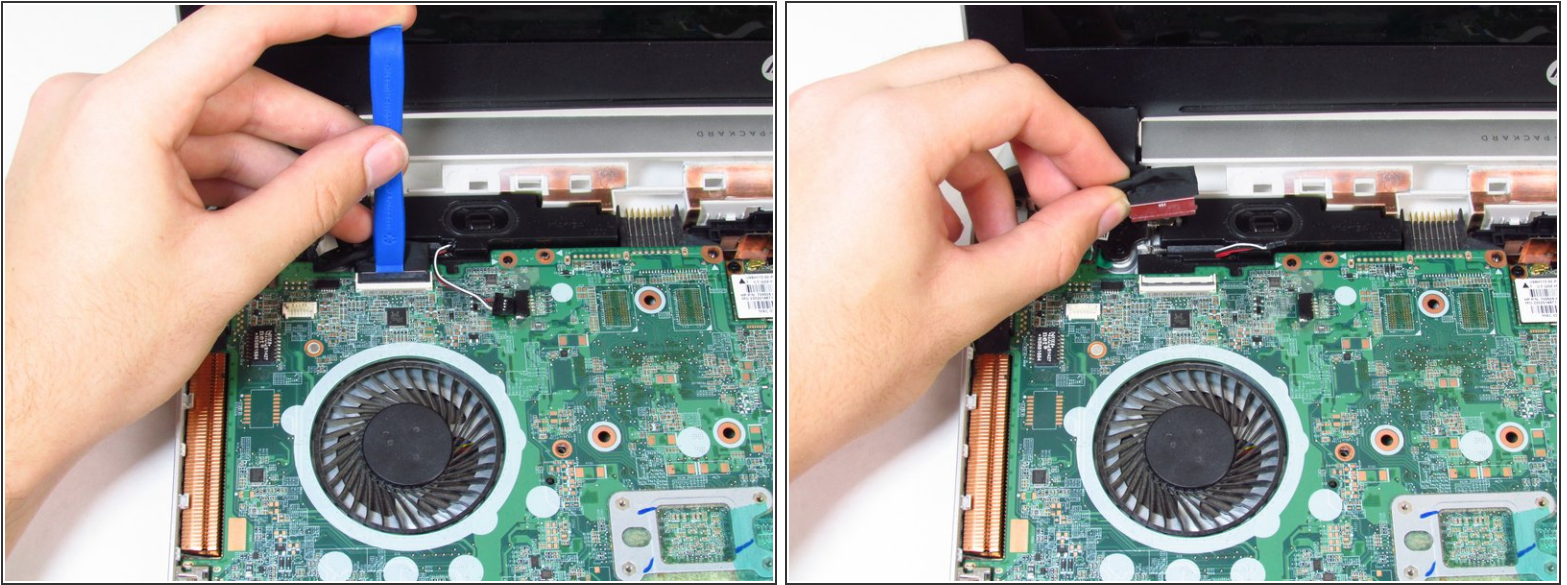


- To disconnect the speakers, carefully pull on the cables that connect to the motherboard from the speaker system.

⚠ Be careful not to yank or jerk the cables because they can be easily broken.

- Move the speaker cables away from the motherboard.

Step 10



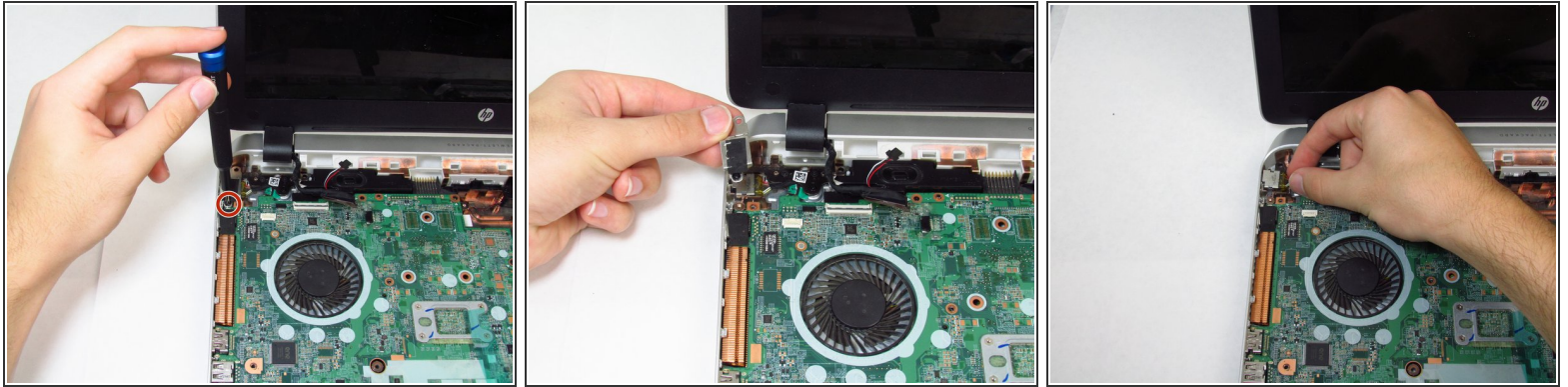
- Use the tip of the blue plastic opening tool or your fingernail to gently flip-up the grey locking flap of the webcam ribbon cable.
- ⚠ Make sure to only lift the flap and not the connector socket because the socket easily breaks off.
- Grab the ribbon cable cable and gently pull away from the socket.

Step 11



- Unscrew one 6 mm screw on the wireless card with the Phillips #00 screwdriver.
- ⓘ The wireless card will angle upwards when the screw is removed.
- Gently pull the wireless card away from the motherboard with the same angle that it rests.

Step 12



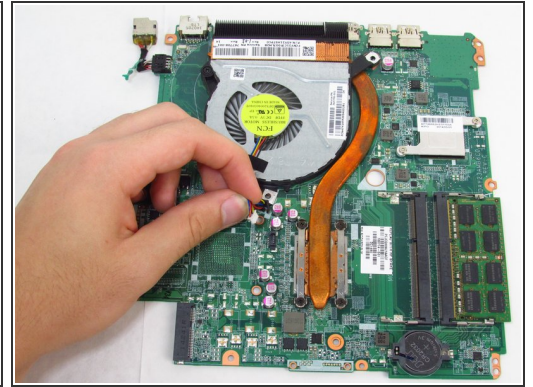
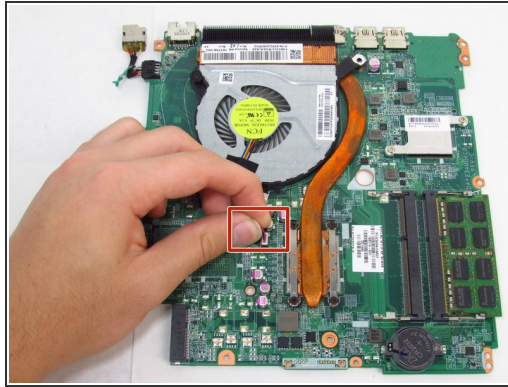
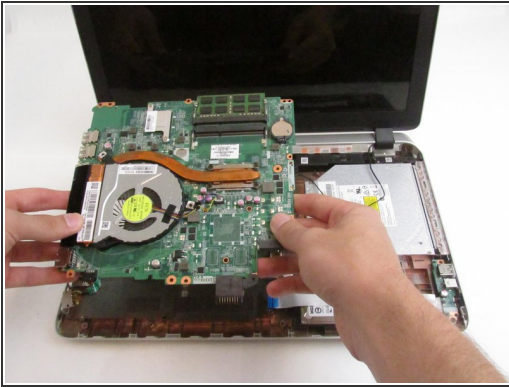
- In the upper left corner of the motherboard, unscrew one captive screw from the charger port cover with the Phillips #00 screwdriver.
- ⓘ "Captive screws" are those which will cannot be removed, but will instead remain within their screw hole after being disengaged.
- Remove the charger port cover.
- Carefully pull upwards on the charger port to disconnect it.
- ⓘ The charger port will stay attached to the device.

Step 13



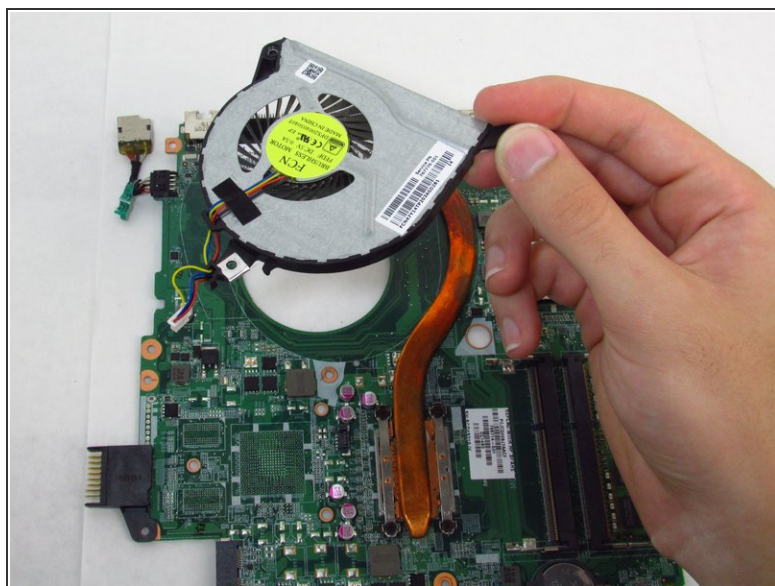
- Remove the four 6 mm screws from the motherboard using the Phillips #00 screwdriver.
 - Gently lift the motherboard directly up from the holding slots and remove the motherboard from the device.
- ⚠ Be careful not to put too much pressure on the motherboard while lifting it up, as there are many fragile circuits and chips on it.
- Remove the motherboard from the device once it's clear of all cables and slots.
- 📌 Be sure that all cables are clear before reinstalling the motherboard as to not catch any cables beneath.

Step 14 — Fan



- Flip the motherboard over so that the fan is visible.
 - Carefully pull out the power cable that connects the fan to the motherboard.
 - Move the power cord away from the motherboard.
- i** The power cord will remain attached to the fan.

Step 15



- Remove the three 6 mm screws that attach the fan to the motherboard using the Phillips 00 screwdriver.
- Gently remove the fan by grabbing the fan from the top right corner of the fan and pulling straight up.

To reassemble your device, follow these instructions in reverse order.