



HP Pavilion 15-p046nr Hard-Drive Replacement

How to replace the hard-drive of an HP Pavilion 15-p046nr.

Written By: Betsabe Hernandez



INTRODUCTION

If your hard drive no longer works on your HP Pavilion 15-p046nr, you've come to the right place. This guide will walk you through how to replace your notebook's hard drive. You may need to change your hard drive [if a loud noise can be heard every time the laptop attempts to access the hard drive](#) or if your [laptop refuses to turn on and shows an error message indicating an issue with hardware](#). You will need a magnetic project map, Phillips 00 screwdriver, T5 Torx screwdriver, and plastic opening tool for this replacement. Before you get started, be sure to [completely disconnect power from your device](#).



TOOLS:

- [Magnetic Project Mat](#) (1)
 - [iFixit Opening Tools](#) (1)
 - [Phillips #00 Screwdriver](#) (1)
 - [T5 Torx Screwdriver](#) (1)
-

Step 1 — Battery



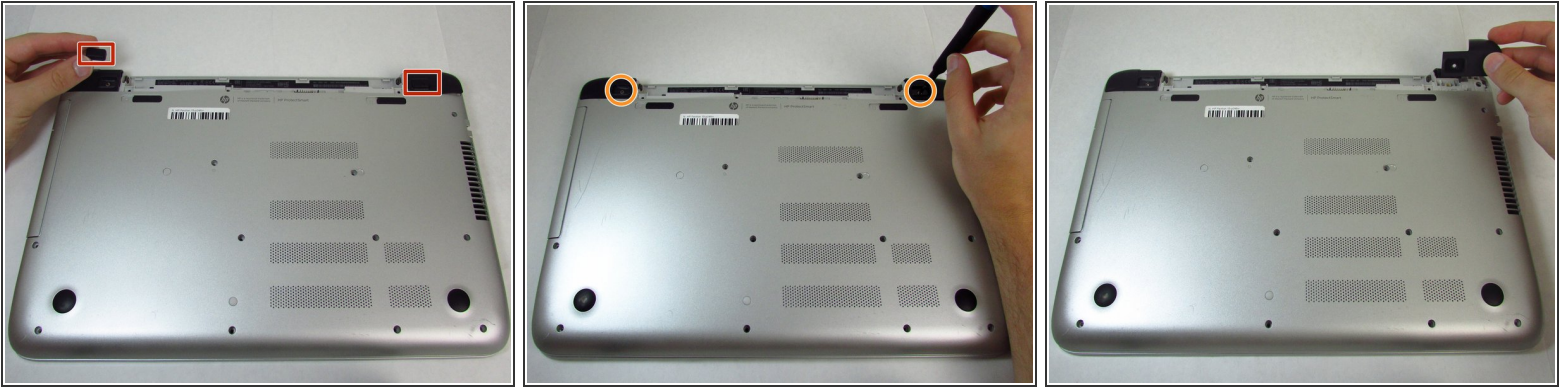
- Flip the laptop over so the bottom is facing up.
- Place your finger on the top left-hand slide button with the lock symbol.
- i* Moving the slide does require some force.
- Slide the button to the right so that an unlocked symbol is visible.

Step 2



- Place your finger or thumb on the top right-hand slide with the battery symbol visible.
- Slide the button to the left.
- i* Moving the slide will require some force.
- Lift the battery off the computer with your thumb.
- i* You will not need to slide the right button with the battery to reinstall the battery.

Step 3 — Integrated Keyboard



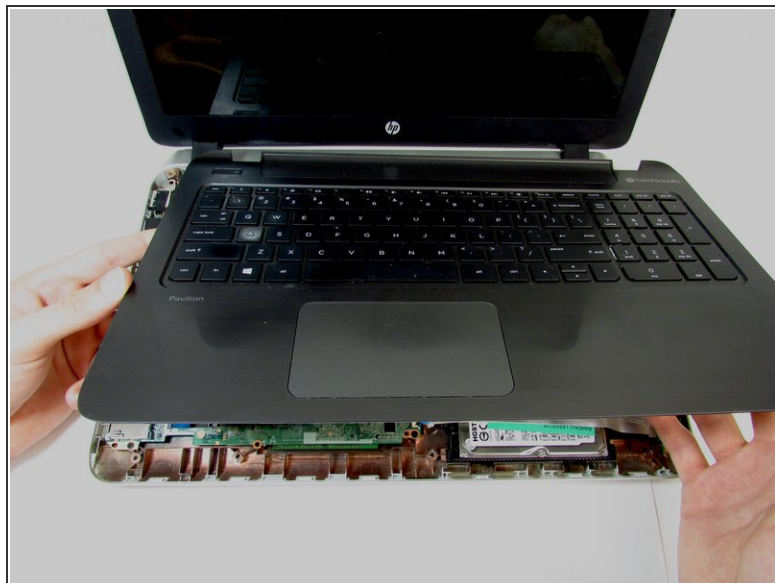
- Remove screw covers from the hinge covers on the upper left and right side.
- Unscrew one 7 mm screw from each hinge cover using the Phillips #00 screwdriver.
- Remove hinge covers by pulling up and out on the top of the cover.

Step 4



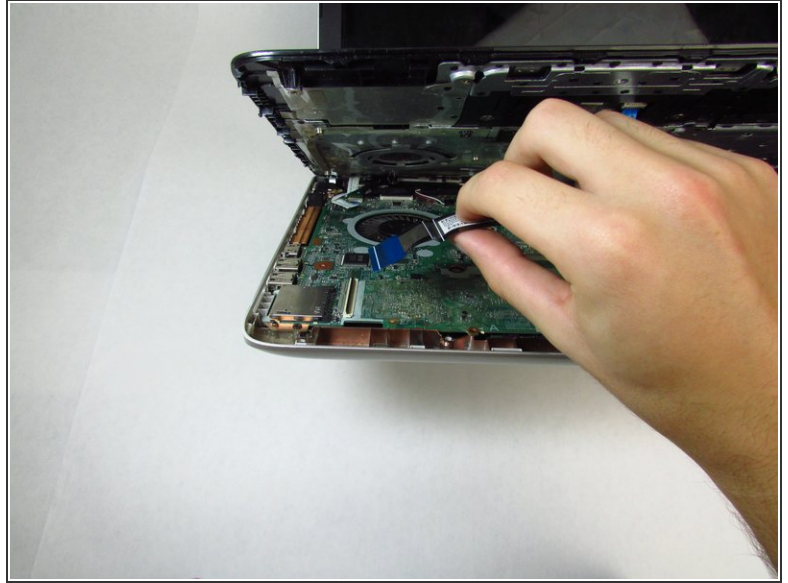
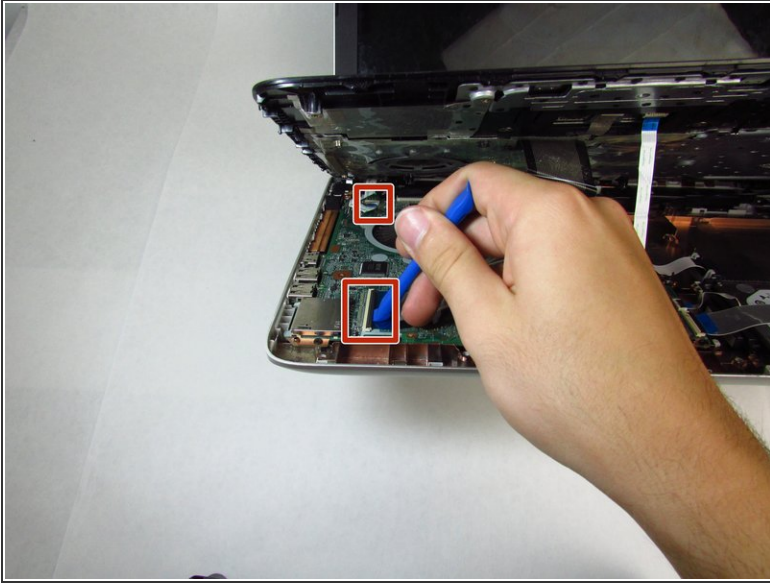
- Remove thirteen 7 mm screws from the back panel using the Phillips #00 screwdriver.
- Remove three 5 mm screws from the back panel using the Phillips #00 screwdriver.
- Grab the disk drive on the left side and pull the disk drive out completely.
- Flip the laptop over and open the display.

Step 5



- Run the plastic opening tool along the entire edge of the keyboard to separate the keyboard from the base of the laptop.
 - Gently lift the keyboard tray up.
- ⚠ Use care to lift the keyboard off of the device. The keyboard is still attached by ribbon cables.

Step 6




- Use the tip of the blue plastic opening tool to gently flip-up the grey locking flap of the two ribbon cables connecting the keyboard to the device.
- ⚠ Make sure to only lift the flap and not the connector socket because the socket easily breaks off.
- Grab the ribbon cable and gently pull away from the socket.
- 🔧 To reinstall, insert the ribbon cable into the connector and close the flap on the black line.

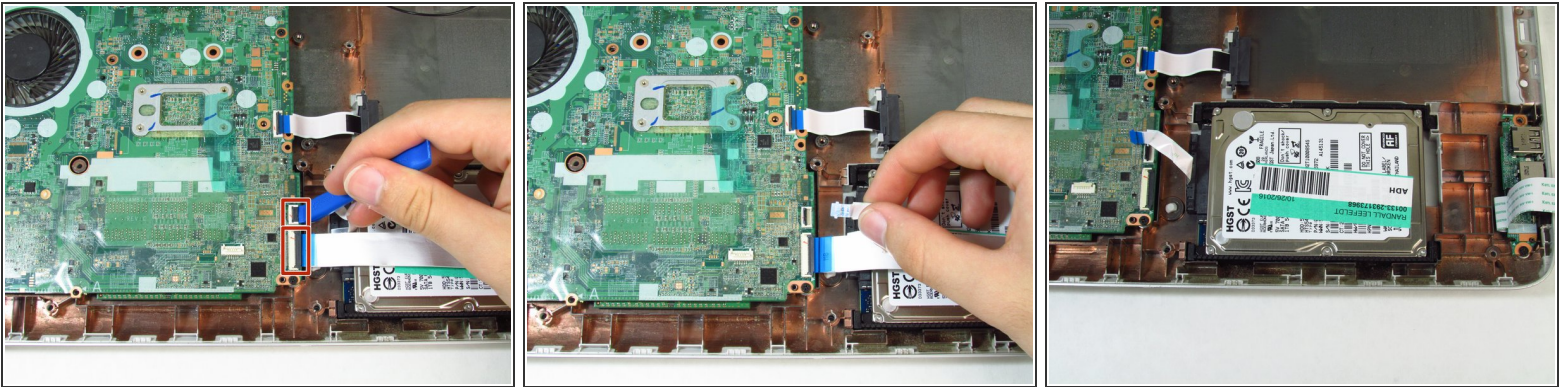
Step 7




- Lift the keyboard up and away from the device.

 Removing the keyboard exposes the motherboard and its sensitive components. Ensure no tools or items are set on the motherboard or it could cause damage.


Step 8 — Hard-Drive



- On the bottom right corner of the mother board, use the tip of the blue plastic opening tool to gently flip-up the grey locking flap of the bottom two ribbon cables.

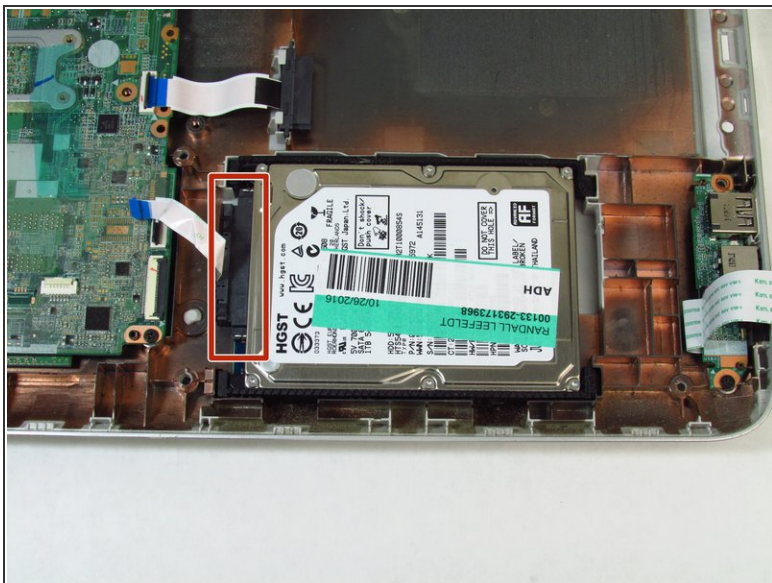
 Make sure to only lift the flap and not the connector socket because the socket easily breaks off.

- Grab each ribbon cable cable and gently pull away from the socket.

 To reinstall, insert the ribbon cable into the connector and close the flap on the black line.

- Uncover the hard drive by moving the bottom ribbon cable to the far right.

Step 9



- Lift the hard drive directly up and away the device, unplugging it from the cable interface as it's removed.
- ☑ You will most likely need to remove the rubber hard drive enclosure and place it around your new hard drive as you reinstall the new part.

To reassemble your device, follow these instructions in reverse order.