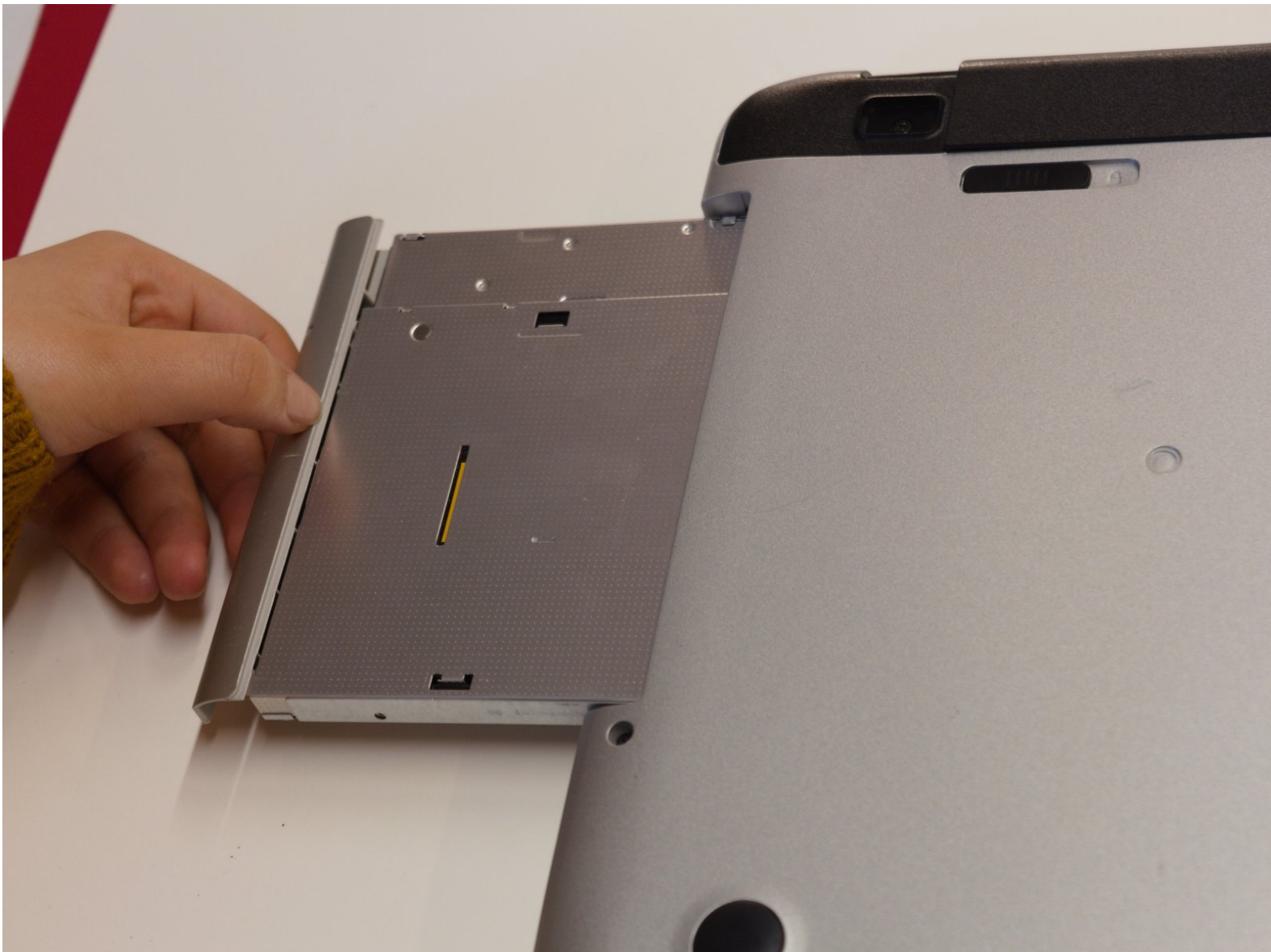




# HP Pavilion 15-p214dx Disk Drive Replacement

This guide describes how to replace the HP Pavilion 15-p214dx's disk drive.

Written By: Patrick Seaver



## INTRODUCTION

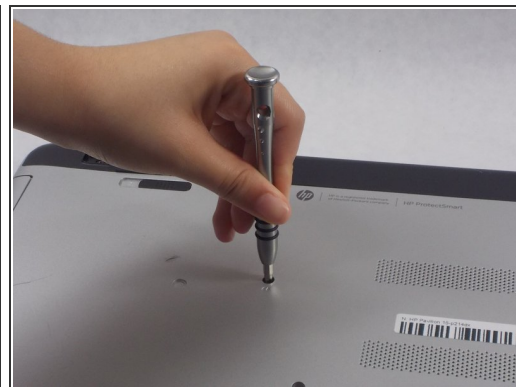
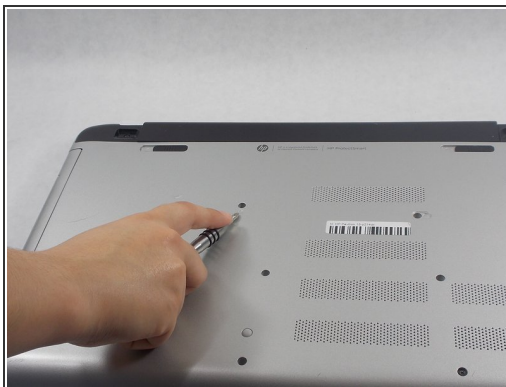
If you need to remove or replace your computer's disk drive, follow this guide. To do this, you will need a Philips #0 screwdriver head and maybe a plastic opening tool if you have short fingernails. The disk drive is held in place by a single screw, so there will be no difficult steps.



### TOOLS:

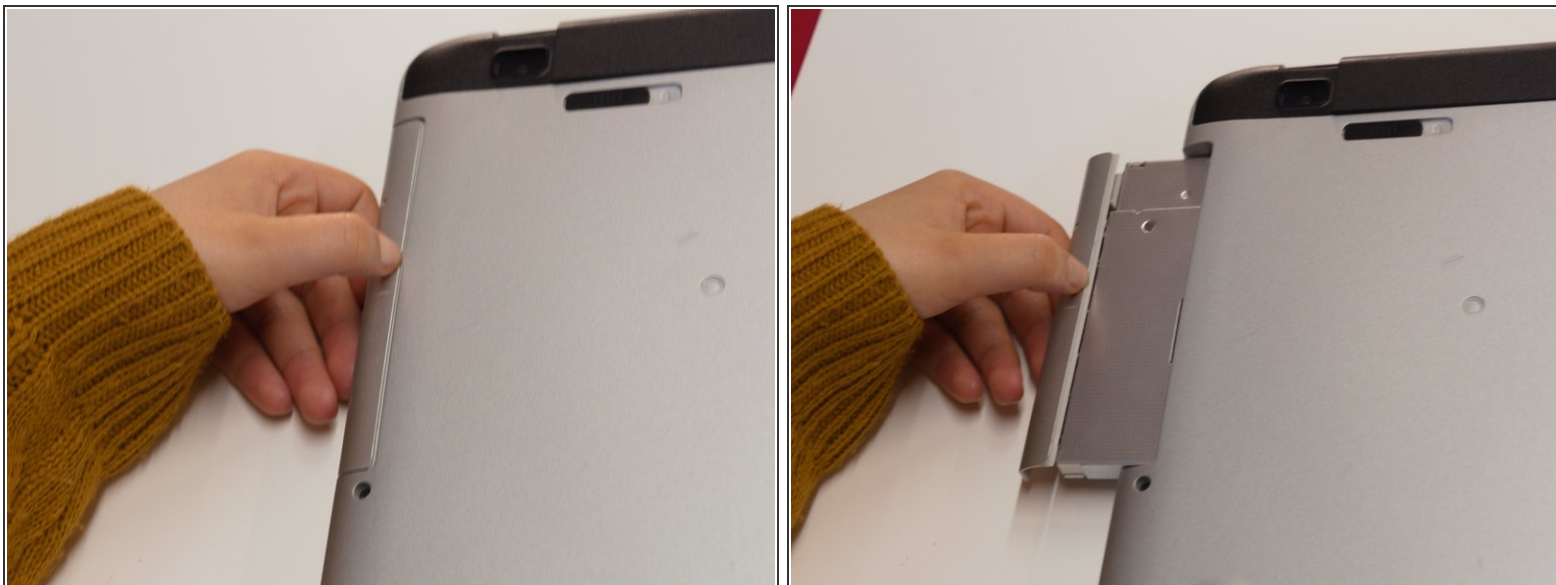
- [Phillips #0 Screwdriver](#) (1)
  - [iFixit Opening Tools](#) (1)
-

## Step 1 — Disk Drive



- Place your laptop on a flat surface with the bottom facing upwards. The HP logo should be facing downwards.
- Locate the disk drive screw. It is a 7mm screw that can be found to the upper left on label on the bottom of the computer and is marked with a disk drive symbol.
- Remove this screw using a Philips #0 screwdriver.

## Step 2



- Place your thumbnail between the disk drive exterior and your laptop's bottom cover.
  - ❗ If your nail is not long enough to do this, you can use a prying tool instead.
- Pull outwards to slide the disk drive out of its slot.
  - ★ Due to how the disk drive's slot is constructed, the drive must be properly aligned to fit back in. It may take a couple attempts to properly align it.

To reassemble your device, follow these instructions in reverse order.