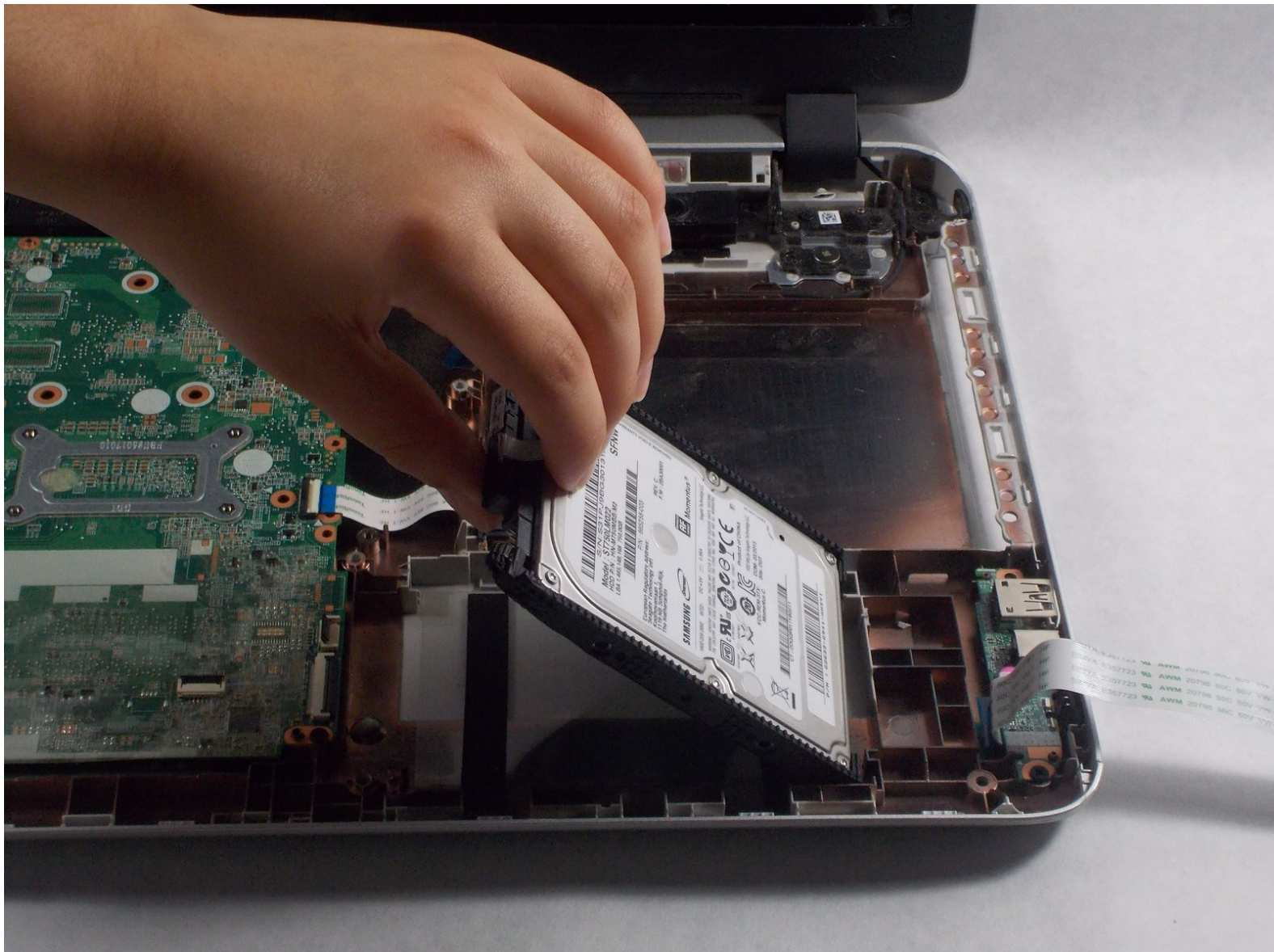




HP Pavilion 15-p214dx Hard Drive Replacement

This guide describes how to replace the HP Pavilion 15-p214dx's hard drive.

Written By: Patrick Seaver



INTRODUCTION

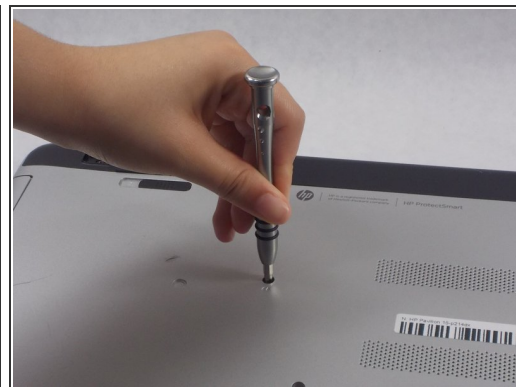
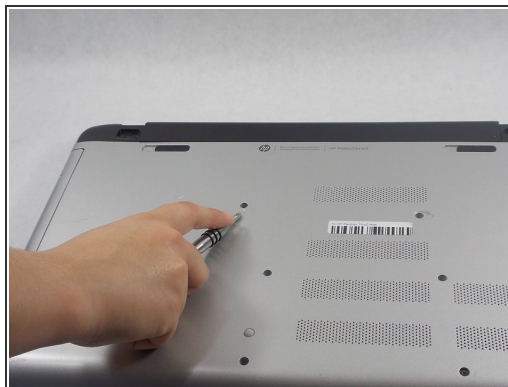
If you need to remove or replace the hard drive in your HP Pavilion 15-p214dx, this guide will show you how. Although a Phillips #0 screwdriver, a plastic opening tool, and possibly a flathead screwdriver are needed to open up the computer, removing the hard drive itself is as simple as disconnecting a couple cables and pulling the component out of the computer.



TOOLS:

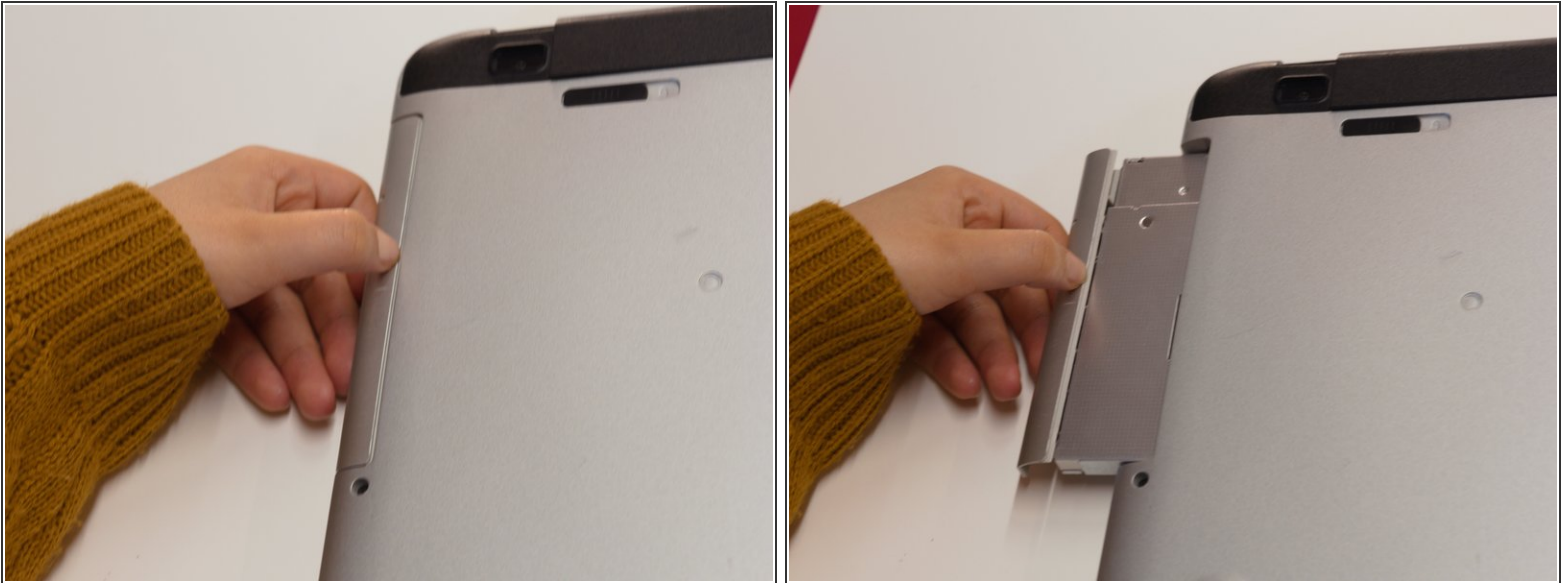
- [Phillips #0 Screwdriver](#) (1)
 - [iFixit Opening Tools](#) (1)
 - [Flathead Screwdriver](#) (1)
-

Step 1 — Disk Drive



- Place your laptop on a flat surface with the bottom facing upwards. The HP logo should be facing downwards.
- Locate the disk drive screw. It is a 7mm screw that can be found to the upper left on label on the bottom of the computer and is marked with a disk drive symbol.
- Remove this screw using a Philips #0 screwdriver.

Step 2



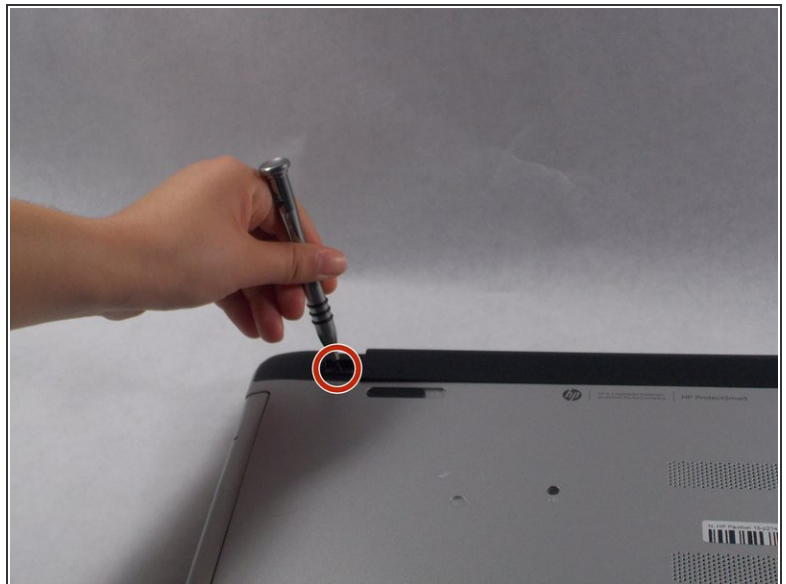
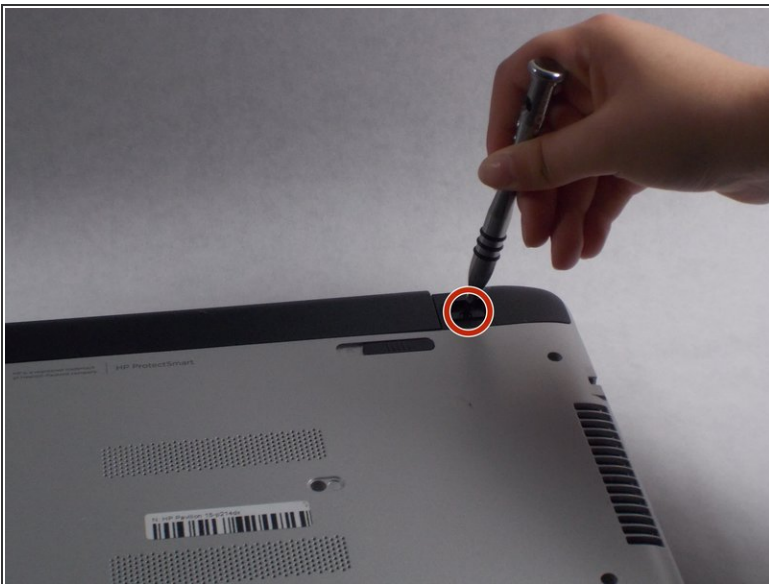
- Place your thumbnail between the disk drive exterior and your laptop's bottom cover.
 - ⓘ If your nail is not long enough to do this, you can use a prying tool instead.
- Pull outwards to slide the disk drive out of its slot.
 - ★ Due to how the disk drive's slot is constructed, the drive must be properly aligned to fit back in. It may take a couple attempts to properly align it.

Step 3 — Top Cover



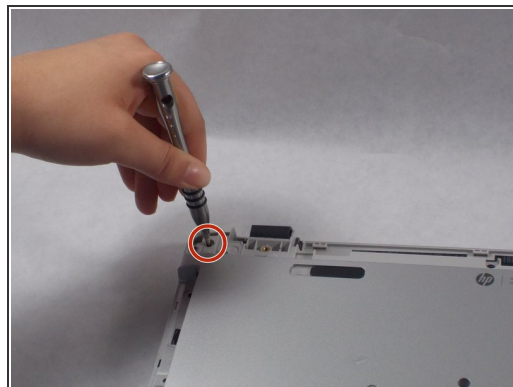
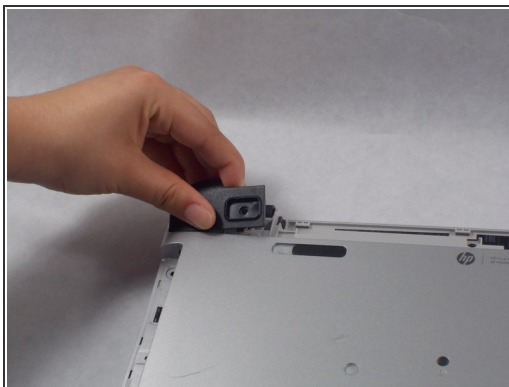
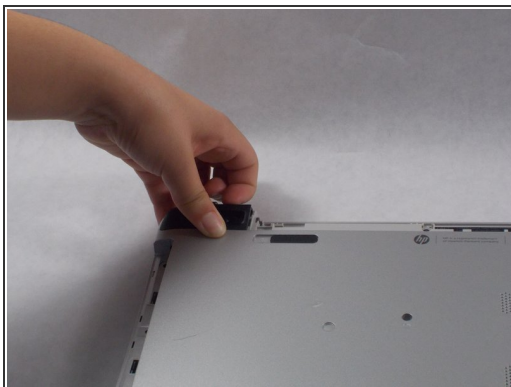
- Using a magnetic screwdriver with a Philips #0 head, remove all of the visible screws on your laptop's bottom face. These screws are all about 7.5mm long.

Step 4



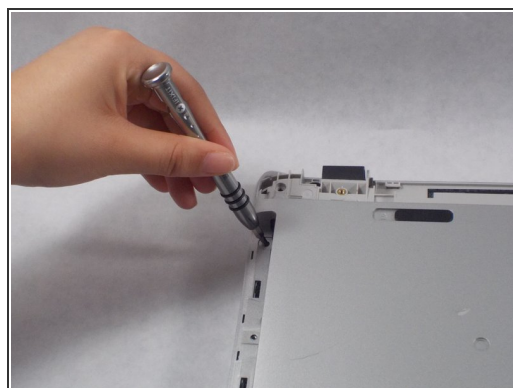
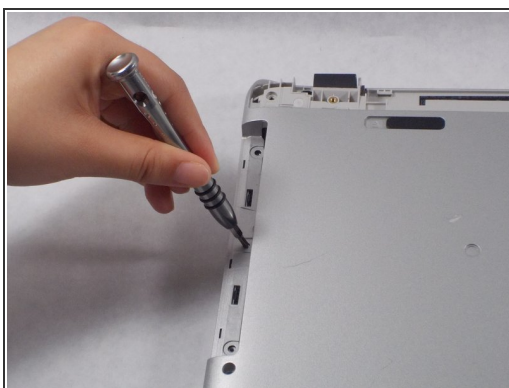
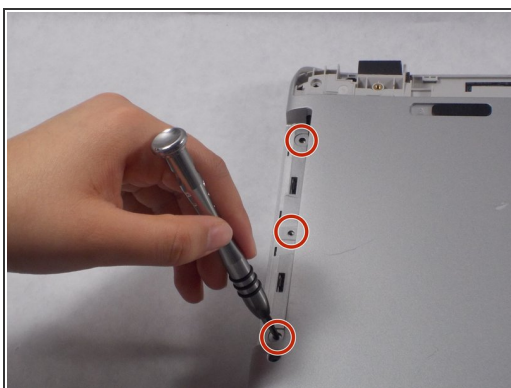
- Remove the 5.5mm screws holding the computer's end caps in place. The end caps are located to the left and right of the battery.
- ⓘ These screws are normally hidden underneath the end caps' rubber feet, which are not shown in the pictures. To remove these, gently pry them out of their slots with a plastic opening tool or a flathead screwdriver.

Step 5



- Lift both end caps from their respective corners.
- Use a Philips #0 screwdriver to remove the 4.3mm screw that is underneath both end caps.

Step 6



- Use a Philips #0 screwdriver to remove the three 5.5mm screws in on the edge of the disk drive slot.
- ⓘ These three screws are missing from the pictures.

Step 7



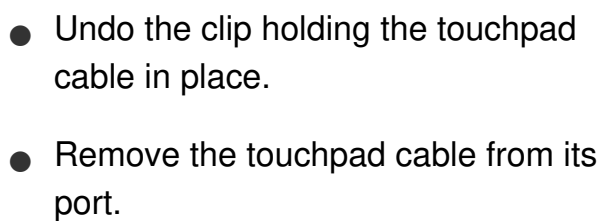
- Flip your computer so that the bottom is now on the surface. Open the laptop like you normally would if you were about to use it.
 - Use a plastic opening tool to separate the top cover from the bottom cover.
- ⚠ Be careful when prying the cover off since it is susceptible to bending and cracking.
- ⚠ There are several cables connecting the top cover to the computer's motherboard that need to be disconnected before the cover can be completely removed.

Step 8

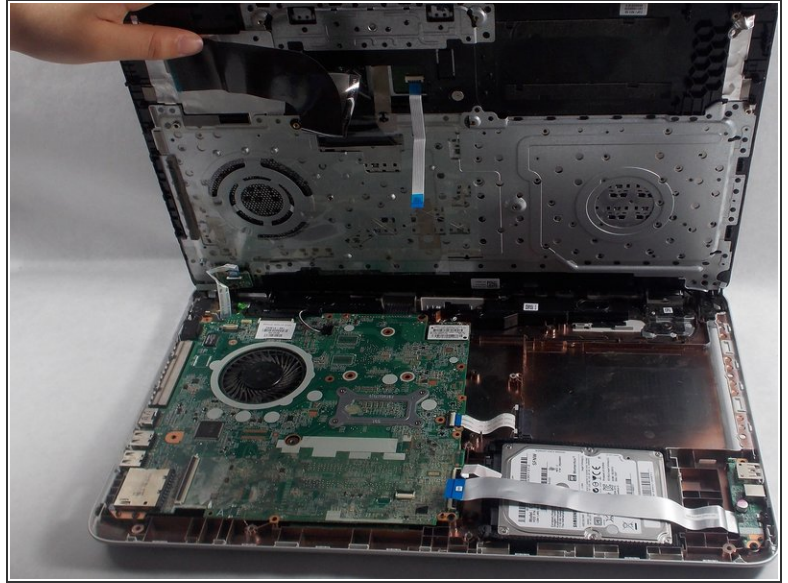
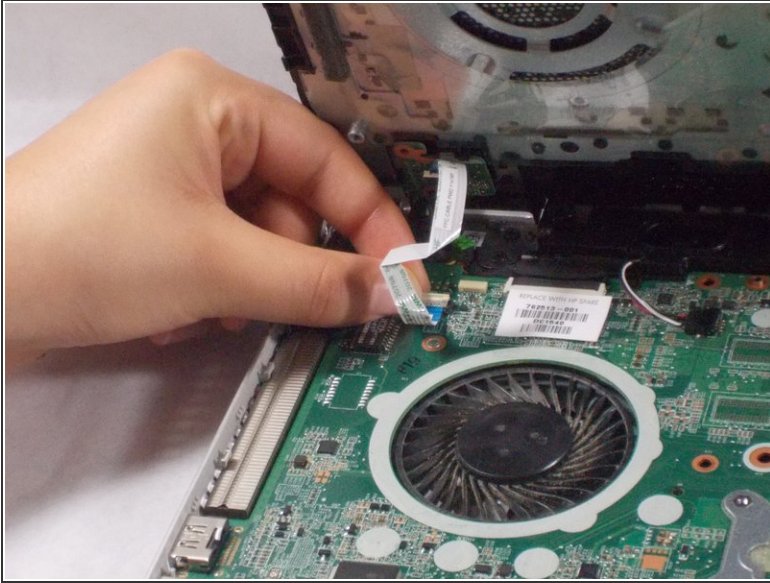


- While lifting the top cover, undo the clip holding the keyboard cable in place.
- Slide the cable out of its port.

Step 9

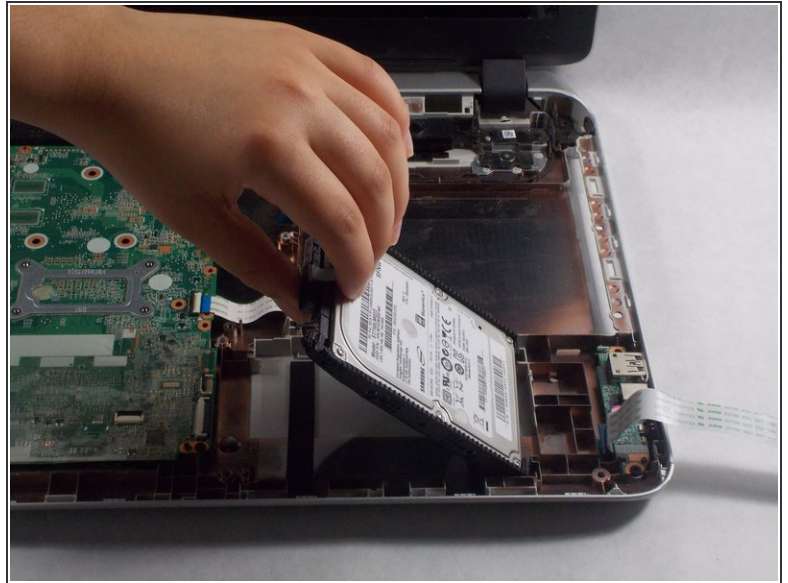
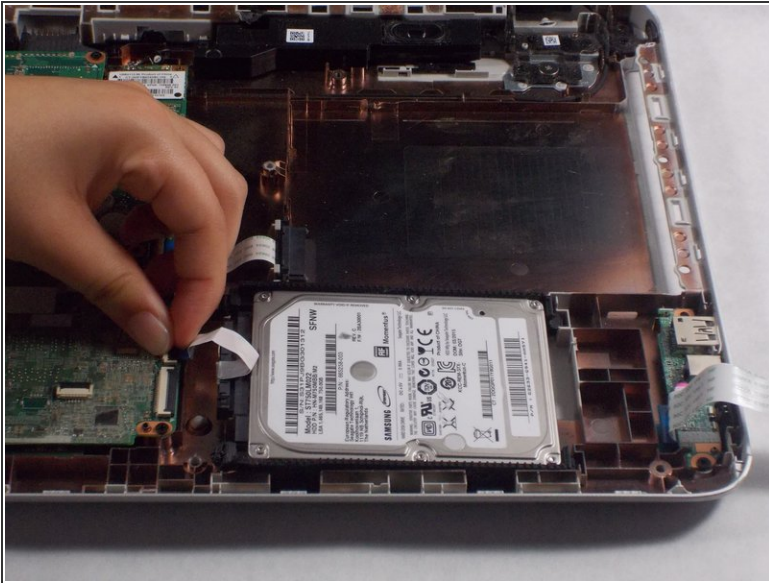


Step 10




- Undo the clip holding the power button cable in place.
- Disconnect the power button cable from its port.
- Gently lift the top cover to remove it from the computer.

Step 11 — Hard Drive



- Open the clip holding the USB connector cable in place, then slide the cable out of the clip.
- Open the clip that holds the hard drive cable in place, then remove the cable from that port.
- Tilt the hard drive so that it slopes down to the right, then pull it out of the computer.

 You should handle the hard drive carefully, since dropping, shaking, or exposing the drive to static can cause damage.

To reassemble your device, follow these instructions in reverse order.