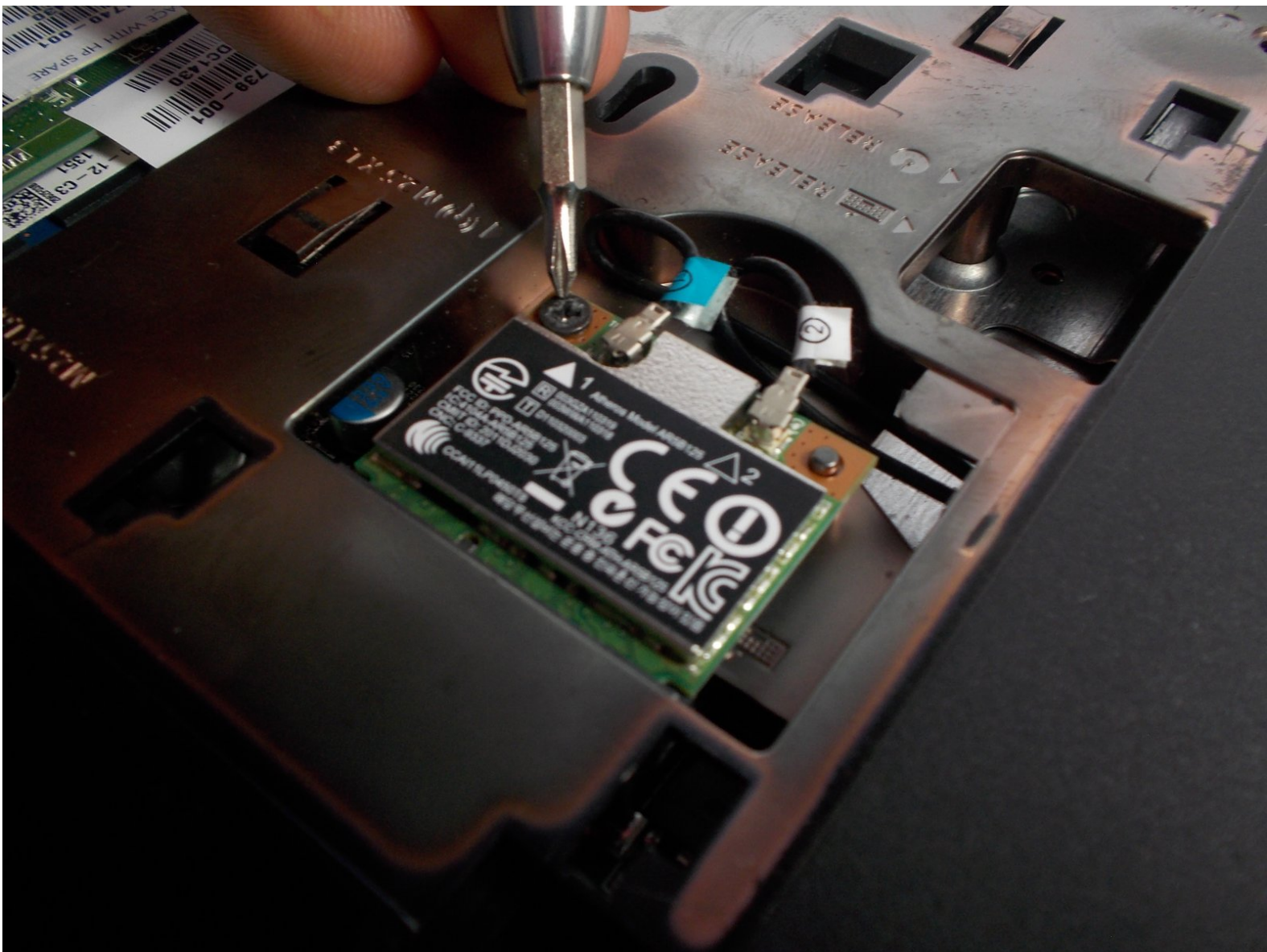




# HP Pavilion 17 TS Wireless Card Replacement

If you are having trouble connecting to the internet, replacing the wireless card is a last-resort type way to fix it. This is needed to be removed to get to other components however.

Written By: Sean Croft



---

## INTRODUCTION

The wireless card is what allows you to connect to the internet. It is a small component, but is still very important. This guide will show you how to replace it.

---



### TOOLS:

- [Phillips #1 Screwdriver](#) (1)
  - [Tweezers](#) (1)
-

## Step 1 — Battery



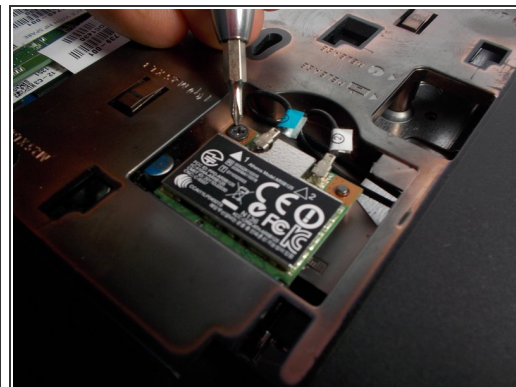
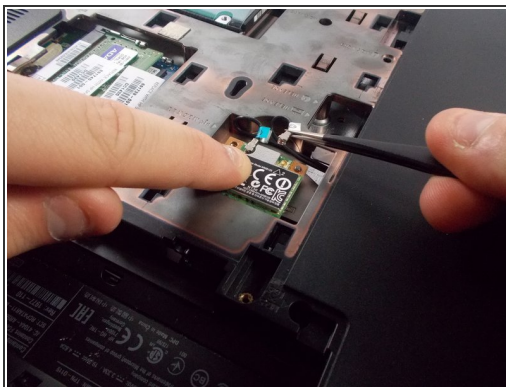
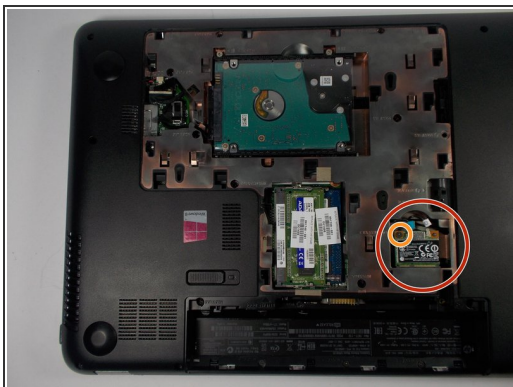
- Press and hold the release switch, and then slide the battery out. Insert the new battery into the slot and you're done!

## Step 2 — Rear Cover



- In the battery compartment, find the phillips screw that is holding the rear panel onto the computer. Unscrew it.
- With the battery compartment closest to you, push the panel away from you. Once it slides back until it stops, gently lift it and put it to the side.
- Please note that this particular screw does not completely come out, it stays with the rear panel and that is ok.

## Step 3 — Wireless Card



- Undo the two clips attached to the wifi chip by pulling up gently with a pair of tweezers.
- Unscrew the 9mm phillips screw holding the wifi chip in place.
- Gently remove the wifi chip from its socket and place it to the side.

To reassemble your device, follow these instructions in reverse order.