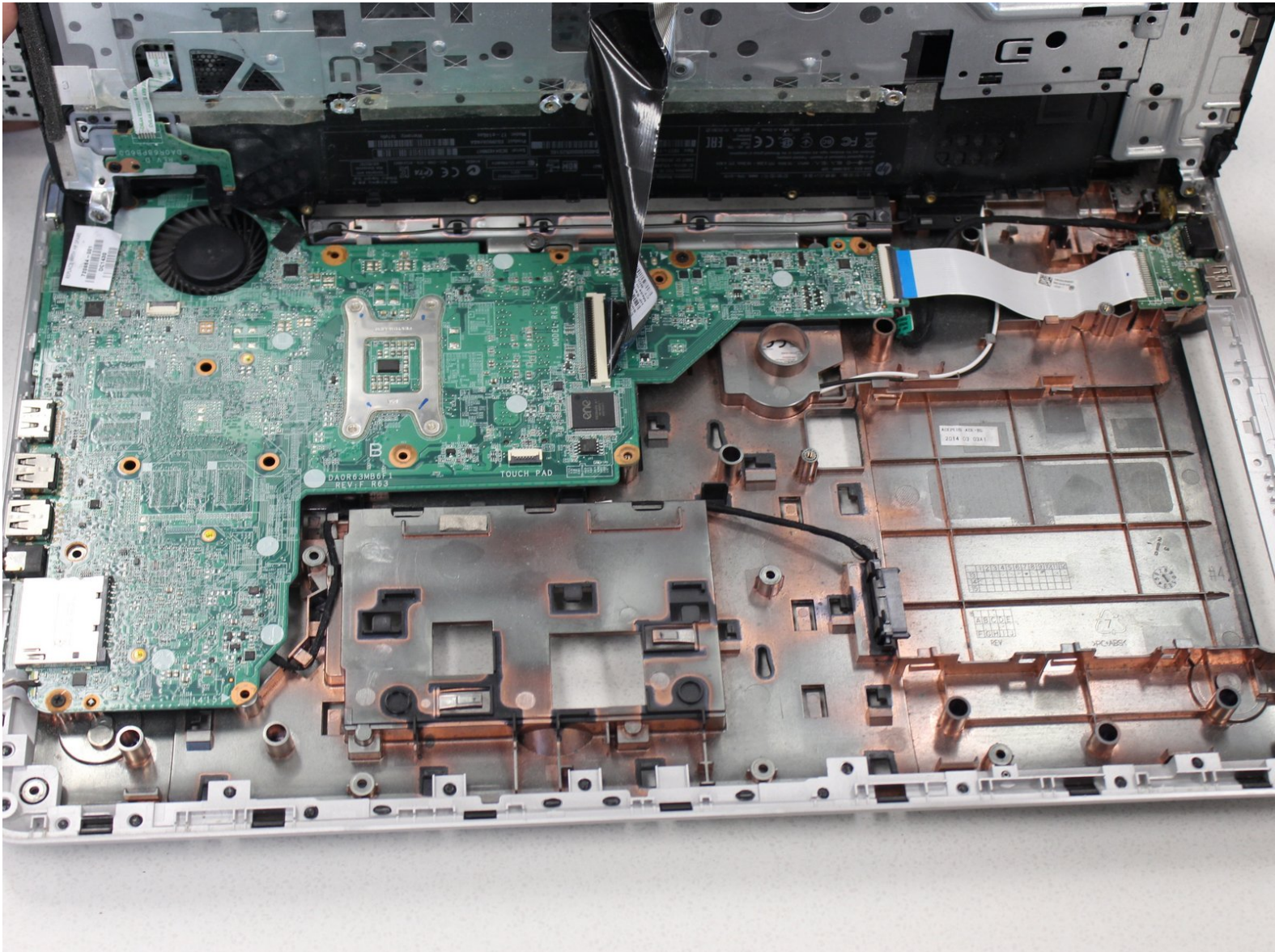




HP Pavilion 17-e146us Charger Port Replacement

Use this guide to replace a broken charger port in the HP Pavilion 17-e146us

Written By: Emma Neumann



INTRODUCTION

The charger port is the portion of the laptop that connects the power source to the battery of the laptop to charge it. Typically, this part of the laptop is used frequently and can wear to through is extensive usage. If this port does not work, the battery will not charge, and therefore the device will not turn on or hold power. This guide will show how to remove and replace a charger port with a new functional charger port. For more information on the effects a faulty battery port can cause please check out our [troubleshooting page](#). Please make sure the device is turned off and unplugged prior to starting.



TOOLS:

- [Spudger](#) (1)
 - [iFixit Opening Tools](#) (1)
 - [Phillips #0 Screwdriver](#) (1)
 - [Wedging Tool](#) (1)
 - [Tweezers](#) (1)
-

Step 1 — Battery



- Turn the device over.

Step 2



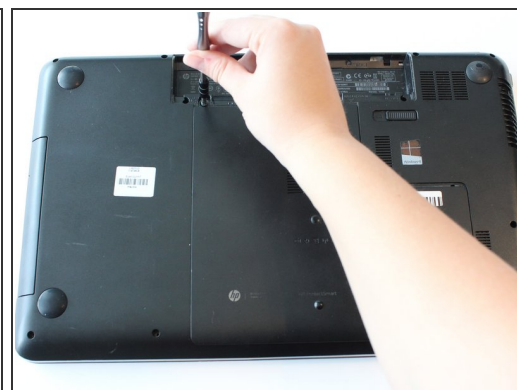
- Move the battery lock switch to the right to unlock. The battery release button will unlock the battery from the computer.
- The battery release button is located above the the battery.

Step 3



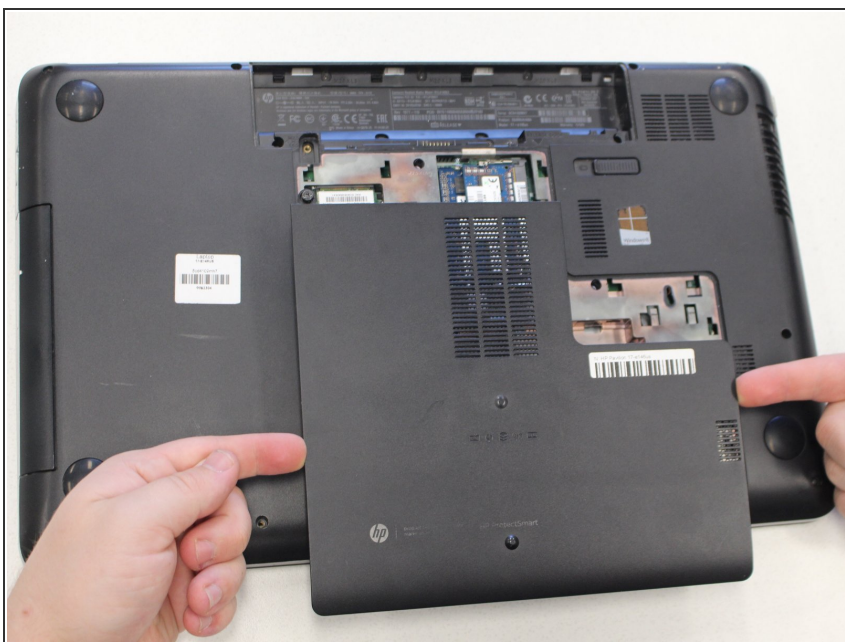
- The battery will unlock from the computer.
- Remove the unlocked battery from the computer.

Step 4 — Keyboard



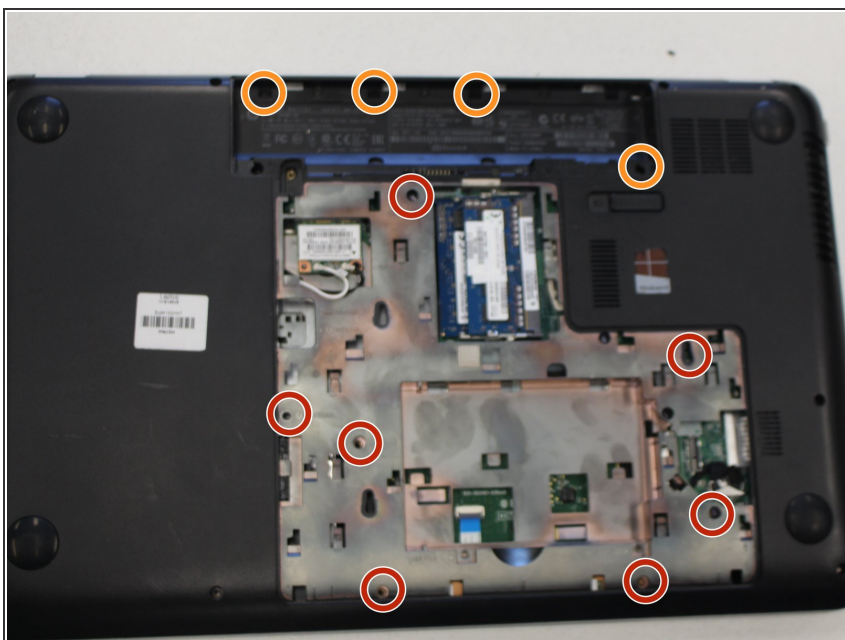
- Remove the 6.25 mm screw in the left-lower hand corner of the battery port using a Phillips head screw driver.

Step 5



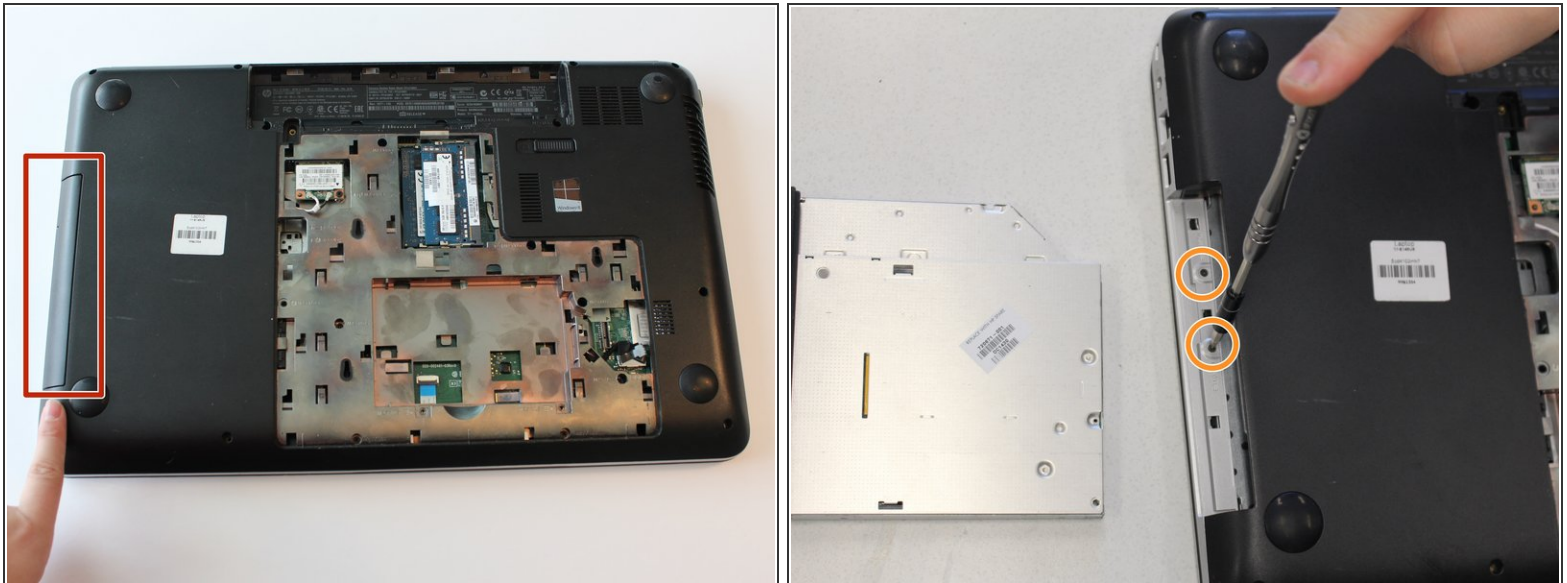
- Remove the HP protect smart ventilation case.
- ⓘ The smart ventilation is a part of the back cover of the device

Step 6



- Remove seven 6.5 mm screws using a Phillips #0 screwdriver.
- Remove four 3.0 mm screws located in the charger port using a Phillips #0 screwdriver.

Step 7



- Pull and remove the disk drive.
 - ⓘ The disk drive is located on the left side of the device when it is turned over.
- Remove two 3.00 mm screws on the inside of the disk drive using a Phillips screwdriver.

Step 8



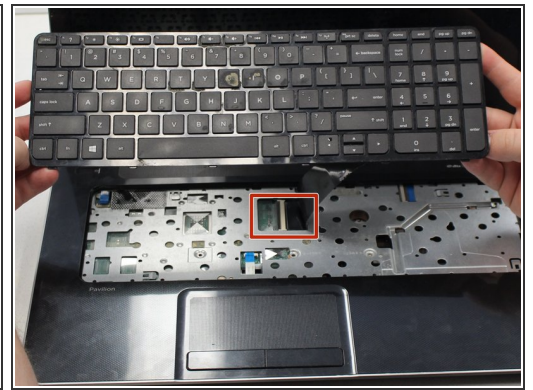
- Apply firm pressure inside the release port using a narrow tool such as a screw driver or tweezers.
 - ⓘ The release port releases the keyboard.

Step 9



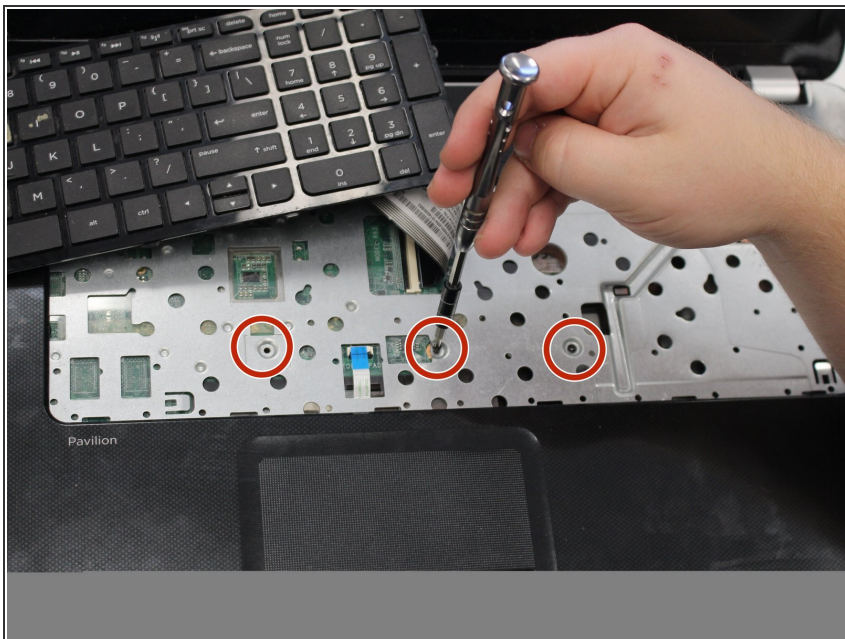
- Flip device over so that the cover is facing towards you

Step 10



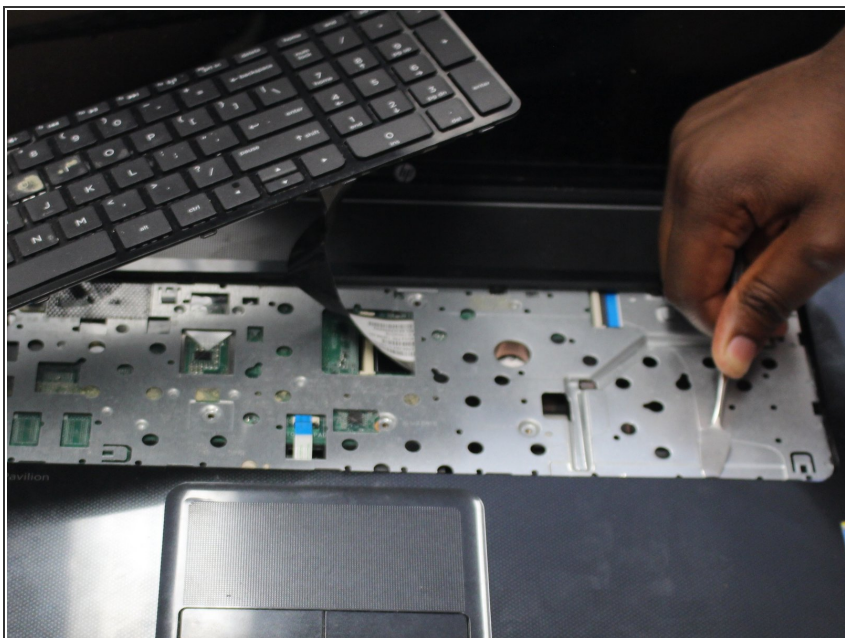
- Open device. The keyboard should be separate from the inside panel.
 - ❗ If the keyboard does not automatically pop out, use a spudger or opening tool along the edge of the front panel and the keyboard to pop the keyboard out.
- Detach the keyboard's cable connector from the motherboard.

Step 11 — Motherboard



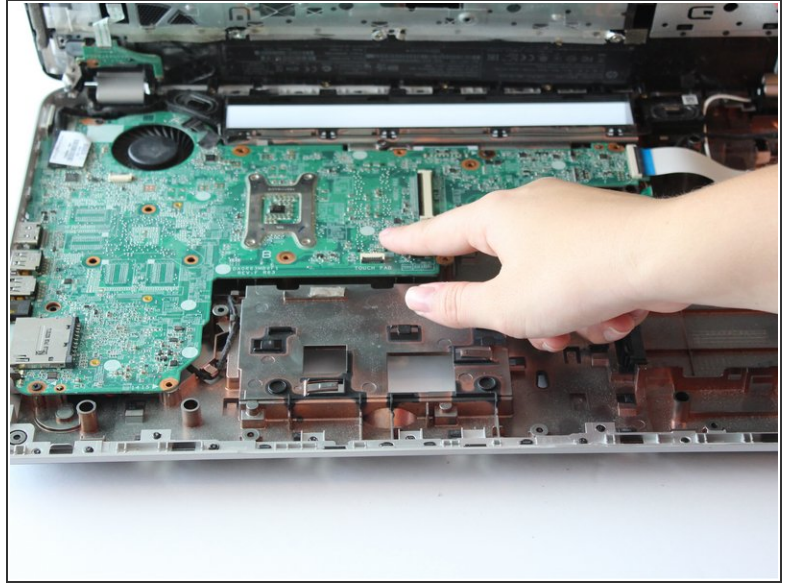
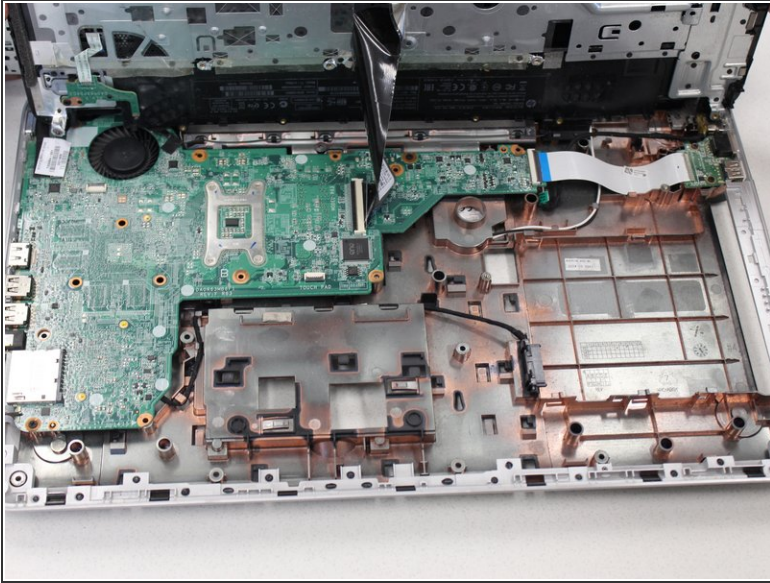
- Remove three 6.5 mm Phillips screws located underneath the keyboard using a Phillips #0 screwdriver.

Step 12



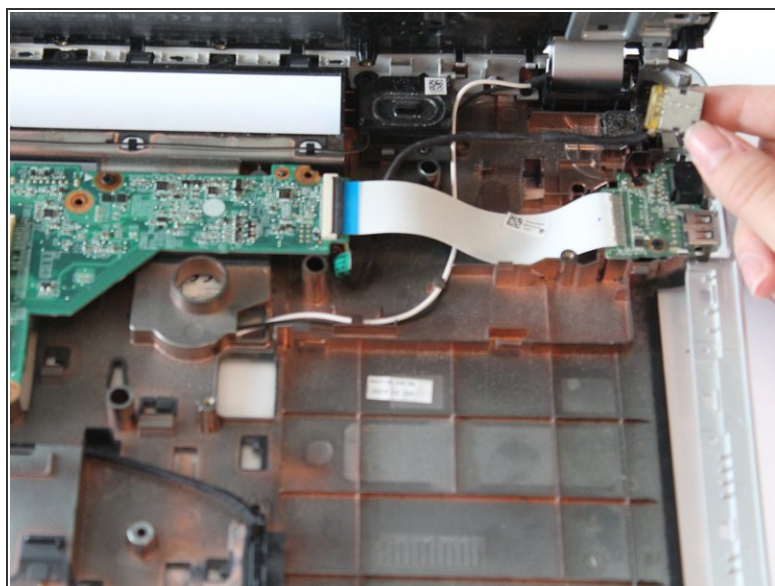
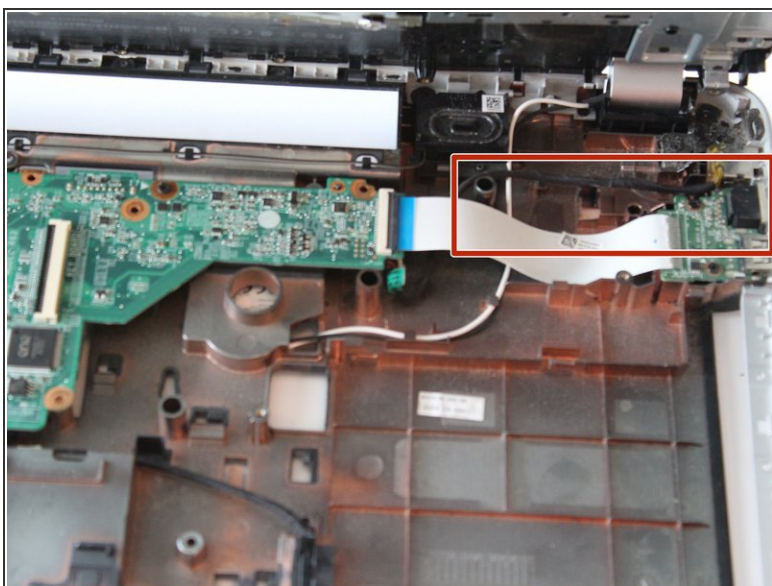
- Place wedge tool in-between the front panel and the cover underneath the keyboard
- Use wedge tool to pop the two covers apart.
- ⓘ This may require some force.

Step 13



- Remove the motherboard using your hands
- ① The motherboard is large green portion located inside the device

Step 14 — Charger Port



- The charging port is attached to the motherboard and is on the right side of the device if it is facing you.
- Remove the charging port from motherboard by hand.
 - ⚠ Be careful not to break the motherboard during removal

To reassemble your device, follow these instructions in reverse order.