



HP Pavilion 17-f004dx Hard Drive Replacement

This guide will show you how to replace your device's hard drive.

Written By: Allan Soria



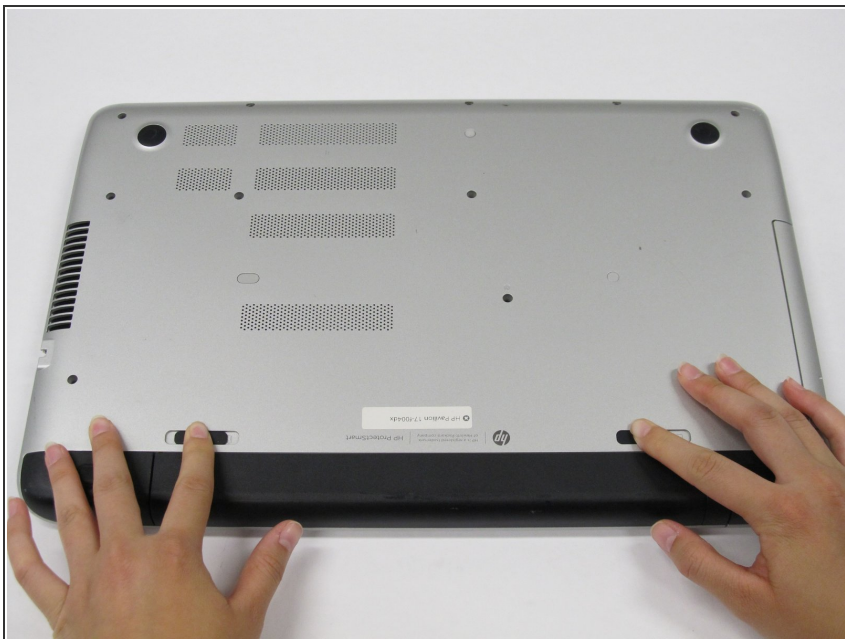
INTRODUCTION


The hard drive may malfunction if physically damaged or put under a lot of stress. Use this guide to replace it if the computer won't boot and or is displaying errors.

TOOLS:

- [Phillips #0 Screwdriver](#) (1)
 - [Phillips #1 Screwdriver](#) (1)
 - [iFixit Opening Tools](#) (1)
 - [T6 Torx Screwdriver](#) (1)
-

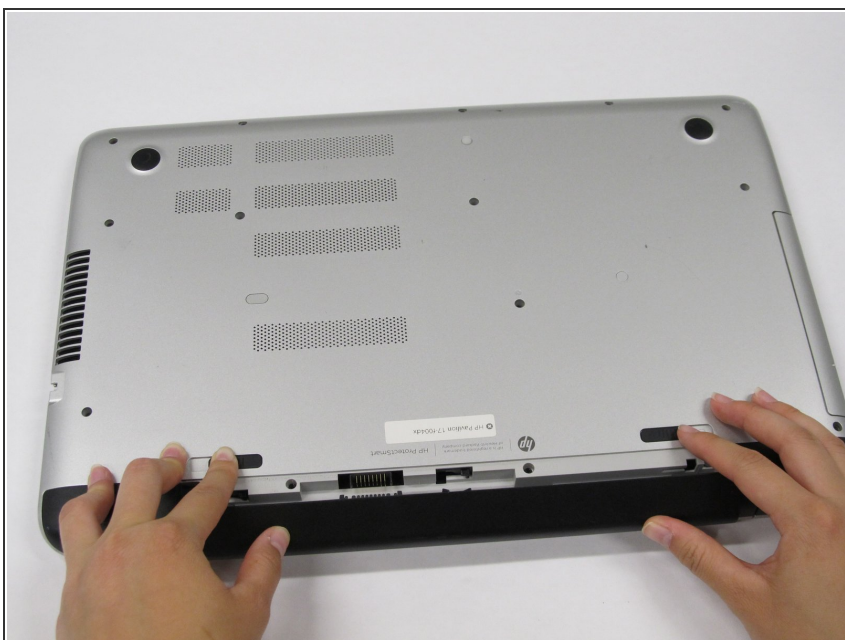
Step 1 — Battery



 Before you remove the battery, make sure the laptop is powered off.

- Slide the black battery latches inward to remove the battery.

Step 2



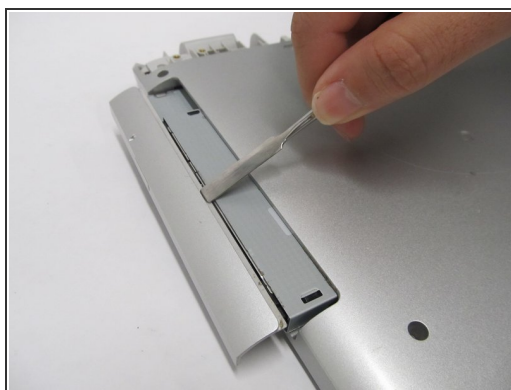
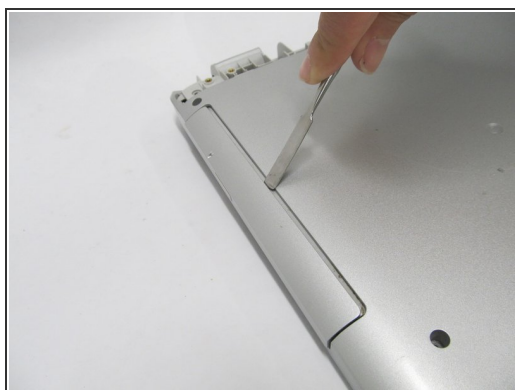
- Pull the battery out towards you while your fingers are still holding the latches in place.

Step 3 — CD Drive



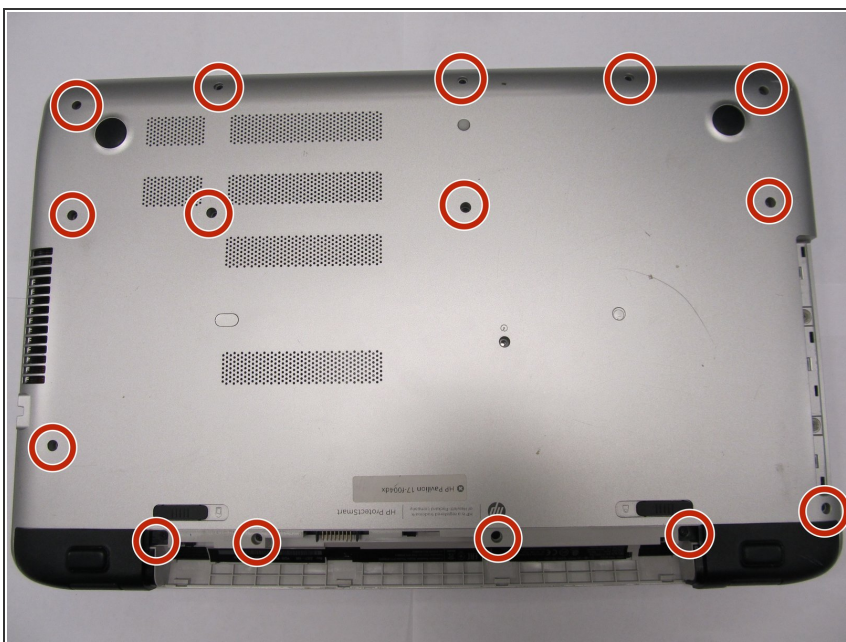
- Remove one 7 mm screw with a Phillips #1 screwdriver.

Step 4



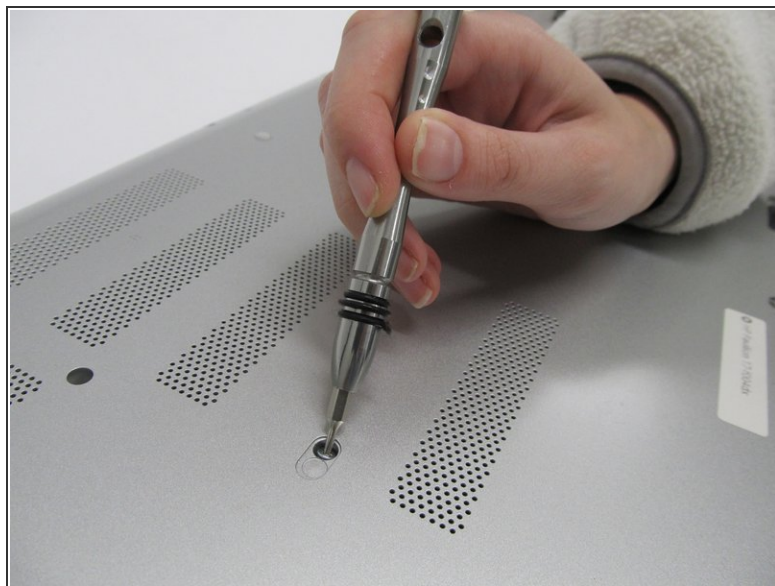
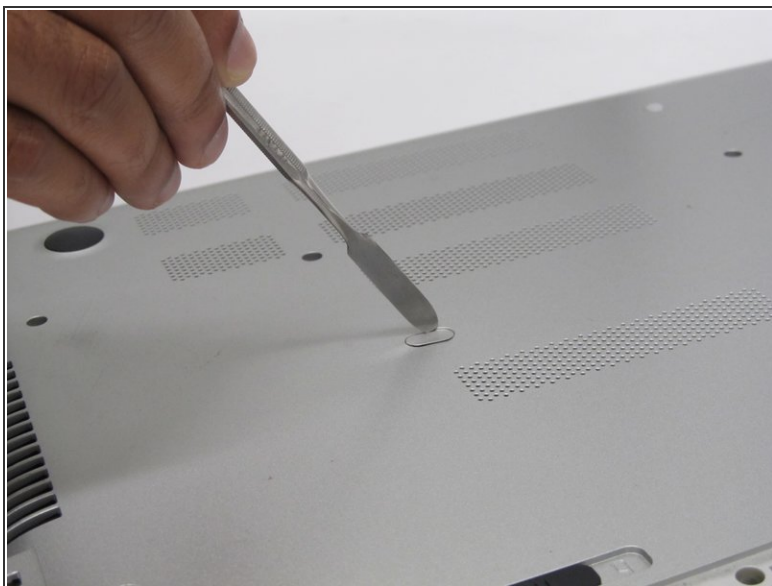
- Use a metal spudger to push the CD drive out of its slot for removal.

Step 5 — Front Panel



- Remove fifteen 7 mm screws with a Phillips #1 screwdriver.

Step 6



- Remove the thin plastic cover using the flat metal spudger to expose another screw.
- Remove one 7 mm screw with a Phillips #0 screwdriver.

Step 7



- Use a metal spudger to remove the rubber "feet" to expose two screws.

Step 8



- Underneath each rubber foot, there is a screw.
- Use the Phillips #1 screwdriver to remove a 4.8 mm screw on each side.

Step 9



- Remove the two black end caps to expose more screws.
- ⓘ The end caps will require some force to remove.

Step 10



- Remove the following six screws with a Phillips #1 screwdriver:
 - Two 7 mm screws.
 - Two 7 mm screws.
 - Two 4.8 mm screws.

Step 11



- Remove two 2.4 mm broadhead screws from the CD Drive bay with a Phillips #0 screwdriver.

Step 12



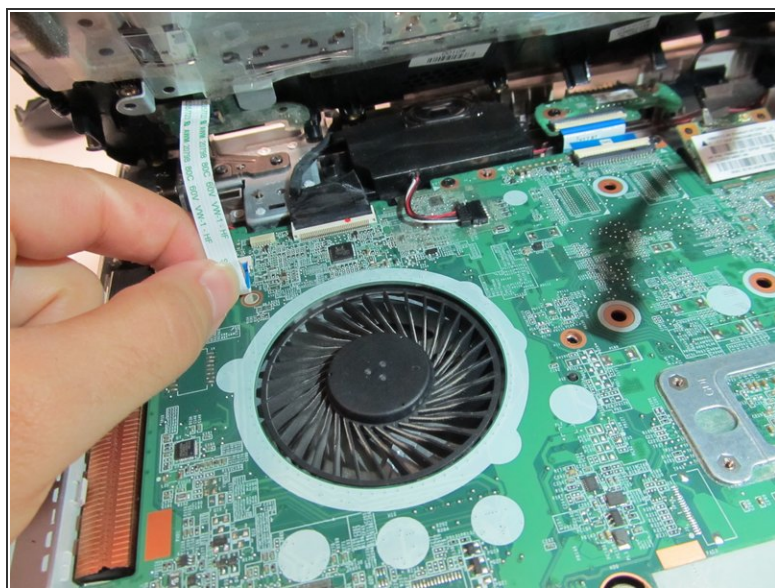
- Flip the laptop back over. Then, with the laptop open, move the plastic prying tool around the top cover to pry it from the enclosure.

Step 13



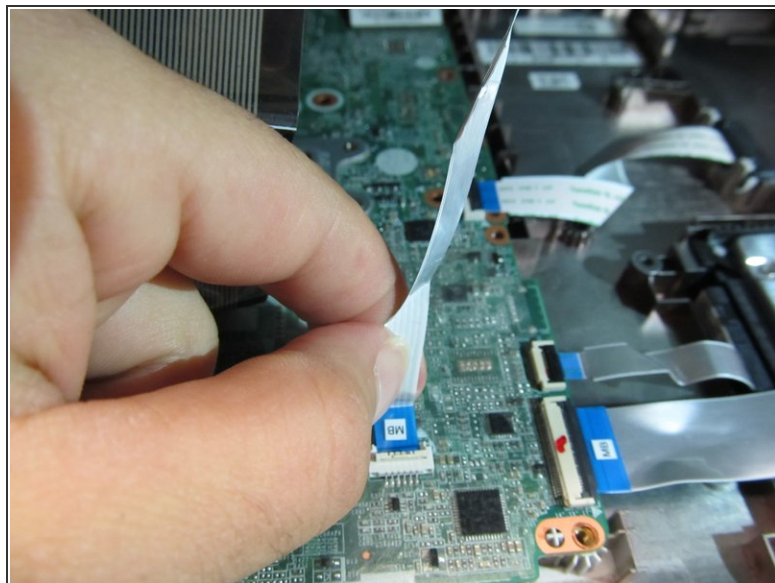
- Partially lift the top cover from the enclosure.

Step 14



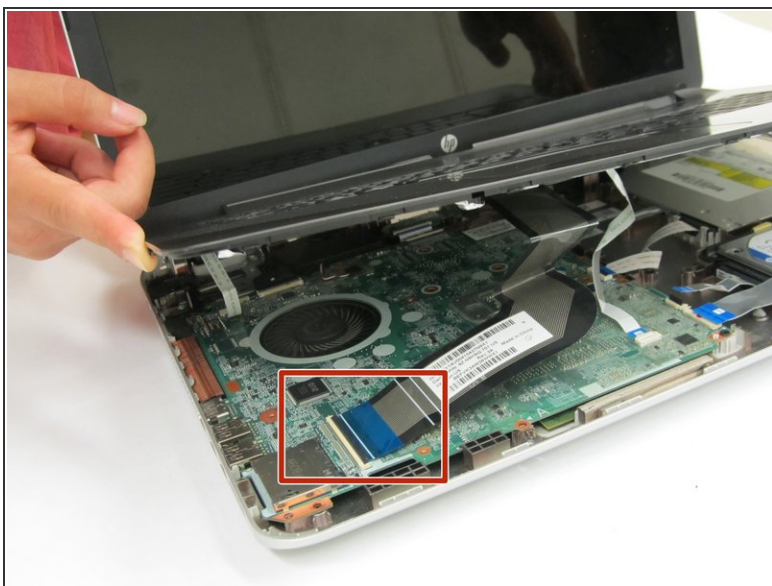
- Remove the ribbon connecting the power button to the motherboard.

Step 15



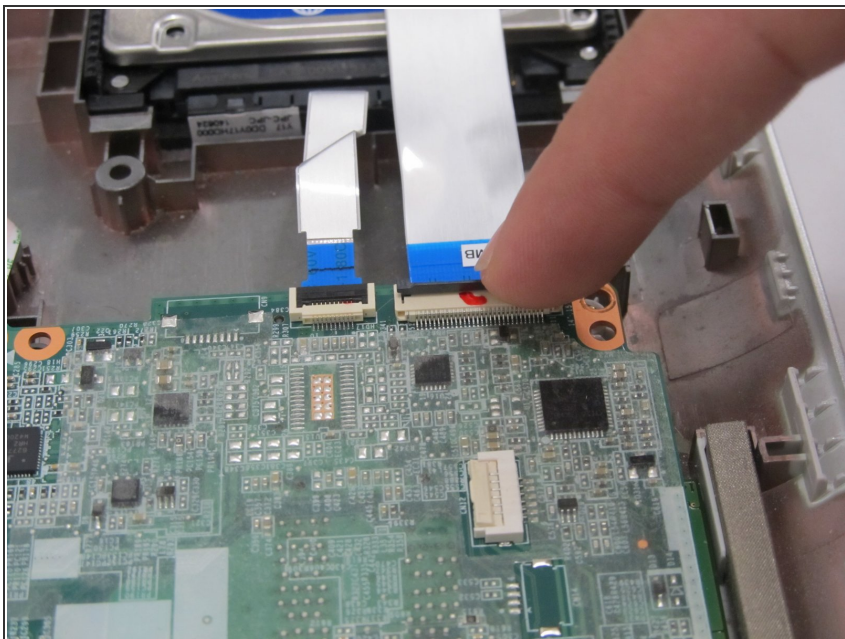
- Remove the ribbon connecting the mousepad to the motherboard.

Step 16



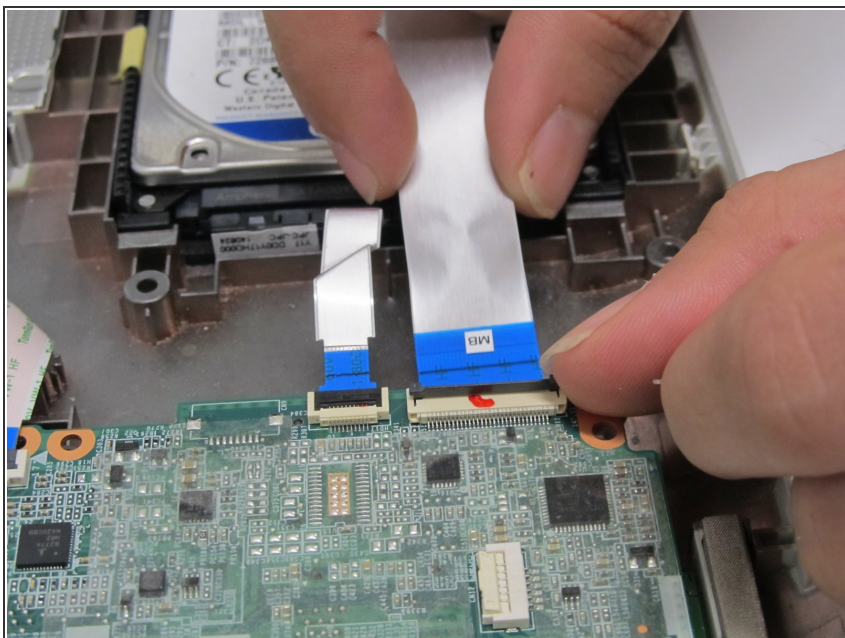
- Remove the ribbon connecting the keyboard to the motherboard.
- You may now fully lift the front panel from the rest of the laptop.

Step 17 — Hard Drive



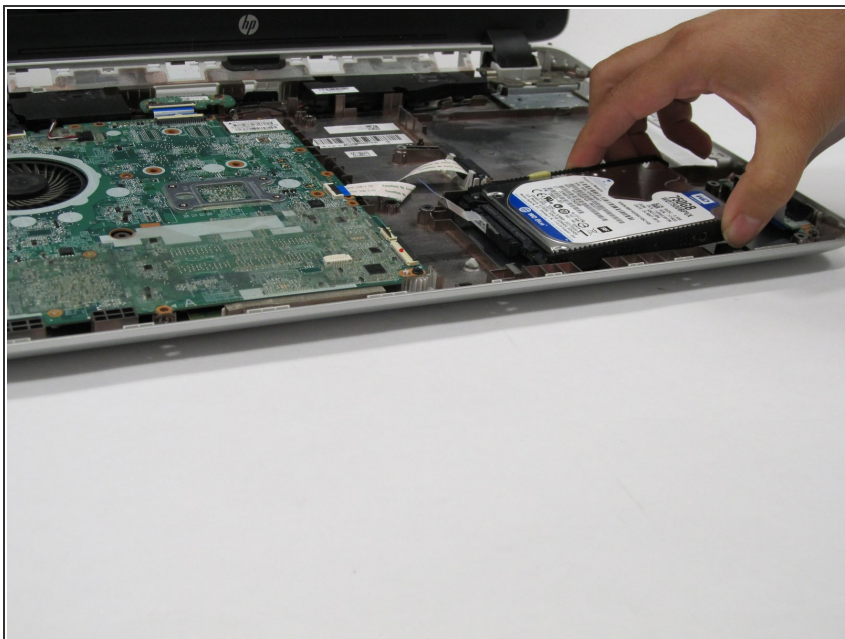
- Lift the black retaining bar that holds down the two hard drive ribbons to unlock them.

Step 18



- Gently pull the ribbons out.

Step 19



- Lift the hard drive out from the enclosure.

Step 20



- Pull the rubber casing away from the hard drive.

To reassemble your device, follow these instructions in reverse order.