



HP Pavilion DV2160BR Screen Replacement

This guide will aid in replacing a broken, cracked, or mis-functioning display on the HP Pavilion DV2160BR.

Written By: Michael



INTRODUCTION

Use this guide to replace a broken display assembly.



TOOLS:

- [Phillips #0 Screwdriver](#) (1)
 - [Spudger](#) (1)
 - [Phillips #1 Screwdriver](#) (1)
 - [iFixit Opening Tools](#) (1)
-

Step 1 — Battery



- Start with the bottom of the laptop facing up.

Step 2



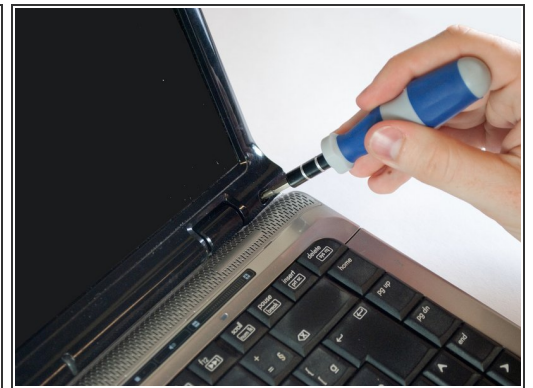
- Locate the battery compartment at the rear of the device.
- There is a slider button located under the left side of the battery compartment. It is indicated by a battery symbol. Move the slider to the left and lift the battery out.

Step 3 — Screen



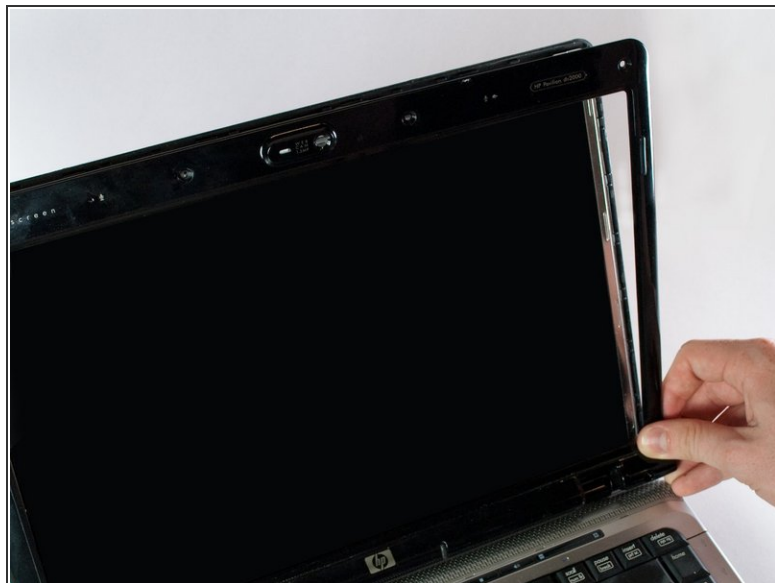
- Start with the laptop sitting up and in the open position.

Step 4



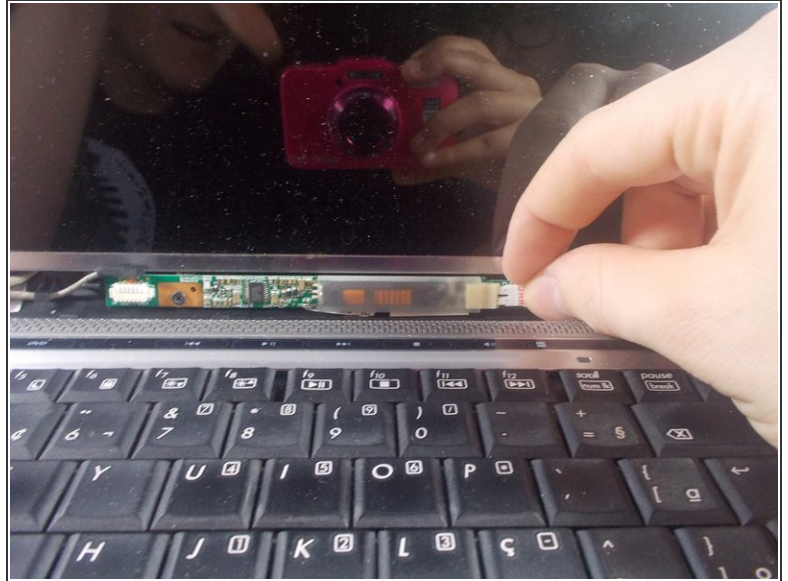
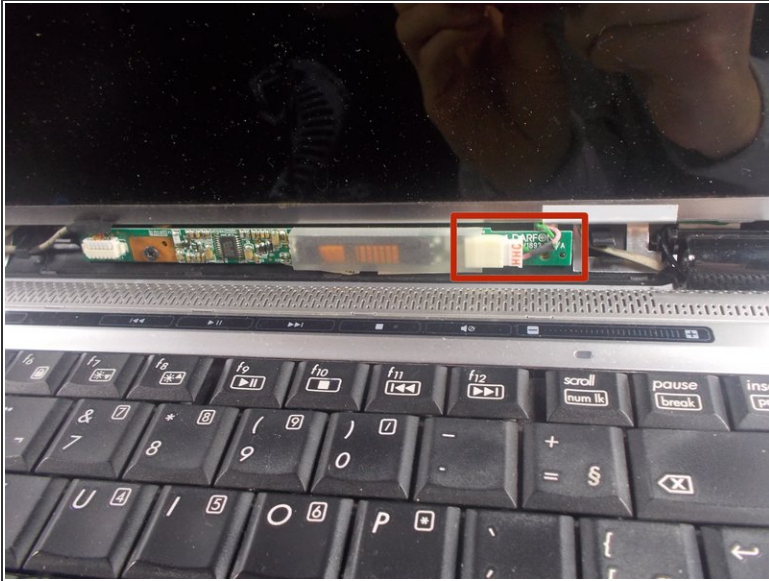
- Remove the 6 rubber screw covers and screws, found around the edge of the laptop screen, surrounded in red and blue.
- Use the plastic opener tools to remove the screw covers. Just apply firm pressure to the edges to pop the screw covers out, they are attached with a light adhesive.
- There are four 2.5mm X 4mm-L Phillips #0 screws along the top.
- There are two 2.5mm X 8mm-L Phillips #1 screws along the bottom.

Step 5



- Now we must remove the plastic panel.
- Slide a plastic opener tool along the outside edges of the front screen panel, separating it from the screen. You may need to apply some firm pressure.
- Once the panel is separated from the screen, gently pull it off and set it aside.

Step 6



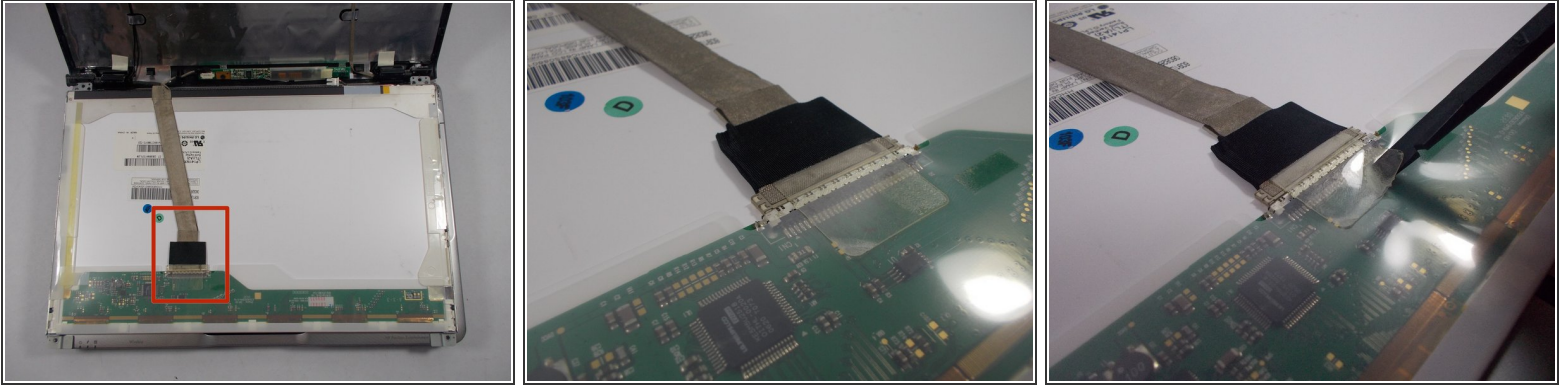
- Locate the inverter at the bottom of the screen.
- Disconnect the back light plug cable on the right side of the inverter by holding the inverter in place and pulling firmly on the connector.

Step 7



- Now remove the final four screws holding the screen in place.
 - Remove the four 2.5mm X 6mm-L Phillips #0 screws from the lower left and right hand sides of the screen.
- ⚠ Be aware that the screen is now loose and can fall backwards.

Step 8



- Remove the screen from the back screen panel.
- Set the screen facing down gently onto the keyboard.
- Now that the screen is placed face down onto the keyboard we are going to remove the wire connecting the screen to the device.
- The wire is held on by an adhesive tape that must be lifted with the spudger tool.
- Once the tape is lifted, slide your finger under and gently pull up the rest of the tape to free the wire.
- Gently pull the wire towards the back of the device and the screen will now be free.

Step 9



- Finally we must remove the metal mounting hardware attached to the screen.
- Remove the six 2mm X 3mm-L Phillips #0 screws.
 - There are three on each side of the display
- Set aside the metal hardware and your display is now separated from the device!

To reassemble your device, follow these instructions in reverse order.