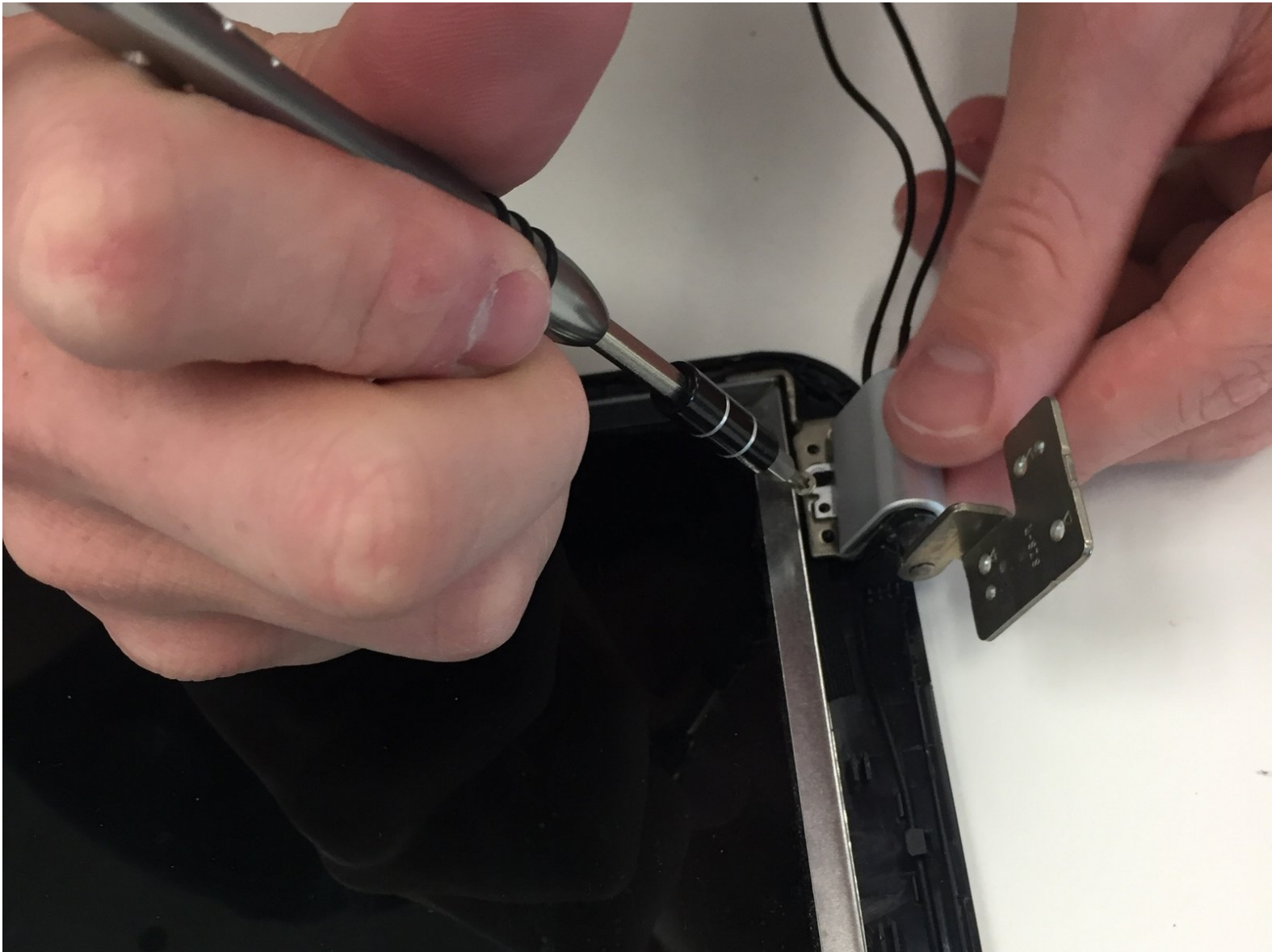




HP Pavilion G6-1d16dx Screen hinges Replacement

One or both of the hinges has snapped or broken

Written By: Calvin Kerr



INTRODUCTION

If, for whatever reason, your computer just won't close/open correctly, you could have a faulty screen hinge. This guide walks users through the process of accessing/replacing the screen hinges.

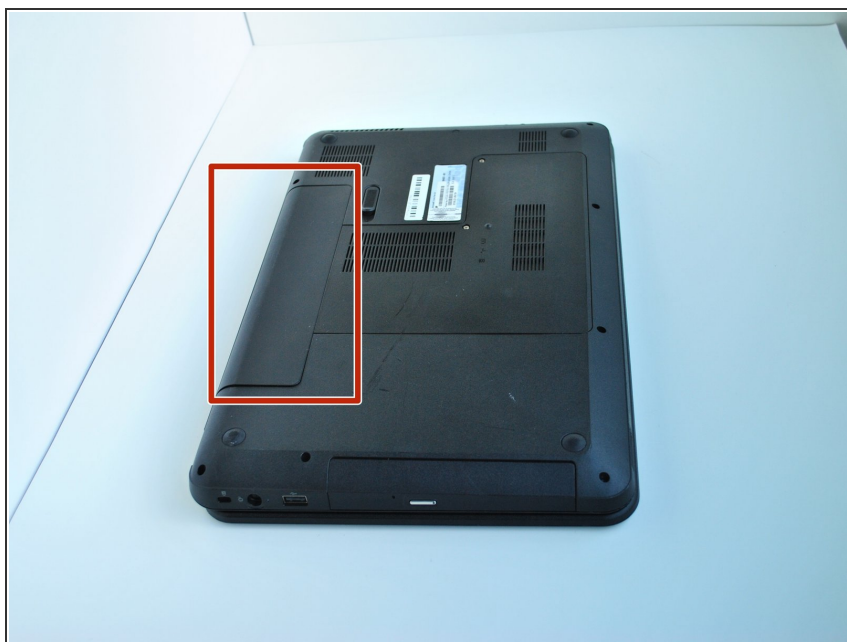
Note: Ignore removing the motherboard screws in step 10 of this guide.



TOOLS:

- [Phillips #0 Screwdriver](#) (1)
 - [Slip Joint Pliers](#) (1)
-

Step 1 — Battery



- Flip the computer so that the bottom side is facing up, and locate the battery above the screen hinges.

Step 2



- Slide the switch under the battery compartment to release the battery.

Step 3



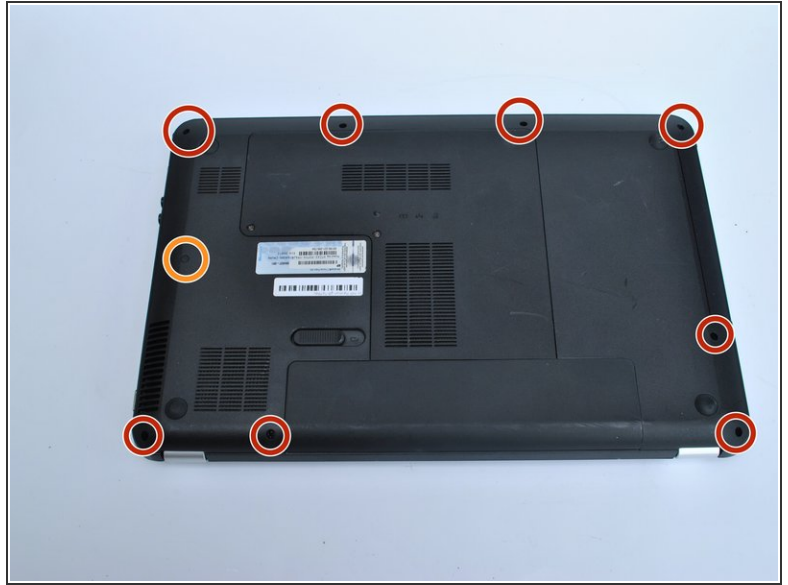
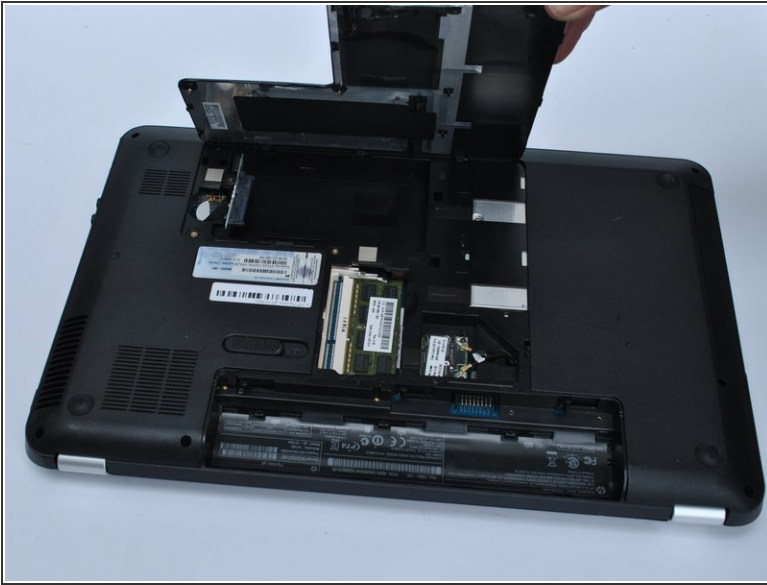
- The battery will pop out above the latch; now remove the battery.

Step 4 — Motherboard



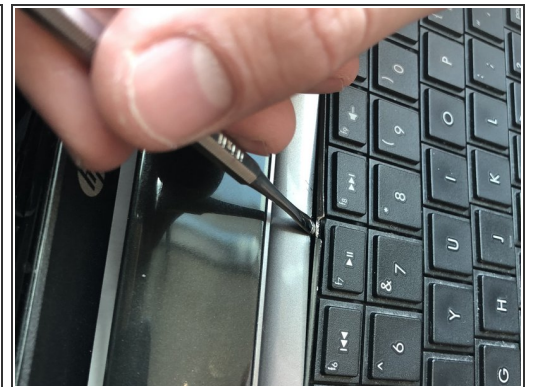
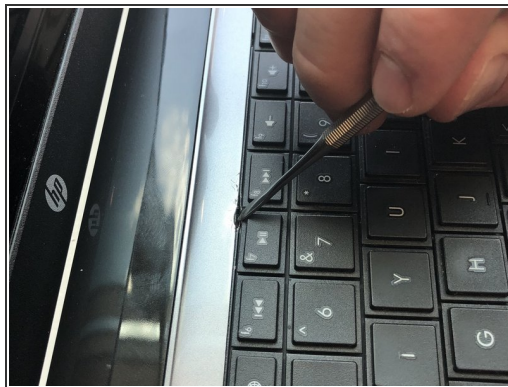
- Unscrew the two silver screws holding the protective cover in place until they make a clicking noise.
- ⓘ The screws do not remove from the cover.

Step 5



- Unsnap the Cover by lifting the edge along the battery compartment.
- Remove all of the body screws.
- Take note to remove the rubber cap and the screw underneath it.

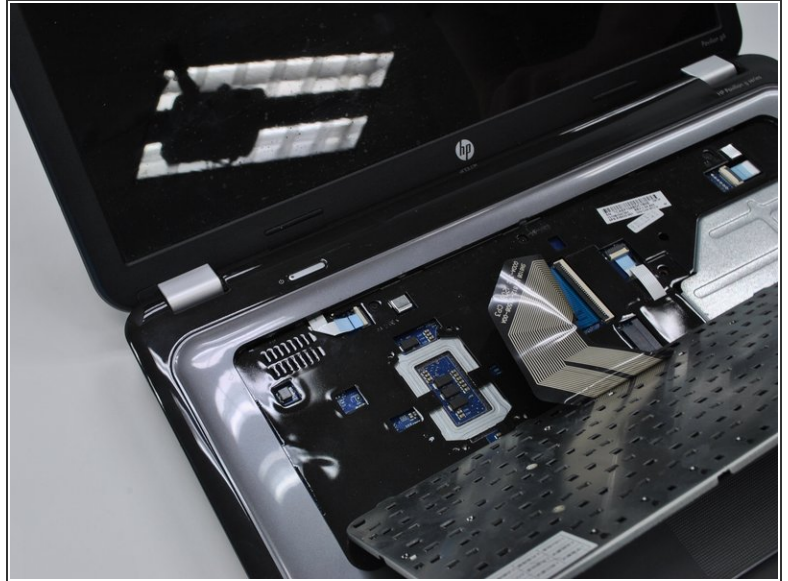
Step 6



i The keyboard is held in by nine tabs

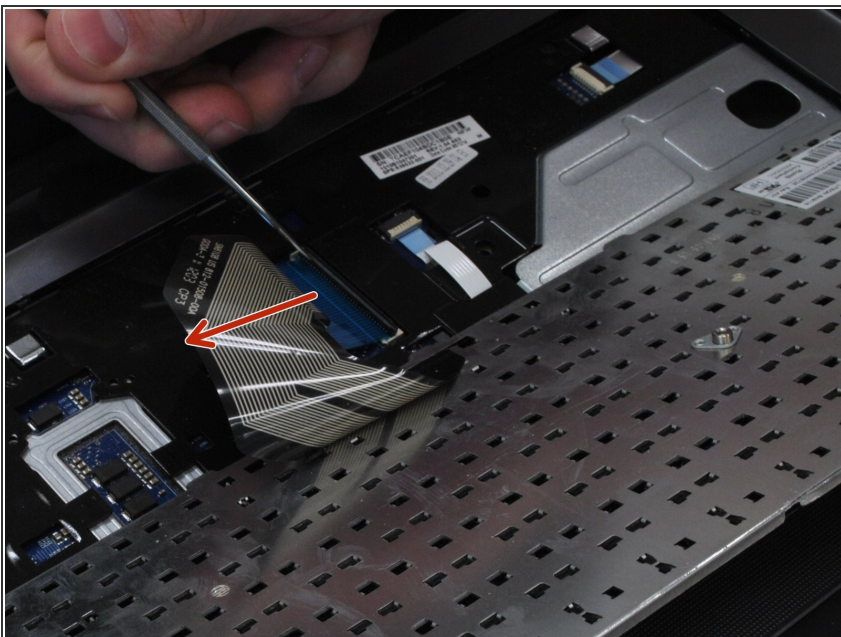
- Take a metal tool and depress the center tab and pry up the keyboard by pivoting the tool towards the screen.

Step 7



- Slide the tool that is now under the keyboard sideways along the edge and use another tool to depress the other tabs along the edge of the keyboard.
 - ⓘ As you depress the tabs, the edges of the keyboard will pop up.
- Lift off the keyboard

Step 8



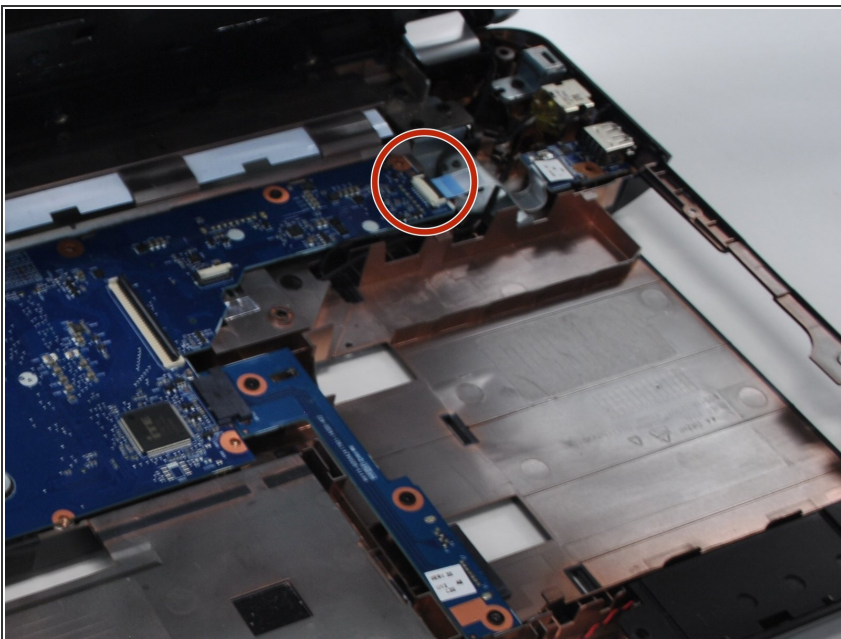
- Flip up the black tab holding the keyboard in place via the ribbon cable and pull out the cable

Step 9



- Remove the two remaining ribbon cables.
 - Remove the screws holding in the protective cover underneath the keyboard.
 - Pop the cover off, starting with where you took out the optical drive
- i** It will be very sticky near the edge closest to the screen. This is where the sticker in the battery compartment is stuck to. just use a little more force.

Step 10



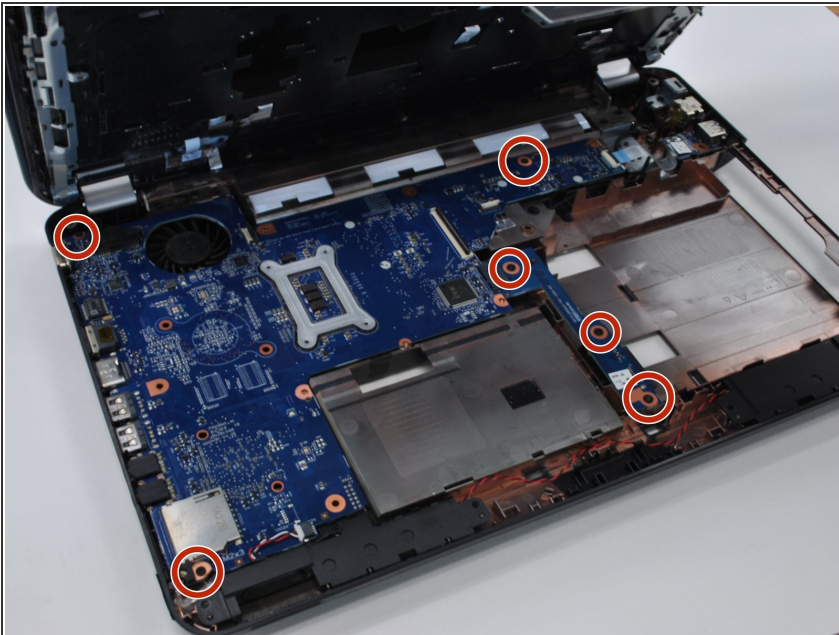
- Unplug the ribbon cable on the right side of the motherboard.

Step 11



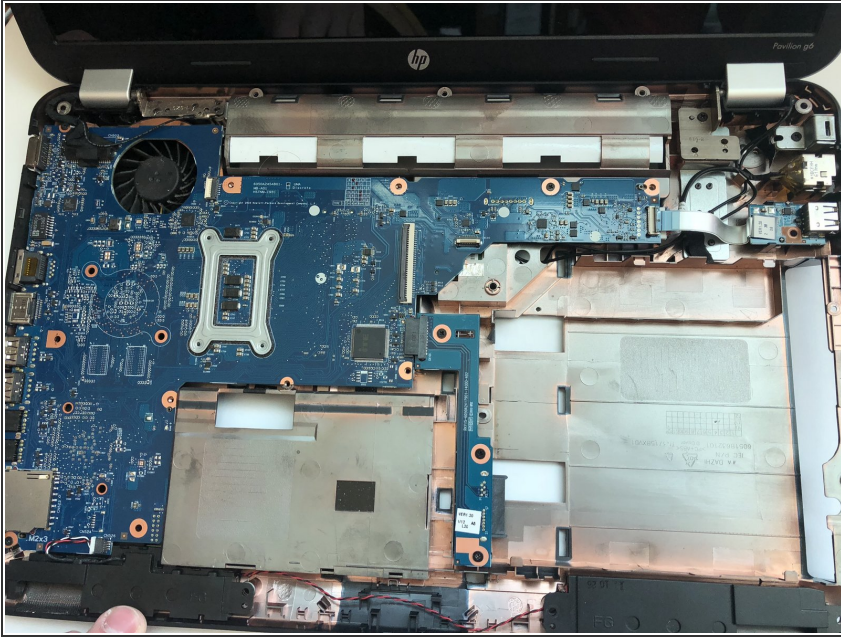
- Underneath the computer, unscrew the hard drive connector screw, and pop out the hard drive plug in.

Step 12



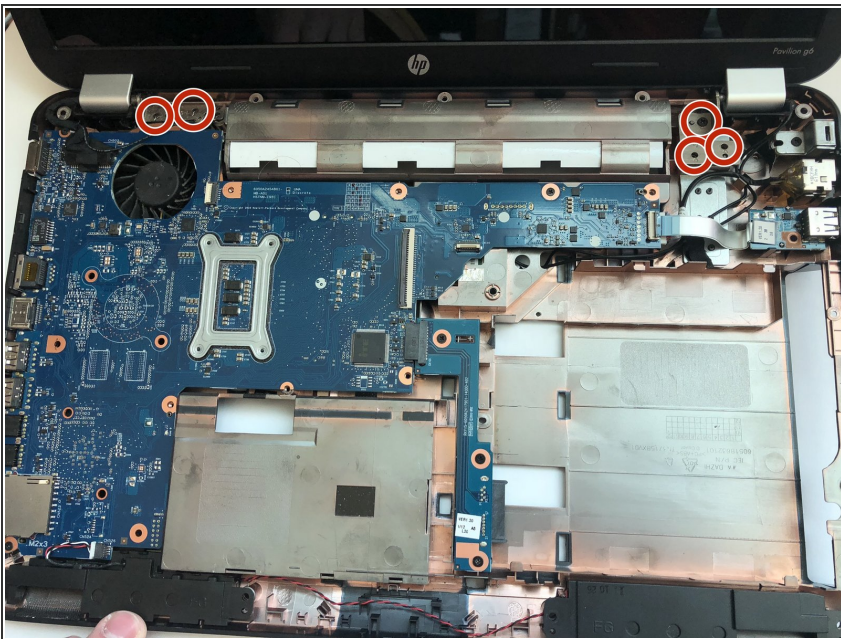
- Unscrew all mother board screws and lift the motherboard out of the body.
- ☑ For replacing the screen hinges and screen, skip this step

Step 13 — Screen hinges



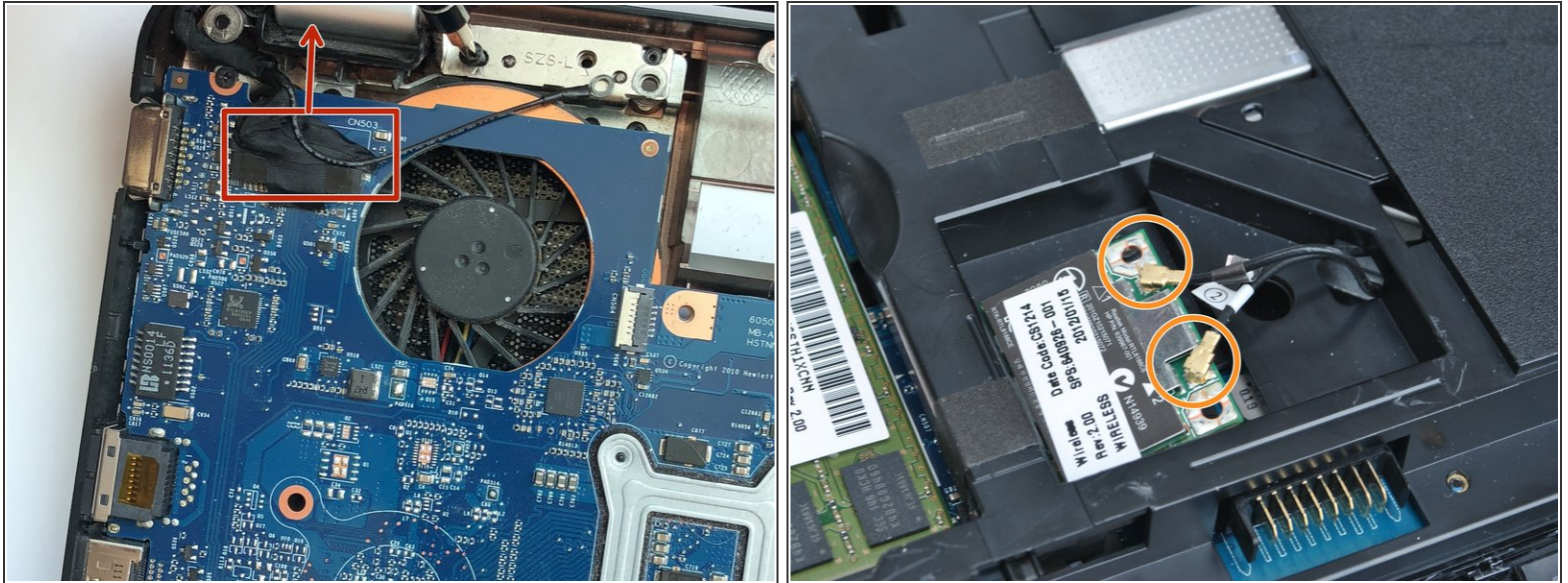
 **Ignore the motherboard screws.**

Step 14



- Remove the five screws holding hinges to base.

Step 15



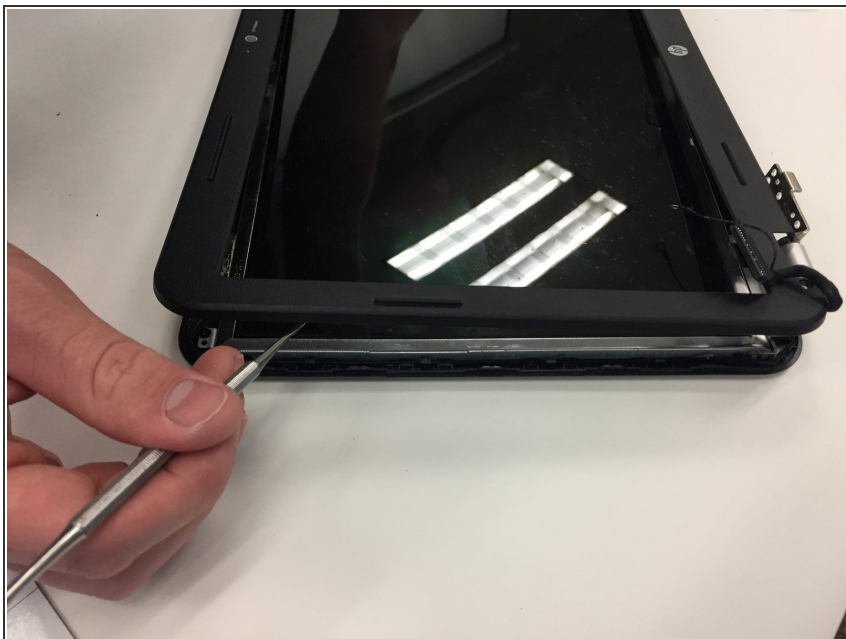
- Lift tape tab up from screen plug, and unplug the screen from the motherboard.
- Unplug wires from wireless card and pull them through the body.

Step 16



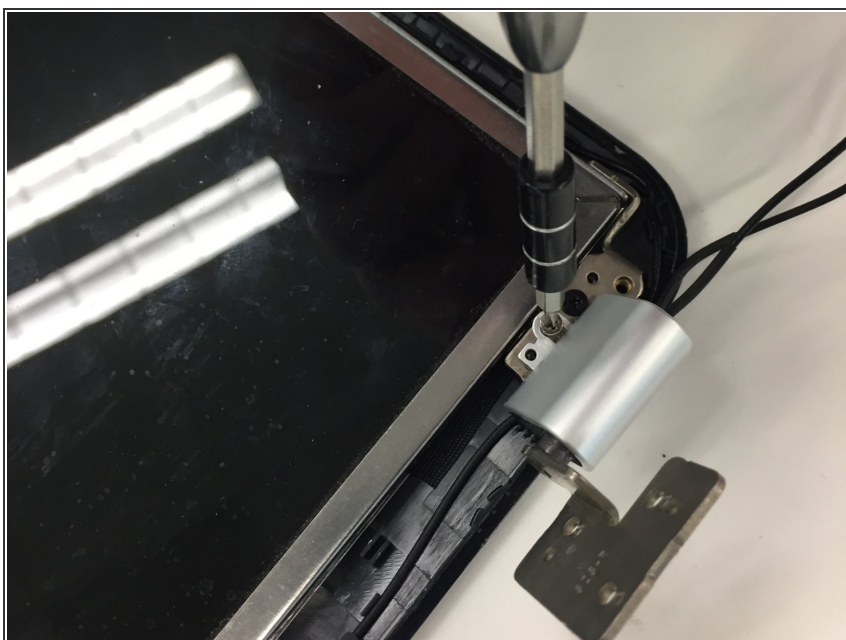
- Remove sticky tabs on bottom of screen just outside the hinges, and remove the two screws underneath.

Step 17



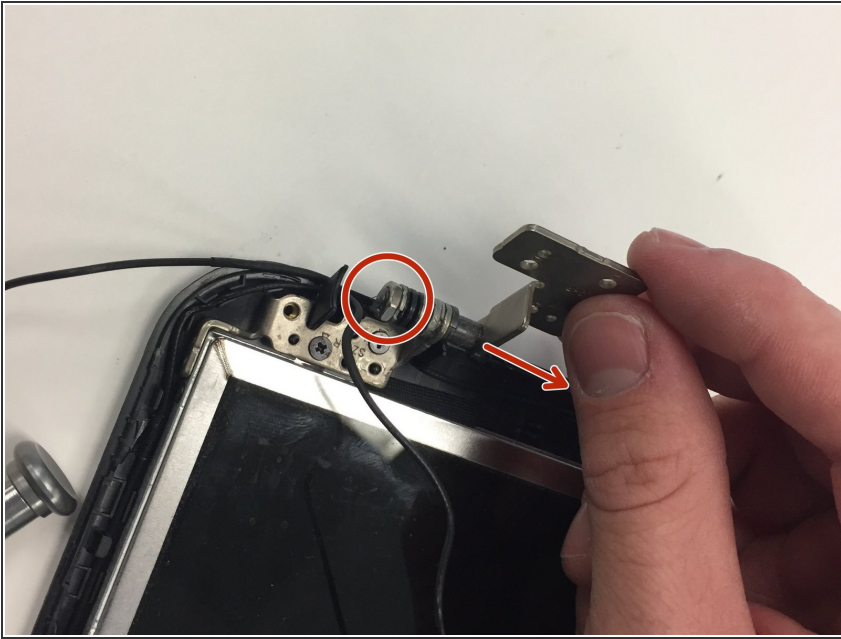
- Pry off plastic surrounding screen with any flat metal tool.

Step 18



- Remove screws holding the hinge covers in place.
- Remove the covers.

Step 19



- Use a pair of pliers to unscrew the nut and pull out the hinge.

To reassemble your device, follow these instructions in reverse order.