



HP Pavilion G6-1d16dx Wireless card Replacement

WiFi not functional after multiple troubleshooting attempts.

Written By: Shyanne Bolton



INTRODUCTION

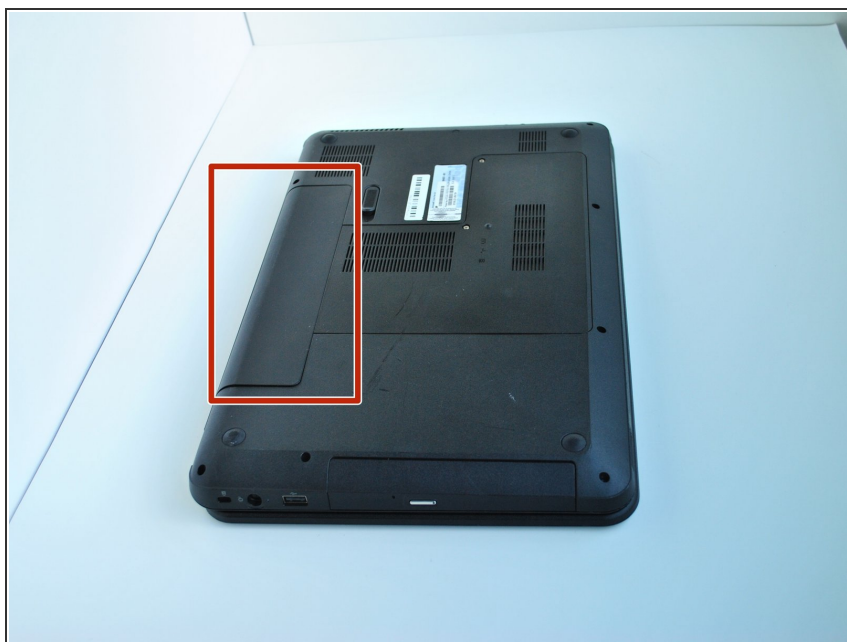
If your wifi is not working for whatever reason and you need to replace the wireless card, you've come to the right place. This guide outlines the process of replacing the wireless card, which is responsible for wifi connection. Between the clear steps and pictures, your computer should be connected to the internet in no time.



TOOLS:

- [Phillips #000 Screwdriver](#) (1)
-

Step 1 — Battery



- Flip the computer so that the bottom side is facing up, and locate the battery above the screen hinges.

Step 2



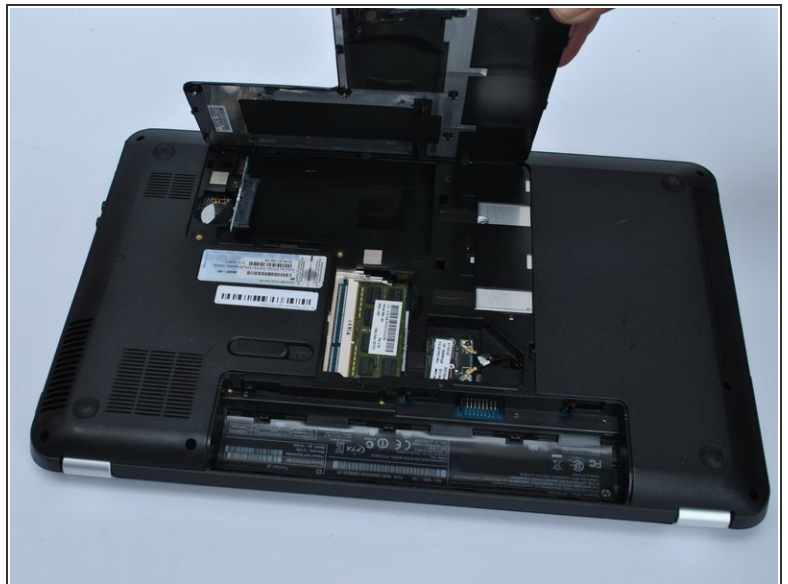
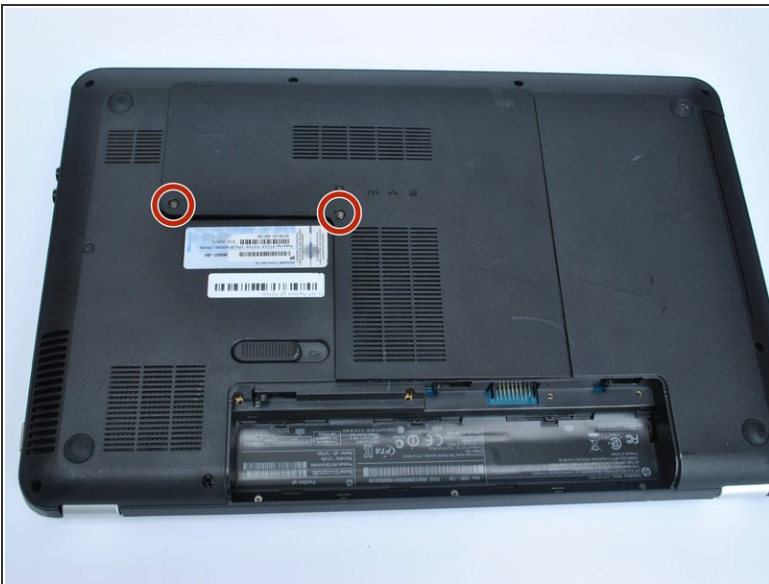
- Slide the switch under the battery compartment to release the battery.

Step 3



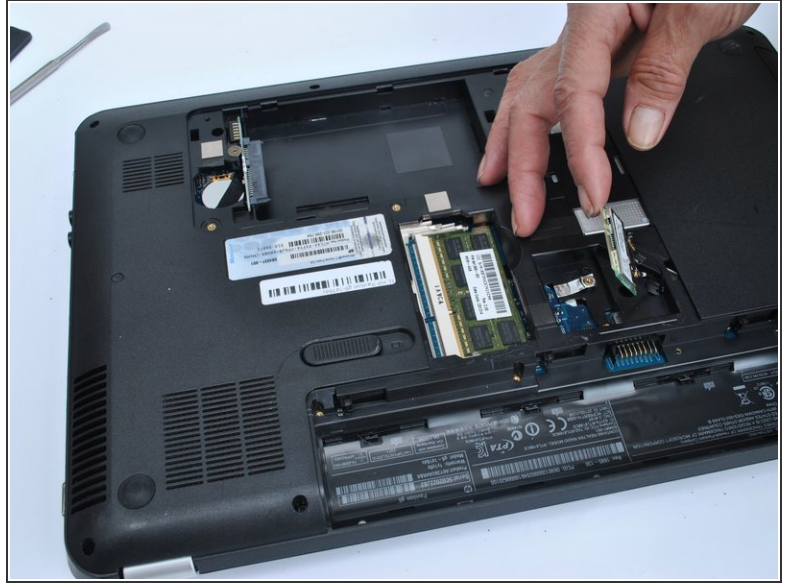
- The battery will pop out above the latch; now remove the battery.

Step 4 — Wireless card



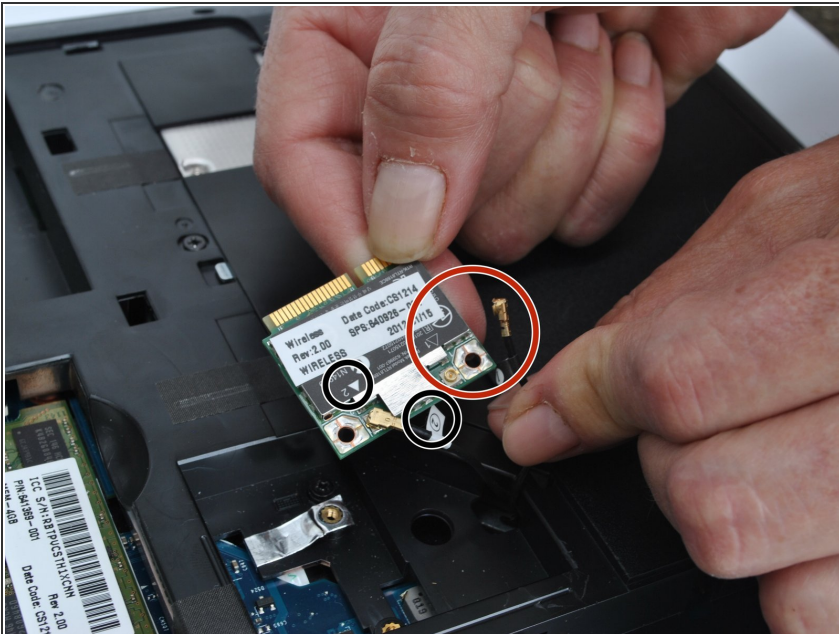
- Unscrew the two silver screws holding the protective cover in place; locate the wireless card.
- ⓘ The screws will not come all the way out; stop when you hear them click.
- Unsnap the protective cover off of the device.

Step 5



- Undo the two screws on the corners of the wireless card.
- Pulling towards where the wires connect with the computer itself, remove the wireless card from its slot.

Step 6



- Unsnap the wires from the wireless card and connect them to the new card with their corresponding attachment points.
- ⓘ These points are indicated by numbered tabs. Wire #1 connects to #1 on the wireless card; this is the same for all corresponding attachments.

To reassemble your device, follow these instructions in reverse order.