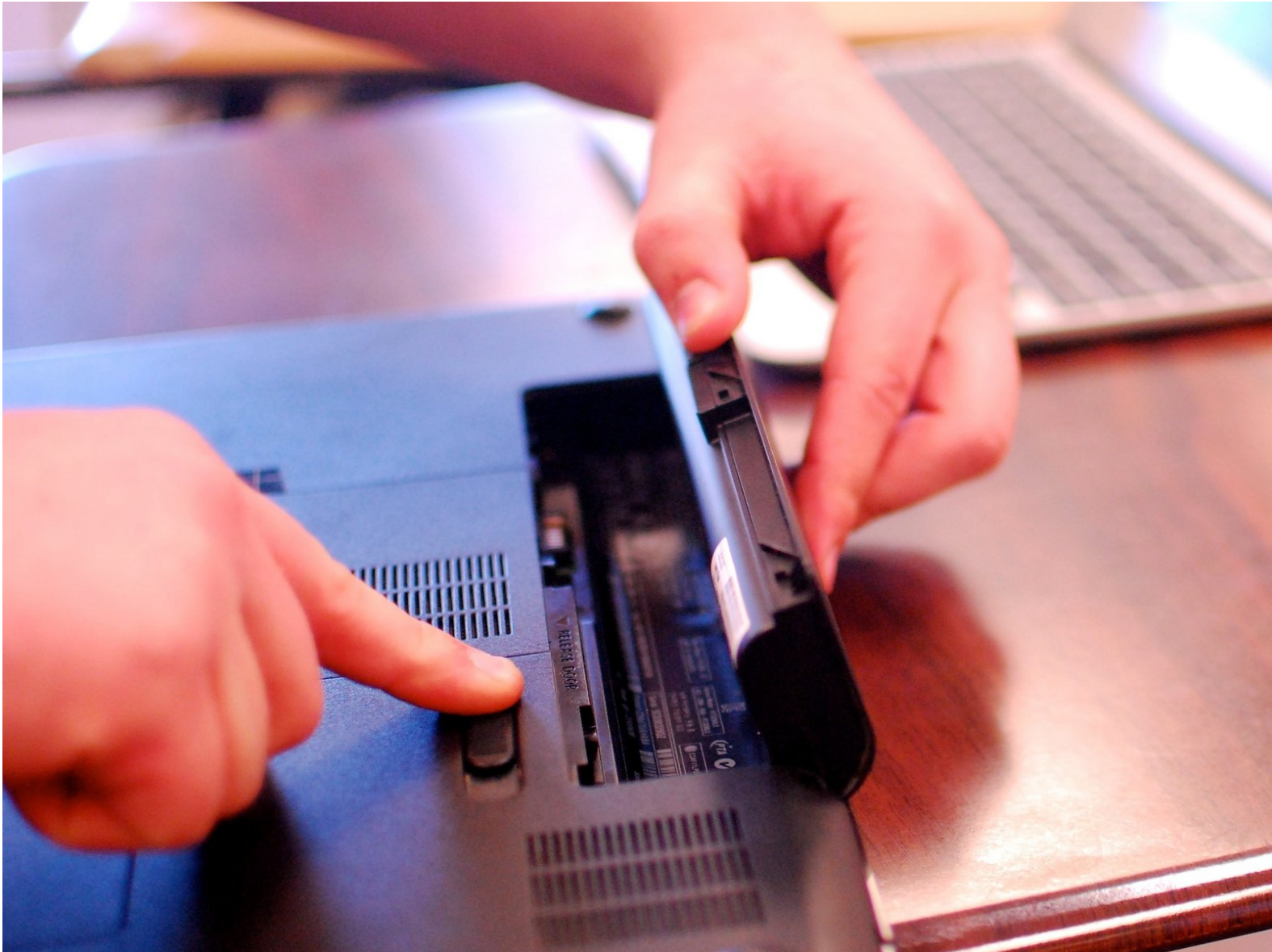




HP Pavilion G6-2249wm screen Replacement

I'm going to remove and replace a broken screen

Written By: hunter



INTRODUCTION

I'm going to replace the broken screen because my dad is not the best with technology and punched the screen.



PARTS:

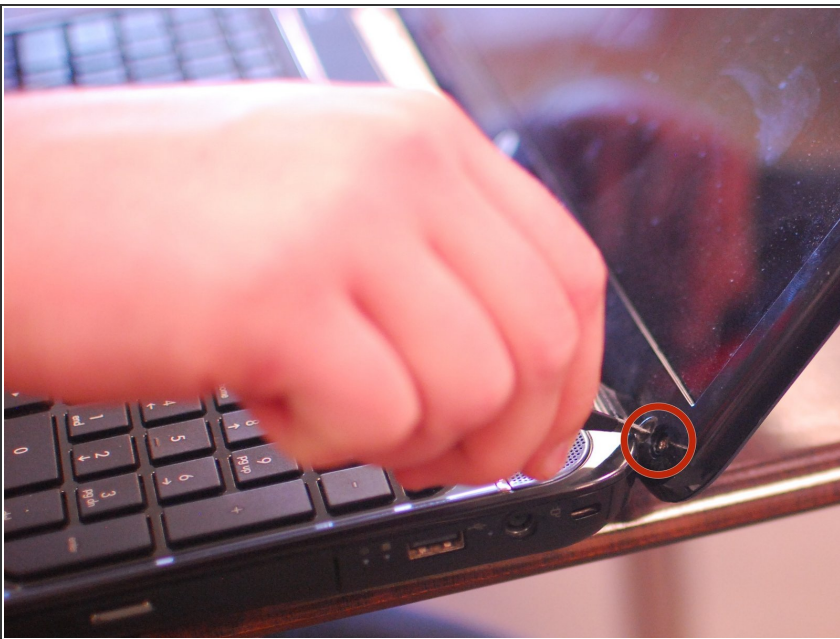
- [15.6" PC Laptop LCD N156B6-L0B](#) (1)
-

Step 1 — Battery removal



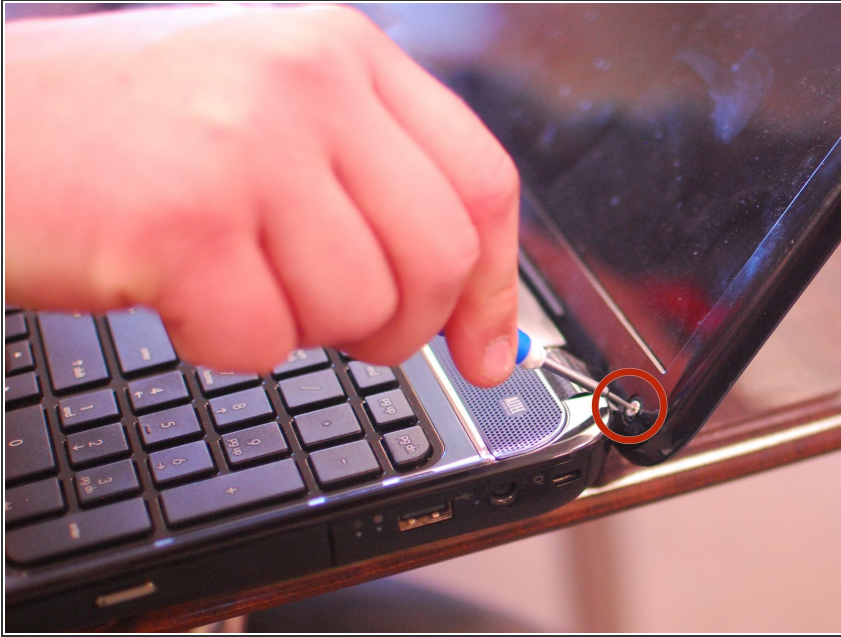
- Make sure the computer is shut off.
- When you know that is shut off you may remove the battery

Step 2 — Begin screen removal



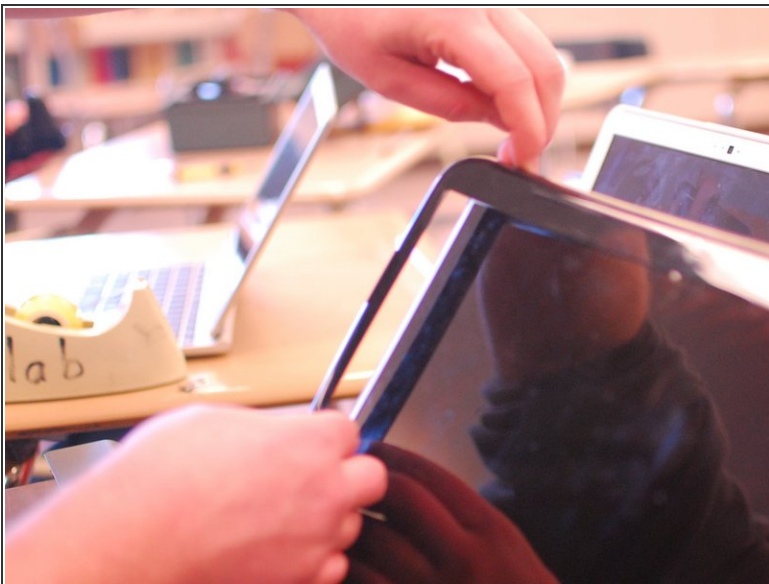
- Remove the little pieces of black sticky tape covering the screws that need to be removed in each lower corner

Step 3 — screw removal



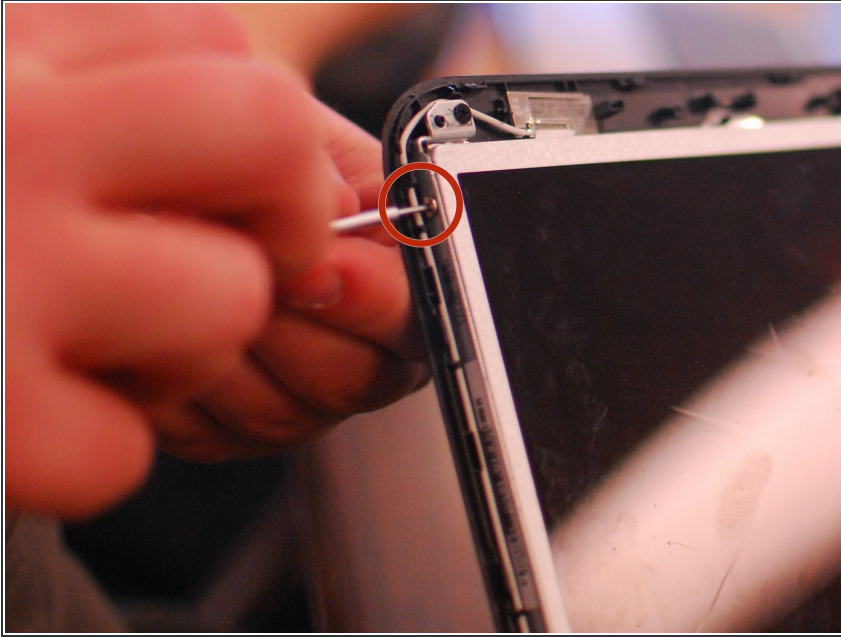
- After the little black sticky tape is removed the two little screws at the lower corners of the screen need to be removed (place the screws on a little piece of tape).

Step 4 — screen cover removal



- After removing the screws, pop out the plastic protector (can be done with your fingers).
- Start at one corner and run your finger under the plastic and it will pop out.

Step 5 — screen screw removal



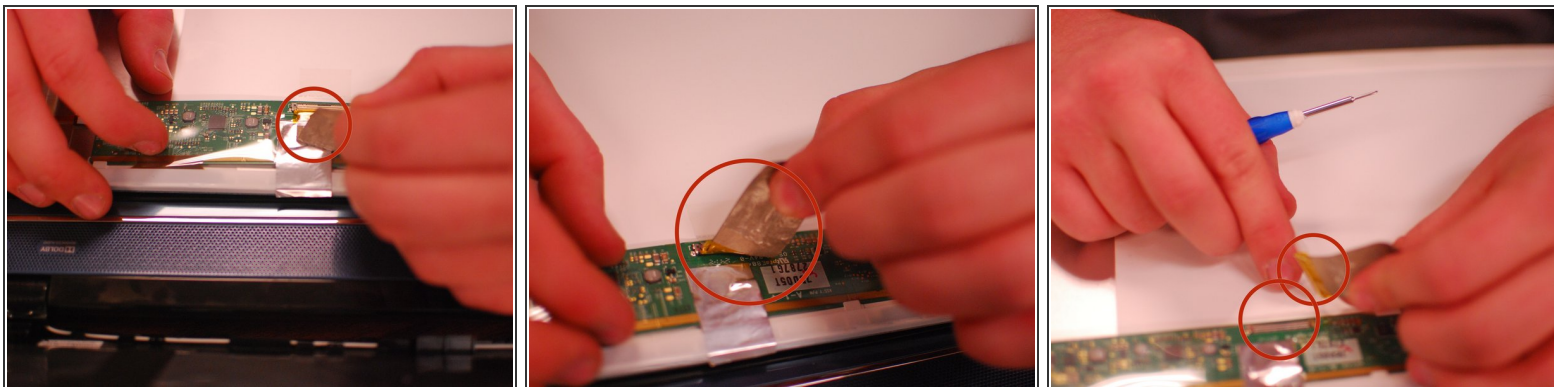
- On each side of the screen there are two little screws, one on top and one on bottom.
- All four of the screws need to be removed (place the screws on a little piece of tape so they won't be lost).

Step 6 — screen removal



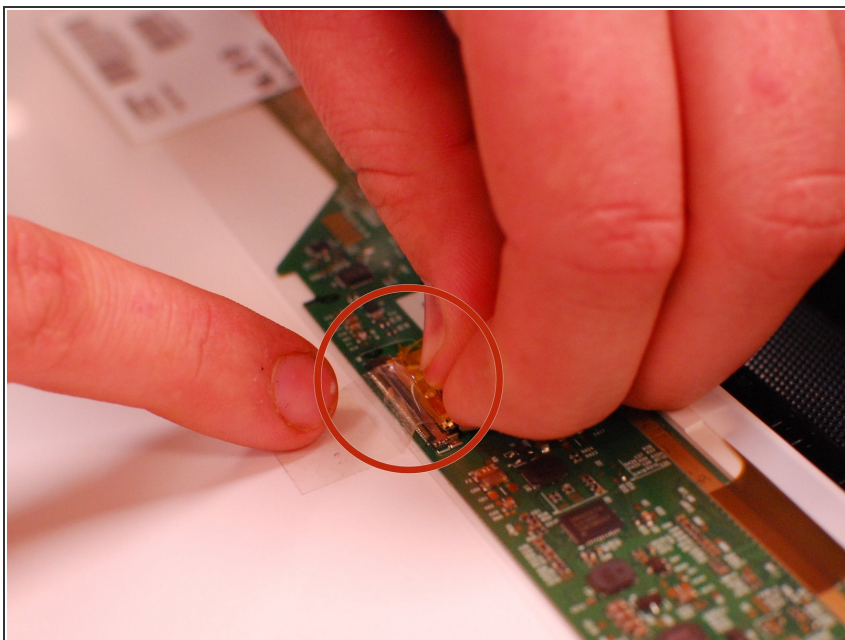
- Once the screws are out, remove the screen and lay it on your keyboard.

Step 7 — digital attachment removal



- Once the screen is laying down you will see a connector on the back of it.
- Pull the sticker off which pulls the connector with it.

Step 8 — Reconnecting the screen



- After the new screen has arrived, reconnect the little connector strip.

Step 9 — Replacing the screws



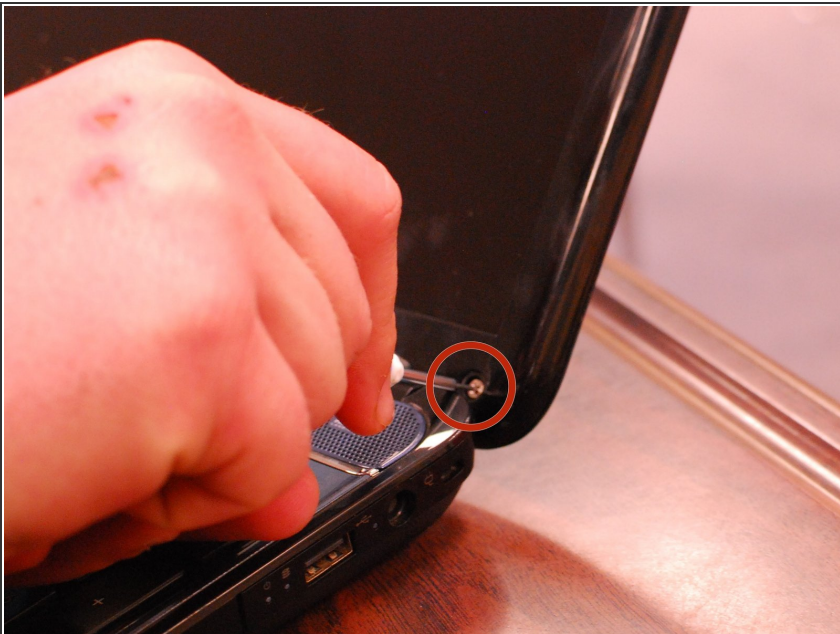
- After the connector has been connected place the screen back into its place.
- Once the screen is in place put in the four little screws that go in each corner of the screen.

Step 10 — black cover placement



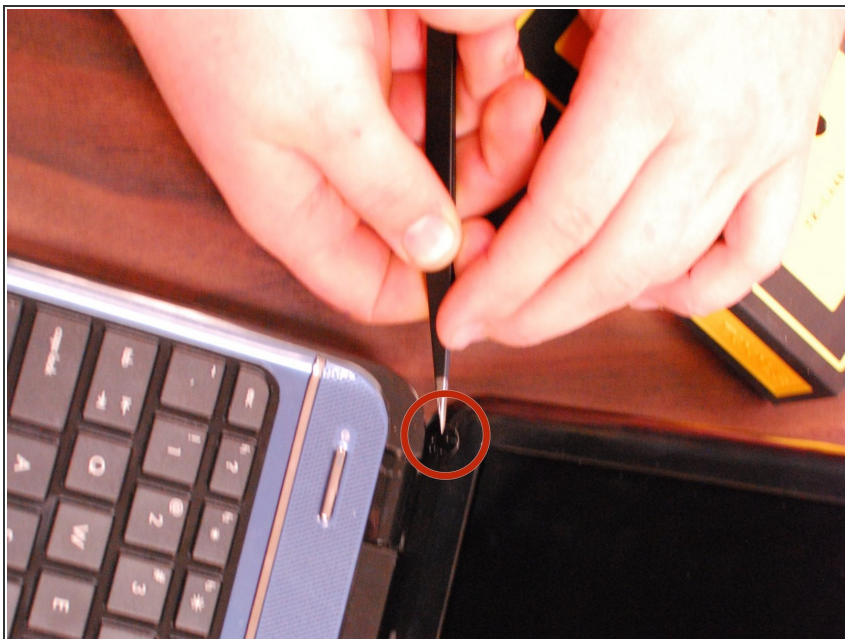
- After the screen is screwed in place the black plastic cover back over the screen.
- Once the black over is in place start clicking the clips back into place by just pressing with your fingers.

Step 11 — Screwing the cover in place



- After the black cover is in place start to but the two little screws back in the two button corners

Step 12 — Sticker placement



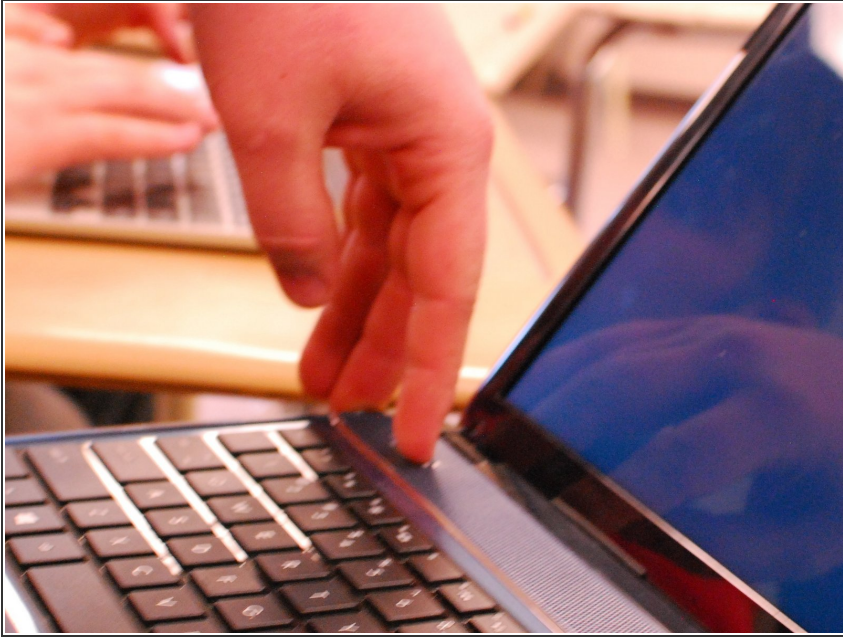
- After the screws are in place the little black sticker over the screws.

Step 13 — Placing the battery



- After the screen is in and everything is tight and in place you may put the battery back in.

Step 14 — Turning on the computer



- Once the battery is in place you may turn is it on and watch your screen come back to life.

To reassemble your device, follow these instructions in reverse order.