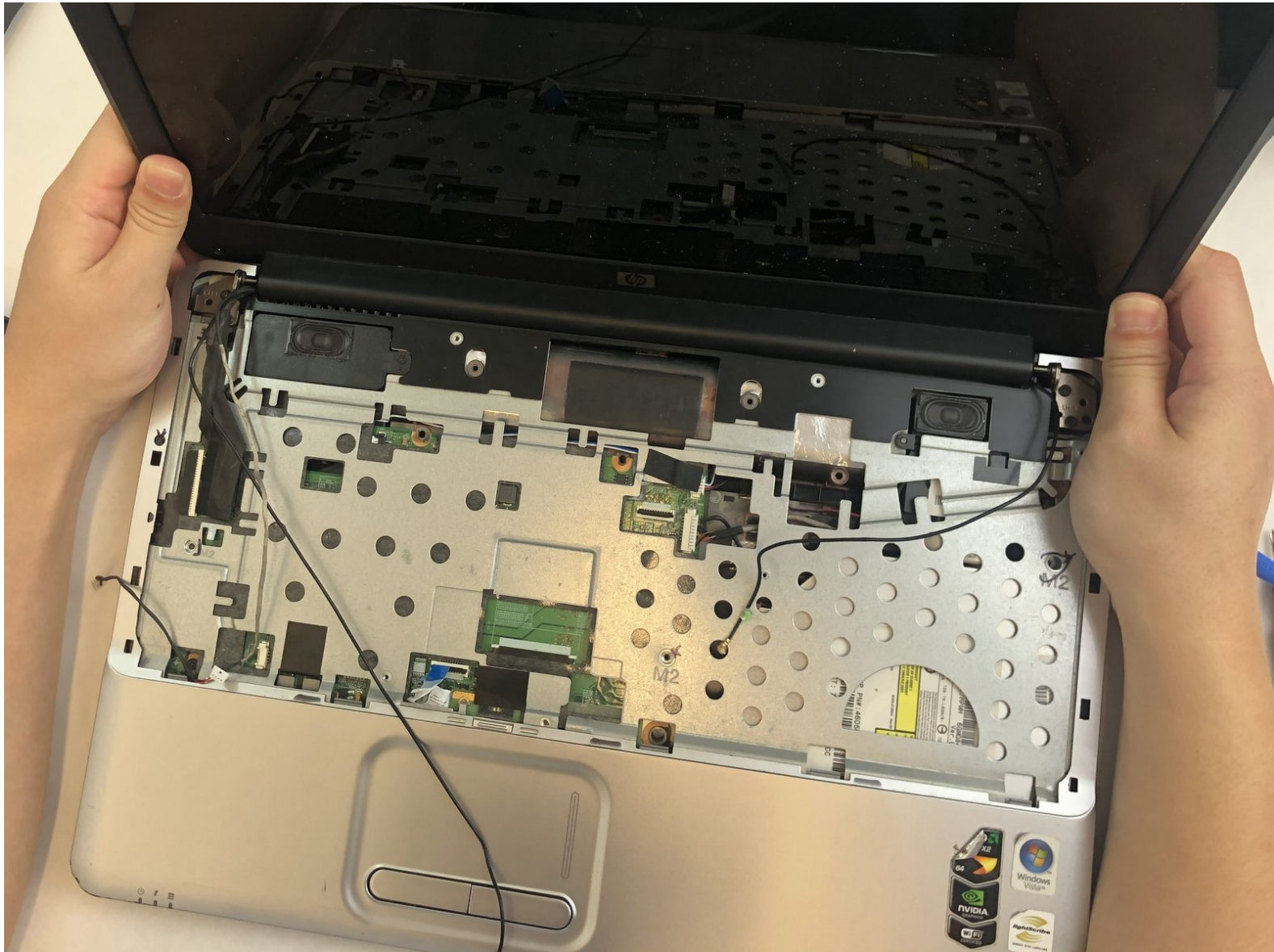




# HP Pavilion G60-120US Display Assembly Replacement

How to replace an HP Pavilion G60-120US display assembly.

Written By: Won Chan Park



---

## INTRODUCTION

This guide shows how to go about removing the display assembly from the HP Pavilion G60-120US and installing a replacement. This will also enable users to access multiple parts of the laptop.

---



### TOOLS:

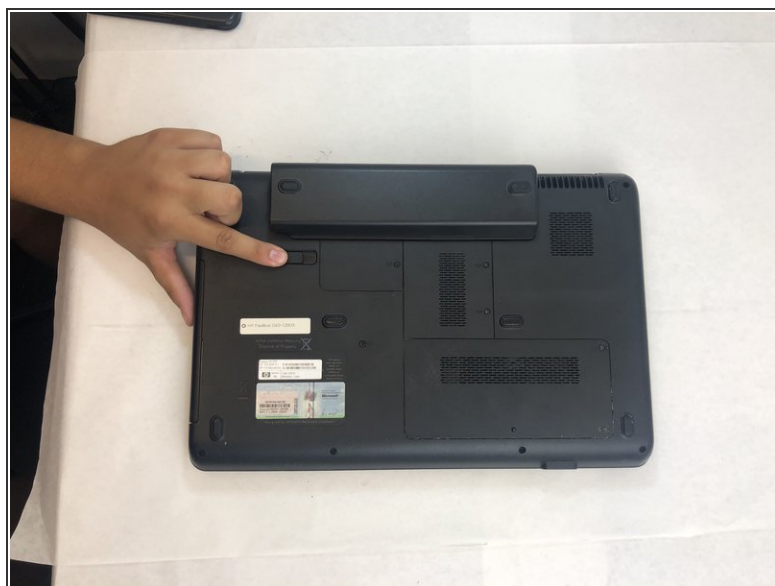
- [iFixit Opening Tools](#) (1)
  - [Phillips #0 Screwdriver](#) (1)
-

## Step 1 — Battery



- ⚠ Make sure the laptop is turned off.
- Turn the laptop over to reveal the battery.

## Step 2



- Slide and hold the battery release switch to the left to release the battery from the device.

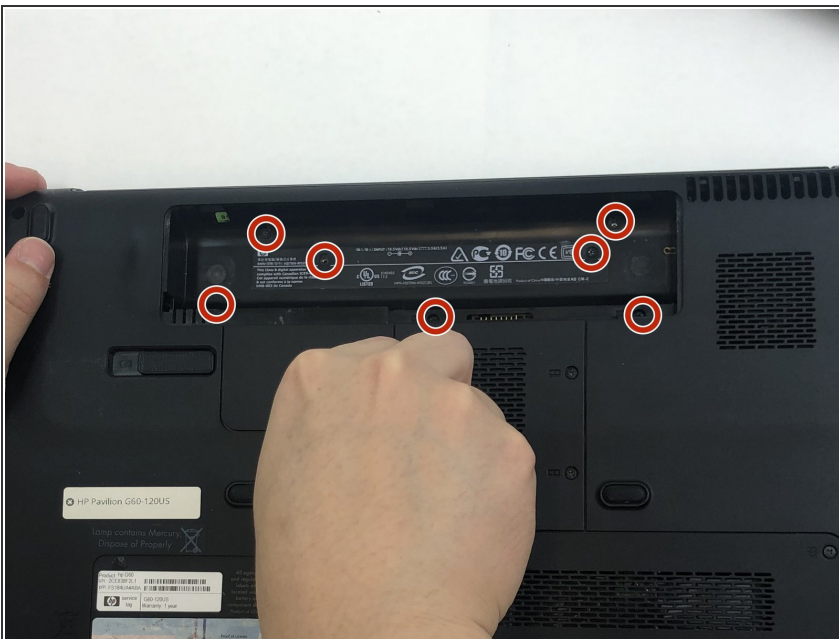


### Step 3



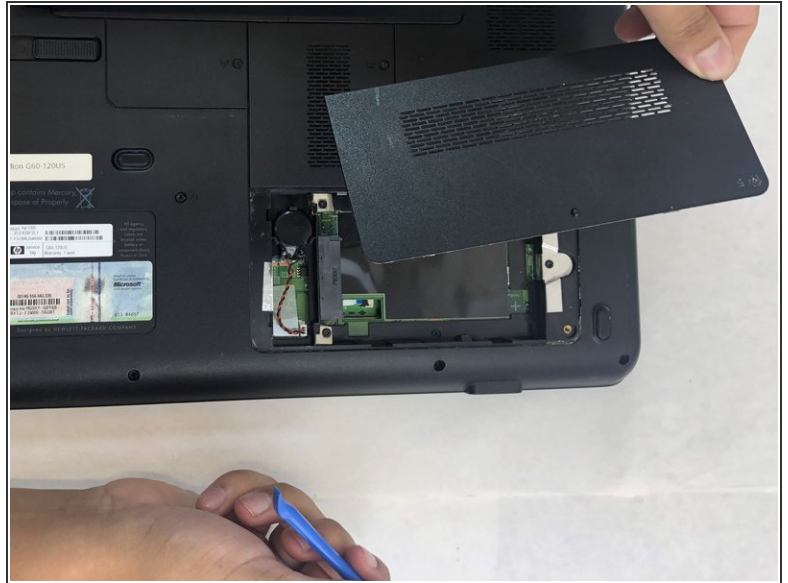
- While holding the battery release switch, grab the battery and pull it upward gently.

### Step 4 — Keyboard



- Using the Phillips #0 screwdriver, remove the seven 4.0mm screws on the battery compartment of the laptop.

## Step 5



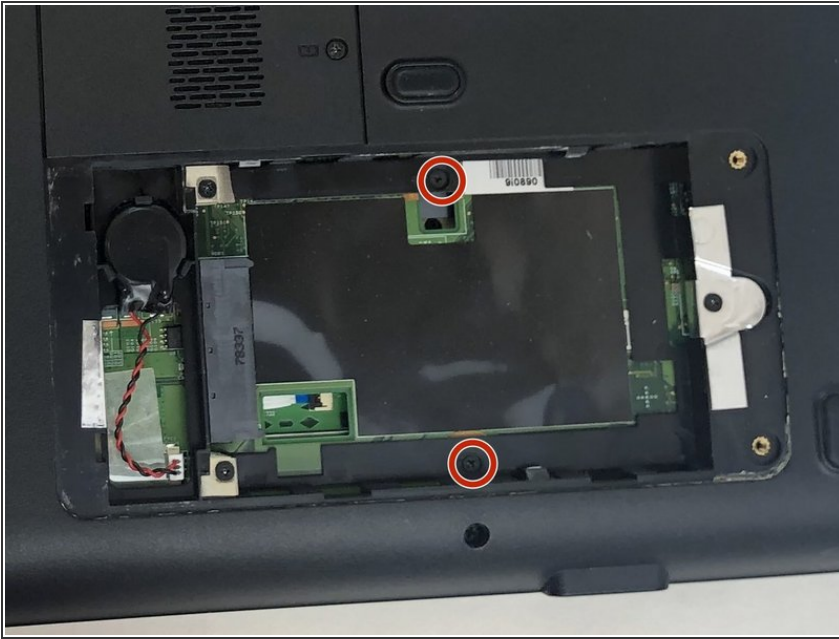
- Using the Phillips #0 screwdriver, remove two 4.0mm screws from the hard disk cover.
- Remove the hard disk cover.

## Step 6



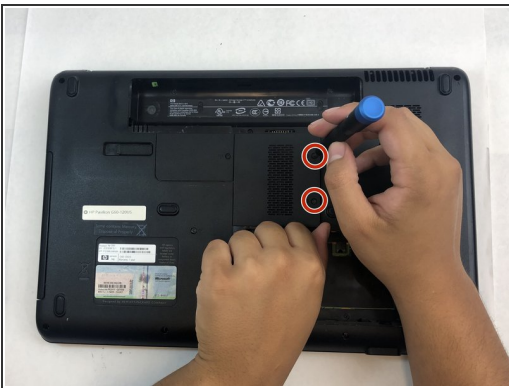
- Remove the hard drive by pulling gently and disconnecting the hard drive from the laptop.
- Gently pull on the black and red wiring on the bottom left to separate the wire from the component.

## Step 7



- Remove the two 4.0 mm Phillips #0 screws from the hard disk compartment.

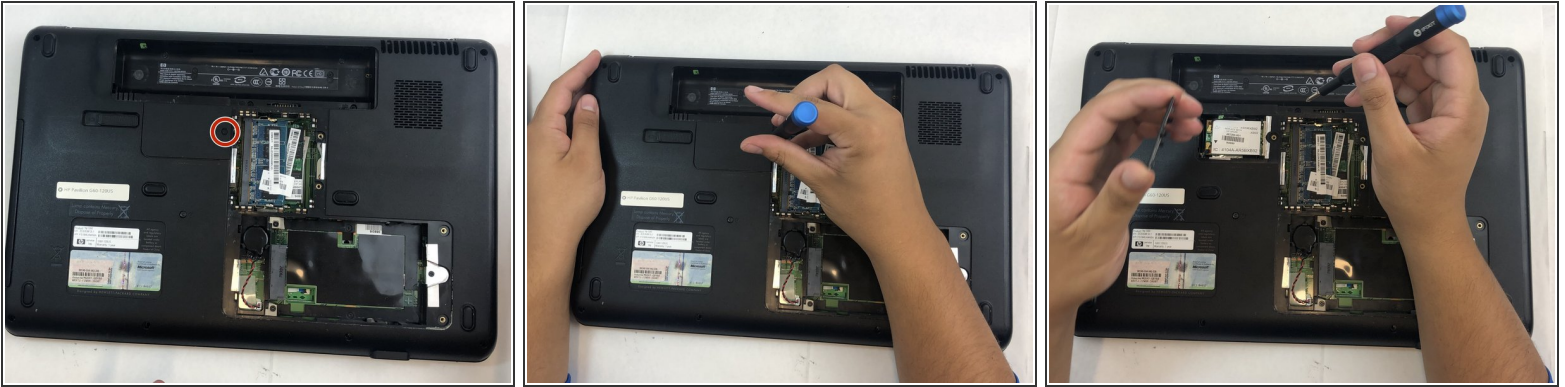
## Step 8



- Using the Phillips #0 screwdriver, remove the two 4.0 mm screws from the memory card cover.
- Remove the memory disk cover.



## Step 9



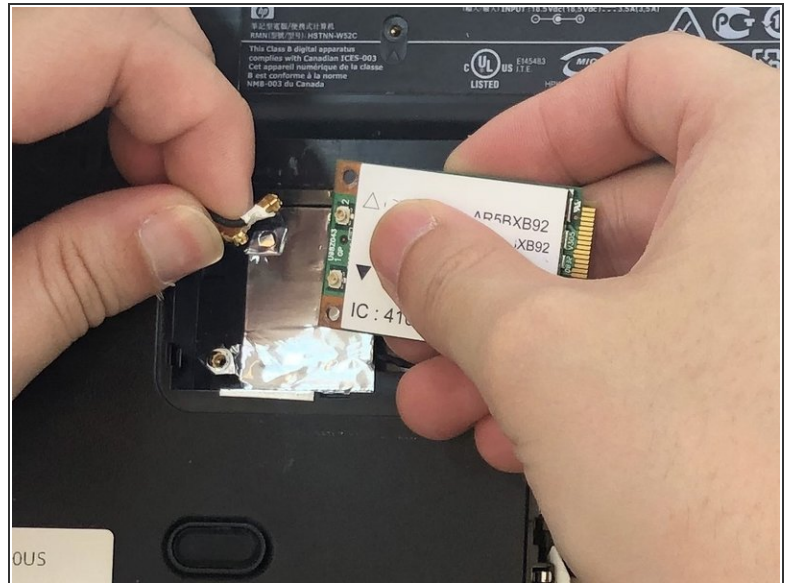
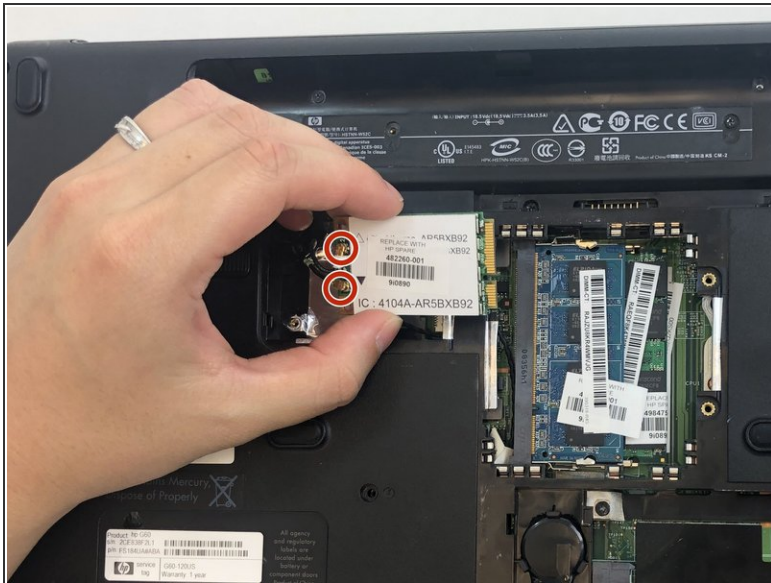
- Using the Phillips #0 screwdriver, remove the 4.0 mm screw from the Wi-Fi chip cover.
- Remove the Wi-Fi chip cover.

## Step 10



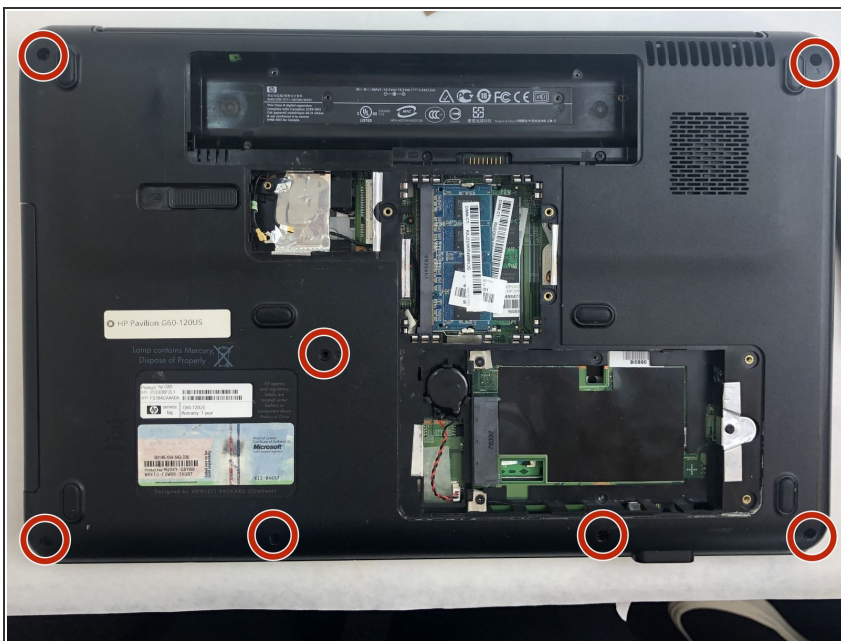
- Using the Phillips #0 screwdriver, remove the two 3.0 mm screws securing the Wi-Fi chip in place.
- Grab the Wi-Fi chip and pull up gently to the left to disconnect it from the laptop.

## Step 11



- Disconnect the two wires connecting the chip's base.
- Remove the Wi-Fi chip.

## Step 12



- Using the Phillips #0 screwdriver, remove the seven 4.0 mm screws on the bottom of the laptop.

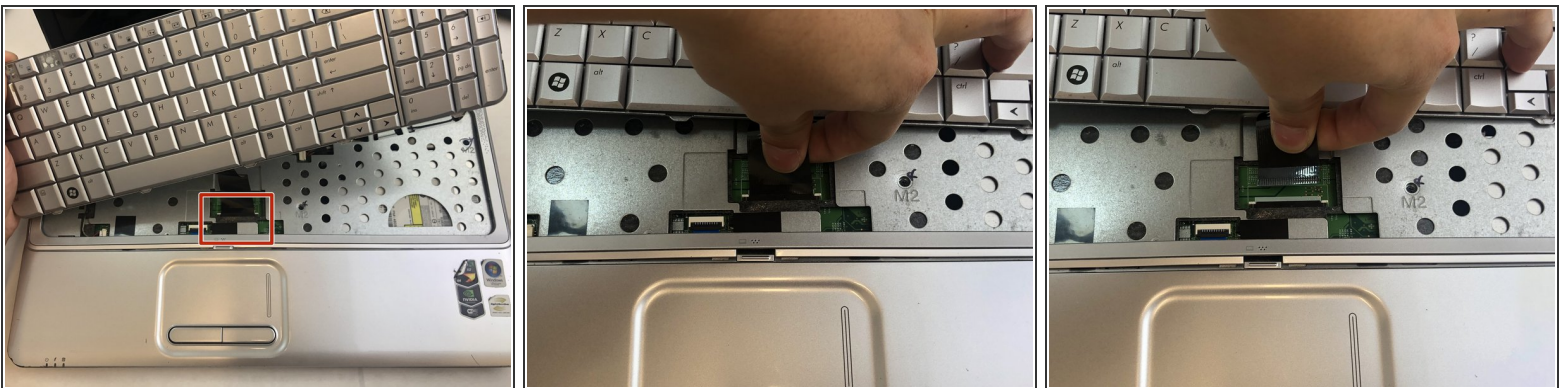


## Step 13



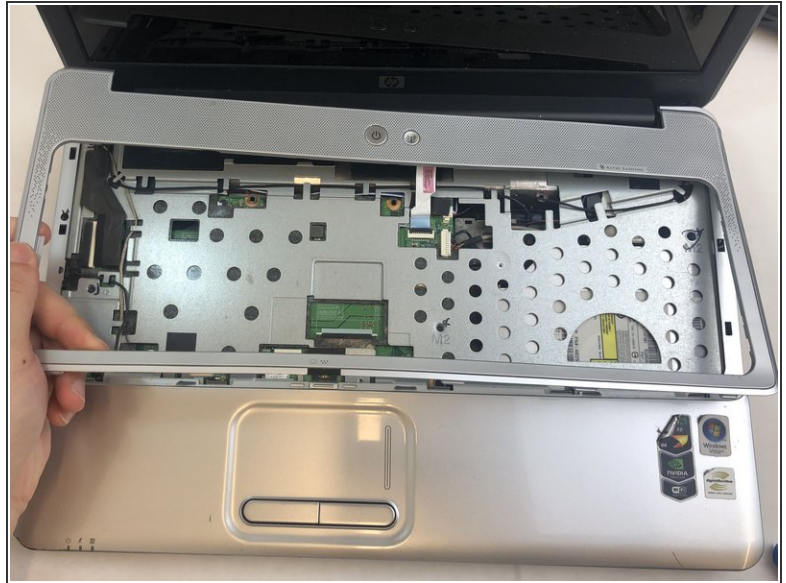
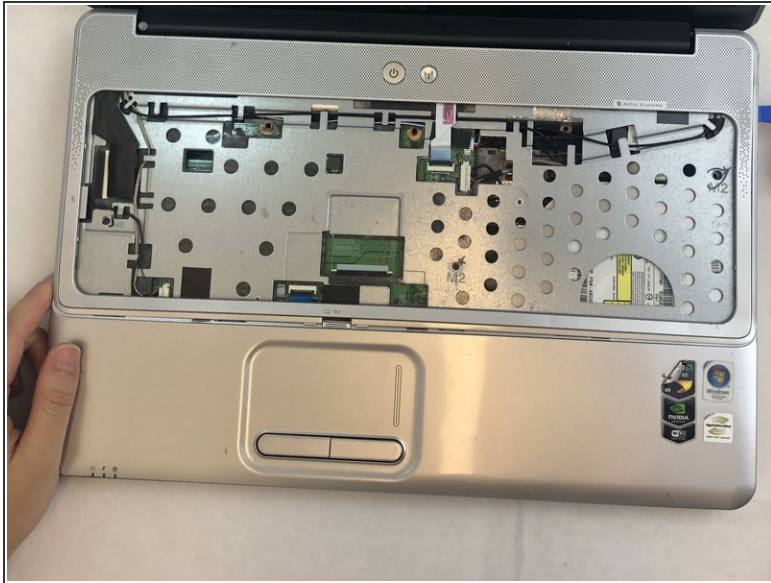
- Turn the laptop back to its upright state.
  - Insert an opening tool into the upper right corner of the keyboard and gently lift it to separate it from the laptop.
- ⚠ Be sure not to apply excessive pressure to prevent the bending and breaking of the keyboard.
- ⚠ Do not pull the keyboard all the way out because there is a wiring connection under the keyboard.

## Step 14



- Grab the wiring and gently pull it out to disconnect it from the laptop.
- ⚠ Don't use excessive force.
- Remove the keyboard.

## Step 15 — Display Assembly



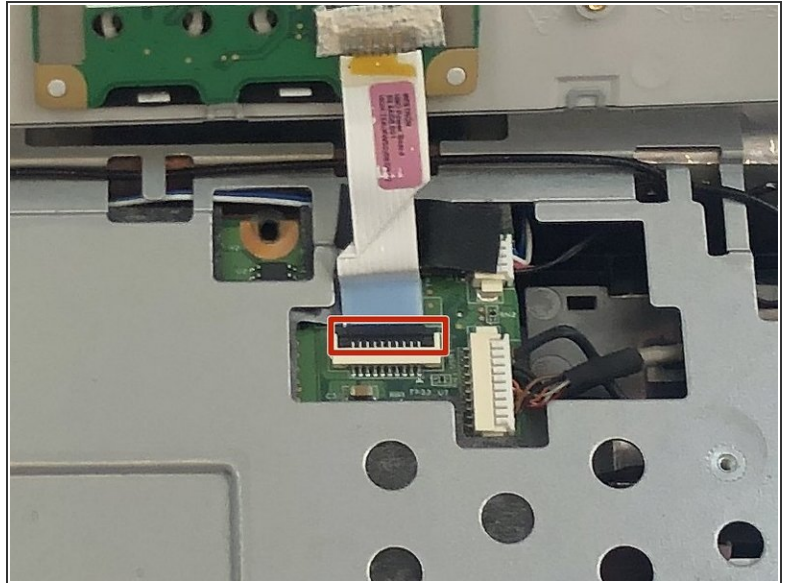
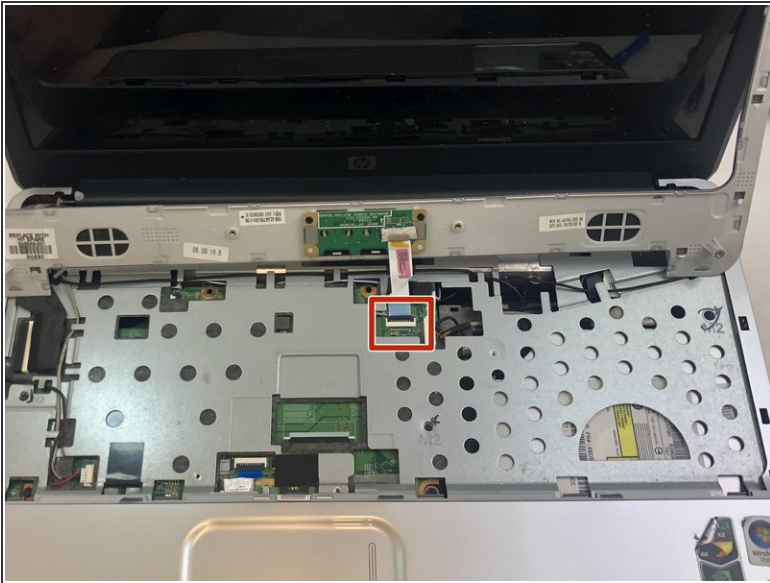
- Insert an opening tool into the top right side of the corner, and gently lift the rest of the cover to separate it from the laptop.

⚠ Avoid using excessive force which may break the cover.

⚠ Do not completely pull out the cover; there is a wire still attached to the laptop.

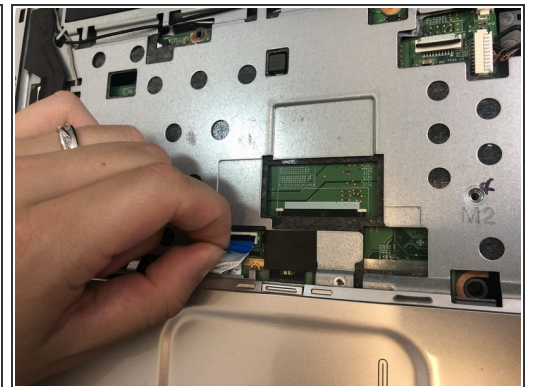
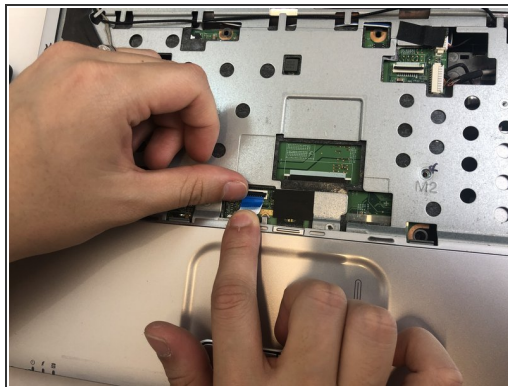


## Step 16



- Using your fingertips, detach the ribbon cable by gently lifting up the black tab located on the bottom end of the cable.
- Separate the cable and remove the cover.

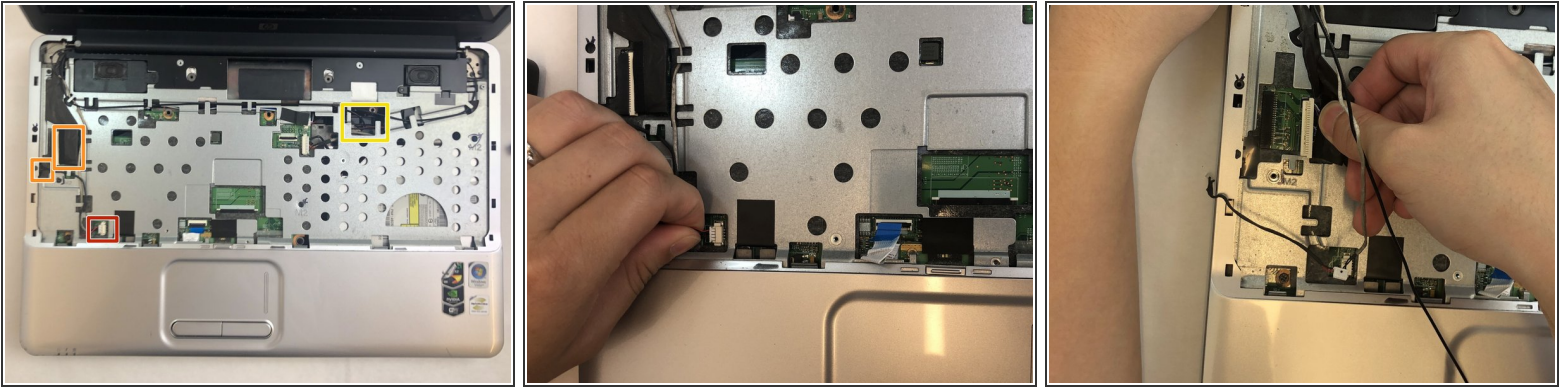
## Step 17



- Remove the mouse and touchpad cable by lifting the black tab and gently pulling the cable out.



## Step 18



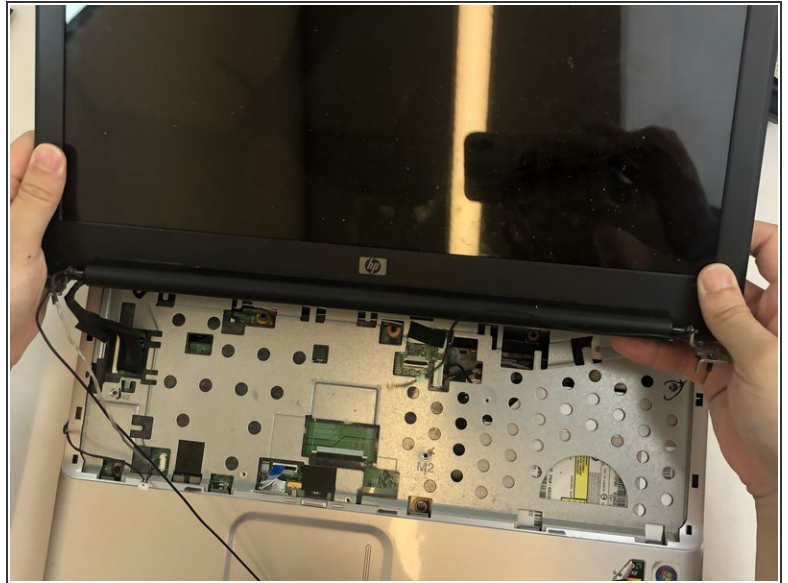
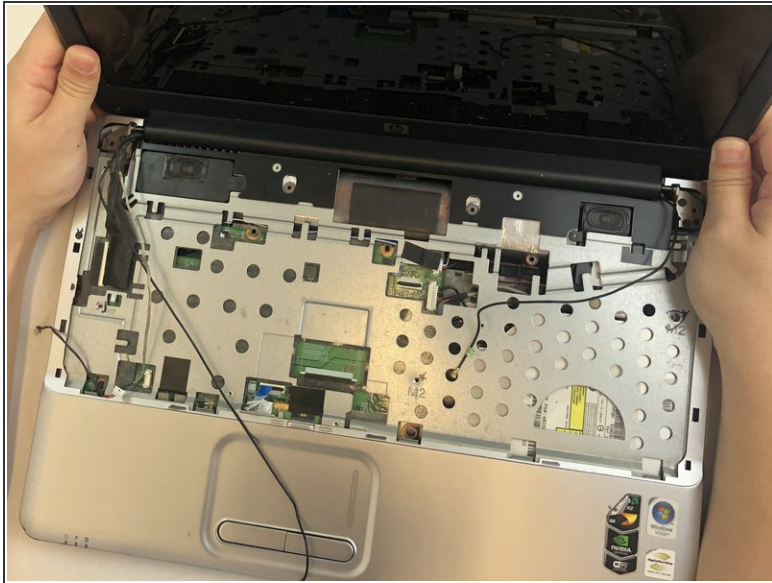
- Detach the white screen wiring on the bottom left side by gently pulling out.
  - Detach two black screen cables on the middle left side by gently pulling out the cables.
  - Pull out the black cable on the upper right side of the laptop.
- ⚠ Use gentle pressure while removing the wires.

## Step 19



- Using the Phillips #0 screwdriver, remove the four 4.0 mm screws on both hinges of the laptop's screen.

## Step 20



- Gently lift and detach the display assembly from the laptop's base.

To reassemble your device, follow these instructions in reverse order.