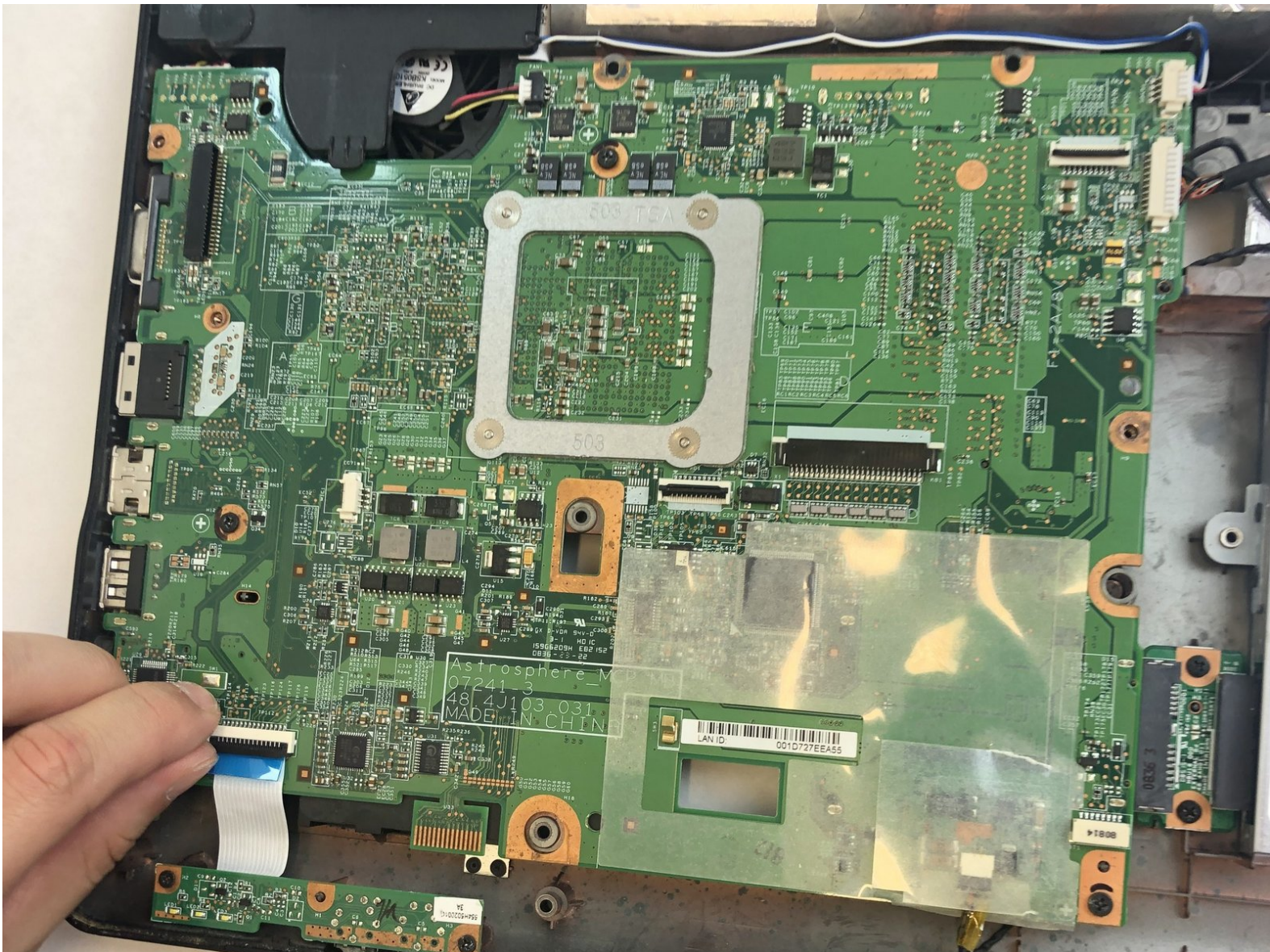




HP Pavilion G60-120US Midframe Replacement

How to remove the midframe of the HP Pavilion G60-120US laptop.

Written By: Won Chan Park





TOOLS:

- [iFixit Opening Tools](#) (1)
- [Phillips #0 Screwdriver](#) (1)

Step 1 — Battery



- ⚠ Make sure the laptop is turned off.
- Turn the laptop over to reveal the battery.

Step 2



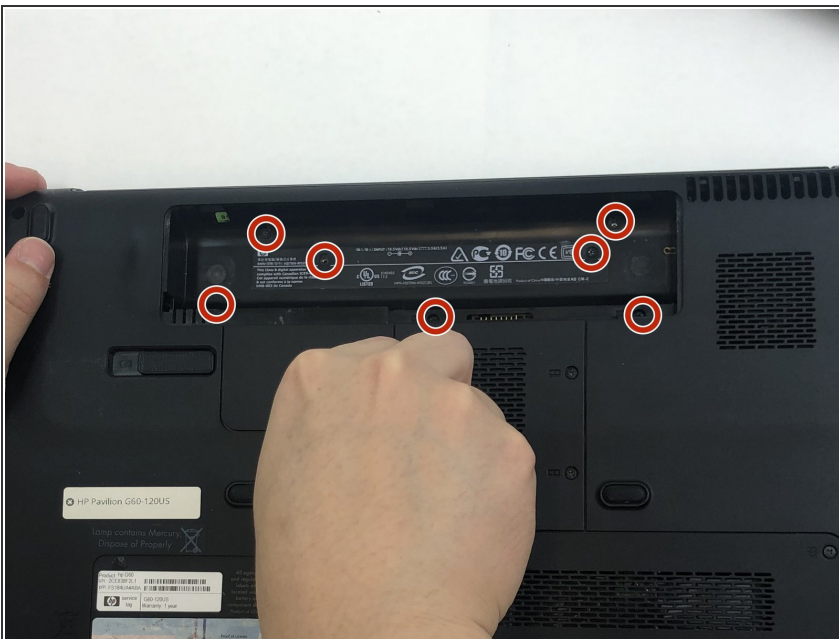
- Slide and hold the battery release switch to the left to release the battery from the device.

Step 3



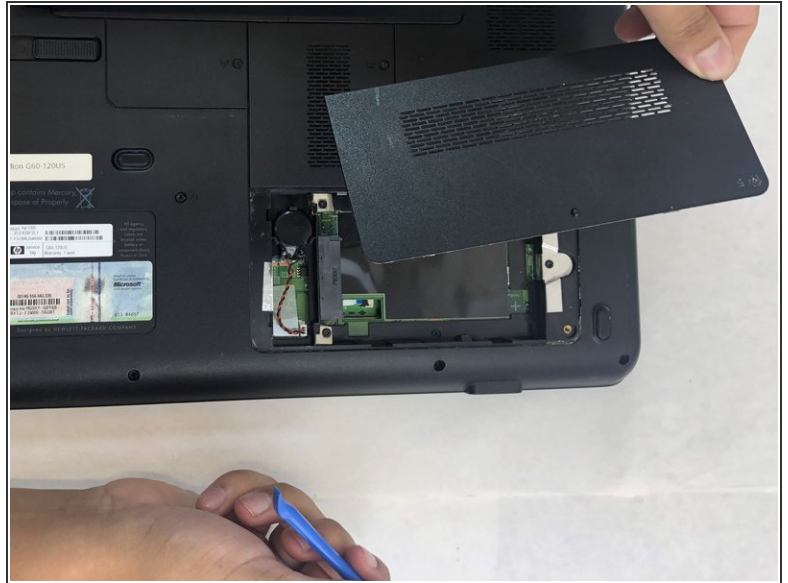
- While holding the battery release switch, grab the battery and pull it upward gently.

Step 4 — Keyboard



- Using the Phillips #0 screwdriver, remove the seven 4.0mm screws on the battery compartment of the laptop.

Step 5



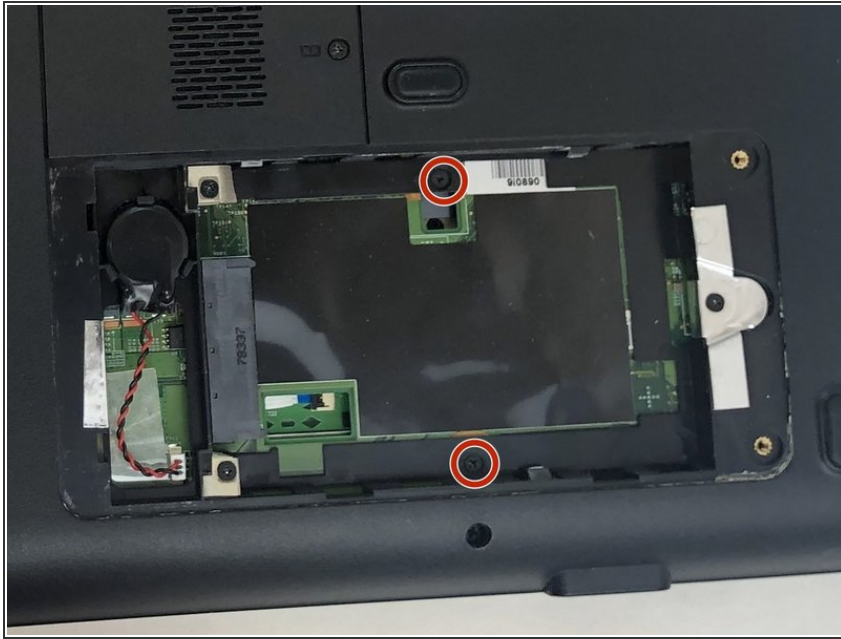
- Using the Phillips #0 screwdriver, remove two 4.0mm screws from the hard disk cover.
- Remove the hard disk cover.

Step 6



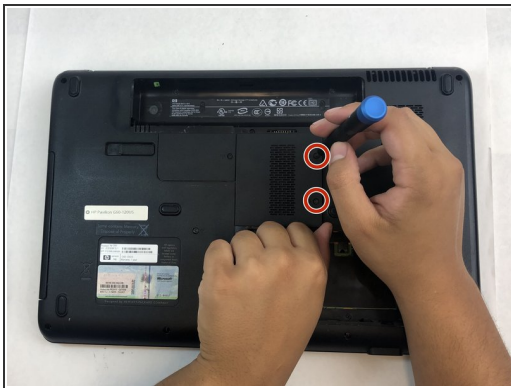
- Remove the hard drive by pulling gently and disconnecting the hard drive from the laptop.
- Gently pull on the black and red wiring on the bottom left to separate the wire from the component.

Step 7



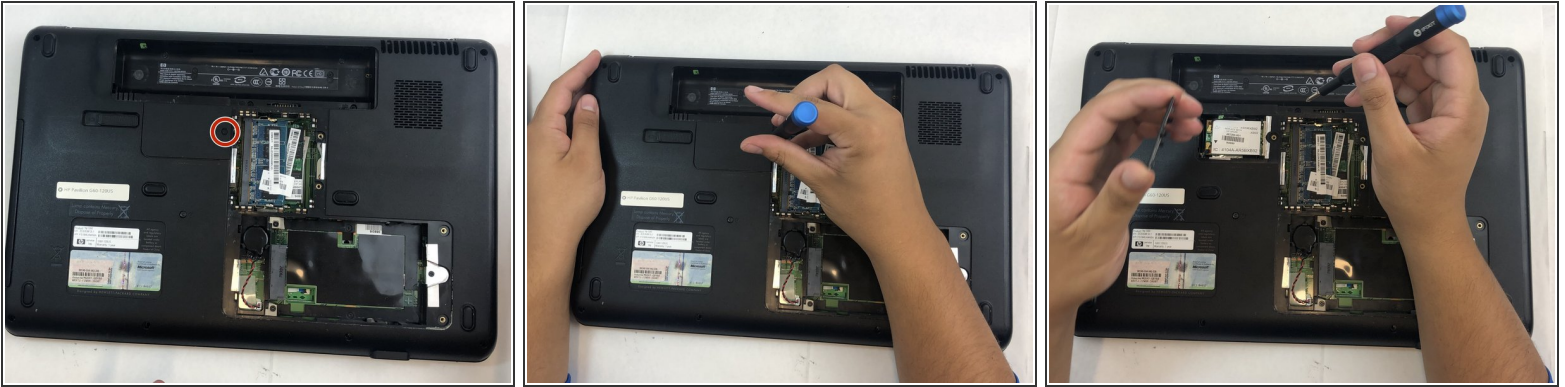
- Remove the two 4.0 mm Phillips #0 screws from the hard disk compartment.

Step 8



- Using the Phillips #0 screwdriver, remove the two 4.0 mm screws from the memory card cover.
- Remove the memory disk cover.

Step 9



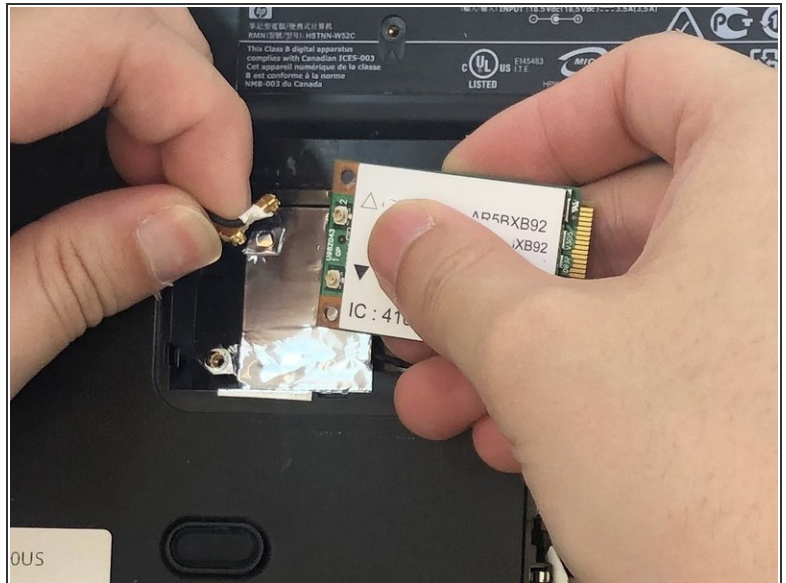
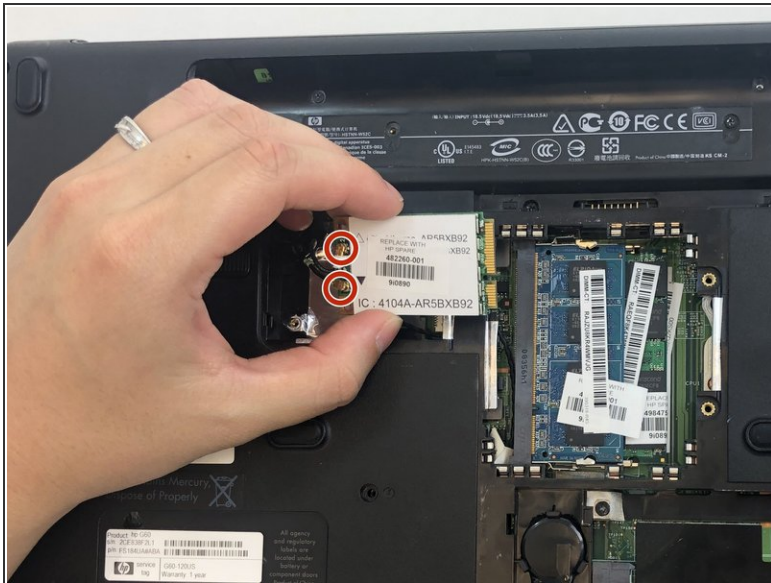
- Using the Phillips #0 screwdriver, remove the 4.0 mm screw from the Wi-Fi chip cover.
- Remove the Wi-Fi chip cover.

Step 10



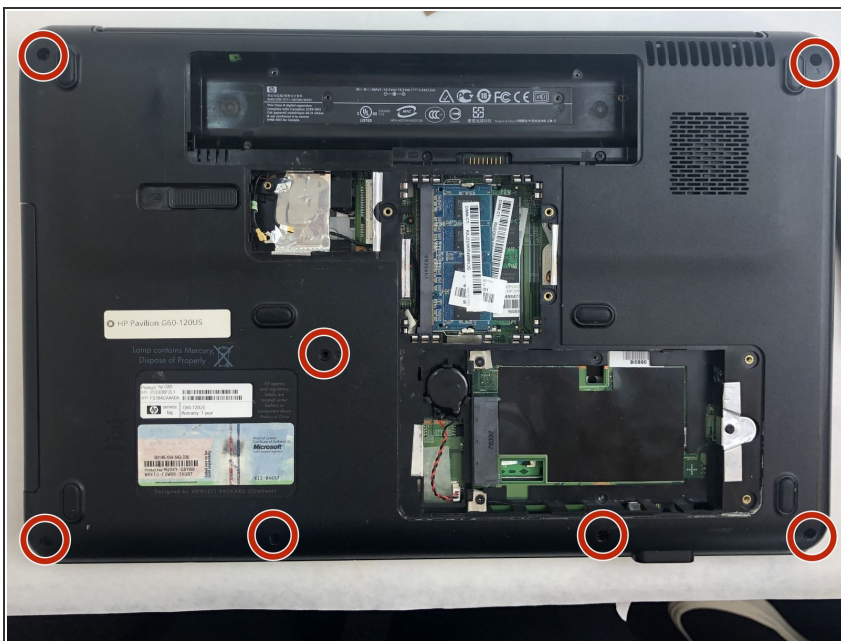
- Using the Phillips #0 screwdriver, remove the two 3.0 mm screws securing the Wi-Fi chip in place.
- Grab the Wi-Fi chip and pull up gently to the left to disconnect it from the laptop.

Step 11



- Disconnect the two wires connecting the chip's base.
- Remove the Wi-Fi chip.

Step 12



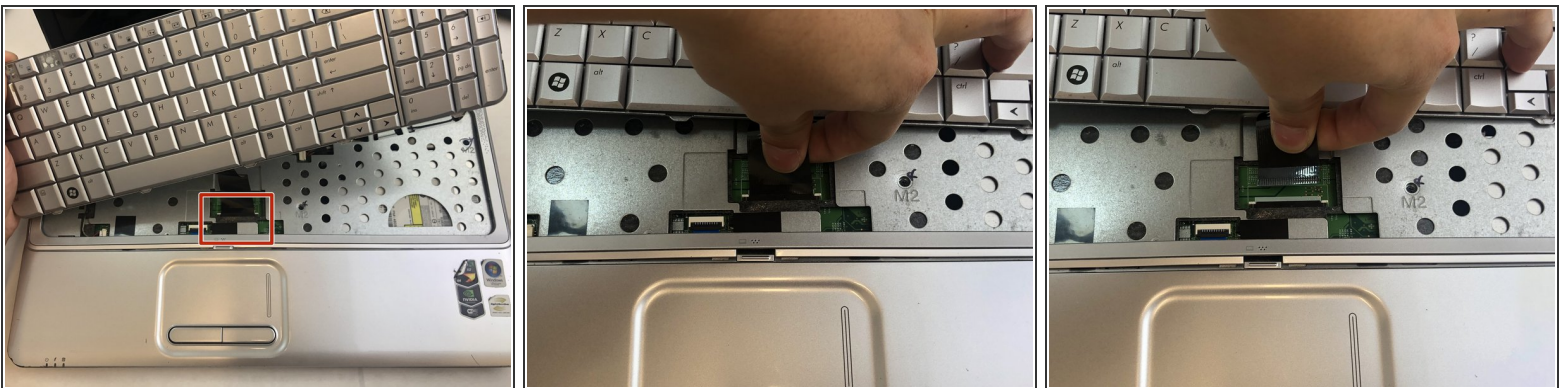
- Using the Phillips #0 screwdriver, remove the seven 4.0 mm screws on the bottom of the laptop.

Step 13



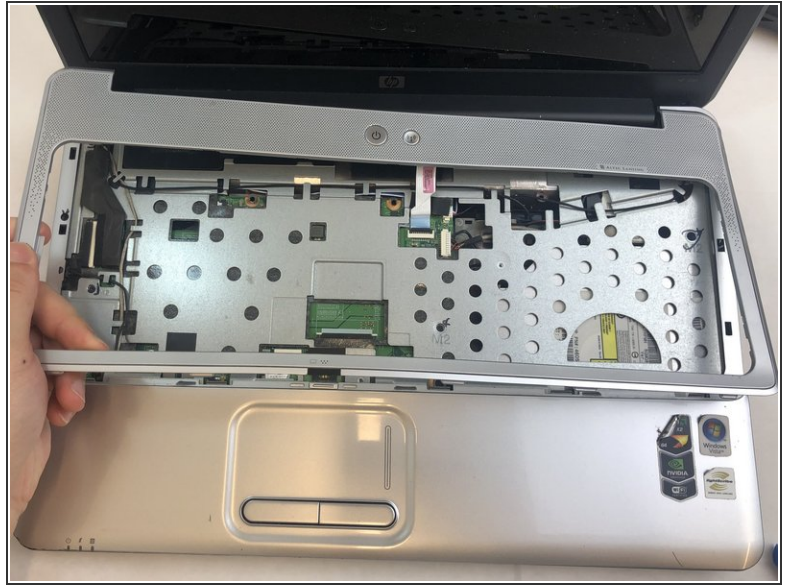
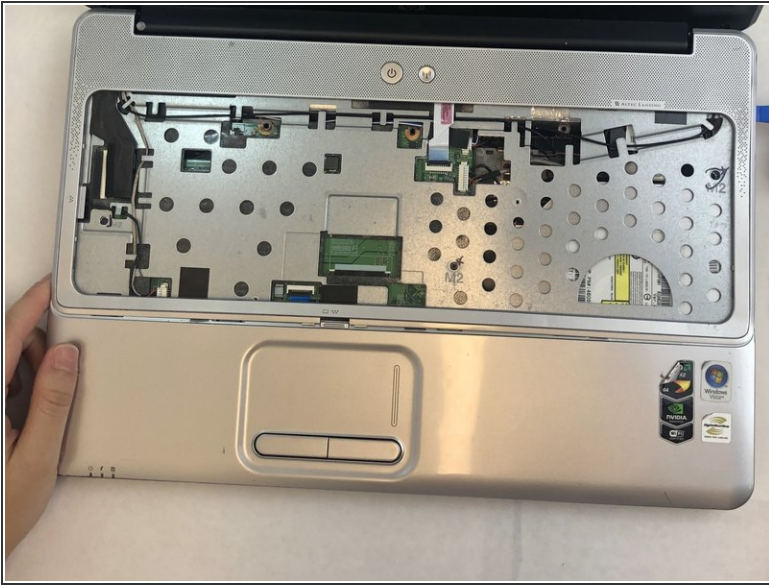
- Turn the laptop back to its upright state.
 - Insert an opening tool into the upper right corner of the keyboard and gently lift it to separate it from the laptop.
- ⚠ Be sure not to apply excessive pressure to prevent the bending and breaking of the keyboard.
- ⚠ Do not pull the keyboard all the way out because there is a wiring connection under the keyboard.

Step 14



- Grab the wiring and gently pull it out to disconnect it from the laptop.
- ⚠ Don't use excessive force.
- Remove the keyboard.

Step 15 — Display Assembly

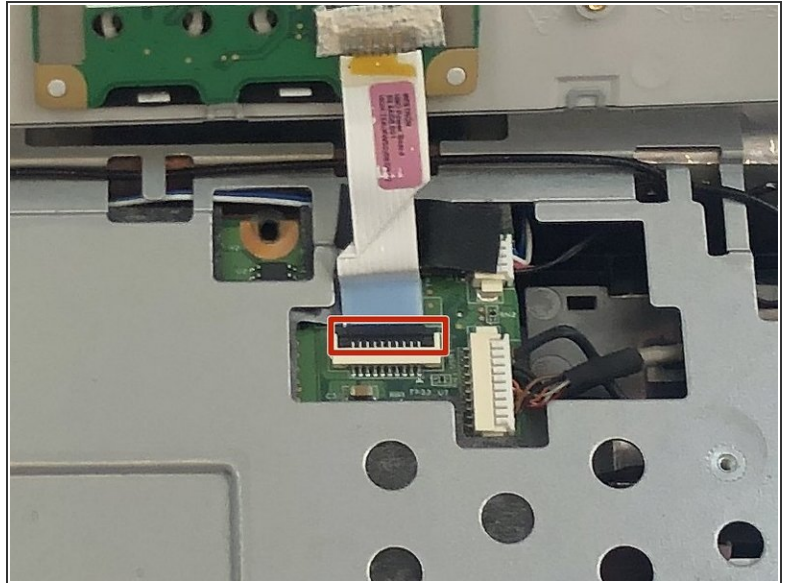
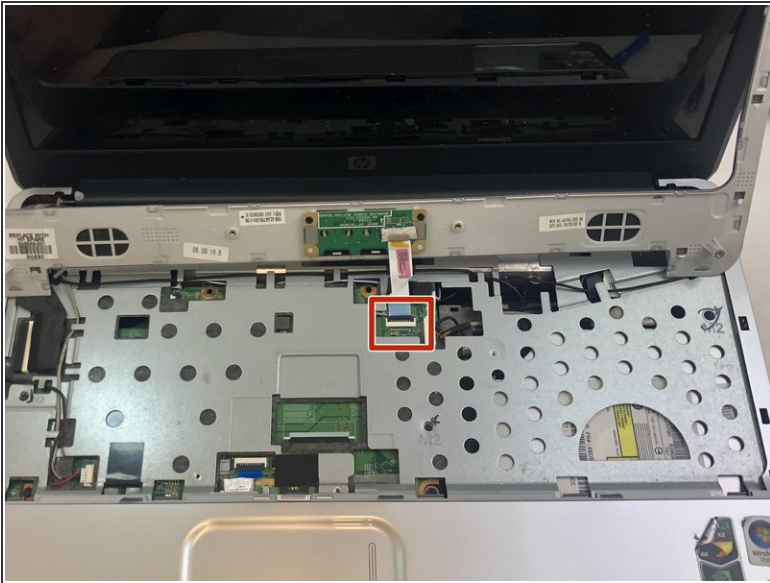


- Insert an opening tool into the top right side of the corner, and gently lift the rest of the cover to separate it from the laptop.

⚠ Avoid using excessive force which may break the cover.

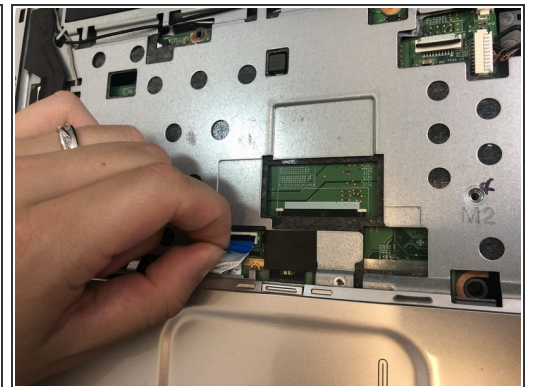
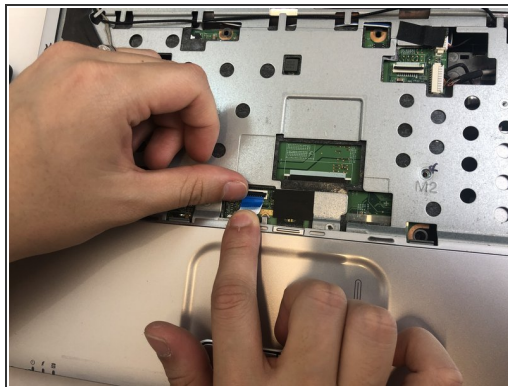
⚠ Do not completely pull out the cover; there is a wire still attached to the laptop.

Step 16



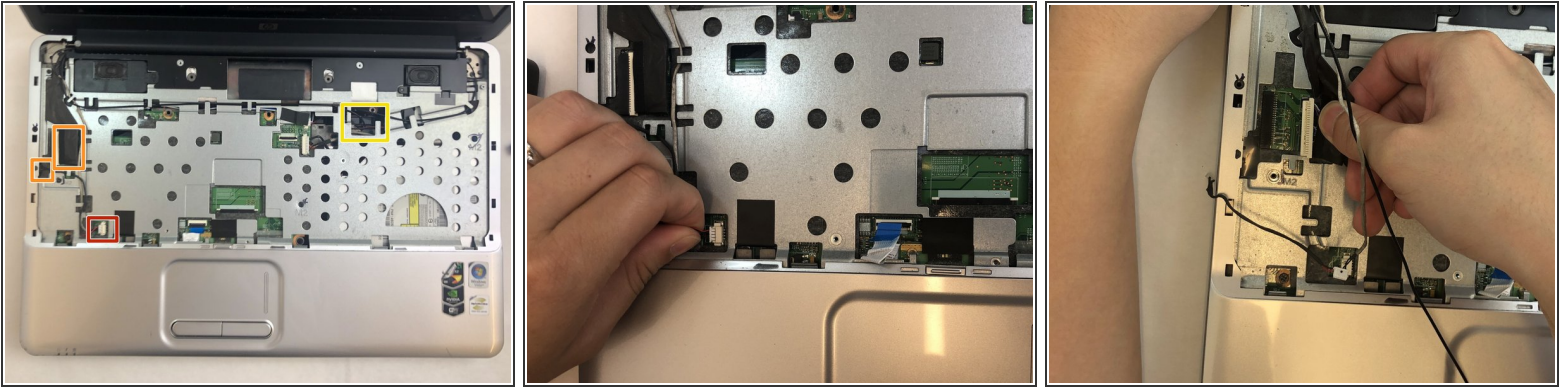
- Using your fingertips, detach the ribbon cable by gently lifting up the black tab located on the bottom end of the cable.
- Separate the cable and remove the cover.

Step 17



- Remove the mouse and touchpad cable by lifting the black tab and gently pulling the cable out.

Step 18



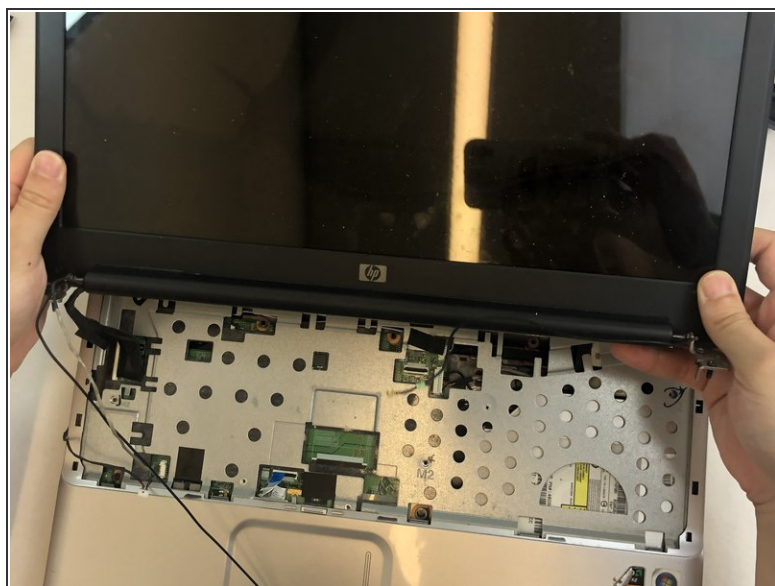
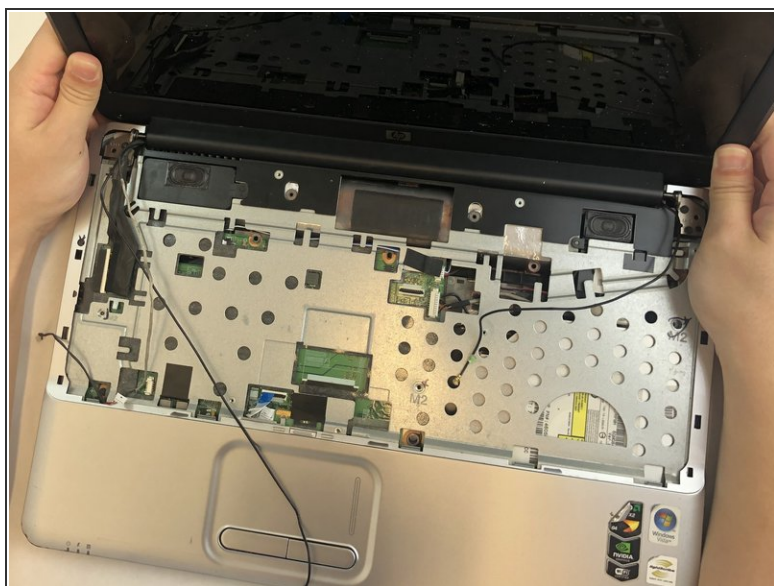
- Detach the white screen wiring on the bottom left side by gently pulling out.
 - Detach two black screen cables on the middle left side by gently pulling out the cables.
 - Pull out the black cable on the upper right side of the laptop.
- ⚠ Use gentle pressure while removing the wires.

Step 19



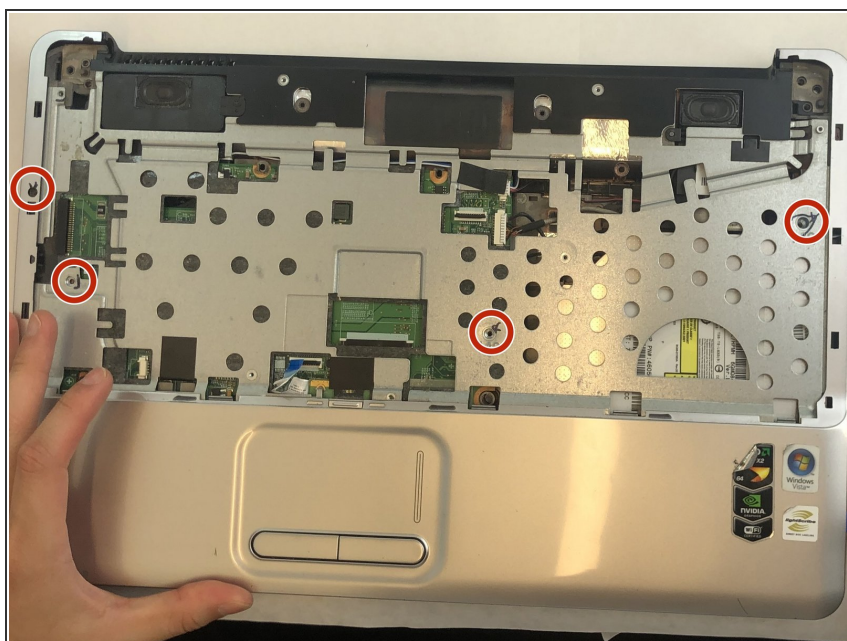
- Using the Phillips #0 screwdriver, remove the four 4.0 mm screws on both hinges of the laptop's screen.

Step 20



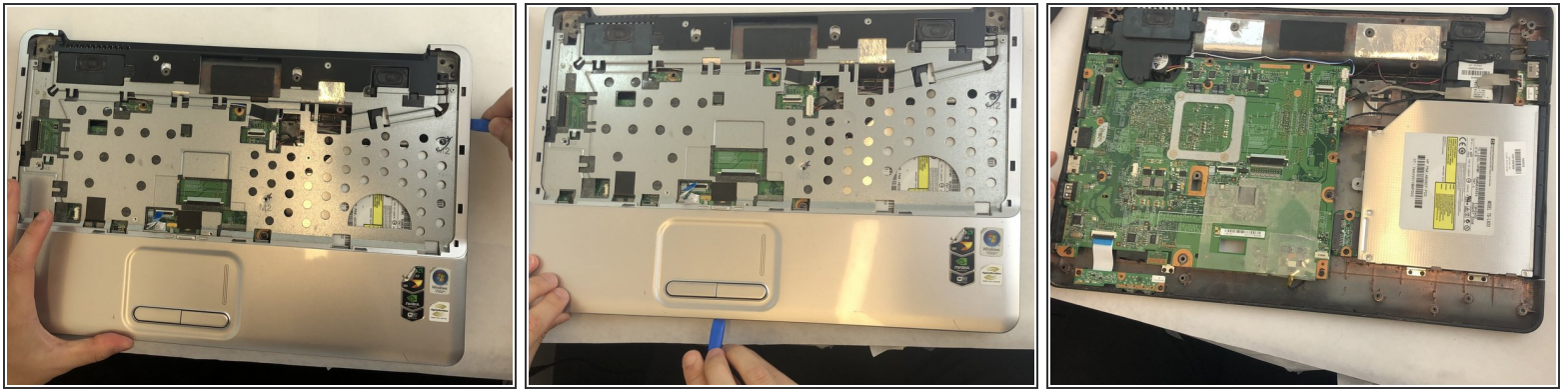
- Gently lift and detach the display assembly from the laptop's base.

Step 21 — Midframe



- Using the Phillips #0 screwdriver, remove the four 4mm screws from the midframe.

Step 22



- Using an opening tool, gently lift each corner of the midframe.
- ⚠ Use caution when applying pressure with the opening tool as it may break while attempting to lift the midframe.
- Detach and remove the midframe from the main body of the laptop.

To reassemble your device, follow these instructions in reverse order.