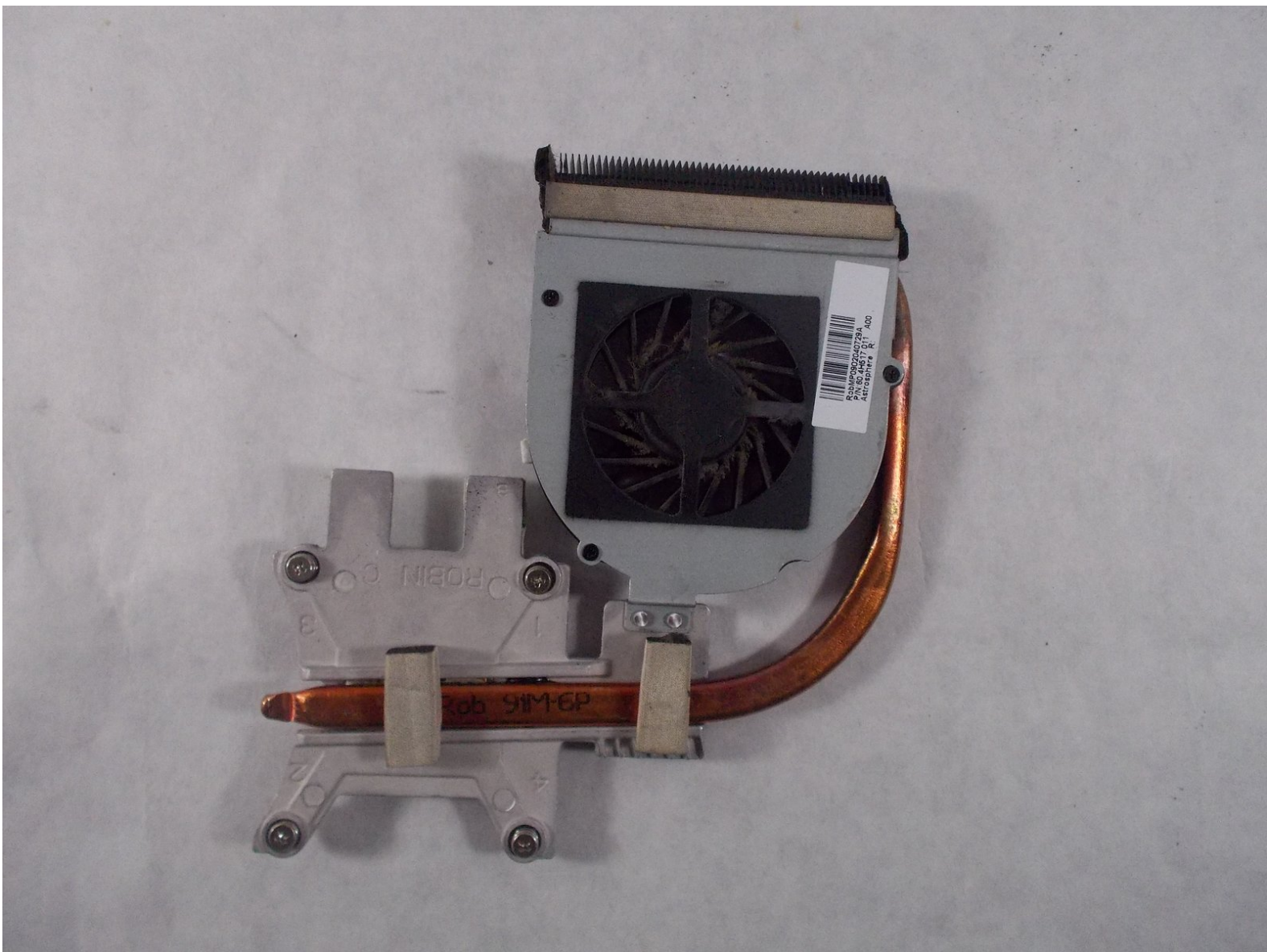




HP Pavilion G60-247CL Fan Replacement

If the computers fan is faulty it can lead to overheating or shutting down the computer. If you need to clean or replace a fan follow this guide.

Written By: Haley Matthews



INTRODUCTION

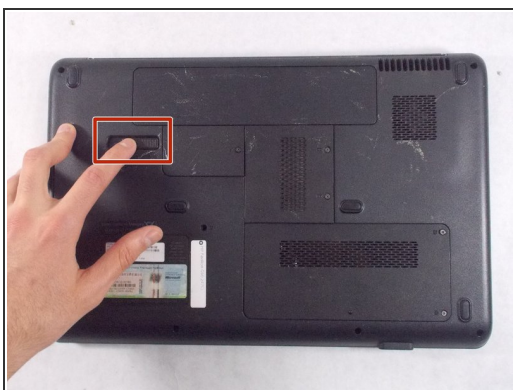
This guide will show you how to replace the fan of the HP Pavilion G60-247CL.



TOOLS:

- [Phillips #1 Screwdriver](#) (1)
 - [Precision Tweezers Set](#) (1)
 - [Spudger](#) (1)
 - [Phillips #0 Screwdriver](#) (1)
-

Step 1 — Battery



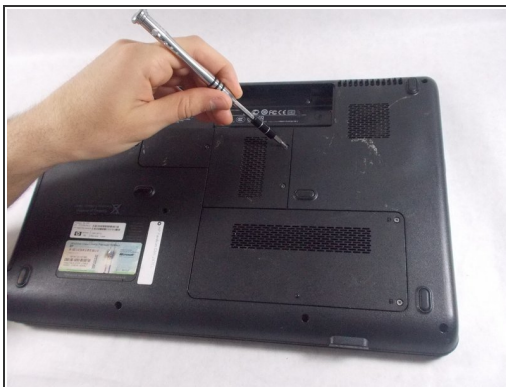
- Press down and to the right on the battery lock slide.
- Once slid over to the right the battery will pop up and out.

Step 2 — RAM



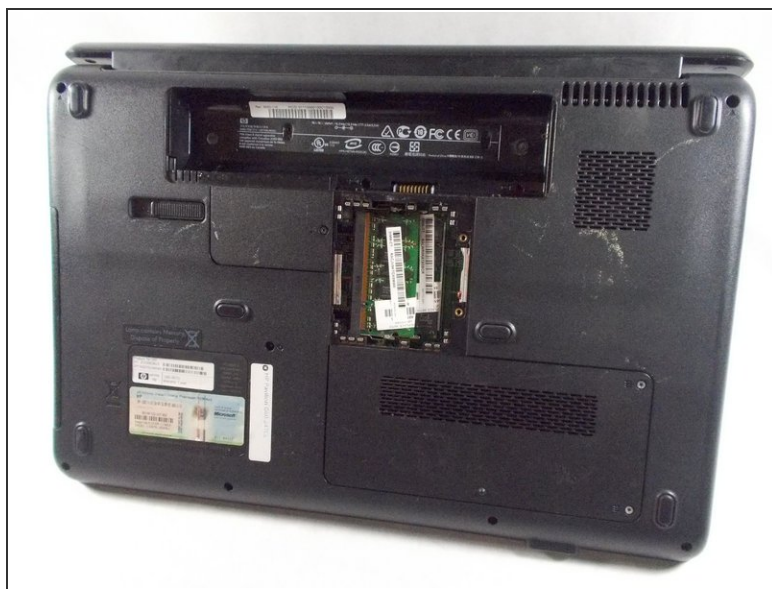
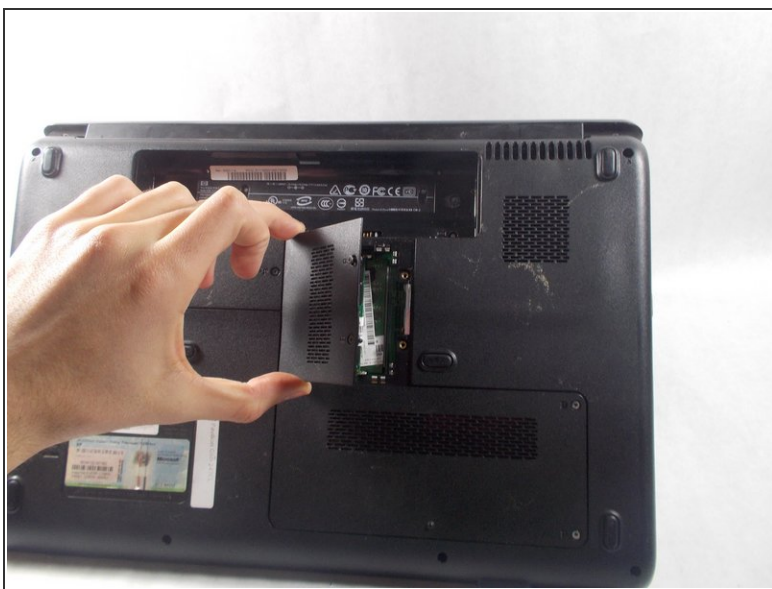
- Locate RAM access door on the bottom side of the laptop.

Step 3



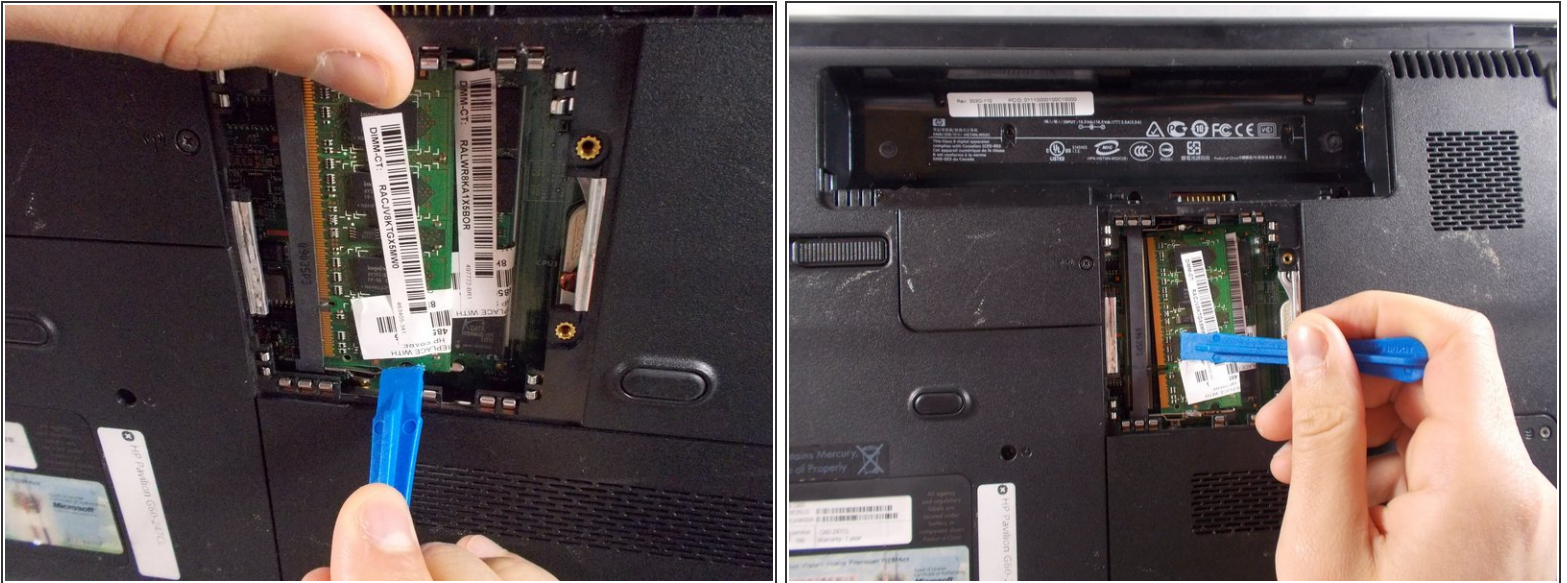
- Locate the two screws holding down the RAM access door.
- Unscrew the two screws with a size #1 Phillips screwdriver.

Step 4



- Lift up on the RAM cover and remove it to reveal RAM sticks.

Step 5



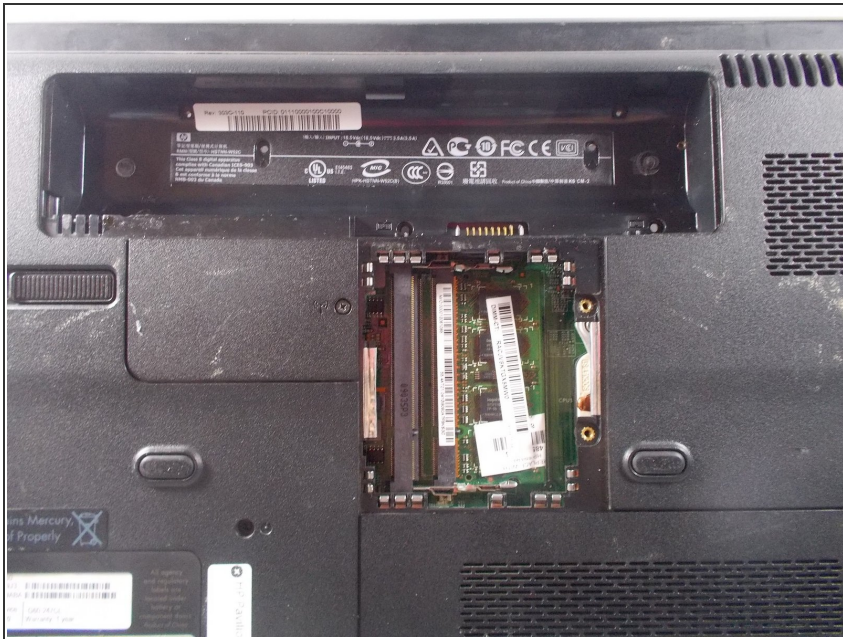
- Gently pull apart the two metal tabs located on both sides of the stick of RAM.

Step 6



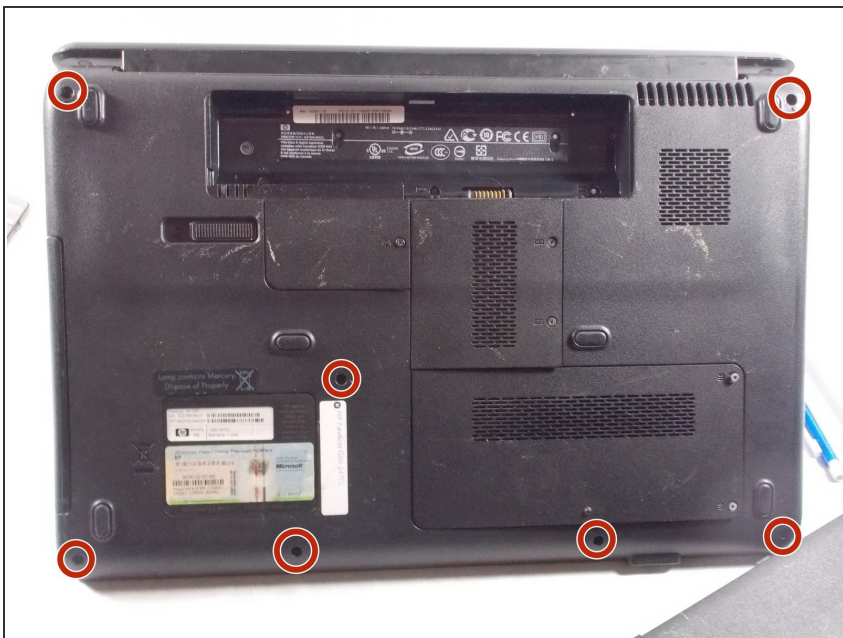
- Gently lift the RAM stick up and out of its seat.

Step 7



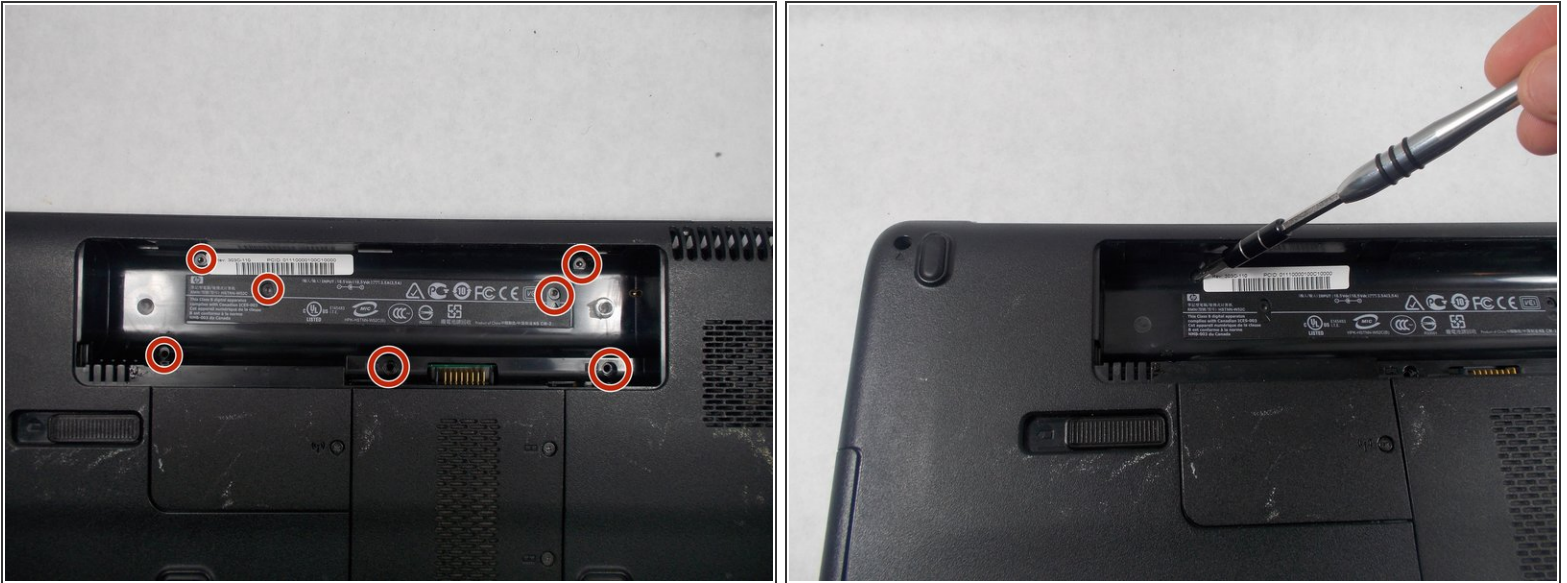
- Repeat the previous two steps for the remaining stick of RAM.

Step 8 — Screen



- Remove the seven Phillips #1 screws from the back side of the laptop.

Step 9



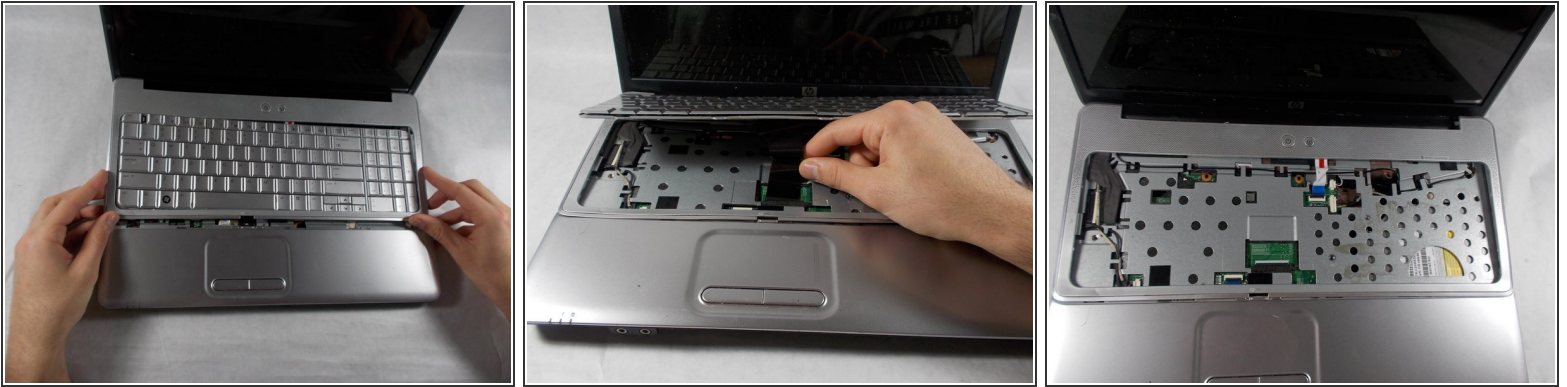
- Remove the seven Phillips #0 screws from the battery compartment.

Step 10



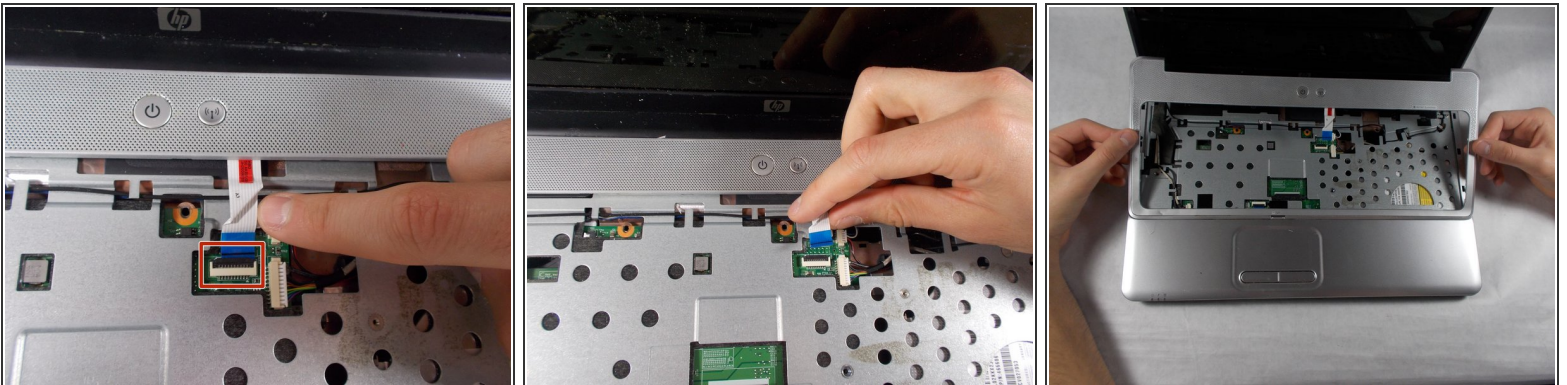
- Turn the computer around to the front side.
- Using an opening tool, prop open the keyboard casing.

Step 11



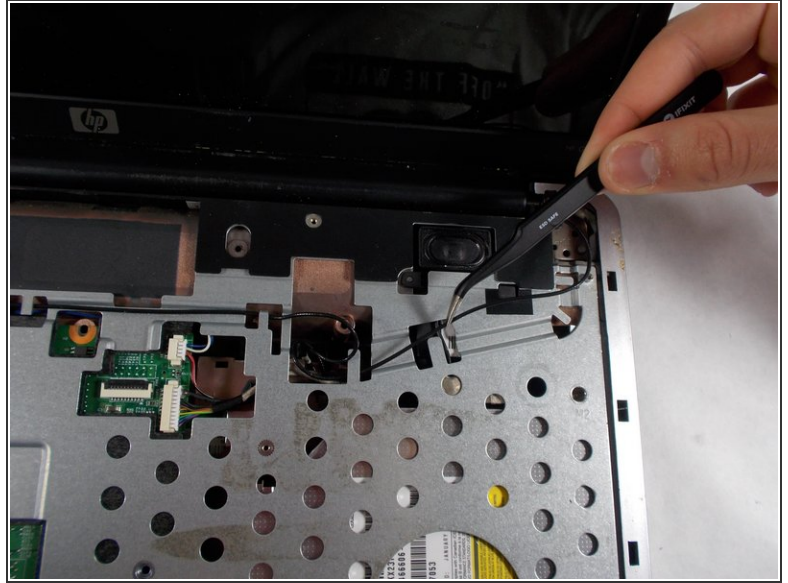
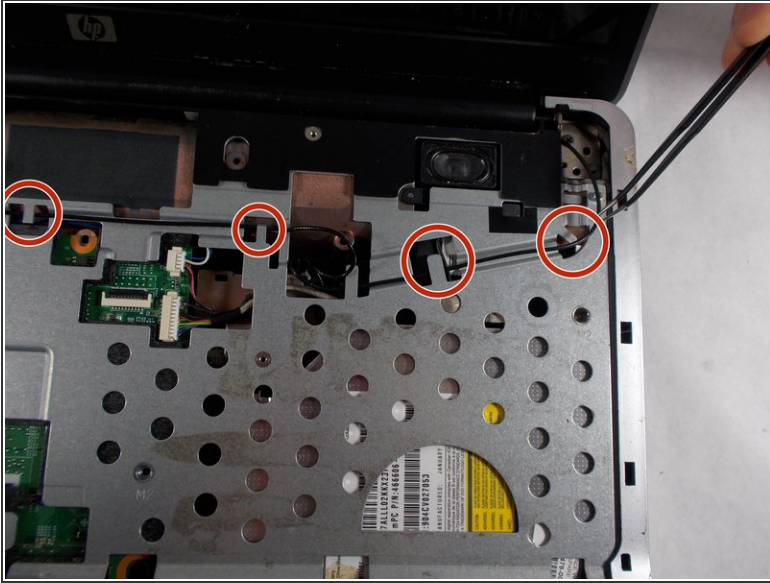
- Carefully lift up the keyboard.
- Gently pull up the connecting wire clip to completely detach the keyboard.

Step 12



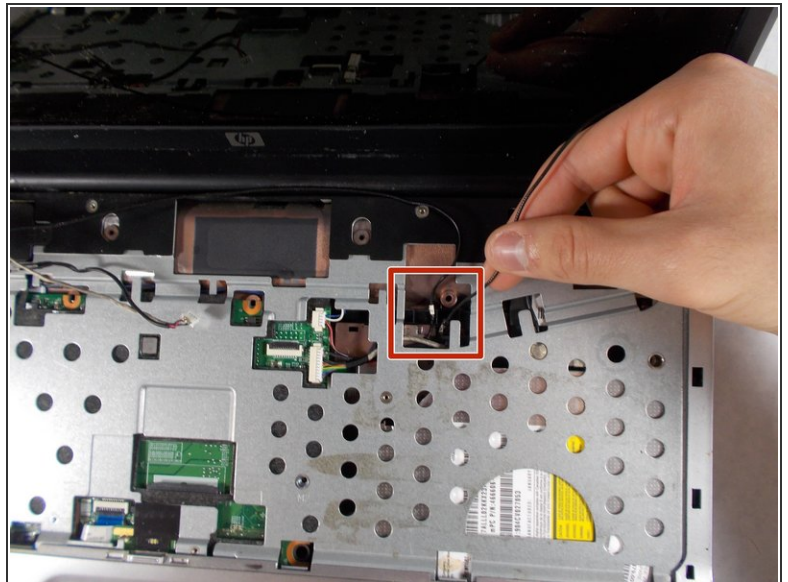
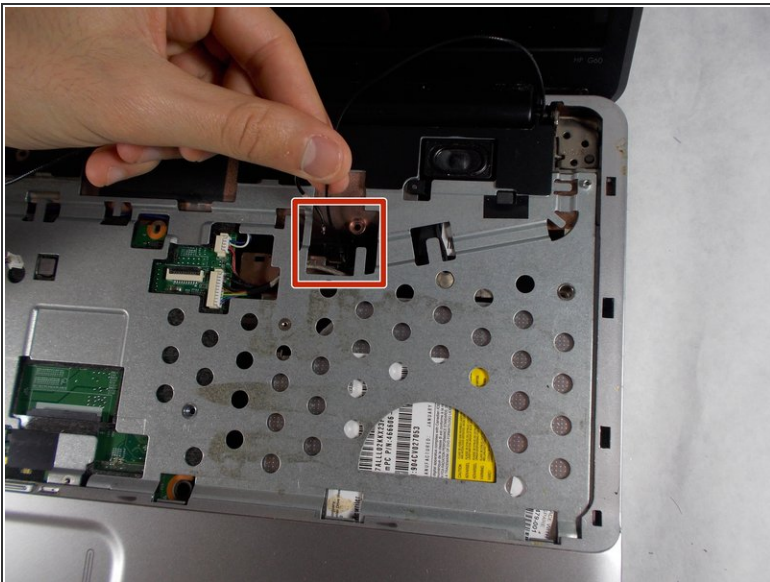
- At the top right of the laptop there will be another wire clip holding the keyboard casing.
- Carefully pull out the wire clip to fully detach the covering.

Step 13



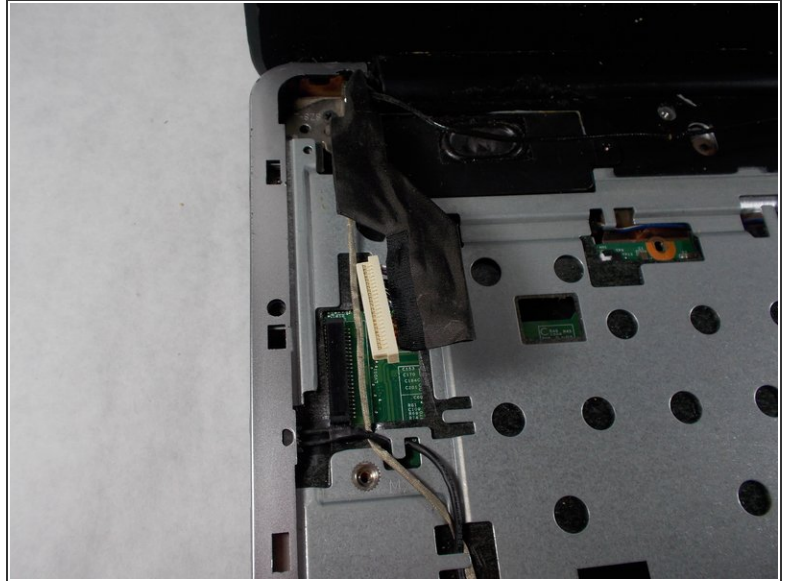
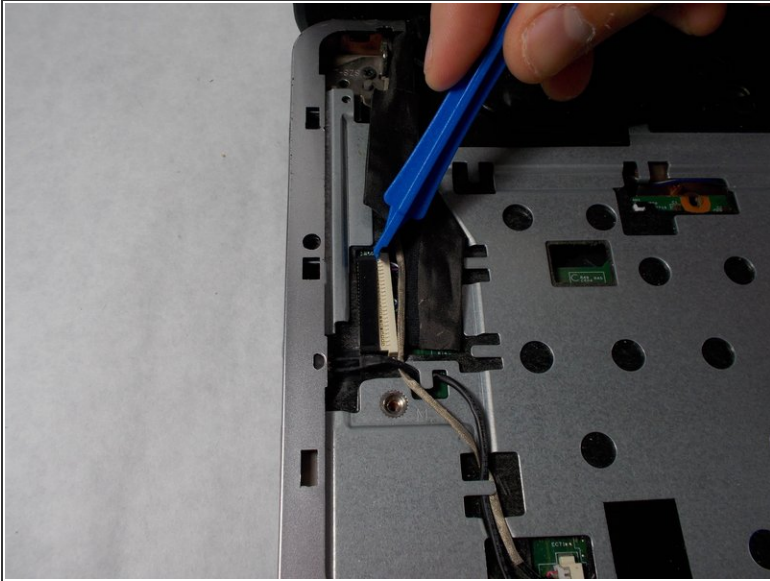
- At the top right of the laptop remove the black wire from under the metal tabs using the tweezers.

Step 14



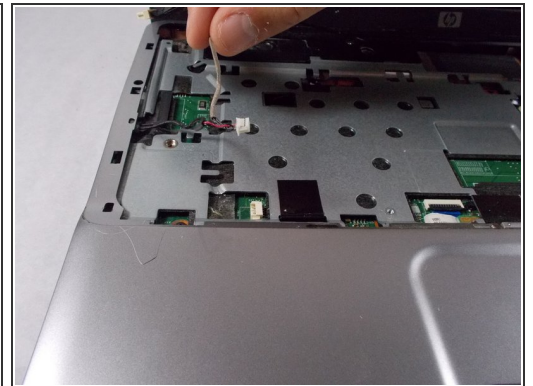
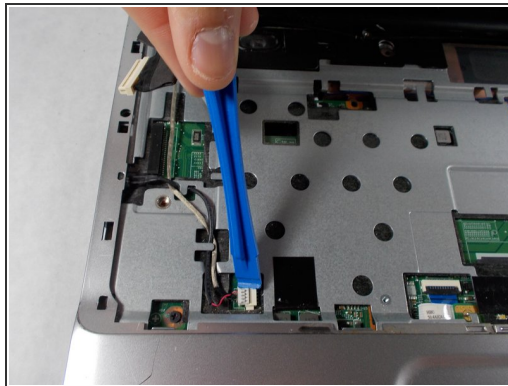
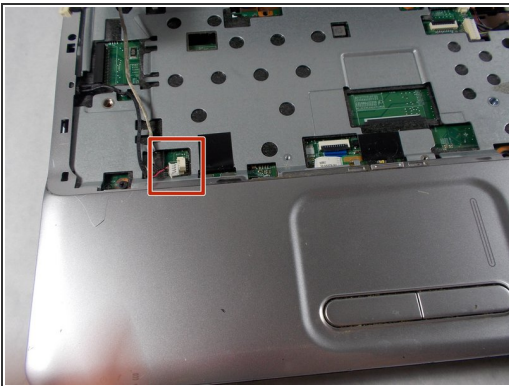
- Remove the black wire from the top right corner by gently pulling outward.

Step 15



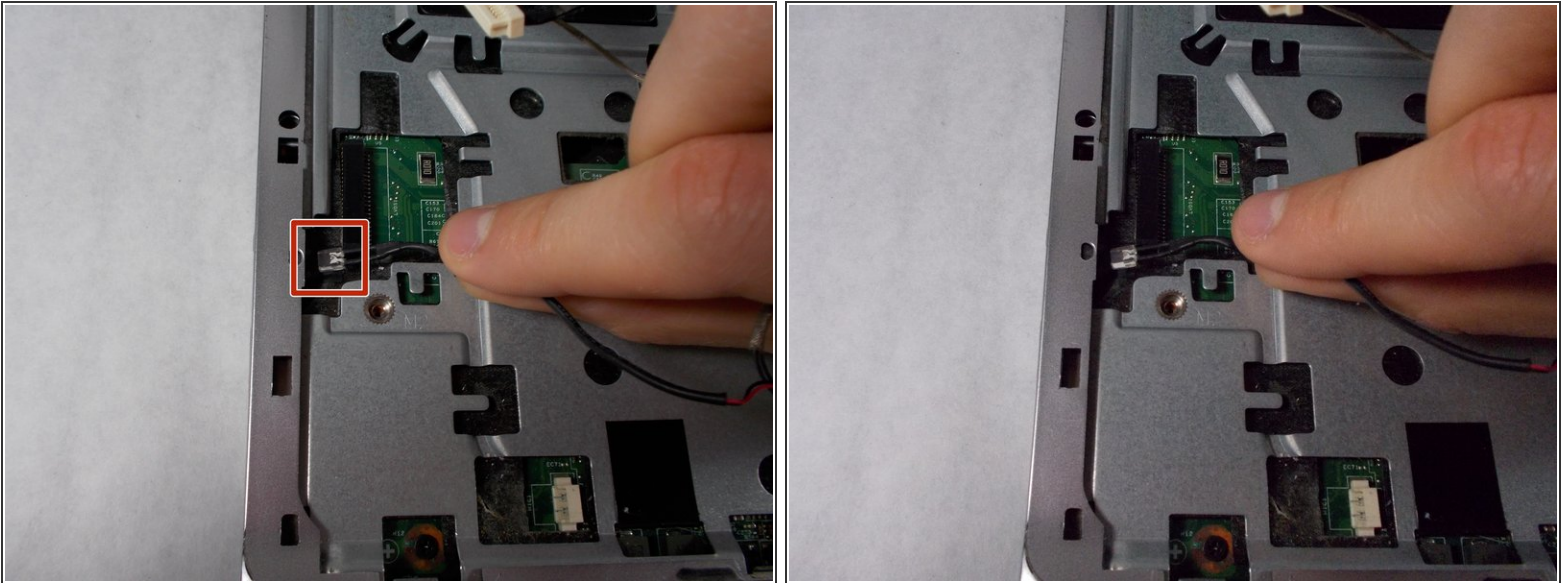
- At the top left of the computer remove the black clip using the opening tool.
- Push the opening tool to the right to pop out the clip.

Step 16



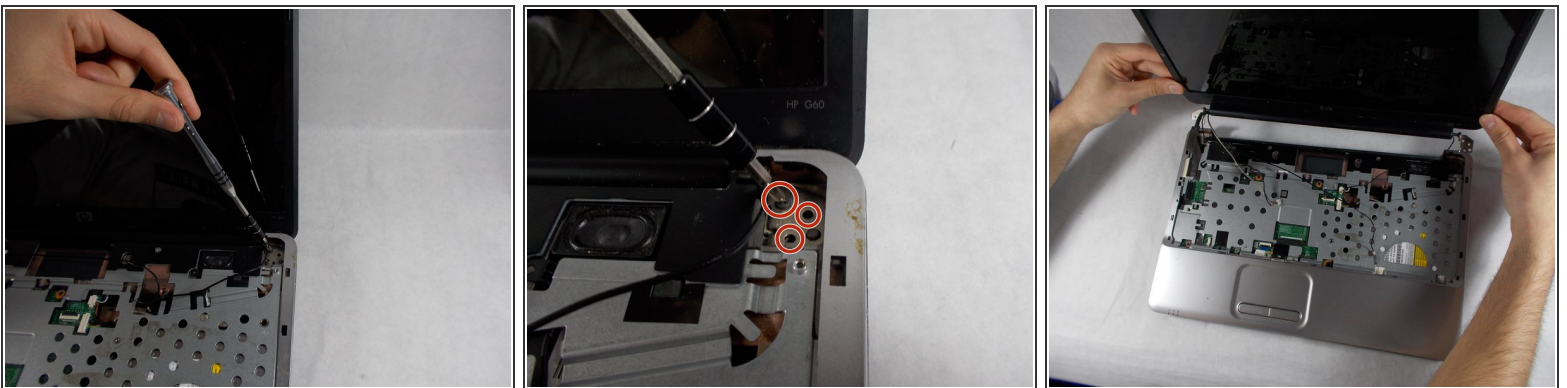
- Locate at the bottom left of the computer a white clip.
- Using an opening tool, prop out the white clip.

Step 17



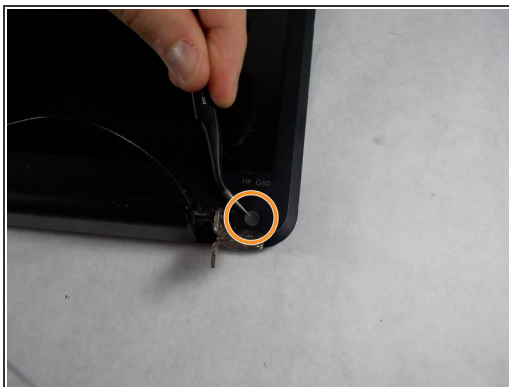
- On the left side of the computer locate the black wire with the clear clip.
- Gently pull the wire to the right to detach it.

Step 18



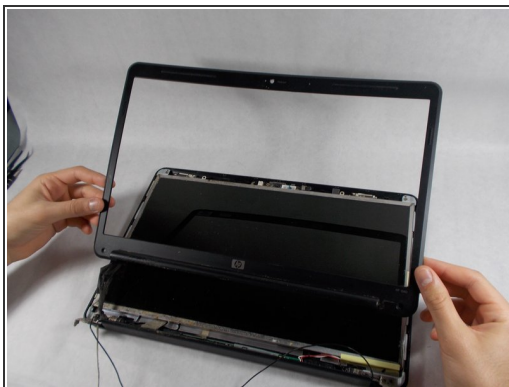
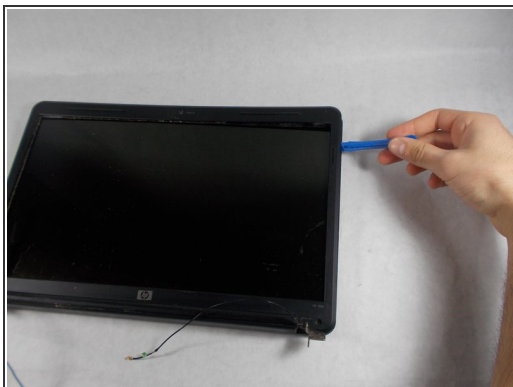
- At the top corners of the computer, unscrew the three Phillips #0 screws.
- Lift up the top half of the computer carefully.

Step 19



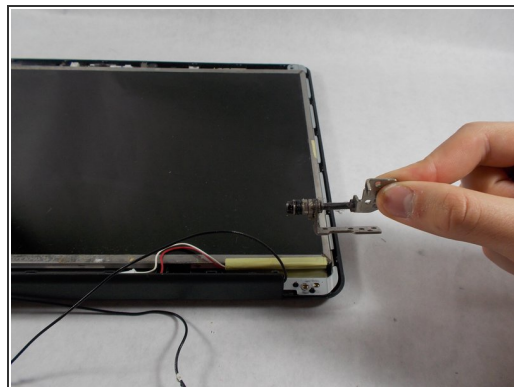
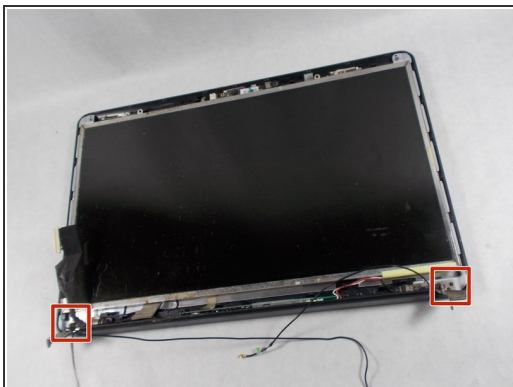
- Locate the two screws at the bottom corners of the screen.
- Using the tweezers remove the rubber black covering over the screw.
- Remove the two Phillips #0 screws.

Step 20



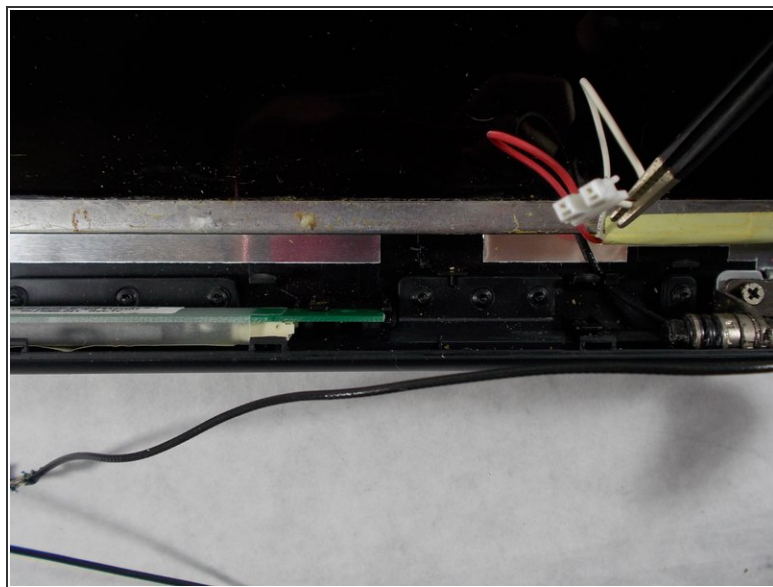
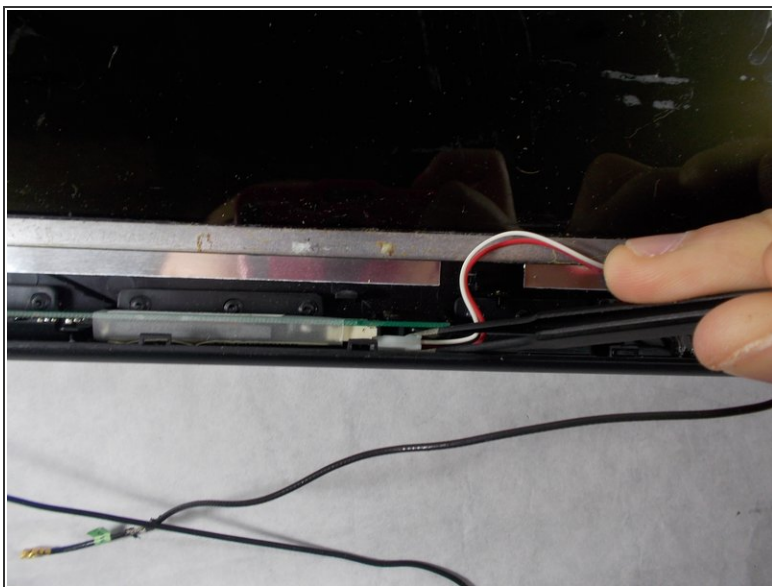
- Using the opening tool, prop off the screen covering.
- Remove the covering to expose the screen completely.

Step 21



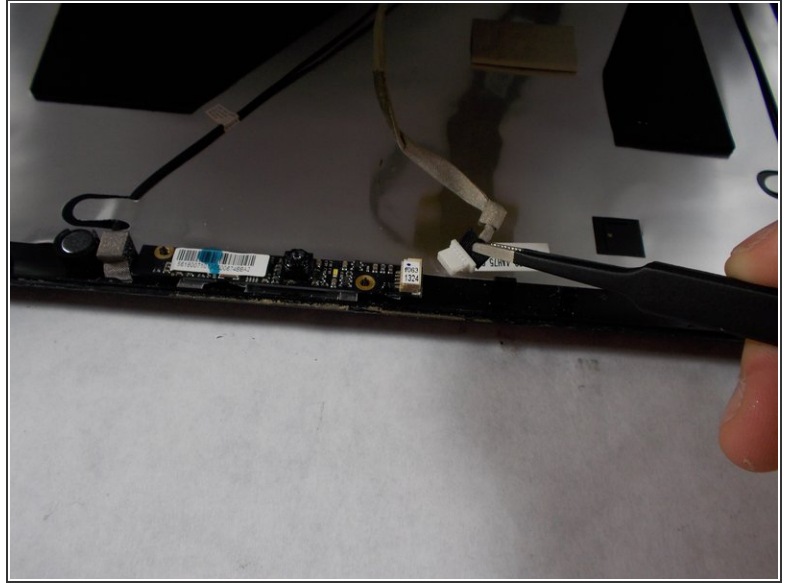
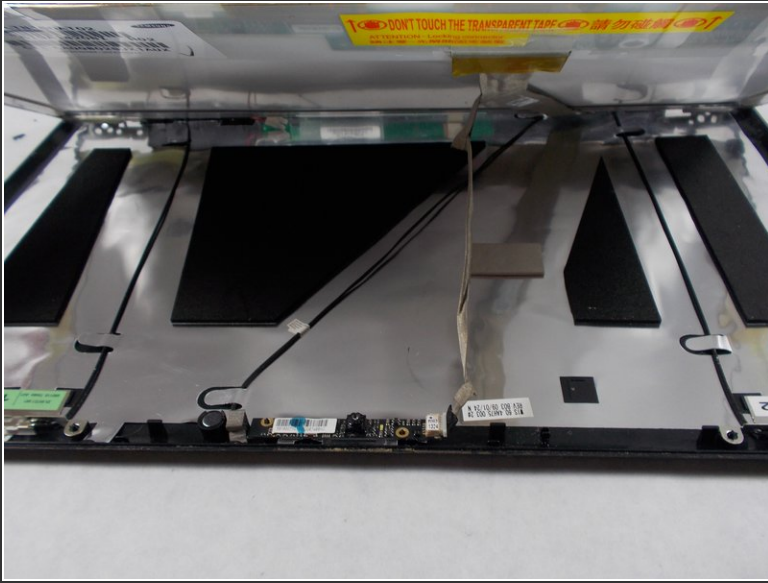
- Remove the bottom two screen bearings.
- Using a Phillips 1 screwdriver, remove the two screws on each side.

Step 22



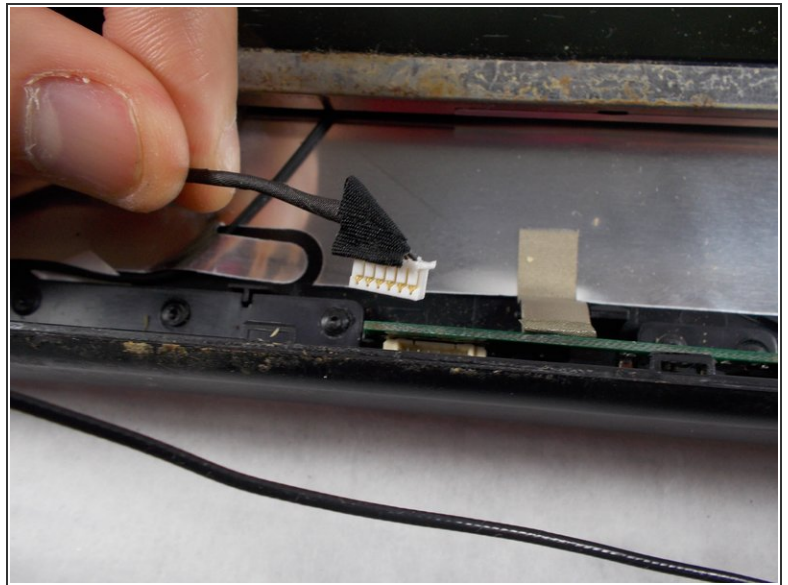
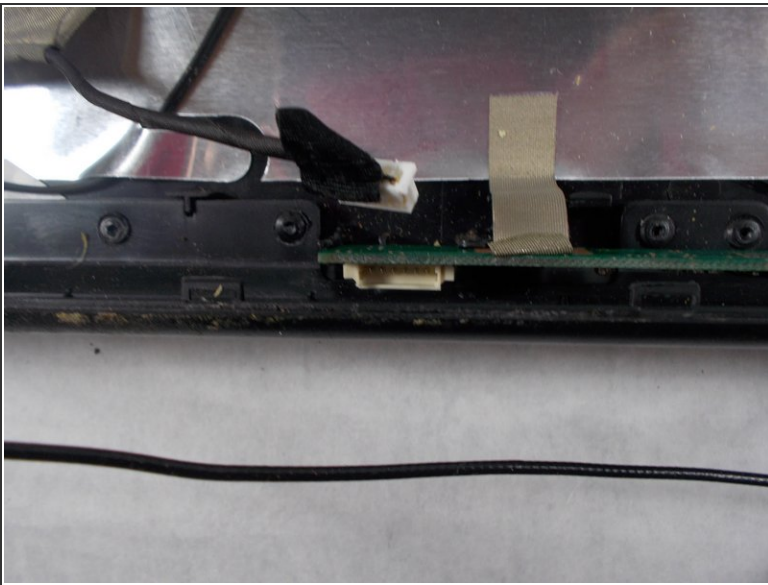
- Using the tweezers remove the red and white wire from the bottom of the screen.

Step 23



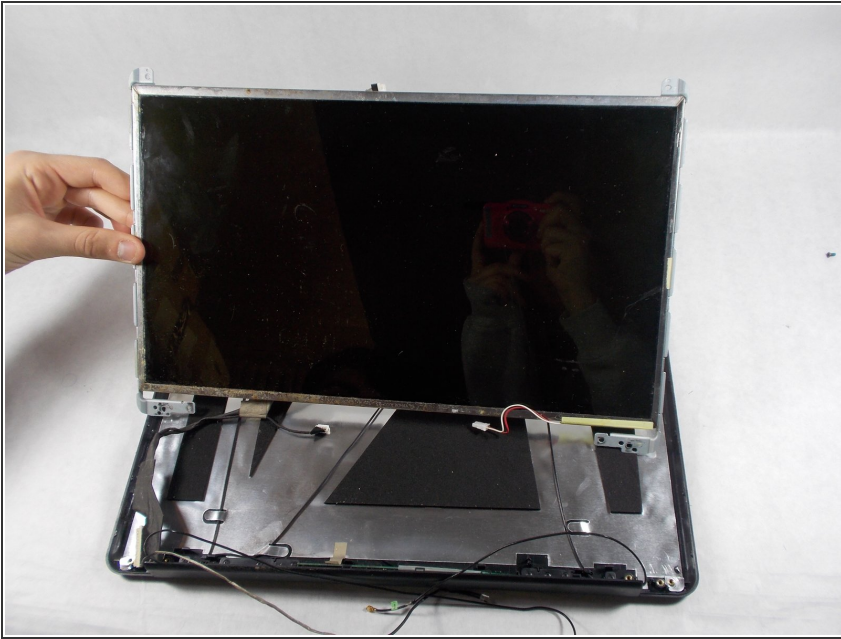
- Prop the screen up slightly .
- Using the tweezers unclip the white wire.

Step 24



- While the screen is still propped open remove the black wire from the bottom middle of the screen by pulling gently.

Step 25



- Remove the screen from the outer casing carefully.

Step 26 — Speakers



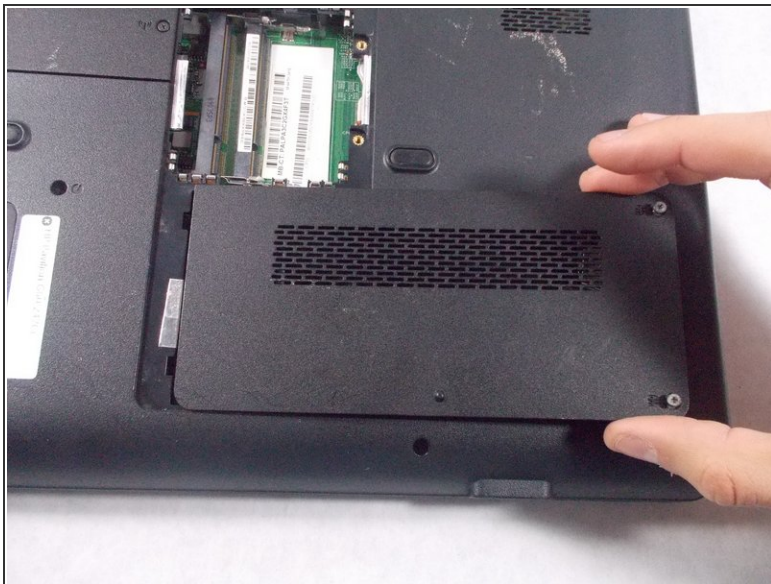
- With the battery and RAM removed, locate the hard drive access panel.

Step 27



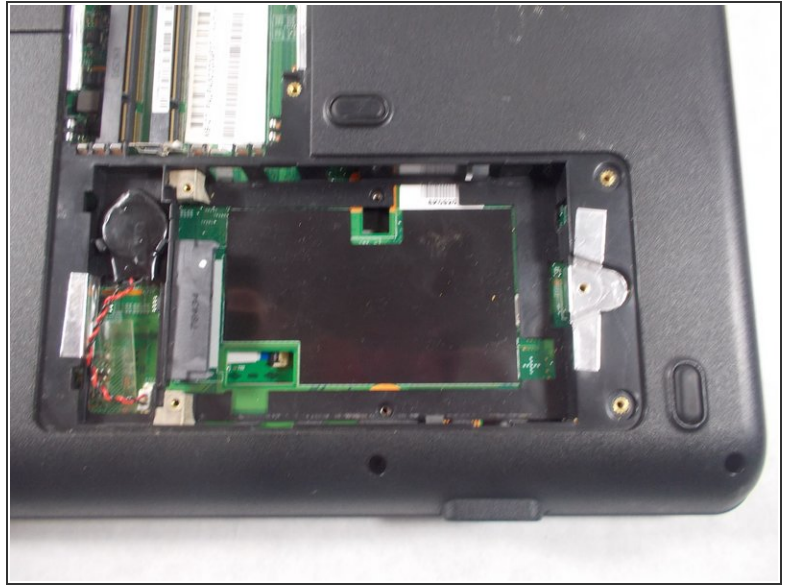
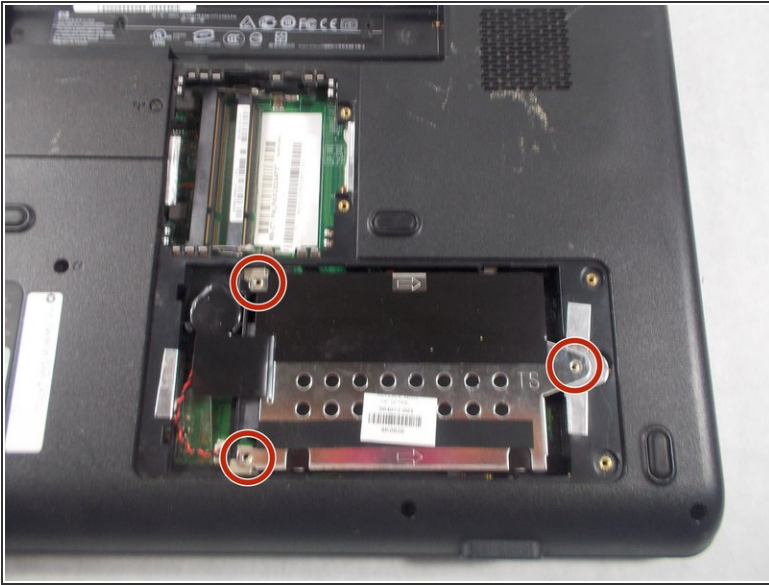
- Remove two 1.2 mm Philips#01 screws.

Step 28



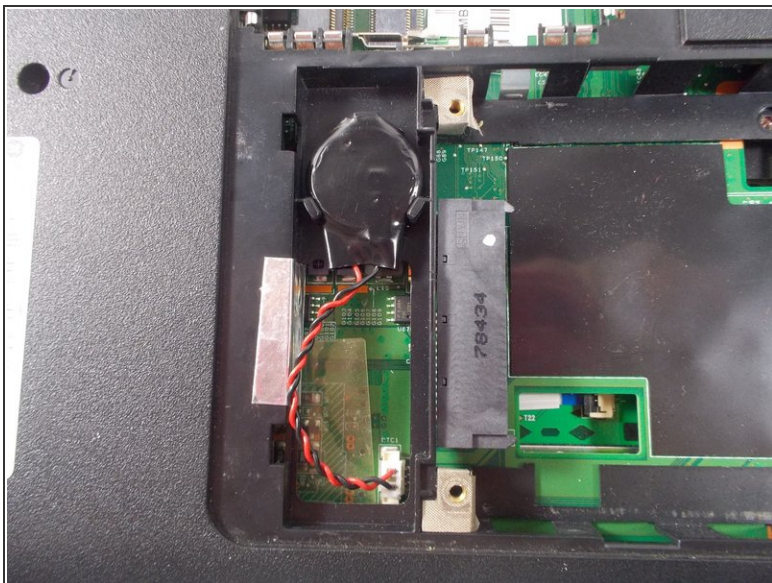
- After the screws are removed, slide the hard drive panel to right to remove it.

Step 29



- Identify the three screws holding the hard drives cover in place.
 - Remove each screw using a #0 Philips screwdriver to reveal the hard drive.
- i** This particular laptop does not contain a hard drive-- yours will.

Step 30



- Locate the storage battery, next to the hard drive.
- Gently pop out storage battery with fingers.

Step 31



- Locate the Wifi card cover panel, left of the RAM.
- Using a Philips #1 screwdriver remove the screw holding the panel down.

Step 32



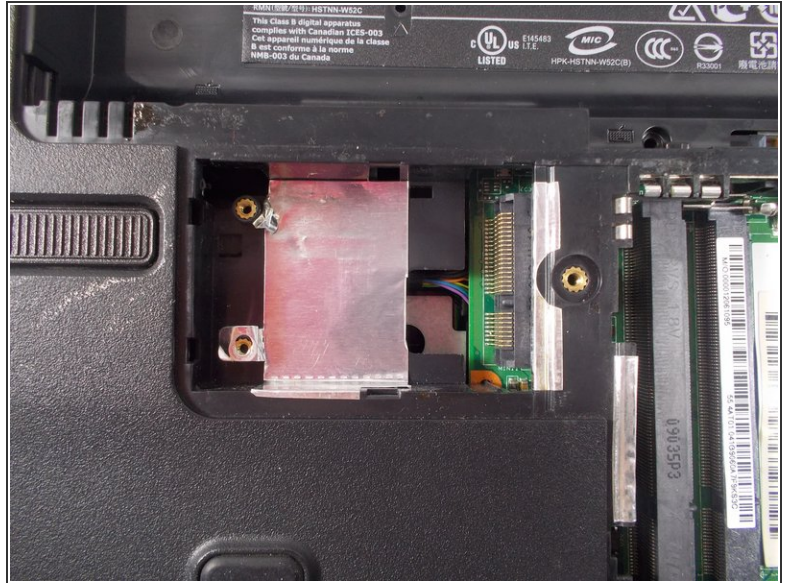
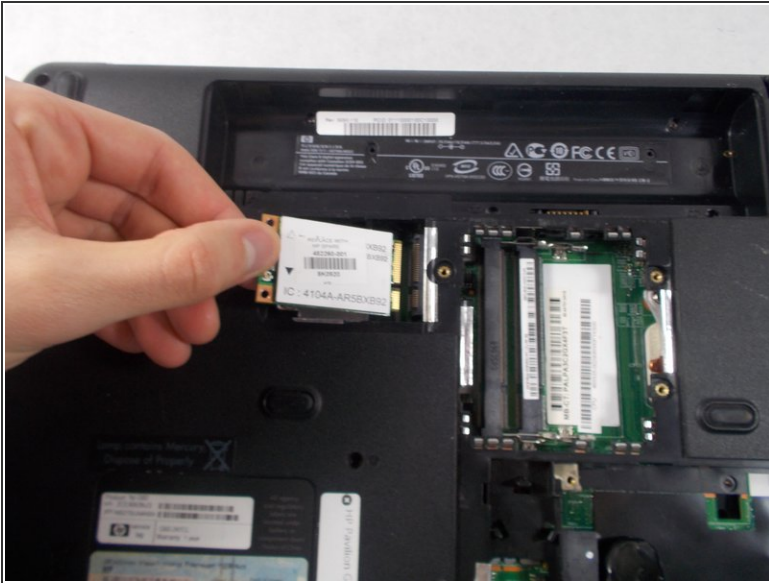
- Lift up on the screw side to remove the panel.

Step 33



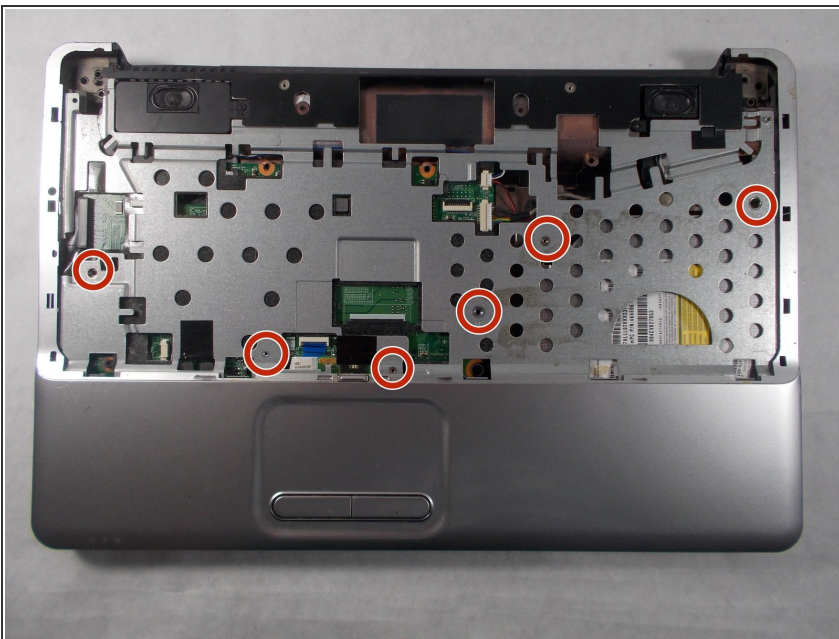
- Remove two 1.2 mm Philips#01 screws.
- As the screws are removed the Wifi card will pop up.

Step 34



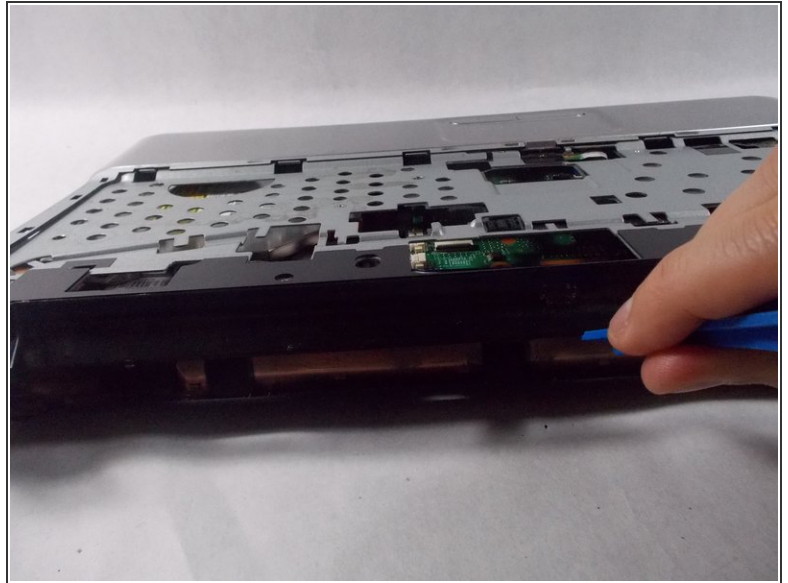
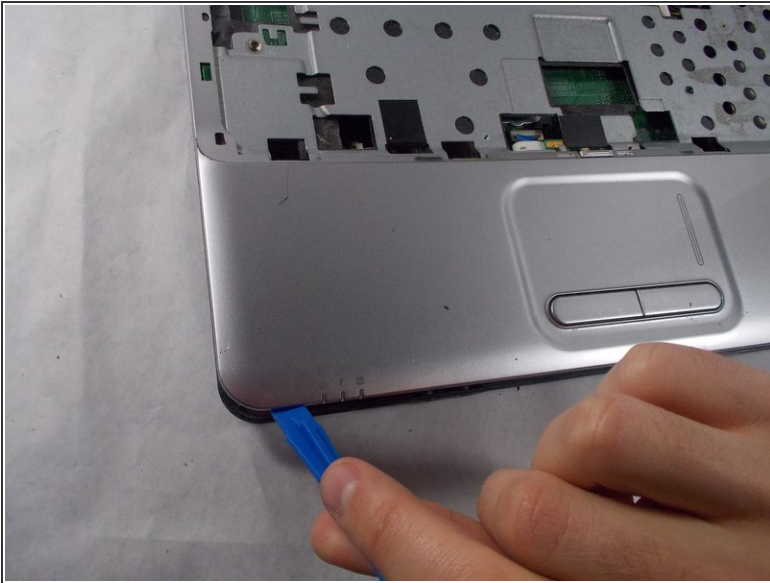
- Remove Wifi card by pulling to the left of the laptop.

Step 35



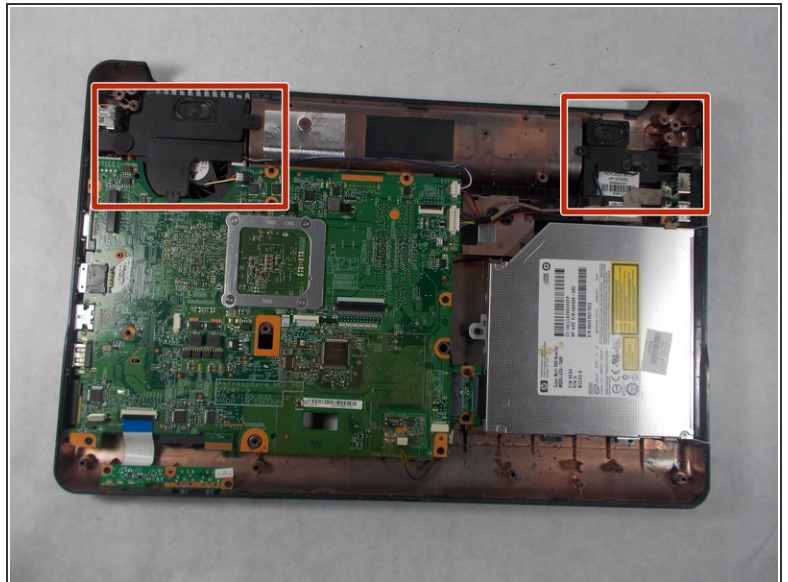
- Flip over to the top view
- Remove five 1.2 mm Philips#00 swrews

Step 36



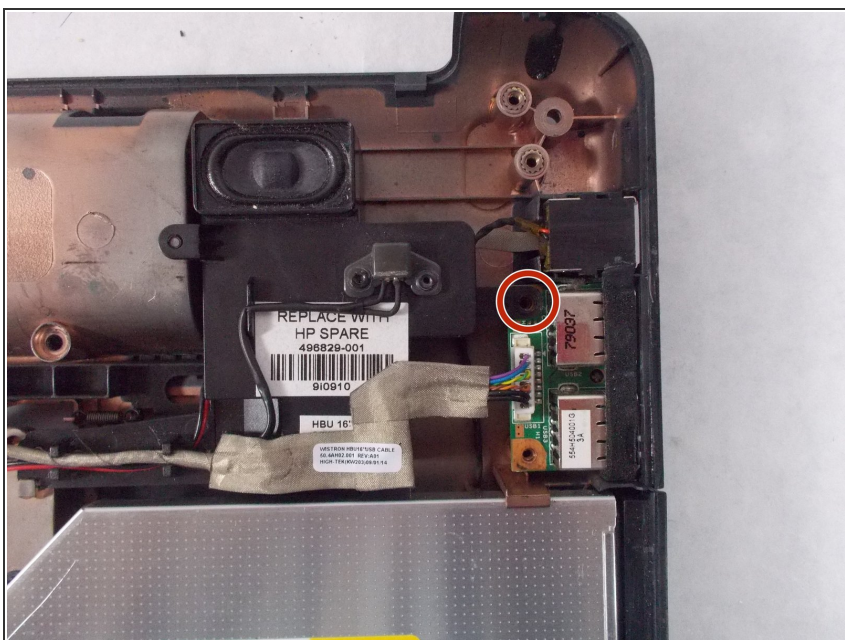
- Using a spudger unclip the casing around all corners and edges.

Step 37



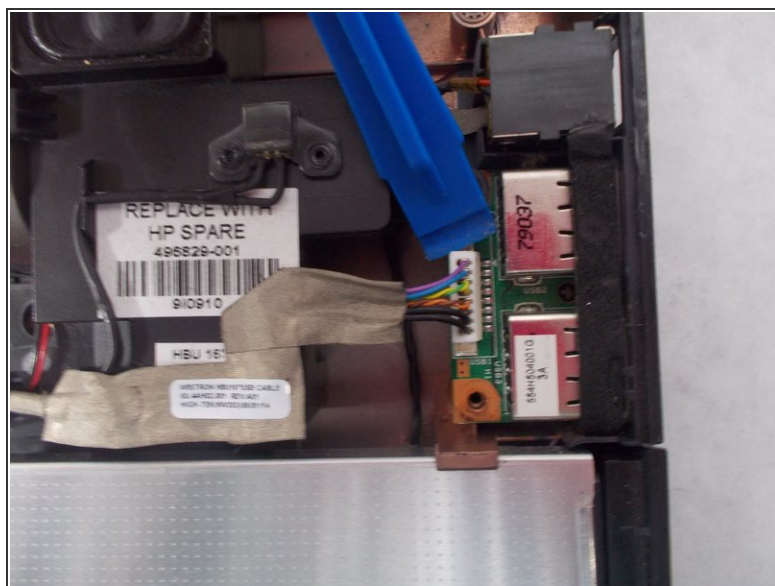
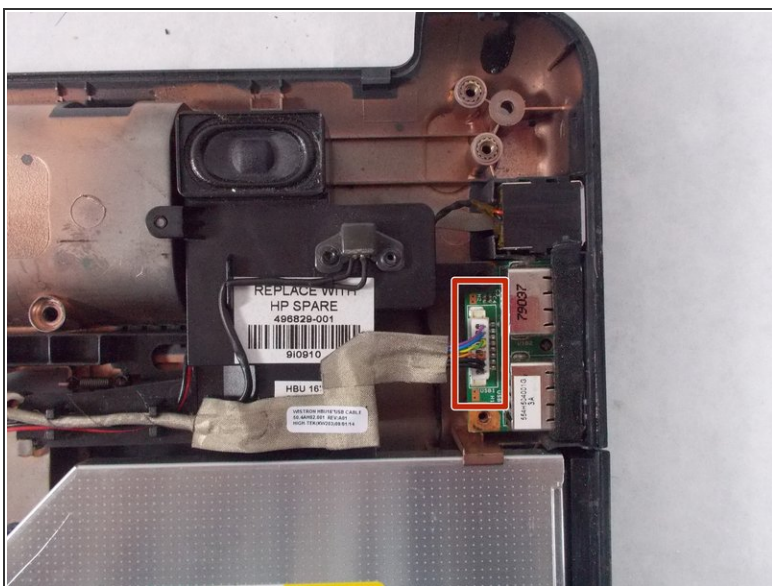
- lift up the casing and remove to reveal the speakers.

Step 38



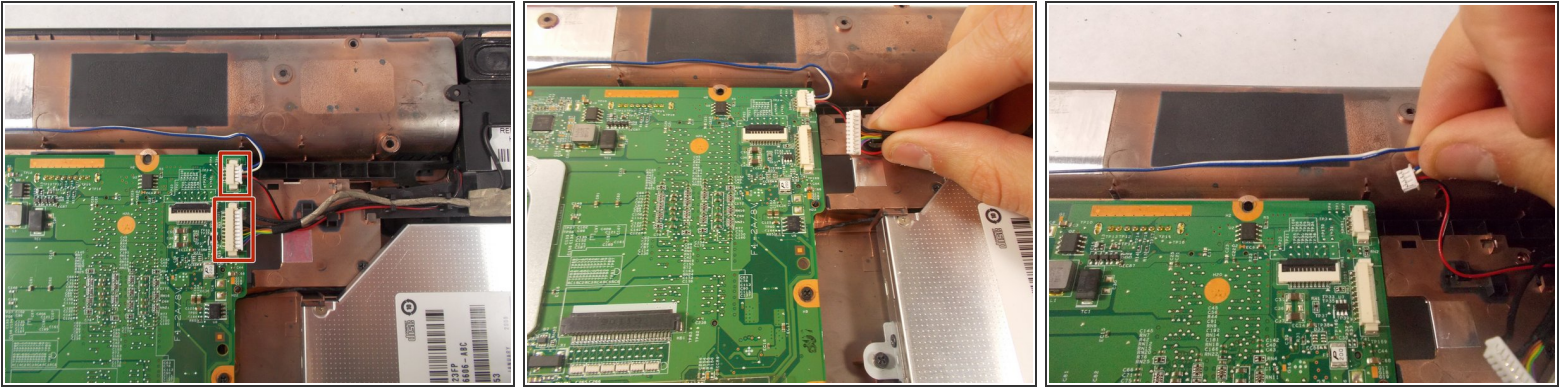
- Remove highlighted 1.2 mm Philips #00 screw from right speaker.

Step 39



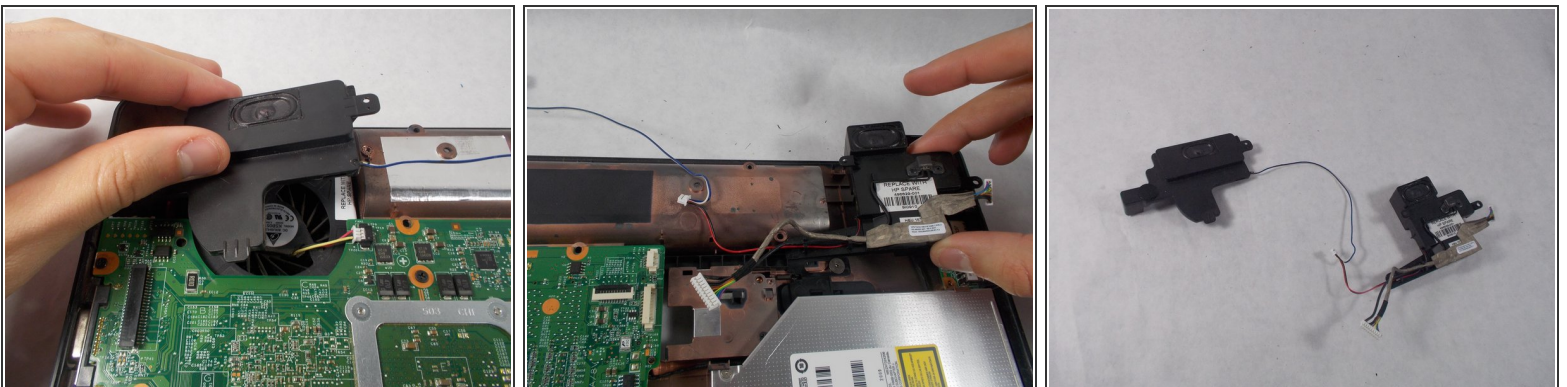
- Using a spudger, remove the highlighted white wire.

Step 40



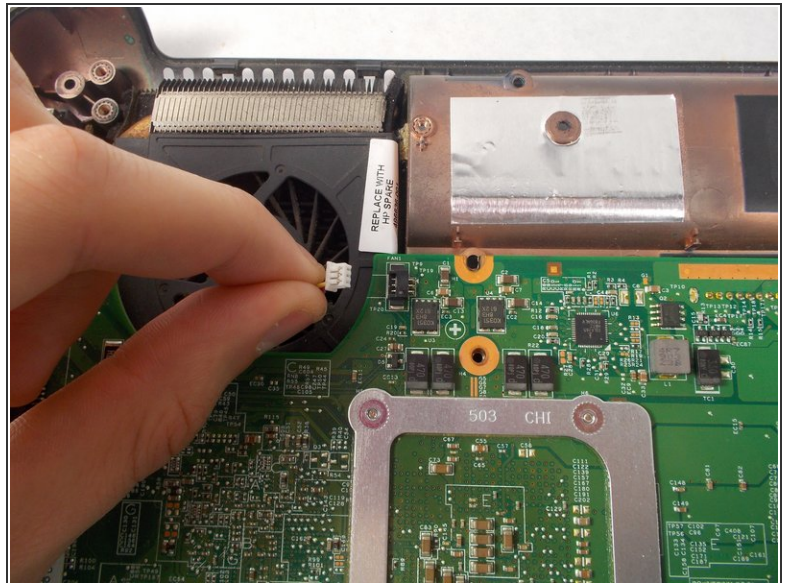
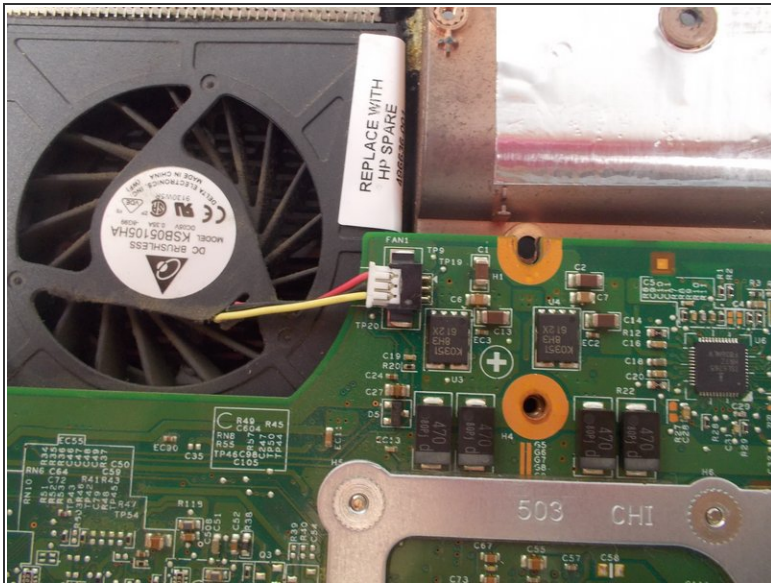
- Using a spudger, remove both additional highlighted wires from the motherboard.

Step 41



- Lift up and out each speaker from the base.

Step 42 — Fan



- Locate the fan in the top left corner.
- Carefully remove the wire attached to the mother board, using a spudger.

Step 43



- Locate the disk player in the bottom right corner.
- Remove three Philips #00 screws.

Step 44



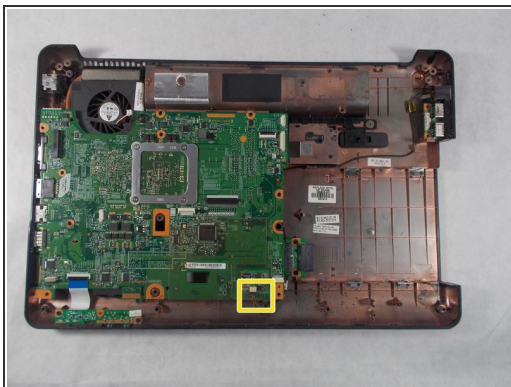
- Slide out the disk player to the right.

Step 45



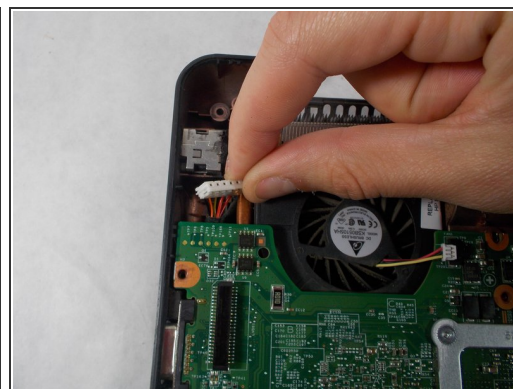
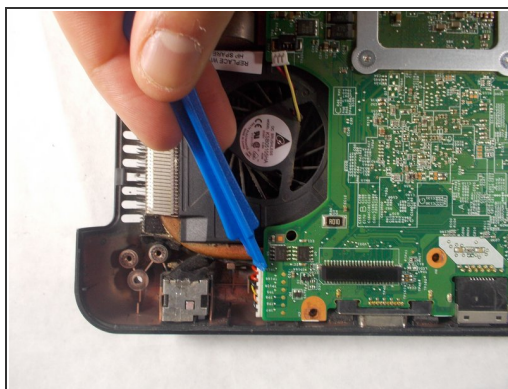
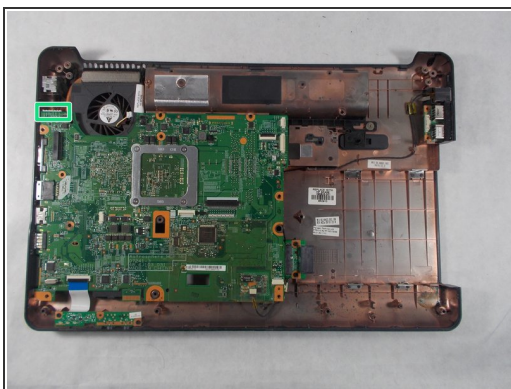
- Gently remove highlighted wire using a spudger.

Step 46



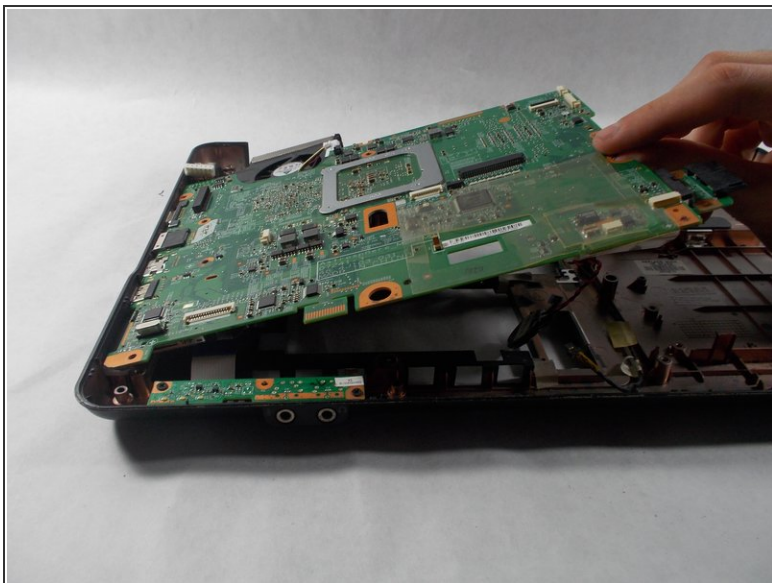
- Remove highlighted wire connected to motherboard by gently yanking downwards.

Step 47



- Remove last highlighted wire connected to the motherboard, using a spudger.

Step 48



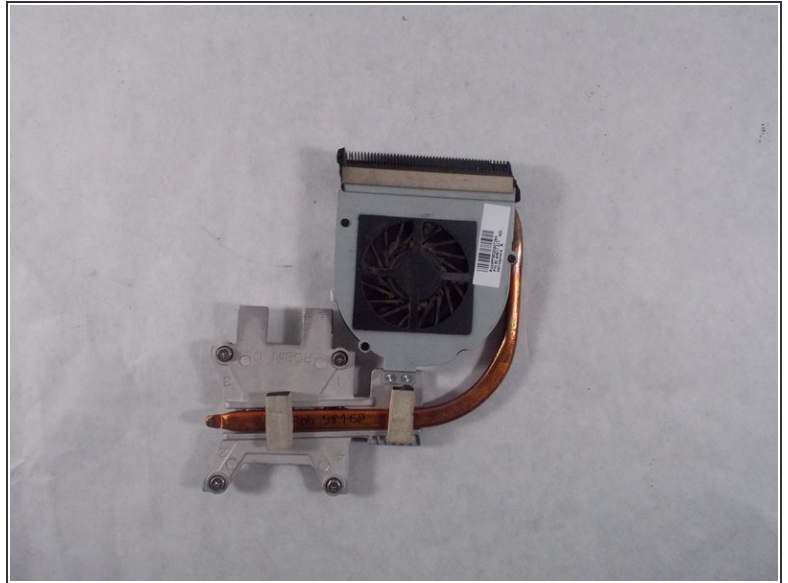
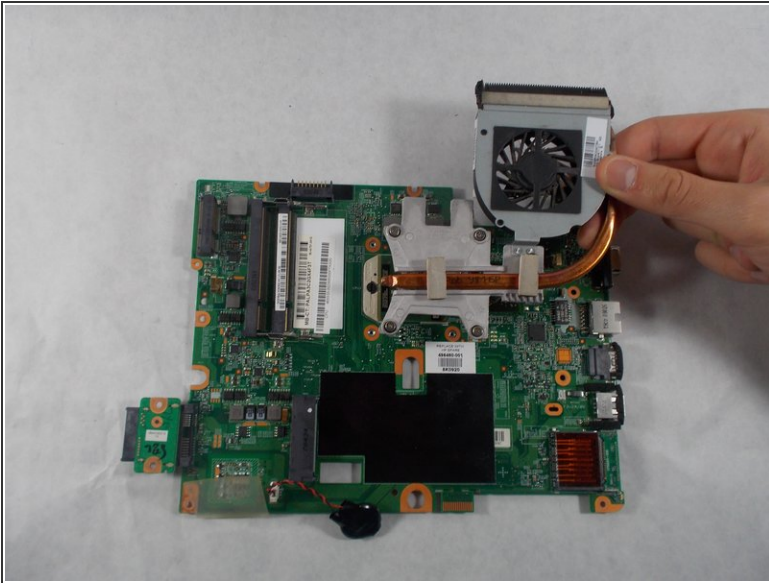
- Gently remove motherboard with fan from the shell.

Step 49



- Flip over the motherboard to view the back side.
- Remove four 1.6 mm Philips #01 screws.

Step 50



- Gently lift out the fan.

To reassemble your device, follow these instructions in reverse order.