



HP Pavilion G60-630US Hard Drive Replacement

This guide will demonstrate how to replace the hard drive.

Written By: Nicole Welter



INTRODUCTION

The hard drive is a high-capacity storage device that is installed within the laptop. It permanently stores and recovers data from the laptop. Over time the hard drive can slow down the processing speed of the laptop. In order to fix this problem, the hard drive will need to be replaced. This guide will show how to properly replace the hard drive.



TOOLS:

- [Phillips #0 Screwdriver](#) (1)

J0

Step 1 — Battery



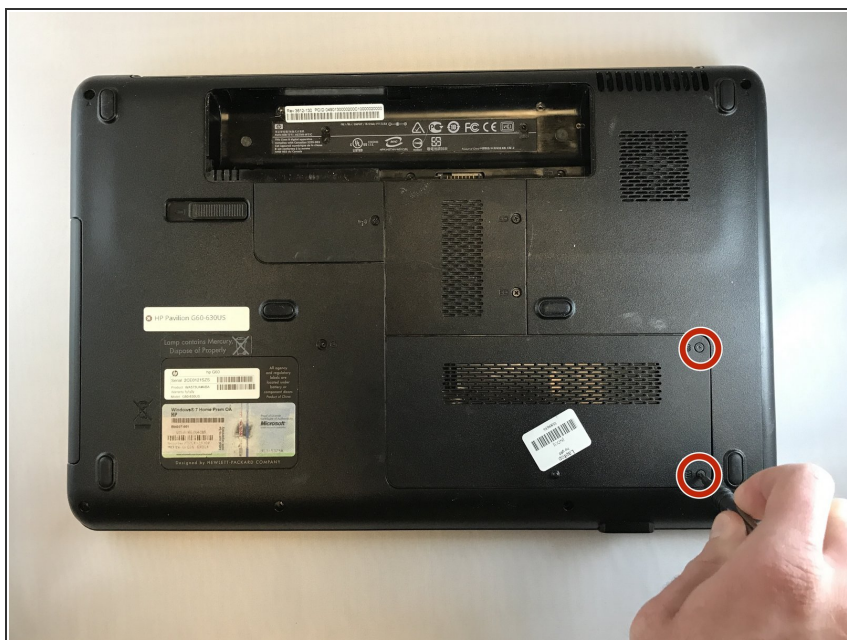
- i Make sure the laptop is powered off and unplugged first.
 - Turn your laptop over so the bottom is facing up.
 - Locate the battery latch and slide the latch switch all the way to the left.
- i The latch will lock and stay in place.

Step 2



- Carefully lift the battery out and away from the laptop.

Step 3 — Hard Drive



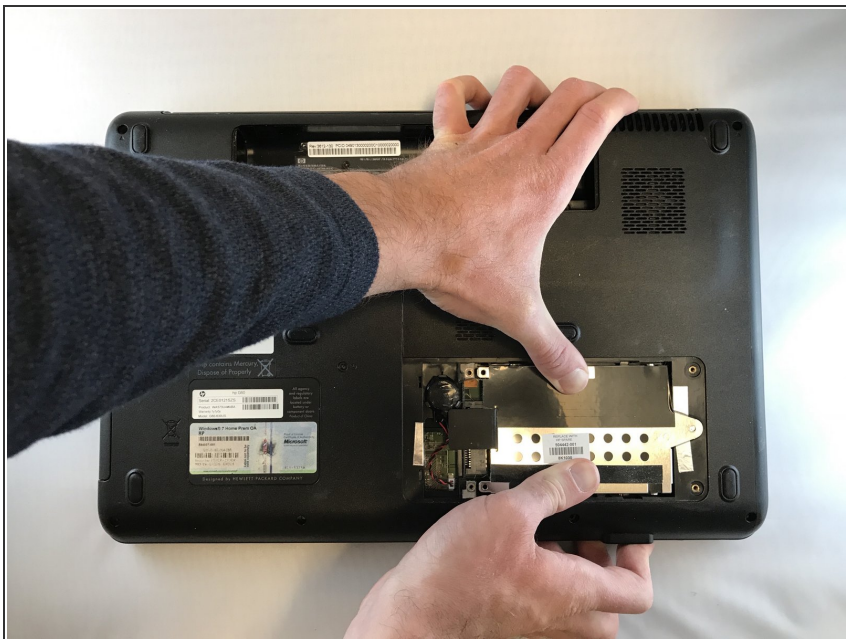
- Remove the two 5.5 mm JIS#0 screws from the hard drive cover.
- Remove cover from the back of the laptop.

Step 4



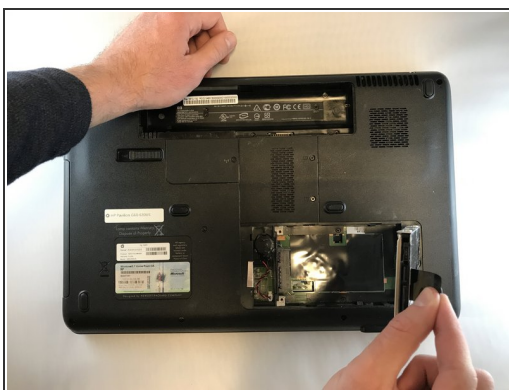
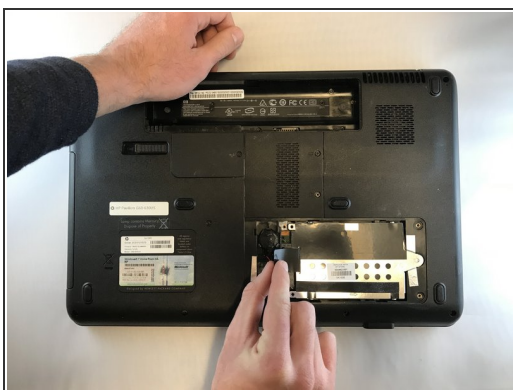
- Remove three 5.5 mm JIS#0 screws.

Step 5



- Gently, slide the whole hard drive to the right with your fingers.

Step 6



- Lift up on black tap attached to the hard drive to remove the hard drive.

To reassemble your device, follow these instructions in reverse order.