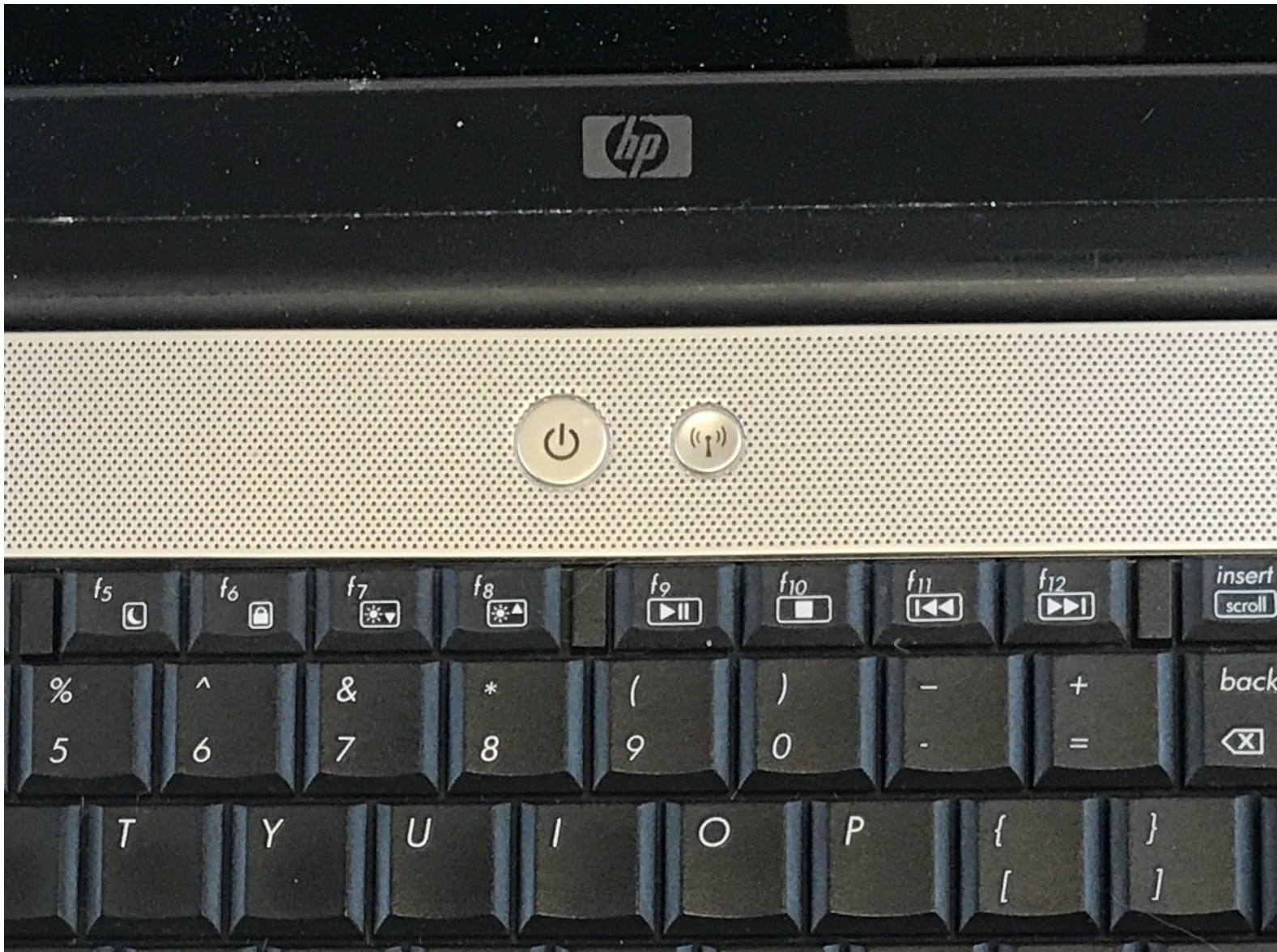




# HP Pavilion G60-630US Power Button Replacement

Replace broken/not working power button on your laptop.

Written By: [deleted]



## INTRODUCTION

The power button may not be turning on the laptop. There may be a disconnect of wires or the power bar chip may be defective. If the power button is not working or broken and it needs to be replaced, the following steps show how to replace the components that make the power button work.

---

### TOOLS:

- [Phillips #0 Screwdriver](#) (1)
  - [Spudger](#) (1)
-

## Step 1 — Battery



- i Make sure the laptop is powered off and unplugged first.
- Turn your laptop over so the bottom is facing up.
- Locate the battery latch and slide the latch switch all the way to the left.
- i The latch will lock and stay in place.

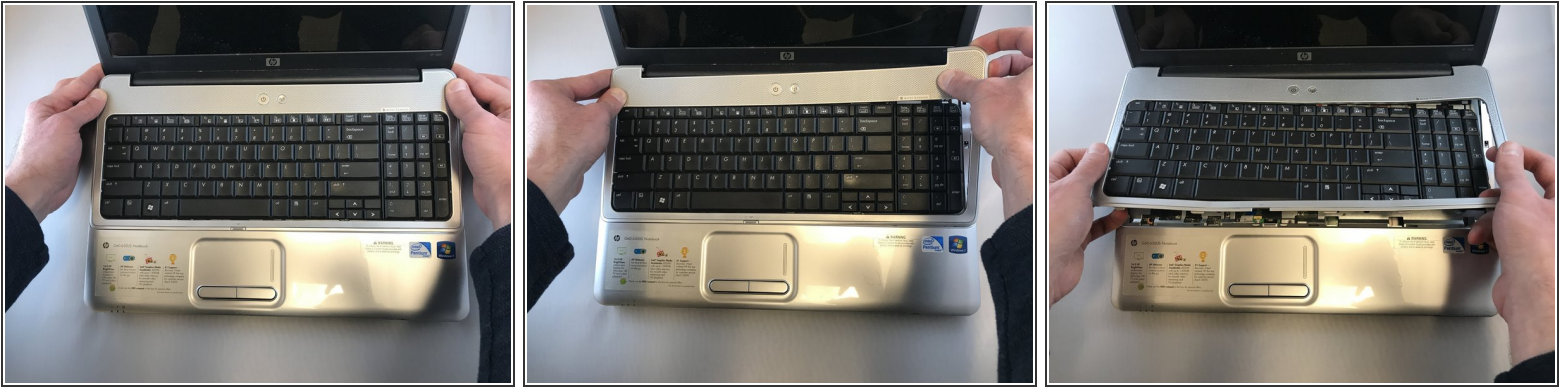
## Step 2



- Carefully lift the battery out and away from the laptop.



## Step 3 — Power Button



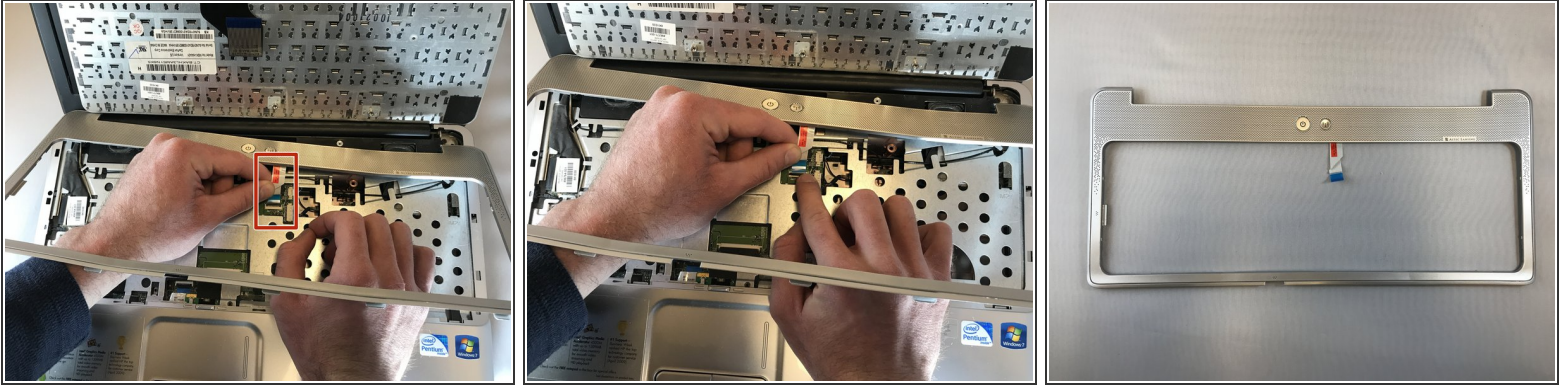
- Open the laptop normally.
- Using your fingers (or a spudger if needed), loosen the silver cover surrounding the keyboard.
- ⓘ You will not be able to fully remove the keyboard/silver border all the way until the next step.

## Step 4



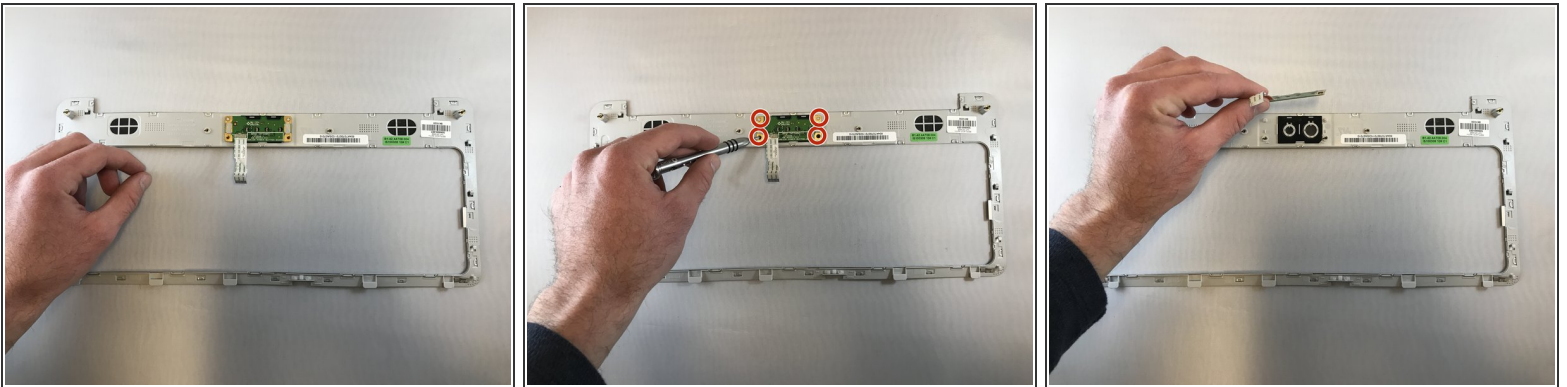
- Carefully place your hands underneath the now loosened keyboard and locate the ribbon keeping the keyboard connected to the laptop.
- Locate the tabs keeping the ribbon in place.
- Gently push the tabs inward to release the ribbon and to detach the keyboard.
- Carefully remove the keyboard and place it off to the side.
- ⓘ The silver border and the power button will still be connected by a different ribbon.

## Step 5



- Locate the ribbon keeping the power button attached to the laptop.
- Push the tab attaching the ribbon to the laptop to detach the silver border and the power button.

## Step 6



***i* If you are looking at this in the HP Pavilion G60-630US Screen Replacement Guide, ignore this step**

- Flip the silver border over to expose the underside of the power bar.
- Unscrew the 4 screws keeping the power bar in place. Place the screws off the the side.
- Carefully remove the power bar.

To reassemble your device, follow these instructions in reverse order.