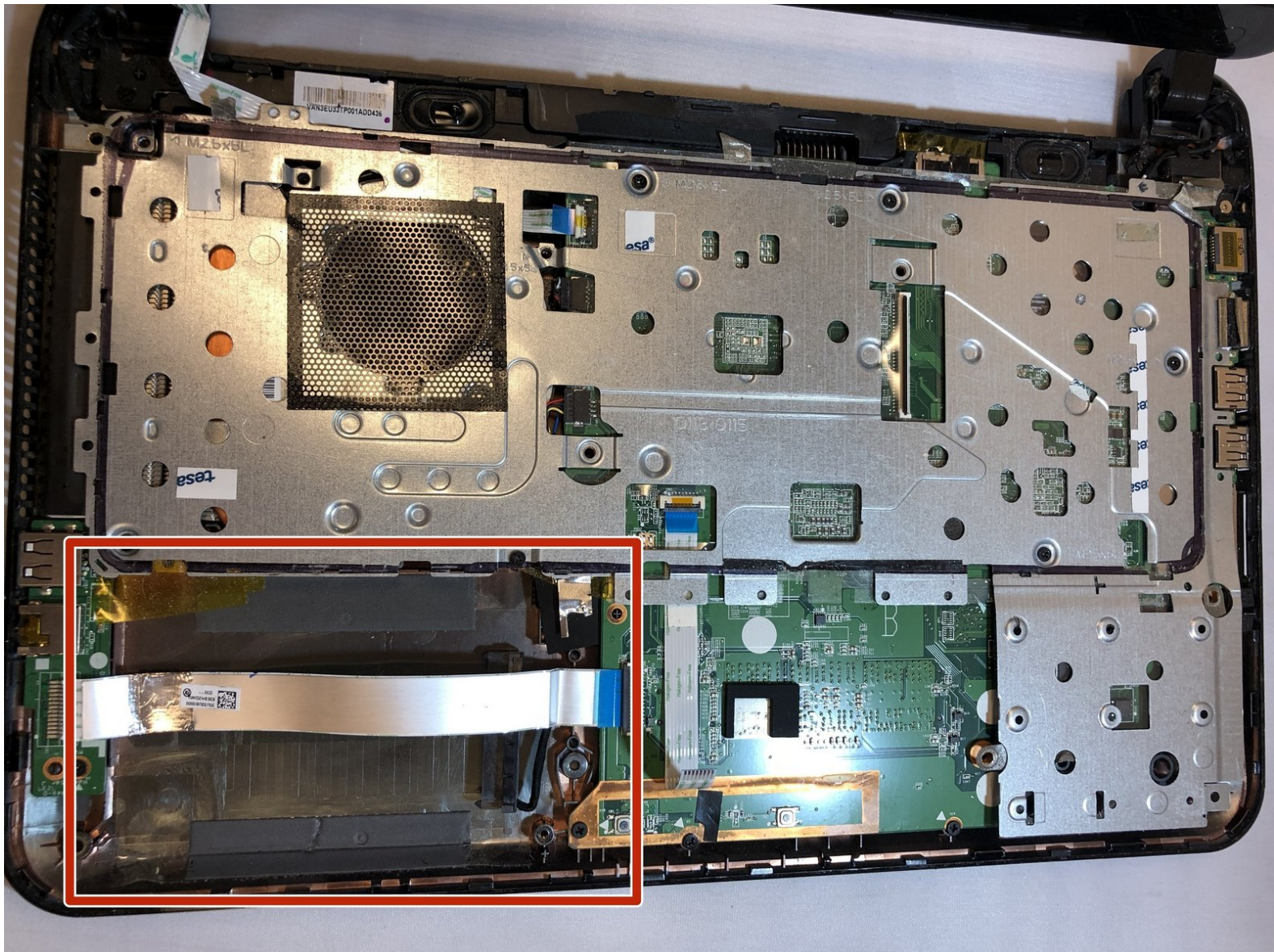




HP Pavilion Sleekbook 14-b013cl Hard Drive Replacement

How to replace the HP Pavilion Sleekbook 14-b013cl Hard Disk Drive (HDD).

Written By: James Barlow-Jones



INTRODUCTION

In this guide, you will learn how to replace your HP pavilion Sleekbook's Hard Disk Drive (HDD).



TOOLS:

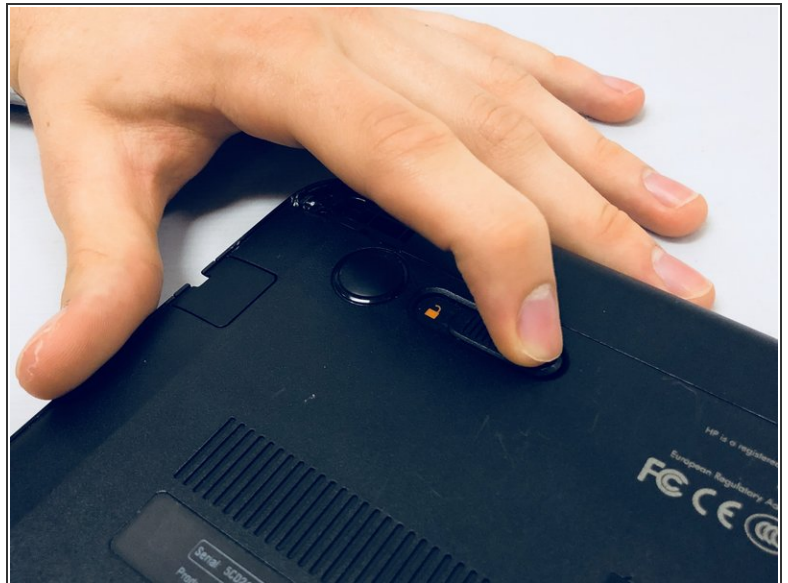
- [64 Bit Driver Kit](#) (1)
- [iFixit Opening Tools](#) (1)



PARTS:

- [500 GB 5400 RPM 2.5" Hard Drive](#) (1)

Step 1 — Battery



- Flip the computer over and move the battery lock switch to the "unlocked" position (marked by an orange lock icon).

Step 2



- Press the switch on the right-hand side of the back of the device towards the center until the gray battery icon is no longer visible. This will eject the battery.

Step 3



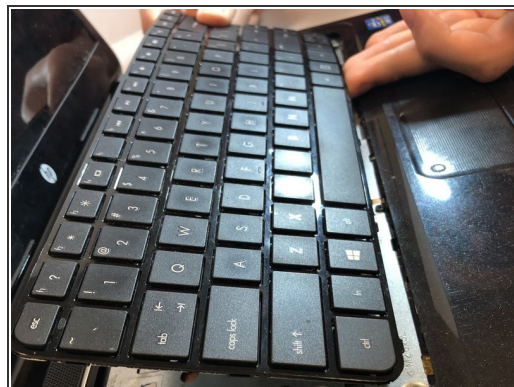
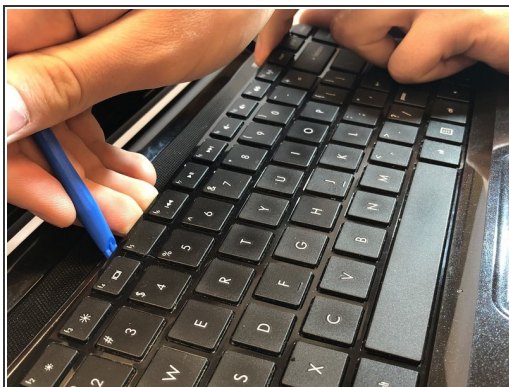
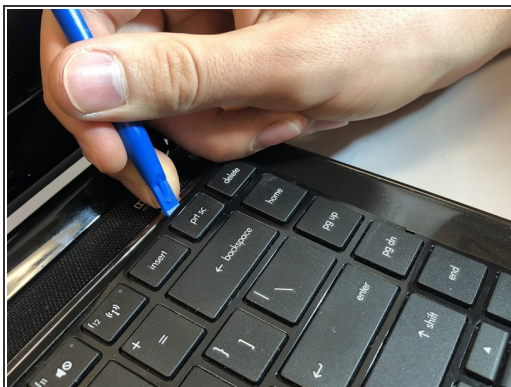
- Carefully pull the battery away from the device.

Step 4 — Hard Drive



- Using a Phillips #0 screwdriver, unscrew all eight of the screws.

Step 5

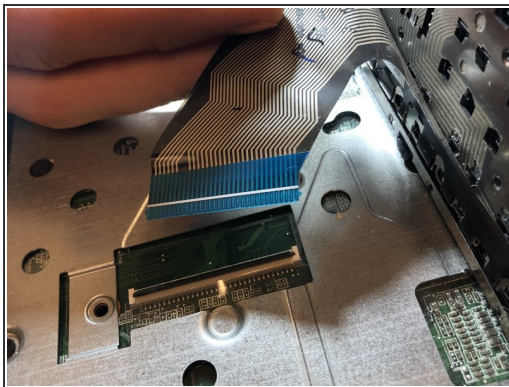


- Using a plastic opening tool, pry up on the upper edge of the keyboard.



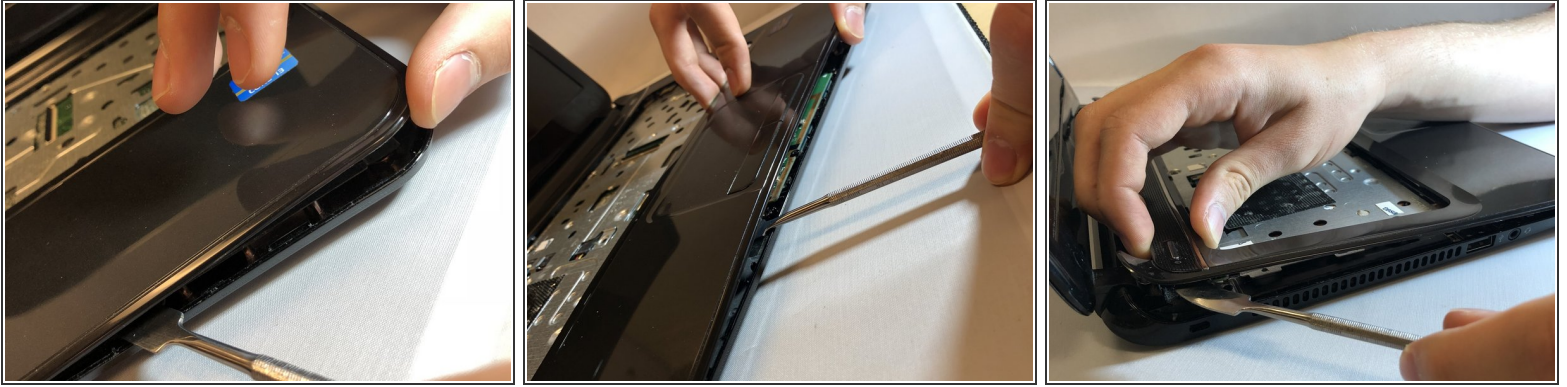
There is a wire connecting the keyboard to the motherboard. Do not pull the keyboard away until you have disconnected it.

Step 6



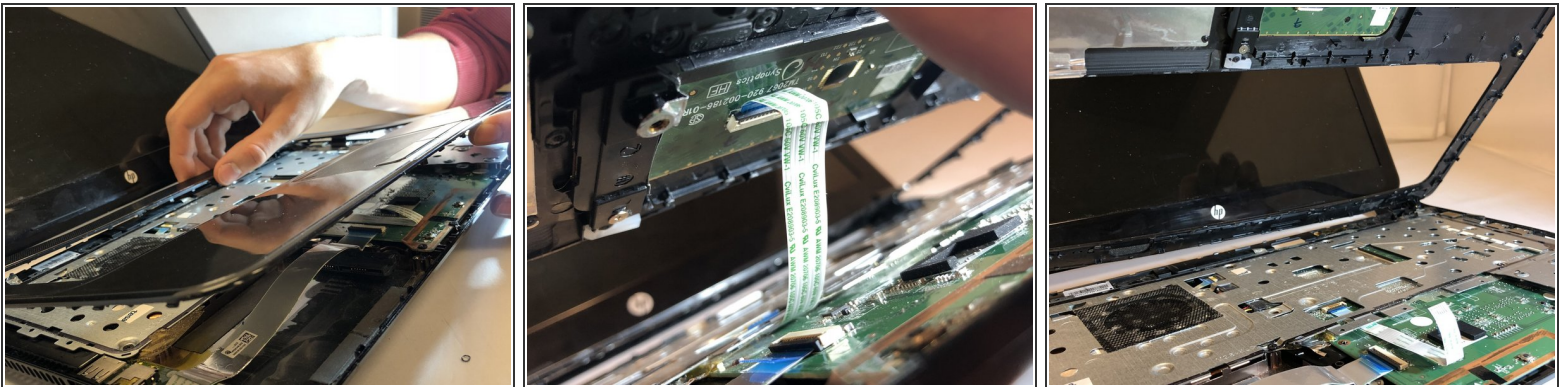
- To disconnect the wire, pry up on the latch holding it in its socket.

Step 7



- Flip the laptop back over.
 - Using a plastic or metal spudger, carefully pry the top and bottom halves of the case apart.
- ⚠ Don't push the metal spudger in too far or you might damage the laptops internal components.
- ⚠ Do not pull the halves apart yet as there are still wires attaching them together.

Step 8



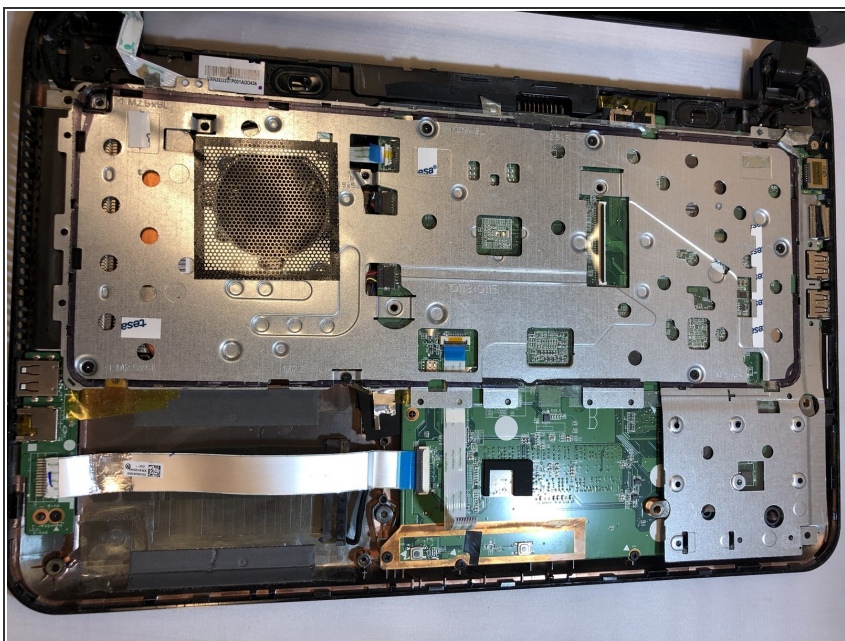
- Disconnect the touch pad wire by flipping the small black lever using a plastic opening tool.

Step 9



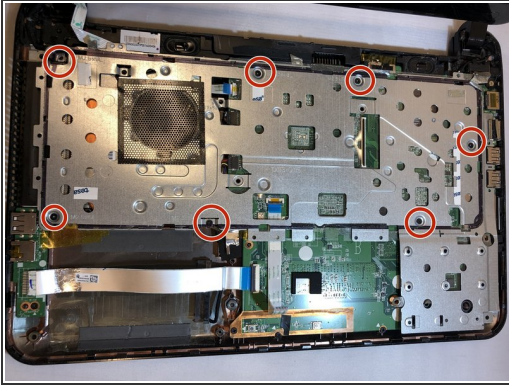
- Unscrew the small circuit board underneath the power button.
- Remove the circuit board by pulling up and away on the plastic tab.

Step 10



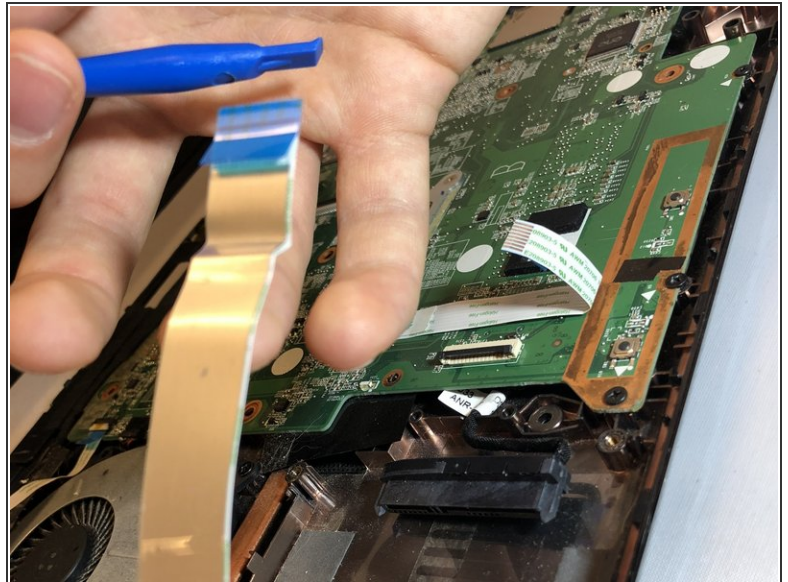
- Pull the top half of the plastic case off of the laptop.

Step 11



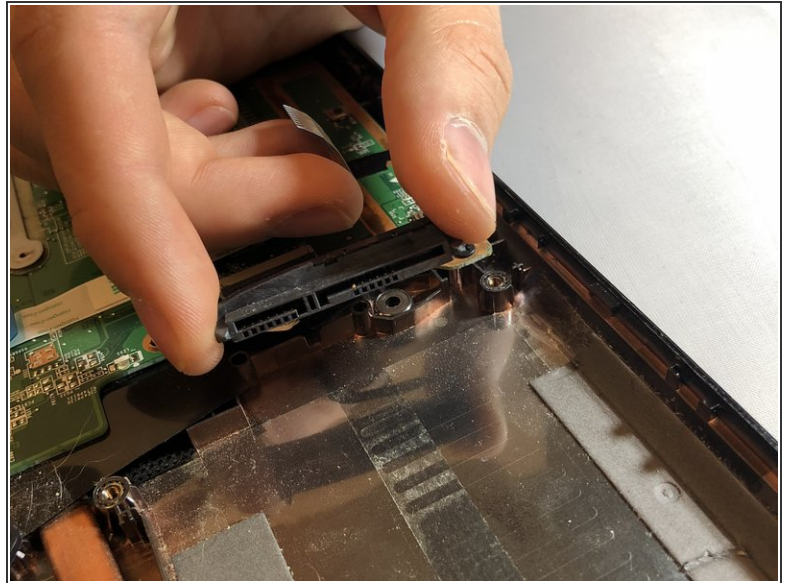
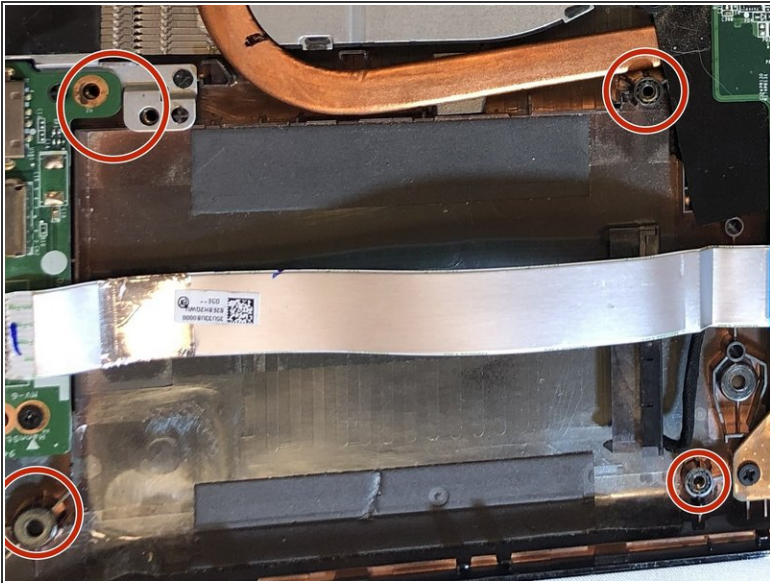
- Remove all seven of the screws using a Phillips #0 screwdriver and pull the plate off the motherboard.
- ⓘ There is double sided tape holding the plate down, as well as the screws. Sufficient force will be required to remove the plate.

Step 12



- Remove the USB wire which runs over the top of the hard drive.
- ⚠ The wire is stuck to the hard drive with double sided tape.
- Remove the wire by carefully pulling towards the USB connector on the left hand side of the laptop.

Step 13



- Remove the four screws securing the hard drive to the motherboard.
- Disconnect the hard drive cable by gently pulling it away from the hard drive.

To reassemble your device, follow these instructions in reverse order.