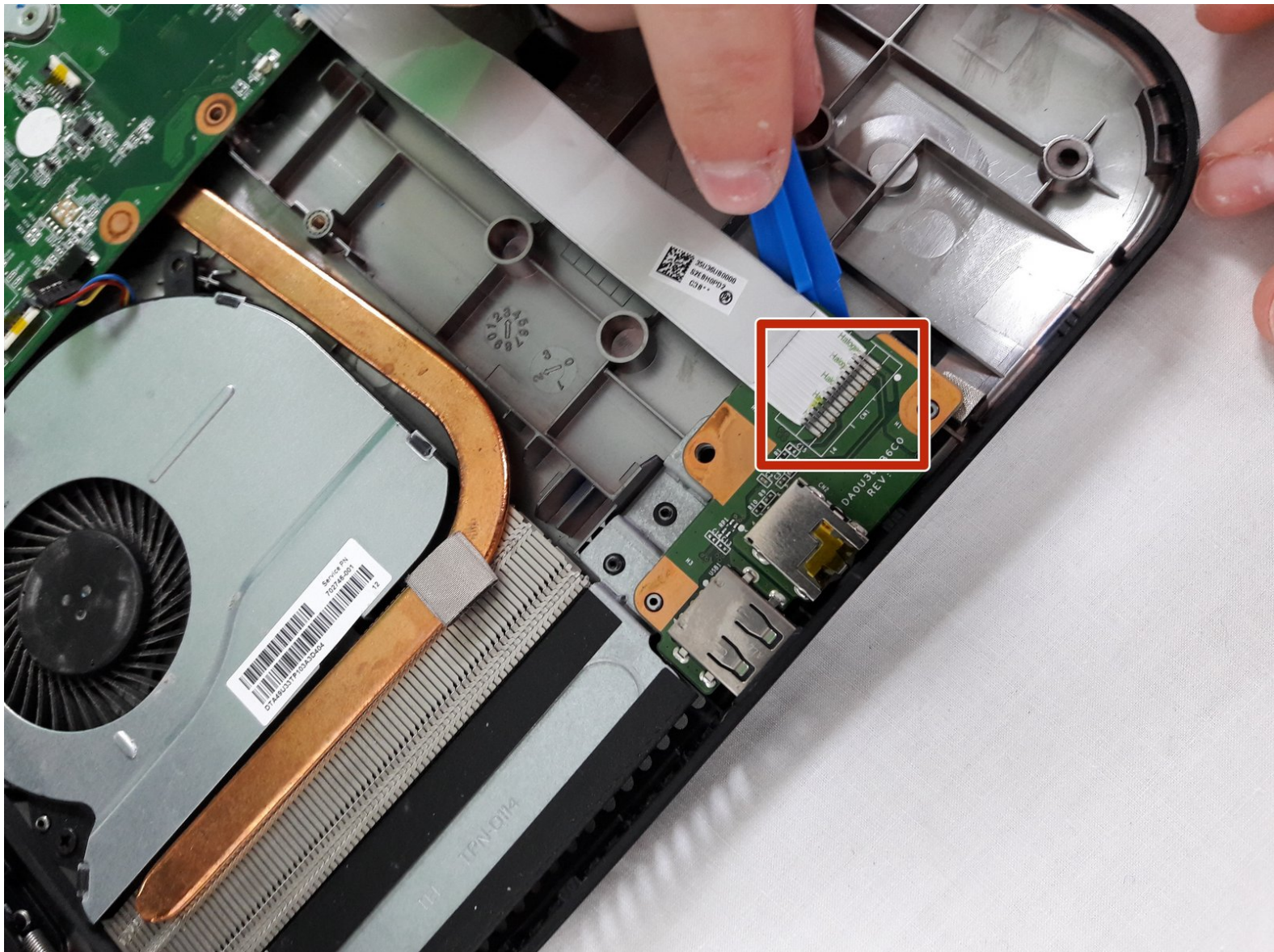




# HP Pavilion Sleekbook 15-b000 Motherboard Replacement

Remove the motherboard for future repairs or replace the motherboard if damaged.

Written By: Sam Barkley



# INTRODUCTION

This guide will walk you through the step by step process to remove the mother board from your laptop. You will need to do this if you are having issues with the laptop booting or to remove the WiFi card or RAM.



## TOOLS:

- [Phillips #1 Screwdriver](#) (1)
  - [iFixit Opening Tools](#) (1)
-

## Step 1 — Battery



- Unplug laptop from adapter and all other devices.

## Step 2



- Flip the laptop over with battery facing you.



## Step 3



- Slide the battery lock on the right side open.
- Slide the Battery release latch on the left side.

## Step 4



- Pull battery out.

## Step 5 — Keyboard



- Remove the two 6.5mm Phillips #1 keyboard screws from bottom of laptop.

## Step 6



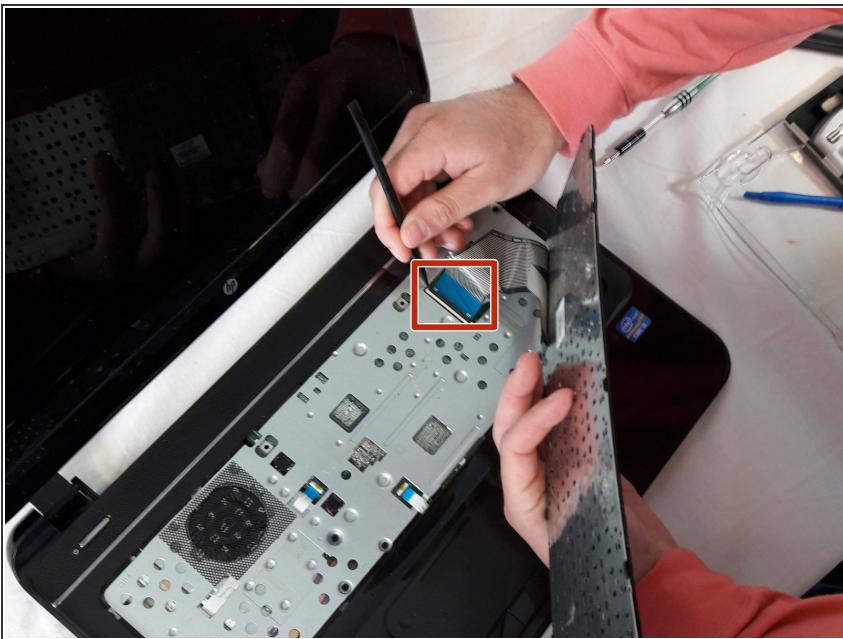
- Push screwdriver through screw hole top pop the keyboard.
- ⓘ Make sure the screen is open.

## Step 7



- Pry up the keyboard.
- ⓘ The keyboard is still attached by it's ribbon.

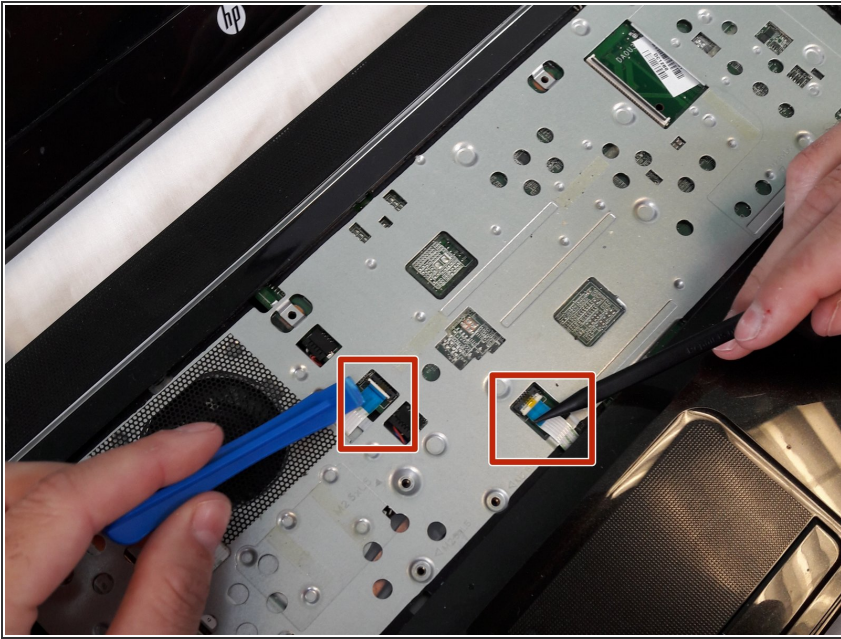
## Step 8



- Remove keyboard wire by popping latch under blue plastic



## Step 9 — Case



- Using the spudger to lift up on the white tabs
- Pull horizontally on the blue ribbon to disconnect the cables

## Step 10



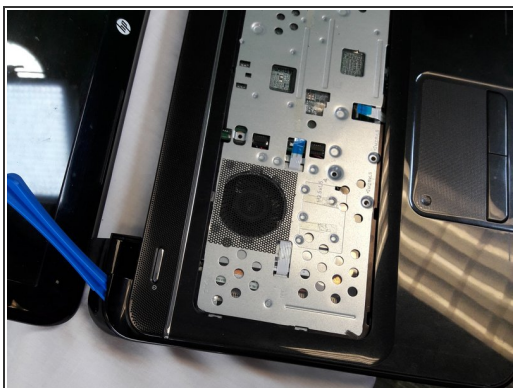
- Remove the five 5.5mm Phillips #1 screws from the case

## Step 11



- Remove eight 6.5mm Phillips #1 screws from the back cover

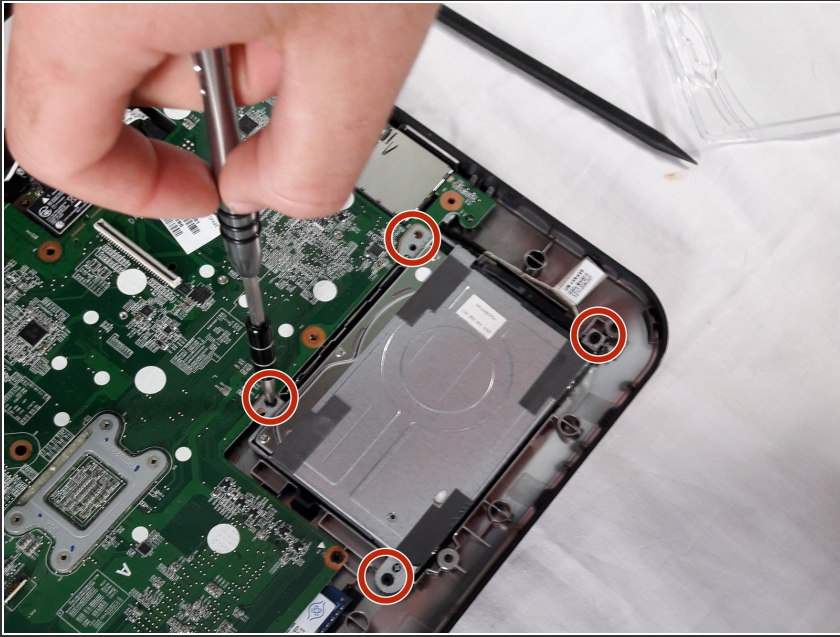
## Step 12



- Starting at a top corner, use the pry tool to split the case.
- Slowly work around the case, pulling up gently to release the clips.



## Step 13 — Hard Drive



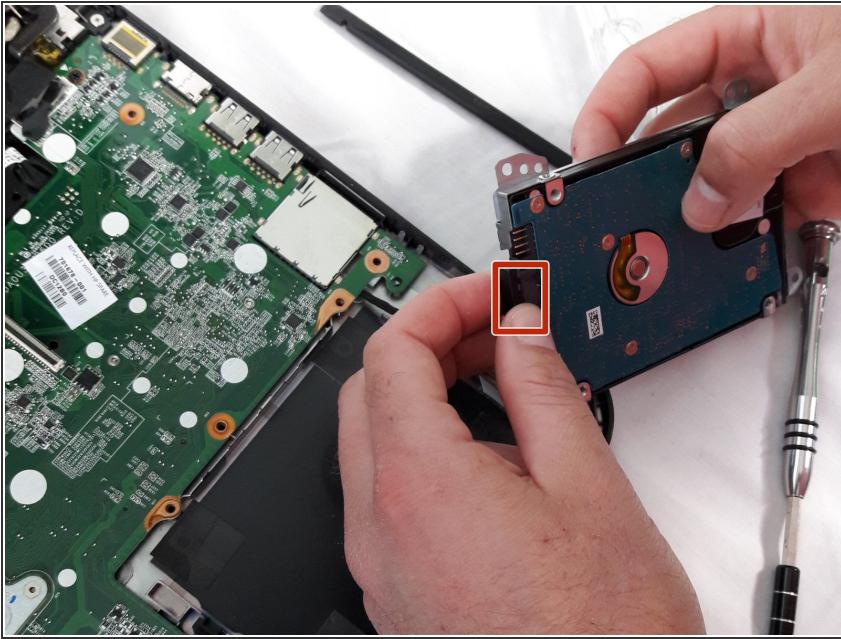
- Remove the 4 x 5.5 mm screws connecting the hard drive to the case.

## Step 14



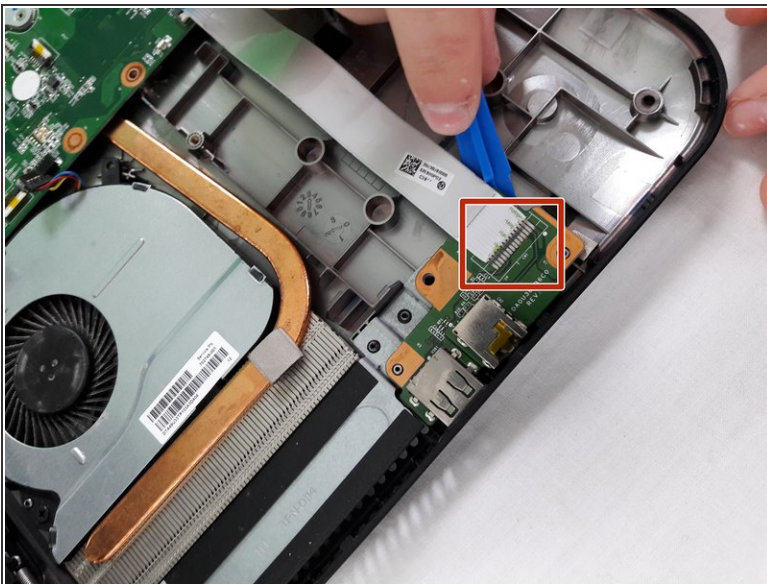
- Remove hard drive from bracket being careful of its cable.

## Step 15



- Disconnect cable from hard drive.

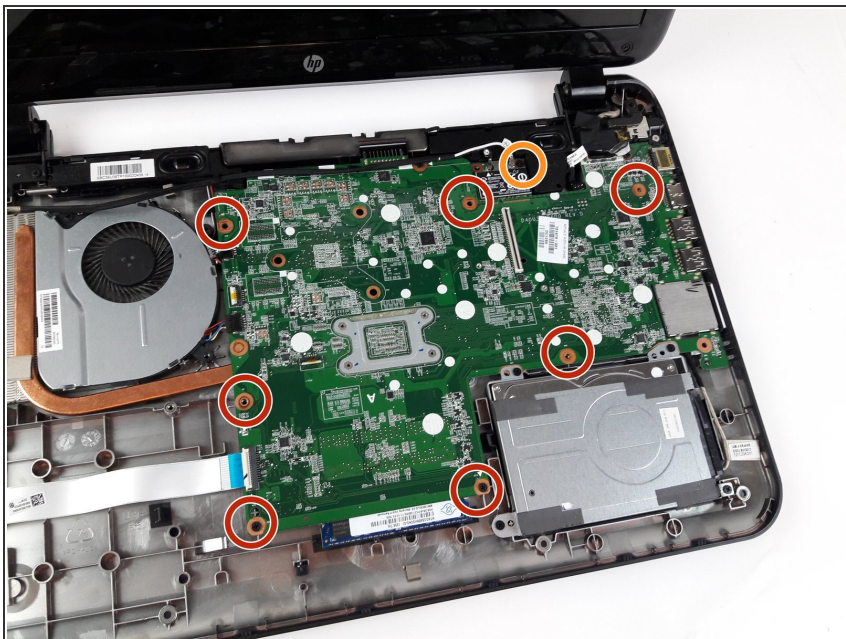
## Step 16 — Motherboard



- Disconnect motherboard cable from left side USB and jacks

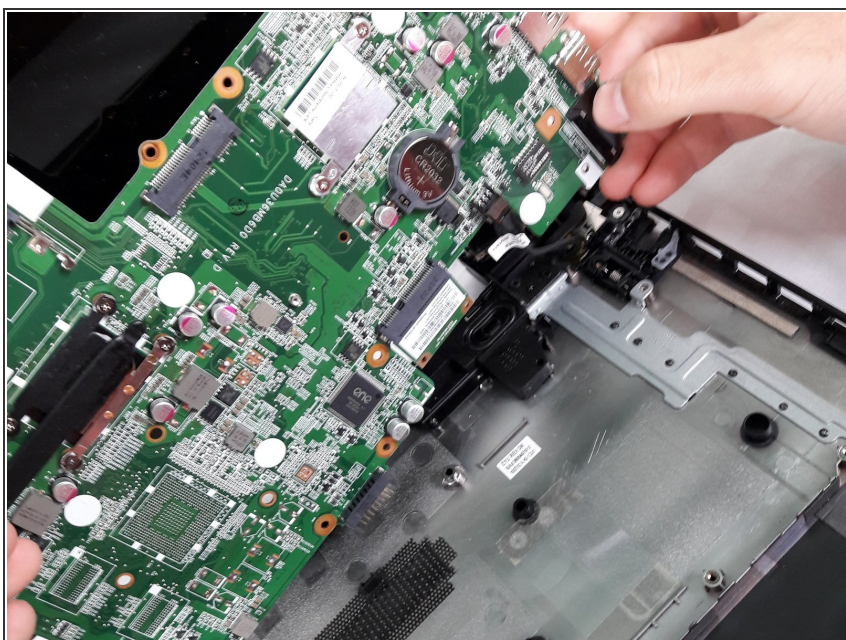


## Step 17



- Remove the six 5.5mm Phillips #1 motherboard screws
- Remove the one 3.5mm Phillips #1 screw from the WiFi chip

## Step 18



- Remove motherboard.

To reassemble your device, follow these instructions in reverse order.