



# HP Pavilion Wave 600-a014 System Fan Replacement

How to replace the system fan on HP Pavilion Wave

Written By: Kyaw Soe



## INTRODUCTION

Is your HP Pavilion Wave fan malfunction or humming too loud? If that's the case, it can be fix by simply replacing the one and only system fan.



### TOOLS:

- [iFixit Opening Tools](#) (1)
- [64 Bit Driver Kit](#) (1)
- [Flathead 3/32" or 2.5 mm Screwdriver](#) (1)
- [Phillips #0 Screwdriver](#) (1)



### PARTS:

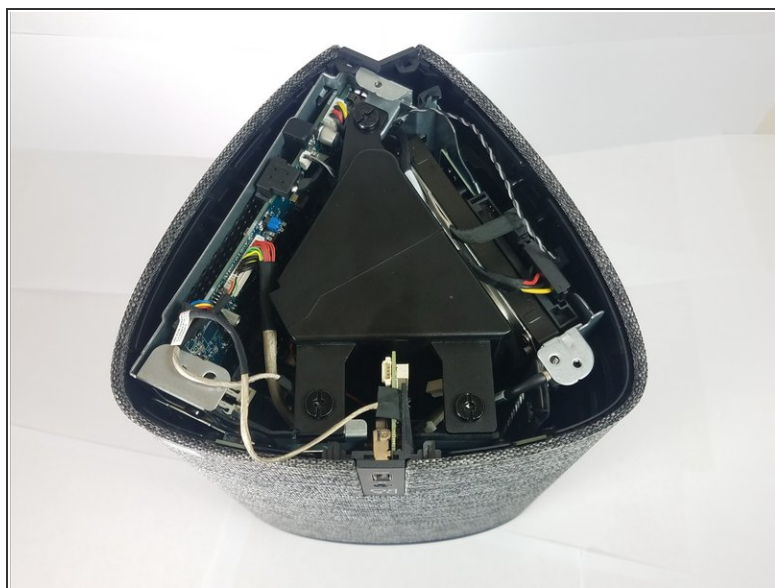
- [System Fan for HP Pavilion Wave](#) (1)

## Step 1 — Hard Drive



- Disconnect the PC from power source and any other devices.

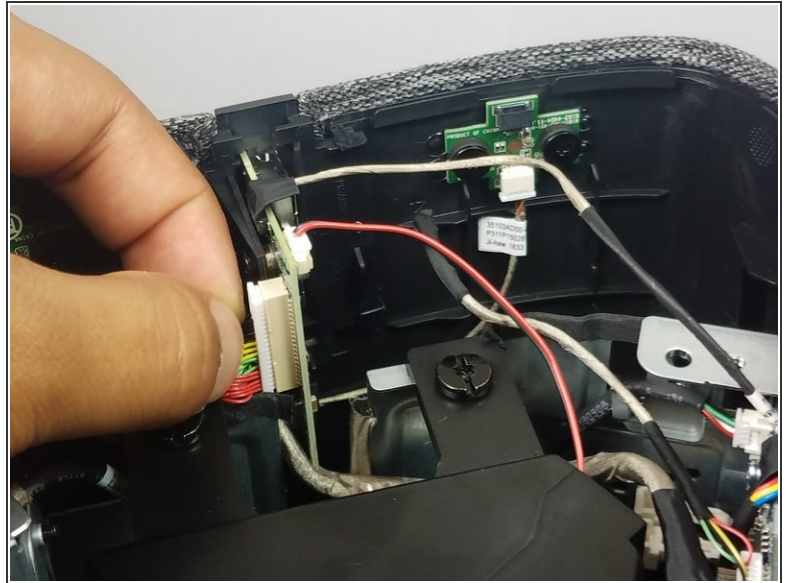
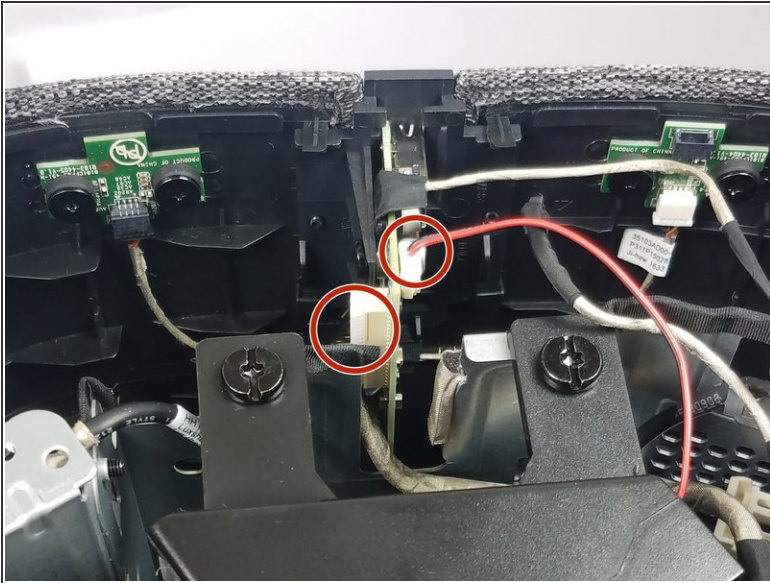
## Step 2



- Turn the computer over and remove the rubber feet.
- Remove the three 8mm Philips screws with a Philips #0 Screwdriver.
- Use a pry tool and lift up on the lid.



### Step 3



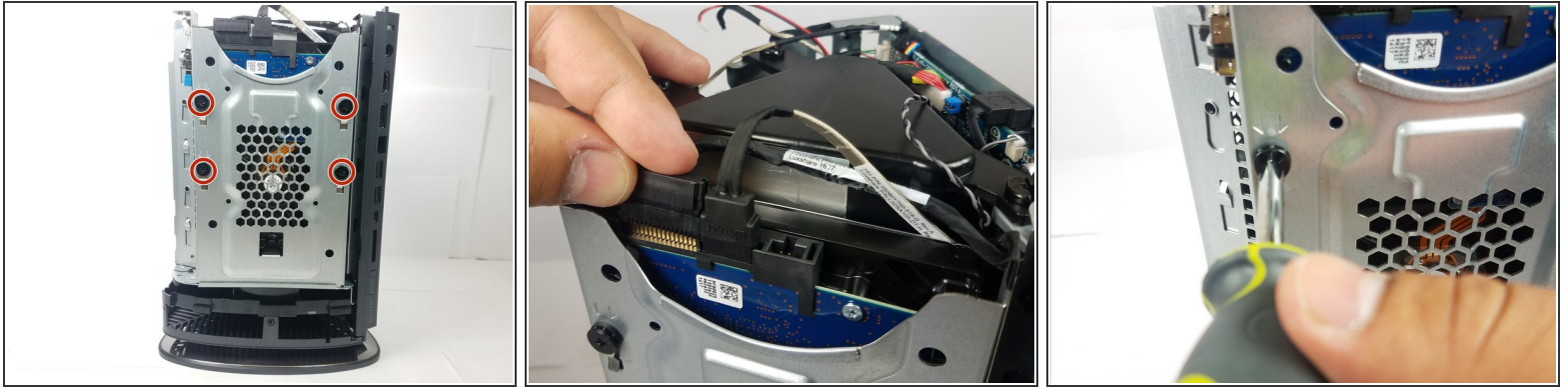
- Remove the two cables circled in red for the front IO panel.

### Step 4



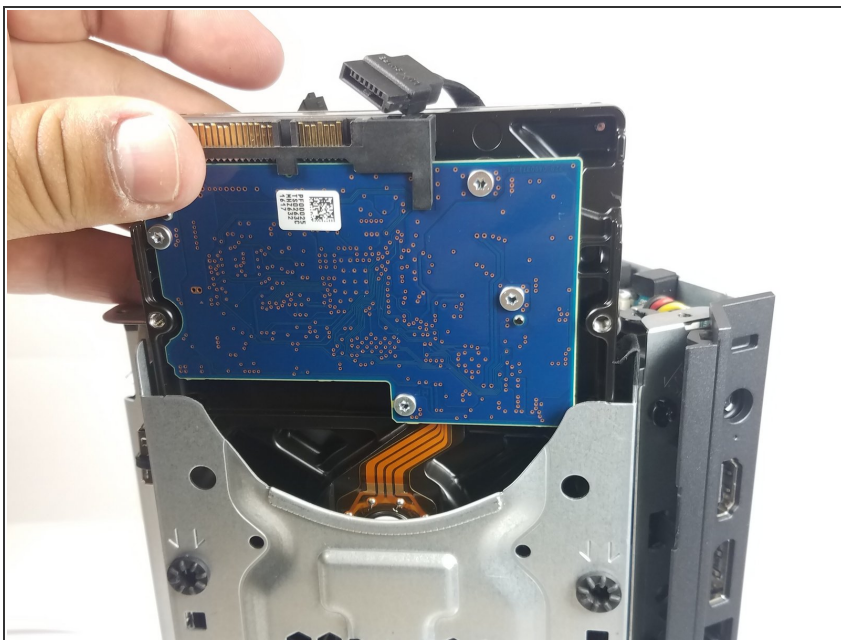
- From back IO panel pry open the casing as indicated.

## Step 5



- To remove the hard drive, remove the four 8mm Philips screws using a Philips #0 Screwdriver.
- Remove Power and SATA cables from on top of the drive.

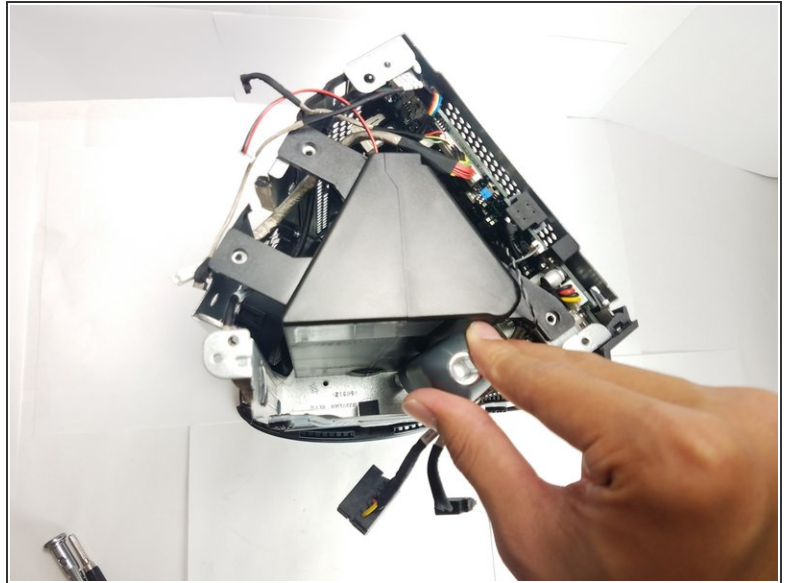
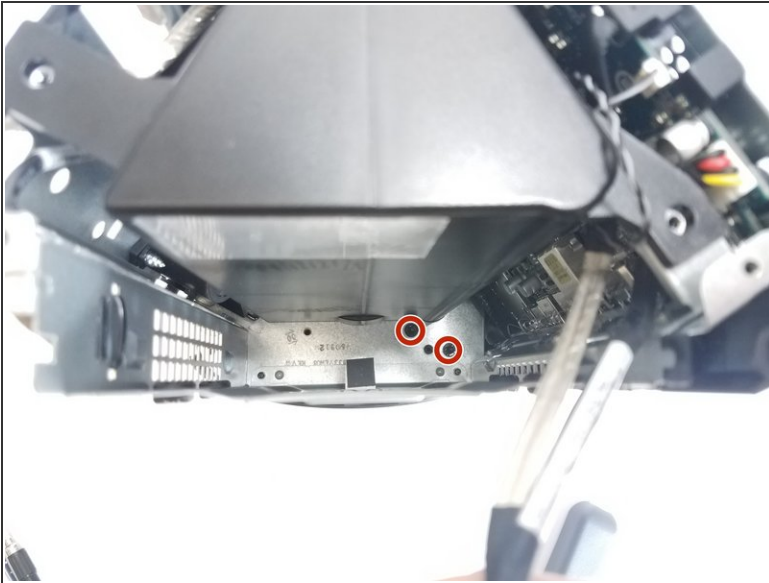
## Step 6



- After screws have been removed grab the Hard Drive and pull it out of the dock.



## Step 7 — System Fan



- After removing your hard drive, remove the two 1.2mm Phillips #1 screws from the bottom of your case .

## Step 8



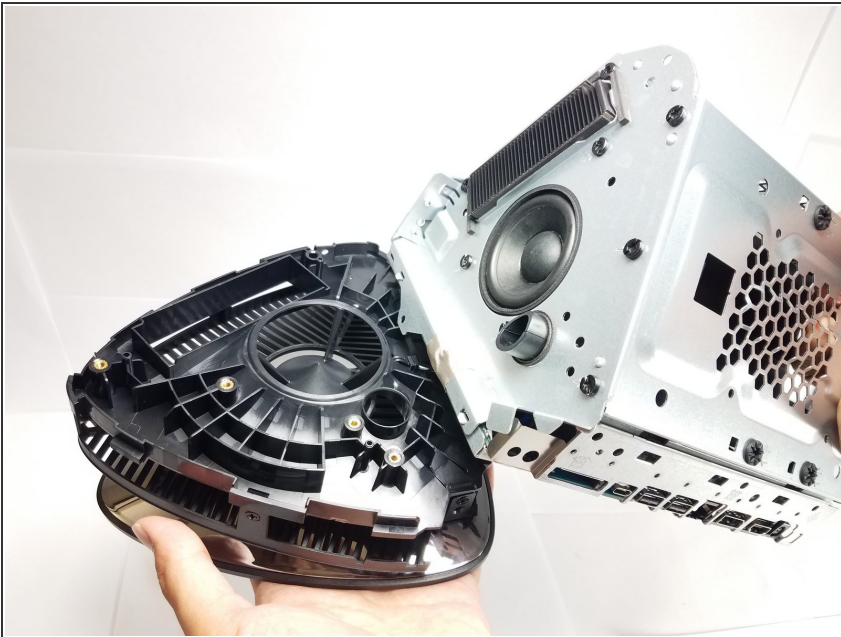
- Remove the 8 mm Phillips #0 screw that is connected the top bezel and the top cover using the driver kit.

## Step 9



- Using a flathead screwdriver, remove the 8 mm Phillips #1 screw that connects the body casing and the top bezel(the one at the bottom of memory card slot).

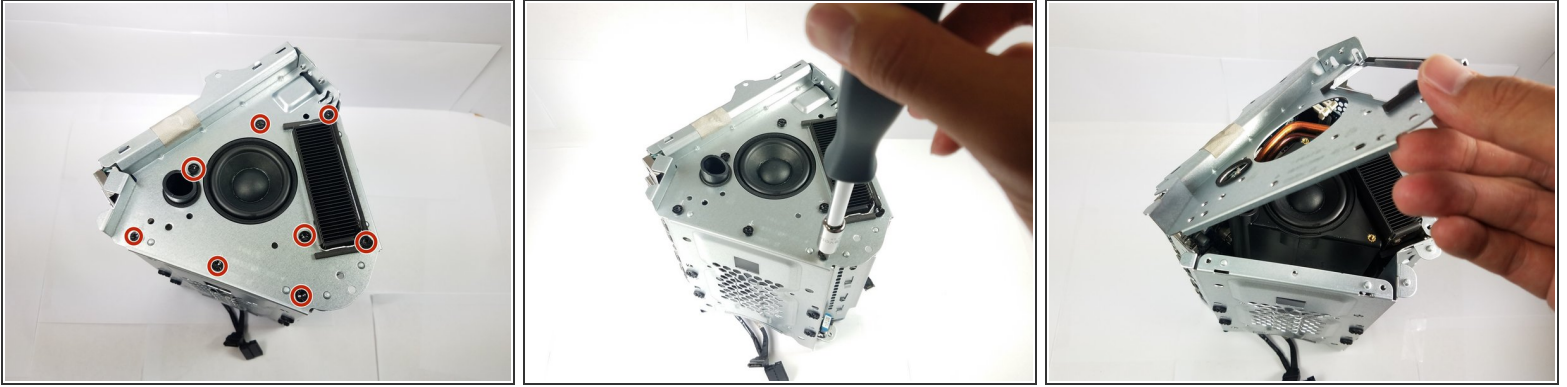
## Step 10



- Remove the top bezel.
- ⓘ You will have to take off a pair of wire connecting the bezel with the body to be able to completely detach it.



## Step 11



- Turn the device to the top side where you can see the top cover and the speaker.
- Using a flathead or Phillips #1 screwdriver, unscrew all the eight 8.0 mm screws that connect the top cover to the other components of the casing.
- Gently remove the top cover.

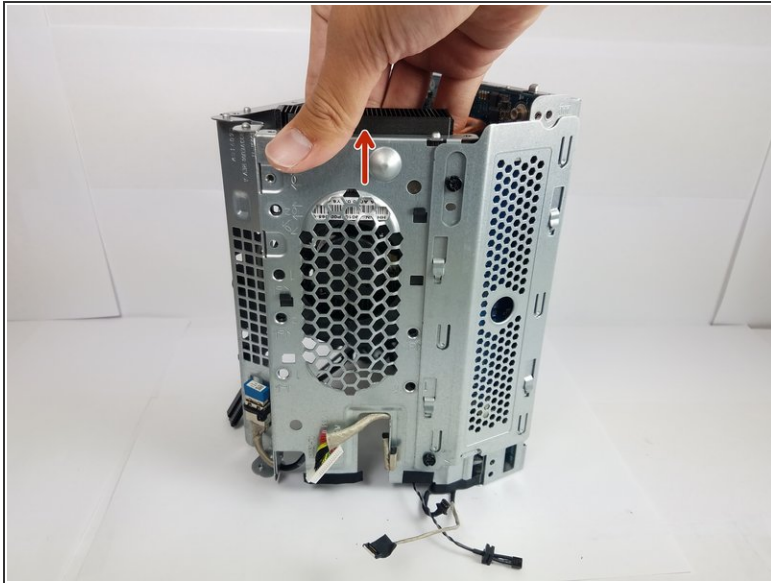
## Step 12



- After removing the top cover, locate the system fan on the left side of memory compartment.
- Remove three 1.2 cm Phillips #1 screws that connect the fan with the main body.



## Step 13



- Simply slide up the fan after removing the screws.

To reassemble your device, follow these instructions in reverse order.