



Written By: Shantel



---

# INTRODUCTION

How to remove the Wi-Fi Card



## TOOLS:

- [Phillips #1 Screwdriver](#) (1)
-

## Step 1 — Battery



- Begin by turning the laptop over so that you can see the bottom of the computer.

## Step 2



- Slide the battery release switch to the right while simultaneously lifting up the battery.

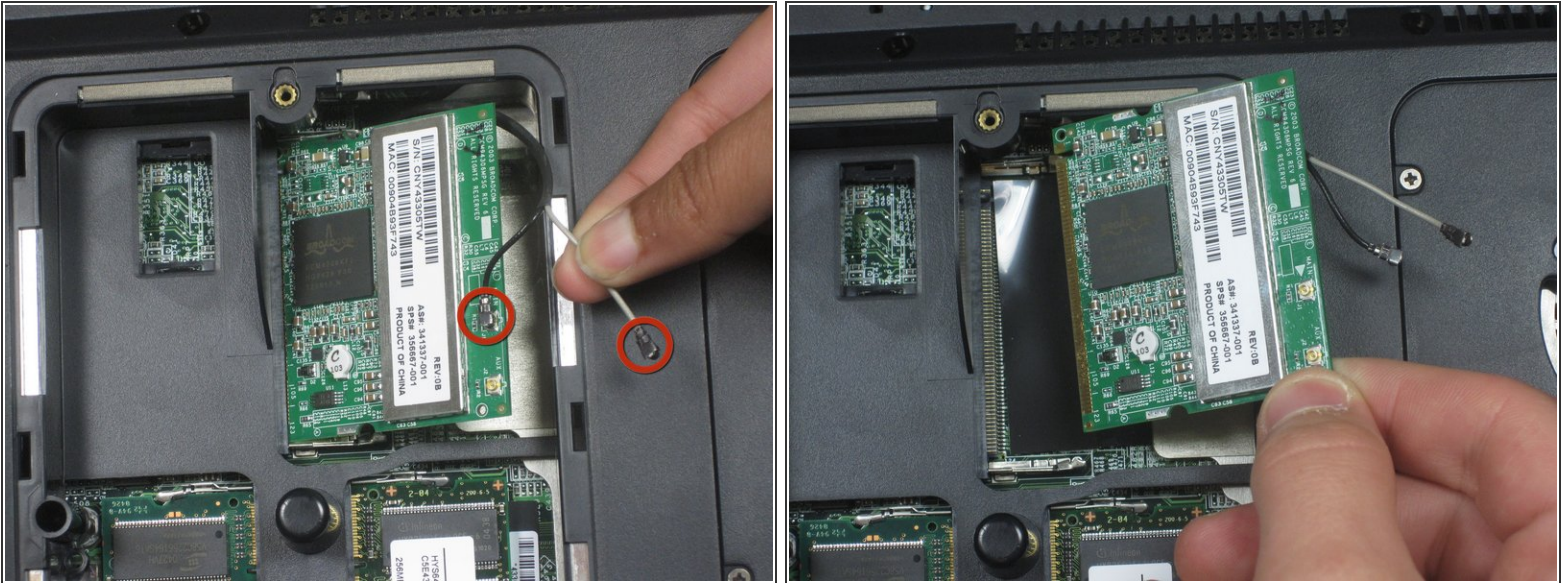


## Step 3 — Wi-Fi Card



- Unscrew the 2 screws from the plate that cover the Wi-Fi card.
- Remove the cover.

## Step 4



- Disconnect these 2 antenna wires (which eventually connect to the monitor) from the Wi-Fi card.
  - ❗ For reassembly, note where the black and white cables connect to the card.
- Release the Wi-Fi card from the laptop by pressing the metal hinges on either end of it.
- Gently remove the card from laptop.

To reassemble your device, follow these instructions in reverse order.