



# HP Pavilion dv1000 CD Drive Replacement

Replacing the CD drive in the laptop.

Written By: Shaun Boley



---

## INTRODUCTION

Switching out the old CD drive to replace with a new one is relatively easy once the back cover of the laptop has been removed.

---

### TOOLS:

- [Phillips #00 Screwdriver](#) (1)
  - [iFixit Opening Tools](#) (1)
-

## Step 1 — Battery



- Shut down the computer.
- Disconnect all external devices and cables from the computer.

## Step 2



- Flip the laptop over.



### Step 3



- Locate the gray sliding tab next to the black bar where the battery is located.
- Slide the gray sliding tab to the left until you hear a distinct click.
- The inside edge of the battery should pop up.

### Step 4



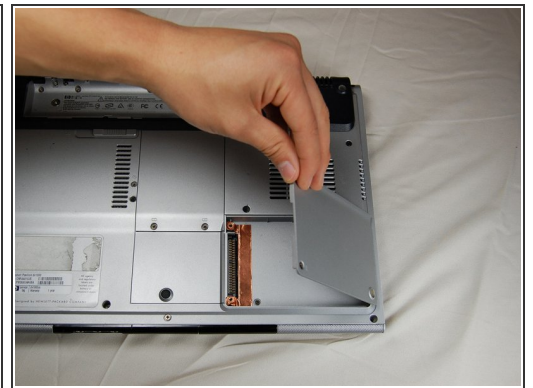
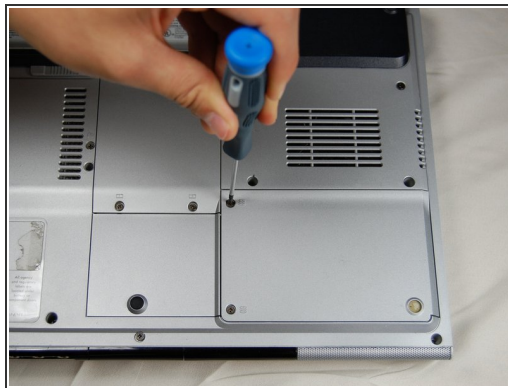
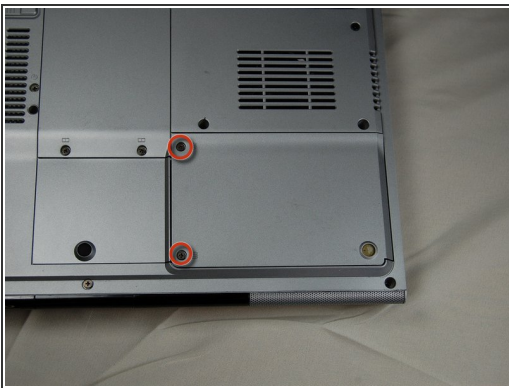
- Grasp the inside edge of the battery.
- Lift the inside edge of the battery up to detach the battery from the laptop.

## Step 5 — Hard Drive



- With the battery removed, locate the hard drive access panel.

## Step 6



- Identify the two screws that attach the hard drive access panel.
- Remove the identified screws with your #00 Philips screwdriver.
- Lift the left edge of the access panel up and to the right to detach the hard drive access panel from the laptop.

## Step 7



- ❗ This particular laptop does not contain a hard drive-- yours will.
- Identify the plastic tab located on the left side of the hard drive.
- Grasp the tab, gently lift up, and slide the tab to the left to remove the hard drive from the laptop.
- ❗ If you wish to replace your hard drive with another, the hard drive has a metal bracket screwed onto the sides of the casing. Unscrew the bracket from the old hard drive and screw it onto the new hard drive before inserting into the laptop.

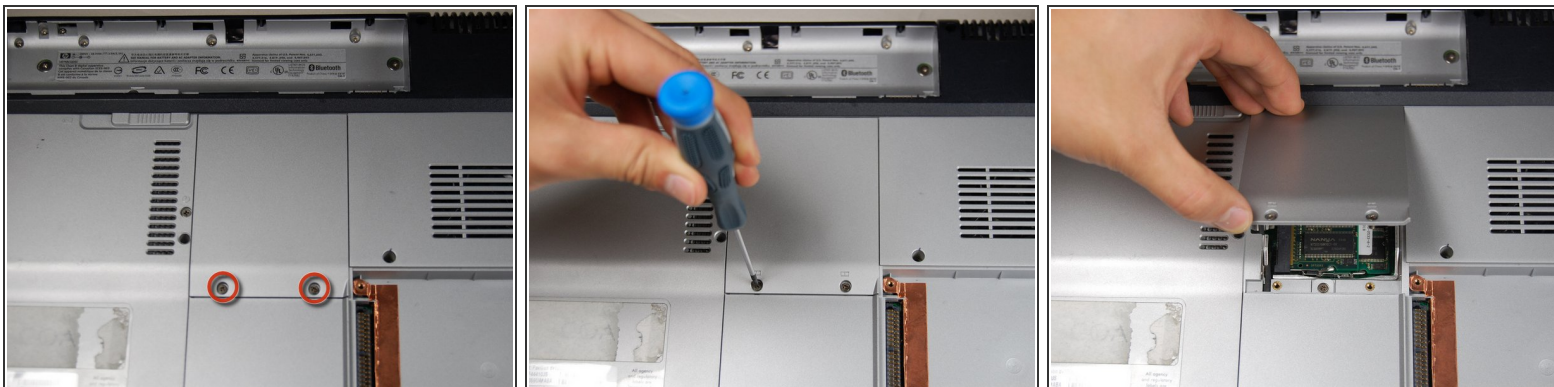
## Step 8 — RAM



- Locate RAM access door on the bottom side of the laptop.

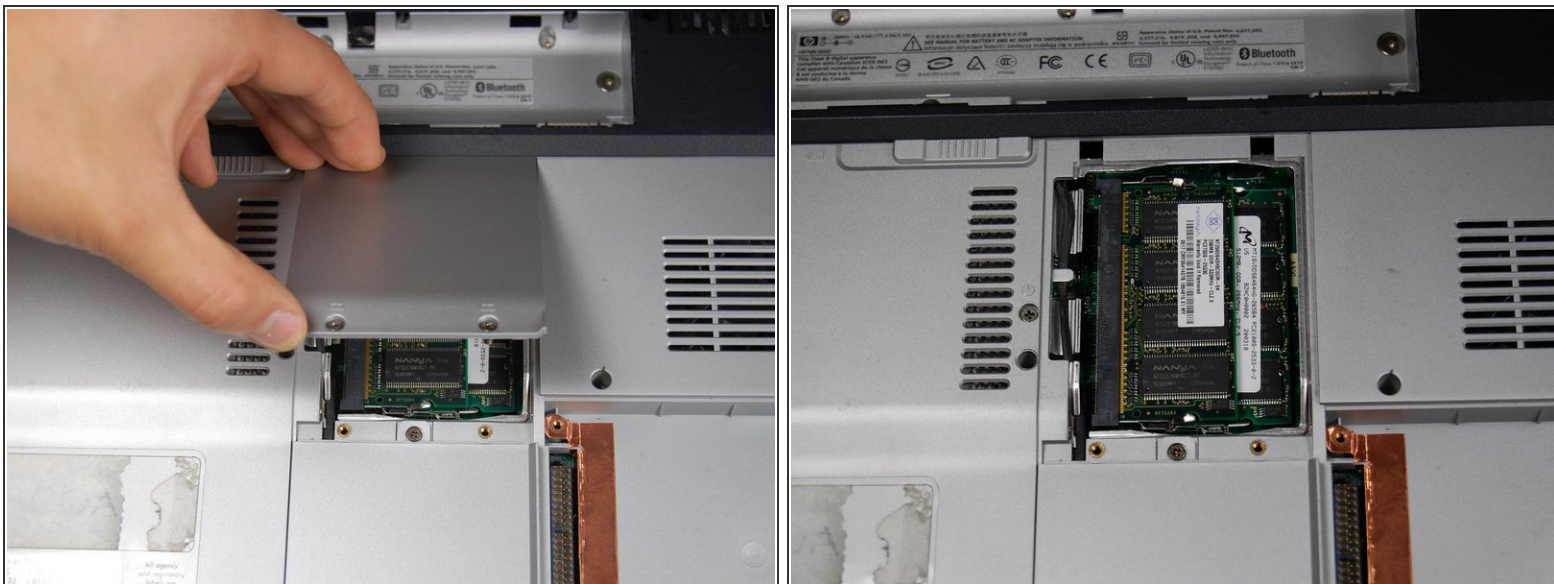


## Step 9



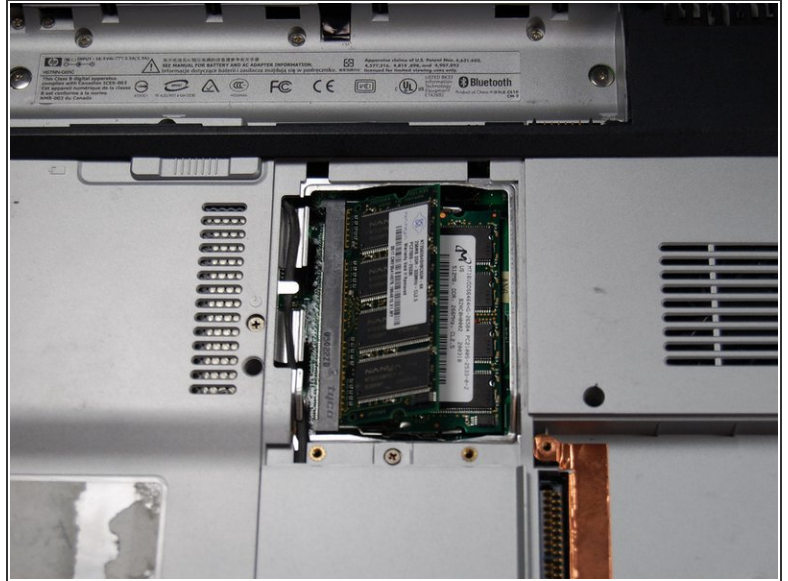
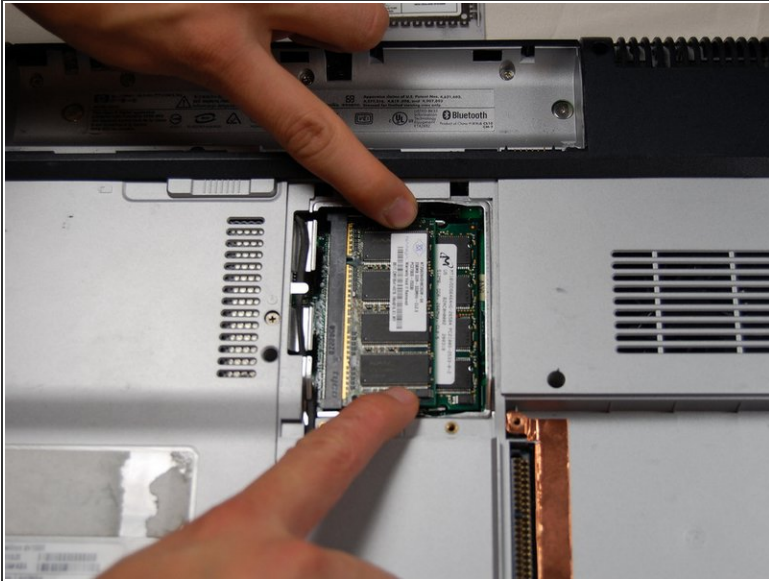
- Locate the two screws holding down the RAM access cover
- Unscrew the two screws with a size 00 Philips screwdriver.
- ⓘ Note: The screws do not detach from the cover.

## Step 10



- Lift up on the screw side of the RAM access cover to remove it.

## Step 11



- Gently pull apart the metal tabs located on both sides of the stick of RAM.
- The RAM stick should tilt upwards.

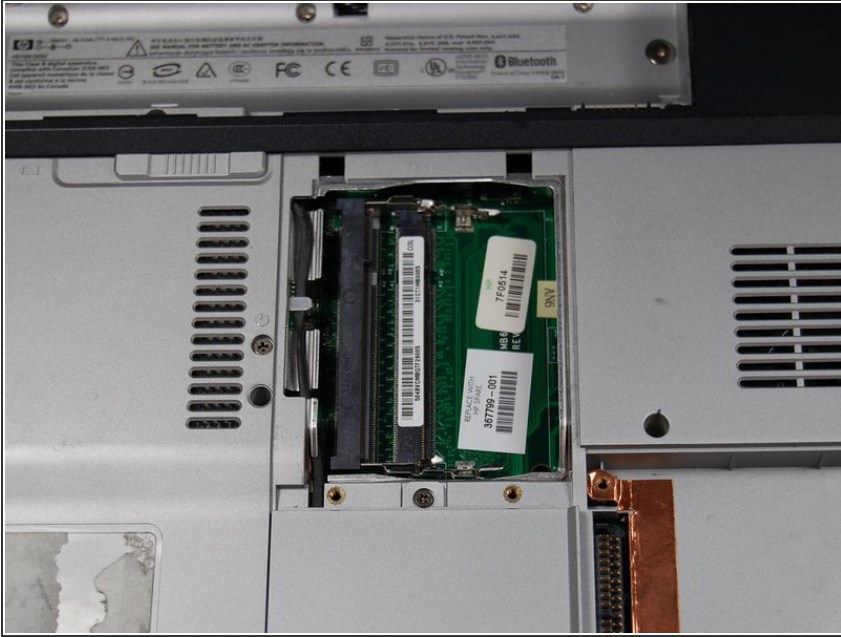
## Step 12



- Gently lift the the RAM up and out of its seat.

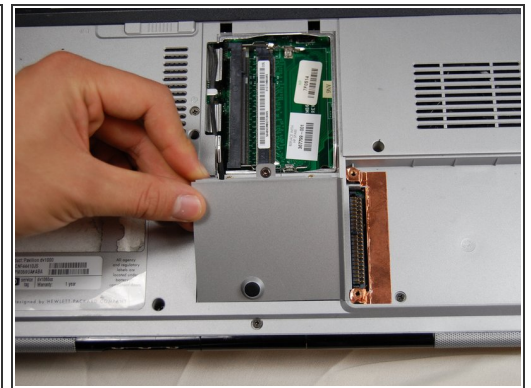
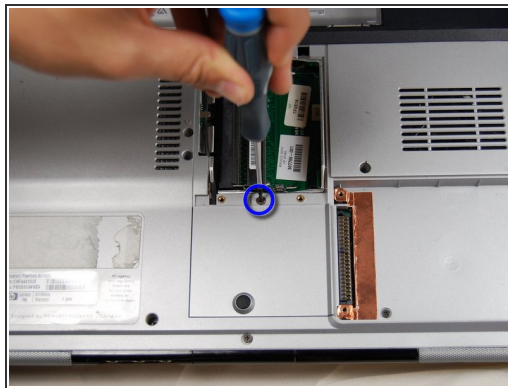
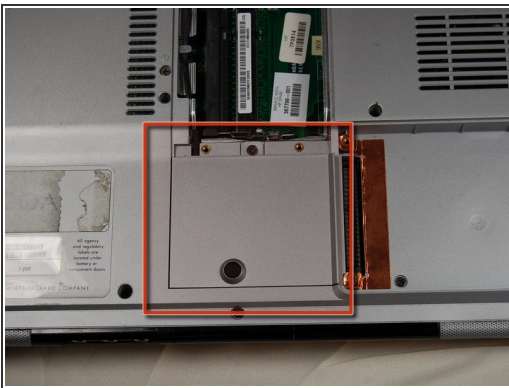


## Step 13



- Repeat the previous two steps for the remaining stick of RAM.

## Step 14 — Bluetooth Card



- Locate the small panel below the panel you just removed.
- Loosen the one screw in the middle with a #00 Phillips screwdriver. Again, the screw will not fall out of the panel when loosened.
- Lift the panel up and out of its slot to remove.

## Step 15



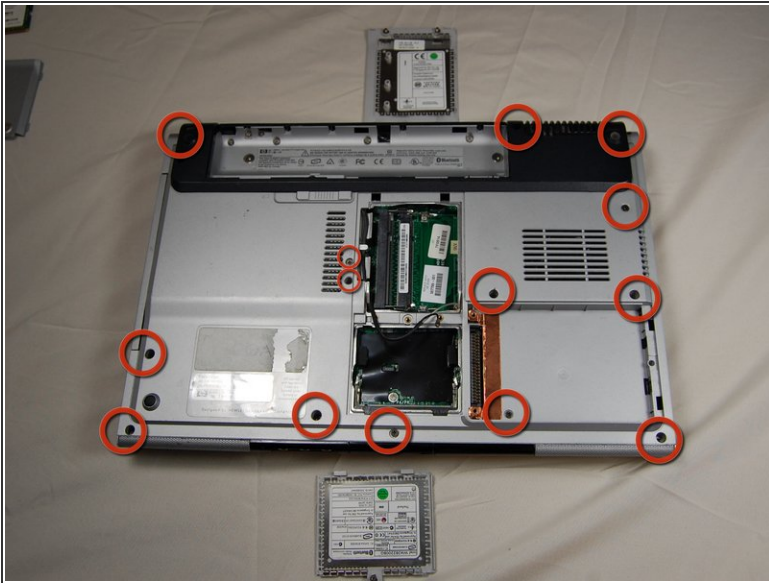
- Identify the two connections at the top of the bluetooth card.
- Using your fingers, gently pull up on the white clip until it releases.
- Remove the black clip in the same manner as the white clip

## Step 16



- Locate the two clips on either side of the Bluetooth card.
- Using your fingers, press the clips outwards, away from the card until the card pops up.
- Grab the card gently from the top and pull the card up and out of the slot.

## Step 17 — Back Cover



- Remove and set aside all of the highlighted screws in the first picture with a #00 Phillips screwdriver.
  - Remove and separately set aside all of the highlighted screws in the second picture with a #00 Phillips screwdriver.
- ⚠ Caution: There are two more screws to remove, so do not try and remove the back cover yet.



## Step 18

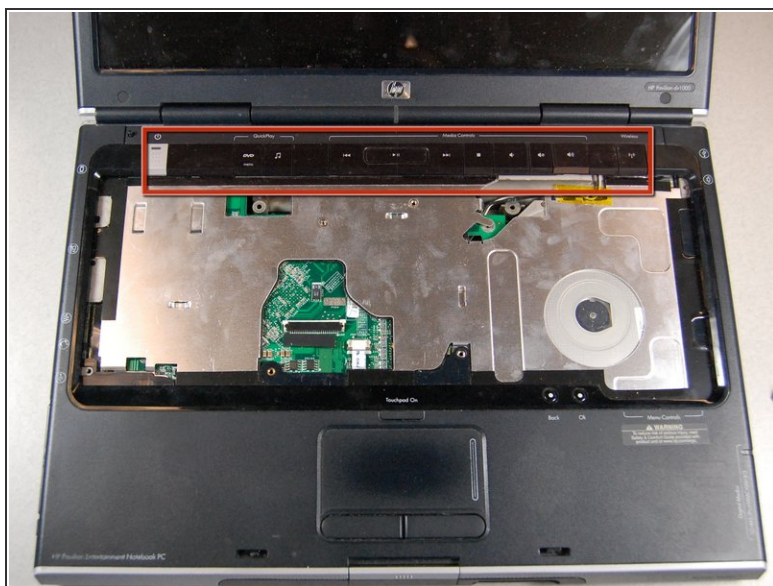


- Turn the laptop right side up, and open it to reveal the keyboard.

⚠ The keyboard should lift up and out easily, but be careful because it is attached to the computer by a ribbon cable.

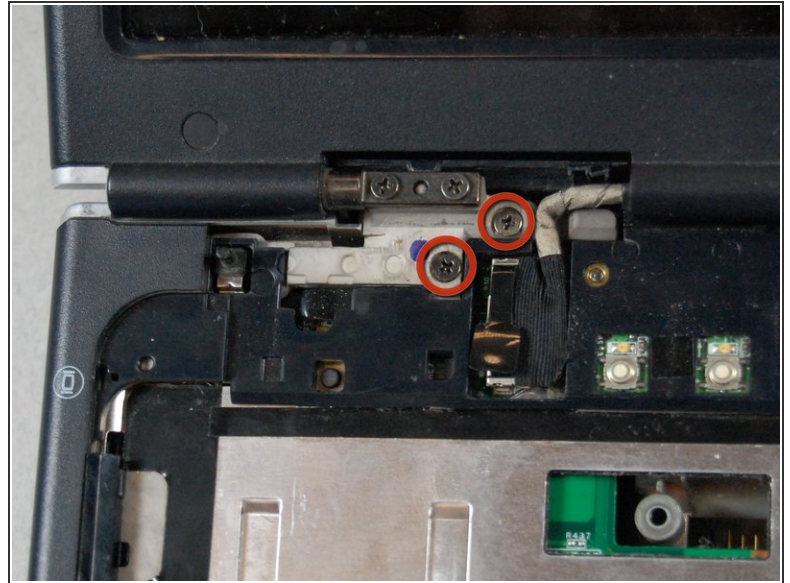
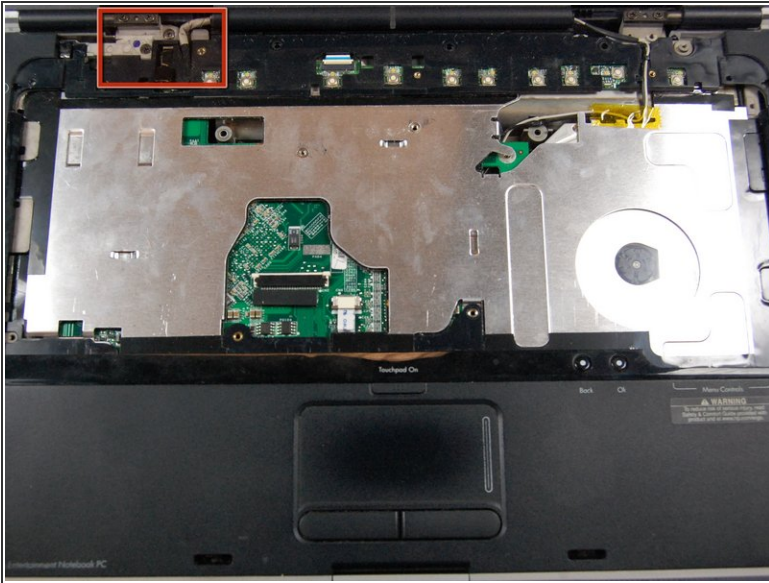
- Press the two white clips forward and lift the tape out of the clip.

## Step 19



- Locate the MediaKeys. They are the black strip right above where the keyboard was.
  - Using the spudger, gently pry up the MediaKeys.
- ⚠ If you feel any resistance, stop and check you have removed all of the screws from the battery compartment.

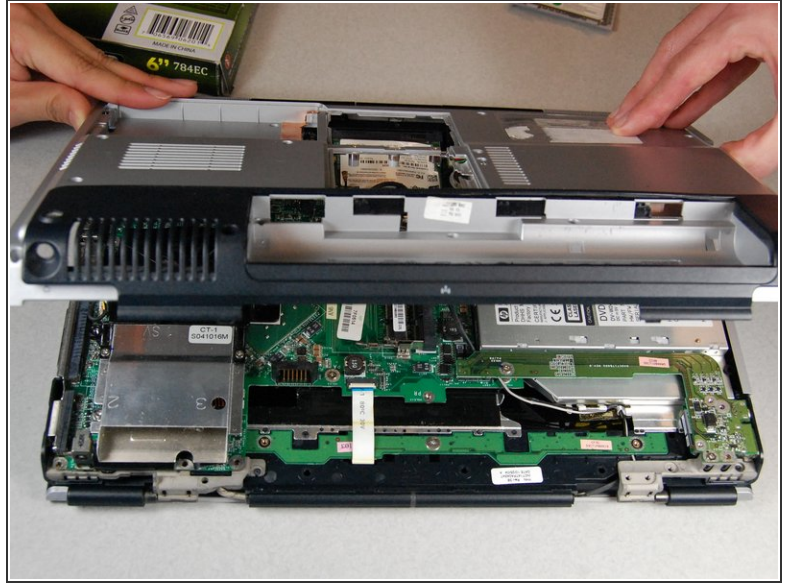
## Step 20



- Remove the two screws next to the left hinge of the monitor with a #00 Phillips screwdriver.
- Keep these screws separate from the other screws you have removed.



## Step 21



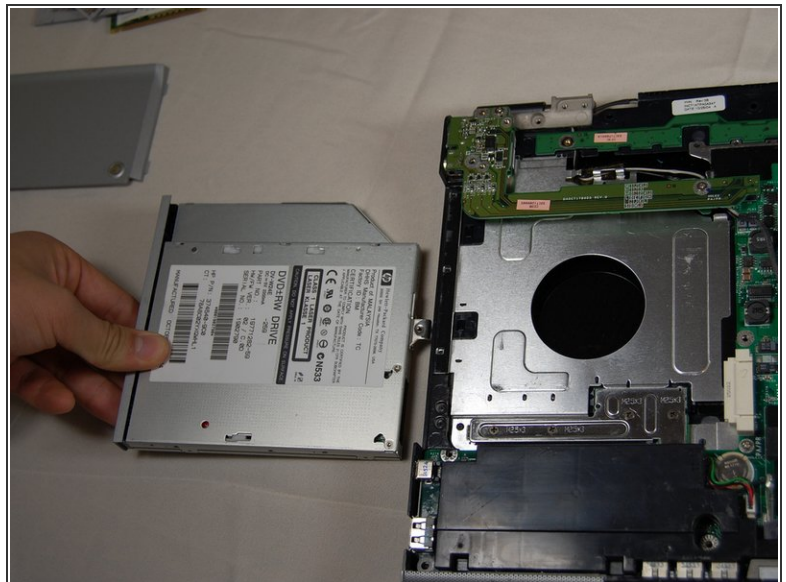
- Using the spudger, loosen the casing behind the battery and the two sides.
  - The case should lift easily upwards and outwards towards you if you are facing the battery compartment.
- ⚠ Make sure the cord that was attached to the Bluetooth cable is not still threaded through the case when trying to remove it.
- ⚠ If you feel any resistance, stop. Do not force anything. Go back through the steps and make sure you loosened everything.

## Step 22 — CD Drive



- With the back cover removed, locate the CD drive.

## Step 23



- With a firm grip on the CD drive's outer casing, slide it away from the laptop.

To reassemble your device, follow these instructions in reverse order.