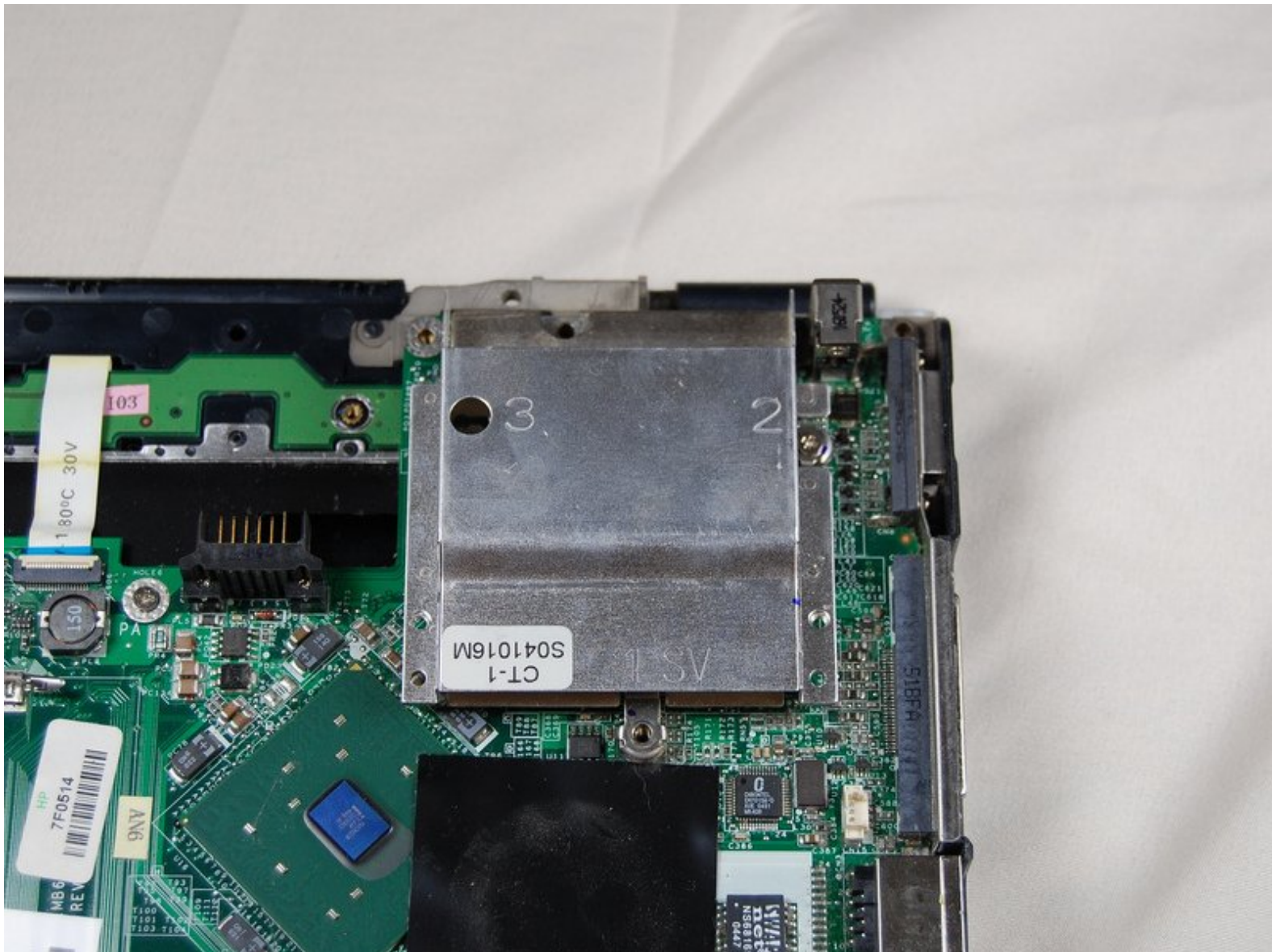




# HP Pavilion dv1000 Heat Sink Replacement

This guide will show you how to remove the heat sink.

Written By: John Hur



---

## INTRODUCTION

This guide will show you how to remove the heat sink.



### TOOLS:

- [Phillips #00 Screwdriver](#) (1)
  - [Spudger](#) (1)
  - [Tweezers](#) (1)
-

## Step 1 — Battery



- Shut down the computer.
- Disconnect all external devices and cables from the computer.

## Step 2



- Flip the laptop over.

### Step 3



- Locate the gray sliding tab next to the black bar where the battery is located.
- Slide the gray sliding tab to the left until you hear a distinct click.
- The inside edge of the battery should pop up.

### Step 4



- Grasp the inside edge of the battery.
- Lift the inside edge of the battery up to detach the battery from the laptop.

## Step 5 — Hard Drive



- With the battery removed, locate the hard drive access panel.

## Step 6



- Identify the two screws that attach the hard drive access panel.
- Remove the identified screws with your #00 Philips screwdriver.
- Lift the left edge of the access panel up and to the right to detach the hard drive access panel from the laptop.

## Step 7



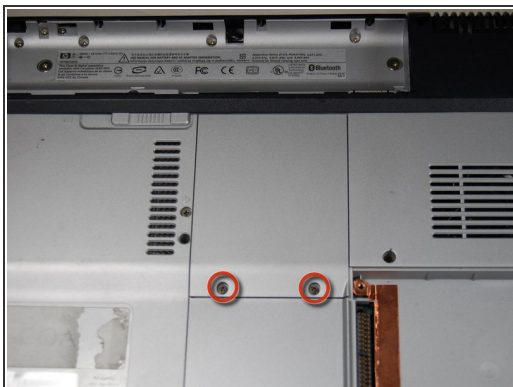
- ❗ This particular laptop does not contain a hard drive-- yours will.
- Identify the plastic tab located on the left side of the hard drive.
- Grasp the tab, gently lift up, and slide the tab to the left to remove the hard drive from the laptop.
- ❗ If you wish to replace your hard drive with another, the hard drive has a metal bracket screwed onto the sides of the casing. Unscrew the bracket from the old hard drive and screw it onto the new hard drive before inserting into the laptop.

## Step 8 — RAM



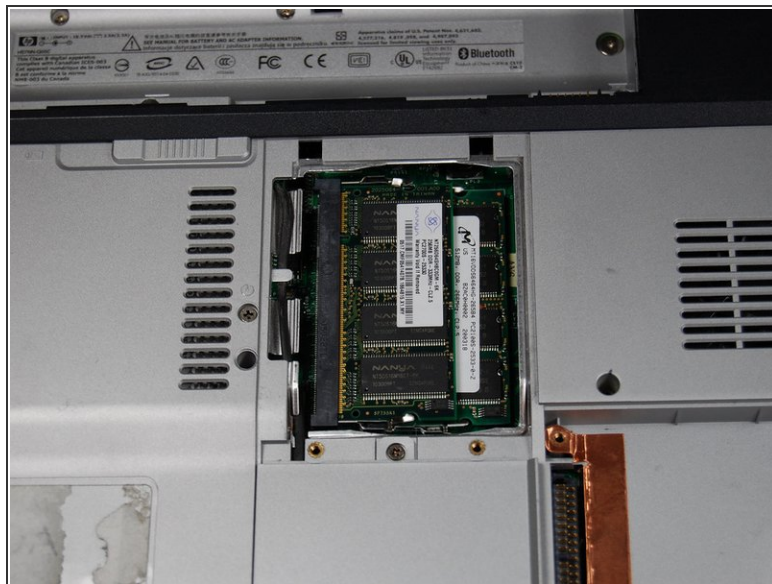
- Locate RAM access door on the bottom side of the laptop.

## Step 9



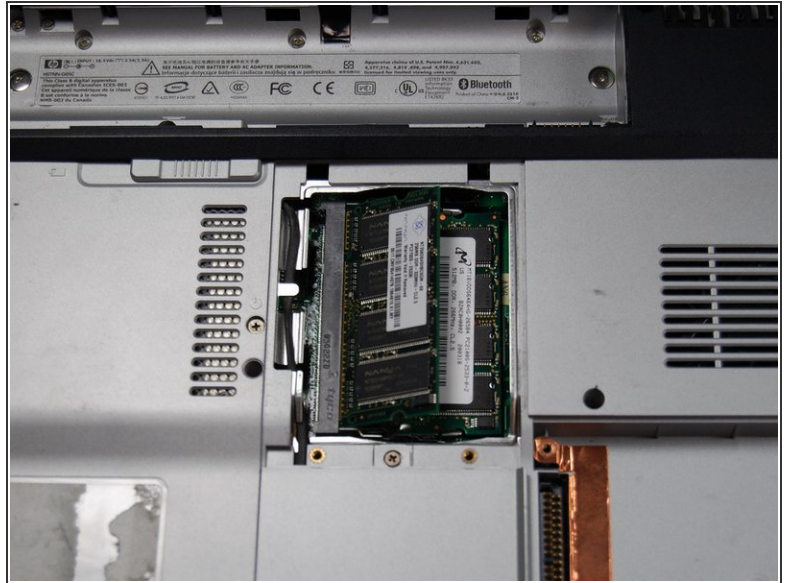
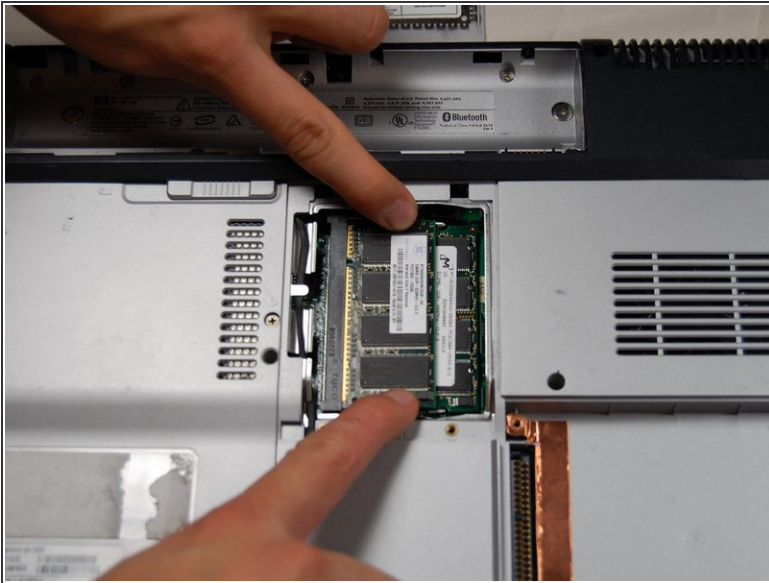
- Locate the two screws holding down the RAM access cover
- Unscrew the two screws with a size 00 Philips screwdriver.
- ⓘ Note: The screws do not detach from the cover.

## Step 10



- Lift up on the screw side of the RAM access cover to remove it.

## Step 11



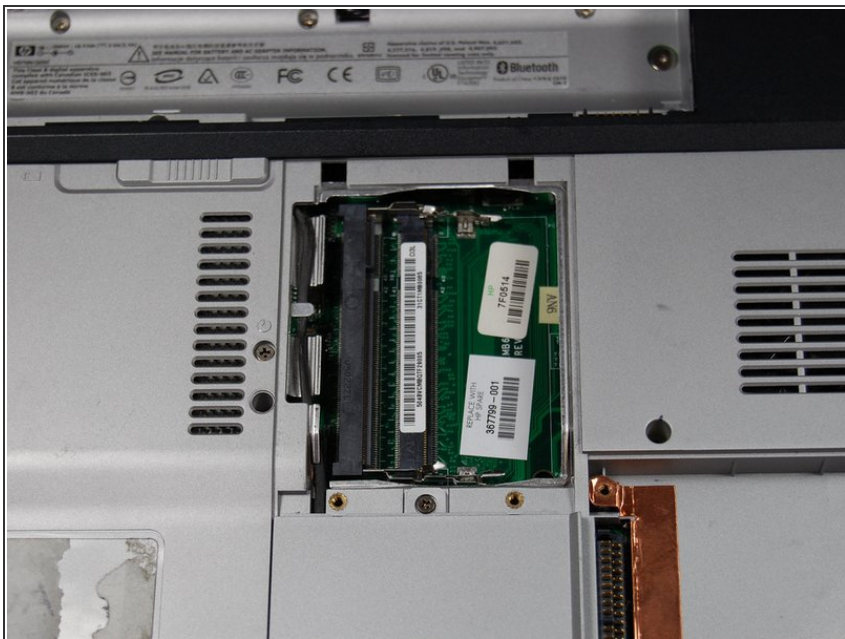
- Gently pull apart the metal tabs located on both sides of the stick of RAM.
- The RAM stick should tilt upwards.

## Step 12



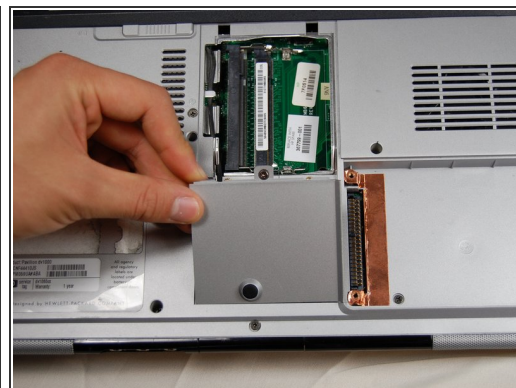
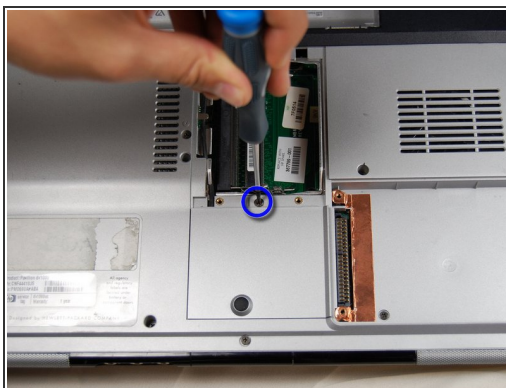
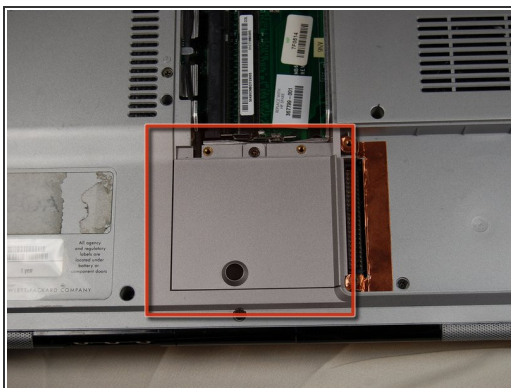
- Gently lift the the RAM up and out of its seat.

## Step 13



- Repeat the previous two steps for the remaining stick of RAM.

## Step 14 — Bluetooth Card



- Locate the small panel below the panel you just removed.
- Loosen the one screw in the middle with a #00 Phillips screwdriver. Again, the screw will not fall out of the panel when loosened.
- Lift the panel up and out of its slot to remove.

## Step 15



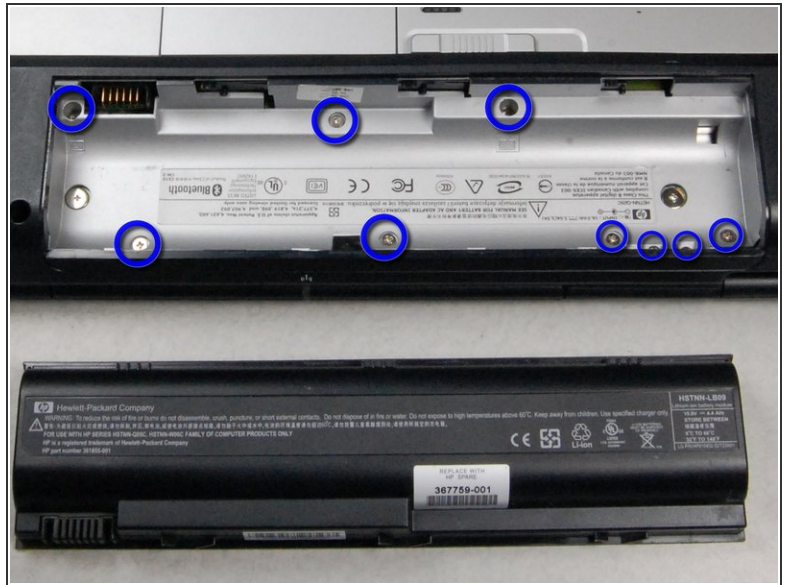
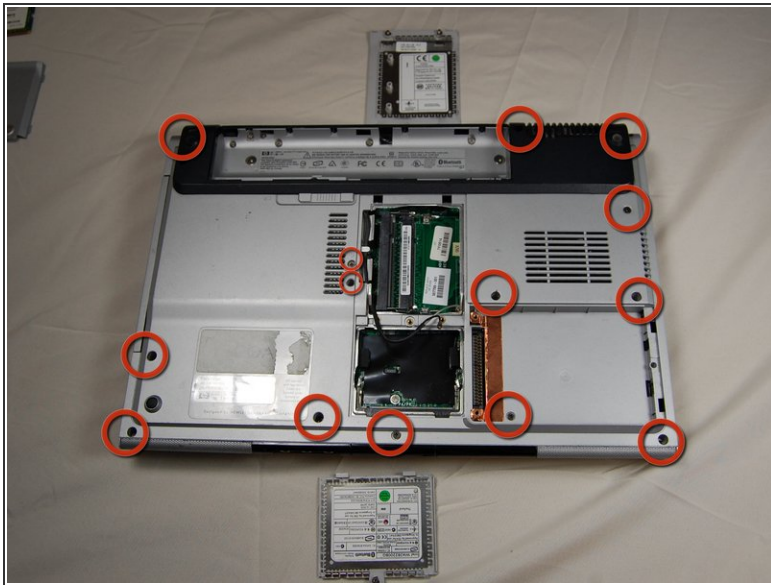
- Identify the two connections at the top of the bluetooth card.
- Using your fingers, gently pull up on the white clip until it releases.
- Remove the black clip in the same manner as the white clip

## Step 16



- Locate the two clips on either side of the Bluetooth card.
- Using your fingers, press the clips outwards, away from the card until the card pops up.
- Grab the card gently from the top and pull the card up and out of the slot.

## Step 17 — Back Cover



- Remove and set aside all of the highlighted screws in the first picture with a #00 Phillips screwdriver.
  - Remove and separately set aside all of the highlighted screws in the second picture with a #00 Phillips screwdriver.
- ⚠ Caution: There are two more screws to remove, so do not try and remove the back cover yet.

## Step 18

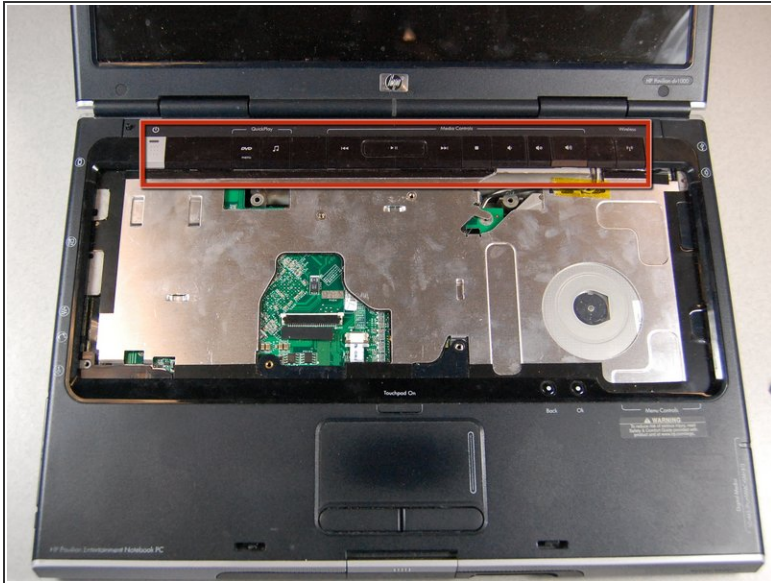


- Turn the laptop right side up, and open it to reveal the keyboard.

⚠ The keyboard should lift up and out easily, but be careful because it is attached to the computer by a ribbon cable.

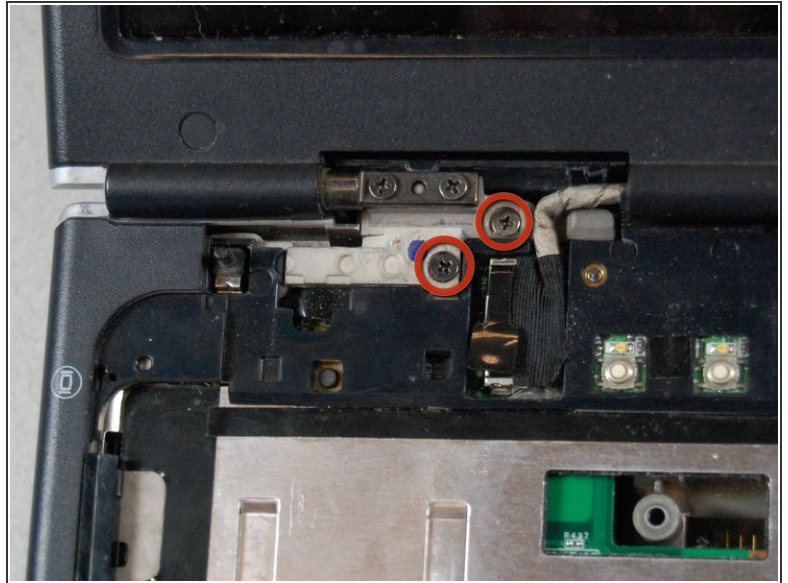
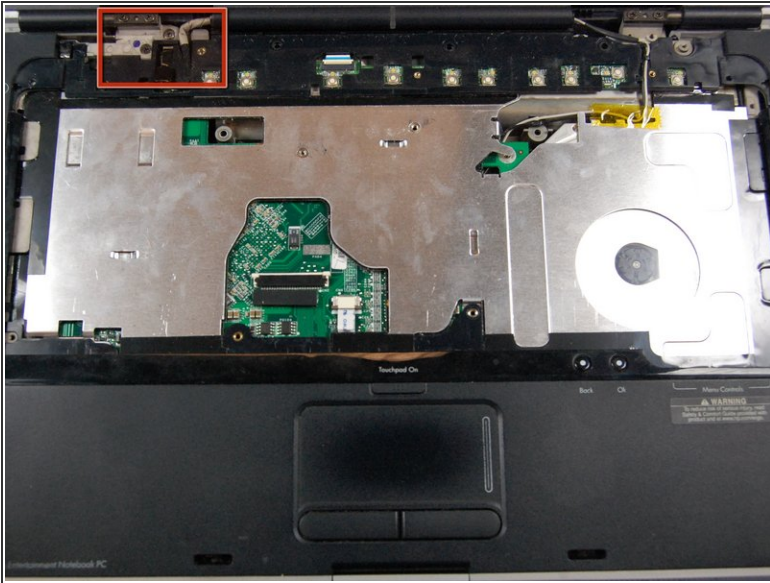
- Press the two white clips forward and lift the tape out of the clip.

## Step 19



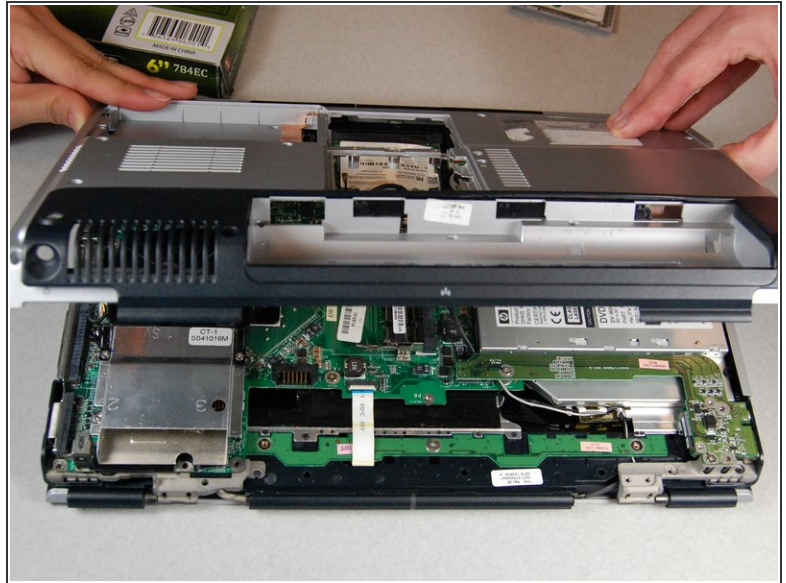
- Locate the MediaKeys. They are the black strip right above where the keyboard was.
  - Using the spudger, gently pry up the MediaKeys.
- ⚠ If you feel any resistance, stop and check you have removed all of the screws from the battery compartment.

## Step 20



- Remove the two screws next to the left hinge of the monitor with a #00 Phillips screwdriver.
- Keep these screws separate from the other screws you have removed.

## Step 21



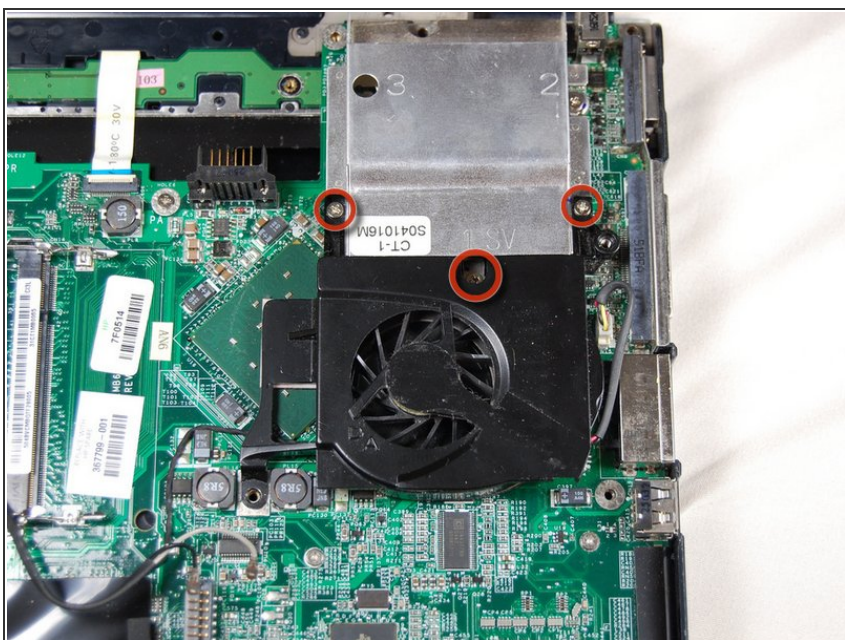
- Using the spudger, loosen the casing behind the battery and the two sides.
  - The case should lift easily upwards and outwards towards you if you are facing the battery compartment.
- ⚠ Make sure the cord that was attached to the Bluetooth cable is not still threaded through the case when trying to remove it.
- ⚠ If you feel any resistance, stop. Do not force anything. Go back through the steps and make sure you loosened everything.

## Step 22 — Fan



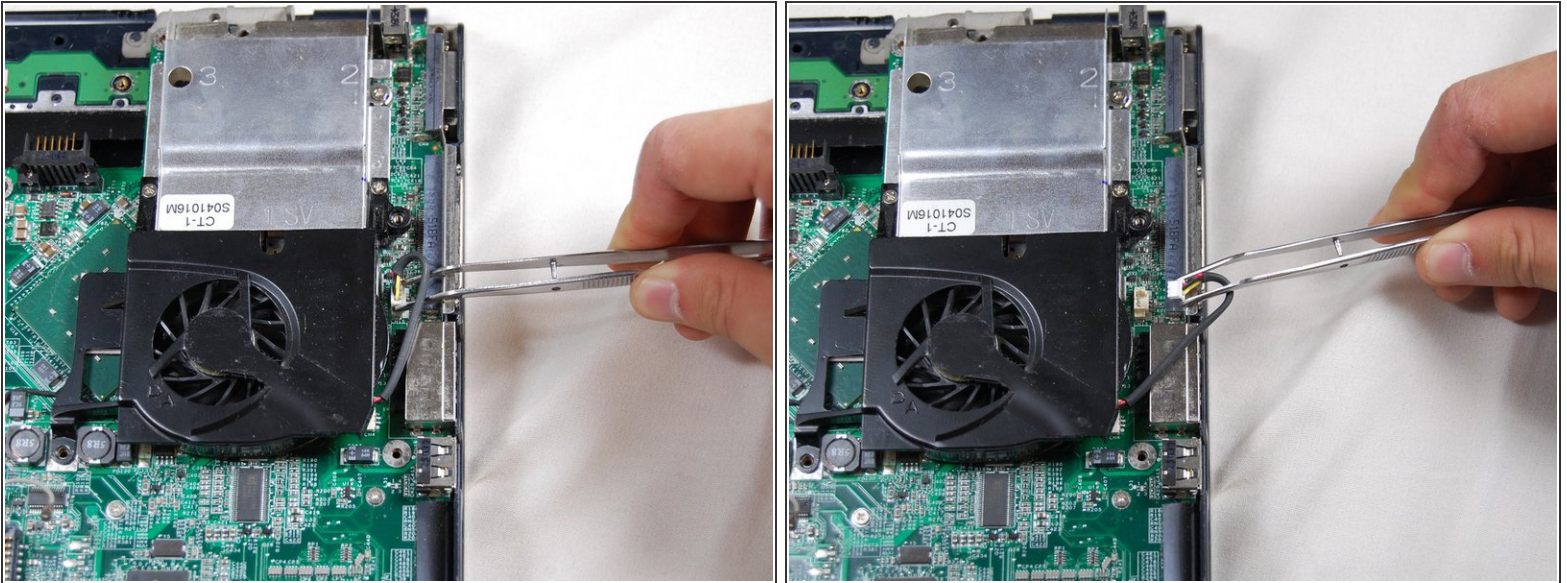
- With the back cover removed, locate the fan.

## Step 23



- Remove the highlighted screws with the #00 Phillips screwdriver.

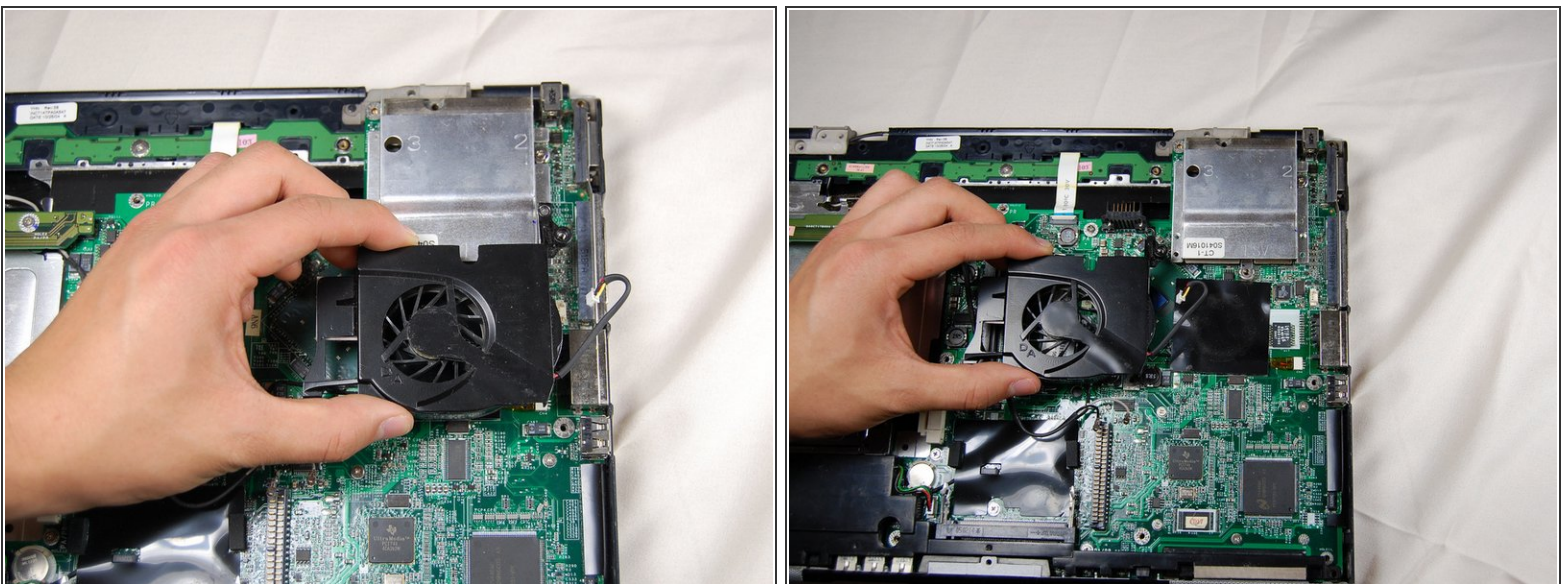
## Step 24



**⚠** After removing the screw, use your tweezers to remove the wire connecting the fan to the board. Do not pull the fan out immediately or it may damage the fan and/or the computer.

- Squeeze the white plastic part of the wire connected to the computer and gently pull. This will detach the fan from the computer.

## Step 25



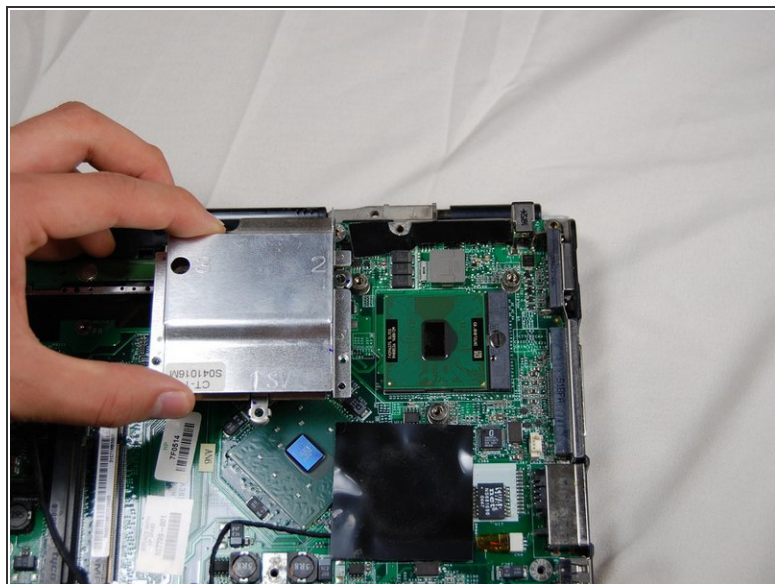
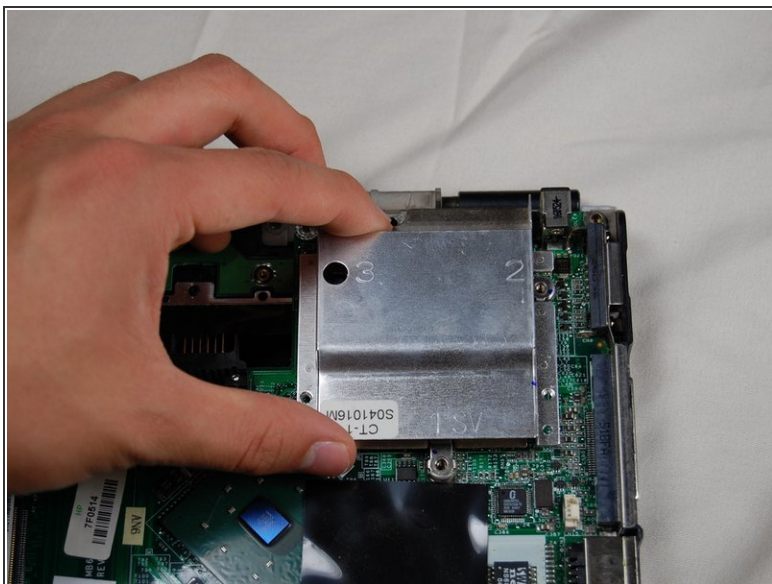
- With the wire removed, the fan should lift up easily from the board.

## Step 26 — Heat Sink



- After removing the fan, locate the heat sink. The heat sink is the silver box above where the fan used to be.
- Remove the two highlighted screws with a #00 Phillips screwdriver.

## Step 27



- After removing the screws gently lift the heat sink away from the computer.

To reassemble your device, follow these instructions in reverse order.