



HP Pavilion dv2000 Wireless Card Replacement

Replacing the wireless card on your HP Pavilion dv2000 Laptop.

Written By: Erik Muniz



INTRODUCTION

This guide will help you replace the wireless card on you HP Pavilion dv2000.





TOOLS:

- [Phillips #00 Screwdriver](#) (1)
 - [Tweezers](#) (1)
-

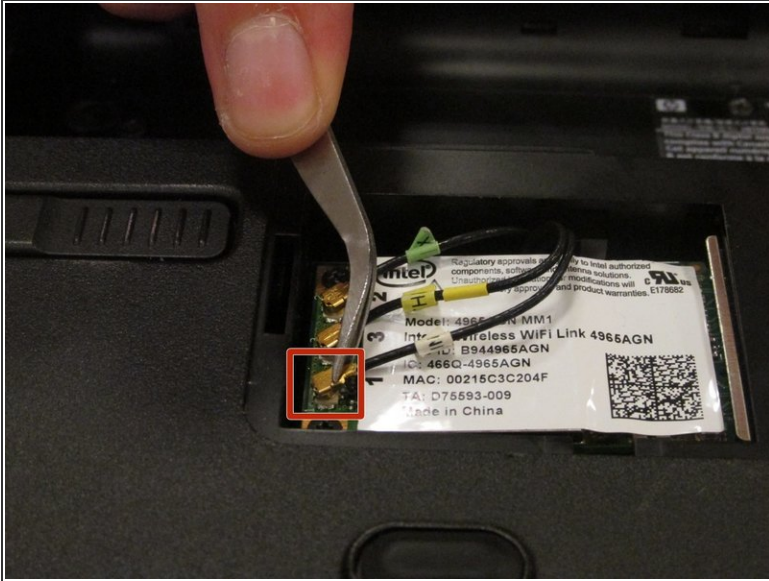
Step 1 — Wireless Card



 Make sure your computer is powered down and unplugged from the charger before removing any components.

- Locate and unscrew the single 3.8mm screw holding the wireless card casing in place.
- Lift up and remove the wireless card casing.
 -  The 3.8mm screw will remain in the wireless card casing after you unscrew it.

Step 2



- Use a pair of tweezers to remove the three antennas from their sockets.
- ⚠ Remove the antennas by the contacts connected to the socket, the crimps connecting the wires and the sockets are delicate and are easily damaged.

Step 3



- Remove the two 3.8mm screws holding down the wireless card with your [Phillips #00 Screwdriver](#).
- Gently pull out your wireless card from its top side to remove it from its holding.

To reassemble your device, follow these instructions in reverse order.