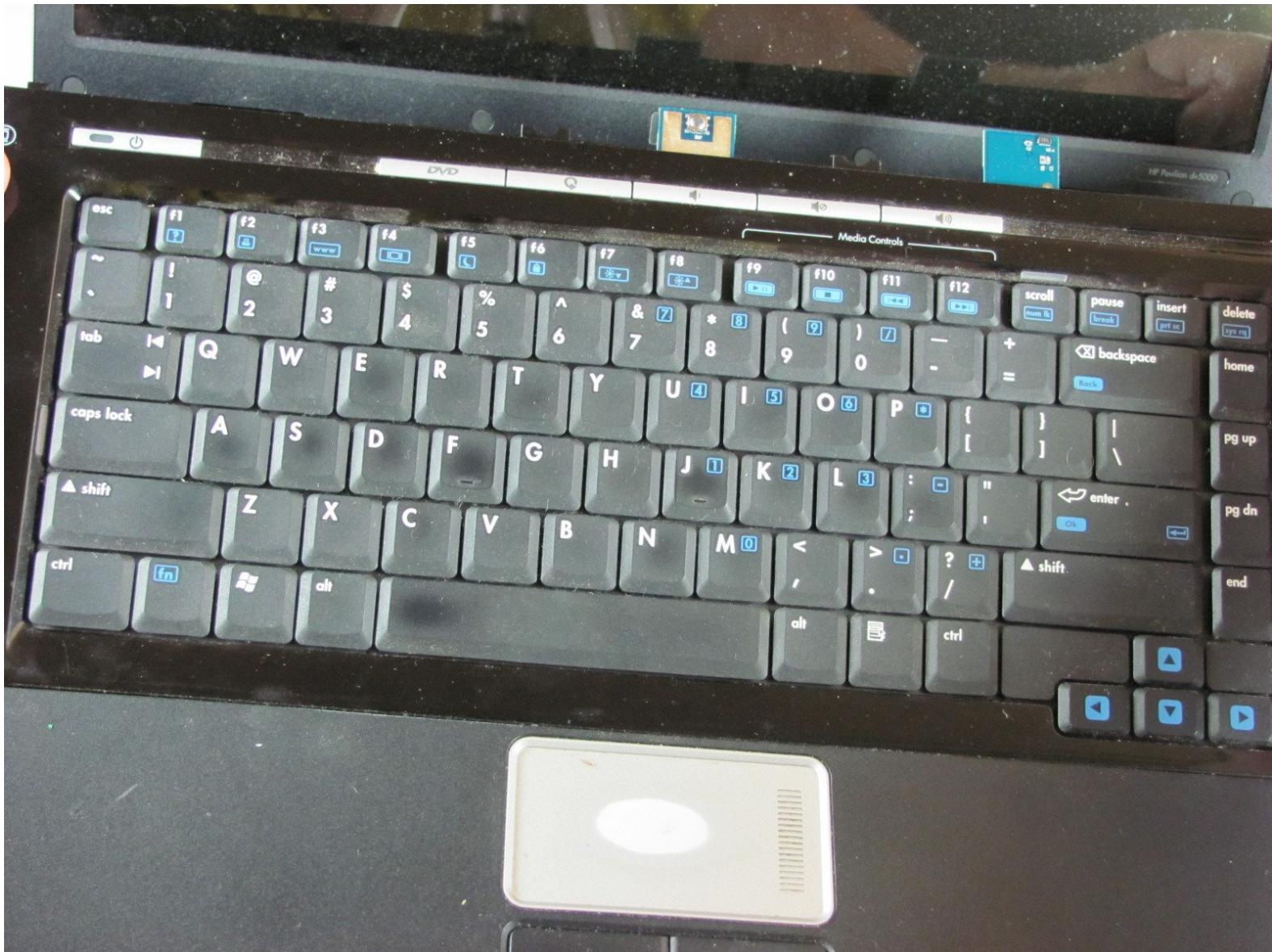




# HP Pavilion dv5000 Keyboard Replacement

Remove the keyboard

Written By: Alex Kwok



---

## INTRODUCTION

This guide will show you how to remove the keyboard, in case you need to replace it.



### TOOLS:

- [Phillips #00 Screwdriver](#) (1)
-

## Step 1 — Battery



- ⚠ Turn off and unplug the computer from all external power sources.
- Shut the screen, and lay the computer face-down on a flat, sturdy surface. Orient the computer to match the image.
- Locate the battery release switch, as indicated in the image. Sliding this switch from right to left will release the battery.
- Remove the battery.

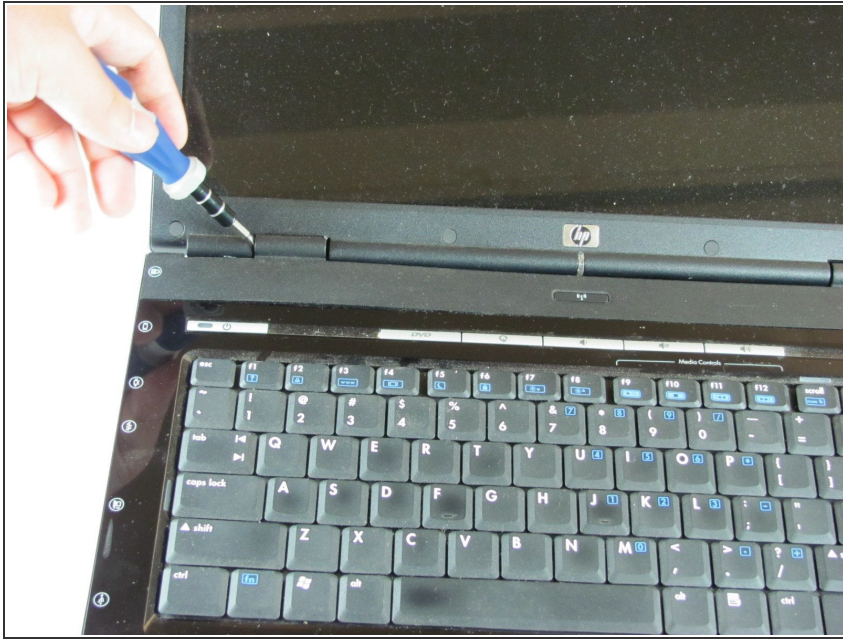
## Step 2 — Keyboard



- Remove the two 11.0mm screws at the corners on either side of the battery compartment.
- Remove the three 6.0mm screws.
- Remove the two 5.0mm screws.
- Remove the 6.0mm screw in the middle of the battery compartment.



## Step 3



- Turn the computer over and open the screen. This provides access to the screen hinges.
- The keyboard switch cover is attached to the computer with a series of snaps. With a flathead screwdriver, pry up the switch cover until it pops free.

## Step 4



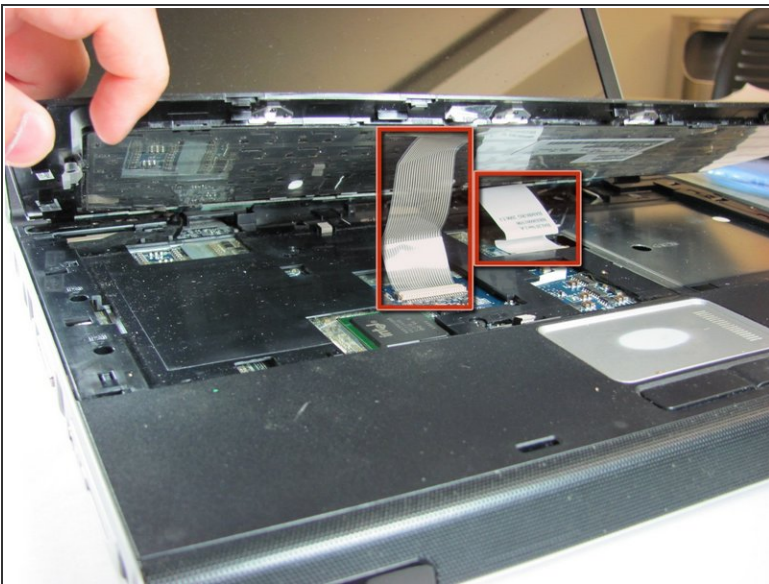
- Be careful not to bend the keyboard switch cover too far when removing it.

## Step 5



- Next, remove the keyboard. Push on the keyboard frame above the function keys and slide the keyboard toward the screen.

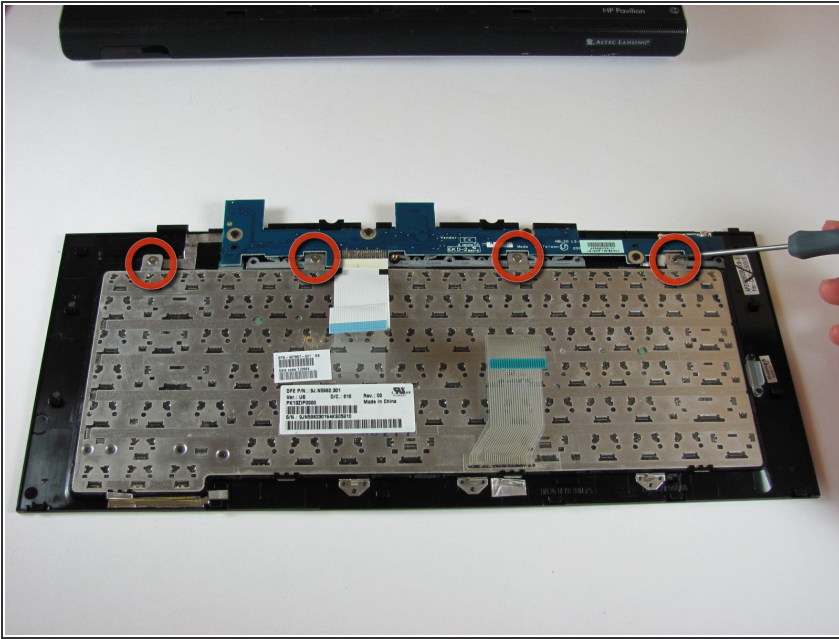
## Step 6



- Carefully lift the trackpad-side edge of the keyboard to reveal the LED and keyboard cable connectors.
- Detach the cable connectors from the computer by gripping each cable connector close to the computer contact point and pulling up gently.



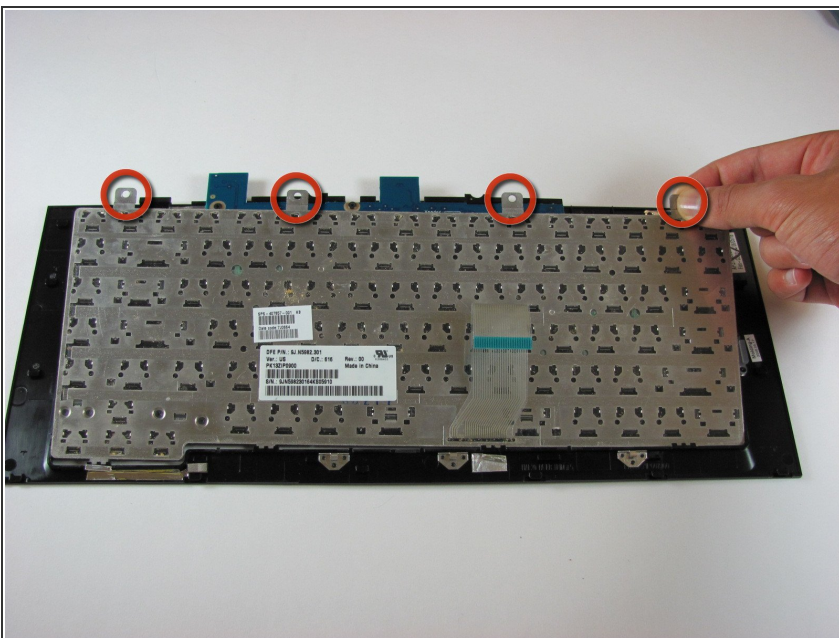
## Step 7



**i** This step is for replacing the keyboard only. If you are not replacing the keyboard, skip this step.

- Lay the keyboard face down.
- Remove the four 3.00mm screws that attach the keyboard to the keyboard frame.

## Step 8



**i** This step is for replacing the keyboard only. If you are not replacing the keyboard, skip this step.

- Lift the keyboard off the keyboard frame.

To reassemble your device, follow these instructions in reverse order.