



HP Pavilion dv5000 Power Supply Port Replacement

Teaches how to access and replace the power supply port. (The part the A/C power adapter plugs into)

Written By: Thomas Leman





TOOLS:

- [Phillips #00 Screwdriver](#) (1)
- [Phillips #0 Screwdriver](#) (1)
- [iFixit Opening Tools](#) (1)
- [Magnetic Project Mat](#) (1)

Step 1 — Battery



- ⚠ Turn off and unplug the computer from all external power sources.
- Shut the screen, and lay the computer face-down on a flat, sturdy surface. Orient the computer to match the image.
- Locate the battery release switch, as indicated in the image. Sliding this switch from right to left will release the battery.
- Remove the battery.

Step 2 — RAM Cover



- Remove the two 5mm screws securing the right side of the RAM cover to the computer frame.
- Lift the right side of the RAM cover to remove.

Step 3 — Wifi Card



- The wifi card is connected to the computer with the two antenna lead wires.
- ⓘ Note where the white AUX wire and the black MAIN wire connect to the wifi card before disconnecting.

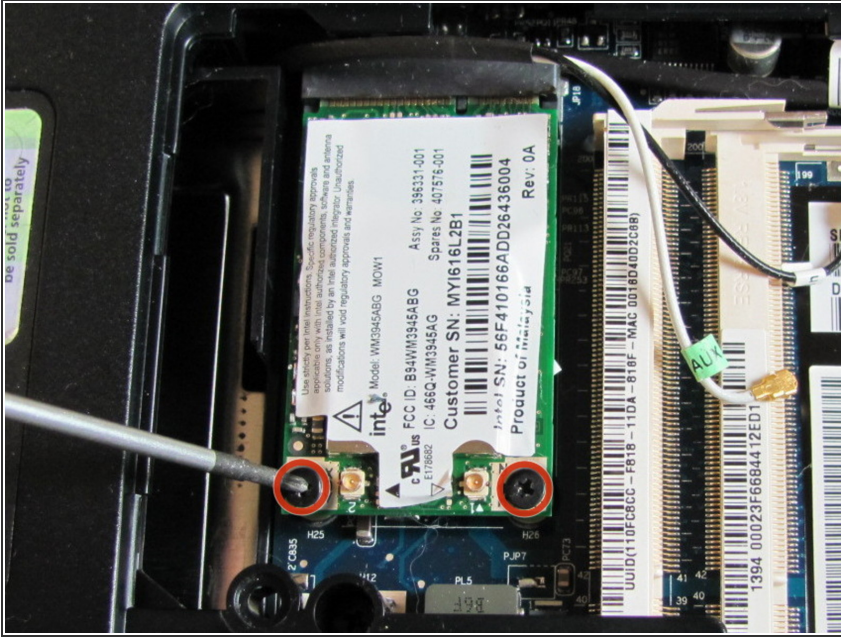
Step 4



- Disconnect the antenna leads from the wifi card by lifting the gold ends of the wires off the prongs on the wifi card.
- The white wire connects to the AUX terminal.
- The black wire connects to the MAIN terminal.

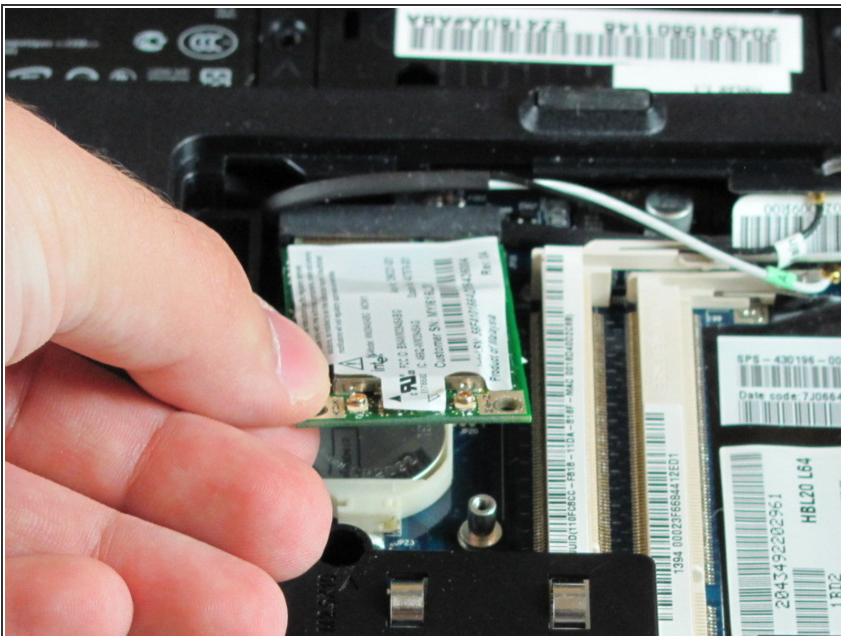
This document was generated on 2020-04-18 01:09:29 PM (MST).

Step 5



- Remove the two 6.0mm screws securing the wifi card to the computer.

Step 6



- Remove the wifi card.

Step 7 — Hard Drive



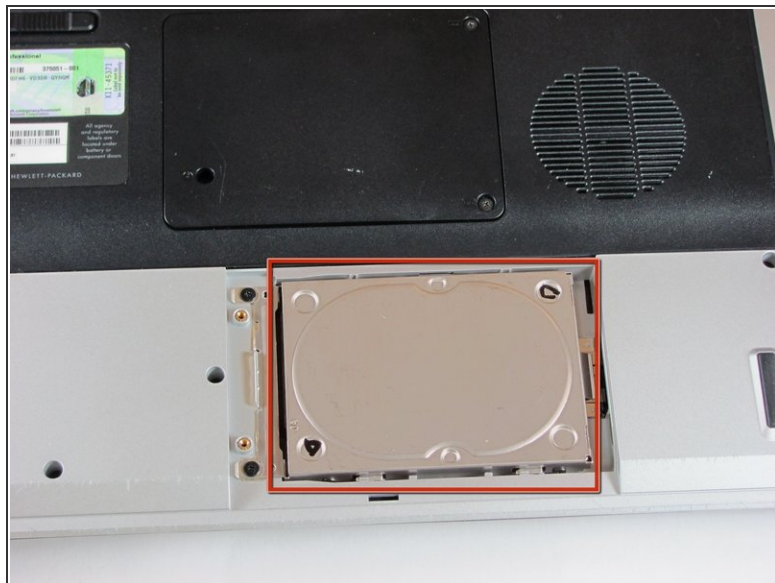
- Locate the hard drive cover. Note that in this image, the RAM cover is still in place.

Step 8



- Remove the two screws securing the hard drive cover.

Step 9



- Remove the hard drive cover.
- ⓘ The hard drive is now accessible.

Step 10



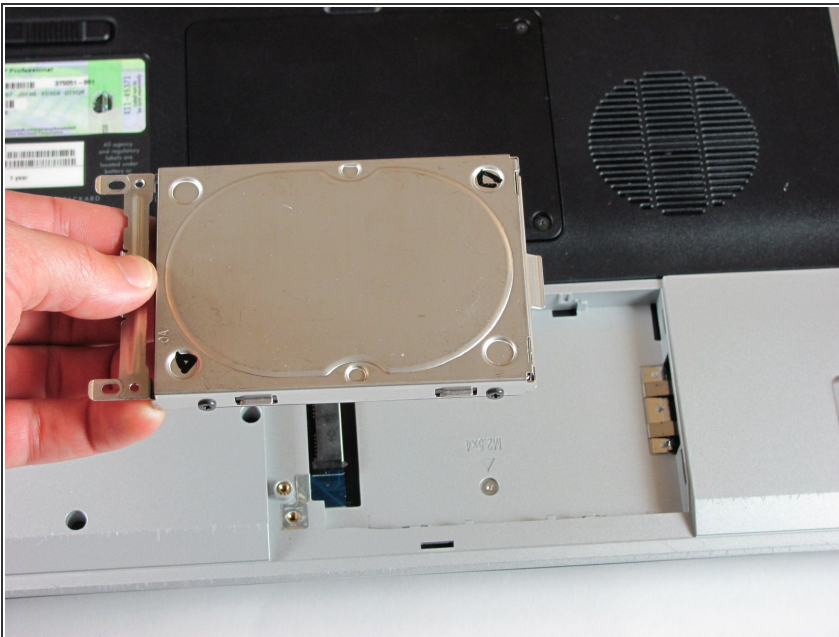
- Remove the two 5.0mm screws securing the hard drive bracket.

Step 11



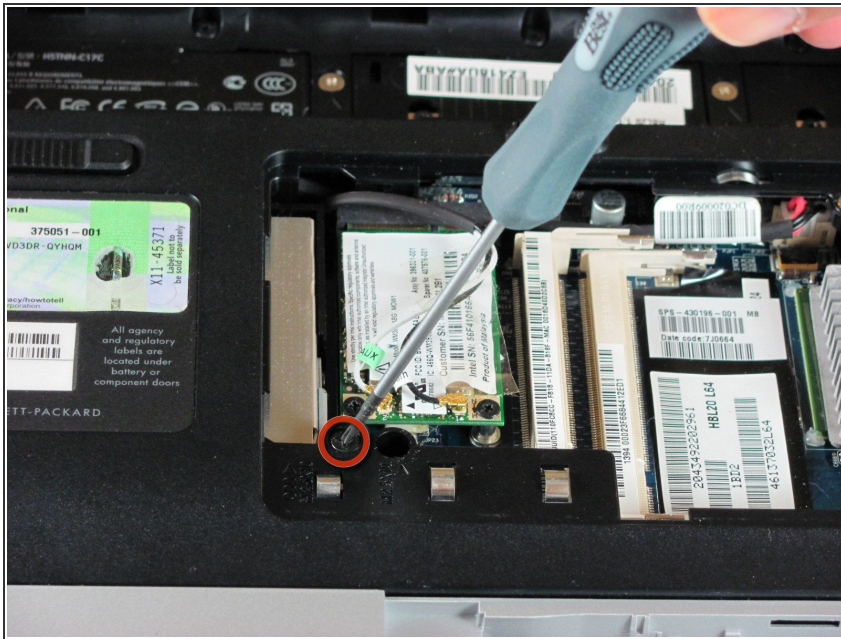
- Slide the hard drive to the right until the edge of the hard drive is flush with the computer frame.
- Lift the hard drive out of the hard drive bay, left side first.

Step 12



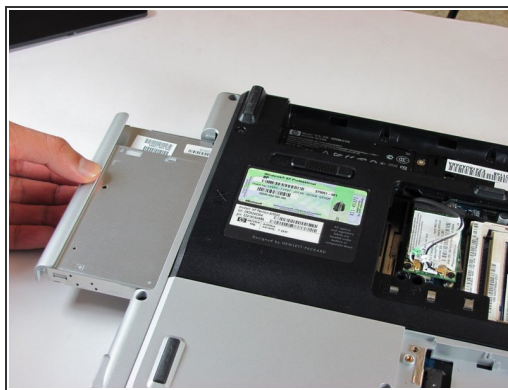
- Remove the hard drive.
- ⓘ If you are replacing the hard drive, remove the four additional screws (two on each side) securing the metal shield to the hard drive. Then, remove the shield from the drive.

Step 13 — Optical Drive



- Remove the 11.0mm screw securing the optical drive to the computer.

Step 14



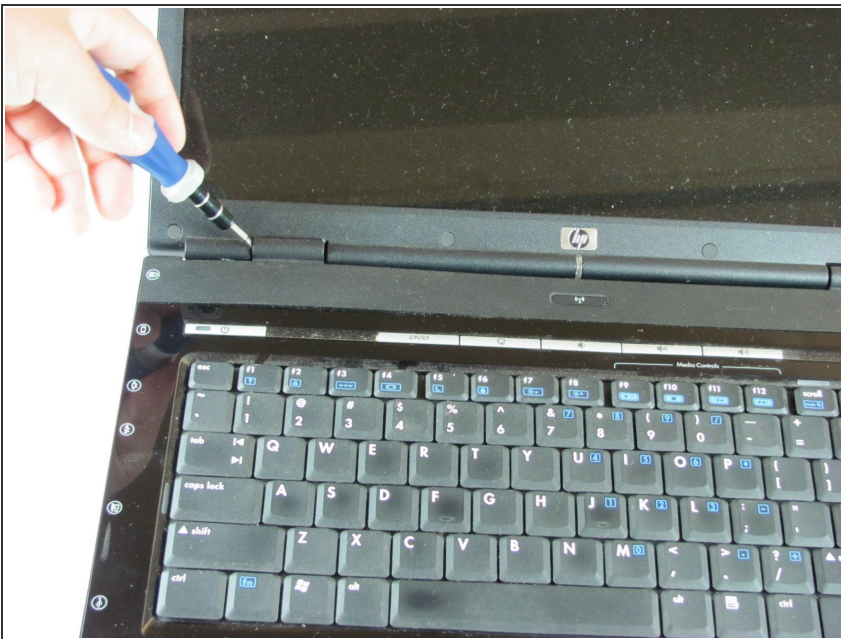
- Locate the optical drive. The optical drive is located on the left side of the RAM bay.
- Press the exposed edge of the optical drive gently with the spudger until the drive releases from the computer frame.
- Pull the optical drive completely out of the computer frame.

Step 15 — Keyboard



- Remove the two 11.0mm screws at the corners on either side of the battery compartment.
- Remove the three 6.0mm screws.
- Remove the two 5.0mm screws.
- Remove the 6.0mm screw in the middle of the battery compartment.

Step 16



- Turn the computer over and open the screen. This provides access to the screen hinges.
- The keyboard switch cover is attached to the computer with a series of snaps. With a flathead screwdriver, pry up the switch cover until it pops free.

Step 17



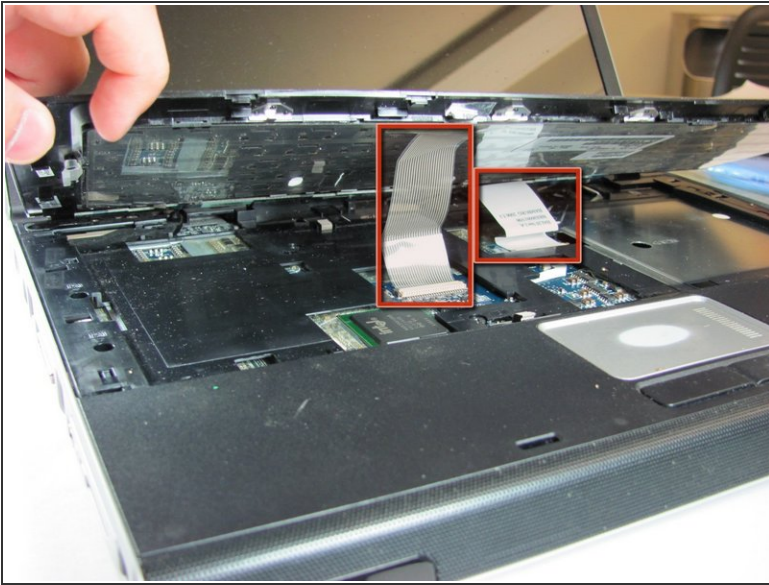
- Be careful not to bend the keyboard switch cover too far when removing it.

Step 18



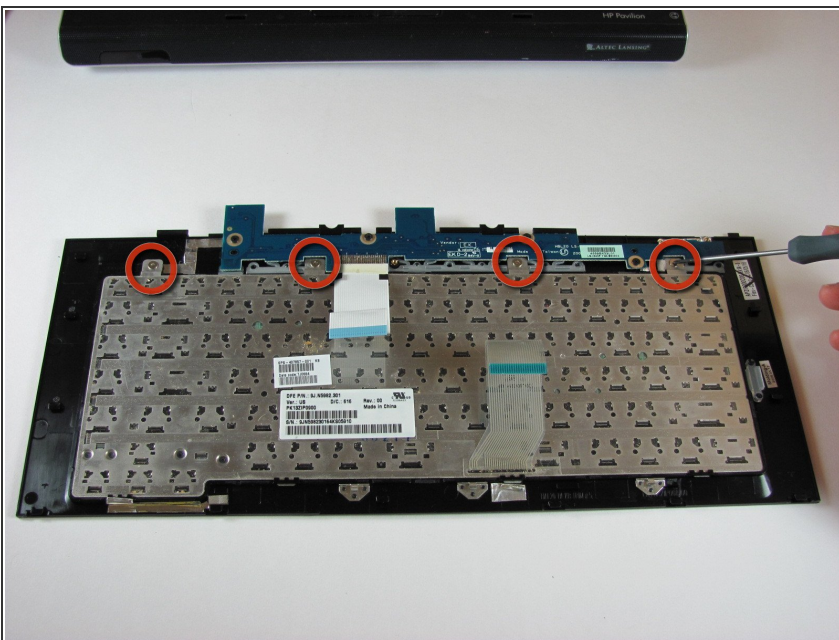
- Next, remove the keyboard. Push on the keyboard frame above the function keys and slide the keyboard toward the screen.

Step 19



- Carefully lift the trackpad-side edge of the keyboard to reveal the LED and keyboard cable connectors.
- Detach the cable connectors from the computer by gripping each cable connector close to the computer contact point and pulling up gently.

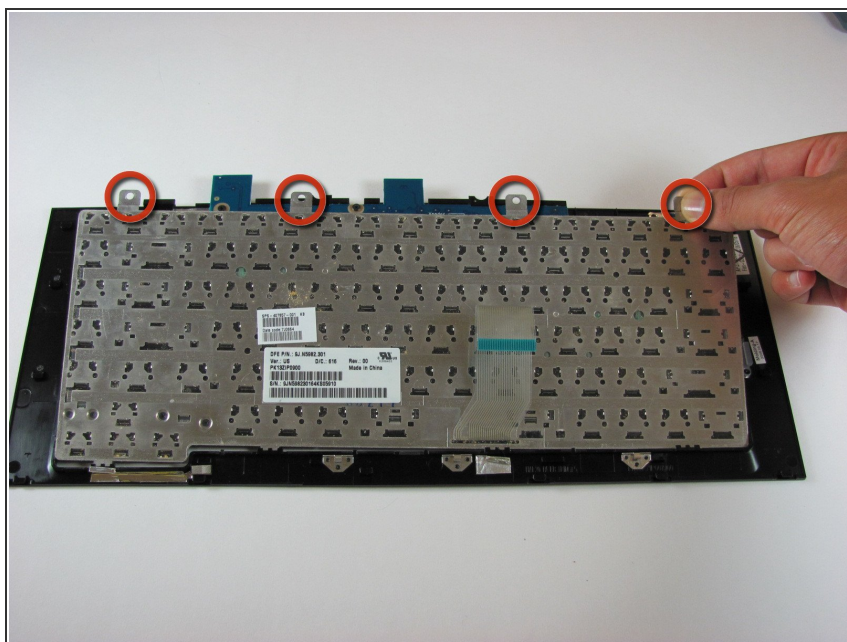
Step 20



i This step is for replacing the keyboard only. If you are not replacing the keyboard, skip this step.

- Lay the keyboard face down.
- Remove the four 3.00mm screws that attach the keyboard to the keyboard frame.

Step 21



i This step is for replacing the keyboard only. If you are not replacing the keyboard, skip this step.

- Lift the keyboard off the keyboard frame.

Step 22 — Trackpad



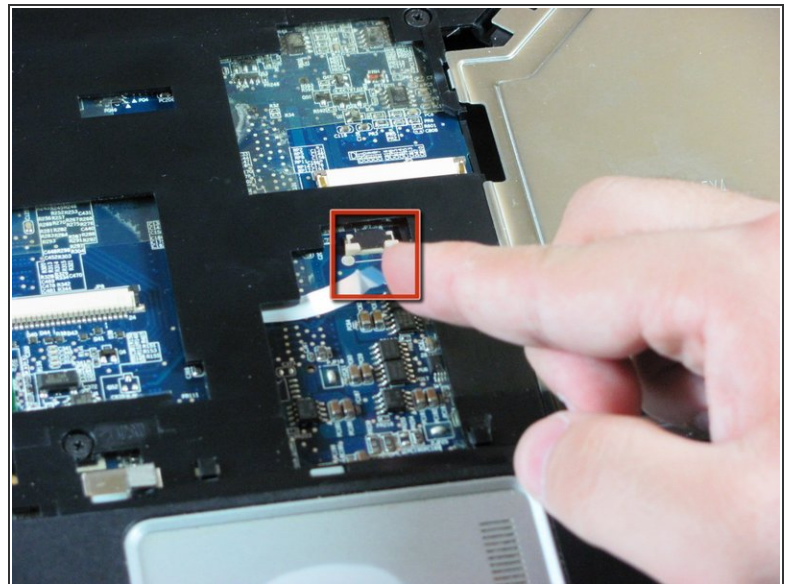
- Remove the two 3.0mm screws on the side of the laptop shown.
- Remove the one 5.0mm screw in the hard drive compartment.

Step 23



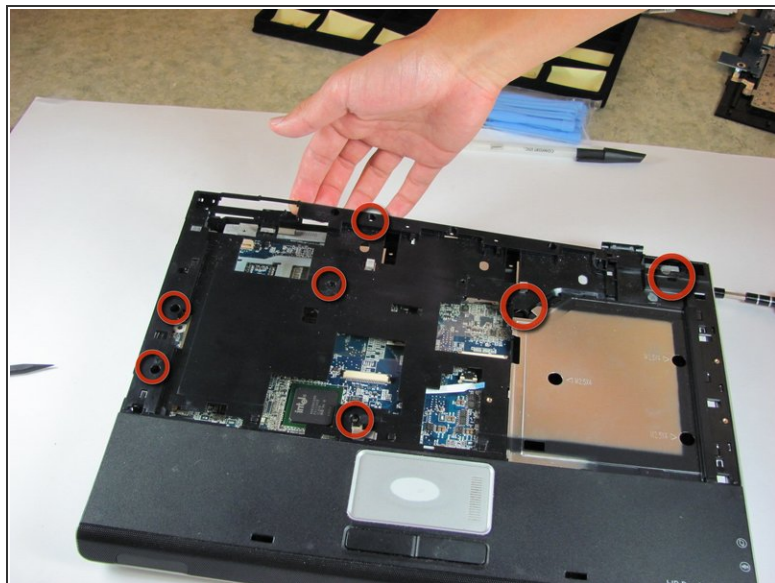
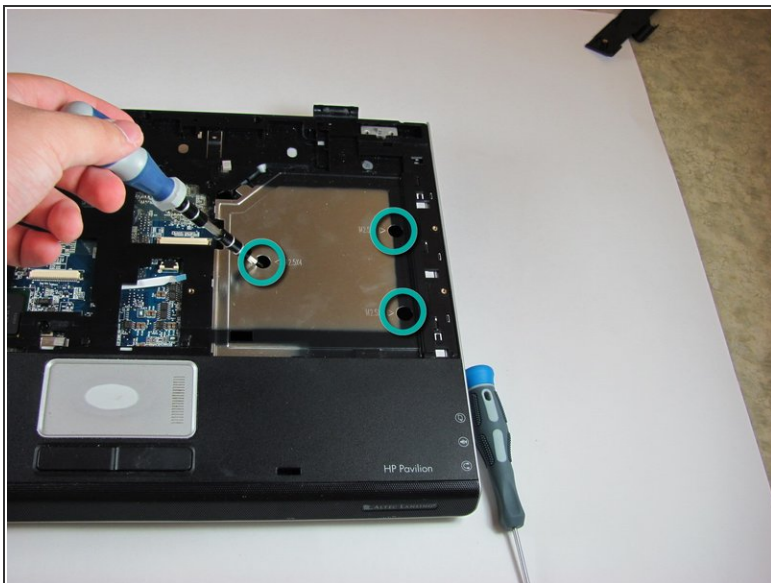
- Remove the eight 10mm screws securing the top cover to the laptop.

Step 24



- Flip the computer over and disconnect the Touchpad Cable.

Step 25



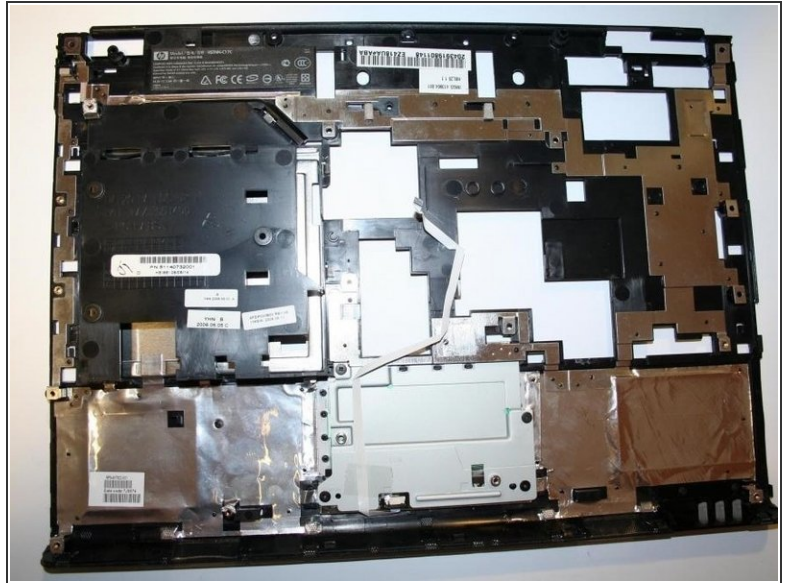
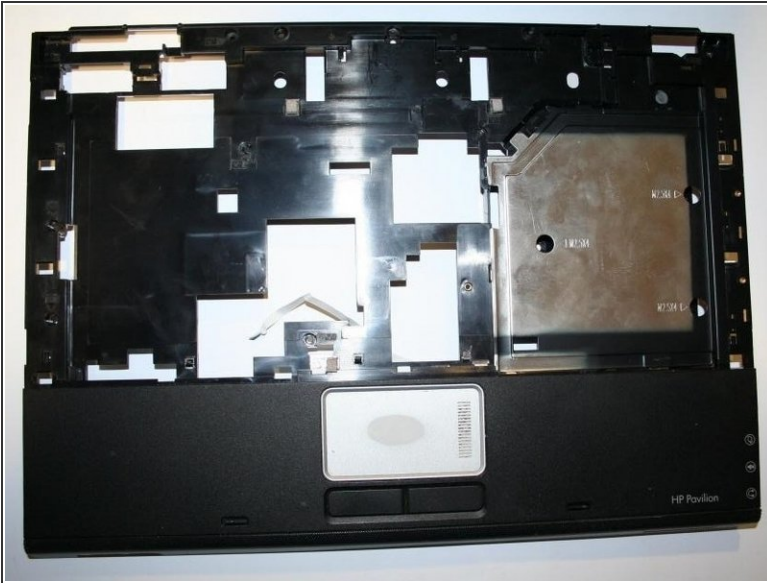
- Remove the silver 5.0mm screws Located in the silver area of the top cover
- Remove the seven 10.0mm screws located on the top cover.

Step 26



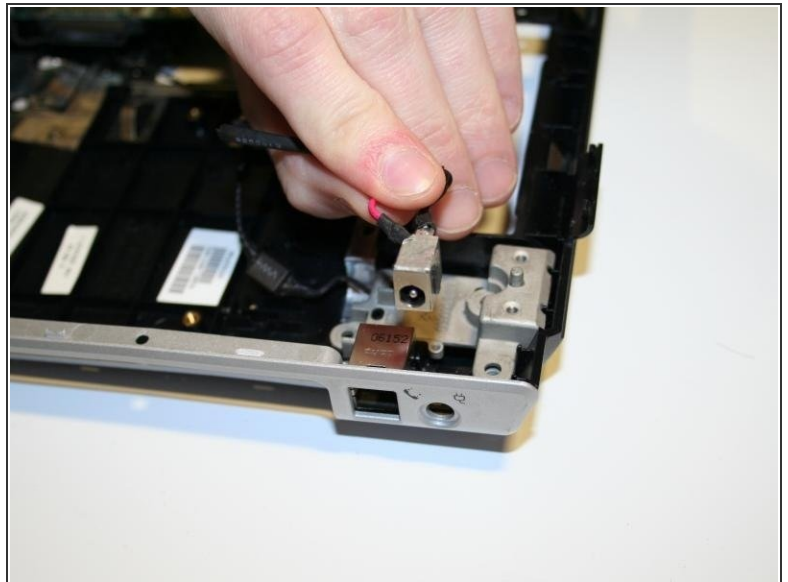
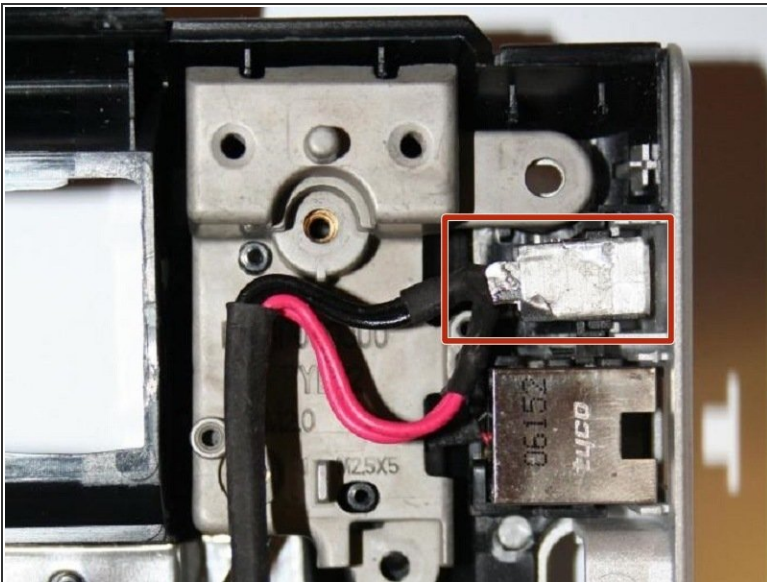
- Lift off the top cover and remove it. Lift off from the back.

Step 27



- Congratulations! You're ready to install the new assembly and reassemble your laptop!

Step 28 — Power Supply Port



- Locate the Power Supply Port
- Lift the port up to remove it from its seated position

To reassemble your device, follow these instructions in reverse order.