



# HP Pavilion dv5000 RTC Battery Replacement

Replace the RTC battery so the system clock is accurate.

Written By: Farid Khoshnevisan



---

## INTRODUCTION

How to gain access to the RTC Battery and replace it.



### TOOLS:

- [Phillips #00 Screwdriver](#) (1)
-

## Step 1 — Battery



- ⚠ Turn off and unplug the computer from all external power sources.
- Shut the screen, and lay the computer face-down on a flat, sturdy surface. Orient the computer to match the image.
- Locate the battery release switch, as indicated in the image. Sliding this switch from right to left will release the battery.
- Remove the battery.

## Step 2 — RAM Cover



- Remove the two 5mm screws securing the right side of the RAM cover to the computer frame.
- Lift the right side of the RAM cover to remove.

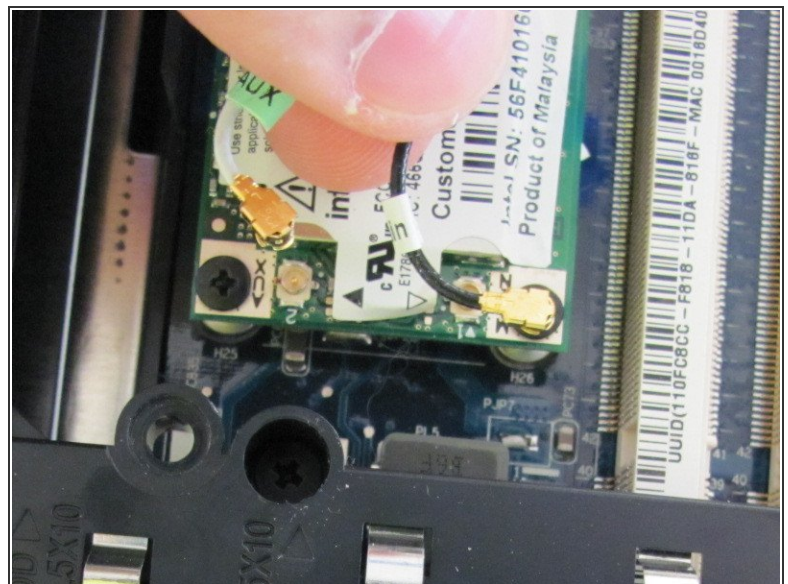


## Step 3 — Wifi Card



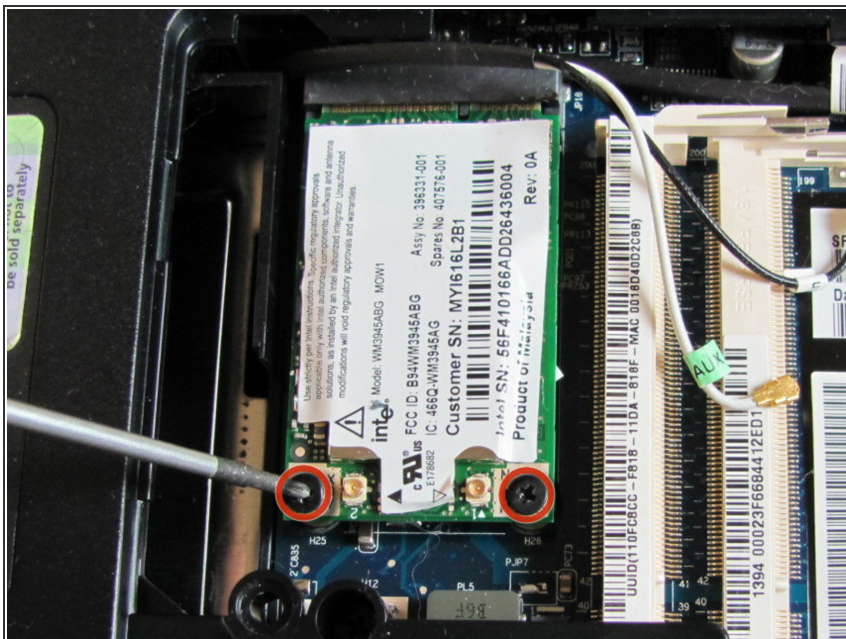
- The wifi card is connected to the computer with the two antenna lead wires.
- ⓘ Note where the white AUX wire and the black MAIN wire connect to the wifi card before disconnecting.

## Step 4



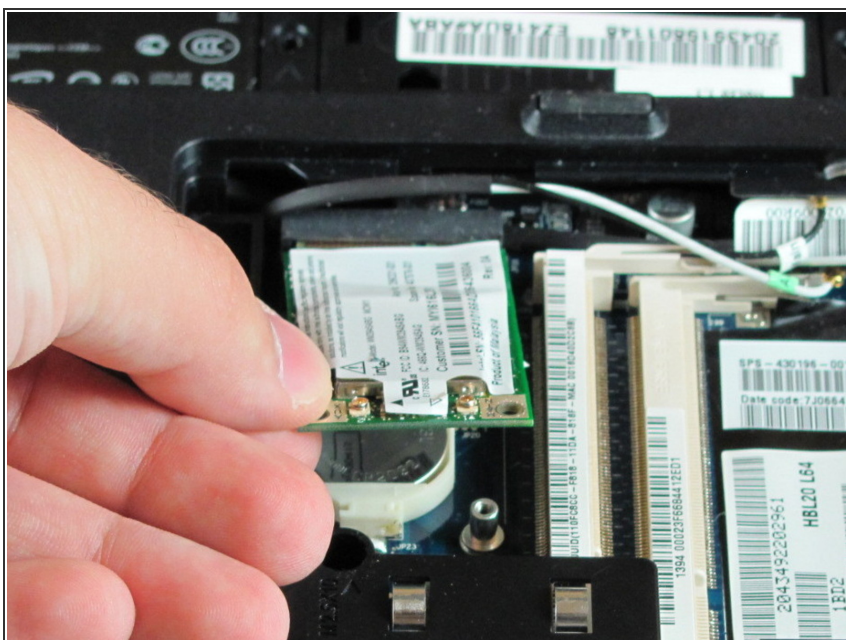
- Disconnect the antenna leads from the wifi card by lifting the gold ends of the wires off the prongs on the wifi card.
- The white wire connects to the AUX terminal.
- The black wire connects to the MAIN terminal.

## Step 5



- Remove the two 6.0mm screws securing the wifi card to the computer.

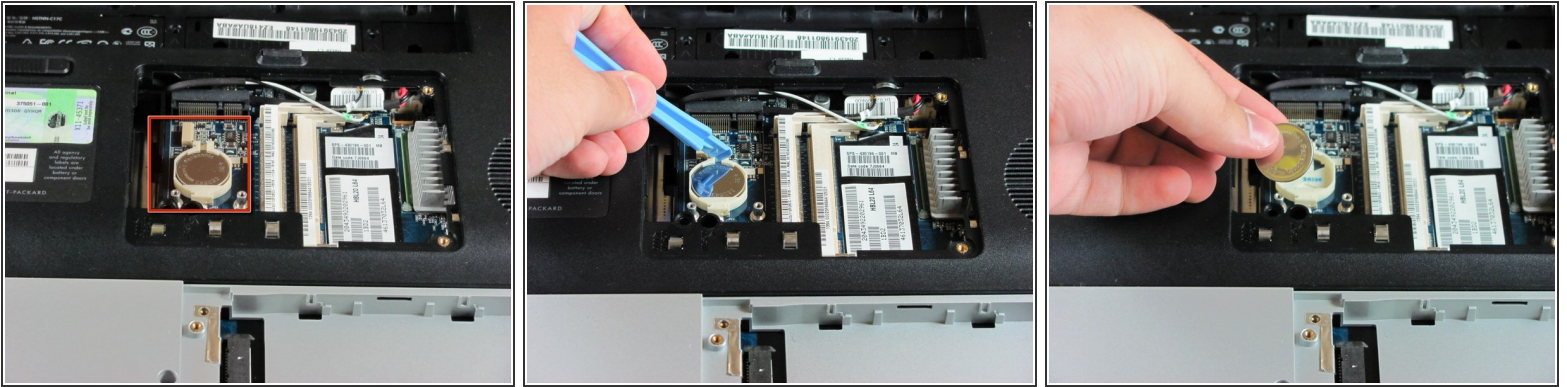
## Step 6



- Remove the wifi card.



## Step 7 — RTC Battery



- Remove the RTC Battery from the battery holder located under where the PCI module usually is.

To reassemble your device, follow these instructions in reverse order.