



# HP Pavilion dv5000 Screen Replacement

How to remove the screen.

Written By: Thanh Nguyen





## TOOLS:

- [Phillips #00 Screwdriver](#) (1)
- [iFixit Opening Tools](#) (1)
- [Spudger](#) (1)

## Step 1 — Battery



- ⚠ Turn off and unplug the computer from all external power sources.
- Shut the screen, and lay the computer face-down on a flat, sturdy surface. Orient the computer to match the image.
- Locate the battery release switch, as indicated in the image. Sliding this switch from right to left will release the battery.
- Remove the battery.

## Step 2 — RAM Cover



- Remove the two 5mm screws securing the right side of the RAM cover to the computer frame.
- Lift the right side of the RAM cover to remove.

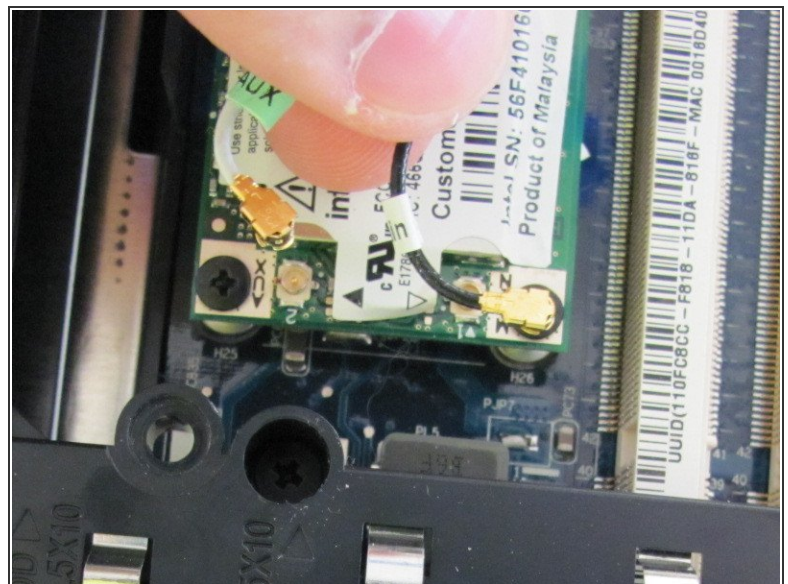


## Step 3 — Wifi Card



- The wifi card is connected to the computer with the two antenna lead wires.
- ⓘ Note where the white AUX wire and the black MAIN wire connect to the wifi card before disconnecting.

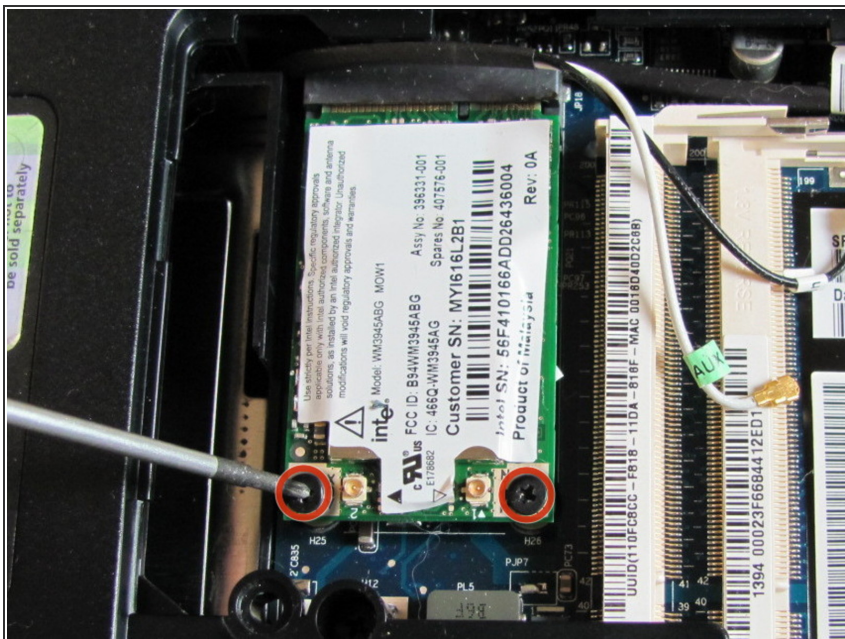
## Step 4



- Disconnect the antenna leads from the wifi card by lifting the gold ends of the wires off the prongs on the wifi card.
- The white wire connects to the AUX terminal.
- The black wire connects to the MAIN terminal.

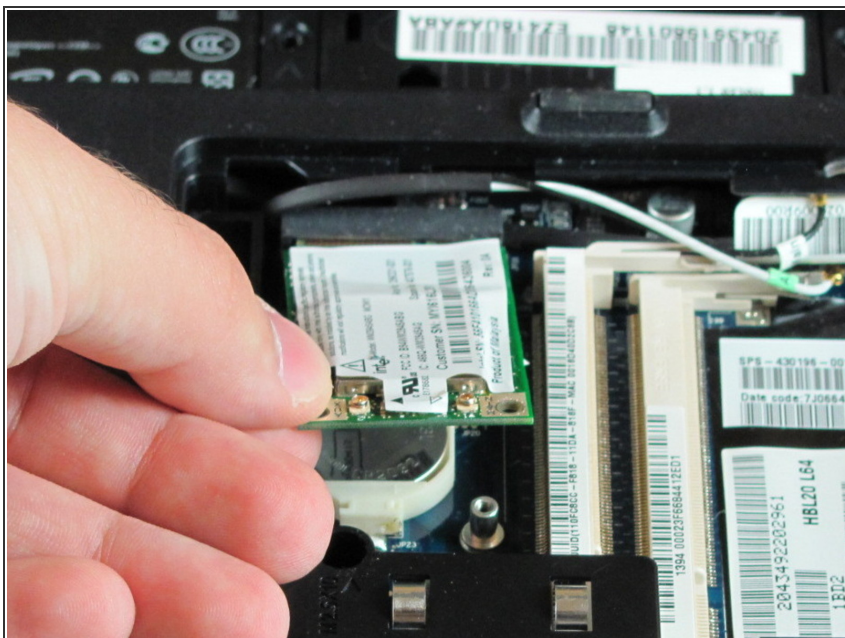
This document was generated on 2020-04-18 07:49:32 PM (MST).

## Step 5



- Remove the two 6.0mm screws securing the wifi card to the computer.

## Step 6



- Remove the wifi card.

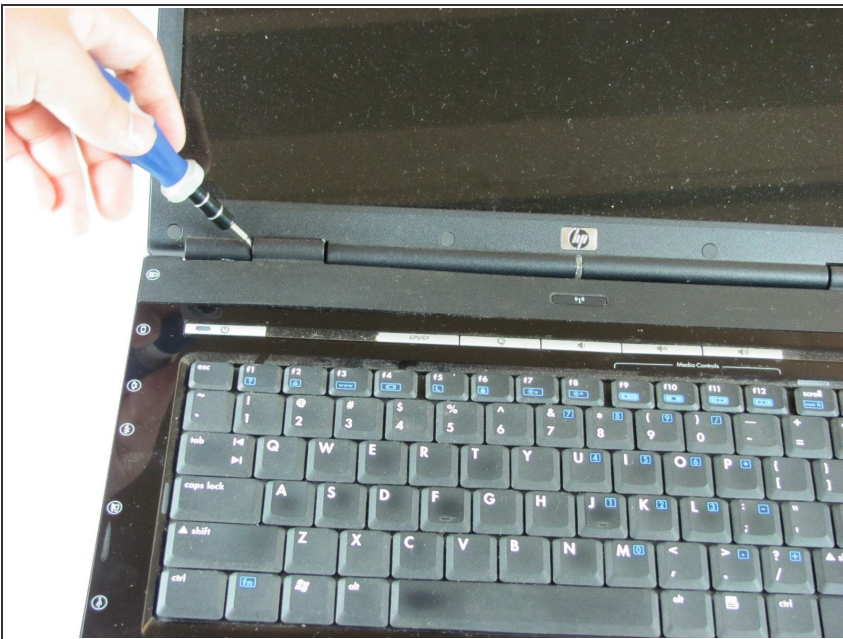


## Step 7 — Keyboard



- Remove the two 11.0mm screws at the corners on either side of the battery compartment.
- Remove the three 6.0mm screws.
- Remove the two 5.0mm screws.
- Remove the 6.0mm screw in the middle of the battery compartment.

## Step 8



- Turn the computer over and open the screen. This provides access to the screen hinges.
- The keyboard switch cover is attached to the computer with a series of snaps. With a flathead screwdriver, pry up the switch cover until it pops free.

## Step 9



- Be careful not to bend the keyboard switch cover too far when removing it.

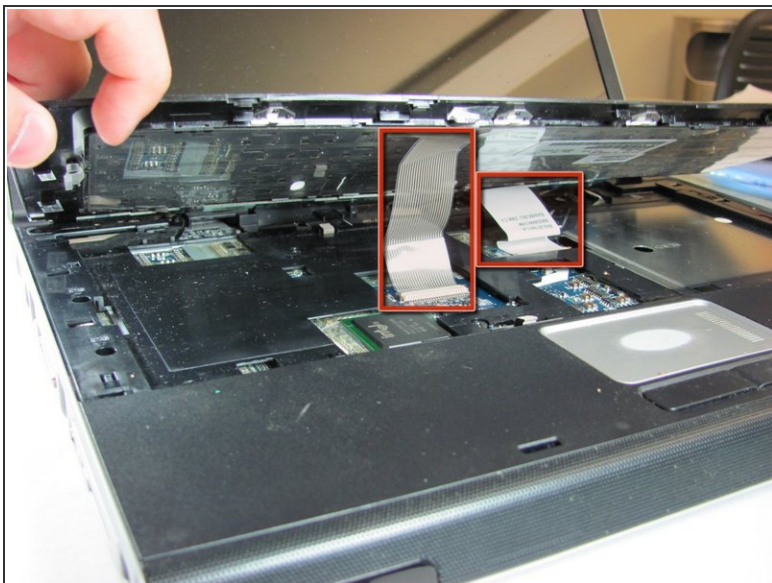
## Step 10



- Next, remove the keyboard. Push on the keyboard frame above the function keys and slide the keyboard toward the screen.

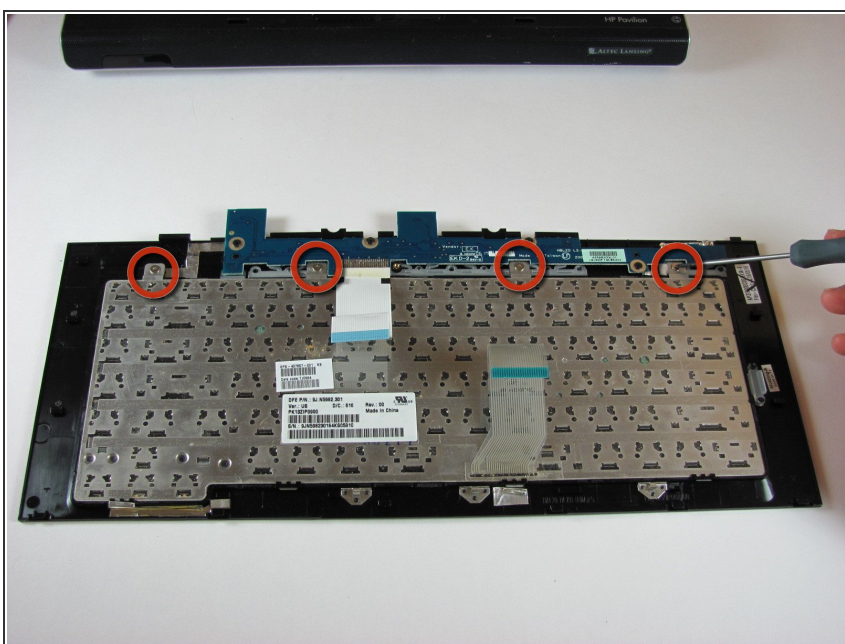


## Step 11



- Carefully lift the trackpad-side edge of the keyboard to reveal the LED and keyboard cable connectors.
- Detach the cable connectors from the computer by gripping each cable connector close to the computer contact point and pulling up gently.

## Step 12

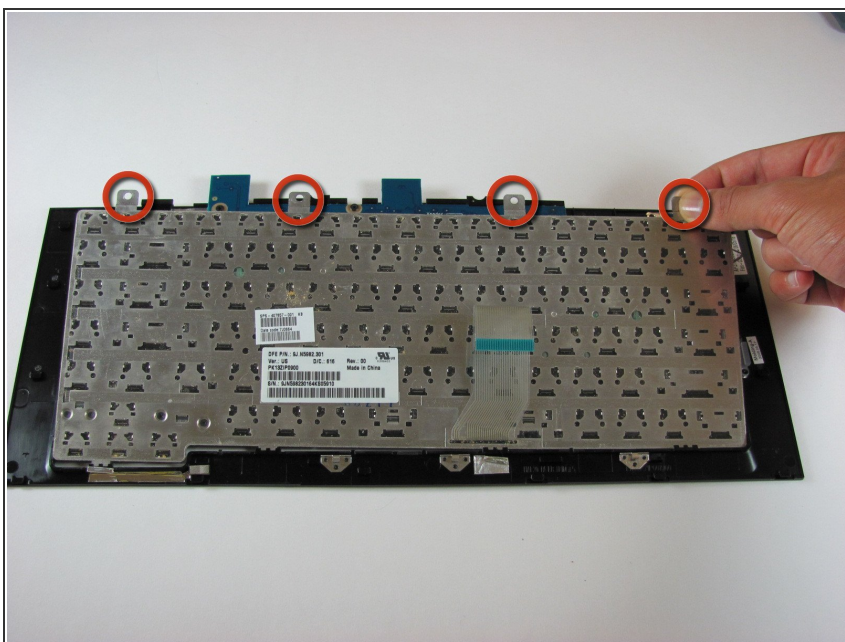


**i** This step is for replacing the keyboard only. If you are not replacing the keyboard, skip this step.

- Lay the keyboard face down.
- Remove the four 3.00mm screws that attach the keyboard to the keyboard frame.



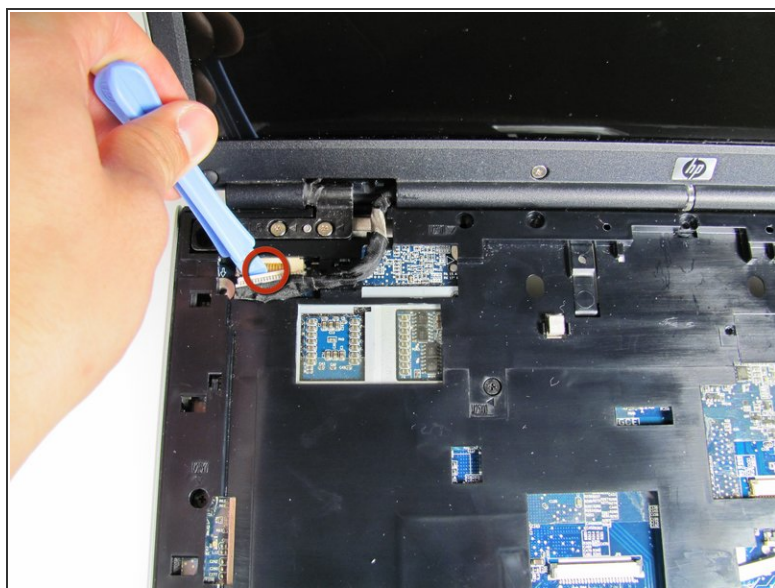
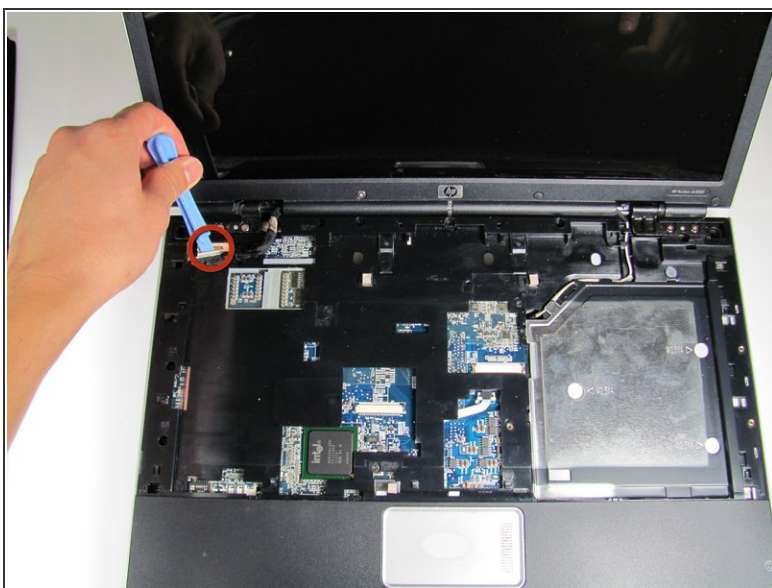
## Step 13



**i** This step is for replacing the keyboard only. If you are not replacing the keyboard, skip this step.

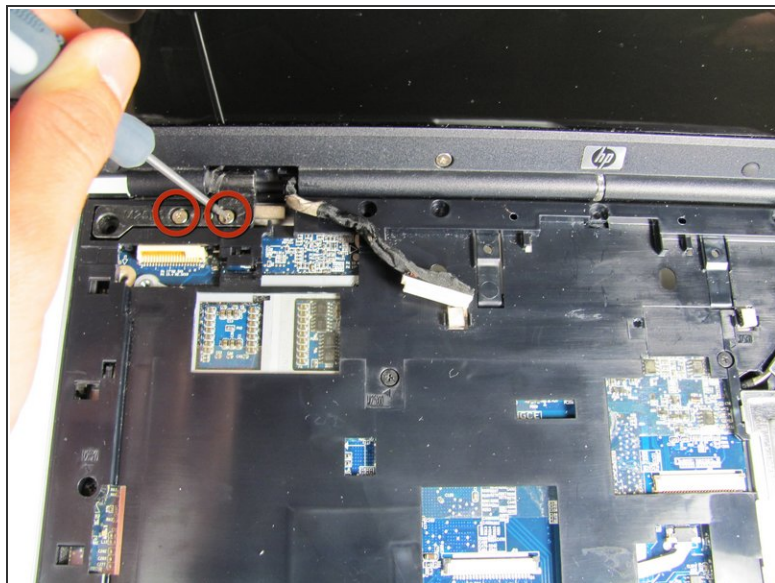
- Lift the keyboard off the keyboard frame.

## Step 14 — Screen



- Use the plastic prying tool to disconnect the screen cable from the system board.

## Step 15



- Remove the four 7.0mm screws securing the screen to the computer.

## Step 16



- Separate the screen from the computer frame by lifting the screen straight up.
- Disconnect the PCI wires by pulling them free of the computer.



To reassemble your device, follow these instructions in reverse order.