



HP Pavilion dv6-2158nr Speaker Assembly Replacement

Instructions to disassemble and remove the Speaker Assembly from the HP Pavilion dv6-2158nr

Written By: Chad



INTRODUCTION

Before delving into this repair guide, make sure to have a large area for placement of removed components and to keep screws organized.

Before removing the speaker assembly, follow these steps:

Shut down the computer

If unsure whether your computer is off or in hibernation, turn it on, and then shut down through the operating system.

Disconnect devices and power

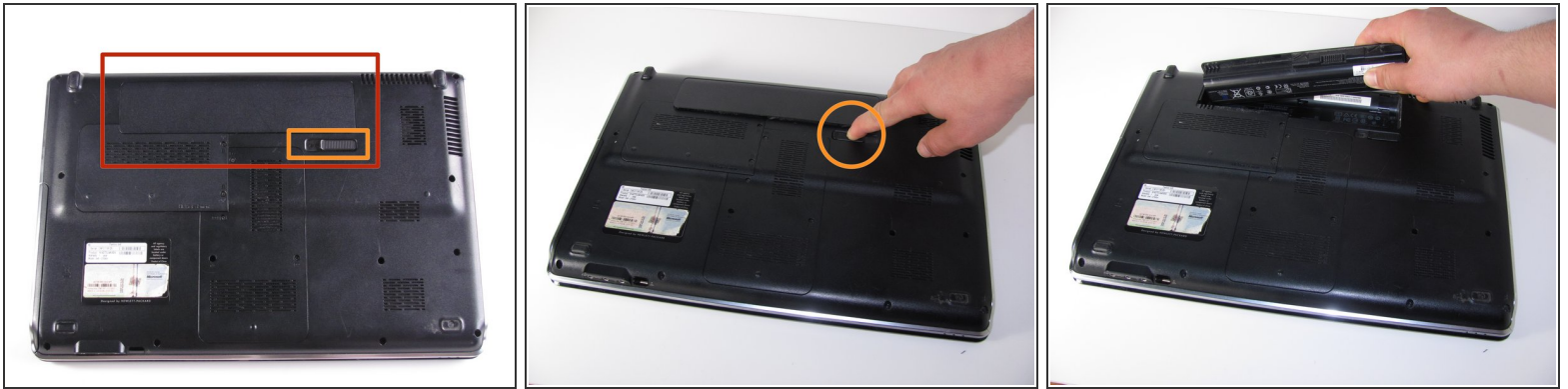
Disconnect all external devices, plug-ins and power from the computer.



TOOLS:

- [Phillips #1 Screwdriver](#) (1)
-

Step 1 — Battery



- Locate the battery on the bottom side of the laptop.
- Slide the release switch and the battery will pop out.
- Remove the battery

Step 2 — Keyboard



- Using a Philips #1 Loosen the three 7mm captive screws that secure the memory module compartment cover to the computer.
- Lift the rear edge of the cover, swing it up and to the front, and remove the cover.

Step 3



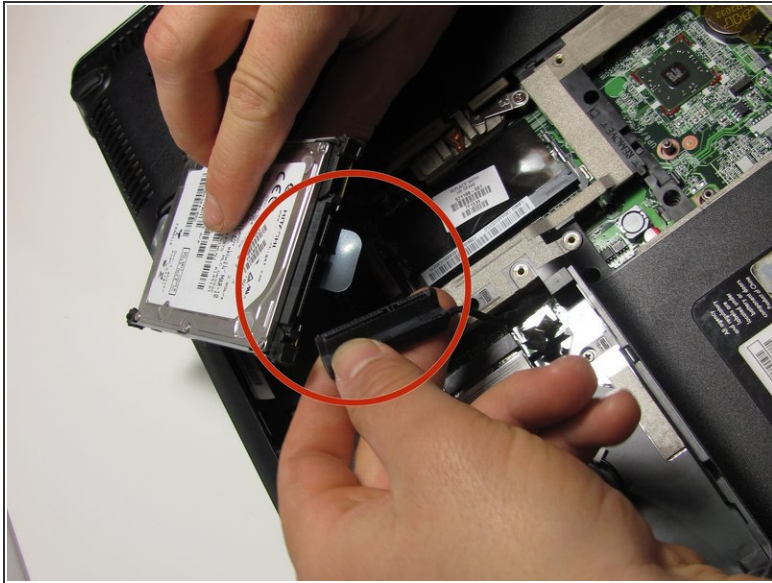
- Loosen the two 6mm captive screws that secure the hard drive port bezel cover to the computer, using a Philips #1.
- Lift the right side of the hard drive port bezel cover, swing it up and to the left, and remove the cover.

Step 4



- Use the Mylar tab to lift the hard drive up, and then slide it to the left to release it from the hard drive bay.

Step 5



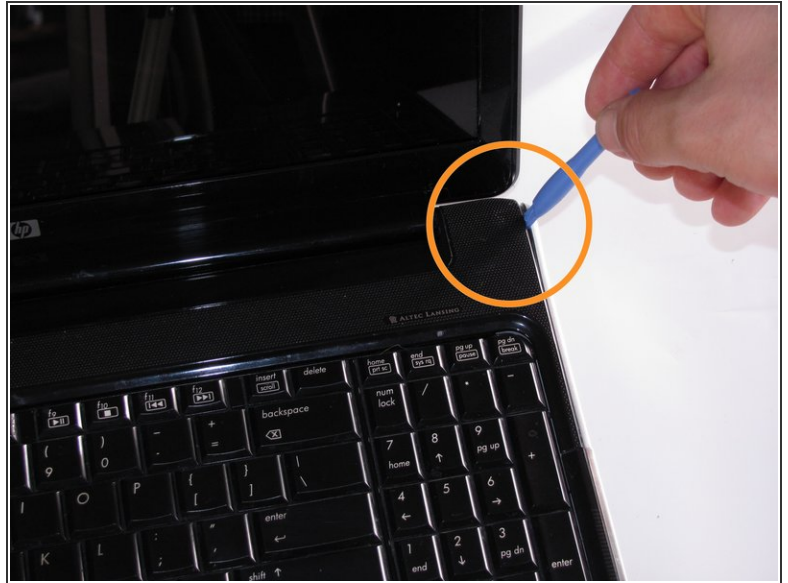
- Disconnect the hard drive cable from the system board.
- Remove the hard drive from the hard drive bay and set it aside.

Step 6



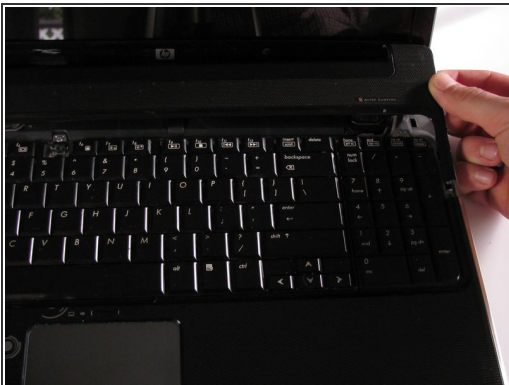
- With laptop upside down locate the three sets of screws that fasten the keyboard and switch cover.
 - Two Phillips 7mm screws that secure the switch cover to the computer.
 - Four Phillips 4.0mm screws that secure the switch cover to the computer. (these are inside the battery bay)
 - Four Philips 7mm screws that secure the keyboard to the computer.
- Remove all ten screws.

Step 7



- Turn the computer over, and locate the Switch Cover.
- Using the Safe Pry Tool, un-clip the Switch Cover until it detaches from the computer.
- ⓘ The clips will need careful prying to unhook.

Step 8



- Slide the Switch Cover onto the LCD Monitor, exposing the Speaker Assembly.
- ⚠ There are two ribbon cables still attached to the speaker assembly
- Detach the two ribbon cables from the speaker assembly.

Step 9



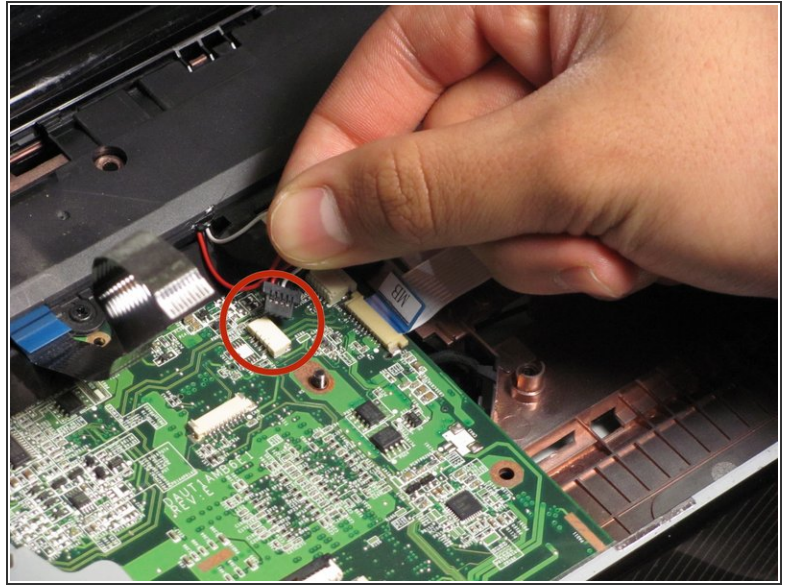
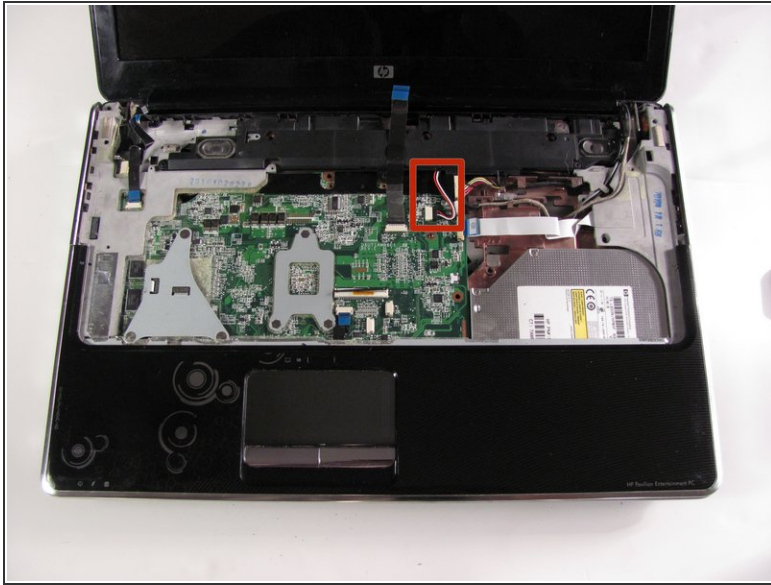
- Remove the three silver Phillips 3.5mm screws that secure the keyboard to the computer.
- Lift the rear edge of the keyboard and slide the keyboard back until the keyboard connector on the system board is accessible.

Step 10



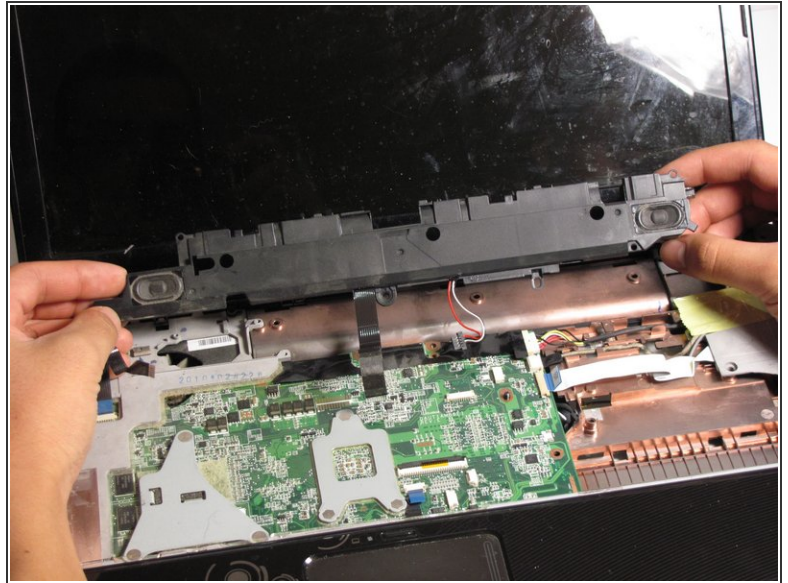
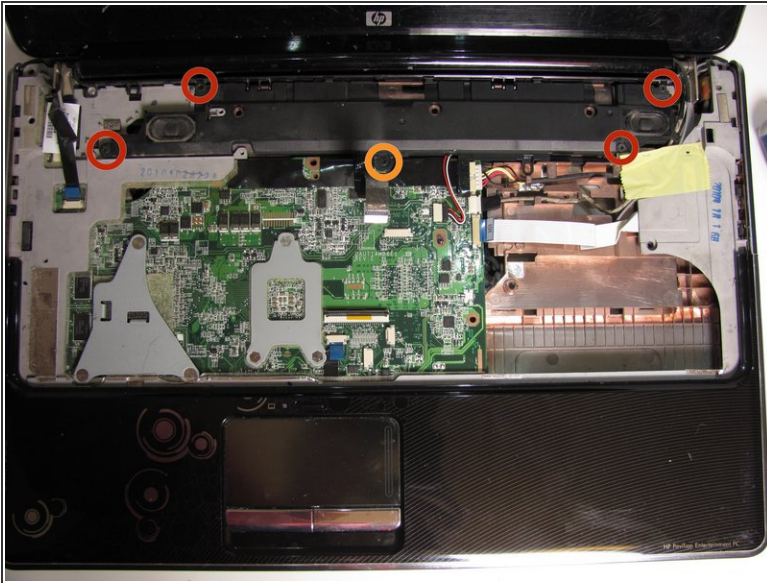
- Unhinge the zero insertion force (ZIF) connector to release the ribbon cable then pull gently on the cable to release.
- ⓘ You need to unhinge the blue plastic to release the ribbon cable from the main board.
- The keyboard can now be lifted off and set aside.

Step 11 — Speaker Assembly



- Position the computer with the keyboard facing up its front edge toward you.
- Disconnect the speaker cable from the system board.

Step 12



- Using the Phillips #1 screwdriver, remove the four Phillips 4mm screws that secure the speaker assembly.
- You will also need the Phillips #1 screwdriver to remove the Phillips 7mm screw that secures the center of the speaker assembly.
- Remove the speaker assembly from the computer.

To reassemble your device, follow these instructions in reverse order.