



HP Pavilion dv6000 Fan Replacement

Replace or clean the fan in your HP Pavilion dv6000.

Written By: Ben Hirsch



INTRODUCTION

Replace or clean the cooling fan in your HP Pavilion dv6000.



TOOLS:

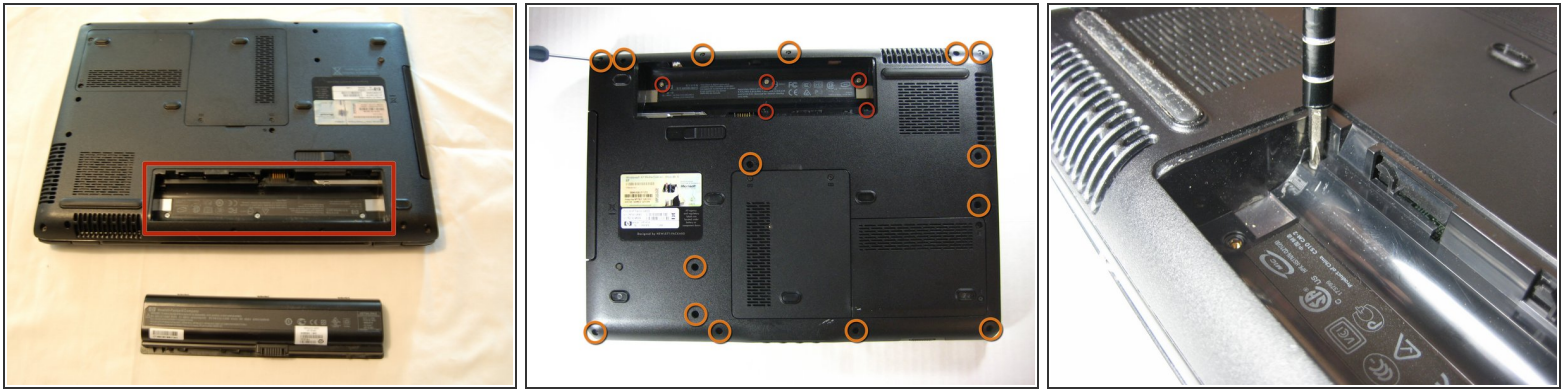
- [Phillips #00 Screwdriver](#) (1)
- [Tweezers](#) (1)



PARTS:

- [HP Pavilion DV6000 Fan](#) (1)

Step 1 — Main board



✦ First, put the laptop on a flat surface and make sure the battery side is up.

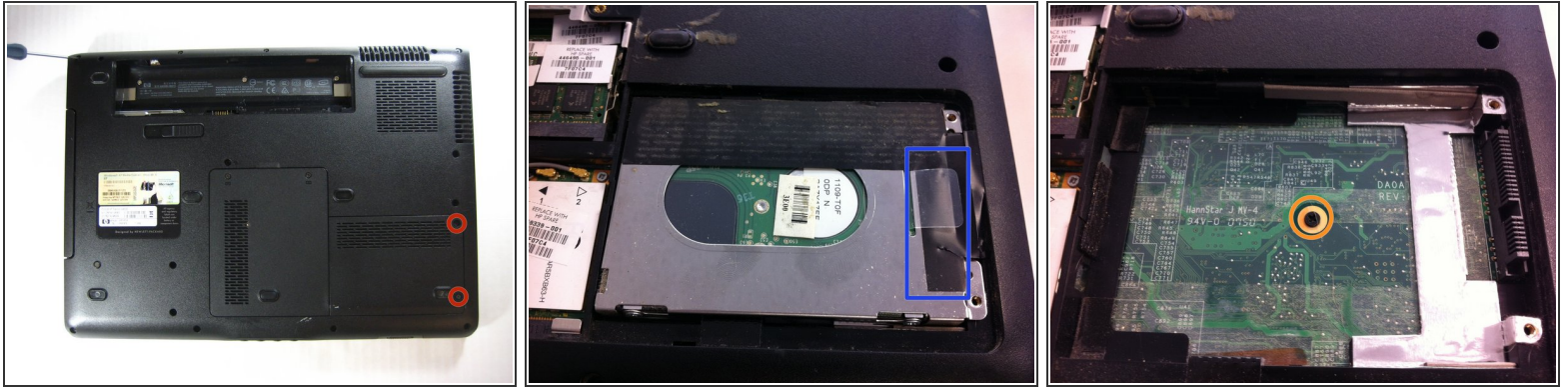
⚠ Remove the battery to prevent any electrical damage to any of the components.

● Remove the following screws:

- There are five(5) 5.8 mm Phillips screws located in the battery compartment, where the battery formerly resided.
- There are fifteen(15) 7.2 mm Phillips screws that secure the lower case to the upper case of the laptop.

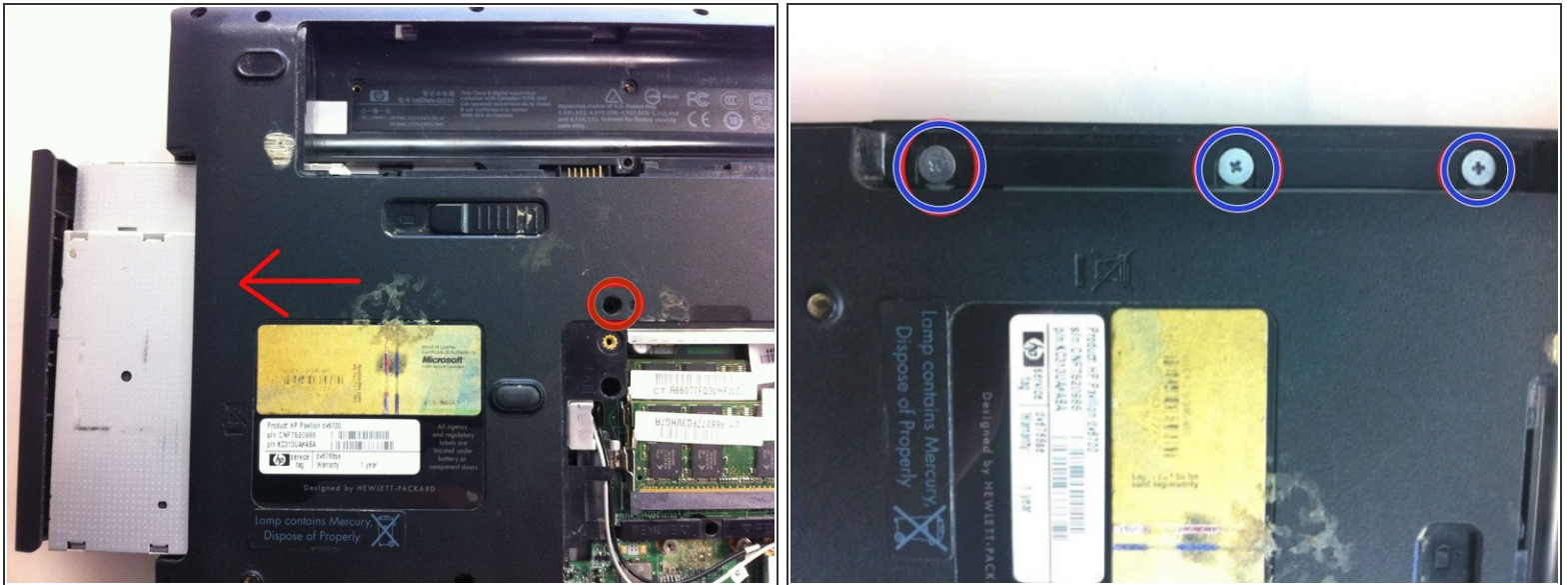
ⓘ These screw locations and sizes apply for the part number RG274UA#ABA.

Step 2



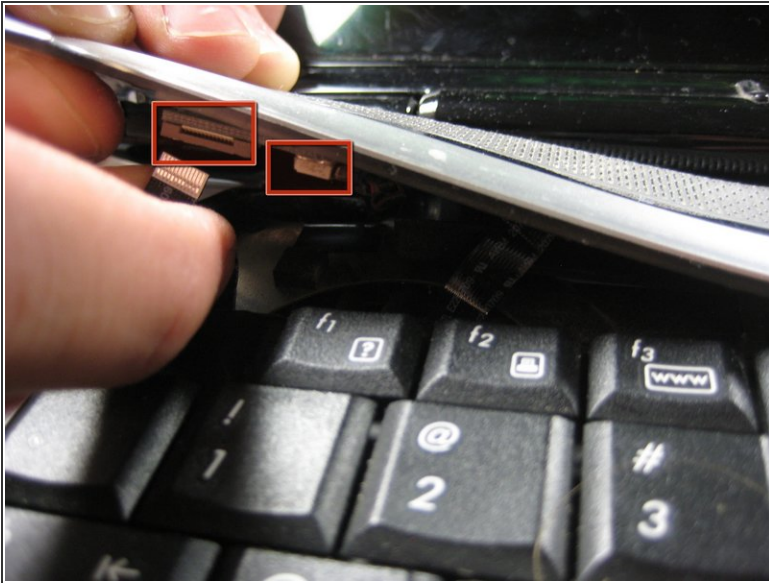
- Loosen the two captive screws on the right hand side of the hard drive cover. The screws will remain attached to the cover.
- Remove the hard drive by lifting it up vertically on the right hand side. There is usually a plastic pull tab to help. If this does not work, gently pry it out with a flat head screwdriver.
- Remove the one screw under the hard drive. This will help release the motherboard for later steps.

Step 3



- Remove the screw above the RAM access cover that holds the CD drive in place. Then, slide the drive to the left out of the case. Be careful not to pull the front off of the tray itself.
- Remove the three(3) screws along the edge that are revealed after removing the CD drive. These screws hold the top bezel to the bottom frame.

Step 4



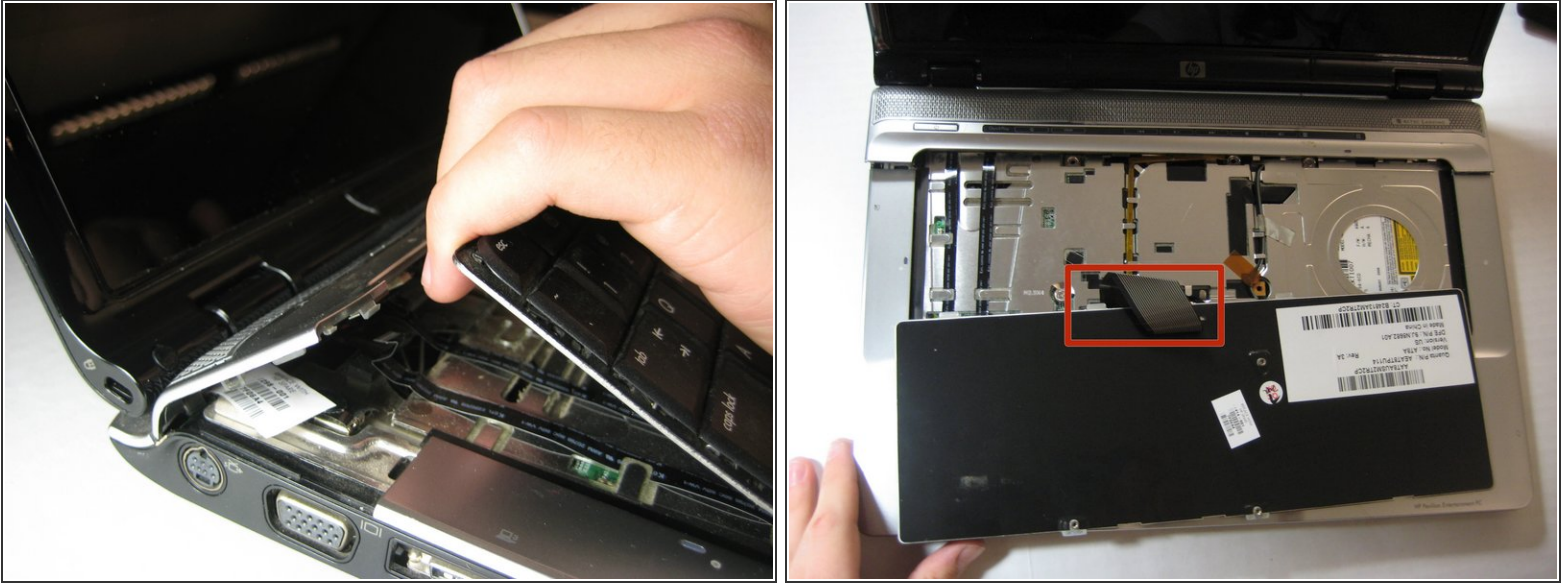
- After taking out the three(3) screws, flip the laptop over so that the keyboard side is up.
- ⚠ Carefully lift speaker grille / button panel away from the upper case by pulling up on the two corners closest to the keyboard. If caution is not taken, permanent damage may occur.
- Remove the center cable from its connector on the button panel. Then, gently release the friction locks that secure the left and right ribbon cables by pushing them away from their connectors. The ribbon cables will slip out of their connectors.

Step 5



- After completing step 4, flip the laptop over again, making sure the battery side is up. Remove the two screws securing the RAM shield to the lower case.
- Lift and remove the RAM shield up from the lower case; The screws will remain captive within the shield.
- Remove the black Philips screw marked with a Keyboard icon.

Step 6



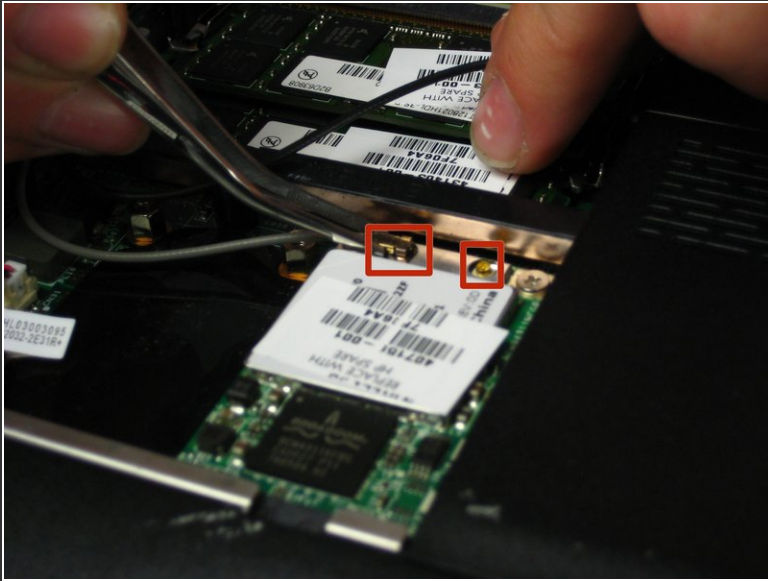
- After finishing step 5, turn the computer over and gently lift the keyboard at the top corners, sliding it upward and towards the screen. The bottom tabs will slide out from below the palm rest and the keyboard may be turned over to reveal the connection cable.
- Disconnect the keyboard ribbon cable (highlighted in red) from its socket on the motherboard.

Step 7



- Remove the four 5.8 mm Phillips screws securing the top cover to the lower case.

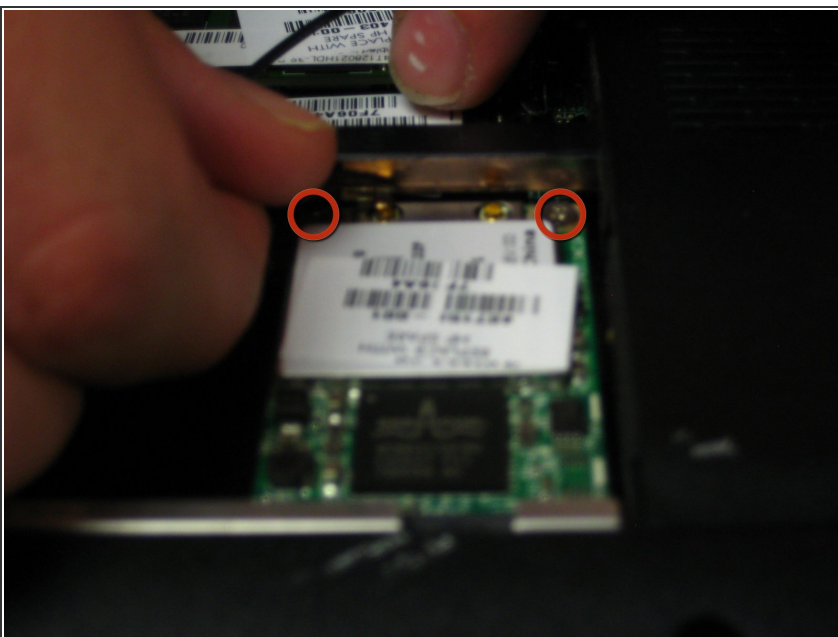
Step 8



- Use a pair of tweezers to disconnect both antennas from their sockets on the wireless card. These are snap-on connectors, so simply pull them straight up to snap them off the studs on the card.

⚠ Be careful to pull on the contacts and not the wires. The crimps used to hold them to the wires are delicate.

Step 9



- Remove the two(2) 3.7 mm Phillips screws securing the wireless card to the motherboard.
- ⓘ Upon removing the Phillips screws that secure the wireless card to the motherboard, the wireless card should pop up from its top side.
- Grasp the wireless card and pull it straight out of its socket on the motherboard.

Step 10



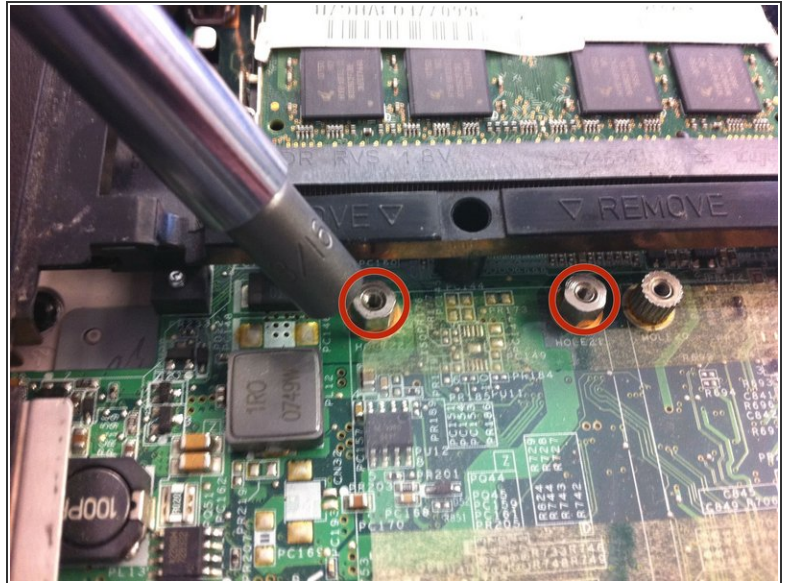
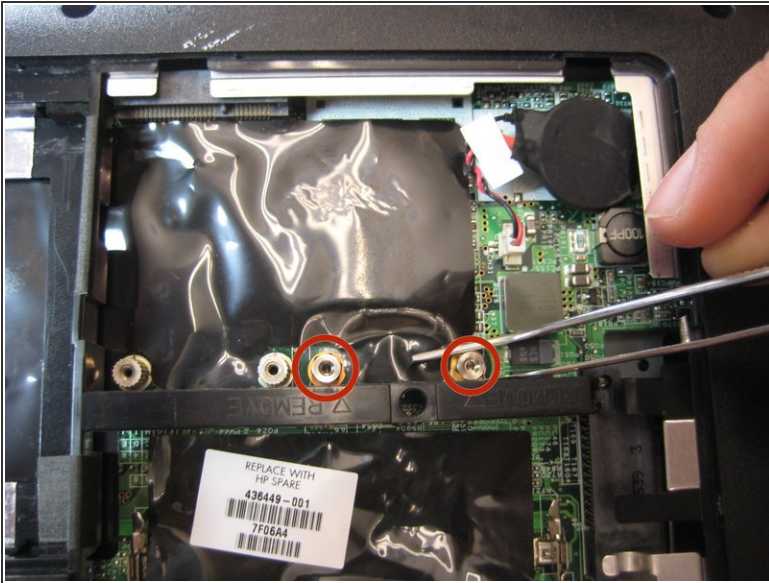
- The LCD needs to be removed to proceed. Start by disconnecting the marked cable from its socket and disconnecting the cables from their clips in the palm rest.
- Proceed to pull the two WiFi antenna cables through the motherboard.
- Remove the screws that hold each LCD hinge cover in place. There is 1 screw for each cover.
- Gently pry each cover off its hinge.

Step 11



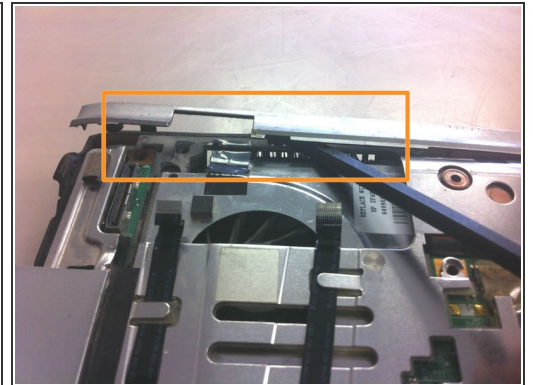
- Remove the Video cable by grabbing the ribbon and lifting up.
- ⚠ Next, remove the 2 screws securing the LCD hinge mounts to the bottom frame(in blue). Hold the LCD with one hand and unscrew with the other. Do not leave the screen unsupported or it may bend or fall off abruptly and be damaged .
- Lift up the LCD and its three cable bundles and set it aside.

Step 12



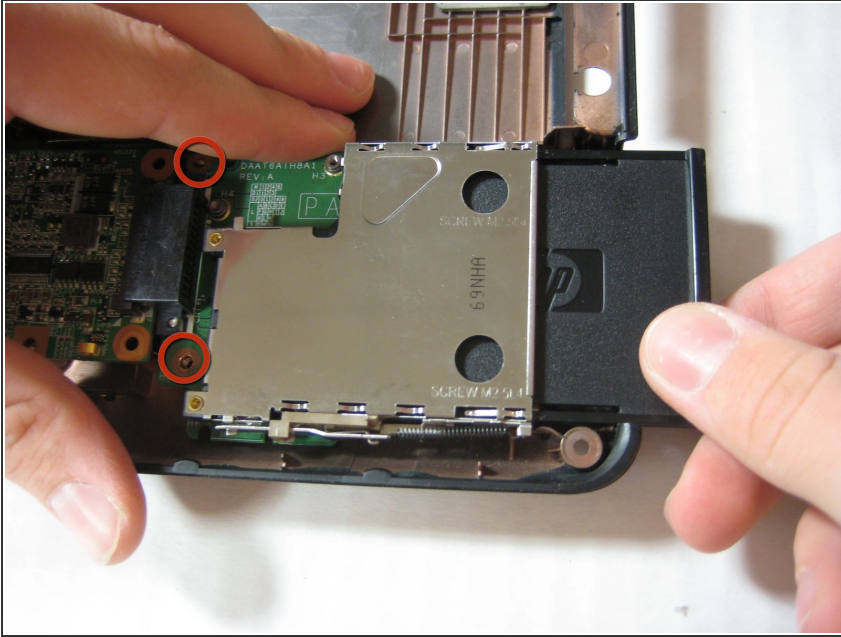
- Use a pair of tweezers (or 3/16 nut driver) to remove the two 5mm hex screws secured to the logic board.

Step 13



- ⓘ You will need to remove the bezel under the LCD hinge to finally pull the top palm rest free.
- Remove the screw on the far top right hand side. Then carefully pry the bezel free.
- Pull the final cable connections from their sockets on the motherboard. Undo the top-left screw, then gently lift the palm rest towards you starting back to front(in orange).

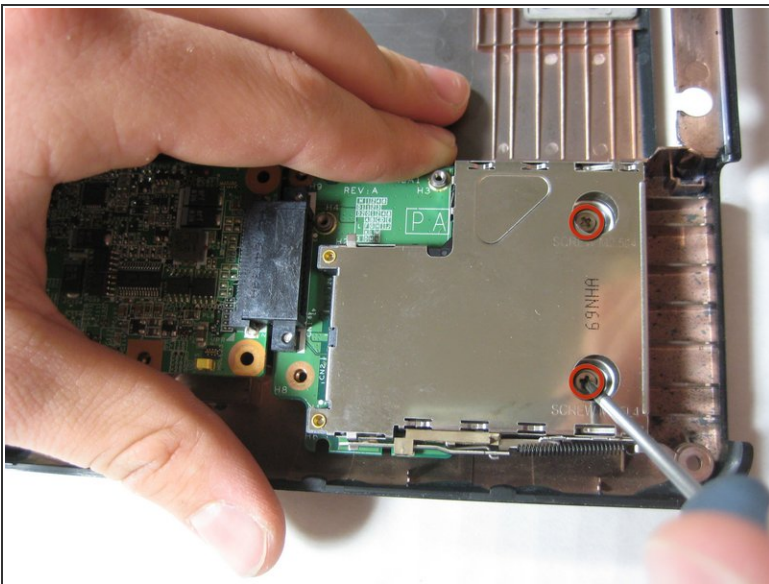
Step 14



- Remove the two(2) 3.8 mm Phillips screws securing the left edge of the expansion port board to the motherboard.

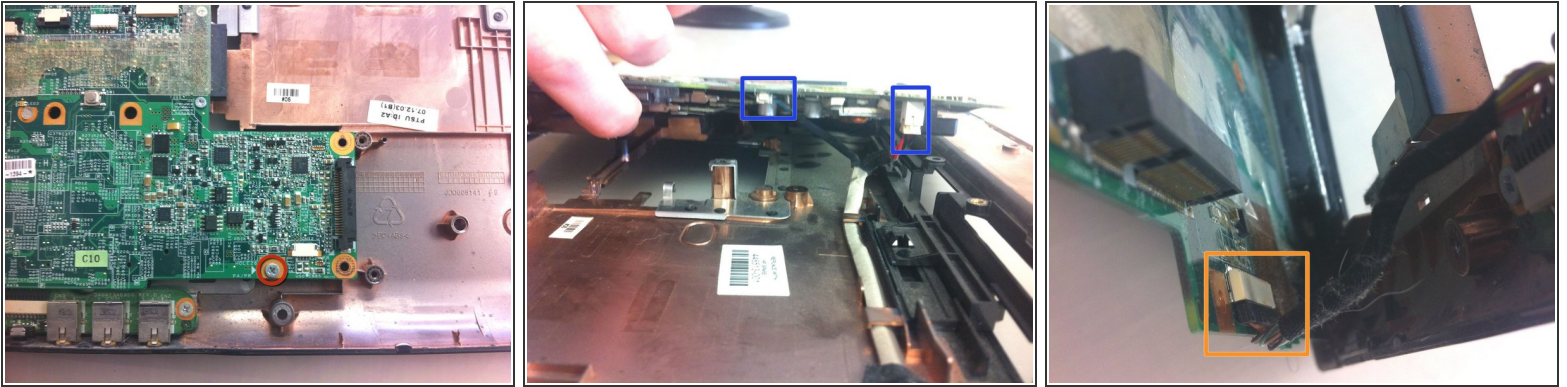
ⓘ If present, remove the plastic "dummy card" from the expansion port.

Step 15



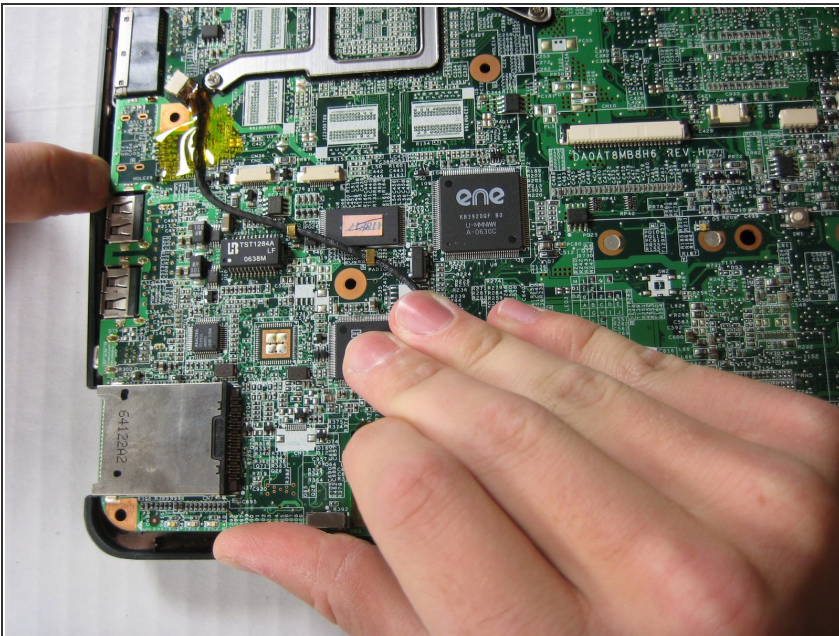
- Remove the two 3.8 mm Phillips screws securing the right edge of the expansion port board to the motherboard.
- Lift and remove the expansion port board out of the lower case.

Step 16



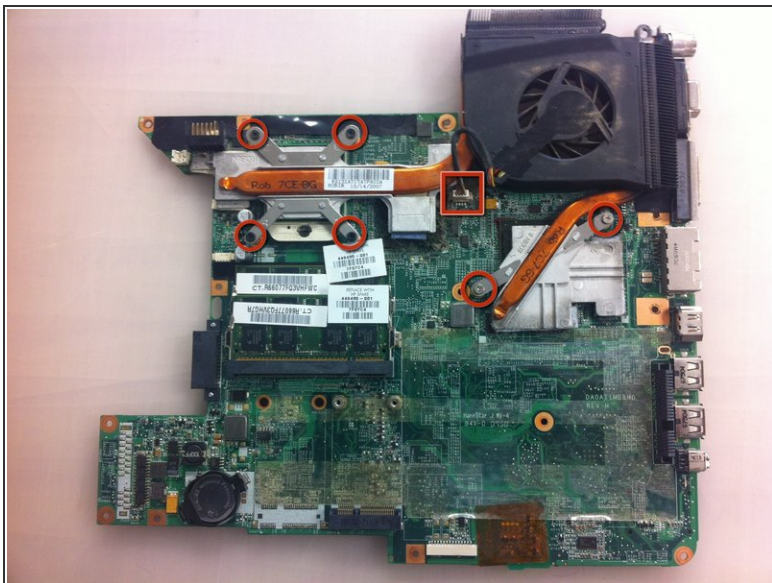
- Remove the final screw holding the motherboard in place. Then gently lift the motherboard up vertically.
- Remove the two marked cables. These will be tight. Do not pull by the wires. Carefully wiggle the connectors only.
- Remove the final data cable near the front of the system board. The motherboard will be free. Lift up and towards the left to remove from the base.





Step 17



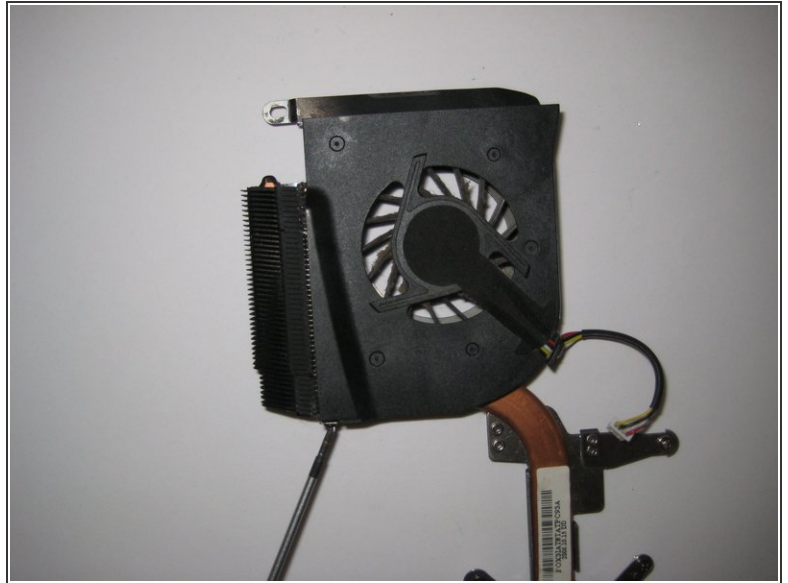
- ⓘ Carefully bend the left edge of the lower case outward to make sure the input ports (USB, Serial, etc.) on the motherboard are free.
- Lift and remove the motherboard from the lower case.

Step 18



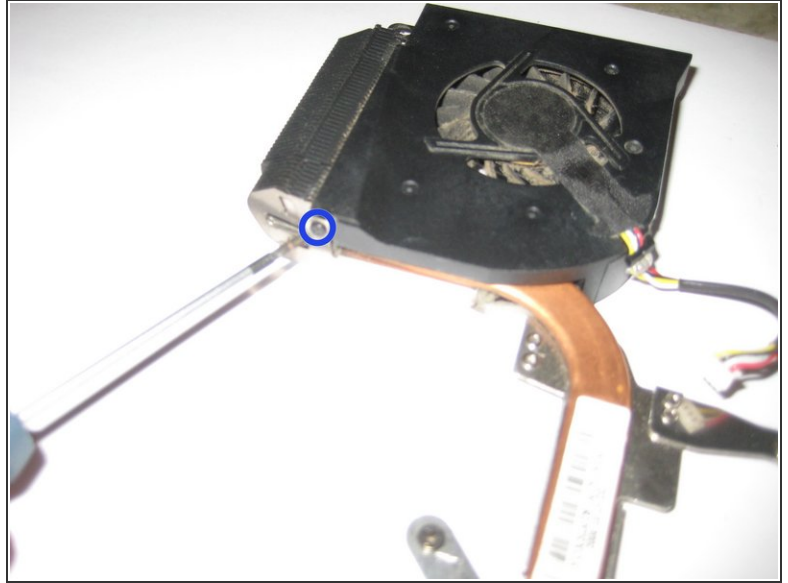
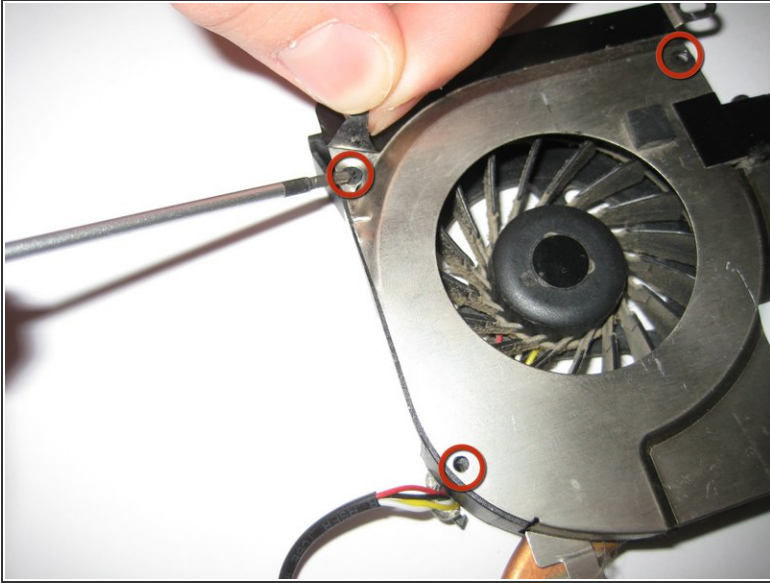
-  Carefully set the motherboard on a non-conductive and level surface.
-  The motherboard is static sensitive and permanent damage can occur if static electricity is transferred to it.
-  To remove the heat sink, remove the marked screws and remove the fan's power cable. Clean the CPU/heat sink and add new thermal paste.
-  Reverse these steps for reassembly.

Step 19 — Fan



- Remove the five 5.6 mm Phillips screws securing the fan/heat sink assembly to the motherboard.
- Lift and remove the fan straight up from the motherboard.

Step 20



- Remove the following screws securing the fan to the fan assembly:
 - Three 3.6 mm Phillips screws located on the top side.
 - One 3.6 mm Phillips screw located on the side of the fan assembly (highlighted in the second picture)

Step 21



- Lift and remove the fan up out from the fan assembly.
- ★ Clean the heatsink too so when you reflow, it lasts more then 2 months if you do

To reassemble your device, follow these instructions in reverse order.