



# HP Pavilion dv6000 Optical Drive Assembly Replacement

Replace the optical drive assembly in your HP Pavilion dv6000.

Written By: Ben Hirsch



---

## INTRODUCTION

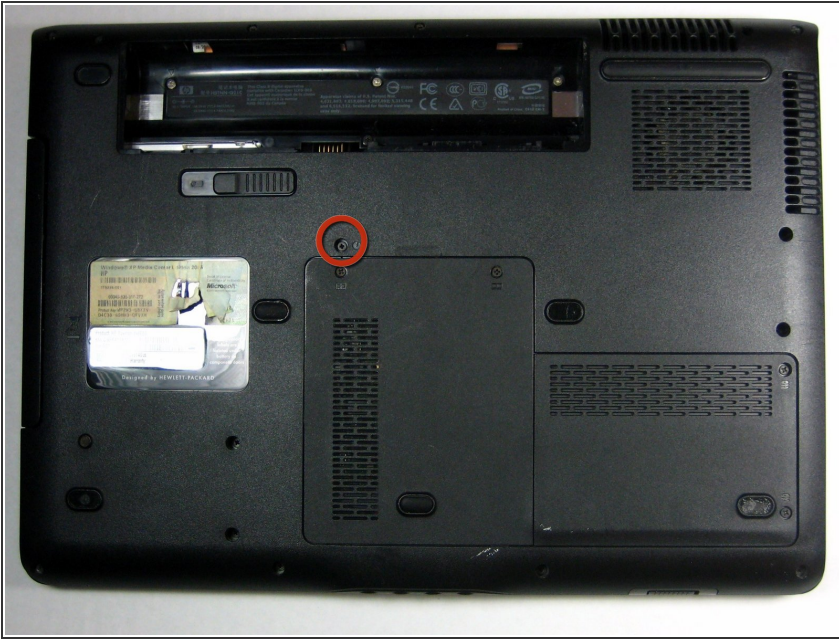
Replace the optical drive assembly in your HP Pavilion dv6000.



### TOOLS:

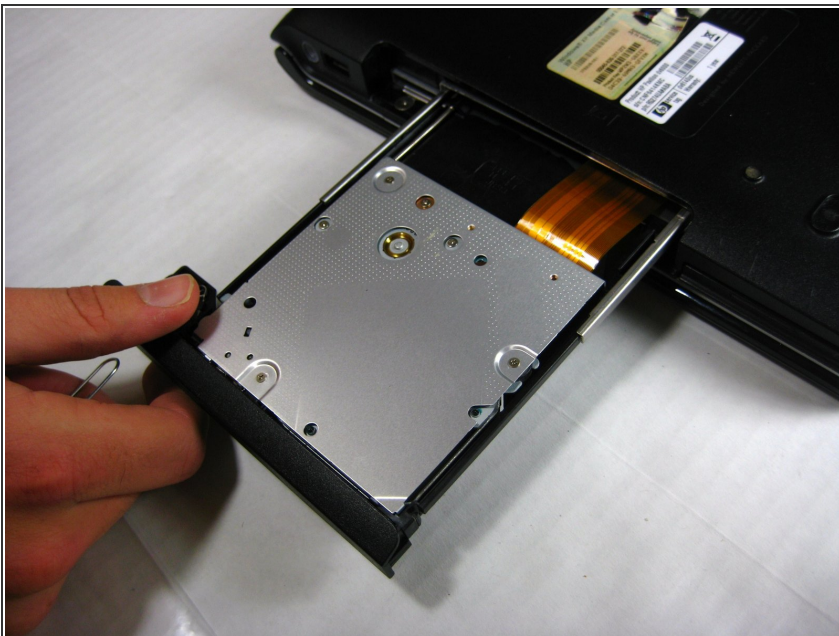
- [Paper Clip](#) (1)
  - [Phillips #00 Screwdriver](#) (1)
-

## Step 1 — Optical Drive



- ✦ Before proceeding, it is recommended to remove the battery to prevent any electrical damage to components.
- Remove the single 5.6 mm Phillips screw securing the optical drive to the lower case.

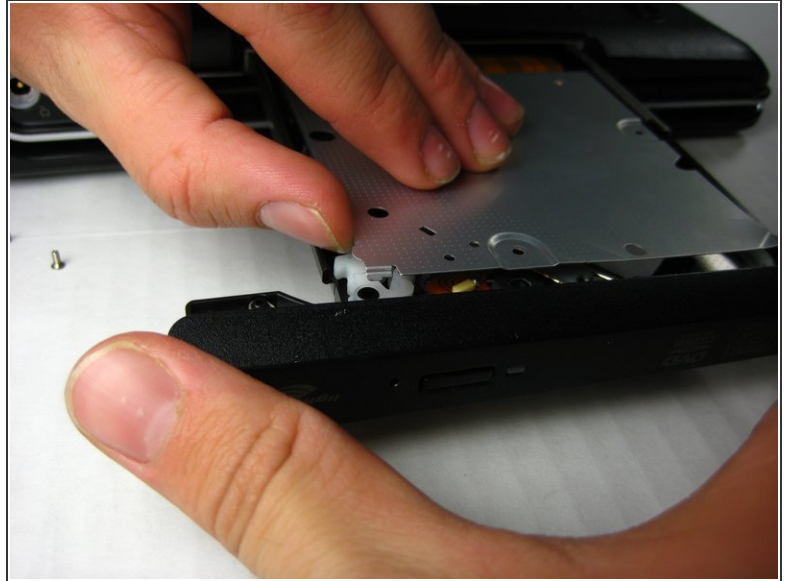
## Step 2



- Insert the tip of an unrolled paper clip into the small hole located on the side of the optical drive.
- i The tray will partially pop out of the laptop.
- Firmly pull the drive straight away from the laptop.
- ⚠ While pulling the drive out, be careful not to bend the sliding rails on both sides of the optical drive.
- At this point you can remove the entire optical drive, or you can continue to disassemble the optical drive assembly.



## Step 3 — Optical Drive Assembly



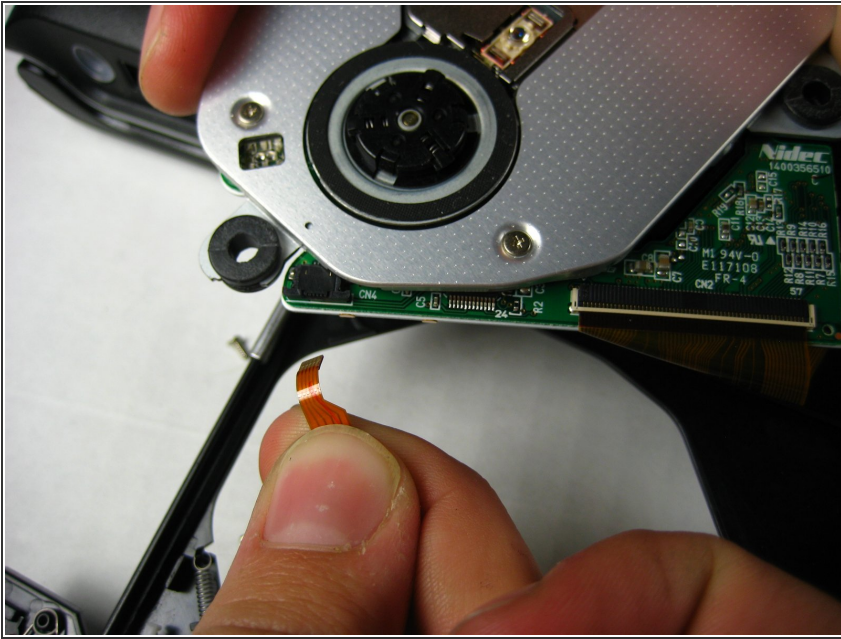
- Remove the three 3.2 mm screws securing the top plate of the optical drive.
- Lift and remove the top plate up off the optical drive.

## Step 4



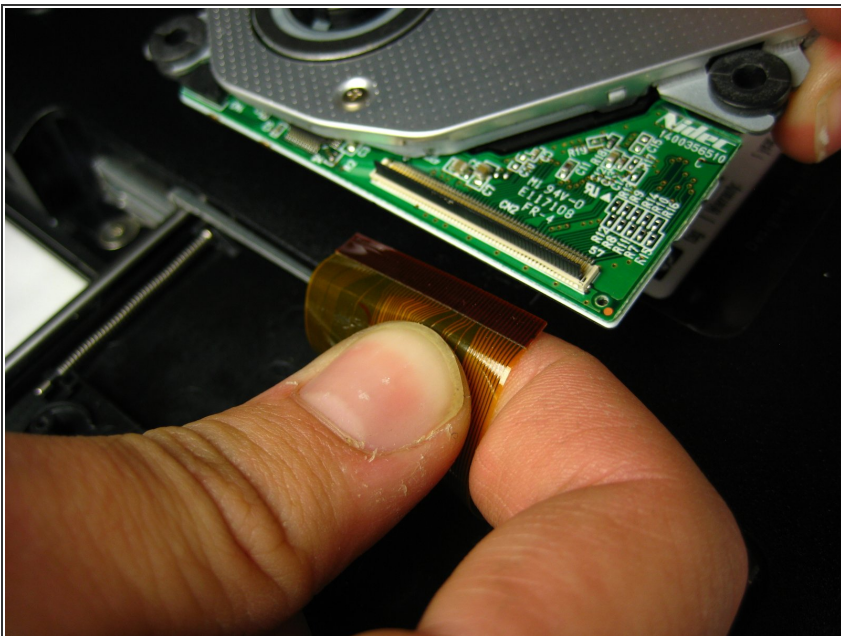
- Lift and remove the optical drive assembly.
- ⓘ It may be helpful to gently "rock" the drive assembly side to side to dislodge it from its recess.
- ⚠ For the rest of the guide, be careful to not touch any of the circuitry on the board as well as the laser lens!

## Step 5



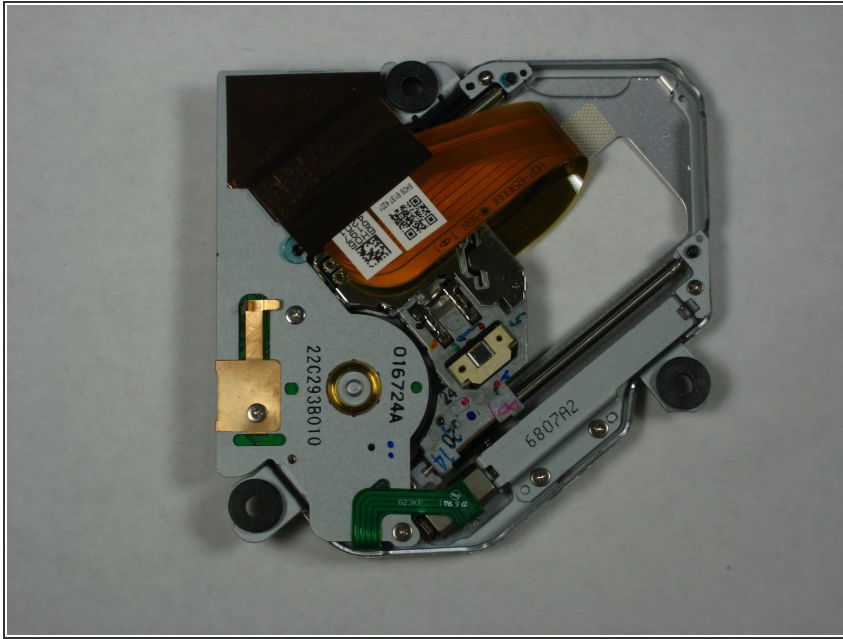
- ⓘ Flip the drive over.
- Pull the small ribbon cable straight away from its socket on the optical drive assembly board.

## Step 6



- Use your fingernail to flip up the cable retaining flap on the ZIF socket for the larger ribbon cable.
- Pull the larger ribbon cable straight out of its socket on the optical drive assembly board.

## Step 7



- Lift and remove the optical drive assembly from the optical drive framework.
- Optical drive assembly remains.

To reassemble your device, follow these instructions in reverse order.